

# **Questioning Boundaries**

## **Linking Adolescent Reproductive Health and Livelihoods Programs**

**Simel Esim**

**Economist**



# Outline

- Project Description
- Conceptual Framework
  - Defining Adolescent Livelihoods
  - Continuum of Linkage
- Results for Africa
- Insights on Adolescent Livelihoods Programs and Linked Programs



# ICRW is...

- Conducting an analysis of programs linking adolescent reproductive health and livelihoods
- Developing recommendations for more effective policies and program strategies
- **Phase I:** An inventory of "linked" programs in developing countries
- **Phase 2:** A field-based assessment of selected programs in three countries:

**India, Kenya, and Colombia**

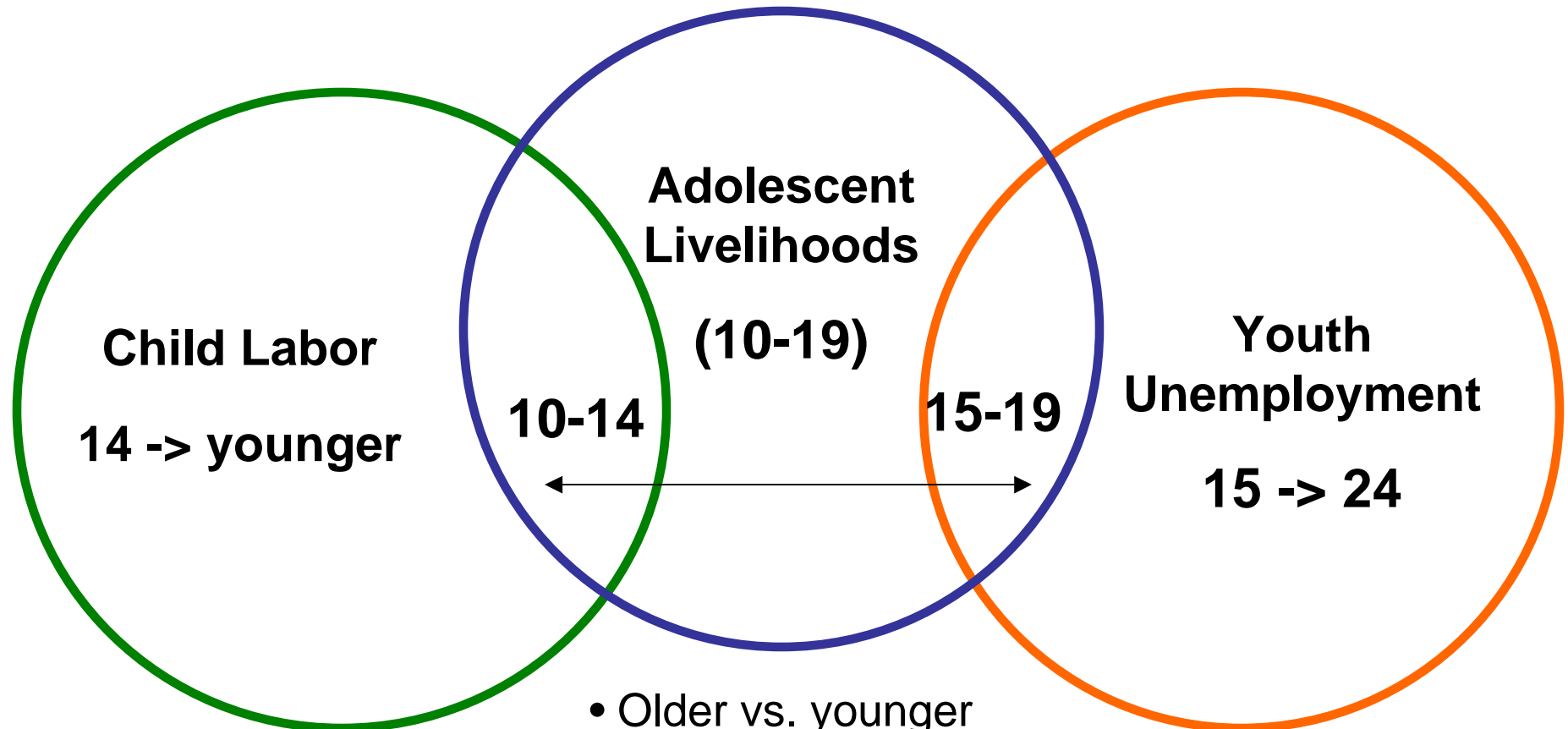


# The Assessment

- **WHY** reproductive health and livelihoods for adolescents should be linked is more obvious than **HOW**
- Many programmatic efforts are new, and are designed using intuition & experimentation
- Few systematic research efforts look at cause and effect or how precisely linkages work
- Few efforts provide documentation or evaluation of impact



# Children-Adolescents-Youth



- Older vs. younger
- Urban vs. rural
- Girls vs. boys

# Definition of Adolescent Livelihoods

**A comprehensive, multi-sector approach that goes beyond employment alone to help young people gain access to**

**A MEANS OF LIVING**

- **developing capabilities**
- **building assets and resources**
- **structuring opportunities**



# Developing Capabilities

- Developing Skills
  - training services (skills training, business training, management training, etc.)
  - entrepreneurship development
- Empowering Women
  - group organizing
  - leadership development, legal awareness training



# Building Resources

- Providing Financial Services
  - Credit
  - Savings
  - Other financial services (insurance)
- Improving access to non-financial resources
  - land reform and property rights
  - common property resource programs
  - technology development





# Structuring Opportunities

- Job provision (income generating projects, cooperatives, group enterprises, employment promotion programs, SME development generating jobs for youth)
- Access to markets (market linkage programs)
- Protecting and promoting workers rights, rights to fair pay and representation
- Developing institutions supporting youth
- Structural change through legal, policy reform



# Inventory of Adolescent Programs

- An inventory of adolescent programs that had ANY possibility of being “**linked.**”
- Widest possible definition of “**linked.**”
- Data gathered on:
  - name of program and implementing organization, source of information, country, implementation period, program objectives, activities and target population
- An excel sheet that can be sorted by any of the fields, available online at the ICRW website by the end of the year.



# Initial Definition of Linkage

- programs with any combination of ***economic*** components (i.e. skills training, microfinance) **and *adolescent reproductive health*** components
- reproductive health programs ***targeted at*** specific occupations (sex workers) and work locations (factories)
- livelihoods programs ***targeted at*** specific high-risk groups (teen-age mothers, street based youth)



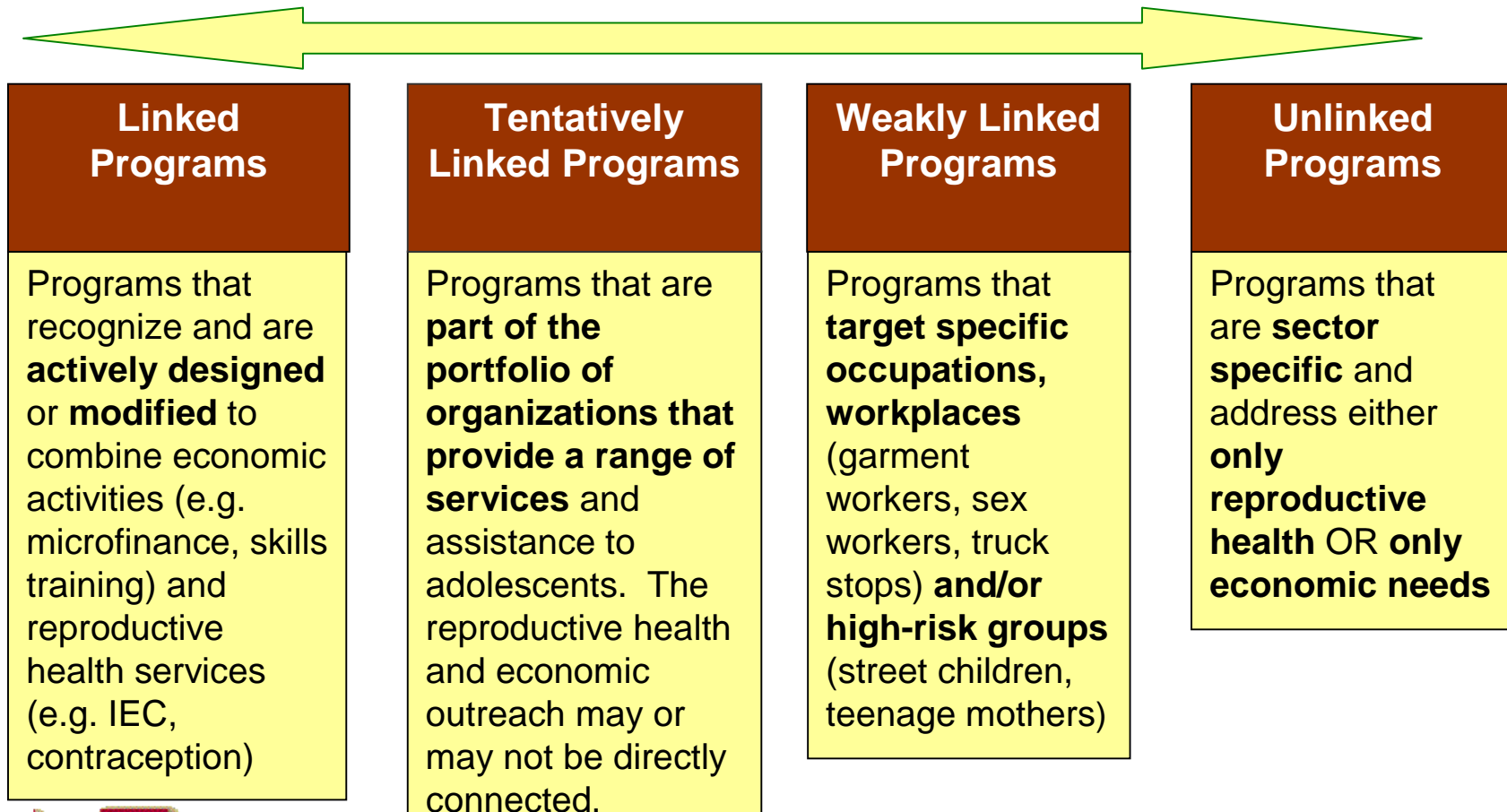
# Methodological Assessments

- **Adolescent reproductive health** community appears to be *more ready* and *willing* to consider linking programs with livelihoods
- **Very few responses from the field of economic development** perhaps due to:
  - limitations of the field in recognizing social development
  - higher levels of skepticism in the economic development community regarding the effectiveness of linked programs
- To reach out to the economic development field, the project team is developing a 1-page policy brief on adolescent livelihoods



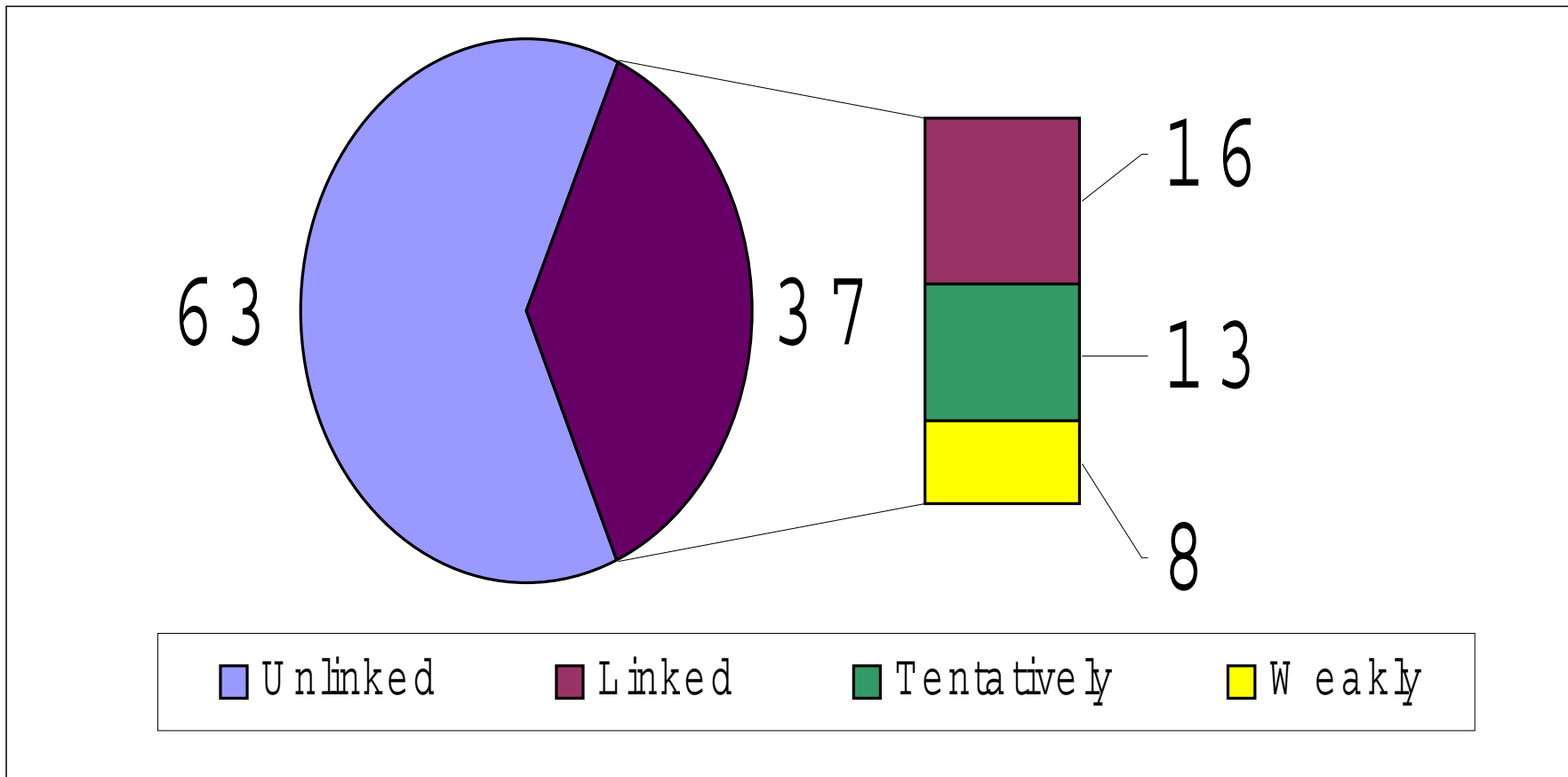
# Conceptual Framework of Linkage

## Continuum of Linkage in Adolescent Reproductive Health and Livelihood Programs

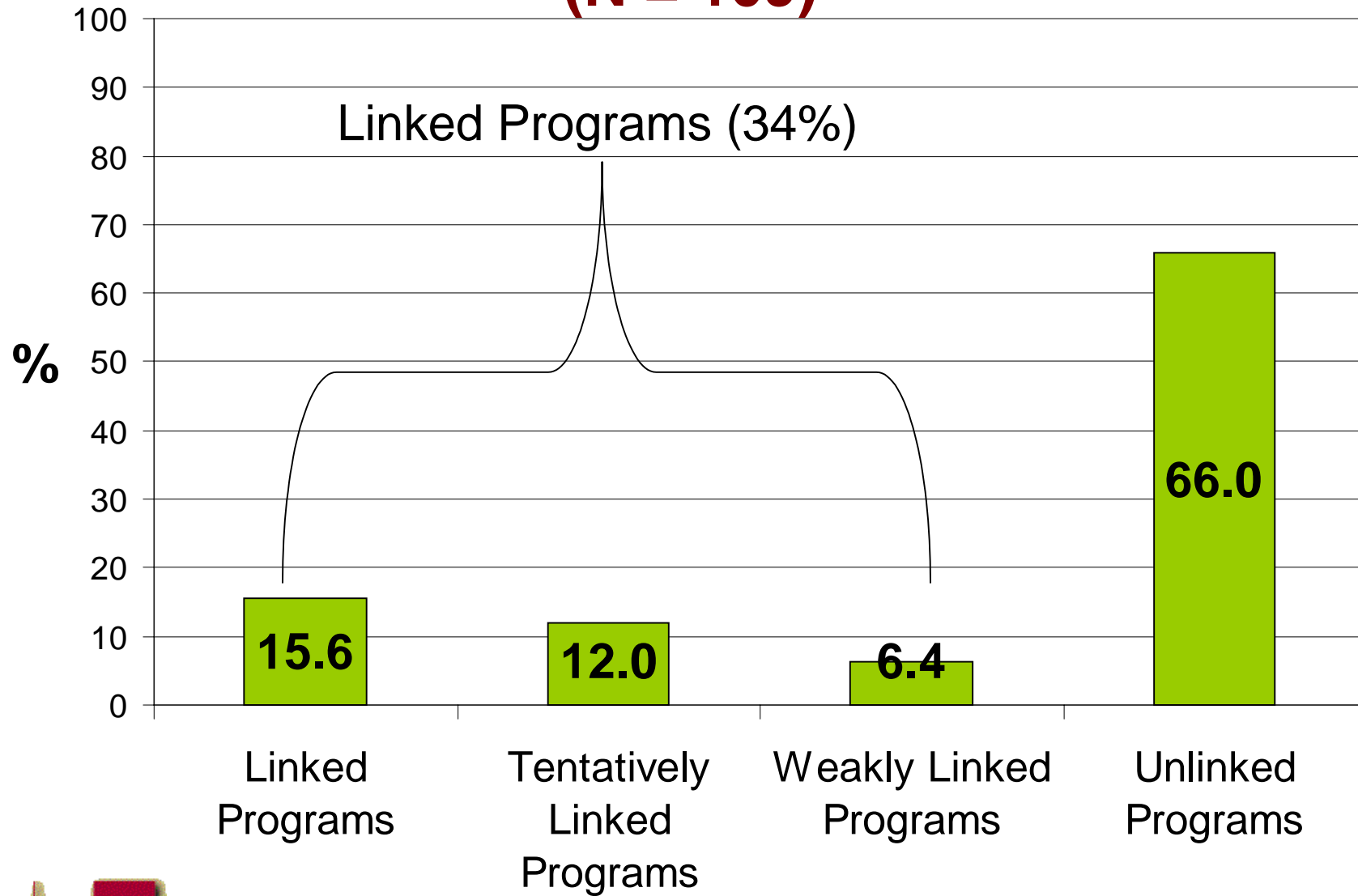


# Distribution of Adolescent Programs (Percentage)

N=239



# Adolescent Programs in Africa (N = 109)



# Prominent Activities in Africa

## Reproductive Health



### HIV/AIDS education and awareness raising

- peer education and counseling
- awareness raising for parents and communities
- street theater, puppet theater, dance

## Livelihoods

- Vocational Training
  - traditional and non-traditional sectors (bricklaying and masonry) to broaden income earning opportunities for women
- Business Development
  - simple accounting, bookkeeping, and other small-scale business skills





# HIV/AIDS Links with Livelihoods

- Youth-to-Youth HIV prevention, vocational & self-esteem training to reduce young women's economic and emotional dependence on men
- Target specifically high-risk population (HIV/AIDS orphans, young sex workers) income generation activities combined with HIV/AIDS awareness.
- HIV/AIDS prevention and control through peer support, while business/skills training program is added to address youth unemployment.
- Youth Development & HIV/AIDS prevention: Integrate out-of-school and income earning activities; educate parents on adolescents' reproductive health needs.



# Insights on Livelihood Programs

- Relevant microfinance products
  - consumer loans for income smoothing, family welfare
  - social security and social insurance schemes: health, life, housing
- direct microfinance programs for youth are being tested in a number of places, and worth watching for (Kenya K-REP example of microfinance programs for youth)

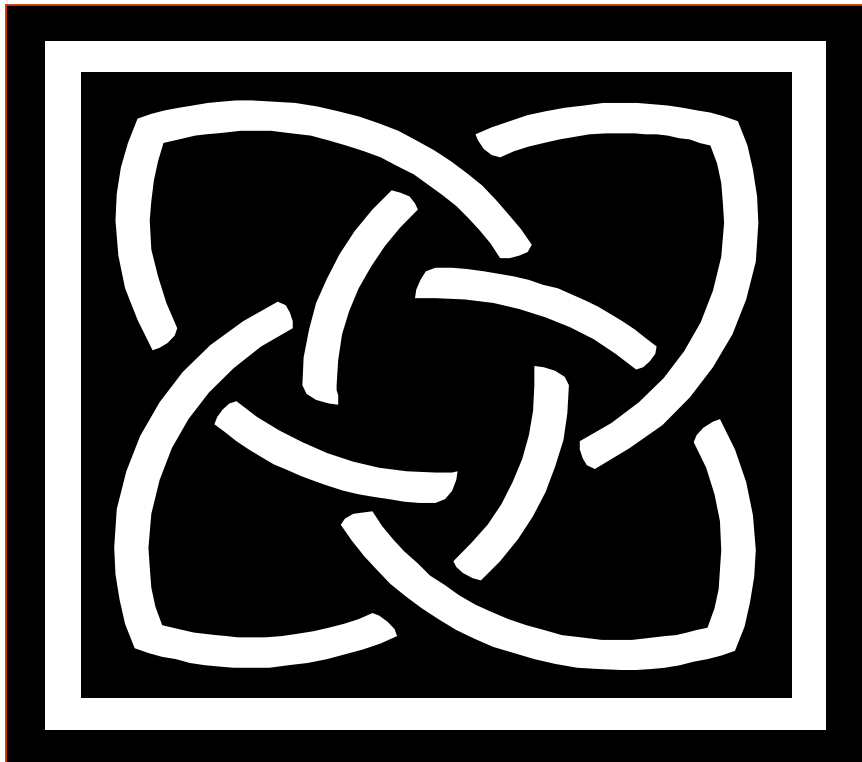


# Insights into Linked Programs

- Likely to find more of referral and partnership type linkages which are ad-hoc, informal, on-need basis
- Important to share how and if these mechanisms work, and what kind of support might be needed to replicate them elsewhere
- Documenting of good practices of strategic alliances and linkages are needed to inform programmers, governments and donors



# THANK YOU!



**For more information on the project please contact:**

Simel Esim, Ph.D.

Economist

International Center for  
Research on Women (ICRW)

1717 Massachusetts Avenue,  
NW Suite 302

Washington, DC 20036

Tel: 202-332-2853 ext. 148

Fax: 202-332-8257

E-mail: [sesim@icrw.org](mailto:sesim@icrw.org)

<http://www.icrw.org/>

