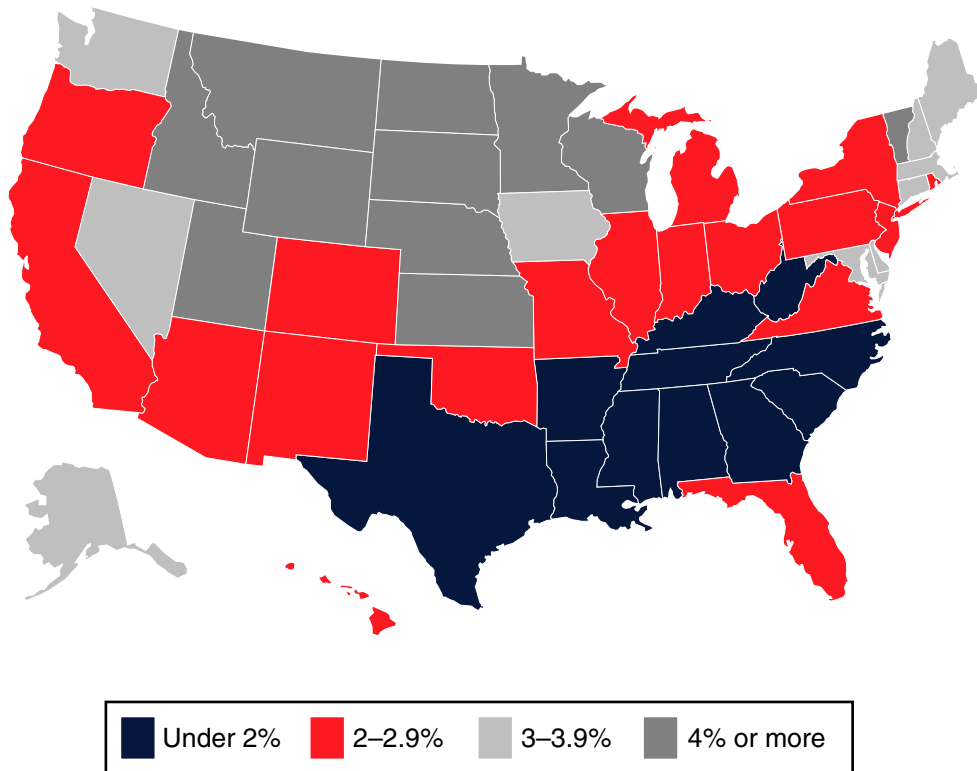


Section 1619 Participants

Chart 6.
Percentage distribution, by state, December 2006

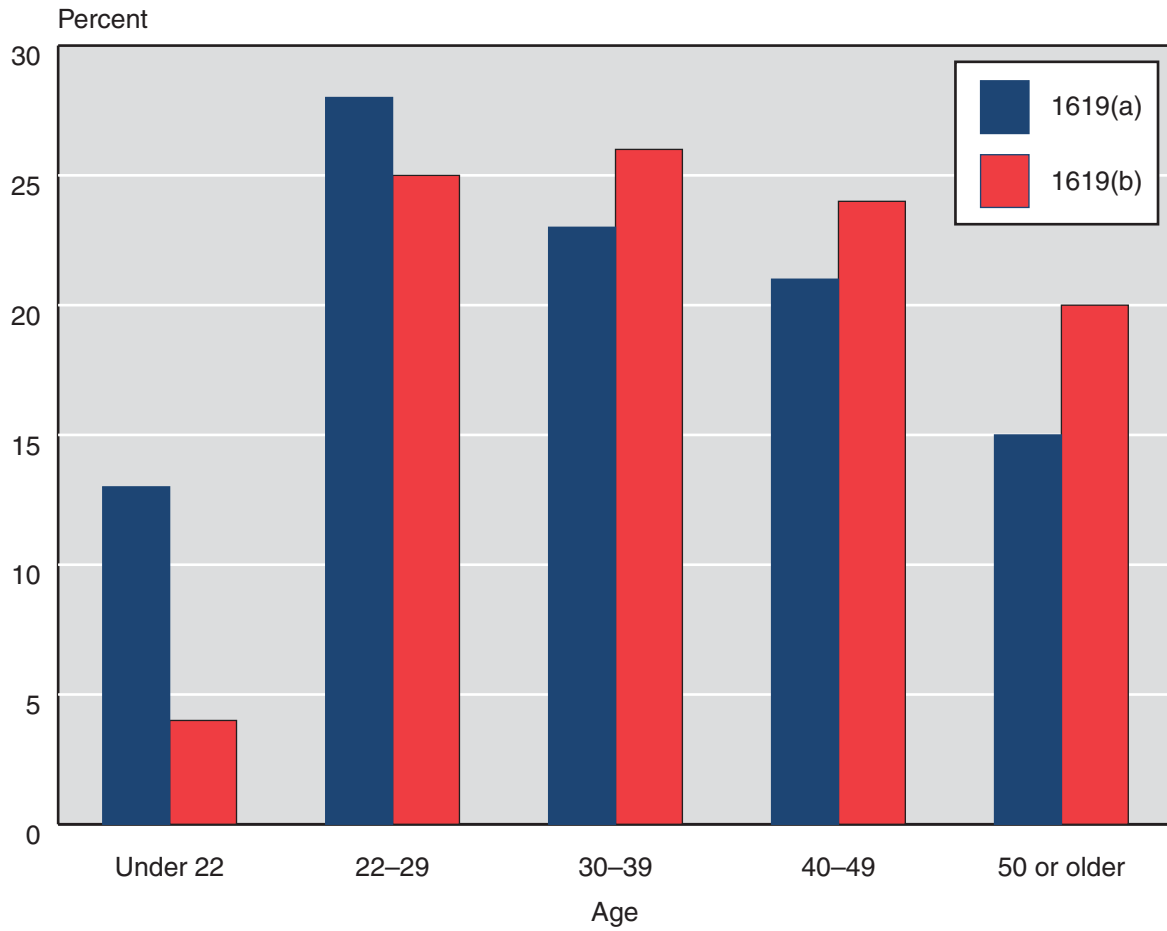
The state distribution of section 1619 cases mirrors that for all working recipients in Chart 2. Proportions of section 1619 cases were higher in the Midwest and lower in the South.



SOURCE: Table 9.

Chart 7.
Percentage distribution, by age, December 2006

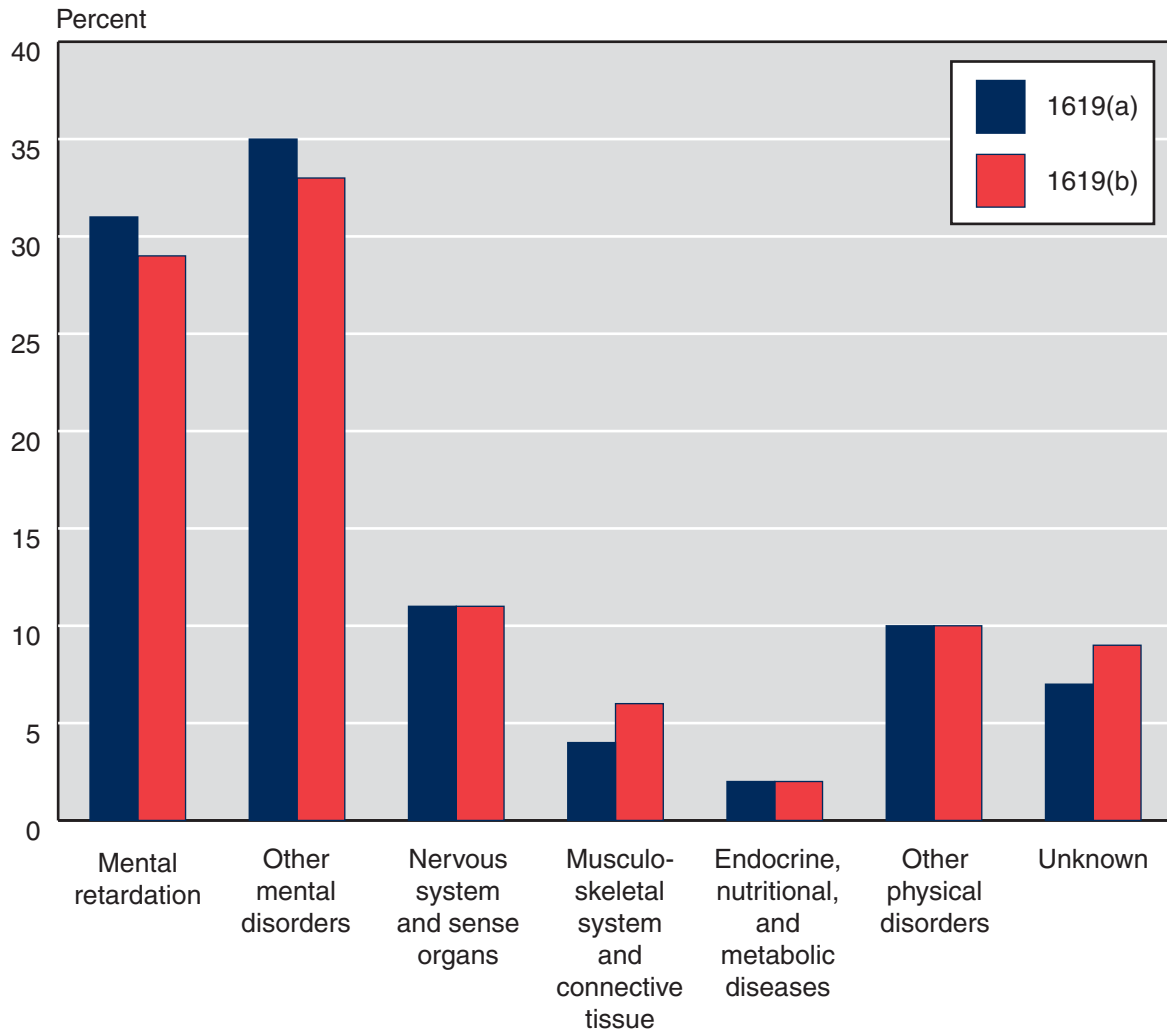
Recipients who benefit from section 1619(a) are younger than those who benefit from 1619(b).



SOURCE: Table 12.

Chart 8.
Percentage distribution, by diagnostic group, December 2006

As with all working recipients, the majority of the section 1619 participants were diagnosed with a mental disorder. Two-thirds of participants under section 1619(a) and three-fifths of participants under section 1619(b) had either mental retardation or other mental disorders.



SOURCE: Table 13.

Table 8.
Number and percentage change from prior period, selected months, 1982–2006

Month	Section 1619(a) participants		Section 1619(b) participants ^a	
	Number	Percentage change from prior period	Number	Percentage change from prior period
December				
1982	287	...	5,515	...
1983	392	36.6	5,165	-6.3
1984	--	--	--	--
1985	--	--	--	--
1986	--	--	--	--
1987	14,559	...	15,632	...
1988	19,920	36.8	15,625	0
1989	25,655	28.8	18,254	16.8
1990	13,994	-45.5	23,517	28.8
1991	15,531	11.0	27,264	15.9
1992	17,603	13.3	31,649	16.1
1993	20,028	13.8	35,299	11.5
1994	24,315	21.4	40,683	15.3
1995	28,060	15.4	47,002	15.5
1996	31,085	10.8	51,905	10.4
1997	34,673	11.5	57,089	10.0
1998	37,271	7.5	59,542	4.3
1999	25,528	-31.5	69,265	16.3
2000	27,542	7.9	83,572	20.7
2001	22,100	-19.8	76,455	-8.5
2002	17,271	-21.9	82,177	7.5
2003	17,130	-0.8	71,097	-13.5
2004	17,115	-0.1	73,681	3.6
2005	17,621	3.0	78,205	6.1
2006	17,394	-1.3	89,350	14.3
2004				
March	16,879	-1.5	69,532	-2.2
June	16,587	-1.7	72,898	4.8
September	16,891	1.8	75,657	3.8
December	17,115	1.3	73,681	-2.6

(Continued)

Table 8.
Number and percentage change from prior period, selected months, 1982–2006—Continued

Month	Section 1619(a) participants		Section 1619(b) participants ^a	
	Number	Percentage change from prior period	Number	Percentage change from prior period
2005				
March	17,082	-0.2	74,247	0.8
June	17,655	3.4	79,368	6.9
September	17,874	1.2	80,134	1.0
December	17,621	-1.4	78,205	-2.4
2006				
March	17,597	-0.1	78,910	0.9
June	18,159	3.2	83,090	5.3
September	18,670	2.8	87,216	5.0
December	17,394	-6.8	89,350	2.4

SOURCE: Social Security Administration, Supplemental Security Record (Characteristic Extract Record format), 100 percent data.

NOTES: When the substantial gainful activity (SGA) level is periodically raised, SSI recipients with earnings below the increased SGA level become eligible for regular SSI benefits rather than the special cash payments under section 1619(a). This can lead to decreases in the number of 1619(a) participants.

. . . = not applicable; -- = not available.

a. Includes blind participants. Of the 89,350 participants in December 2006, 1,444 were blind.

CONTACT: Clark Pickett (410) 965-9016 or ssi.workers@ssa.gov.

Table 9.
Ranking of state or other area, by section 1619 participants as a percentage of all blind and disabled recipients in state aged 18–64, December 2006

State or area	Ranking	All blind and disabled recipients ^a	Section 1619 participants	
			Number	Percent
All areas		4,238,519	103,553	2.44
Wyoming	1	4,356	306	7.02
North Dakota	2	5,591	385	6.89
South Dakota	3	8,179	540	6.60
Iowa	4	31,315	1,729	5.52
Minnesota	5	50,035	2,714	5.42
Vermont	6	9,637	469	4.87
Utah	7	15,940	771	4.84
Nebraska	8	15,795	722	4.57
Montana	9	11,114	501	4.51
Idaho	10	16,073	695	4.32
Kansas	11	26,782	1,147	4.28
Wisconsin	12	62,891	2,536	4.03
Delaware	13	8,568	342	3.99
New Hampshire	14	11,076	431	3.89
Connecticut	15	34,878	1,276	3.66
Massachusetts	16	110,553	3,730	3.37
Washington	17	78,555	2,611	3.32
Nevada	18	19,419	639	3.29
Maryland	19	57,804	1,900	3.29
Maine	20	24,384	752	3.08
Alaska	21	7,333	226	3.08
Hawaii	22	13,144	389	2.96
Colorado	23	36,476	1,074	2.94
New Jersey	24	82,515	2,381	2.89
Oregon	25	41,686	1,194	2.86
Missouri	26	81,828	2,278	2.78
Arizona	27	59,147	1,642	2.78
Virginia	28	83,462	2,292	2.75
Rhode Island	29	19,677	516	2.62
New York	30	344,700	8,910	2.58
Illinois	31	161,294	4,164	2.58
Indiana	32	68,732	1,774	2.58
Florida	33	207,534	5,149	2.48
District of Columbia	34	13,314	328	2.46
Pennsylvania	35	208,306	4,951	2.38
Michigan	36	153,051	3,550	2.32
New Mexico	37	32,265	739	2.29
Ohio	38	176,942	4,011	2.27
California	39	605,127	13,393	2.21
Oklahoma	40	53,324	1,125	2.11

(Continued)

Table 9.
Ranking of state or other area, by section 1619 participants as a percentage of all blind and disabled recipients in state aged 18–64, December 2006—Continued

State or area	Ranking	All blind and disabled recipients ^a	Section 1619 participants	
			Number	Percent
Louisiana	41	95,526	1,831	1.92
North Carolina	42	118,818	2,232	1.88
Arkansas	43	55,838	1,021	1.83
Texas	44	269,469	4,718	1.75
South Carolina	45	63,338	1,107	1.75
Georgia	46	121,663	2,097	1.72
Northern Mariana Islands	47	393	6	1.53
Mississippi	48	72,176	1,088	1.51
Tennessee	49	105,736	1,522	1.44
Alabama	50	103,393	1,437	1.39
West Virginia	51	57,583	788	1.37
Kentucky	52	121,784	1,424	1.17

SOURCE: Social Security Administration, Supplemental Security Record (Characteristic Extract Record format), 100 percent data.

a. Includes section 1619(b) participants.

CONTACT: Clark Pickett (410) 965-9016 or ssi.workers@ssa.gov.

Table 10.
Section 1619(a) participants and their average earnings, by state or other area, selected months,
2005–2006

State or area	December 2005		September 2006		December 2006	
	Number	Average earnings (dollars)	Number	Average earnings (dollars)	Number	Average earnings (dollars)
All areas	17,621	1,111	18,670	1,119	17,394	1,166
Alabama	290	1,074	310	1,075	284	1,120
Alaska	25	1,039	a	1,066	a	1,131
Arizona	260	1,084	265	1,082	281	1,144
Arkansas	147	1,083	176	1,061	164	1,115
California	3,970	1,221	4,515	1,235	4,067	1,279
Colorado	171	1,060	158	1,097	156	1,155
Connecticut	135	1,054	140	1,052	132	1,135
Delaware	43	1,076	46	1,103	46	1,129
District of Columbia	68	1,050	77	1,055	63	1,104
Florida	865	1,065	899	1,065	810	1,115
Georgia	332	1,068	370	1,066	322	1,105
Hawaii	62	1,085	69	1,100	58	1,162
Idaho	95	1,085	127	1,094	91	1,178
Illinois	753	1,058	695	1,064	702	1,110
Indiana	229	1,066	230	1,056	225	1,107
Iowa	177	1,076	174	1,090	159	1,120
Kansas	128	1,077	139	1,076	140	1,129
Kentucky	275	1,088	246	1,091	225	1,153
Louisiana	329	1,083	331	1,073	332	1,118
Maine	98	1,095	100	1,086	91	1,138
Maryland	305	1,082	287	1,091	286	1,134
Massachusetts	601	1,130	614	1,128	544	1,183
Michigan	535	1,057	526	1,068	504	1,126
Minnesota	261	1,066	274	1,064	279	1,106
Mississippi	208	1,050	219	1,068	188	1,114
Missouri	260	1,074	250	1,088	254	1,134
Montana	48	1,086	57	1,077	60	1,153
Nebraska	95	1,117	102	1,080	94	1,123
Nevada	95	1,063	120	1,078	104	1,120
New Hampshire	45	1,097	44	1,053	35	1,153
New Jersey	315	1,086	326	1,101	333	1,136
New Mexico	114	1,065	124	1,102	127	1,148
New York	1,585	1,121	1,691	1,122	1,598	1,172
North Carolina	323	1,052	316	1,058	310	1,102
North Dakota	29	1,048	40	1,059	35	1,126
Ohio	602	1,070	615	1,067	576	1,109
Oklahoma	150	1,066	144	1,071	132	1,132
Oregon	129	1,098	160	1,069	153	1,153
Pennsylvania	745	1,064	773	1,068	728	1,120
Rhode Island	77	1,102	75	1,124	63	1,152

(Continued)

Table 10.
Section 1619(a) participants and their average earnings, by state or other area, selected months,
2005–2006—Continued

State or area	December 2005		September 2006		December 2006	
	Number	Average earnings (dollars)	Number	Average earnings (dollars)	Number	Average earnings (dollars)
South Carolina	171	1,071	167	1,083	153	1,119
South Dakota	52	1,052	63	1,069	44	1,130
Tennessee	237	1,079	247	1,086	223	1,119
Texas	705	1,062	797	1,062	737	1,115
Utah	81	1,105	103	1,071	100	1,119
Vermont	64	1,097	60	1,130	60	1,150
Virginia	362	1,069	349	1,075	331	1,128
Washington	481	1,081	530	1,089	482	1,138
West Virginia	141	1,093	138	1,087	150	1,130
Wisconsin	319	1,080	328	1,079	308	1,117
Wyoming	31	1,053	41	1,069	33	1,079
Outlying area						
Northern Mariana Islands	3	1,018	a	964	a	964

SOURCE: Social Security Administration, Supplemental Security Record (Characteristic Extract Record format), 100 percent data.

a. Data are not shown to avoid disclosure of information for particular individuals.

CONTACT: Clark Pickett (410) 965-9016 or ssi.workers@ssa.gov.

Table 11.
Section 1619(b) participants and their average earnings, by state or other area, selected months,
2005–2006

State or area	December 2005		September 2006		December 2006	
	Number	Average earnings (dollars)	Number	Average earnings (dollars)	Number	Average earnings (dollars)
All areas	78,205	1,118	87,216	1,173	89,350	1,193
Alabama	1,002	1,121	1,170	1,185	1,195	1,224
Alaska ^a	186	1,222	229	1,358	b	1,304
Arizona	1,126	1,171	1,405	1,252	1,424	1,280
Arkansas	785	1,052	900	1,109	897	1,147
California	8,254	1,420	9,345	1,527	9,945	1,549
Colorado	848	1,148	903	1,166	938	1,177
Connecticut ^a	1,051	1,043	1,188	1,114	1,171	1,130
Delaware	251	1,224	286	1,258	303	1,244
District of Columbia	251	1,429	267	1,431	282	1,443
Florida	3,836	1,161	4,481	1,198	4,530	1,233
Georgia	1,640	1,110	1,828	1,146	1,839	1,153
Hawaii ^a	272	1,246	338	1,248	338	1,311
Idaho ^a	520	980	610	1,019	613	1,078
Illinois ^a	3,044	1,095	3,496	1,175	3,603	1,182
Indiana ^a	1,462	973	1,532	1,035	1,589	1,057
Iowa	1,496	843	1,605	860	1,592	891
Kansas ^a	949	951	1,002	998	1,037	1,015
Kentucky	1,150	1,155	1,243	1,249	1,249	1,280
Louisiana	1,370	1,071	1,424	1,159	1,539	1,187
Maine	636	1,000	702	1,037	677	1,056
Maryland	1,429	1,189	1,637	1,225	1,658	1,257
Massachusetts	2,957	1,240	3,235	1,278	3,295	1,288
Michigan	3,042	1,024	3,176	1,059	3,159	1,064
Minnesota ^a	2,215	935	2,469	975	2,493	973
Mississippi	805	1,125	917	1,157	938	1,202
Missouri ^a	1,774	917	2,079	961	2,100	986
Montana	405	906	475	926	456	928
Nebraska ^a	590	919	633	961	639	979
Nevada ^a	428	1,278	511	1,371	561	1,377
New Hampshire ^a	367	1,023	395	1,055	402	1,064
New Jersey	1,868	1,182	2,029	1,211	2,124	1,249
New Mexico	626	1,089	649	1,131	645	1,124
New York	6,731	1,270	7,341	1,301	7,568	1,325
North Carolina	1,792	1,054	1,949	1,082	1,974	1,073
North Dakota ^a	330	879	345	872	357	867
Ohio ^a	3,120	965	3,490	1,002	3,546	1,027
Oklahoma ^a	798	900	1,000	987	1,019	1,002
Oregon ^a	1,005	916	1,060	1,017	1,079	1,026
Pennsylvania	3,844	1,082	4,234	1,125	4,361	1,136
Rhode Island	402	1,112	427	1,224	468	1,216

(Continued)

Table 11.
Section 1619(b) participants and their average earnings, by state or other area, selected months,
2005–2006—Continued

State or area	December 2005		September 2006		December 2006	
	Number	Average earnings (dollars)	Number	Average earnings (dollars)	Number	Average earnings (dollars)
South Carolina	879	984	963	1,008	992	1,013
South Dakota	457	849	480	839	508	863
Tennessee	1,182	1,101	1,330	1,143	1,360	1,160
Texas	3,559	1,054	4,040	1,128	4,131	1,139
Utah ^a	519	980	652	982	690	1,038
Vermont	379	1,083	416	1,130	418	1,090
Virginia ^a	1,700	1,113	1,936	1,174	2,018	1,192
Washington	1,902	1,163	2,197	1,219	2,197	1,242
West Virginia	549	1,197	655	1,301	654	1,332
Wisconsin	2,199	925	2,271	951	2,284	962
Wyoming	220	887	267	979	278	999
Outlying area						
Northern Mariana Islands	3	808	4	859	b	1,103

SOURCE: Social Security Administration, Supplemental Security Record (Characteristic Extract Record format), 100 percent data.

a. The Social Security Administration identifies persons as potential participants; the state makes final Medicaid determinations.

b. Data are not shown to avoid disclosure of information for particular individuals.

CONTACT: Clark Pickett (410) 965-9016 or ssi.workers@ssa.gov.

Table 12.
Number and average earnings, by selected characteristics, December 2006

Characteristic	Section 1619(a) participants		Section 1619(b) participants	
	Number	Average earnings (dollars)	Number	Average earnings (dollars)
All participants	17,394	1,166	89,350	1,193
Age				
Under 18	119	1,083	235	--
18–21	2,162	1,134	3,784	1,363
22–29	4,877	1,155	22,558	1,253
30–39	3,952	1,173	23,155	1,196
40–49	3,681	1,180	21,331	1,161
50–59	2,091	1,183	12,265	1,164
60–64	401	1,193	3,296	1,051
65 or older	111	1,225	2,726	955
Sex				
Male	9,582	1,176	46,968	1,227
Female	7,812	1,154	42,382	1,156
Earned income ^a				
Wages	16,948	1,168	86,788	1,201
Self-employment	542	1,111	3,376	1,079
Earnings (dollars)				
Less than 400	10,523	268
400–499	6,288	436
500–599	7,582	530
600–699	7,547	631
700–899	10,901	777
900–1,199	9,952	1,033	8,830	1,012
1,200 or more	7,442	1,343	37,679	1,987
Unearned income ^a				
None	15,776	1,168	30,470	1,877
Social Security	484	1,119	54,688	771
Other pensions	32	1,137	540	1,128
Income based on need	10	1,040	64	1,401
Asset income	610	1,166	3,752	1,095
Other	535	1,138	4,328	1,363
Work incentives ^a				
Plans to achieve self-support ^b	141	1,513	0	0
Impairment-related work expenses	359	1,229	1,461	1,023
Blind work expenses	2	2,047	588	1,646

SOURCE: Social Security Administration, Supplemental Security Record (Characteristic Extract Record format), 100 percent data.

NOTE: -- = not available; . . . = not applicable.

a. The sum of the entries may be greater than the total because some recipients may receive more than one type of earned or unearned income or both earned and unearned income, or they may benefit from more than one work incentive provision.

b. Includes 22 persons with a PASS that excludes only resources.

CONTACT: Clark Pickett (410) 965-9016 or ssi.workers@ssa.gov.

Table 13.
Percentage distribution of participants aged 18–64, by diagnostic group, December 2006

Diagnostic group	All blind and disabled recipients	Section 1619(a) participants	Section 1619(b) participants
Total			
Number	4,152,130	17,164	86,389
Percent	100.0	100.0	100.0
Congenital anomalies	0.7	0.8	0.8
Endocrine, nutritional, and metabolic diseases	3.4	1.7	1.8
Infectious and parasitic diseases	1.6	1.6	1.7
Injuries	2.6	1.9	2.3
Mental disorders			
Retardation	21.6	30.8	29.4
Schizophrenia	9.7	8.1	8.4
Other	26.8	27.1	24.2
Neoplasms	1.2	1.0	1.2
Diseases of the—			
Blood and blood-forming organs	0.4	0.7	0.7
Circulatory system	4.4	1.4	1.7
Digestive system	0.9	0.5	0.6
Genitourinary system	1.0	1.0	1.2
Musculoskeletal system and connective tissue	10.3	4.3	5.5
Nervous system and sense organs ^a	7.8	10.8	10.5
Respiratory system	2.0	1.0	0.9
Skin and subcutaneous tissue	0.2	0.1	0.1
Other	0.2	0.4	0.3
Unknown	5.2	6.6	8.5

SOURCE: Social Security Administration, Supplemental Security Record (Characteristic Extract Record format), 100 percent data.

a. Most disabled recipients classified as blind are included in this category. A few blind recipients with a primary impairment other than diseases of the eye are coded in other categories. Also, a few recipients are classified with diseases of the eye, but their impairment does not meet the definition of blindness.

CONTACT: Clark Pickett (410) 965-9016 or ssi.workers@ssa.gov.