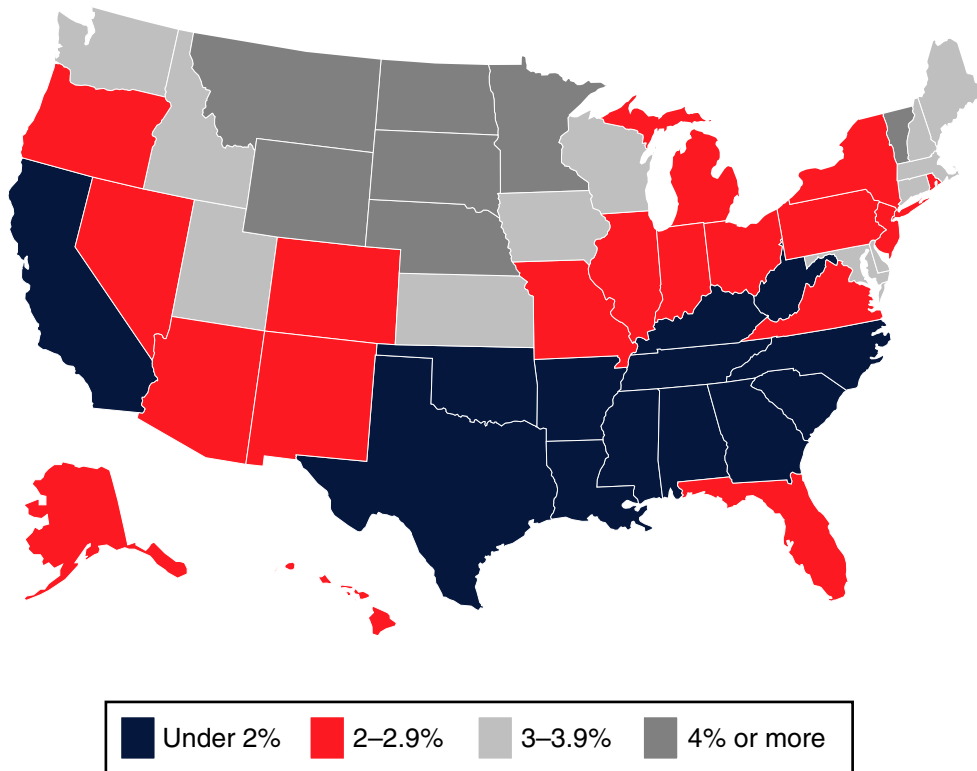


Section 1619 Participants

Chart 6.
Percentage distribution, by state, December 2005

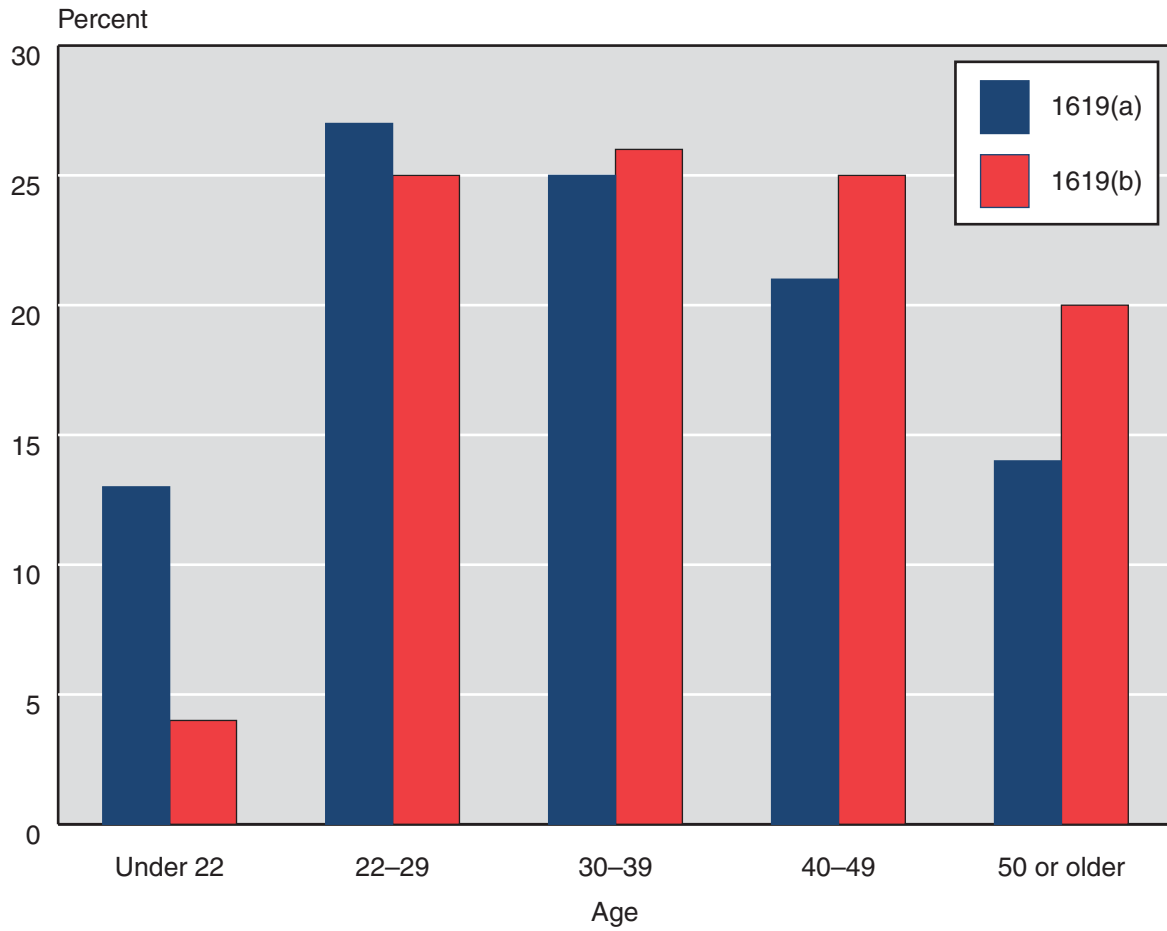
The state distribution of section 1619 cases mirrors that for all working recipients in Chart 2. Proportions of section 1619 cases were higher in the Midwest and lower in the South.



SOURCE: Table 9.

Chart 7.
Percentage distribution, by age, December 2005

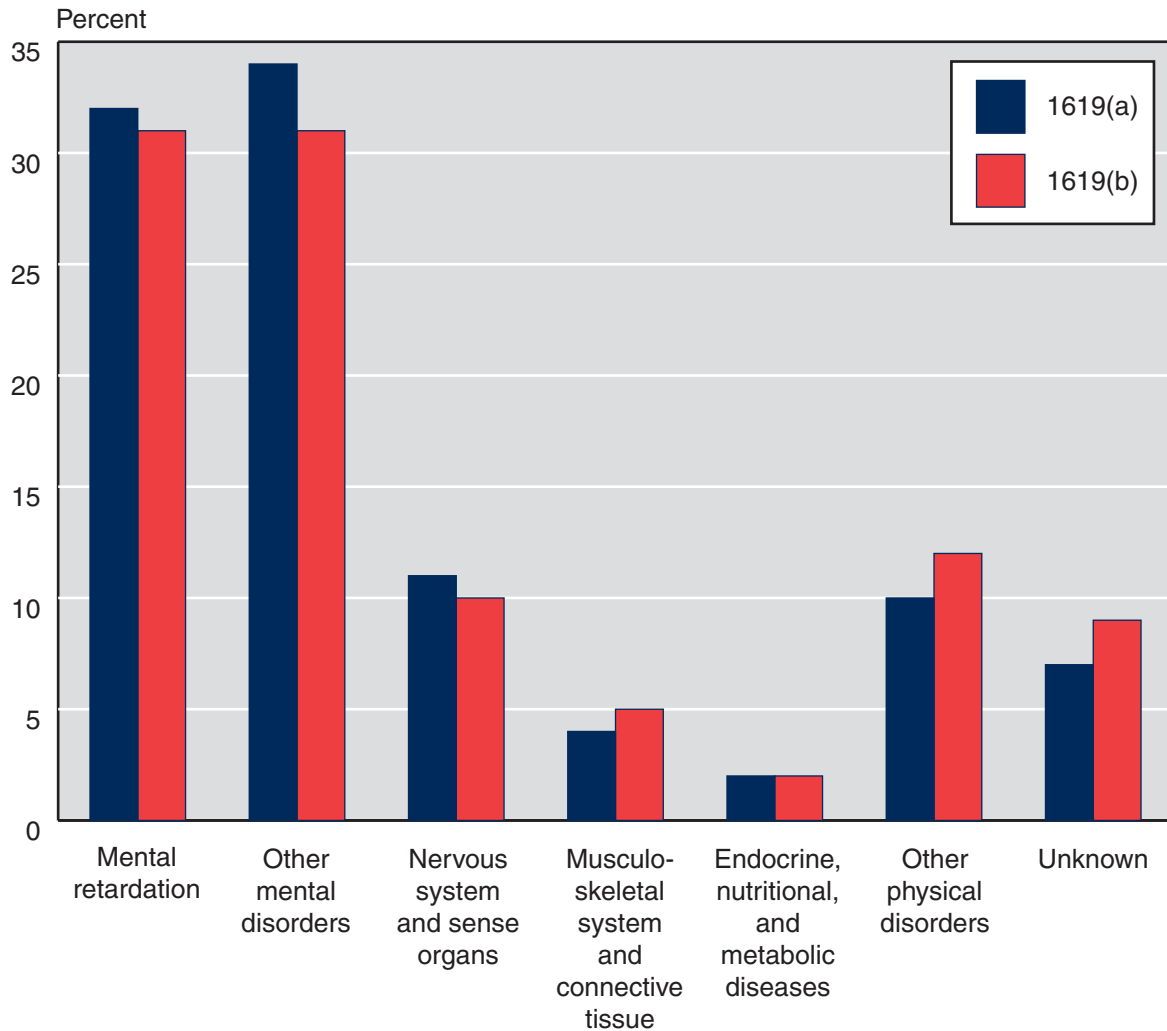
Recipients who benefit from section 1619(a) are younger than those who benefit from 1619(b).



SOURCE: Table 12.

Chart 8.
Percentage distribution, by diagnostic group, December 2005

As with all working recipients, the majority of the section 1619 participants were diagnosed with a mental disorder. Two-thirds of participants under section 1619(a) and three-fifths of participants under section 1619(b) had either mental retardation or other mental disorders.



SOURCE: Table 13.

Table 8.
Number and percentage change from prior period, selected months, 1982–2005

Month	Section 1619(a) participants		Section 1619(b) participants ^a	
	Number	Percentage change from prior period	Number	Percentage change from prior period
December				
1982	287	...	5,515	...
1983	392	36.6	5,165	-6.3
1984	--	--	--	--
1985	--	--	--	--
1986	--	--	--	--
1987	14,559	...	15,632	...
1988	19,920	36.8	15,625	0
1989	25,655	28.8	18,254	16.8
1990	13,994	-45.5	23,517	28.8
1991	15,531	11.0	27,264	15.9
1992	17,603	13.3	31,649	16.1
1993	20,028	13.8	35,299	11.5
1994	24,315	21.4	40,683	15.3
1995	28,060	15.4	47,002	15.5
1996	31,085	10.8	51,905	10.4
1997	34,673	11.5	57,089	10.0
1998	37,271	7.5	59,542	4.3
1999	25,528	-31.5	69,265	16.3
2000	27,542	7.9	83,572	20.7
2001	22,100	-19.8	76,455	-8.5
2002	17,271	-21.9	82,177	7.5
2003	17,130	-0.8	71,097	-13.5
2004	17,115	-0.1	73,681	3.6
2005	17,621	3.0	78,205	6.1
2003				
March	16,771	-2.9	74,558	-9.3
June	16,539	-1.4	72,016	-3.4
September	16,562	0.1	73,576	2.2
December	17,130	3.4	71,097	-3.4

(Continued)

Table 8.
Number and percentage change from prior period, selected months, 1982–2005—Continued

Month	Section 1619(a) participants		Section 1619(b) participants ^a	
	Number	Percentage change from prior period	Number	Percentage change from prior period
2004				
March	16,879	-1.5	69,532	-2.2
June	16,587	-1.7	72,898	4.8
September	16,891	1.8	75,657	3.8
December	17,115	1.3	73,681	-2.6
2005				
March	17,082	-0.2	74,247	0.8
June	17,655	3.4	79,368	6.9
September	17,874	1.2	80,134	1.0
December	17,621	-1.4	78,205	-2.4

SOURCE: Social Security Administration, Supplemental Security Record (Characteristic Extract Record format), 100 percent data.

NOTES: When the substantial gainful activity (SGA) level is periodically raised, SSI recipients with earnings below the increased SGA level become eligible for regular SSI benefits rather than the special cash payments under section 1619(a). This can lead to decreases in the number of 1619(a) participants.

. . . = not applicable; -- = not available.

a. Includes blind participants. Of the 75,583 participants in December 2005, 1,228 were blind.

CONTACT: Clark Pickett (410) 965-9016 or ssi.workers@ssa.gov.

Table 9.
Ranking of state or other area, by section 1619 participants as a percentage of all blind and disabled recipients in state aged 18–64, December 2005

State or area	Ranking	All blind and disabled recipients ^a	Section 1619 participants	
			Number	Percent
All areas		4,158,453	92,950	2.24
North Dakota	1	5,474	353	6.45
South Dakota	2	8,079	495	6.13
Wyoming	3	4,308	247	5.73
Iowa	4	30,922	1,652	5.34
Minnesota	5	48,104	2,433	5.06
Vermont	6	9,379	431	4.60
Nebraska	7	15,594	671	4.30
Montana	8	10,816	443	4.10
Wisconsin	9	61,877	2,469	3.99
Kansas	10	26,583	1,043	3.92
Idaho	11	15,493	606	3.91
Utah	12	15,127	585	3.87
New Hampshire	13	10,399	402	3.87
Connecticut	14	34,097	1,166	3.42
Delaware	15	8,295	283	3.41
Massachusetts	16	108,545	3,444	3.17
Washington	17	76,381	2,319	3.04
Maine	18	23,886	718	3.01
Maryland	19	56,490	1,694	3.00
Alaska	20	7,033	204	2.90
Colorado	21	35,530	1,001	2.82
Nevada	22	18,558	507	2.73
Oregon	23	40,585	1,101	2.71
New Jersey	24	81,219	2,116	2.61
Hawaii	25	12,843	326	2.54
Indiana	26	66,968	1,661	2.48
Virginia	27	81,394	2,017	2.48
Missouri	28	79,844	1,974	2.47
Rhode Island	29	19,273	465	2.41
District of Columbia	30	12,821	304	2.37
New York	31	342,309	8,081	2.36
Arizona	32	58,328	1,341	2.30
Michigan	33	151,213	3,473	2.30
Illinois	34	159,328	3,657	2.30
New Mexico	35	31,416	708	2.25
Pennsylvania	36	202,597	4,485	2.21
Florida	37	204,821	4,530	2.21
Ohio	38	174,435	3,619	2.07
California	39	598,454	11,678	1.95
Oklahoma	40	51,138	921	1.80

(Continued)

Table 9.
Ranking of state or other area, by section 1619 participants as a percentage of all blind and disabled recipients in state aged 18–64, December 2005—Continued

State or area	Ranking	All blind and disabled recipients ^a	Section 1619 participants	
			Number	Percent
North Carolina	41	115,687	2,061	1.78
Louisiana	42	93,942	1,650	1.76
Arkansas	43	54,505	890	1.63
South Carolina	44	62,895	1,017	1.62
Texas	45	256,784	4,128	1.61
Georgia	46	119,503	1,911	1.60
Northern Mariana Islands	47	384	6	1.56
Mississippi	48	72,173	981	1.36
Tennessee	49	103,983	1,368	1.32
Alabama	50	101,533	1,259	1.24
West Virginia	51	56,459	677	1.20
Kentucky	52	120,649	1,379	1.14

SOURCE: Social Security Administration, Supplemental Security Record (Characteristic Extract Record format), 100 percent data.

a. Includes section 1619(b) participants.

CONTACT: Clark Pickett (410) 965-9016 or ssi.workers@ssa.gov.

Table 10.
Section 1619(a) participants and their average earnings, by state or other area, selected months,
2004–2005

State or area	December 2004		September 2005		December 2005	
	Number	Average earnings (dollars)	Number	Average earnings (dollars)	Number	Average earnings (dollars)
All areas	17,115	1,076	17,874	1,081	17,621	1,111
Alabama	250	1,037	284	1,029	290	1,074
Alaska	32	1,133	30	1,006	25	1,039
Arizona	206	1,044	240	1,059	260	1,084
Arkansas	152	1,013	150	1,028	147	1,083
California	3,788	1,181	4,117	1,194	3,970	1,221
Colorado	163	1,044	175	1,029	171	1,060
Connecticut	144	1,042	135	1,022	135	1,054
Delaware	42	1,032	47	1,044	43	1,076
District of Columbia	60	1,040	61	1,038	68	1,050
Florida	697	1,030	823	1,034	865	1,065
Georgia	338	1,014	332	1,033	332	1,068
Hawaii	62	1,033	65	1,052	62	1,085
Idaho	91	1,062	84	1,038	95	1,085
Illinois	701	1,024	736	1,035	753	1,058
Indiana	253	1,040	236	1,037	229	1,066
Iowa	185	1,051	171	1,055	177	1,076
Kansas	152	1,068	121	1,061	128	1,077
Kentucky	238	1,031	260	1,056	275	1,088
Louisiana	335	1,032	347	1,034	329	1,083
Maine	96	1,080	98	1,060	98	1,095
Maryland	310	1,041	301	1,050	305	1,082
Massachusetts	582	1,082	595	1,086	601	1,130
Michigan	606	1,033	562	1,041	535	1,057
Minnesota	262	1,059	264	1,038	261	1,066
Mississippi	194	1,017	199	1,023	208	1,050
Missouri	257	1,043	272	1,041	260	1,074
Montana	49	1,034	53	1,045	48	1,086
Nebraska	79	1,045	96	1,050	95	1,117
Nevada	78	1,065	90	1,040	95	1,063
New Hampshire	63	1,057	48	1,041	45	1,097
New Jersey	321	1,037	352	1,047	315	1,086
New Mexico	100	1,024	120	1,019	114	1,065
New York	1,617	1,086	1,643	1,087	1,585	1,121
North Carolina	292	1,019	333	1,026	323	1,052
North Dakota	37	1,032	26	1,024	29	1,048
Ohio	677	1,041	660	1,038	602	1,070
Oklahoma	143	1,022	154	1,038	150	1,066
Oregon	125	1,038	133	1,053	129	1,098
Pennsylvania	775	1,041	738	1,040	745	1,064
Rhode Island	85	1,099	87	1,067	77	1,102

(Continued)

Table 10.
Section 1619(a) participants and their average earnings, by state or other area, selected months,
2004–2005—Continued

State or area	December 2004		September 2005		December 2005	
	Number	Average earnings (dollars)	Number	Average earnings (dollars)	Number	Average earnings (dollars)
South Carolina	136	1,030	158	1,037	171	1,071
South Dakota	60	1,063	50	1,014	52	1,052
Tennessee	256	1,047	250	1,042	237	1,079
Texas	643	1,024	714	1,031	705	1,062
Utah	79	1,023	75	1,036	81	1,105
Vermont	62	1,097	56	1,081	64	1,097
Virginia	321	1,043	359	1,036	362	1,069
Washington	421	1,056	476	1,055	481	1,081
West Virginia	127	1,039	152	1,072	141	1,093
Wisconsin	341	1,050	316	1,049	319	1,080
Wyoming	29	1,034	27	1,001	31	1,053
Outlying area						
Northern Mariana Islands	3	945	3	1,018	3	1,018

SOURCE: Social Security Administration, Supplemental Security Record (Characteristic Extract Record format), 100 percent data.

CONTACT: Clark Pickett (410) 965-9016 or ssi.workers@ssa.gov.

Table 11.
Section 1619(b) participants and their average earnings, by state or other area, selected months,
2004–2005

State or area	December 2004		September 2005		December 2005	
	Number	Average earnings (dollars)	Number	Average earnings (dollars)	Number	Average earnings (dollars)
All areas	73,681	1,070	80,134	1,107	78,205	1,118
Alabama	903	1,110	1,040	1,096	1,002	1,121
Alaska ^a	178	1,183	187	1,249	186	1,222
Arizona	944	1,104	1,134	1,164	1,126	1,171
Arkansas	778	1,004	827	1,029	785	1,052
California	7,216	1,399	7,961	1,439	8,254	1,420
Colorado	809	1,021	879	1,138	848	1,148
Connecticut ^a	1,056	979	1,131	1,034	1,051	1,043
Delaware	246	1,123	265	1,201	251	1,224
District of Columbia	239	1,441	242	1,438	251	1,429
Florida	3,248	1,094	3,861	1,121	3,836	1,161
Georgia	1,558	1,055	1,688	1,100	1,640	1,110
Hawaii ^a	203	1,148	270	1,210	272	1,246
Idaho ^a	470	957	539	1,008	520	980
Illinois ^a	2,875	1,078	3,187	1,107	3,044	1,095
Indiana ^a	1,434	944	1,522	966	1,462	973
Iowa	1,419	819	1,519	847	1,496	843
Kansas ^a	930	867	986	929	949	951
Kentucky	1,141	1,069	1,189	1,164	1,150	1,155
Louisiana	1,464	1,001	1,421	1,052	1,370	1,071
Maine	662	988	706	985	636	1,000
Maryland	1,241	1,131	1,459	1,181	1,429	1,189
Massachusetts	2,979	1,200	3,046	1,210	2,957	1,240
Michigan	3,124	989	3,212	1,026	3,042	1,024
Minnesota ^a	2,150	863	2,338	922	2,215	935
Mississippi	785	1,123	862	1,104	805	1,125
Missouri ^a	1,717	879	1,841	900	1,774	917
Montana	383	876	424	880	405	906
Nebraska ^a	579	933	581	951	590	919
Nevada ^a	392	1,211	426	1,244	428	1,278
New Hampshire ^a	339	985	375	984	367	1,023
New Jersey	1,752	1,166	1,906	1,185	1,868	1,182
New Mexico	568	1,080	647	1,109	626	1,089
New York	6,242	1,221	6,791	1,247	6,731	1,270
North Carolina	1,629	1,009	1,814	1,036	1,792	1,054
North Dakota ^a	319	815	335	881	330	879
Ohio ^a	3,072	950	3,256	974	3,120	965
Oklahoma ^a	676	840	789	898	798	900
Oregon ^a	945	900	1,036	939	1,005	916
Pennsylvania	3,587	1,025	4,003	1,074	3,844	1,082
Rhode Island	367	1,105	410	1,136	402	1,112

(Continued)

Table 11.
Section 1619(b) participants and their average earnings, by state or other area, selected months,
2004–2005—Continued

State or area	December 2004		September 2005		December 2005	
	Number	Average earnings (dollars)	Number	Average earnings (dollars)	Number	Average earnings (dollars)
South Carolina	858	945	903	981	879	984
South Dakota	458	776	453	798	457	849
Tennessee	1,178	1,085	1,303	1,107	1,182	1,101
Texas	3,342	1,008	3,675	1,042	3,559	1,054
Utah ^a	471	889	525	965	519	980
Vermont	378	946	365	964	379	1,083
Virginia ^a	1,554	1,043	1,767	1,118	1,700	1,113
Washington	1,721	1,116	1,895	1,143	1,902	1,163
West Virginia	525	1,140	563	1,184	549	1,197
Wisconsin	2,351	884	2,338	907	2,199	925
Wyoming	222	827	238	894	220	887
Outlying area						
Northern Mariana Islands	4	1,080	4	906	3	808

SOURCE: Social Security Administration, Supplemental Security Record (Characteristic Extract Record format), 100 percent data.

a. The Social Security Administration identifies persons as potential participants; the state makes final Medicaid determinations.

CONTACT: Clark Pickett (410) 965-9016 or ssi.workers@ssa.gov.

Table 12.
Number and average earnings, by selected characteristics, December 2005

Characteristic	Section 1619(a) participants		Section 1619(b) participants	
	Number	Average earnings (dollars)	Number	Average earnings (dollars)
All participants	17,621	1,111	78,205	1,118
Age				
Under 18	135	1,059	185	--
18–21	2,139	1,072	3,176	1,255
22–29	4,752	1,104	19,252	1,167
30–39	4,358	1,119	20,653	1,112
40–49	3,774	1,127	19,234	1,095
50–59	1,982	1,120	10,379	1,107
60–64	362	1,137	2,889	1,003
65 or older	119	1,132	2,437	926
Sex				
Male	9,750	1,122	40,782	1,144
Female	7,871	1,098	37,423	1,089
Earned income ^a				
Wages	17,148	1,113	75,876	1,125
Self-employment	586	1,065	2,997	1,036
Earnings (dollars)				
Less than 400	9,954	268
400–499	6,106	436
500–599	7,205	529
600–699	6,791	630
700–899	1,062	879	9,947	775
900–1,199	10,849	1,017	7,757	1,011
1,200 or more	5,710	1,334	30,445	1,920
Unearned income ^a				
None	15,809	1,113	24,970	1,784
Social Security	545	1,074	49,837	747
Other pensions	27	1,100	488	994
Income based on need	7	1,043	41	1,312
Asset income	736	1,133	3,693	1,030
Other	563	1,077	3,765	1,259
Work incentives ^a				
Plans for achieving self-support ^b	176	1,439	0	0
Impairment-related work expenses	446	1,197	1,486	989
Blind work expenses	3	1,869	545	1,503

SOURCE: Social Security Administration, Supplemental Security Record (Characteristic Extract Record format), 100 percent data.

NOTE: -- = not available; . . . = not applicable.

a. The sum of the entries may be greater than the total because some recipients may receive more than one type of earned or unearned income or both earned and unearned income, or they may benefit from more than one work incentive provision.

b. Includes 18 persons with a PASS that excludes only resources.

CONTACT: Clark Pickett (410) 965-9016 or ssi.workers@ssa.gov.

Table 13.
Percentage distribution of participants aged 18–64, by diagnostic group, December 2005

Diagnostic group	All blind and disabled recipients	Section 1619(a) participants	Section 1619(b) participants
Total			
Number	4,082,870	17,367	75,583
Percent	100.0	100.0	100.0
Congenital anomalies	0.6	0.7	0.8
Endocrine, nutritional, and metabolic diseases	3.5	1.8	1.9
Infectious and parasitic diseases	1.6	1.6	1.8
Injuries	2.6	1.8	2.3
Mental disorders			
Retardation	21.7	32.3	30.6
Schizophrenia	9.9	8.4	8.6
Other	26.1	25.7	22.6
Neoplasms	1.1	1.1	1.1
Diseases of the—			
Blood and blood-forming organs	0.4	0.6	0.7
Circulatory system	4.5	1.5	1.7
Digestive system	0.9	0.5	0.6
Genitourinary system	1.0	1.0	1.2
Musculoskeletal system and connective tissue	10.2	3.9	5.3
Nervous system and sense organs ^a	7.8	10.8	10.4
Respiratory system	2.1	1.0	1.0
Skin and subcutaneous tissue	0.2	0.1	0.1
Other	0.2	0.4	0.3
Unknown	5.6	6.8	9.0

SOURCE: Social Security Administration, Supplemental Security Record (Characteristic Extract Record format), 100 percent data.

a. Most disabled recipients classified as blind are included in this category. A few blind recipients with a primary impairment other than diseases of the eye are coded in other categories. Also, a few recipients are classified with diseases of the eye, but their impairment does not meet the definition of blindness.

CONTACT: Clark Pickett (410) 965-9016 or ssi.workers@ssa.gov.