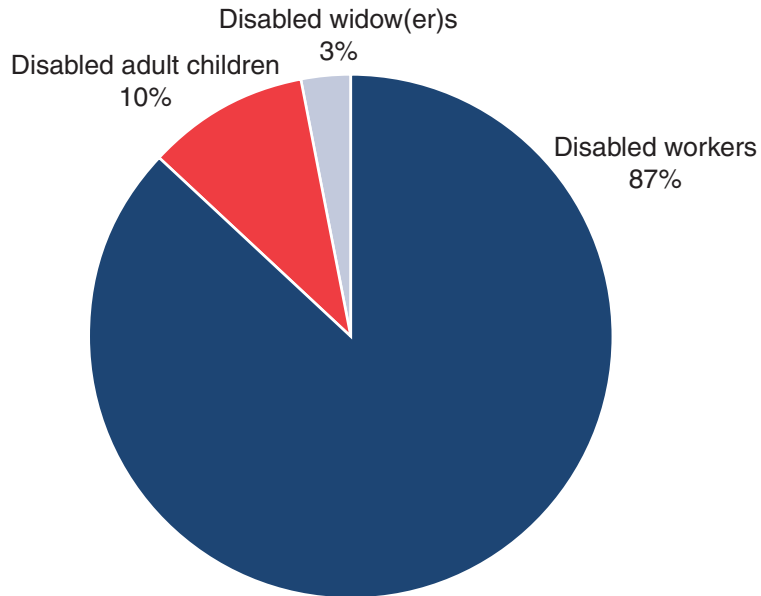


Chart 1.

All Social Security disabled beneficiaries in current-payment status, December 2005

In December 2005, about 7.5 million people received Social Security disability benefits as disabled workers, disabled widow(er)s, or disabled adult children. The majority (87 percent) were disabled workers, 10 percent were disabled adult children, and 3 percent were disabled widow(er)s.



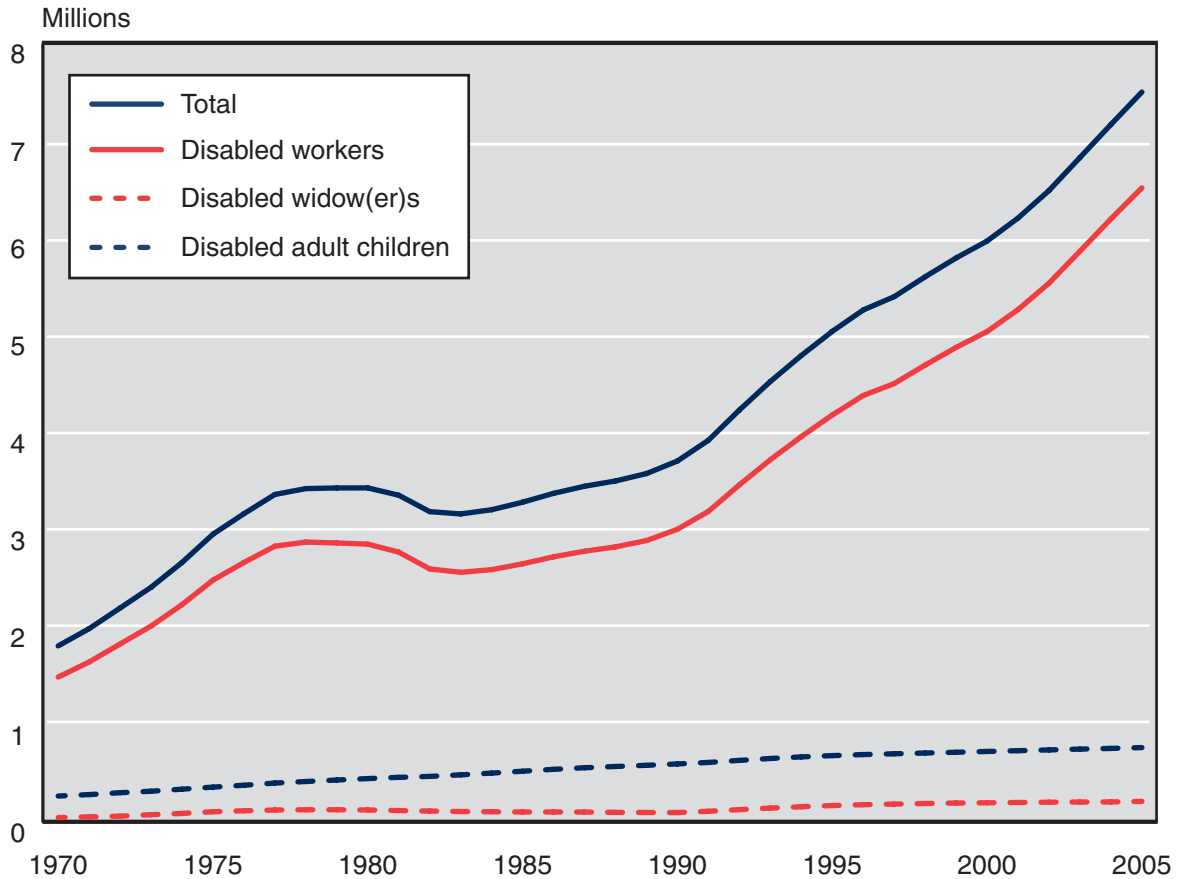
SOURCE: Table 3.

Beneficiaries in Current-Payment Status

Chart 2.

All Social Security disabled beneficiaries in current-payment status, December 1970–2005

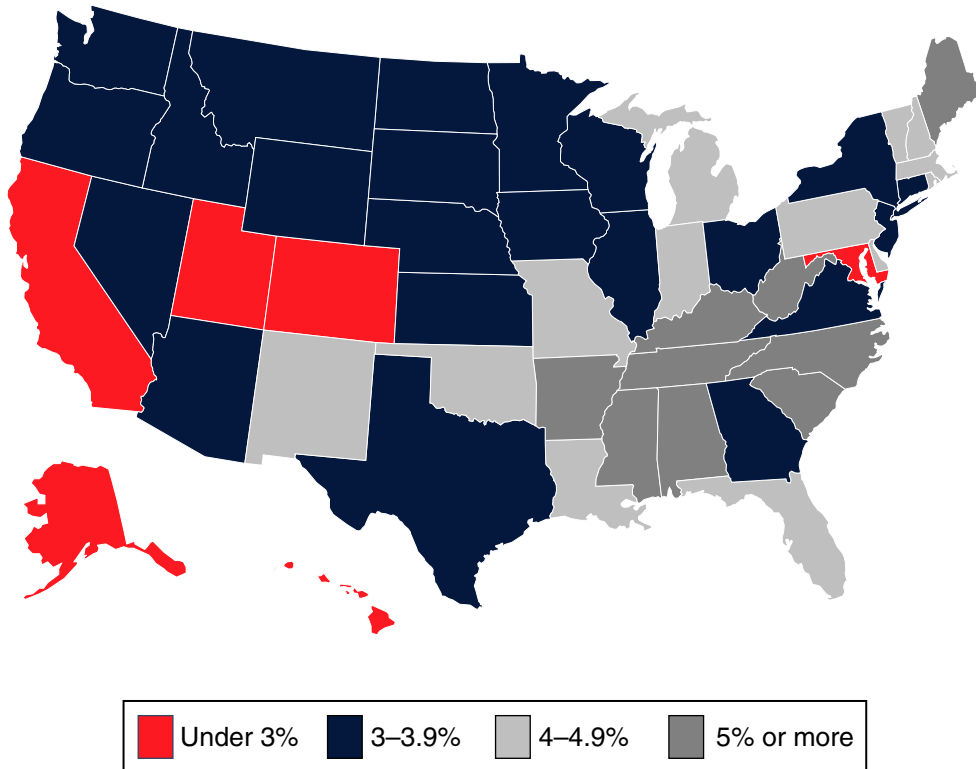
The number of disabled workers grew steadily until 1978, declined slightly until 1983, started to increase again in 1984, and began to increase more rapidly beginning in 1990. The growth in the 1980s and 1990s was the result of demographic changes, a recession, and legislative changes. The number of disabled adult children has grown slightly, and the number of disabled widow(er)s has remained fairly level. In December 2005, more than 6.5 million disabled workers, nearly 769,000 disabled adult children, and just under 216,000 disabled widow(er)s received disability benefits.



SOURCE: Table 3.

Chart 3.**Disabled beneficiaries aged 18–64 in current-payment status as a percentage of state population aged 18–64, December 2005**

Disabled beneficiaries aged 18–64 in current-payment status accounted for about 3.8 percent of the population aged 18–64 in the United States. In 6 states and the District of Columbia, they represented less than 3 percent of the state population. The states with the highest rates of disabled beneficiaries—5 percent or more—were Alabama, Arkansas, Kentucky, Maine, Mississippi, North Carolina, South Carolina, Tennessee, and West Virginia.



SOURCE: Table 8.

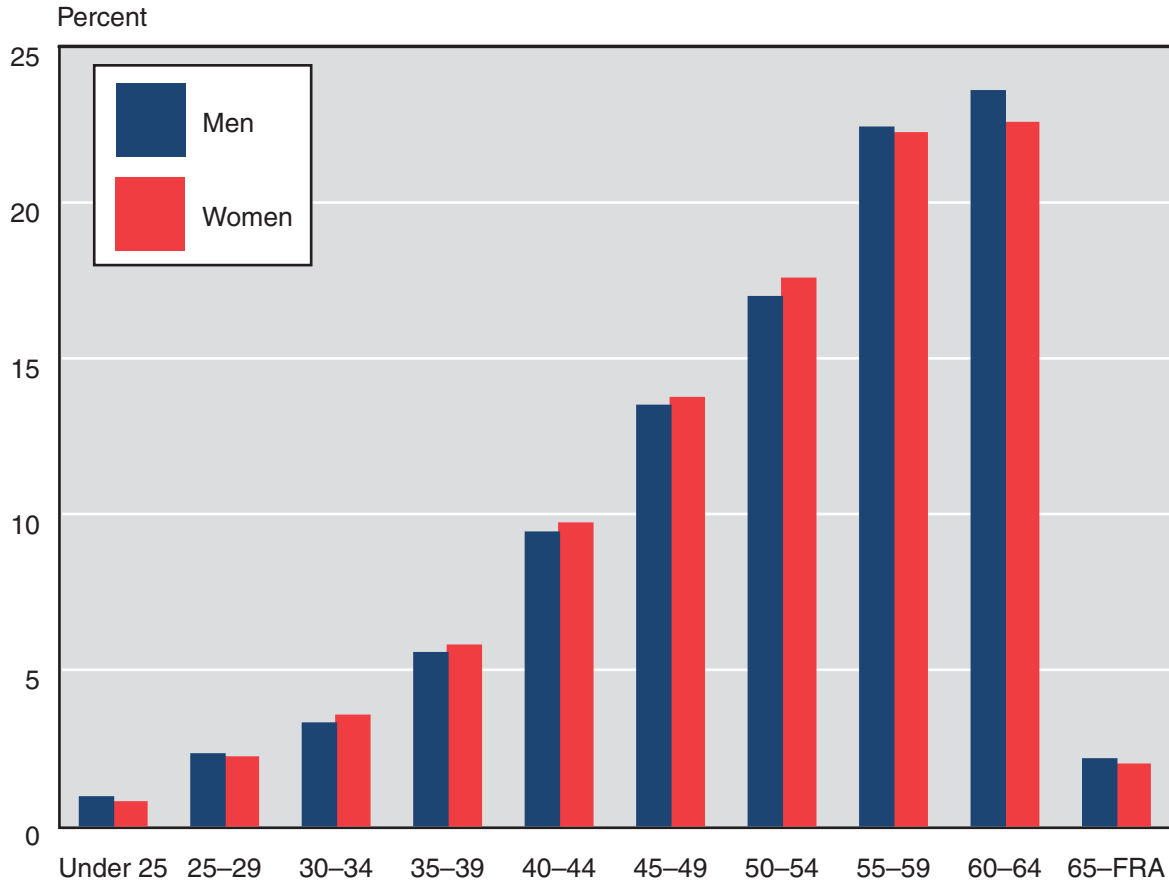
NOTE: The percentage for the District of Columbia is 2.98. In Table 8, that percentage has been rounded to 3.0.

Beneficiaries in Current-Payment Status

Chart 4.

Age of disabled-worker beneficiaries in current-payment status, by sex, December 2005

The percentage of disabled-worker beneficiaries increases with age for both men and women. In December 2005, the largest percentage of disabled-worker beneficiaries was aged 60–64. Disability benefits convert to retirement benefits when the worker reaches full retirement age, 65–67, depending on the year of birth.



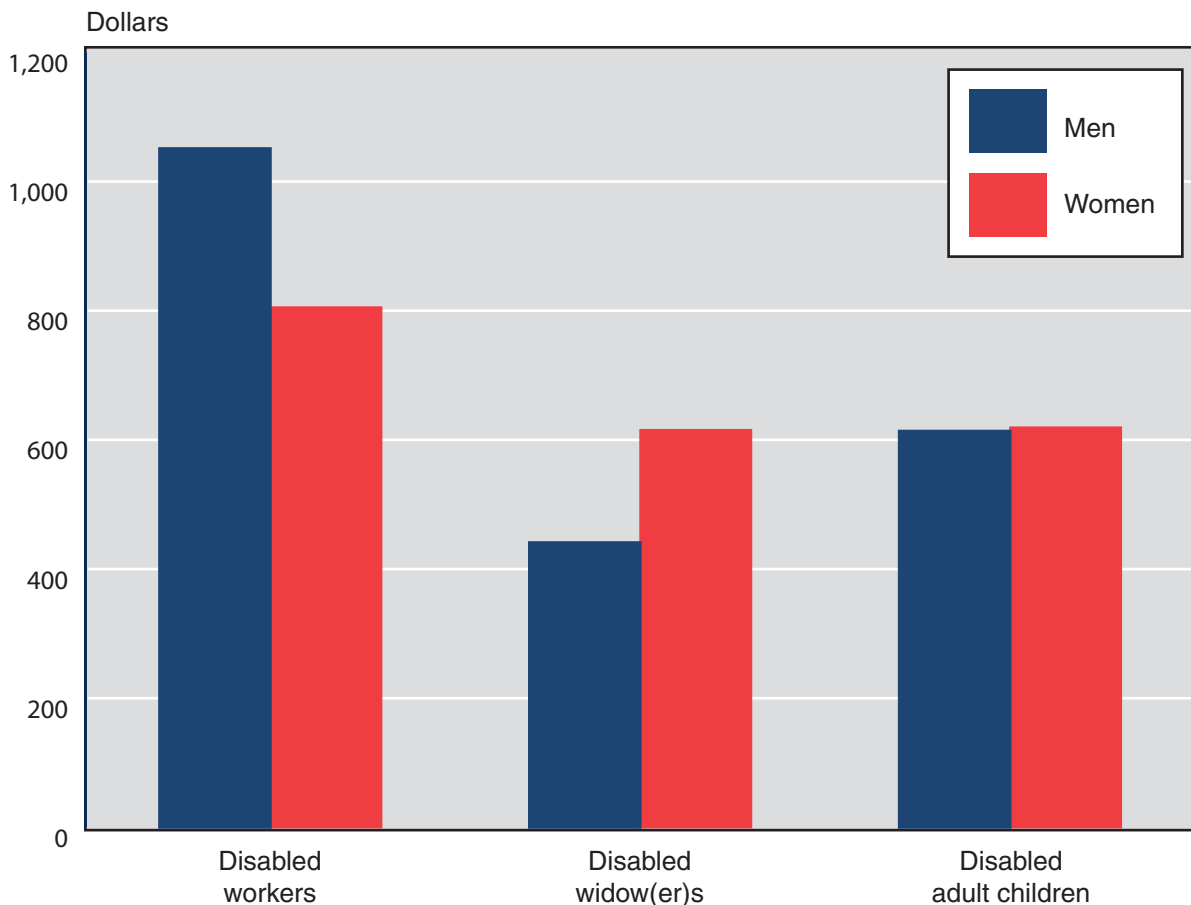
SOURCE: Table 4.

NOTE: FRA = full retirement age.

Chart 5.**Average monthly benefit of disabled beneficiaries in current-payment status, by sex, December 2005**

The average monthly benefit for disabled-worker beneficiaries is higher than that paid to disabled widow(er)s or disabled adult children. The reason for the difference is that disabled workers receive 100 percent of the primary insurance amount (PIA), compared with 71.5 percent for disabled widow(er)s and 50 percent for disabled adult children (if the worker is disabled or retired) or 75 percent (if the worker is deceased).

Because men have traditionally had higher earnings than women, their monthly benefit is higher. This is most obvious in the disabled-worker group. Benefits for disabled widow(er)s and disabled adult children are dependents' benefits, so their monthly benefit is a function of the worker's earnings. Therefore, a disabled widow's average benefit tends to be higher than that of a disabled widower because a male worker's earnings are higher than a female worker's. Benefit amounts are about the same for men and women in the disabled adult children group.



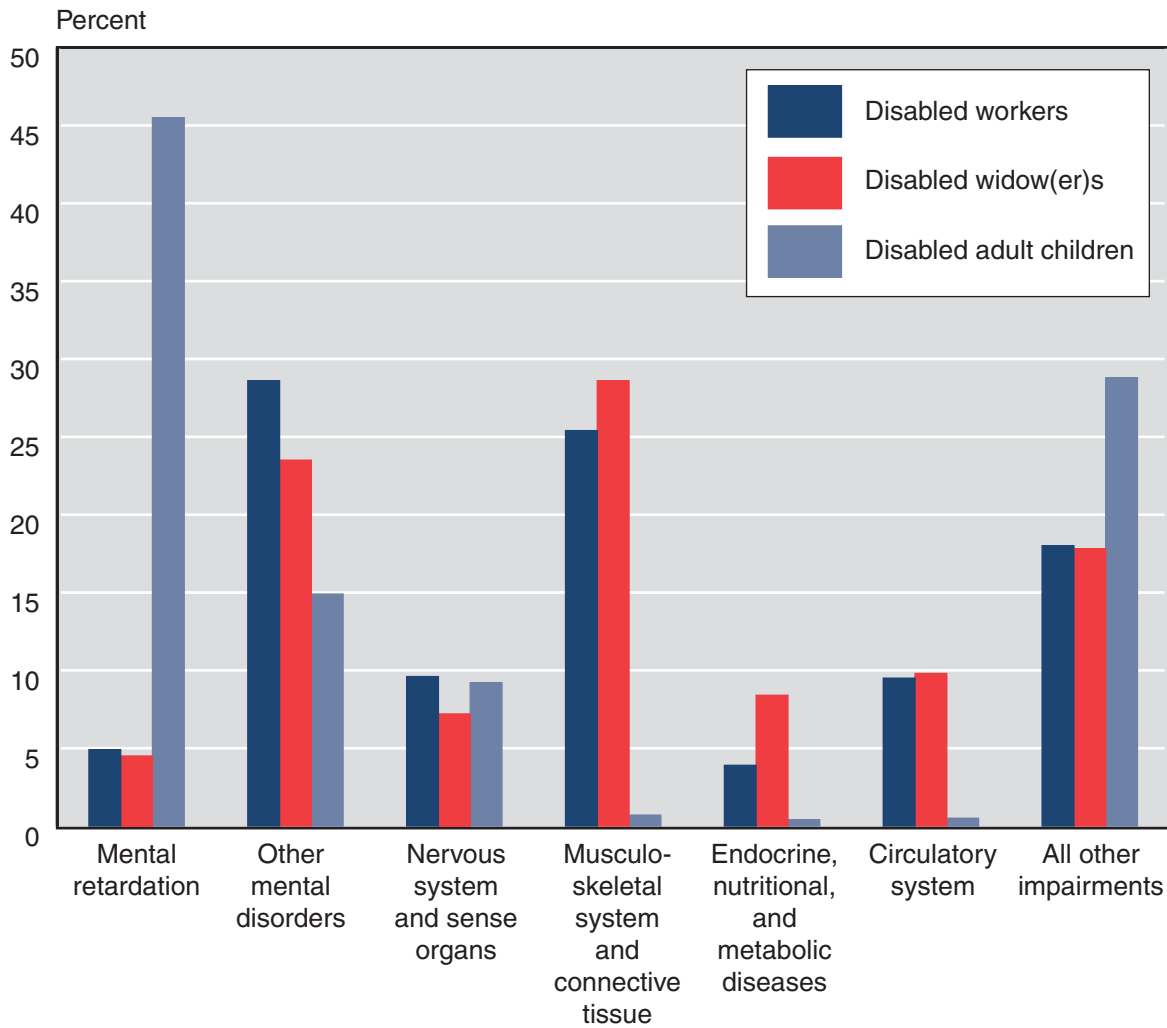
SOURCE: Table 5.

Beneficiaries in Current-Payment Status

Chart 6.

Disabled beneficiaries in current-payment status, by diagnostic group, December 2005

The impairment on which disability is based varies with the type of beneficiary. In December 2005, a mental disorder other than retardation was the primary reason disabled workers received benefits; diseases of the musculoskeletal system and connective tissue were the leading cause of disability among disabled widow(er)s; and mental retardation was the predominant reason for disability among disabled adult children.



SOURCE: Table 6.

Disabled Beneficiaries and Nondisabled Dependents

Table 1.
Number, December 1960–2005, selected years

Year	Total	Workers and nondisabled dependents				Widow(er)s	Adult children of—		
		Workers	Spouses	Children under age 18	Students aged 18–19		Disabled workers	Retired workers	Deceased workers
1960	788,543	455,371	76,599	152,519	2,962	53,825	47,267
1965	1,928,460	988,074	193,362	532,197	16,437	...	8,981	87,122	102,287
1970	2,970,538	1,492,948	283,447	799,111	75,194	49,281	14,295	101,341	154,921
1975	4,799,853	2,488,774	452,922	1,239,058	147,253	109,511	24,193	118,802	219,340
1980	5,223,311	2,858,680	461,878	1,184,846	140,157	127,580	32,883	140,548	276,739
1981	5,008,221	2,776,519	428,212	1,070,000	148,879	121,590	32,664	143,633	286,724
1982	4,532,014	2,603,599	365,862	894,440	79,333	116,372	30,027	144,464	297,917
1983	4,382,745	2,569,029	308,059	855,560	50,134	111,591	30,209	148,464	309,699
1984	4,406,140	2,596,516	303,982	858,243	31,875	109,151	31,165	152,667	322,541
1985	4,507,083	2,656,638	305,532	889,730	22,336	107,005	33,078	157,011	335,753
1986	4,613,249	2,728,463	300,826	911,698	20,245	106,974	34,641	161,755	348,647
1987	4,676,852	2,785,859	290,888	912,367	20,183	106,282	35,378	165,675	360,220
1988	4,709,360	2,821,070	280,780	898,980	24,370	105,810	35,520	170,940	371,890
1989	4,774,160	2,886,590	269,830	901,400	23,330	102,650	35,950	172,650	381,760
1990	4,934,370	3,011,130	264,230	929,720	23,960	101,780	36,990	174,560	392,000
1991	5,209,600	3,198,610	263,780	986,710	26,380	115,010	38,450	177,740	402,920
1992	5,633,130	3,473,330	271,510	1,090,920	25,930	131,620	41,720	181,860	416,240
1993	6,026,460	3,729,330	272,190	1,188,330	29,660	148,070	44,920	185,270	428,690
1994	6,381,470	3,966,590	270,220	1,276,740	29,910	161,650	48,650	187,630	440,080
1995	6,674,450	4,186,720	263,130	1,331,110	29,550	173,240	51,790	188,940	449,970
1996	6,906,420	4,386,040	223,300	1,381,200	32,820	182,020	53,470	190,050	457,520
1997	6,998,210	4,505,760	207,290	1,357,340	31,440	187,220	53,760	190,410	464,990
1998	7,192,370	4,697,010	190,120	1,363,910	30,780	192,400	55,690	189,930	472,530
1999	7,391,920	4,873,560	176,370	1,381,200	37,020	197,520	57,360	189,820	479,070
2000	7,550,930	5,035,840	164,850	1,381,500	35,000	200,130	58,090	191,950	483,570
2001	7,790,038	5,268,039	156,978	1,385,374	38,839	204,255	57,920	191,817	486,816
2002	8,109,332	5,539,597	151,626	1,422,296	43,916	207,365	59,460	192,087	492,985
2003	8,490,007	5,868,541	150,889	1,461,635	46,769	209,360	62,450	191,704	498,659
2004	8,854,343	6,197,385	152,995	1,486,422	47,551	210,736	64,739	191,274	503,241
2005	9,224,458	6,519,001	156,552	1,516,519	47,982	215,866	68,705	191,872	507,961

SOURCES: Social Security Administration. For years before 2001, *Annual Statistical Supplement to the Social Security Bulletin*, based on the Master Beneficiary Record, various sampling rates; beginning with 2001, Disabled Beneficiaries and Dependents Master Beneficiary Record file, 100 percent data.

NOTE: ... = not applicable.

CONTACT: Kevin Kulzer (410) 965-5366 or di.asr@ssa.gov.

Disabled Beneficiaries and Nondisabled Dependents

Table 2.
Average monthly benefit, by basis of entitlement, age, and sex, December 2005

Basis of entitlement and age	Total		Male		Female	
	Number	Average monthly benefit (dollars)	Number	Average monthly benefit (dollars)	Number	Average monthly benefit (dollars)
Workers						
Total	6,519,001	938.00	3,517,269	1,051.20	3,001,732	805.30
Under 25	54,623	504.30	32,009	512.60	22,614	492.50
25-29	146,385	614.60	80,573	625.60	65,812	601.30
30-34	221,138	694.40	115,271	710.00	105,867	677.40
35-39	368,579	762.20	194,960	783.80	173,619	738.00
40-44	622,211	819.20	330,915	857.50	291,296	775.80
45-49	886,513	883.90	474,249	950.40	412,264	807.40
50-54	1,123,773	954.40	596,710	1,058.40	527,063	836.60
55-59	1,455,621	1,020.30	788,317	1,167.10	667,304	846.80
60-64	1,506,574	1,044.80	829,479	1,228.20	677,095	820.10
65-FRA	133,584	1,031.40	74,786	1,218.60	58,798	793.20
Spouses of disabled workers						
Total	156,552	245.30	4,755	197.20	151,797	246.80
Entitlement based on care						
of children	87,895	196.90	1,826	156.70	86,069	197.80
Under 30	5,723	130.20	53	112.10	5,670	130.30
30-34	10,203	139.70	139	129.20	10,064	139.80
35-39	16,823	159.20	259	136.80	16,564	159.50
40-44	20,560	193.70	426	137.80	20,134	194.80
45-49	17,139	223.50	415	160.10	16,724	225.10
50-54	10,244	250.00	290	177.00	9,954	252.10
55-FRA	7,203	289.90	244	206.00	6,959	292.90
Entitlement based on age						
62-64	68,657	307.20	2,929	222.50	65,728	311.00
65 or older	39,764	296.70	742	177.60	39,022	299.00
	28,893	321.60	2,187	237.70	26,706	328.50
Children of disabled workers						
Total	1,633,206	278.90	851,473	280.20	781,733	277.50
Under age 18						
Under 5	1,516,519	270.20	784,079	270.60	732,440	269.90
5-9	118,836	221.70	60,604	221.60	58,232	221.80
10-14	316,835	231.10	161,516	230.30	155,319	231.90
15-17	581,283	260.10	299,825	260.00	281,458	260.10
	499,565	318.50	262,134	318.80	237,431	318.20
Students aged 18-19	47,982	387.10	27,884	389.70	20,098	383.30
Disabled aged 18 or older	68,705	394.80	39,510	394.60	29,195	394.90
Widow(er)s						
Total	215,866	609.30	7,562	441.10	208,304	615.40
50-54	28,134	615.40	1,310	444.30	26,824	623.70
55-59	79,518	614.30	3,270	441.40	76,248	621.70
60-64	105,354	604.10	2,920	440.50	102,434	608.80
65-FRA	2,860	602.20	62	392.40	2,798	606.90

(Continued)

Disabled Beneficiaries and Nondisabled Dependents

Table 2.
Average monthly benefit, by basis of entitlement, age, and sex, December 2005—Continued

Basis of entitlement and age	Total		Male		Female	
	Number	Average monthly benefit (dollars)	Number	Average monthly benefit (dollars)	Number	Average monthly benefit (dollars)
Adult children						
Total	768,538	616.30	420,025	613.70	348,513	619.30
Children of—						
Disabled workers	68,705	394.80	39,510	394.60	29,195	394.90
Retired workers	191,872	528.40	106,405	525.80	85,467	531.70
Deceased workers	507,961	679.40	274,110	679.50	233,851	679.30
Under 25	76,298	519.80	44,592	519.70	31,706	520.10
25–29	63,927	565.90	36,356	567.70	27,571	563.50
30–34	70,624	596.40	39,678	592.20	30,946	601.80
35–39	86,910	622.20	49,040	619.40	37,870	625.90
40–44	110,171	637.60	62,315	635.60	47,856	640.10
45–49	105,595	650.30	58,993	648.50	46,602	652.60
50–54	83,082	659.40	45,205	657.40	37,877	661.90
55–59	61,473	658.30	32,111	654.80	29,362	662.10
60–64	42,254	650.80	21,283	644.40	20,971	657.30
65 or older	68,204	585.30	30,452	583.70	37,752	586.60

SOURCE: Social Security Administration, Disabled Beneficiaries and Dependents Master Beneficiary Record file, 100 percent data.

NOTE: FRA = full retirement age.

CONTACT: Kevin Kulzer (410) 965-5366 or di.asr@ssa.gov.

All Disabled Beneficiaries

Table 3.
Number, average, and total monthly benefits, December 1960–2005

Year	Number				Average monthly benefit (dollars)			Total monthly benefits (thousands of dollars)		
	Total	Workers	Widow(er)s	Adult children	Workers	Widow(er)s	Adult children	Workers	Widow(er)s	Adult children
1960	559,425	455,371	...	104,054	89.31	...	44.15	40,669	...	4,594
1961	742,296	618,075	...	124,221	89.59	...	45.28	55,373	...	5,625
1962	888,131	740,867	...	147,264	89.99	...	45.67	66,671	...	6,726
1963	993,656	827,014	...	166,642	90.59	...	46.45	74,919	...	7,741
1964	1,077,695	894,173	...	183,522	91.12	...	47.35	81,477	...	8,690
1965	1,186,464	988,074	...	198,390	97.76	...	51.77	96,594	...	10,271
1966	1,310,911	1,097,190	...	213,721	98.09	...	52.42	107,623	...	11,203
1967	1,422,778	1,193,120	...	229,658	98.43	...	53.41	117,439	...	12,266
1968	1,560,517	1,295,300	21,563	243,654	111.86	72.25	61.83	144,892	1,558	15,065
1969	1,690,982	1,394,291	39,469	257,222	112.74	71.02	62.79	157,192	2,803	16,151
1970	1,812,786	1,492,948	49,281	270,557	131.26	82.00	73.21	195,964	4,041	19,807
1971	1,990,098	1,647,684	56,743	285,671	146.52	90.11	81.37	241,419	5,113	23,245
1972	2,202,090	1,832,916	64,167	305,007	179.32	109.54	98.81	328,678	7,029	30,138
1973	2,415,383	2,016,626	78,769	319,988	183.00	111.14	100.14	369,043	8,754	32,044
1974	2,670,092	2,236,882	92,128	341,082	205.70	125.87	112.45	460,127	11,596	38,355
1975	2,960,620	2,488,774	109,511	362,335	225.90	137.70	122.80	562,214	15,080	44,495
1976	3,171,198	2,670,208	119,427	381,563	245.17	147.01	132.32	654,655	17,557	50,488
1977	3,368,954	2,837,432	127,276	404,246	265.30	156.11	142.12	752,771	19,869	57,451
1978	3,429,421	2,879,774	129,751	419,896	288.30	165.46	153.66	830,239	21,469	64,521
1979	3,435,761	2,870,590	129,833	435,338	322.00	180.52	171.55	924,330	23,437	74,682
1980	3,436,429	2,858,680	127,580	450,169	370.70	205.02	198.95	1,059,713	26,156	89,561
1981	3,361,130	2,776,519	121,590	463,021	413.20	226.58	224.51	1,147,258	27,550	103,953
1982	3,192,379	2,603,599	116,372	472,408	440.60	242.11	245.07	1,147,146	28,175	115,773
1983	3,168,992	2,569,029	111,591	488,372	456.20	250.33	257.78	1,171,991	27,935	125,893
1984	3,212,040	2,596,516	109,151	506,373	470.70	306.24	270.28	1,222,180	33,426	136,862
1985	3,289,485	2,656,638	107,005	525,842	483.80	315.26	281.92	1,285,281	33,734	148,245
1986	3,380,480	2,728,463	106,974	545,043	487.90	319.74	288.79	1,331,217	34,204	157,403
1987	3,453,414	2,785,859	106,282	561,273	508.20	333.89	304.32	1,415,774	35,486	170,807
1988	3,507,707	2,830,284	103,123	574,300	529.50	348.05	320.21	1,498,635	35,892	183,897
1989	3,583,451	2,895,364	101,630	586,457	556.00	366.72	339.47	1,609,822	37,270	199,085
1990	3,712,763	3,011,294	100,989	600,480	587.20	388.93	361.71	1,768,232	39,278	217,200
1991	3,925,472	3,194,938	114,489	616,045	609.40	406.96	378.86	1,946,995	46,592	233,395
1992	4,236,080	3,467,783	131,324	636,973	626.10	422.65	393.61	2,171,179	55,504	250,719
1993	4,529,466	3,725,966	147,015	656,485	641.70	434.20	407.20	2,390,952	63,834	267,321
1994	4,796,313	3,962,954	160,676	672,683	661.40	446.30	422.40	2,621,098	71,710	284,141

(Continued)

Table 3.
Number, average, and total monthly benefits, December 1960–2005—Continued

Year	Number				Average monthly benefit (dollars)			Total monthly benefits (thousands of dollars)		
	Total	Workers	Widow(er)s	Adult children	Workers	Widow(er)s	Adult children	Workers	Widow(er)s	Adult children
1995	5,044,388	4,185,263	173,024	686,101	681.60	458.30	437.30	2,853,512	79,297	300,032
1996	5,264,321	4,385,623	181,911	696,787	703.90	471.00	454.30	3,087,040	85,680	316,550
1997	5,400,781	4,508,134	187,938	704,709	721.60	480.40	468.60	3,253,069	90,285	330,227
1998	5,605,272	4,698,319	194,181	712,772	733.10	487.30	479.40	3,444,338	94,624	341,703
1999	5,798,776	4,879,455	198,795	720,526	754.10	499.90	495.60	3,679,597	99,378	357,093
2000	5,972,468	5,042,333	201,446	728,689	786.40	519.70	518.30	3,965,291	104,681	377,650
2001	6,208,847	5,268,039	204,255	736,553	814.40	536.70	537.60	4,290,449	109,622	395,956
2002	6,491,494	5,539,597	207,365	744,532	834.30	548.10	550.40	4,621,852	113,653	409,813
2003	6,830,714	5,868,541	209,360	752,813	861.60	563.80	567.00	5,054,332	118,010	426,780
2004	7,167,375	6,197,385	210,736	759,254	894.10	582.70	587.60	5,540,703	122,795	446,096
2005	7,503,405	6,519,001	215,866	768,538	938.00	609.30	616.30	6,113,106	131,508	473,545

SOURCES: Social Security Administration. For years before 2000, *Annual Statistical Supplement to the Social Security Bulletin*, based on the Master Beneficiary Record, various sampling rates; for 2000, Social Security Disability Insurance Beneficiaries, 100 percent data; beginning with 2001, Disabled Beneficiaries and Dependents Master Beneficiary Record file, 100 percent data.

NOTE: . . . = not applicable.

CONTACT: Kevin Kulzer (410) 965-5366 or di.asr@ssa.gov.

All Disabled Beneficiaries

Table 4.
Number and average monthly benefit, by sex and age, December 2005

Age	Total		Workers		Widow(er)s		Adult children	
	Number	Average monthly benefit (dollars)	Number	Average monthly benefit (dollars)	Number	Average monthly benefit (dollars)	Number	Average monthly benefit (dollars)
All disabled beneficiaries								
Total	7,503,405	895.60	6,519,001	938.00	215,866	609.30	768,538	616.30
Under 25	130,921	513.30	54,623	504.30	76,298	519.80
25-29	210,312	599.80	146,385	614.60	63,927	565.90
30-34	291,762	670.70	221,138	694.40	70,624	596.40
35-39	455,489	735.50	368,579	762.20	86,910	622.20
40-44	732,382	791.90	622,211	819.20	110,171	637.60
45-49	992,108	859.00	886,513	883.90	105,595	650.30
50-54	1,234,989	926.80	1,123,773	954.40	28,134	615.40	83,082	659.40
55-59	1,596,612	986.10	1,455,621	1,020.30	79,518	614.30	61,473	658.30
60-64	1,654,182	1,006.70	1,506,574	1,044.80	105,354	604.10	42,254	650.80
65-FRA ^a	204,648	876.70	133,584	1,031.40	2,860	602.20	68,204	585.30
Men								
Subtotal	3,944,856	1,003.50	3,517,269	1,051.20	7,562	441.10	420,025	613.70
Under 25	76,601	516.70	32,009	512.60	44,592	519.70
25-29	116,929	607.60	80,573	625.60	36,356	567.70
30-34	154,949	679.80	115,271	710.00	39,678	592.20
35-39	244,000	750.80	194,960	783.80	49,040	619.40
40-44	393,230	822.30	330,915	857.50	62,315	635.60
45-49	533,242	917.00	474,249	950.40	58,993	648.50
50-54	643,225	1,028.90	596,710	1,058.40	1,310	444.30	45,205	657.40
55-59	823,698	1,144.20	788,317	1,167.10	3,270	441.40	32,111	654.80
60-64	853,682	1,210.90	829,479	1,228.20	2,920	440.50	21,283	644.40
65-FRA ^a	105,300	1,034.50	74,786	1,218.60	62	392.40	30,452	583.70
Women								
Subtotal	3,558,549	776.00	3,001,732	805.30	208,304	615.40	348,513	619.30
Under 25	54,320	508.60	22,614	492.50	31,706	520.10
25-29	93,383	590.10	65,812	601.30	27,571	563.50
30-34	136,813	660.30	105,867	677.40	30,946	601.80
35-39	211,489	717.90	173,619	738.00	37,870	625.90
40-44	339,152	756.60	291,296	775.80	47,856	640.10
45-49	458,866	791.60	412,264	807.40	46,602	652.60
50-54	591,764	815.80	527,063	836.60	26,824	623.70	37,877	661.90
55-59	772,914	817.60	667,304	846.80	76,248	621.70	29,362	662.10
60-64	800,500	788.80	677,095	820.10	102,434	608.80	20,971	657.30
65-FRA ^a	99,348	709.40	58,798	793.20	2,798	606.90	37,752	586.60

SOURCE: Social Security Administration, Disabled Beneficiaries and Dependents Master Beneficiary Record file, 100 percent data.

NOTE: FRA = full retirement age; . . . = not applicable.

a. FRA applies only to workers and widow(er)s. There is no age limit for adult children.

CONTACT: Kevin Kulzer (410) 965-5366 or di.asr@ssa.gov.

Table 5.
Distribution, by sex and monthly benefit, December 2005

Sex and monthly benefit (dollars)	Total		Workers		Widow(er)s		Adult children	
	Number	Percent	Number	Percent	Number	Percent	Number	Percent
All disabled beneficiaries	7,503,405	100.0	6,519,001	100.0	215,866	100.0	768,538	100.0
Less than 300.00	323,403	4.3	199,649	3.1	37,838	17.5	85,916	11.2
300.00–399.90	335,591	4.5	224,701	3.4	21,857	10.1	89,033	11.6
400.00–499.90	406,352	5.4	279,865	4.3	27,209	12.6	99,278	12.9
500.00–599.90	727,890	9.7	600,351	9.2	26,130	12.1	101,409	13.2
600.00–699.90	911,221	12.1	783,511	12.0	23,539	10.9	104,171	13.6
700.00–799.90	851,831	11.4	729,720	11.2	20,404	9.5	101,707	13.2
800.00–899.90	731,745	9.8	645,282	9.9	16,589	7.7	69,874	9.1
900.00–999.90	619,960	8.3	554,215	8.5	13,649	6.3	52,096	6.8
1,000.00–1,099.90	521,205	6.9	471,457	7.2	12,407	5.7	37,341	4.9
1,100.00–1,199.90	420,105	5.6	395,498	6.1	8,278	3.8	16,329	2.1
1,200.00–1,299.90	339,814	4.5	328,760	5.0	4,870	2.3	6,184	0.8
1,300.00–1,399.90	290,181	3.9	285,229	4.4	2,302	1.1	2,650	0.3
1,400.00–1,499.90	287,162	3.8	285,205	4.4	691	0.3	1,266	0.2
1,500.00–1,599.90	226,510	3.0	225,898	3.5	43	a	569	0.1
1,600.00–1,699.90	205,534	2.7	205,282	3.1	17	a	235	a
1,700.00–1,799.90	146,484	2.0	146,311	2.2	10	a	163	a
1,800.00 or more	158,417	2.1	158,067	2.4	33	a	317	a
Average benefit (dollars)	895.60		938.00		609.30		616.30	
Men	3,944,856	100.0	3,517,269	100.0	7,562	100.0	420,025	100.0
Less than 300.00	119,679	3.0	67,760	1.9	2,711	35.9	49,208	11.7
300.00–399.90	127,917	3.2	78,658	2.2	900	11.9	48,359	11.5
400.00–499.90	158,288	4.0	102,853	2.9	1,105	14.6	54,330	12.9
500.00–599.90	282,391	7.2	226,203	6.4	891	11.8	55,297	13.2
600.00–699.90	372,590	9.4	316,048	9.0	637	8.4	55,905	13.3
700.00–799.90	384,583	9.7	329,280	9.4	459	6.1	54,844	13.1
800.00–899.90	359,020	9.1	320,528	9.1	311	4.1	38,181	9.1
900.00–999.90	327,765	8.3	299,182	8.5	190	2.5	28,393	6.8
1,000.00–1,099.90	297,156	7.5	276,734	7.9	165	2.2	20,257	4.8
1,100.00–1,199.90	260,485	6.6	251,359	7.1	101	1.3	9,025	2.1
1,200.00–1,299.90	226,947	5.8	223,526	6.4	62	0.8	3,359	0.8
1,300.00–1,399.90	206,808	5.2	205,283	5.8	22	0.3	1,503	0.4
1,400.00–1,499.90	217,207	5.5	216,530	6.2	b	b	b	b
1,500.00–1,599.90	178,200	4.5	177,885	5.1	0	0	315	0.1
1,600.00–1,699.90	165,538	4.2	165,414	4.7	0	0	124	a
1,700.00–1,799.90	122,317	3.1	122,225	3.5	b	b	b	b
1,800.00 or more	137,965	3.5	137,801	3.9	0	0	164	a
Average benefit (dollars)	1,003.50		1,051.20		441.10		613.70	

(Continued)

All Disabled Beneficiaries

Table 5.
Distribution, by sex and monthly benefit, December 2005—Continued

Sex and monthly benefit (dollars)	Total		Workers		Widow(er)s		Adult children	
	Number	Percent	Number	Percent	Number	Percent	Number	Percent
Women	3,558,549	100.0	3,001,732	100.0	208,304	100.0	348,513	100.0
Less than 300.00	203,724	5.7	131,889	4.4	35,127	16.9	36,708	10.5
300.00–399.90	207,674	5.8	146,043	4.9	20,957	10.1	40,674	11.7
400.00–499.90	248,064	7.0	177,012	5.9	26,104	12.5	44,948	12.9
500.00–599.90	445,499	12.5	374,148	12.5	25,239	12.1	46,112	13.2
600.00–699.90	538,631	15.1	467,463	15.6	22,902	11.0	48,266	13.8
700.00–799.90	467,248	13.1	400,440	13.3	19,945	9.6	46,863	13.4
800.00–899.90	372,725	10.5	324,754	10.8	16,278	7.8	31,693	9.1
900.00–999.90	292,195	8.2	255,033	8.5	13,459	6.5	23,703	6.8
1,000.00–1,099.90	224,049	6.3	194,723	6.5	12,242	5.9	17,084	4.9
1,100.00–1,199.90	159,620	4.5	144,139	4.8	8,177	3.9	7,304	2.1
1,200.00–1,299.90	112,867	3.2	105,234	3.5	4,808	2.3	2,825	0.8
1,300.00–1,399.90	83,373	2.3	79,946	2.7	2,280	1.1	1,147	0.3
1,400.00–1,499.90	69,955	2.0	68,675	2.3	b	b	b	b
1,500.00–1,599.90	48,310	1.4	48,013	1.6	43	a	254	0.1
1,600.00–1,699.90	39,996	1.1	39,868	1.3	17	a	111	a
1,700.00–1,799.90	24,167	0.7	24,086	0.8	b	b	b	b
1,800.00 or more	20,452	0.6	20,266	0.7	33	a	153	a
Average benefit (dollars)	776.00		805.30		615.40		619.30	

SOURCE: Social Security Administration, Disabled Beneficiaries and Dependents Master Beneficiary Record file, 100 percent data.

a. Less than 0.05 percent.

b. Data not shown to avoid disclosure of information for particular individuals.

CONTACT: Kevin Kulzer (410) 965-5366 or di.asr@ssa.gov.

Table 6.
Distribution, by sex and diagnostic group, December 2005

Diagnostic group	Total		Workers		Widow(er)s		Adult children	
	Number	Percent	Number	Percent	Number	Percent	Number	Percent
All disabled beneficiaries								
Total	7,503,405	100.0	6,519,001	100.0	215,866	100.0	768,538	100.0
Congenital anomalies	19,965	0.3	11,001	0.2	273	0.1	8,691	1.1
Endocrine, nutritional, and metabolic diseases	273,771	3.6	252,933	3.9	18,072	8.4	2,766	0.4
Infectious and parasitic diseases	116,867	1.6	111,927	1.7	1,833	0.8	3,107	0.4
Injuries	296,987	4.0	281,828	4.3	5,383	2.5	9,776	1.3
Mental disorders								
Retardation	679,947	9.1	320,564	4.9	9,737	4.5	349,646	45.5
Other	2,028,156	27.0	1,862,618	28.6	50,708	23.5	114,830	14.9
Neoplasms	191,291	2.5	185,049	2.8	4,395	2.0	1,847	0.2
Diseases of the—								
Blood and blood-forming organs	18,592	0.2	16,270	0.2	361	0.2	1,961	0.3
Circulatory system	645,583	8.6	620,852	9.5	21,242	9.8	3,489	0.5
Digestive system	104,059	1.4	100,934	1.5	2,505	1.2	620	0.1
Genitourinary system	112,442	1.5	108,701	1.7	1,899	0.9	1,842	0.2
Musculoskeletal system and connective tissue	1,724,107	23.0	1,656,997	25.4	61,844	28.6	5,266	0.7
Nervous system and sense organs	710,202	9.5	623,948	9.6	15,607	7.2	70,647	9.2
Respiratory system	214,847	2.9	202,821	3.1	11,021	5.1	1,005	0.1
Skin and subcutaneous tissue	16,433	0.2	15,662	0.2	506	0.2	265	a
Other	14,751	0.2	13,225	0.2	262	0.1	1,264	0.2
Unknown	335,405	4.5	133,671	2.1	10,218	4.7	191,516	24.9
Men								
Subtotal	3,944,856	100.0	3,517,269	100.0	7,562	100.0	420,025	100.0
Congenital anomalies	10,199	0.3	5,681	0.2	9	0.1	4,509	1.1
Endocrine, nutritional, and metabolic diseases	111,483	2.8	109,819	3.1	364	4.8	1,300	0.3
Infectious and parasitic diseases	84,334	2.1	82,587	2.3	98	1.3	1,649	0.4
Injuries	203,352	5.2	196,216	5.6	356	4.7	6,780	1.6
Mental disorders								
Retardation	395,497	10.0	206,274	5.9	358	4.7	188,865	45.0
Other	1,017,985	25.8	943,764	26.8	1,543	20.4	72,678	17.3
Neoplasms	90,262	2.3	89,067	2.5	153	2.0	1,042	0.2
Diseases of the—								
Blood and blood-forming organs	8,288	0.2	7,285	0.2	17	0.2	986	0.2
Circulatory system	419,349	10.6	416,306	11.8	1,171	15.5	1,872	0.4
Digestive system	55,220	1.4	54,760	1.6	139	1.8	321	0.1
Genitourinary system	66,316	1.7	65,229	1.9	123	1.6	964	0.2
Musculoskeletal system and connective tissue	852,925	21.6	848,703	24.1	1,957	25.9	2,265	0.5
Nervous system and sense organs	348,977	8.8	310,759	8.8	523	6.9	37,695	9.0
Respiratory system	101,521	2.6	100,722	2.9	343	4.5	456	0.1
Skin and subcutaneous tissue	6,609	0.2	6,488	0.2	16	0.2	105	a
Other	6,910	0.2	6,213	0.2	9	0.1	688	0.2
Unknown	165,629	4.2	67,396	1.9	383	5.1	97,850	23.3

(Continued)

All Disabled Beneficiaries

Table 6.
Distribution, by sex and diagnostic group, December 2005—Continued

Diagnostic group	Total		Workers		Widow(er)s		Adult children	
	Number	Percent	Number	Percent	Number	Percent	Number	Percent
Women								
Subtotal	3,558,549	100.0	3,001,732	100.0	208,304	100.0	348,513	100.0
Congenital anomalies	9,766	0.3	5,320	0.2	264	0.1	4,182	1.2
Endocrine, nutritional, and metabolic diseases	162,288	4.6	143,114	4.8	17,708	8.5	1,466	0.4
Infectious and parasitic diseases	32,533	0.9	29,340	1.0	1,735	0.8	1,458	0.4
Injuries	93,635	2.6	85,612	2.9	5,027	2.4	2,996	0.9
Mental disorders								
Retardation	284,450	8.0	114,290	3.8	9,379	4.5	160,781	46.1
Other	1,010,171	28.4	918,854	30.6	49,165	23.6	42,152	12.1
Neoplasms	101,029	2.8	95,982	3.2	4,242	2.0	805	0.2
Diseases of the—								
Blood and blood-forming organs	10,304	0.3	8,985	0.3	344	0.2	975	0.3
Circulatory system	226,234	6.4	204,546	6.8	20,071	9.6	1,617	0.5
Digestive system	48,839	1.4	46,174	1.5	2,366	1.1	299	0.1
Genitourinary system	46,126	1.3	43,472	1.4	1,776	0.9	878	0.3
Musculoskeletal system and connective tissue	871,182	24.5	808,294	26.9	59,887	28.7	3,001	0.9
Nervous system and sense organs	361,225	10.2	313,189	10.4	15,084	7.2	32,952	9.5
Respiratory system	113,326	3.2	102,099	3.4	10,678	5.1	549	0.2
Skin and subcutaneous tissue	9,824	0.3	9,174	0.3	490	0.2	160	a
Other	7,841	0.2	7,012	0.2	253	0.1	576	0.2
Unknown	169,776	4.8	66,275	2.2	9,835	4.7	93,666	26.9

SOURCE: Social Security Administration, Disabled Beneficiaries and Dependents Master Beneficiary Record file, 100 percent data.

NOTE: The diagnosis for disabled adult children typically was not recorded on the Master Beneficiary Record until 1984. Many beneficiaries entitled before that date are still on the rolls today.

a. Less than 0.05 percent.

CONTACT: Kevin Kulzer (410) 965-5366 or di.asr@ssa.gov.

Table 7.
Average monthly benefit, by sex and diagnostic group, December 2005 (in dollars)

Diagnostic group	Total	Workers	Widow(er)s	Adult children
<i>All disabled beneficiaries</i>				
Total	895.60	938.00	609.30	616.30
Congenital anomalies	737.10	811.50	617.90	646.70
Endocrine, nutritional, and metabolic diseases	874.90	898.10	591.50	606.00
Infectious and parasitic diseases	912.00	926.40	598.20	579.60
Injuries	951.60	969.20	591.90	642.70
Mental disorders				
Retardation	619.00	634.50	548.20	606.70
Other	838.60	858.10	625.40	616.60
Neoplasms	1,075.30	1,090.40	623.50	634.60
Diseases of the—				
Blood and blood-forming organs	843.00	880.90	608.10	571.70
Circulatory system	1,055.60	1,073.20	608.70	634.30
Digestive system	980.20	991.40	624.40	602.20
Genitourinary system	973.90	986.80	610.00	587.50
Musculoskeletal system and connective tissue	982.90	998.10	609.90	604.70
Nervous system and sense organs	930.60	972.10	613.30	633.90
Respiratory system	966.40	986.70	627.30	579.90
Skin and subcutaneous tissue	897.60	912.30	607.70	581.10
Other	975.90	1,019.80	633.60	588.20
Unknown	739.50	913.30	591.90	626.10
<i>Men</i>				
Subtotal	1,003.50	1,051.20	441.10	613.70
Congenital anomalies	774.20	875.30	366.80	647.60
Endocrine, nutritional, and metabolic diseases	1,079.20	1,086.90	458.60	602.80
Infectious and parasitic diseases	960.30	968.70	464.80	569.30
Injuries	1,022.90	1,037.20	426.70	642.70
Mental disorders				
Retardation	637.50	670.00	374.90	602.50
Other	906.70	929.70	450.00	617.30
Neoplasms	1,254.70	1,263.40	448.30	631.50
Diseases of the—				
Blood and blood-forming organs	934.40	984.90	357.40	571.30
Circulatory system	1,194.40	1,199.00	467.70	626.40
Digestive system	1,117.00	1,121.70	450.60	592.60
Genitourinary system	1,074.50	1,083.00	468.90	578.50
Musculoskeletal system and connective tissue	1,157.20	1,160.30	435.30	599.60
Nervous system and sense organs	1,035.80	1,086.40	415.90	627.20
Respiratory system	1,172.50	1,177.60	455.30	572.10
Skin and subcutaneous tissue	1,033.90	1,042.70	404.60	587.20
Other	1,058.60	1,112.20	397.60	583.30
Unknown	783.20	1,013.30	421.30	626.20

(Continued)

All Disabled Beneficiaries

Table 7.
Average monthly benefit, by sex and diagnostic group, December 2005 (in dollars)—Continued

Diagnostic group	Total	Workers	Widow(er)s	Adult children
		<i>Women</i>		
Subtotal	776.00	805.30	615.40	619.30
Congenital anomalies	698.40	743.40	626.50	645.70
Endocrine, nutritional, and metabolic diseases	734.50	753.20	594.20	608.80
Infectious and parasitic diseases	786.80	807.30	605.70	591.20
Injuries	796.60	813.40	603.60	642.80
Mental disorders				
Retardation	593.20	570.40	554.80	611.60
Other	770.00	784.60	630.90	615.40
Neoplasms	914.90	929.80	629.90	638.70
Diseases of the—				
Blood and blood-forming organs	769.60	796.70	620.50	572.20
Circulatory system	798.20	817.20	617.00	643.40
Digestive system	825.60	836.70	634.70	612.60
Genitourinary system	829.30	842.60	619.70	597.40
Musculoskeletal system and connective tissue	812.40	827.70	615.60	608.60
Nervous system and sense organs	829.00	858.80	620.10	641.50
Respiratory system	781.80	798.40	632.80	586.40
Skin and subcutaneous tissue	805.90	820.10	614.30	577.00
Other	903.10	937.90	642.00	594.20
Unknown	696.90	811.70	598.50	626.00

SOURCE: Social Security Administration, Disabled Beneficiaries and Dependents Master Beneficiary Record file, 100 percent data.

NOTE: The diagnosis for disabled adult children typically was not recorded on the Master Beneficiary Record until 1984. Many beneficiaries entitled before that date are still on the rolls today.

CONTACT: Kevin Kulzer (410) 965-5366 or di.asr@ssa.gov.

Table 8.
Number aged 18–64 as a percentage of the resident population aged 18–64, by state,
December 2005

State	Resident population ^a	Beneficiaries	
		Number	Percentage of resident population
United States	186,150,307	7,116,707	3.8
Alabama	2,864,322	189,417	6.6
Alaska	431,311	10,440	2.4
Arizona	3,600,675	131,514	3.7
Arkansas	1,719,082	114,579	6.7
California	22,561,711	614,490	2.7
Colorado	3,019,556	78,294	2.6
Connecticut	2,201,141	73,484	3.3
Delaware	535,431	22,570	4.2
District of Columbia	370,476	11,046	3.0
Florida	10,728,827	431,525	4.0
Georgia	5,839,432	218,445	3.7
Hawaii	800,804	20,733	2.6
Idaho	890,999	31,979	3.6
Illinois	7,992,258	254,126	3.2
Indiana	3,891,620	159,596	4.1
Iowa	1,860,313	67,547	3.6
Kansas	1,713,397	59,489	3.5
Kentucky	2,667,481	179,035	6.7
Louisiana	2,844,396	128,227	4.5
Maine	851,505	50,689	6.0
Maryland	3,552,867	101,227	2.8
Massachusetts	4,087,881	169,154	4.1
Michigan	6,338,092	273,143	4.3
Minnesota	3,279,980	100,246	3.1
Mississippi	1,814,151	120,384	6.6
Missouri	3,648,907	178,416	4.9
Montana	601,842	22,642	3.8
Nebraska	1,093,608	36,731	3.4
Nevada	1,520,491	47,799	3.1
New Hampshire	843,684	35,786	4.2
New Jersey	5,426,768	172,605	3.2
New Mexico	1,204,000	49,741	4.1
New York	12,193,682	458,253	3.8
North Carolina	5,488,103	274,526	5.0
North Dakota	406,509	12,736	3.1
Ohio	7,175,500	278,233	3.9
Oklahoma	2,225,580	100,876	4.5
Oregon	2,321,206	82,582	3.6
Pennsylvania	7,720,030	331,884	4.3
Rhode Island	681,060	31,835	4.7

(Continued)

All Disabled Beneficiaries

Table 8.
Number aged 18–64 as a percentage of the resident population aged 18–64, by state,
December 2005—Continued

State	Resident population ^a	Beneficiaries	
		Number	Percentage of resident population
South Carolina	2,692,901	145,636	5.4
South Dakota	477,133	16,280	3.4
Tennessee	3,822,486	202,894	5.3
Texas	14,261,838	429,367	3.0
Utah	1,511,008	33,124	2.2
Vermont	408,449	17,700	4.3
Virginia	4,877,794	184,083	3.8
Washington	4,082,520	135,217	3.3
West Virginia	1,155,991	90,671	7.8
Wisconsin	3,518,573	125,251	3.6
Wyoming	332,936	10,460	3.1

SOURCES: Social Security Administration, Disabled Beneficiaries and Dependents Master Beneficiary Record file, 100 percent data; U.S. Census Bureau, 2005 estimates of resident population.

NOTE: Data exclude United States territories and other areas.

a. Population estimates for the United States as of July 1, 2005, as reported by the U.S. Census Bureau.

CONTACT: Kevin Kulzer (410) 965-5366 or di.asr@ssa.gov.

Table 9.
Distribution, by state or other area, December 2005

State or area	Total		Workers		Widow(er)s		Adult children	
	Number	Percent	Number	Percent	Number	Percent	Number	Percent
All areas	7,503,405	100.0	6,519,001	100.0	215,866	100.0	768,538	100.0
Alabama	193,985	2.6	169,574	2.6	6,969	3.2	17,442	2.3
Alaska	10,644	0.1	9,640	0.1	233	0.1	771	0.1
Arizona	134,584	1.8	122,207	1.9	3,181	1.5	9,196	1.2
Arkansas	117,523	1.6	104,081	1.6	4,086	1.9	9,356	1.2
California	630,032	8.4	551,529	8.5	14,379	6.7	64,124	8.3
Colorado	80,206	1.1	72,439	1.1	1,794	0.8	5,973	0.8
Connecticut	75,811	1.0	64,751	1.0	1,563	0.7	9,497	1.2
Delaware	23,121	0.3	20,676	0.3	517	0.2	1,928	0.3
District of Columbia	11,327	0.2	9,752	0.1	241	0.1	1,334	0.2
Florida	442,961	5.9	396,342	6.1	11,863	5.5	34,756	4.5
Georgia	224,316	3.0	196,010	3.0	7,582	3.5	20,724	2.7
Hawaii	21,398	0.3	18,522	0.3	505	0.2	2,371	0.3
Idaho	32,849	0.4	29,315	0.4	822	0.4	2,712	0.4
Illinois	261,607	3.5	221,848	3.4	7,440	3.4	32,319	4.2
Indiana	164,140	2.2	141,879	2.2	4,912	2.3	17,349	2.3
Iowa	69,800	0.9	59,475	0.9	1,698	0.8	8,627	1.1
Kansas	61,247	0.8	53,485	0.8	1,555	0.7	6,207	0.8
Kentucky	183,753	2.4	160,126	2.5	7,084	3.3	16,543	2.2
Louisiana	131,762	1.8	108,904	1.7	5,543	2.6	17,315	2.3
Maine	51,940	0.7	46,143	0.7	1,194	0.6	4,603	0.6
Maryland	103,958	1.4	90,603	1.4	2,420	1.1	10,935	1.4
Massachusetts	173,729	2.3	152,111	2.3	3,403	1.6	18,215	2.4
Michigan	280,842	3.7	239,212	3.7	8,131	3.8	33,499	4.4
Minnesota	103,264	1.4	89,819	1.4	1,807	0.8	11,638	1.5
Mississippi	123,361	1.6	106,630	1.6	4,714	2.2	12,017	1.6
Missouri	183,333	2.4	161,227	2.5	5,654	2.6	16,452	2.1
Montana	23,330	0.3	20,527	0.3	605	0.3	2,198	0.3
Nebraska	37,926	0.5	32,812	0.5	854	0.4	4,260	0.6
Nevada	49,047	0.7	45,182	0.7	1,211	0.6	2,654	0.3
New Hampshire	36,671	0.5	32,998	0.5	760	0.4	2,913	0.4
New Jersey	177,954	2.4	153,611	2.4	4,208	1.9	20,135	2.6
New Mexico	50,955	0.7	45,256	0.7	1,273	0.6	4,426	0.6
New York	472,955	6.3	403,614	6.2	12,188	5.6	57,153	7.4
North Carolina	282,420	3.8	249,640	3.8	8,757	4.1	24,023	3.1
North Dakota	13,283	0.2	10,994	0.2	298	0.1	1,991	0.3
Ohio	286,617	3.8	241,960	3.7	9,344	4.3	35,313	4.6
Oklahoma	103,768	1.4	90,867	1.4	3,471	1.6	9,430	1.2
Oregon	84,901	1.1	75,363	1.2	2,116	1.0	7,422	1.0
Pennsylvania	342,384	4.6	292,767	4.5	10,033	4.6	39,584	5.2
Rhode Island	32,735	0.4	28,843	0.4	718	0.3	3,174	0.4

(Continued)

All Disabled Beneficiaries

Table 9.
Distribution, by state or other area, December 2005—Continued

State or area	Total		Workers		Widow(er)s		Adult children	
	Number	Percent	Number	Percent	Number	Percent	Number	Percent
South Carolina	149,642	2.0	130,973	2.0	5,169	2.4	13,500	1.8
South Dakota	16,911	0.2	14,421	0.2	389	0.2	2,101	0.3
Tennessee	208,370	2.8	181,756	2.8	7,696	3.6	18,918	2.5
Texas	440,636	5.9	383,330	5.9	14,475	6.7	42,831	5.6
Utah	33,978	0.5	29,737	0.5	743	0.3	3,498	0.5
Vermont	18,205	0.2	15,845	0.2	439	0.2	1,921	0.2
Virginia	189,193	2.5	165,829	2.5	5,782	2.7	17,582	2.3
Washington	138,546	1.8	123,137	1.9	3,208	1.5	12,201	1.6
West Virginia	93,309	1.2	79,483	1.2	3,792	1.8	10,034	1.3
Wisconsin	129,146	1.7	110,319	1.7	2,748	1.3	16,079	2.1
Wyoming	10,740	0.1	9,606	0.1	235	0.1	899	0.1
Outlying areas								
American Samoa	1,232	a	1,085	a	53	a	94	a
Guam	1,305	a	1,140	a	32	a	133	a
Northern Mariana Islands	234	a	184	a	6	a	44	a
Puerto Rico	165,134	2.2	137,256	2.1	5,142	2.4	22,736	3.0
Virgin Islands	1,979	a	1,602	a	64	a	313	a
Foreign countries	18,406	0.2	12,564	0.2	767	0.4	5,075	0.7

SOURCE: Social Security Administration, Disabled Beneficiaries and Dependents Master Beneficiary Record file, 100 percent data.

a. Less than 0.05 percent.

CONTACT: Kevin Kulzer (410) 965-5366 or di.asr@ssa.gov.

Table 10.
Number, by state or other area and diagnostic group, December 2005

State or area	Total	Congenital anomalies	Endocrine, nutritional, and metabolic diseases	Infectious and parasitic diseases	Injuries	Mental disorders			Neoplasms
						Total	Retardation	Other	
All areas	7,503,405	19,965	273,771	116,867	296,987	2,708,103	679,947	2,028,156	191,291
Alabama	193,985	380	8,277	1,985	8,693	58,626	16,290	42,336	4,427
Alaska	10,644	27	306	126	508	3,899	836	3,063	307
Arizona	134,584	328	4,429	1,908	5,759	53,660	7,871	45,789	3,014
Arkansas	117,523	301	4,804	1,245	5,308	32,098	10,874	21,224	3,071
California	630,032	1,738	19,601	15,181	26,076	243,008	42,589	200,419	16,317
Colorado	80,206	316	2,463	1,300	3,885	26,455	6,182	20,273	2,170
Connecticut	75,811	206	2,389	1,194	2,265	32,996	7,886	25,110	2,002
Delaware	23,121	63	871	447	909	7,645	1,981	5,664	638
District of Columbia	11,327	14	361	711	273	4,837	1,324	3,513	198
Florida	442,961	1,255	16,885	12,209	21,748	146,486	28,430	118,056	12,762
Georgia	224,316	507	9,790	4,913	8,817	71,281	20,990	50,291	5,989
Hawaii	21,398	42	594	399	816	9,439	1,733	7,706	593
Idaho	32,849	100	1,084	267	1,542	12,371	2,680	9,691	859
Illinois	261,607	626	10,463	3,781	9,106	106,498	28,774	77,724	7,079
Indiana	164,140	366	7,566	1,759	5,574	60,813	18,683	42,130	4,391
Iowa	69,800	239	2,721	520	2,631	27,418	9,491	17,927	1,875
Kansas	61,247	180	2,719	604	2,753	22,360	6,992	15,368	1,606
Kentucky	183,753	384	6,265	1,443	6,381	66,072	16,970	49,102	3,784
Louisiana	131,762	295	4,905	1,910	5,610	38,073	15,476	22,597	3,116
Maine	51,940	155	1,534	369	1,886	22,066	4,352	17,714	1,093
Maryland	103,958	371	3,700	2,590	4,077	36,038	9,837	26,201	3,263
Massachusetts	173,729	563	4,236	2,817	5,758	82,260	13,791	68,469	4,117
Michigan	280,842	721	10,439	2,440	9,667	111,311	26,779	84,532	6,933
Minnesota	103,264	285	2,652	992	4,081	48,815	12,352	36,463	2,742
Mississippi	123,361	208	5,739	1,446	5,047	41,994	11,926	30,068	2,999
Missouri	183,333	550	8,166	2,226	8,068	59,885	17,744	42,141	4,436
Montana	23,330	77	663	180	1,238	7,964	2,072	5,892	550
Nebraska	37,926	125	1,465	387	1,727	12,893	4,145	8,748	1,011
Nevada	49,047	154	1,735	828	2,254	15,067	2,306	12,761	1,204
New Hampshire	36,671	98	871	262	1,321	16,696	2,645	14,051	846
New Jersey	177,954	465	5,309	3,213	6,460	63,954	14,539	49,415	5,484
New Mexico	50,955	161	1,768	606	2,622	17,935	3,800	14,135	1,057
New York	472,955	1,239	14,105	10,735	16,886	153,982	41,110	112,872	12,703
North Carolina	282,420	660	13,025	4,356	10,307	90,523	29,006	61,517	7,596
North Dakota	13,283	66	340	79	590	5,259	2,009	3,250	348
Ohio	286,617	885	10,530	2,605	8,647	127,716	35,024	92,692	6,660
Oklahoma	103,768	242	4,399	1,149	4,199	33,592	10,056	23,536	2,528
Oregon	84,901	249	2,792	1,086	4,140	29,981	7,005	22,976	2,310
Pennsylvania	342,384	1,045	12,793	4,198	14,231	116,302	34,497	81,805	9,123
Rhode Island	32,735	58	979	380	981	14,923	3,218	11,705	760

(Continued)

All Disabled Beneficiaries

Table 10.
Number, by state or other area and diagnostic group, December 2005—Continued

State or area	Diseases of the—								Other	Unknown
	Blood and blood-forming organs	Circulatory system	Digestive system	Genitourinary system	Musculoskeletal system and connective tissue	Nervous system and sense organs	Respiratory system	Skin and subcutaneous tissue		
All areas	18,592	645,583	104,059	112,442	1,724,107	710,202	214,847	16,433	14,751	335,405
Alabama	655	20,286	2,517	2,858	53,770	16,424	6,178	495	398	8,016
Alaska	22	708	176	124	2,688	1,152	278	25	32	266
Arizona	226	9,444	2,091	1,921	30,645	13,091	3,514	270	387	3,897
Arkansas	306	12,969	1,731	1,338	35,146	10,782	4,283	394	174	3,573
California	1,275	43,540	9,816	11,291	146,917	61,490	10,991	1,209	1,515	20,067
Colorado	136	4,578	1,277	1,057	19,967	10,691	2,658	164	189	2,900
Connecticut	161	5,287	956	986	13,582	7,269	1,802	182	127	4,407
Delaware	79	1,967	330	412	5,993	2,133	665	36	64	869
District of Columbia	51	832	83	407	1,624	1,120	229	40	18	529
Florida	1,361	42,331	7,790	6,771	98,864	37,900	13,125	1,725	924	20,825
Georgia	894	23,658	3,216	4,566	51,342	19,110	7,527	542	361	11,803
Hawaii	29	1,971	205	567	3,592	1,804	414	47	63	823
Idaho	31	2,149	451	330	7,996	3,639	917	71	62	980
Illinois	765	22,700	3,178	4,414	46,687	26,532	7,528	482	514	11,254
Indiana	418	15,193	2,499	2,262	31,783	17,000	6,251	290	318	7,657
Iowa	151	4,785	808	819	14,512	7,450	2,234	136	126	3,375
Kansas	143	4,680	924	820	13,065	6,607	2,046	110	122	2,508
Kentucky	304	16,738	2,237	1,663	48,498	13,460	6,974	344	333	8,873
Louisiana	473	14,844	1,661	2,278	35,358	11,358	3,359	366	271	7,885
Maine	61	3,576	623	347	12,512	4,386	1,335	160	93	1,744
Maryland	427	10,133	1,454	2,493	19,625	11,189	2,977	238	187	5,196
Massachusetts	303	10,085	2,329	1,561	32,720	15,775	3,818	247	361	6,779
Michigan	668	23,556	3,271	4,005	59,601	26,762	7,909	618	457	12,484
Minnesota	202	6,521	1,141	1,143	17,225	11,155	2,105	154	180	3,871
Mississippi	424	14,523	1,311	2,148	26,315	10,201	3,642	328	251	6,785
Missouri	446	16,083	2,909	2,332	46,457	17,535	6,569	390	321	6,960
Montana	32	1,408	314	245	6,035	2,803	773	45	58	945
Nebraska	69	3,036	491	551	8,784	4,371	1,264	58	57	1,637
Nevada	120	4,560	941	712	12,959	5,015	1,745	122	130	1,501
New Hampshire	45	2,424	469	276	7,427	3,622	1,055	50	74	1,135
New Jersey	523	16,601	2,771	3,059	37,672	18,788	4,725	389	464	8,077
New Mexico	95	2,983	848	791	13,652	5,181	1,408	139	135	1,574
New York	1,266	38,369	5,815	6,609	129,388	42,426	12,399	862	662	25,509
North Carolina	822	29,842	4,048	4,906	66,723	23,706	9,764	671	554	14,917
North Dakota	15	1,012	156	168	2,712	1,529	378	23	20	588
Ohio	609	22,772	2,968	3,930	46,587	25,255	8,980	442	361	17,670
Oklahoma	191	10,060	1,525	1,352	27,446	10,023	3,840	247	158	2,817
Oregon	160	5,621	1,452	932	20,630	10,475	2,301	174	161	2,437
Pennsylvania	782	30,945	5,275	4,543	81,662	33,623	9,733	574	985	16,570
Rhode Island	67	2,249	456	287	6,361	2,793	821	83	92	1,445

(Continued)

Table 10.
Number, by state or other area and diagnostic group, December 2005—Continued

State or area	Total	Congenital anomalies	Endocrine, nutritional, and metabolic diseases	Infectious and parasitic diseases	Injuries	Mental disorders			Neoplasms
						Total	Retardation	Other	
South Carolina	149,642	291	5,683	2,035	6,096	49,602	13,480	36,122	3,768
South Dakota	16,911	77	459	158	612	6,289	2,103	4,186	369
Tennessee	208,370	468	7,976	2,171	7,024	74,975	19,050	55,925	5,031
Texas	440,636	1,011	20,519	8,904	19,224	134,945	34,826	100,119	12,192
Utah	33,978	166	1,161	310	1,322	13,743	3,656	10,087	759
Vermont	18,205	80	601	180	752	7,556	1,614	5,942	436
Virginia	189,193	509	7,275	2,608	7,033	62,569	19,314	43,255	5,287
Washington	138,546	404	4,564	1,915	5,369	56,779	10,961	45,818	3,815
West Virginia	93,309	218	4,112	583	4,442	28,853	10,481	18,372	1,950
Wisconsin	129,146	557	4,484	1,209	4,916	51,562	14,426	37,136	3,200
Wyoming	10,740	42	298	101	573	3,717	1,062	2,655	249
Outlying areas									
American Samoa	1,232	a	162	a	43	130	49	81	24
Guam	1,305	a	24	11	59	360	127	233	36
Northern Mariana Islands	234	0	7	a	16	63	25	38	9
Puerto Rico	165,134	277	2,449	1,560	5,756	76,625	12,332	64,293	1,780
Virgin Islands	1,979	a	36	29	98	587	195	392	42
Foreign countries	18,406	111	228	237	811	6,557	1,981	4,576	383

(Continued)

All Disabled Beneficiaries

Table 10.
Number, by state or other area and diagnostic group, December 2005—Continued

State or area	Diseases of the—								Other	Unknown
	Blood and blood-forming organs	Circulatory system	Digestive system	Genito-urinary system	Musculo-skeletal system and connective tissue	Nervous system and sense organs	Respiratory system	Skin and subcutaneous tissue		
South Carolina	618	16,583	1,993	2,780	35,837	12,600	5,291	376	294	5,795
South Dakota	26	1,245	188	179	3,763	2,312	543	34	30	627
Tennessee	442	20,026	2,693	2,970	48,243	16,581	7,450	473	351	11,496
Texas	1,105	42,811	6,901	9,486	106,241	46,694	11,479	875	833	17,416
Utah	52	1,931	490	450	6,850	4,291	949	65	85	1,354
Vermont	37	1,137	235	124	3,877	1,668	518	41	47	916
Virginia	585	18,031	2,607	3,463	46,931	16,964	6,062	402	399	8,468
Washington	288	8,656	2,363	1,676	29,512	14,450	3,515	292	266	4,682
West Virginia	146	9,143	1,148	687	24,758	6,779	3,655	198	166	6,471
Wisconsin	291	8,988	1,639	1,672	25,631	14,773	3,061	218	232	6,713
Wyoming	16	741	162	126	2,611	1,349	446	18	34	257
Outlying areas										
American Samoa	a	125	10	23	471	130	41	26	12	24
Guam	a	192	17	66	280	171	35	a	18	24
Northern Mariana Islands	a	39	0	13	21	36	5	11	a	6
Puerto Rico	138	9,148	944	1,276	40,390	13,610	3,041	412	191	7,537
Virgin Islands	15	229	17	47	519	259	23	a	a	64
Foreign countries	18	1,539	139	130	3,650	1,910	219	39	28	2,407

SOURCE: Social Security Administration, Disabled Beneficiaries and Dependents Master Beneficiary Record file, 100 percent data.

NOTE: The diagnosis for disabled adult children typically was not recorded on the Master Beneficiary Record until 1984. Many beneficiaries entitled before that date are still on the rolls today.

a. Data not shown to avoid disclosure of information for particular individuals.

CONTACT: Kevin Kulzer (410) 965-5366 or di.asr@ssa.gov.

Table 11.
Percentage distribution, by state or other area and diagnostic group, December 2005

State or area	Total		Congenital anomalies	Endocrine, nutritional, and metabolic diseases	Infectious and parasitic diseases	Injuries	Mental disorders			Neoplasms
	Number	Percent					Total	Retardation	Other	
All areas	7,503,405	100.0	0.3	3.6	1.6	4.0	36.1	9.1	27.0	2.5
Alabama	193,985	100.0	0.2	4.3	1.0	4.5	30.2	8.4	21.8	2.3
Alaska	10,644	100.0	0.3	2.9	1.2	4.8	36.7	7.9	28.8	2.9
Arizona	134,584	100.0	0.2	3.3	1.4	4.3	39.8	5.8	34.0	2.2
Arkansas	117,523	100.0	0.3	4.1	1.1	4.5	27.4	9.3	18.1	2.6
California	630,032	100.0	0.3	3.1	2.4	4.1	38.6	6.8	31.8	2.6
Colorado	80,206	100.0	0.4	3.1	1.6	4.8	33.0	7.7	25.3	2.7
Connecticut	75,811	100.0	0.3	3.2	1.6	3.0	43.5	10.4	33.1	2.6
Delaware	23,121	100.0	0.3	3.8	1.9	3.9	33.1	8.6	24.5	2.8
District of Columbia	11,327	100.0	0.1	3.2	6.3	2.4	42.7	11.7	31.0	1.7
Florida	442,961	100.0	0.3	3.8	2.8	4.9	33.1	6.4	26.7	2.9
Georgia	224,316	100.0	0.2	4.4	2.2	3.9	31.8	9.4	22.4	2.7
Hawaii	21,398	100.0	0.2	2.8	1.9	3.8	44.1	8.1	36.0	2.8
Idaho	32,849	100.0	0.3	3.3	0.8	4.7	37.7	8.2	29.5	2.6
Illinois	261,607	100.0	0.2	4.0	1.4	3.5	40.7	11.0	29.7	2.7
Indiana	164,140	100.0	0.2	4.6	1.1	3.4	37.1	11.4	25.7	2.7
Iowa	69,800	100.0	0.3	3.9	0.7	3.8	39.3	13.6	25.7	2.7
Kansas	61,247	100.0	0.3	4.4	1.0	4.5	36.5	11.4	25.1	2.6
Kentucky	183,753	100.0	0.2	3.4	0.8	3.5	35.9	9.2	26.7	2.1
Louisiana	131,762	100.0	0.2	3.7	1.4	4.3	28.8	11.7	17.1	2.4
Maine	51,940	100.0	0.3	3.0	0.7	3.6	42.5	8.4	34.1	2.1
Maryland	103,958	100.0	0.4	3.6	2.5	3.9	34.7	9.5	25.2	3.1
Massachusetts	173,729	100.0	0.3	2.4	1.6	3.3	47.3	7.9	39.4	2.4
Michigan	280,842	100.0	0.3	3.7	0.9	3.4	39.6	9.5	30.1	2.5
Minnesota	103,264	100.0	0.3	2.6	1.0	4.0	47.3	12.0	35.3	2.7
Mississippi	123,361	100.0	0.2	4.7	1.2	4.1	34.1	9.7	24.4	2.4
Missouri	183,333	100.0	0.3	4.5	1.2	4.4	32.7	9.7	23.0	2.4
Montana	23,330	100.0	0.3	2.8	0.8	5.3	34.2	8.9	25.3	2.4
Nebraska	37,926	100.0	0.3	3.9	1.0	4.6	34.0	10.9	23.1	2.7
Nevada	49,047	100.0	0.3	3.5	1.7	4.6	30.7	4.7	26.0	2.5
New Hampshire	36,671	100.0	0.3	2.4	0.7	3.6	45.5	7.2	38.3	2.3
New Jersey	177,954	100.0	0.3	3.0	1.8	3.6	36.0	8.2	27.8	3.1
New Mexico	50,955	100.0	0.3	3.5	1.2	5.1	35.2	7.5	27.7	2.1
New York	472,955	100.0	0.3	3.0	2.3	3.6	32.6	8.7	23.9	2.7
North Carolina	282,420	100.0	0.2	4.6	1.5	3.6	32.1	10.3	21.8	2.7
North Dakota	13,283	100.0	0.5	2.6	0.6	4.4	39.6	15.1	24.5	2.6
Ohio	286,617	100.0	0.3	3.7	0.9	3.0	44.5	12.2	32.3	2.3
Oklahoma	103,768	100.0	0.2	4.2	1.1	4.0	32.4	9.7	22.7	2.4
Oregon	84,901	100.0	0.3	3.3	1.3	4.9	35.4	8.3	27.1	2.7
Pennsylvania	342,384	100.0	0.3	3.7	1.2	4.2	34.0	10.1	23.9	2.7
Rhode Island	32,735	100.0	0.2	3.0	1.2	3.0	45.6	9.8	35.8	2.3

(Continued)

All Disabled Beneficiaries

Table 11.
Percentage distribution, by state or other area and diagnostic group, December 2005—Continued

State or area	Diseases of the—								Other	Unknown
	Blood and blood-forming organs	Circulatory system	Digestive system	Genitourinary system	Musculoskeletal system and connective tissue	Nervous system and sense organs	Respiratory system	Skin and subcutaneous tissue		
All areas	0.2	8.6	1.4	1.5	23.0	9.5	2.9	0.2	0.2	4.5
Alabama	0.3	10.5	1.3	1.5	27.7	8.5	3.2	0.3	0.2	4.1
Alaska	0.2	6.7	1.7	1.2	25.3	10.8	2.6	0.2	0.3	2.5
Arizona	0.2	7.0	1.6	1.4	22.8	9.7	2.6	0.2	0.3	2.9
Arkansas	0.3	11.0	1.5	1.1	29.9	9.2	3.6	0.3	0.1	3.0
California	0.2	6.9	1.6	1.8	23.3	9.8	1.7	0.2	0.2	3.2
Colorado	0.2	5.7	1.6	1.3	24.9	13.3	3.3	0.2	0.2	3.6
Connecticut	0.2	7.0	1.3	1.3	17.9	9.6	2.4	0.2	0.2	5.8
Delaware	0.3	8.5	1.4	1.8	25.9	9.2	2.9	0.2	0.3	3.8
District of Columbia	0.5	7.3	0.7	3.6	14.3	9.9	2.0	0.4	0.2	4.7
Florida	0.3	9.6	1.8	1.5	22.3	8.6	3.0	0.4	0.2	4.7
Georgia	0.4	10.5	1.4	2.0	22.9	8.5	3.4	0.2	0.2	5.3
Hawaii	0.1	9.2	1.0	2.6	16.8	8.4	1.9	0.2	0.3	3.8
Idaho	0.1	6.5	1.4	1.0	24.3	11.1	2.8	0.2	0.2	3.0
Illinois	0.3	8.7	1.2	1.7	17.8	10.1	2.9	0.2	0.2	4.3
Indiana	0.3	9.3	1.5	1.4	19.4	10.4	3.8	0.2	0.2	4.7
Iowa	0.2	6.9	1.2	1.2	20.8	10.7	3.2	0.2	0.2	4.8
Kansas	0.2	7.6	1.5	1.3	21.3	10.8	3.3	0.2	0.2	4.1
Kentucky	0.2	9.1	1.2	0.9	26.4	7.3	3.8	0.2	0.2	4.8
Louisiana	0.4	11.3	1.3	1.7	26.8	8.6	2.5	0.3	0.2	6.0
Maine	0.1	6.9	1.2	0.7	24.1	8.4	2.6	0.3	0.2	3.4
Maryland	0.4	9.7	1.4	2.4	18.9	10.8	2.9	0.2	0.2	5.0
Massachusetts	0.2	5.8	1.3	0.9	18.8	9.1	2.2	0.1	0.2	3.9
Michigan	0.2	8.4	1.2	1.4	21.2	9.5	2.8	0.2	0.2	4.4
Minnesota	0.2	6.3	1.1	1.1	16.7	10.8	2.0	0.1	0.2	3.7
Mississippi	0.3	11.8	1.1	1.7	21.3	8.3	3.0	0.3	0.2	5.5
Missouri	0.2	8.8	1.6	1.3	25.3	9.6	3.6	0.2	0.2	3.8
Montana	0.1	6.0	1.3	1.1	25.9	12.0	3.3	0.2	0.2	4.1
Nebraska	0.2	8.0	1.3	1.5	23.2	11.5	3.3	0.2	0.2	4.3
Nevada	0.2	9.3	1.9	1.5	26.4	10.2	3.6	0.2	0.3	3.1
New Hampshire	0.1	6.6	1.3	0.8	20.3	9.9	2.9	0.1	0.2	3.1
New Jersey	0.3	9.3	1.6	1.7	21.2	10.6	2.7	0.2	0.3	4.5
New Mexico	0.2	5.9	1.7	1.6	26.8	10.2	2.8	0.3	0.3	3.1
New York	0.3	8.1	1.2	1.4	27.4	9.0	2.6	0.2	0.1	5.4
North Carolina	0.3	10.6	1.4	1.7	23.6	8.4	3.5	0.2	0.2	5.3
North Dakota	0.1	7.6	1.2	1.3	20.4	11.5	2.8	0.2	0.2	4.4
Ohio	0.2	7.9	1.0	1.4	16.3	8.8	3.1	0.2	0.1	6.2
Oklahoma	0.2	9.7	1.5	1.3	26.4	9.7	3.7	0.2	0.2	2.7
Oregon	0.2	6.6	1.7	1.1	24.3	12.3	2.7	0.2	0.2	2.9
Pennsylvania	0.2	9.0	1.5	1.3	23.9	9.8	2.8	0.2	0.3	4.8
Rhode Island	0.2	6.9	1.4	0.9	19.4	8.5	2.5	0.3	0.3	4.4

(Continued)

Table 11.
Percentage distribution, by state or other area and diagnostic group, December 2005—Continued

State or area	Total		Congenital anomalies	Endocrine, nutritional, and metabolic diseases	Infectious and parasitic diseases	Injuries	Mental disorders			Neoplasms
	Number	Percent					Total	Retardation	Other	
South Carolina	149,642	100.0	0.2	3.8	1.4	4.1	33.1	9.0	24.1	2.5
South Dakota	16,911	100.0	0.5	2.7	0.9	3.6	37.2	12.4	24.8	2.2
Tennessee	208,370	100.0	0.2	3.8	1.0	3.4	35.9	9.1	26.8	2.4
Texas	440,636	100.0	0.2	4.7	2.0	4.4	30.6	7.9	22.7	2.8
Utah	33,978	100.0	0.5	3.4	0.9	3.9	40.5	10.8	29.7	2.2
Vermont	18,205	100.0	0.4	3.3	1.0	4.1	41.5	8.9	32.6	2.4
Virginia	189,193	100.0	0.3	3.8	1.4	3.7	33.1	10.2	22.9	2.8
Washington	138,546	100.0	0.3	3.3	1.4	3.9	41.0	7.9	33.1	2.8
West Virginia	93,309	100.0	0.2	4.4	0.6	4.8	30.9	11.2	19.7	2.1
Wisconsin	129,146	100.0	0.4	3.5	0.9	3.8	40.0	11.2	28.8	2.5
Wyoming	10,740	100.0	0.4	2.8	0.9	5.3	34.6	9.9	24.7	2.3
Outlying areas										
American Samoa	1,232	100.0	a	13.1	a	3.5	10.6	4.0	6.6	1.9
Guam	1,305	100.0	a	1.8	0.8	4.5	27.6	9.7	17.9	2.8
Northern Mariana Islands	234	100.0	0	3.0	a	6.8	26.9	10.7	16.2	3.8
Puerto Rico	165,134	100.0	0.2	1.5	0.9	3.5	46.4	7.5	38.9	1.1
Virgin Islands	1,979	100.0	a	1.8	1.5	5.0	29.7	9.9	19.8	2.1
Foreign countries	18,406	100.0	0.6	1.2	1.3	4.4	35.7	10.8	24.9	2.1

(Continued)

All Disabled Beneficiaries

Table 11.
Percentage distribution, by state or other area and diagnostic group, December 2005—Continued

State or area	Diseases of the—								Other	Unknown
	Blood and blood-forming organs	Circulatory system	Digestive system	Genitourinary system	Musculoskeletal system and connective tissue	Nervous system and sense organs	Respiratory system	Skin and subcutaneous tissue		
South Carolina	0.4	11.1	1.3	1.9	23.9	8.4	3.5	0.3	0.2	3.9
South Dakota	0.2	7.4	1.1	1.1	22.3	13.7	3.2	0.2	0.2	3.7
Tennessee	0.2	9.6	1.3	1.4	23.2	8.0	3.6	0.2	0.2	5.5
Texas	0.3	9.7	1.6	2.2	24.1	10.6	2.6	0.2	0.2	4.0
Utah	0.2	5.7	1.4	1.3	20.2	12.6	2.8	0.2	0.3	4.0
Vermont	0.2	6.2	1.3	0.7	21.3	9.2	2.8	0.2	0.3	5.0
Virginia	0.3	9.5	1.4	1.8	24.8	9.0	3.2	0.2	0.2	4.5
Washington	0.2	6.2	1.7	1.2	21.3	10.4	2.5	0.2	0.2	3.4
West Virginia	0.2	9.8	1.2	0.7	26.5	7.3	3.9	0.2	0.2	6.9
Wisconsin	0.2	7.0	1.3	1.3	19.8	11.4	2.4	0.2	0.2	5.2
Wyoming	0.1	6.9	1.5	1.2	24.3	12.6	4.2	0.2	0.3	2.4
Outlying areas										
American Samoa	a	10.1	0.8	1.9	38.2	10.6	3.3	2.1	1.0	1.9
Guam	a	14.7	1.3	5.1	21.5	13.1	2.7	a	1.4	1.8
Northern Mariana Islands	a	16.7	0	5.6	9.0	15.4	2.1	4.7	a	2.6
Puerto Rico	0.1	5.5	0.6	0.8	24.5	8.2	1.8	0.2	0.1	4.6
Virgin Islands	0.8	11.6	0.9	2.4	26.2	13.1	1.2	a	a	3.2
Foreign countries	0.1	8.4	0.8	0.7	19.8	10.4	1.2	0.2	0.2	13.1

SOURCE: Social Security Administration, Disabled Beneficiaries and Dependents Master Beneficiary Record file, 100 percent data.

NOTE: The diagnosis for disabled adult children typically was not recorded on the Master Beneficiary Record until 1984. Many beneficiaries entitled before that date are still on the rolls today.

a. Data not shown to avoid disclosure of information for particular individuals.

CONTACT: Kevin Kulzer (410) 965-5366 or di.asr@ssa.gov.

Table 12.
Number receiving Social Security disability benefits because of blindness or deafness,
by state or other area, December 2005

State or area	Blind				Deaf			
	Total	Workers	Widow(er)s	Adult children	Total	Workers	Widow(er)s	Adult children
All areas	106,957	94,103	2,282	10,572	60,894	51,235	1,070	8,589
Alabama	2,565	2,286	65	214	1,474	1,225	31	218
Alaska	156	147	a	a	114	103	a	a
Arizona	1,763	1,577	42	144	1,092	967	9	116
Arkansas	1,528	1,341	34	153	845	711	24	110
California	9,577	8,306	173	1,098	5,164	4,232	67	865
Colorado	1,031	926	15	90	815	735	12	68
Connecticut	1,184	1,006	24	154	696	591	7	98
Delaware	312	287	a	a	174	153	a	a
District of Columbia	186	168	a	a	279	232	a	a
Florida	5,035	4,517	122	396	4,107	3,474	55	578
Georgia	3,509	3,136	86	287	1,679	1,347	41	291
Hawaii	314	272	a	a	194	167	a	a
Idaho	471	420	7	44	209	187	a	a
Illinois	4,137	3,643	90	404	2,199	1,874	31	294
Indiana	2,709	2,449	45	215	1,479	1,284	30	165
Iowa	991	863	12	116	601	536	8	57
Kansas	1,040	935	19	86	599	539	6	54
Kentucky	2,320	1,980	65	275	1,278	1,051	33	194
Louisiana	2,033	1,744	60	229	1,098	779	45	274
Maine	529	464	5	60	323	293	a	a
Maryland	1,499	1,334	25	140	1,262	1,101	10	151
Massachusetts	2,751	2,217	44	490	1,194	1,029	15	150
Michigan	3,336	2,850	61	425	1,979	1,670	32	277
Minnesota	1,617	1,425	21	171	1,028	936	11	81
Mississippi	2,025	1,838	39	148	906	738	25	143
Missouri	2,615	2,329	52	234	1,308	1,141	18	149
Montana	287	259	7	21	176	152	a	a
Nebraska	566	510	5	51	324	298	7	19
Nevada	760	677	14	69	381	323	8	50
New Hampshire	359	309	9	41	221	194	6	21
New Jersey	2,635	2,345	45	245	1,500	1,288	23	189
New Mexico	809	701	23	85	403	343	14	46
New York	5,801	5,023	109	669	3,826	3,199	59	568
North Carolina	3,853	3,438	93	322	1,970	1,710	39	221
North Dakota	157	137	0	20	85	79	0	6
Ohio	4,243	3,781	106	356	2,488	2,115	56	317
Oklahoma	1,712	1,530	40	142	877	745	26	106
Oregon	1,453	1,262	25	166	870	750	13	107
Pennsylvania	4,650	4,086	87	477	2,496	2,097	47	352
Rhode Island	370	323	8	39	216	187	a	a

(Continued)

All Disabled Beneficiaries

Table 12.
Number receiving Social Security disability benefits because of blindness or deafness,
by state or other area, December 2005—Continued

State or area	Blind				Deaf			
	Total	Workers	Widow(er)s	Adult children	Total	Workers	Widow(er)s	Adult children
South Carolina	2,658	2,352	91	215	965	798	16	151
South Dakota	257	223	a	a	171	155	a	a
Tennessee	3,224	2,871	81	272	1,474	1,239	36	199
Texas	8,244	7,427	190	627	4,371	3,709	57	605
Utah	625	555	8	62	387	356	6	25
Vermont	177	156	a	a	128	112	a	a
Virginia	2,314	2,035	52	227	1,268	1,080	26	162
Washington	1,708	1,493	30	185	1,182	1,007	22	153
West Virginia	991	847	30	114	533	431	13	89
Wisconsin	1,550	1,360	24	166	1,092	959	15	118
Wyoming	119	108	a	a	68	63	0	5
Outlying areas								
Puerto Rico	1,802	1,518	63	221	1,133	637	30	466
Other ^b	105	94	a	a	59	42	a	a
Foreign countries	295	223	12	60	134	72	13	49

SOURCE: Social Security Administration, Disabled Beneficiaries and Dependents Master Beneficiary Record file, 100 percent data.

NOTE: The diagnosis for disabled adult children typically was not recorded on the Master Beneficiary Record until 1984. Many beneficiaries entitled before that date are still on the rolls today.

a. Data not shown to avoid disclosure of information for particular individuals.

b. Includes American Samoa, Guam, Northern Mariana Islands, and Virgin Islands.

CONTACT: Kevin Kulzer (410) 965-5366 or di.asr@ssa.gov.

Table 13.
Total monthly benefits, by state or other area, December 2005 (in thousands of dollars)

State or area	Total	Workers	Widow(er)s	Adult children
All areas	6,718,159	6,113,106	131,508	473,545
Alabama	168,386	154,607	3,978	9,801
Alaska	9,548	8,915	159	473
Arizona	126,438	118,552	2,029	5,856
Arkansas	100,115	92,784	2,253	5,078
California	578,489	528,323	9,474	40,692
Colorado	72,408	67,518	1,111	3,779
Connecticut	70,641	63,178	950	6,513
Delaware	21,927	20,332	311	1,284
District of Columbia	9,029	8,167	139	723
Florida	400,067	371,823	6,924	21,320
Georgia	197,098	181,030	4,183	11,884
Hawaii	19,762	17,939	331	1,492
Idaho	29,033	26,823	538	1,672
Illinois	240,046	213,696	4,791	21,558
Indiana	147,992	133,269	3,111	11,612
Iowa	59,909	53,343	1,020	5,547
Kansas	53,690	48,764	940	3,985
Kentucky	160,904	147,348	4,420	9,137
Louisiana	115,851	102,521	3,593	9,737
Maine	43,243	39,877	693	2,674
Maryland	96,263	87,583	1,547	7,133
Massachusetts	154,676	141,038	2,094	11,544
Michigan	266,406	237,670	5,613	23,122
Minnesota	91,827	83,231	1,110	7,485
Mississippi	102,857	94,047	2,619	6,190
Missouri	160,769	147,381	3,301	10,087
Montana	20,364	18,611	370	1,383
Nebraska	32,130	29,015	488	2,627
Nevada	47,534	44,966	785	1,784
New Hampshire	33,586	31,267	439	1,880
New Jersey	173,650	157,146	2,638	13,866
New Mexico	44,159	40,898	813	2,448
New York	444,313	398,965	7,587	37,761
North Carolina	247,320	229,150	4,481	13,688
North Dakota	10,903	9,547	168	1,189
Ohio	251,324	222,069	6,172	23,083
Oklahoma	91,042	83,376	2,074	5,592
Oregon	77,289	71,028	1,373	4,888
Pennsylvania	310,357	278,220	6,439	25,697
Rhode Island	28,553	26,177	409	1,968

(Continued)

All Disabled Beneficiaries

Table 13.
Total monthly benefits, by state or other area, December 2005 (in thousands of dollars)—Continued

State or area	Total	Workers	Widow(er)s	Adult children
South Carolina	132,682	122,215	2,727	7,740
South Dakota	13,854	12,428	217	1,209
Tennessee	179,088	163,997	4,277	10,814
Texas	389,039	354,977	8,944	25,119
Utah	30,344	27,585	487	2,272
Vermont	15,407	14,000	246	1,162
Virginia	170,514	156,626	3,471	10,417
Washington	127,434	117,153	2,151	8,131
West Virginia	86,604	78,255	2,564	5,785
Wisconsin	115,323	103,060	1,673	10,590
Wyoming	9,677	8,948	143	585
Outlying areas				
American Samoa	844	777	26	41
Guam	1,006	931	18	57
Northern Mariana Islands	128	111	2	15
Puerto Rico	121,437	109,913	2,588	8,936
Virgin Islands	1,700	1,498	41	161
Foreign countries	13,180	10,437	464	2,278

SOURCE: Social Security Administration, Disabled Beneficiaries and Dependents Master Beneficiary Record file, 100 percent data.

NOTES: Unnegotiated checks not deducted.

Data exclude lump-sum death payments.

CONTACT: Kevin Kulzer (410) 965-5366 or di.asr@ssa.gov.

Table 14.
Number, by type of representative payee, December 2005

Type of payee	Total	Workers	Widow(er)s	Adult children
All disabled beneficiaries	7,503,405	6,519,001	215,866	768,538
Without payee	6,123,879	5,753,163	201,842	168,874
With payee				
Parent (natural, adoptive, or stepparent)	466,911	224,005	562	242,344
Spouse	146,382	145,561	88	733
Child (natural, adoptive, or stepchild)	50,884	43,216	6,156	1,512
Other relative	265,619	137,456	3,229	124,934
Nonmental institution	134,938	57,547	1,559	75,832
Mental institution	99,986	28,367	318	71,301
Social agency	96,023	46,825	661	48,537
Public official	10,743	6,706	130	3,907
Financial organization	4,446	3,228	40	1,178
Other	103,594	72,927	1,281	29,386

SOURCE: Social Security Administration, Disabled Beneficiaries and Dependents Master Beneficiary Record file, 100 percent data.

CONTACT: Kevin Kulzer (410) 965-5366 or di.asr@ssa.gov.

All Disabled Beneficiaries

Table 15.
Representative payment, by sex and diagnostic group, December 2005

Diagnostic group	Workers			Widow(er)s			Adult children		
	Total	Number with payee	Percentage with payee	Total	Number with payee	Percentage with payee	Total	Number with payee	Percentage with payee
All disabled beneficiaries									
Total	6,519,001	765,838	11.7	215,866	14,024	6.5	768,538	599,664	78.0
Congenital anomalies	11,001	1,512	13.7	273	7	2.6	8,691	5,951	68.5
Endocrine, nutritional, and metabolic diseases	252,933	4,175	1.7	18,072	284	1.6	2,766	695	25.1
Infectious and parasitic diseases	111,927	3,602	3.2	1,833	56	3.1	3,107	1,773	57.1
Injuries	281,828	24,522	8.7	5,383	168	3.1	9,776	3,867	39.6
Mental disorders									
Retardation	320,564	177,480	55.4	9,737	2,524	25.9	349,646	308,409	88.2
Other	1,862,618	450,754	24.2	50,708	7,979	15.7	114,830	74,220	64.6
Neoplasms	185,049	2,947	1.6	4,395	70	1.6	1,847	1,024	55.4
Diseases of the—									
Blood and blood-forming organs	16,270	361	2.2	361	7	1.9	1,961	351	17.9
Circulatory system	620,852	31,058	5.0	21,242	847	4.0	3,489	1,682	48.2
Digestive system	100,934	2,820	2.8	2,505	64	2.6	620	123	19.8
Genitourinary system	108,701	1,334	1.2	1,899	40	2.1	1,842	372	20.2
Musculoskeletal system and connective tissue	1,656,997	17,326	1.0	61,844	577	0.9	5,266	1,086	20.6
Nervous system and sense organs	623,948	29,347	4.7	15,607	608	3.9	70,647	37,262	52.7
Respiratory system	202,821	2,561	1.3	11,021	132	1.2	1,005	332	33.0
Skin and subcutaneous tissue	15,662	197	1.3	506	5	1.0	265	50	18.9
Other	13,225	565	4.3	262	8	3.1	1,264	809	64.0
Unknown	133,671	15,277	11.4	10,218	648	6.3	191,516	161,658	84.4
Men									
Subtotal	3,517,269	501,265	14.3	7,562	578	7.6	420,025	335,226	79.8
Congenital anomalies	5,681	894	15.7	9	0	0	4,509	3,186	70.7
Endocrine, nutritional, and metabolic diseases	109,819	2,382	2.2	364	13	3.6	1,300	379	29.2
Infectious and parasitic diseases	82,587	2,887	3.5	98	a	a	1,649	982	59.6
Injuries	196,216	18,759	9.6	356	16	4.5	6,780	2,653	39.1
Mental disorders									
Retardation	206,274	117,629	57.0	358	97	27.1	188,865	169,953	90.0
Other	943,764	290,987	30.8	1,543	286	18.5	72,678	50,113	69.0
Neoplasms	89,067	1,784	2.0	153	5	3.3	1,042	595	57.1
Diseases of the—									
Blood and blood-forming organs	7,285	222	3.0	17	0	0	986	217	22.0
Circulatory system	416,306	20,137	4.8	1,171	53	4.5	1,872	951	50.8
Digestive system	54,760	2,089	3.8	139	8	5.8	321	70	21.8
Genitourinary system	65,229	890	1.4	123	a	a	964	211	21.9
Musculoskeletal system and connective tissue	848,703	11,308	1.3	1,957	27	1.4	2,265	604	26.7
Nervous system and sense organs	310,759	18,245	5.9	523	23	4.4	37,695	20,587	54.6
Respiratory system	100,722	1,655	1.6	343	10	2.9	456	194	42.5
Skin and subcutaneous tissue	6,488	111	1.7	16	0	0	105	28	26.7
Other	6,213	401	6.5	9	0	0	688	466	67.7
Unknown	67,396	10,885	16.2	383	33	8.6	97,850	84,037	85.9

(Continued)

Table 15.
Representative payment, by sex and diagnostic group, December 2005—Continued

Diagnostic group	Workers			Widow(er)s			Adult children		
	Total	Number with payee	Percentage with payee	Total	Number with payee	Percentage with payee	Total	Number with payee	Percentage with payee
Women									
Subtotal	3,001,732	264,573	8.8	208,304	13,446	6.5	348,513	264,438	75.9
Congenital anomalies	5,320	618	11.6	264	7	2.7	4,182	2,765	66.1
Endocrine, nutritional, and metabolic diseases	143,114	1,793	1.3	17,708	271	1.5	1,466	316	21.6
Infectious and parasitic diseases	29,340	715	2.4	1,735	a	a	1,458	791	54.3
Injuries	85,612	5,763	6.7	5,027	152	3.0	2,996	1,214	40.5
Mental disorders									
Retardation	114,290	59,851	52.4	9,379	2,427	25.9	160,781	138,456	86.1
Other	918,854	159,767	17.4	49,165	7,693	15.6	42,152	24,107	57.2
Neoplasms	95,982	1,163	1.2	4,242	65	1.5	805	429	53.3
Diseases of the—									
Blood and blood-forming organs	8,985	139	1.5	344	7	2.0	975	134	13.7
Circulatory system	204,546	10,921	5.3	20,071	794	4.0	1,617	731	45.2
Digestive system	46,174	731	1.6	2,366	56	2.4	299	53	17.7
Genitourinary system	43,472	444	1.0	1,776	a	a	878	161	18.3
Musculoskeletal system and connective tissue	808,294	6,018	0.7	59,887	550	0.9	3,001	482	16.1
Nervous system and sense organs	313,189	11,102	3.5	15,084	585	3.9	32,952	16,675	50.6
Respiratory system	102,099	906	0.9	10,678	122	1.1	549	138	25.1
Skin and subcutaneous tissue	9,174	86	0.9	490	5	1.0	160	22	13.8
Other	7,012	164	2.3	253	8	3.2	576	343	59.5
Unknown	66,275	4,392	6.6	9,835	615	6.3	93,666	77,621	82.9

SOURCE: Social Security Administration, Disabled Beneficiaries and Dependents Master Beneficiary Record file, 100 percent data.

NOTE: The diagnosis for disabled adult children typically was not recorded on the Master Beneficiary Record until 1984. Many beneficiaries entitled before that date are still on the rolls today.

a. Data not shown to avoid disclosure of information for particular individuals.

CONTACT: Kevin Kulzer (410) 965-5366 or di.asr@ssa.gov.

All Disabled Beneficiaries

Table 16.
Percentage distribution of disabled workers, by state or other area and monthly benefit,
December 2005

State or area	Number	Percentage distribution by dollar amount of monthly benefit							Monthly benefit (dollars)	
		Total	Less than 400.00	400.00–599.90	600.00–799.90	800.00–999.90	1,000.00–1,199.90	1,200.00–or more	Average	Median
All areas	6,519,001	100.0	6.5	13.5	23.2	18.4	13.3	25.1	938.00	869.70
Alabama	169,574	100.0	6.3	14.1	25.2	19.5	13.0	22.0	912.00	840.00
Alaska	9,640	100.0	7.7	14.7	23.7	16.9	12.6	24.4	925.00	840.00
Arizona	122,207	100.0	5.4	12.0	22.3	18.5	14.1	27.7	970.30	905.00
Arkansas	104,081	100.0	6.4	14.3	25.2	20.6	14.1	19.4	891.70	836.00
California	551,529	100.0	7.3	13.4	21.4	16.9	12.9	28.0	958.10	886.50
Colorado	72,439	100.0	6.1	14.0	23.4	18.7	13.5	24.4	932.30	863.00
Connecticut	64,751	100.0	5.1	12.1	22.3	18.6	13.7	28.1	976.00	906.00
Delaware	20,676	100.0	5.4	11.7	21.7	18.4	14.0	28.8	983.60	917.50
District of Columbia	9,752	100.0	7.9	17.1	28.1	19.9	12.1	14.8	837.60	773.00
Florida	396,342	100.0	5.8	13.3	23.7	19.0	13.7	24.6	938.40	869.00
Georgia	196,010	100.0	5.6	13.1	24.3	20.5	14.4	22.3	923.80	861.90
Hawaii	18,522	100.0	5.1	12.6	21.8	18.3	15.0	27.2	968.80	909.30
Idaho	29,315	100.0	7.5	14.7	23.1	17.5	13.4	23.6	915.20	847.00
Illinois	221,848	100.0	6.4	12.9	22.0	17.6	13.2	27.9	963.50	892.00
Indiana	141,879	100.0	6.6	13.5	22.9	18.3	13.3	25.2	939.60	870.50
Iowa	59,475	100.0	8.0	15.1	24.1	17.8	12.7	22.3	897.10	827.50
Kansas	53,485	100.0	6.9	14.5	23.9	18.5	13.5	22.7	912.00	844.50
Kentucky	160,126	100.0	7.6	14.6	23.0	17.6	12.7	24.5	920.50	849.00
Louisiana	108,904	100.0	7.8	13.6	22.4	16.8	12.3	27.1	941.60	866.50
Maine	46,143	100.0	7.3	15.9	26.8	19.7	12.6	17.7	864.40	799.50
Maryland	90,603	100.0	5.8	12.2	22.1	18.5	14.1	27.3	966.90	901.00
Massachusetts	152,111	100.0	5.7	13.7	24.7	19.4	13.2	23.3	927.40	853.00
Michigan	239,212	100.0	7.0	12.7	20.4	15.6	12.3	32.1	993.80	921.40
Minnesota	89,819	100.0	6.7	14.2	23.8	18.4	12.6	24.2	926.90	851.50
Mississippi	106,630	100.0	6.3	14.5	26.8	20.4	13.1	18.8	882.20	818.50
Missouri	161,227	100.0	6.8	14.2	24.3	18.8	13.1	22.8	914.40	844.00
Montana	20,527	100.0	6.9	15.3	23.8	18.3	12.8	22.9	906.90	839.50
Nebraska	32,812	100.0	7.3	15.4	25.2	18.9	13.4	19.8	884.50	819.00
Nevada	45,182	100.0	4.5	10.9	21.7	18.8	14.6	29.4	995.50	931.20
New Hampshire	32,998	100.0	4.7	12.0	23.9	20.7	14.6	24.1	947.80	884.00
New Jersey	153,611	100.0	4.7	11.2	20.5	17.6	13.5	32.6	1,023.30	950.50
New Mexico	45,256	100.0	7.6	14.3	23.9	18.7	13.4	22.0	903.90	839.00
New York	403,614	100.0	6.2	12.7	21.0	16.9	12.9	30.3	988.80	913.00
North Carolina	249,640	100.0	5.2	12.7	24.4	21.8	15.1	20.8	918.20	864.50
North Dakota	10,994	100.0	7.8	16.7	25.4	18.6	12.2	19.4	868.70	801.00
Ohio	241,960	100.0	8.5	15.3	22.3	16.5	12.2	25.3	918.10	841.50
Oklahoma	90,867	100.0	7.1	14.1	23.2	18.0	13.8	23.7	917.80	855.50
Oregon	75,363	100.0	6.5	14.1	22.5	17.7	13.0	26.2	942.70	870.00
Pennsylvania	292,767	100.0	6.7	12.9	22.2	18.0	13.6	26.7	950.50	884.50
Rhode Island	28,843	100.0	5.9	14.5	25.5	19.6	12.9	21.6	907.80	834.00

(Continued)

Table 16.
Percentage distribution of disabled workers, by state or other area and monthly benefit,
December 2005—Continued

State or area	Number	Percentage distribution by dollar amount of monthly benefit							Monthly benefit (dollars)	
		Total	Less than 400.00	400.00–599.90	600.00–799.90	800.00–999.90	1,000.00–1,199.90	1,200.00–or more	Average	Median
South Carolina	130,973	100.0	5.0	12.0	23.7	21.5	15.3	22.4	933.40	880.00
South Dakota	14,421	100.0	8.5	16.5	25.5	18.3	12.9	18.3	862.00	795.50
Tennessee	181,756	100.0	6.0	14.1	25.3	20.2	13.8	20.6	902.50	839.00
Texas	383,330	100.0	7.2	13.6	23.1	18.5	13.5	24.0	926.30	860.50
Utah	29,737	100.0	7.1	15.1	23.4	16.9	12.3	25.2	927.90	844.50
Vermont	15,845	100.0	6.8	15.0	25.3	20.2	13.7	19.1	883.80	824.00
Virginia	165,829	100.0	5.9	12.6	22.9	19.3	14.1	25.1	944.80	881.00
Washington	123,137	100.0	6.6	13.7	22.6	17.3	12.7	27.1	951.60	872.50
West Virginia	79,483	100.0	7.5	12.7	19.7	15.9	12.8	31.4	984.80	921.50
Wisconsin	110,319	100.0	7.0	14.0	22.9	17.6	13.0	25.5	934.40	863.50
Wyoming	9,606	100.0	7.3	15.0	23.2	16.2	12.5	25.8	931.80	848.50
Outlying areas										
American Samoa	1,085	100.0	13.0	23.3	30.5	17.0	a	a	716.20	676.50
Guam	1,140	100.0	12.2	15.3	27.1	17.6	12.9	14.9	816.70	762.80
Northern Mariana Islands	184	100.0	21.2	34.2	26.6	9.8	a	a	601.90	582.30
Puerto Rico	137,256	100.0	5.4	16.9	36.0	21.3	10.3	10.1	801.10	747.50
Virgin Islands	1,602	100.0	5.5	12.5	23.3	20.0	15.3	23.4	935.80	880.00
Foreign countries	12,564	100.0	15.5	14.0	21.2	17.2	12.9	19.3	830.80	792.50

SOURCE: Social Security Administration, Disabled Beneficiaries and Dependents Master Beneficiary Record file, 100 percent data.

a. Data not shown to avoid disclosure of information for particular individuals.

CONTACT: Kevin Kulzer (410) 965-5366 or di.asr@ssa.gov.

All Disabled Beneficiaries

Table 17.
Percentage distribution of disabled widow(er)s, by state or other area and monthly benefit,
December 2005

State or area	Number	Percentage distribution by dollar amount of monthly benefit										Monthly benefit (dollars)	
		Total	Less than 200.00	200.00–299.90	300.00–399.90	400.00–499.90	500.00–599.90	600.00–699.90	700.00–799.90	800.00–899.90	900.00 or more	Average	Median
All areas	215,866	100.0	9.2	8.4	10.1	12.6	12.1	10.9	9.5	7.7	19.6	609.30	582.10
Alabama	6,969	100.0	10.9	9.5	10.4	12.9	12.3	12.2	9.9	7.1	14.7	571.00	547.00
Alaska	233	100.0	4.3	6.4	8.6	12.0	10.3	11.6	9.9	6.4	30.5	684.50	669.00
Arizona	3,181	100.0	7.8	8.0	9.0	12.6	12.0	9.8	9.5	8.8	22.5	638.00	605.00
Arkansas	4,086	100.0	12.4	10.2	11.1	12.1	13.0	11.9	8.7	6.7	13.9	551.40	529.00
California	14,379	100.0	6.7	7.2	8.9	12.4	11.8	10.2	9.6	8.6	24.6	659.00	629.00
Colorado	1,794	100.0	8.2	8.0	10.1	12.6	12.2	10.9	9.7	8.1	20.2	619.30	593.50
Connecticut	1,563	100.0	8.4	8.1	10.7	14.9	11.5	10.7	9.5	7.0	19.3	607.80	567.00
Delaware	517	100.0	9.5	7.7	10.8	13.3	12.0	9.9	10.3	7.0	19.5	600.90	576.00
District of Columbia	241	100.0	7.1	8.7	11.6	16.2	13.7	12.4	8.7	5.8	15.8	578.40	563.00
Florida	11,863	100.0	10.2	9.0	11.3	12.7	12.4	11.3	9.3	7.1	16.9	583.80	552.00
Georgia	7,582	100.0	12.5	9.8	11.4	13.5	13.0	10.5	8.8	6.5	14.2	551.80	521.00
Hawaii	505	100.0	5.9	6.5	9.7	13.5	12.7	9.9	10.7	6.7	24.4	655.70	609.00
Idaho	822	100.0	7.2	7.4	9.0	11.8	10.2	10.9	10.2	8.8	24.5	655.00	637.00
Illinois	7,440	100.0	7.7	7.6	9.0	11.8	12.0	10.4	9.6	8.3	23.5	644.10	618.00
Indiana	4,912	100.0	8.5	7.6	9.6	11.8	11.2	11.0	9.5	8.3	22.4	633.50	612.00
Iowa	1,698	100.0	7.7	8.8	11.3	11.2	13.2	12.3	10.2	8.4	16.8	600.50	587.00
Kansas	1,555	100.0	8.8	8.7	9.8	13.7	12.5	9.3	10.1	8.6	18.5	604.90	568.00
Kentucky	7,084	100.0	7.8	7.7	9.9	12.6	12.3	11.6	9.6	7.7	20.7	624.00	596.00
Louisiana	5,543	100.0	7.3	6.3	9.1	12.0	12.8	11.7	9.2	8.5	23.0	648.20	622.00
Maine	1,194	100.0	9.1	8.4	11.6	14.7	13.3	9.0	9.6	8.1	16.1	580.10	545.30
Maryland	2,420	100.0	7.2	7.6	8.7	11.9	12.9	10.7	10.1	8.6	22.1	639.50	618.00
Massachusetts	3,403	100.0	7.0	8.4	10.5	14.7	12.3	11.0	10.0	6.7	19.4	615.40	575.00
Michigan	8,131	100.0	6.7	6.4	8.1	10.6	10.5	10.6	9.5	8.7	28.9	690.40	673.00
Minnesota	1,807	100.0	8.5	7.7	10.8	12.2	12.9	11.6	9.9	7.4	19.1	614.50	581.00
Mississippi	4,714	100.0	11.5	10.2	11.2	13.5	13.1	11.2	8.8	6.4	14.2	555.70	524.00
Missouri	5,654	100.0	10.6	9.0	10.9	12.8	12.3	10.7	9.4	6.8	17.6	583.90	549.50
Montana	605	100.0	6.3	9.4	10.4	15.7	13.2	7.9	10.6	7.8	18.7	611.80	566.00
Nebraska	854	100.0	11.4	9.0	13.5	12.2	10.5	8.5	9.8	7.8	17.2	571.70	535.80
Nevada	1,211	100.0	8.2	8.1	9.7	11.6	10.2	9.6	10.2	7.8	24.4	647.90	618.00
New Hampshire	760	100.0	11.7	10.1	12.2	11.4	10.3	11.4	7.8	8.4	16.6	577.70	541.00
New Jersey	4,208	100.0	9.8	7.6	9.8	12.5	11.8	9.9	9.2	6.9	22.5	627.00	588.00
New Mexico	1,273	100.0	5.7	7.9	10.1	12.1	12.6	11.1	11.9	7.7	20.7	638.60	612.00
New York	12,188	100.0	8.4	7.5	10.1	12.6	12.1	10.8	10.0	7.9	20.5	622.60	593.50
North Carolina	8,757	100.0	15.5	12.0	12.1	13.2	12.2	9.7	8.3	5.6	11.5	511.80	478.00
North Dakota	298	100.0	11.7	9.4	12.1	11.4	10.7	14.1	8.4	7.4	14.8	562.30	552.30
Ohio	9,344	100.0	6.9	6.7	9.3	11.3	11.3	10.2	10.3	9.1	24.9	660.70	641.00
Oklahoma	3,471	100.0	9.7	7.8	10.6	13.8	12.6	10.3	8.9	7.9	18.4	597.50	561.50
Oregon	2,116	100.0	7.8	7.0	10.0	11.5	10.3	10.4	9.1	8.8	25.0	648.90	625.50
Pennsylvania	10,033	100.0	7.4	7.4	9.1	11.7	11.9	11.1	10.0	8.6	22.8	641.90	620.00
Rhode Island	718	100.0	10.9	9.3	11.8	13.5	11.7	10.4	7.9	8.6	15.7	569.20	528.80

(Continued)

Table 17.
Percentage distribution of disabled widow(er)s, by state or other area and monthly benefit,
December 2005—Continued

State or area	Number	Percentage distribution by dollar amount of monthly benefit										Monthly benefit (dollars)	
		Total	Less than 200.00	200.00–299.90	300.00–399.90	400.00–499.90	500.00–599.90	600.00–699.90	700.00–799.90	800.00–899.90	900.00 or more	Average	Median
South Carolina	5,169	100.0	14.3	10.4	12.0	12.7	12.7	11.4	8.1	6.3	12.1	527.70	505.00
South Dakota	389	100.0	8.5	12.1	12.9	13.6	12.6	13.1	8.5	4.9	13.9	558.60	536.00
Tennessee	7,696	100.0	11.9	10.3	10.7	13.1	12.3	11.4	8.8	7.4	14.1	555.80	530.00
Texas	14,475	100.0	8.5	8.0	9.7	12.6	11.8	11.7	9.6	8.1	19.9	618.00	594.00
Utah	743	100.0	7.0	6.9	9.6	12.2	12.2	10.1	11.0	7.9	23.0	655.10	620.00
Vermont	439	100.0	10.5	11.2	10.0	13.7	12.3	13.2	8.2	6.2	14.8	559.30	535.00
Virginia	5,782	100.0	10.5	8.4	10.1	13.0	11.4	10.4	9.3	7.5	19.4	600.40	571.00
Washington	3,208	100.0	5.9	6.3	10.3	10.6	10.5	12.0	10.3	8.7	25.3	670.50	652.00
West Virginia	3,792	100.0	5.6	6.5	8.1	11.3	11.4	11.5	10.8	8.8	26.0	676.40	659.00
Wisconsin	2,748	100.0	9.3	8.7	8.8	12.3	12.6	12.2	8.9	7.8	19.5	609.10	587.50
Wyoming	235	100.0	6.0	7.2	11.5	16.6	11.1	13.2	8.9	7.2	18.3	610.20	589.00
Outlying areas													
American													
Samoa	53	100.0	15.1	a	13.2	20.8	13.2	a	a	a	a	485.20	453.50
Guam	32	100.0	a	a	18.8	a	a	a	a	a	a	556.00	481.50
Northern													
Mariana Islands													
Mariana Islands	6	100.0	0	a	a	a	a	0	0	0	0	379.30	375.00
Puerto Rico	5,142	100.0	10.7	12.7	12.1	17.9	15.1	10.8	8.1	5.1	7.6	503.60	478.50
Virgin Islands	64	100.0	a	a	a	15.6	15.6	14.1	17.2	7.8	15.6	645.80	637.50
Foreign countries	767	100.0	8.1	5.6	10.3	14.1	14.9	11.9	10.4	8.1	16.7	605.40	579.00

SOURCE: Social Security Administration, Disabled Beneficiaries and Dependents Master Beneficiary Record file, 100 percent data.

a. Data not shown to avoid disclosure of information for particular individuals.

CONTACT: Kevin Kulzer (410) 965-5366 or di.asr@ssa.gov.

All Disabled Beneficiaries

Table 18.
Percentage distribution of disabled adult children, by state or other area and monthly benefit,
December 2005

State or area	Number	Percentage distribution by dollar amount of monthly benefit										Monthly benefit (dollars)	
		Total	Less than 200.00	200.00–299.90	300.00–399.90	400.00–499.90	500.00–599.90	600.00–699.90	700.00–799.90	800.00–899.90	900.00 or more	Average	Median
All areas	768,538	100.0	5.6	5.6	11.6	12.9	13.2	13.6	13.2	9.1	15.2	616.30	608.00
Alabama	17,442	100.0	6.6	7.2	15.3	15.4	14.2	12.8	10.7	7.5	10.4	562.00	536.00
Alaska	771	100.0	6.4	6.6	13.5	11.5	10.9	13.9	11.2	8.9	17.1	614.00	608.00
Arizona	9,196	100.0	5.4	5.1	9.6	12.4	12.7	13.9	13.9	9.5	17.5	636.90	635.00
Arkansas	9,356	100.0	7.7	6.9	15.3	16.7	15.3	13.1	10.1	6.7	8.2	542.90	518.00
California	64,124	100.0	5.7	5.3	10.0	12.0	12.8	13.4	13.9	9.7	17.2	634.60	630.00
Colorado	5,973	100.0	5.2	4.8	10.5	12.6	13.0	13.6	14.0	9.6	16.7	632.80	629.50
Connecticut	9,497	100.0	3.9	3.9	7.9	9.0	11.5	14.5	17.0	11.2	21.1	685.90	696.00
Delaware	1,928	100.0	3.0	3.5	9.5	11.2	12.7	15.2	15.9	10.1	18.9	666.20	667.00
District of Columbia	1,334	100.0	7.6	7.4	16.6	16.2	15.5	11.4	10.5	6.1	8.6	542.00	511.50
Florida	34,756	100.0	5.8	5.7	10.6	13.1	14.1	14.0	13.3	9.0	14.5	613.50	606.00
Georgia	20,724	100.0	5.6	6.0	15.0	15.9	15.4	12.8	11.0	7.4	10.9	573.50	548.00
Hawaii	2,371	100.0	4.2	4.9	11.1	11.6	13.9	15.7	13.7	10.6	14.4	629.30	623.00
Idaho	2,712	100.0	6.0	5.1	9.6	12.7	15.0	14.9	13.4	8.9	14.3	616.70	609.30
Illinois	32,319	100.0	4.2	4.4	8.9	10.8	11.9	14.0	15.1	10.8	20.0	667.20	671.00
Indiana	17,349	100.0	3.5	3.9	8.3	10.8	12.3	15.3	15.9	10.8	19.2	669.40	677.00
Iowa	8,627	100.0	4.1	4.1	8.7	13.1	13.9	15.2	14.7	10.2	16.1	643.00	639.00
Kansas	6,207	100.0	4.0	4.2	9.9	12.5	14.1	14.0	15.1	10.4	15.8	642.10	639.00
Kentucky	16,543	100.0	7.9	7.8	15.4	15.5	13.3	12.2	10.6	6.7	10.6	552.40	522.00
Louisiana	17,315	100.0	8.2	7.6	14.7	15.0	13.5	11.9	9.9	7.0	12.2	562.40	531.00
Maine	4,603	100.0	7.1	5.3	11.5	15.3	15.3	13.8	13.1	8.3	10.2	580.90	567.50
Maryland	10,935	100.0	3.6	4.3	10.4	11.6	13.9	14.0	14.6	9.4	18.2	652.40	646.00
Massachusetts	18,215	100.0	5.6	5.2	10.2	11.9	12.7	13.3	14.1	10.3	16.7	633.80	633.00
Michigan	33,499	100.0	3.7	3.6	7.4	9.5	11.3	14.0	16.6	11.7	22.2	690.40	701.00
Minnesota	11,638	100.0	4.3	3.9	10.0	12.7	13.2	14.8	14.4	10.2	16.6	643.30	642.00
Mississippi	12,017	100.0	8.4	9.4	18.5	17.1	14.0	10.8	8.6	5.5	7.7	515.20	477.00
Missouri	16,452	100.0	5.8	5.1	11.3	13.5	13.7	14.0	13.1	9.1	14.4	613.20	604.00
Montana	2,198	100.0	3.7	4.3	10.2	13.9	14.8	15.1	13.5	9.6	14.8	629.50	619.00
Nebraska	4,260	100.0	4.6	4.7	11.0	13.4	15.3	15.0	13.4	9.0	13.6	616.80	607.00
Nevada	2,654	100.0	4.0	4.0	8.8	10.6	13.3	13.4	14.5	10.4	21.0	672.30	669.00
New Hampshire	2,913	100.0	4.7	4.1	8.4	12.3	13.7	14.6	14.9	11.5	16.0	645.60	647.50
New Jersey	20,135	100.0	3.6	3.7	8.1	9.6	11.8	14.1	15.5	11.4	22.2	688.80	693.00
New Mexico	4,426	100.0	8.2	8.1	14.8	14.6	13.4	13.0	10.0	7.4	10.5	553.10	530.30
New York	57,153	100.0	4.1	4.2	9.1	11.1	12.2	14.4	15.5	10.7	18.6	660.80	666.00
North Carolina	24,023	100.0	5.4	6.0	15.0	16.1	15.6	13.2	11.4	7.2	10.0	569.90	544.00
North Dakota	1,991	100.0	4.3	5.4	11.6	16.3	15.4	15.9	11.7	7.4	12.0	597.20	578.00
Ohio	35,313	100.0	4.4	4.4	9.4	11.0	12.5	14.4	14.9	10.5	18.5	653.80	659.00
Oklahoma	9,430	100.0	5.4	5.9	12.9	14.6	14.3	13.9	12.3	8.2	12.5	593.10	574.00
Oregon	7,422	100.0	4.3	4.2	8.4	10.8	12.7	15.1	14.8	11.3	18.3	658.70	664.00
Pennsylvania	39,584	100.0	4.6	4.2	8.9	11.3	13.0	15.4	15.1	10.2	17.3	649.30	654.00
Rhode Island	3,174	100.0	5.2	6.0	10.9	12.1	13.3	14.7	13.3	10.1	14.4	620.20	619.00

(Continued)

Table 18.
Percentage distribution of disabled adult children, by state or other area and monthly benefit,
December 2005—Continued

State or area	Number	Percentage distribution by dollar amount of monthly benefit										Monthly benefit (dollars)	
		Total	Less than 200.00	200.00–299.90	300.00–399.90	400.00–499.90	500.00–599.90	600.00–699.90	700.00–799.90	800.00–899.90	900.00 or more	Average	Median
South Carolina	13,500	100.0	5.0	6.0	14.8	16.0	15.9	13.4	11.1	7.7	10.0	573.40	547.00
South Dakota	2,101	100.0	6.0	5.1	13.6	17.6	14.6	12.7	12.5	7.9	9.9	575.40	553.00
Tennessee	18,918	100.0	5.8	5.8	15.3	15.7	15.0	13.3	10.9	7.5	10.6	571.70	548.00
Texas	42,831	100.0	6.8	6.6	13.2	14.5	13.8	12.6	11.2	7.8	13.4	586.60	562.00
Utah	3,498	100.0	5.0	4.8	8.4	11.6	12.9	14.9	15.1	10.0	17.4	649.70	653.50
Vermont	1,921	100.0	4.7	4.7	11.1	15.0	15.2	14.0	14.6	8.8	11.8	604.80	593.00
Virginia	17,582	100.0	5.3	5.8	13.3	14.7	14.3	14.2	12.1	8.0	12.3	592.60	574.00
Washington	12,201	100.0	4.2	4.1	8.6	10.9	12.2	13.8	15.4	11.2	19.5	666.50	674.00
West Virginia	10,034	100.0	6.4	6.3	13.8	14.6	13.6	14.3	12.2	7.6	11.2	576.70	562.00
Wisconsin	16,079	100.0	3.9	3.7	8.5	11.3	12.8	15.1	16.2	10.5	17.9	658.70	668.00
Wyoming	899	100.0	3.8	4.3	8.8	14.0	15.0	14.5	12.7	7.7	19.2	650.90	631.50
Outlying areas													
American													
Samoa	94	100.0	11.7	16.0	a	25.5	17.0	8.5	a	a	a	438.80	425.30
Guam	133	100.0	15.8	17.3	23.3	15.0	a	a	a	a	a	430.10	373.50
Northern Mariana Islands													
Puerto Rico	22,736	100.0	15.7	15.6	27.7	17.4	10.3	5.8	3.6	1.9	2.0	393.30	361.00
Virgin Islands	313	100.0	6.7	10.2	12.8	20.1	16.9	16.0	8.9	a	a	513.50	501.00
Foreign countries	5,075	100.0	16.8	11.8	18.3	15.1	11.6	10.2	7.7	3.8	4.8	448.90	418.00

SOURCE: Social Security Administration, Disabled Beneficiaries and Dependents Master Beneficiary Record file, 100 percent data.

a. Data not shown to avoid disclosure of information for particular individuals.

CONTACT: Kevin Kulzer (410) 965-5366 or di.asr@ssa.gov.

Disabled Workers

Table 19.
Percentage distribution, by sex and age, December 1960–2005, selected years

Year	Number (thousands)	Percentage distribution									Average age
		Total, all ages	Under 30	30–34	35–39 ^a	40–44	45–49	50–54	55–59	60–FRA	
All disabled workers^b											
1996	4,400	100.0	3.6	5.6	9.0	11.6	13.8	15.5	18.6	22.4	50.0
1997	4,508	100.0	3.2	5.1	8.6	11.6	13.7	16.1	19.2	22.4	50.3
1998	4,699	100.0	3.0	4.8	8.3	11.6	13.8	16.5	19.7	22.4	50.5
1999	4,879	100.0	2.8	4.4	8.0	11.5	14.0	17.0	20.0	22.3	50.6
2000	5,042	100.0	2.7	4.1	7.6	11.4	14.1	17.6	20.3	22.3	50.8
2001	5,268	100.0	2.8	4.0	7.2	11.1	14.1	17.7	20.7	22.4	50.9
2002	5,540	100.0	3.0	3.8	6.7	10.8	14.1	17.5	21.3	22.7	51.0
2003	5,869	100.0	3.1	3.7	6.3	10.4	14.0	17.3	21.5	23.7	51.3
2004	6,197	100.0	3.1	3.6	5.9	10.0	13.8	17.2	21.8	24.5	51.5
2005	6,519	100.0	3.1	3.4	5.7	9.5	13.6	17.2	22.3	25.2	51.8
Men											
1960	356	100.0	0.5	a	3.3	3.0	4.9	16.6	26.7	44.9	57.3
1965	734	100.0	1.0	a	7.5	7.6	10.4	15.4	24.7	33.3	54.4
1970	1,069	100.0	3.3	a	6.8	6.9	10.9	15.2	23.2	33.7	53.9
1975	1,711	100.0	4.6	a	7.5	6.2	9.7	15.8	23.2	33.0	53.5
1980	1,928	100.0	4.1	a	9.6	6.0	8.9	14.3	24.0	33.1	52.9
1981	--	--	--	--	--	--	--	--	--	--	--
1982	1,746	100.0	4.0	a	9.7	5.8	7.8	13.6	23.6	35.5	53.2
1983	1,731	100.0	4.2	a	10.4	6.3	8.0	13.0	23.1	35.0	52.9
1984	1,748	100.0	4.4	a	11.3	6.8	8.3	12.8	22.2	34.2	52.5
1985	1,785	100.0	4.6	a	12.3	7.3	8.6	12.9	21.4	32.9	51.9
1986	1,827	100.0	4.9	a	13.3	7.9	8.9	12.7	20.7	31.5	51.4
1987	1,857	100.0	4.8	a	13.8	8.5	9.4	12.5	20.1	30.8	51.1
1988	1,869	100.0	4.7	a	14.3	9.0	9.8	12.7	19.6	29.9	50.9
1989	1,906	100.0	4.5	a	14.7	9.6	10.3	12.7	19.4	28.8	50.7
1990	1,965	100.0	4.5	a	15.2	10.3	10.7	12.7	19.1	27.5	50.4
1991	2,066	100.0	4.5	a	15.6	10.7	11.2	13.0	18.6	26.4	50.1
1992	2,221	100.0	4.6	a	16.0	11.0	12.0	13.4	18.0	25.0	49.9
1993	2,358	100.0	4.6	a	16.2	11.2	12.3	13.9	17.9	23.9	49.6
1994	2,476	100.0	4.3	a	16.1	11.4	12.8	14.2	17.8	23.4	49.6
1995	2,573	100.0	4.0	a	15.5	11.5	13.4	14.5	18.0	23.2	49.7
1996	2,653	100.0	3.7	5.7	9.2	11.6	13.7	15.0	18.3	22.9	50.0
1997	2,667	100.0	3.3	5.2	8.7	11.6	13.6	15.6	18.9	23.0	50.3
1998	2,737	100.0	3.1	4.8	8.4	11.6	13.7	16.1	19.3	23.0	50.5
1999	2,801	100.0	2.8	4.5	8.1	11.6	13.8	16.7	19.7	22.9	50.7
2000	2,856	100.0	2.8	4.2	7.6	11.4	13.9	17.3	20.0	22.8	50.8
2001	2,948	100.0	2.9	4.0	7.2	11.2	14.0	17.5	20.5	23.0	51.0
2002	3,067	100.0	3.1	3.8	6.7	10.8	14.0	17.3	21.1	23.2	51.1
2003	3,221	100.0	3.2	3.6	6.3	10.4	13.9	17.1	21.4	24.1	51.3
2004	3,373	100.0	3.2	3.4	5.8	10.0	13.7	17.0	21.9	25.0	51.6
2005	3,517	100.0	3.2	3.3	5.5	9.4	13.5	17.0	22.4	25.7	51.9

(Continued)

Table 19.
Percentage distribution, by sex and age, December 1960–2005, selected years—Continued

Year	Number (thousands)	Percentage distribution									Average age
		Total, all ages	Under 30	30–34	35–39 ^a	40–44	45–49	50–54	55–59	60–FRA	
Women											
1960	99	100.0	0.3	a	3.2	3.2	5.3	19.4	31.4	37.2	56.7
1965	254	100.0	0.6	a	5.4	6.3	9.8	16.2	27.3	34.3	55.2
1970	424	100.0	1.9	a	5.1	5.6	10.1	15.9	26.0	35.3	55.0
1975	778	100.0	3.3	a	6.1	5.3	9.0	16.3	25.5	34.5	54.4
1980	931	100.0	3.4	a	8.2	5.3	8.2	14.4	25.4	35.0	53.7
1981	--	--	--	--	--	--	--	--	--	--	--
1982	858	100.0	3.3	a	8.5	5.1	7.2	13.7	25.2	37.0	53.9
1983	838	100.0	3.5	a	9.3	5.7	7.5	12.9	24.3	36.8	53.6
1984	849	100.0	3.7	a	10.2	6.3	7.8	12.8	23.2	36.0	53.2
1985	872	100.0	3.8	a	11.2	6.9	8.3	12.9	22.3	34.6	52.6
1986	902	100.0	4.1	a	12.1	7.6	8.8	12.9	21.6	32.9	52.0
1987	929	100.0	4.2	a	12.7	8.2	9.4	12.9	20.9	31.7	51.7
1988	952	100.0	4.0	a	13.1	8.7	9.9	13.2	20.6	30.5	51.4
1989	989	100.0	4.0	a	13.5	9.2	10.6	13.4	20.1	29.2	51.1
1990	1,046	100.0	3.9	a	14.0	9.8	11.1	13.4	19.9	27.9	50.8
1991	1,133	100.0	4.0	a	14.3	10.3	11.6	13.8	19.4	26.5	50.5
1992	1,252	100.0	4.3	a	14.6	10.7	12.2	14.3	18.8	25.0	50.1
1993	1,371	100.0	4.3	a	14.9	11.0	12.6	14.8	18.9	23.5	49.9
1994	1,491	100.0	4.1	a	14.8	11.2	13.1	15.3	18.7	22.8	49.9
1995	1,614	100.0	3.8	a	14.5	11.5	13.6	15.7	18.8	22.2	49.9
1996	1,747	100.0	3.5	5.4	8.7	11.6	13.9	16.2	19.1	21.7	50.1
1997	1,842	100.0	3.1	5.0	8.4	11.6	13.9	16.7	19.6	21.5	50.3
1998	1,961	100.0	2.9	4.7	8.2	11.5	14.0	17.0	20.1	21.5	50.5
1999	2,078	100.0	2.7	4.3	7.9	11.5	14.2	17.5	20.5	21.4	50.6
2000	2,186	100.0	2.7	4.1	7.5	11.3	14.3	17.9	20.7	21.6	50.8
2001	2,320	100.0	2.8	4.0	7.1	11.1	14.3	18.0	21.1	21.7	50.9
2002	2,472	100.0	2.9	3.9	6.8	10.8	14.3	17.7	21.5	22.1	51.0
2003	2,647	100.0	3.0	3.8	6.4	10.5	14.2	17.6	21.6	23.0	51.2
2004	2,824	100.0	3.0	3.7	6.0	10.2	14.0	17.5	21.8	23.8	51.4
2005	3,002	100.0	2.9	3.5	5.8	9.7	13.7	17.6	22.2	24.5	51.7

SOURCES: Social Security Administration, *Annual Statistical Supplement to the Social Security Bulletin*, Table 5.D4 from 1960 to 1995; data for 1988 and 1990 to 1995 are based on a 10 percent sample file from the Master Beneficiary Record; Social Security Disability Insurance Beneficiaries, 100 percent data, from 1996 to 2000; beginning with 2001, Disabled Beneficiaries and Dependents Master Beneficiary Record file, 100 percent data.

NOTE: FRA = full retirement age; -- = not available.

a. Ages 30–34 were grouped with ages 35–39 before 1996.

b. Combined data for men and women are not available before 1996.

CONTACT: Kevin Kulzer (410) 965-5366 or di.asr@ssa.gov.

Disabled Workers

Table 20.
Number, average primary insurance amount, and average monthly benefit, by age and sex,
December 2005

Age	Total			Men			Women		
	Number	Average PIA (dollars)	Average monthly benefit (dollars)	Number	Average PIA (dollars)	Average monthly benefit (dollars)	Number	Average PIA (dollars)	Average monthly benefit (dollars)
All disabled workers	6,519,001	943.30	938.00	3,517,269	1,060.40	1,051.20	3,001,732	806.10	805.30
Under 25	54,623	489.30	504.30	32,009	499.30	512.60	22,614	475.20	492.50
25-29	146,385	607.70	614.60	80,573	620.70	625.60	65,812	591.70	601.30
30-34	221,138	692.40	694.40	115,271	712.00	710.00	105,867	671.00	677.40
35-39	368,579	763.30	762.20	194,960	790.00	783.80	173,619	733.20	738.00
40-44	622,211	823.60	819.20	330,915	866.90	857.50	291,296	774.40	775.80
45-49	886,513	890.90	883.90	474,249	962.60	950.40	412,264	808.50	807.40
50-54	1,123,773	962.30	954.40	596,710	1,070.90	1,058.40	527,063	839.40	836.60
55-59	1,455,621	1,027.40	1,020.30	788,317	1,177.50	1,167.10	667,304	850.00	846.80
60-64	1,506,574	1,049.90	1,044.80	829,479	1,236.00	1,228.20	677,095	821.80	820.10
65-FRA	133,584	1,036.40	1,031.40	74,786	1,226.80	1,218.60	58,798	794.20	793.20

SOURCE: Social Security Administration, Disabled Beneficiaries and Dependents Master Beneficiary Record file, 100 percent data.

NOTES: The average monthly benefit includes secondary benefit amounts for some beneficiaries who are dually entitled. This results in the average monthly benefit being larger than the average PIA for some age groups.

PIA = primary insurance amount; FRA = full retirement age.

CONTACT: Kevin Kulzer (410) 965-5366 or di.asr@ssa.gov.

Table 21.
Distribution, by diagnostic group, December 1996–2005

Year	Total	Congenital anomalies	Endocrine, nutritional, and metabolic diseases	Infectious and parasitic diseases ^a	Injuries	Mental disorders			Neoplasms
						Total	Retardation	Other	
Number									
1996	4,399,932	9,023	197,272	87,066	213,772	1,356,310	228,131	1,128,179	124,018
1997	4,508,406	8,813	215,186	90,175	217,882	1,381,178	235,130	1,146,048	122,775
1998	4,698,560	8,719	233,724	93,776	224,388	1,459,118	243,745	1,215,373	127,174
1999	4,879,454	8,546	251,998	96,132	228,800	1,532,155	249,871	1,282,284	131,492
2000	5,042,333	8,540	244,456	97,919	231,066	1,618,758	257,601	1,361,157	136,404
2001	5,268,039	8,752	239,614	100,442	240,948	1,731,886	273,849	1,458,037	142,795
2002	5,539,597	9,226	237,020	102,589	248,544	1,845,138	286,210	1,558,928	150,138
2003	5,868,541	9,750	242,517	106,767	260,572	1,961,090	298,500	1,662,590	160,986
2004	6,197,385	10,392	247,559	110,178	271,626	2,075,867	310,240	1,765,627	172,844
2005	6,519,001	11,001	252,933	111,927	281,828	2,183,182	320,564	1,862,618	185,049
Percent									
1996	100.0	0.2	4.5	2.0	4.9	30.8	5.2	25.6	2.8
1997	100.0	0.2	4.8	2.0	4.8	30.6	5.2	25.4	2.7
1998	100.0	0.2	5.0	2.0	4.8	31.1	5.2	25.9	2.7
1999	100.0	0.2	5.2	2.0	4.7	31.4	5.1	26.3	2.7
2000	100.0	0.2	4.8	1.9	4.6	32.1	5.1	27.0	2.7
2001	100.0	0.2	4.5	1.9	4.6	32.9	5.2	27.7	2.7
2002	100.0	0.2	4.3	1.9	4.5	33.3	5.2	28.1	2.7
2003	100.0	0.2	4.1	1.8	4.4	33.4	5.1	28.3	2.7
2004	100.0	0.2	4.0	1.8	4.4	33.5	5.0	28.5	2.8
2005	100.0	0.2	3.9	1.7	4.3	33.5	4.9	28.6	2.8

(Continued)

Disabled Workers

Table 21.
Distribution, by diagnostic group, December 1996–2005—Continued

Year	Diseases of the—								Other	Unknown ^b
	Blood and blood-forming organs	Circulatory system	Digestive system	Genitourinary system	Musculoskeletal system and connective tissue	Nervous system and sense organs	Respiratory system	Skin and subcutaneous tissue		
Number										
1996	10,539	517,503	54,585	65,425	906,882	404,618	152,217	10,818	85,115	204,769
1997	10,926	522,047	57,383	69,300	962,915	420,755	155,028	11,267	95,708	167,068
1998	11,349	526,573	61,541	74,888	1,024,053	441,016	159,869	11,826	110,377	130,169
1999	11,687	528,627	65,887	79,524	1,086,432	460,133	162,863	12,151	117,326	105,701
2000	12,070	532,998	69,735	84,687	1,152,231	479,246	166,054	12,351	113,167	82,651
2001	12,847	543,516	74,680	88,949	1,231,184	505,162	170,383	12,787	113,558	50,536
2002	13,708	558,736	80,396	93,645	1,324,762	533,774	176,941	13,429	9,447	142,104
2003	14,711	579,778	87,721	98,491	1,430,357	565,244	185,834	14,133	10,705	139,885
2004	15,596	600,144	94,566	103,427	1,540,566	596,369	194,592	14,963	12,038	136,658
2005	16,270	620,852	100,934	108,701	1,656,997	623,948	202,821	15,662	13,225	133,671
Percent										
1996	0.2	11.8	1.2	1.5	20.6	9.2	3.5	0.2	1.9	4.7
1997	0.2	11.6	1.3	1.5	21.4	9.3	3.4	0.2	2.1	3.7
1998	0.2	11.2	1.3	1.6	21.8	9.4	3.4	0.3	2.3	2.8
1999	0.2	10.8	1.4	1.6	22.3	9.4	3.3	0.2	2.4	2.2
2000	0.2	10.6	1.4	1.7	22.9	9.5	3.3	0.2	2.2	1.6
2001	0.2	10.3	1.4	1.7	23.4	9.6	3.2	0.2	2.2	1.0
2002	0.2	10.1	1.5	1.7	23.9	9.6	3.2	0.2	0.2	2.6
2003	0.3	9.9	1.5	1.7	24.4	9.6	3.2	0.2	0.2	2.4
2004	0.3	9.7	1.5	1.7	24.9	9.6	3.1	0.2	0.2	2.2
2005	0.2	9.5	1.5	1.7	25.4	9.6	3.1	0.2	0.2	2.1

SOURCES: Social Security Administration, Social Security Disability Insurance Beneficiaries, 100 percent data, from 1996 to 2000; beginning with 2001, Disabled Beneficiaries and Dependents Master Beneficiary Record file, 100 percent data.

a. AIDS and HIV records are counted in "Infectious and parasitic diseases." Before 1990, they were included in "Other."

b. Beginning with 2002 data, several ill-defined impairment codes were reclassified and added to "Unknown."

CONTACT: Kevin Kulzer (410) 965-5366 or di.asr@ssa.gov.

Table 22.
Distribution of workers under age 50, by diagnostic group, December 1996–2005

Year	Total	Congenital anomalies	Endocrine, nutritional, and metabolic diseases	Infectious and parasitic diseases ^a	Injuries	Mental disorders			Neoplasms
						Total	Retardation	Other	
Number									
1996	1,917,424	4,782	76,546	63,819	110,910	865,928	164,041	701,887	41,232
1997	1,908,103	4,570	80,950	65,212	110,461	852,279	167,052	685,227	39,783
1998	1,949,052	4,503	85,500	66,208	111,266	874,231	170,694	703,537	40,638
1999	1,986,422	4,494	89,365	66,245	111,502	891,469	172,232	719,237	41,799
2000	2,012,615	4,619	80,869	65,695	110,125	912,048	174,759	737,289	42,656
2001	2,066,094	4,883	74,292	65,047	112,969	961,757	183,934	777,823	44,537
2002	2,132,996	5,290	69,229	64,075	113,785	1,005,189	190,646	814,543	45,994
2003	2,204,785	5,696	68,422	64,376	115,634	1,043,928	196,420	847,508	48,126
2004	2,259,463	6,157	66,669	63,593	116,155	1,077,329	201,594	875,735	49,957
2005	2,299,449	6,488	64,972	61,362	115,958	1,103,111	204,911	898,200	51,549
Percent									
1996	100.0	0.2	4.0	3.3	5.8	45.2	8.6	36.6	2.2
1997	100.0	0.2	4.2	3.4	5.8	44.7	8.8	35.9	2.1
1998	100.0	0.2	4.4	3.4	5.7	44.9	8.8	36.1	2.1
1999	100.0	0.2	4.5	3.3	5.6	44.9	8.7	36.2	2.1
2000	100.0	0.2	4.0	3.3	5.5	45.3	8.7	36.6	2.1
2001	100.0	0.2	3.6	3.1	5.5	46.5	8.9	37.6	2.2
2002	100.0	0.2	3.2	3.0	5.3	47.1	8.9	38.2	2.2
2003	100.0	0.3	3.1	2.9	5.2	47.3	8.9	38.4	2.2
2004	100.0	0.3	3.0	2.8	5.1	47.7	8.9	38.8	2.2
2005	100.0	0.3	2.8	2.7	5.0	48.0	8.9	39.1	2.2

(Continued)

Disabled Workers

Table 22.
Distribution of workers under age 50, by diagnostic group, December 1996–2005—Continued

Year	Diseases of the—								Other	Unknown ^b
	Blood and blood-forming organs	Circulatory system	Digestive system	Genitourinary system	Musculoskeletal system and connective tissue	Nervous system and sense organs	Respiratory system	Skin and subcutaneous tissue		
Number										
1996	6,711	86,607	24,535	36,214	265,043	202,169	24,862	4,926	37,745	65,395
1997	6,809	85,953	25,428	37,896	271,682	204,222	24,750	5,140	43,124	49,844
1998	6,991	84,674	27,219	39,949	284,291	208,607	25,822	5,314	50,140	33,699
1999	7,103	83,736	29,109	41,571	297,185	211,731	26,226	5,467	51,848	27,572
2000	7,245	84,362	30,357	43,333	309,327	215,744	26,718	5,785	53,437	20,595
2001	7,646	85,819	31,789	44,628	322,713	221,321	27,472	5,613	44,428	11,180
2002	8,072	87,860	33,120	45,957	340,244	228,658	28,441	5,843	4,060	47,179
2003	8,513	90,085	34,722	47,143	355,306	235,860	29,996	5,966	4,496	46,516
2004	8,855	91,227	35,859	48,231	367,251	242,252	30,883	6,231	4,951	43,863
2005	8,999	92,683	36,121	49,339	378,930	246,069	31,531	6,349	5,276	40,712
Percent										
1996	0.4	4.5	1.3	1.9	13.8	10.5	1.3	0.3	2.0	3.4
1997	0.4	4.5	1.3	2.0	14.2	10.7	1.3	0.3	2.3	2.6
1998	0.4	4.3	1.4	2.0	14.6	10.7	1.3	0.3	2.6	1.7
1999	0.4	4.2	1.5	2.1	15.0	10.7	1.3	0.3	2.6	1.4
2000	0.4	4.2	1.5	2.2	15.4	10.7	1.3	0.3	2.7	1.0
2001	0.4	4.2	1.5	2.2	15.6	10.7	1.3	0.3	2.2	0.5
2002	0.4	4.1	1.6	2.2	16.0	10.7	1.3	0.3	0.2	2.2
2003	0.4	4.1	1.6	2.1	16.1	10.7	1.4	0.3	0.2	2.1
2004	0.4	4.0	1.6	2.1	16.3	10.7	1.4	0.3	0.2	1.9
2005	0.4	4.0	1.6	2.1	16.5	10.7	1.4	0.3	0.2	1.8

SOURCES: Social Security Administration, Social Security Disability Insurance Beneficiaries, 100 percent data, from 1996 to 2000; beginning with 2001, Disabled Beneficiaries and Dependents Master Beneficiary Record file, 100 percent data.

a. AIDS and HIV records are counted in "Infectious and parasitic diseases." Before 1990, they were included in "Other."

b. Beginning with 2002 data, several ill-defined impairment codes were reclassified and added to "Unknown."

CONTACT: Kevin Kulzer (410) 965-5366 or di.asr@ssa.gov.

Table 23.
Distribution of workers aged 50 or older, by diagnostic group, December 1996–2005

Year	Total	Congenital anomalies	Endocrine, nutritional, and metabolic diseases	Infectious and parasitic diseases ^a	Injuries	Mental disorders			Neoplasms
						Total	Retardation	Other	
Number									
1996	2,482,508	4,241	120,726	23,247	102,862	490,382	64,090	426,292	82,786
1997	2,600,303	4,243	134,236	24,963	107,421	528,899	68,078	460,821	82,992
1998	2,749,508	4,216	148,224	27,568	113,122	584,887	73,051	511,836	86,536
1999	2,893,032	4,052	162,633	29,887	117,298	640,686	77,639	563,047	89,693
2000	3,029,718	3,921	163,587	32,224	120,941	697,278	82,842	614,436	93,748
2001	3,201,945	3,869	165,322	35,395	127,979	770,129	89,915	680,214	98,258
2002	3,406,601	3,936	167,791	38,514	134,759	839,949	95,564	744,385	104,144
2003	3,663,756	4,054	174,095	42,391	144,938	917,162	102,080	815,082	112,860
2004	3,937,922	4,235	180,890	46,585	155,471	998,538	108,646	889,892	122,887
2005	4,219,552	4,513	187,961	50,565	165,870	1,080,071	115,653	964,418	133,500
Percent									
1996	100.0	0.2	4.9	0.9	4.1	19.8	2.6	17.2	3.3
1997	100.0	0.2	5.2	1.0	4.1	20.3	2.6	17.7	3.2
1998	100.0	0.2	5.4	1.0	4.1	21.3	2.7	18.6	3.1
1999	100.0	0.1	5.6	1.0	4.1	22.2	2.7	19.5	3.1
2000	100.0	0.1	5.4	1.1	4.0	23.0	2.7	20.3	3.1
2001	100.0	0.1	5.2	1.1	4.0	24.0	2.8	21.2	3.1
2002	100.0	0.1	4.9	1.1	4.0	24.7	2.8	21.9	3.1
2003	100.0	0.1	4.8	1.2	4.0	25.0	2.8	22.2	3.1
2004	100.0	0.1	4.6	1.2	3.9	25.4	2.8	22.6	3.1
2005	100.0	0.1	4.5	1.2	3.9	25.6	2.7	22.9	3.2

(Continued)

Disabled Workers

Table 23.
Distribution of workers aged 50 or older, by diagnostic group, December 1996–2005—Continued

Year	Diseases of the—								Other	Unknown ^b
	Blood and blood-forming organs	Circulatory system	Digestive system	Genitourinary system	Musculoskeletal system and connective tissue	Nervous system and sense organs	Respiratory system	Skin and subcutaneous tissue		
Number										
1996	3,828	430,896	30,050	29,211	641,839	202,449	127,355	5,892	47,370	139,374
1997	4,117	436,094	31,955	31,404	691,233	216,533	130,278	6,127	52,584	117,224
1998	4,358	441,899	34,322	34,939	739,762	232,409	134,047	6,512	60,237	96,470
1999	4,584	444,891	36,778	37,953	789,247	248,402	136,637	6,684	65,478	78,129
2000	4,825	448,636	39,378	41,354	842,904	263,502	139,336	6,866	69,162	62,056
2001	5,201	457,697	42,891	44,321	908,471	283,841	142,911	7,174	69,130	39,356
2002	5,636	470,876	47,276	47,688	984,518	305,116	148,500	7,586	5,387	94,925
2003	6,198	489,693	52,999	51,348	1,075,051	329,384	155,838	8,167	6,209	93,369
2004	6,741	508,917	58,707	55,196	1,173,315	354,117	163,709	8,732	7,087	92,795
2005	7,271	528,169	64,813	59,362	1,278,067	377,879	171,290	9,313	7,949	92,959
Percent										
1996	0.2	17.4	1.2	1.2	25.9	8.2	5.1	0.2	1.9	5.6
1997	0.2	16.8	1.2	1.2	26.6	8.3	5.0	0.2	2.0	4.5
1998	0.2	16.1	1.2	1.3	26.9	8.5	4.9	0.2	2.2	3.5
1999	0.2	15.4	1.3	1.3	27.3	8.6	4.7	0.2	2.3	2.7
2000	0.2	14.8	1.3	1.4	27.8	8.7	4.6	0.2	2.3	2.0
2001	0.2	14.3	1.3	1.4	28.4	8.9	4.5	0.2	2.2	1.2
2002	0.2	13.8	1.4	1.4	28.9	9.0	4.4	0.2	0.2	2.8
2003	0.2	13.4	1.4	1.4	29.3	9.0	4.3	0.2	0.2	2.5
2004	0.2	12.9	1.5	1.4	29.8	9.0	4.2	0.2	0.2	2.4
2005	0.2	12.5	1.5	1.4	30.3	9.0	4.1	0.2	0.2	2.2

SOURCES: Social Security Administration, Social Security Disability Insurance Beneficiaries, 100 percent data, from 1996 to 2000; beginning with 2001, Disabled Beneficiaries and Dependents Master Beneficiary Record file, 100 percent data.

- a. AIDS and HIV records are counted in "Infectious and parasitic diseases." Before 1990, they were included in "Other."
 b. Beginning with 2002, several ill-defined impairment codes were reclassified and added to "Unknown."

CONTACT: Kevin Kulzer (410) 965-5366 or di.asr@ssa.gov.

Table 24.
Distribution, by diagnostic group and age, December 2005

Diagnostic group	Total	Under 30	30–39	40–49	50–59	60–FRA
	<i>Number</i>					
Total	6,519,001	201,008	589,717	1,508,724	2,579,394	1,640,158
Congenital anomalies	11,001	1,597	2,240	2,651	2,897	1,616
Endocrine, nutritional, and metabolic diseases	252,933	2,913	14,200	47,859	112,637	75,324
Infectious and parasitic diseases	111,927	1,689	15,465	44,208	37,791	12,774
Injuries	281,828	11,077	31,400	73,481	103,651	62,219
Mental disorders						
Retardation	320,564	37,613	68,542	98,756	86,319	29,334
Other	1,862,618	94,002	250,608	553,590	694,105	270,313
Neoplasms	185,049	4,428	11,784	35,337	77,293	56,207
Diseases of the—						
Blood and blood-forming organs	16,270	2,044	2,885	4,070	4,798	2,473
Circulatory system	620,852	3,421	16,344	72,918	262,792	265,377
Digestive system	100,934	1,953	7,638	26,530	44,920	19,893
Genitourinary system	108,701	4,603	15,432	29,304	40,067	19,295
Musculoskeletal system and connective tissue	1,656,997	8,317	67,902	302,711	720,091	557,976
Nervous system and sense organs	623,948	22,759	67,710	155,600	240,026	137,853
Respiratory system	202,821	1,294	5,610	24,627	83,185	88,105
Skin and subcutaneous tissue	15,662	467	1,620	4,262	6,104	3,209
Other	13,225	490	1,312	3,474	5,197	2,752
Unknown	133,671	2,341	9,025	29,346	57,521	35,438
	<i>Percent</i>					
Total	100.0	100.0	100.0	100.0	100.0	100.0
Congenital anomalies	0.2	0.8	0.4	0.2	0.1	0.1
Endocrine, nutritional, and metabolic diseases	3.9	1.4	2.4	3.2	4.4	4.6
Infectious and parasitic diseases	1.7	0.8	2.6	2.9	1.5	0.8
Injuries	4.3	5.5	5.3	4.9	4.0	3.8
Mental disorders						
Retardation	4.9	18.7	11.6	6.5	3.3	1.8
Other	28.6	46.8	42.5	36.7	26.9	16.5
Neoplasms	2.8	2.2	2.0	2.3	3.0	3.4
Diseases of the—						
Blood and blood-forming organs	0.2	1.0	0.5	0.3	0.2	0.2
Circulatory system	9.5	1.7	2.8	4.8	10.2	16.2
Digestive system	1.5	1.0	1.3	1.8	1.7	1.2
Genitourinary system	1.7	2.3	2.6	1.9	1.6	1.2
Musculoskeletal system and connective tissue	25.4	4.1	11.5	20.1	27.9	34.0
Nervous system and sense organs	9.6	11.3	11.5	10.3	9.3	8.4
Respiratory system	3.1	0.6	1.0	1.6	3.2	5.4
Skin and subcutaneous tissue	0.2	0.2	0.3	0.3	0.2	0.2
Other	0.2	0.2	0.2	0.2	0.2	0.2
Unknown	2.1	1.2	1.5	1.9	2.2	2.2

SOURCE: Social Security Administration, Disabled Beneficiaries and Dependents Master Beneficiary Record file, 100 percent data.

NOTE: FRA = full retirement age.

CONTACT: Kevin Kulzer (410) 965-5366 or di.asr@ssa.gov.

Disabled Workers

Table 25.
Distribution of workers with a secondary benefit (dual entitlement), by worker's smaller primary insurance amount and sex, December 2005

Primary insurance amount (dollars)	Total		Men		Women	
	Number	Percent	Number	Percent	Number	Percent
All disabled workers	218,194	100.0	50,312	100.0	167,882	100.0
Less than 300.00	30,289	13.9	10,456	20.8	19,833	11.8
300.00–399.90	29,037	13.3	10,331	20.5	18,706	11.1
400.00–499.90	25,345	11.6	7,721	15.3	17,624	10.5
500.00–599.90	42,168	19.3	10,617	21.1	31,551	18.8
600.00–699.90	34,562	15.8	5,576	11.1	28,986	17.3
700.00–799.90	22,360	10.2	2,424	4.8	19,936	11.9
800.00–899.90	13,917	6.4	1,209	2.4	12,708	7.6
900.00–999.90	8,530	3.9	742	1.5	7,788	4.6
1,000.00–1,099.90	5,172	2.4	425	0.8	4,747	2.8
1,100.00 or more	6,814	3.1	811	1.6	6,003	3.6
Average amount (dollars)	571.50		476.10		600.10	

SOURCE: Social Security Administration, Disabled Beneficiaries and Dependents Master Beneficiary Record file, 100 percent data.

CONTACT: Kevin Kulzer (410) 965-5366 or di.asr@ssa.gov.

Table 26.
Distribution of workers with a secondary benefit (dual entitlement), by type of secondary benefit and sex, December 2005

Type of secondary benefit	Total		Men		Women	
	Number	Percent	Number	Percent	Number	Percent
All disabled workers ^a	218,194	100.0	50,312	100.0	167,882	100.0
Spouses	26,698	12.2	191	0.4	26,507	15.8
Widow(er)s	32,578	14.9	939	1.9	31,639	18.8
Disabled widow(er)s	81,079	37.2	2,779	5.5	78,300	46.6
Surviving mothers and fathers	2,003	0.9	92	0.2	1,911	1.1
Disabled adult children	75,834	34.8	46,311	92.0	29,523	17.6

SOURCE: Social Security Administration, Disabled Beneficiaries and Dependents Master Beneficiary Record file, 100 percent data.

a. Includes a few individuals who are receiving parent's benefits.

CONTACT: Kevin Kulzer (410) 965-5366 or di.asr@ssa.gov.

Disabled Workers

Table 27.
Number, by sex, state or other area, and age, December 2005

State or area	Total	Under 35	35-39	40-44	45-49	50-54	55-59	60-FRA
<i>All disabled workers</i>								
All areas	6,519,001	422,146	368,579	622,211	886,513	1,123,773	1,455,621	1,640,158
Alabama	169,574	9,712	9,386	15,874	23,556	30,422	39,134	41,490
Alaska	9,640	840	605	956	1,354	1,697	2,007	2,181
Arizona	122,207	8,548	7,106	11,499	16,464	21,022	27,191	30,377
Arkansas	104,081	6,229	5,456	9,457	13,788	17,898	23,783	27,470
California	551,529	33,299	30,760	52,480	75,469	96,716	124,340	138,465
Colorado	72,439	4,662	4,011	6,917	10,616	13,434	15,927	16,872
Connecticut	64,751	4,528	4,325	7,135	9,183	10,601	13,340	15,639
Delaware	20,676	1,288	1,229	2,180	2,995	3,677	4,432	4,875
District of Columbia	9,752	716	603	1,156	1,503	1,856	1,967	1,951
Florida	396,342	21,656	20,166	37,271	53,818	67,200	89,249	106,982
Georgia	196,010	10,761	10,193	18,225	26,226	34,044	45,504	51,057
Hawaii	18,522	1,101	988	1,787	2,519	3,244	4,229	4,654
Idaho	29,315	2,471	1,708	2,647	3,790	4,916	6,263	7,520
Illinois	221,848	17,298	13,292	21,509	30,596	37,491	47,351	54,311
Indiana	141,879	11,046	8,605	13,852	19,858	24,389	30,055	34,074
Iowa	59,475	5,177	3,658	5,738	8,100	10,035	12,447	14,320
Kansas	53,485	4,111	3,019	5,332	7,690	9,361	11,400	12,572
Kentucky	160,126	10,142	9,257	15,366	22,125	28,103	36,379	38,754
Louisiana	108,904	6,508	5,835	10,094	15,101	19,459	24,691	27,216
Maine	46,143	3,870	3,206	5,155	6,670	7,532	9,619	10,091
Maryland	90,603	6,265	5,416	9,745	12,759	15,734	19,261	21,423
Massachusetts	152,111	12,952	11,098	17,599	22,290	25,376	29,643	33,153
Michigan	239,212	17,318	13,591	21,521	32,424	42,415	53,572	58,371
Minnesota	89,819	9,053	5,622	9,263	12,614	14,812	17,934	20,521
Mississippi	106,630	6,307	6,067	9,925	14,798	19,213	24,069	26,251
Missouri	161,227	10,747	9,099	16,224	22,884	27,903	34,194	40,176
Montana	20,527	1,305	962	1,773	2,731	3,523	4,695	5,538
Nebraska	32,812	2,697	1,944	3,282	4,543	5,487	6,823	8,036
Nevada	45,182	2,518	2,409	3,921	5,778	7,352	10,469	12,735
New Hampshire	32,998	3,026	2,448	3,902	4,807	5,347	6,404	7,064
New Jersey	153,611	8,806	8,893	15,279	20,625	25,163	33,852	40,993
New Mexico	45,256	3,231	2,414	4,222	6,013	7,868	10,710	10,798
New York	403,614	22,357	23,198	40,388	54,218	68,091	90,748	104,614
North Carolina	249,640	13,514	13,135	22,684	32,808	42,699	58,650	66,150
North Dakota	10,994	920	570	1,036	1,517	1,849	2,309	2,793
Ohio	241,960	20,423	14,835	23,005	33,053	40,764	52,207	57,673
Oklahoma	90,867	5,732	4,671	8,079	11,998	15,488	20,826	24,073
Oregon	75,363	4,599	3,983	6,325	9,306	13,124	17,871	20,155
Pennsylvania	292,767	20,850	17,825	28,542	39,892	49,934	63,703	72,021
Rhode Island	28,843	2,075	1,812	2,912	3,997	4,982	6,237	6,828
South Carolina	130,973	6,466	6,777	11,463	17,029	23,115	30,974	35,149
South Dakota	14,421	1,199	759	1,341	1,995	2,435	3,081	3,611
Tennessee	181,756	10,327	10,399	17,411	24,515	31,627	41,220	46,257
Texas	383,330	25,057	20,838	36,162	52,433	66,629	85,973	96,238
Utah	29,737	3,022	1,831	2,878	4,043	4,834	6,086	7,043

(Continued)

Table 27.
Number, by sex, state or other area, and age, December 2005—Continued

State or area	Total	Under 35	35-39	40-44	45-49	50-54	55-59	60-FRA
<i>All disabled workers (cont.)</i>								
Vermont	15,845	1,376	1,072	1,742	2,192	2,704	3,258	3,501
Virginia	165,829	10,322	9,476	16,003	22,604	28,776	37,547	41,101
Washington	123,137	8,566	7,118	11,442	16,312	21,014	28,004	30,681
West Virginia	79,483	3,947	3,916	6,443	10,099	14,289	20,105	20,684
Wisconsin	110,319	9,427	6,784	11,103	14,851	18,701	23,295	26,158
Wyoming	9,606	726	541	887	1,288	1,645	2,174	2,345
Outlying areas								
American Samoa	1,085	a	a	43	111	195	346	356
Guam	1,140	83	87	103	166	181	287	233
Northern Mariana								
Islands	184	a	a	26	27	32	33	25
Puerto Rico	137,256	2,673	5,104	10,032	16,987	25,227	36,281	40,952
Virgin Islands	1,602	68	72	131	163	250	373	545
Foreign countries	12,564	205	354	744	1,222	1,898	3,099	5,042
<i>Men</i>								
All areas	3,517,269	227,853	194,960	330,915	474,249	596,710	788,317	904,265
Alabama	89,859	5,191	4,787	8,262	12,400	15,759	20,686	22,774
Alaska	5,394	509	340	520	715	911	1,157	1,242
Arizona	64,498	4,504	3,680	5,920	8,398	10,796	14,685	16,515
Arkansas	56,893	3,351	2,898	5,086	7,409	9,752	13,135	15,262
California	296,988	18,615	17,008	28,810	40,778	51,010	66,096	74,671
Colorado	38,015	2,601	2,061	3,552	5,552	6,938	8,430	8,881
Connecticut	33,947	2,404	2,199	3,665	4,729	5,464	7,049	8,437
Delaware	10,240	657	585	1,037	1,472	1,779	2,178	2,532
District of Columbia	5,239	382	344	667	852	1,001	1,031	962
Florida	213,075	11,887	10,614	20,080	28,761	35,415	47,749	58,569
Georgia	102,499	5,881	5,473	9,673	13,769	17,354	23,564	26,785
Hawaii	10,981	640	582	1,083	1,512	1,915	2,498	2,751
Idaho	16,418	1,342	949	1,437	2,000	2,676	3,545	4,469
Illinois	118,499	9,176	6,861	11,495	16,158	19,693	25,338	29,778
Indiana	74,802	5,807	4,447	7,246	10,326	12,677	15,806	18,493
Iowa	31,900	2,856	1,961	3,010	4,271	5,309	6,730	7,763
Kansas	27,627	2,198	1,517	2,666	3,874	4,752	5,964	6,656
Kentucky	93,179	5,531	5,199	8,733	12,739	16,517	21,335	23,125
Louisiana	68,185	3,790	3,533	6,266	9,493	12,148	15,654	17,301
Maine	25,951	2,098	1,719	2,824	3,651	4,172	5,663	5,824
Maryland	46,824	3,358	2,790	5,019	6,667	7,842	9,862	11,286
Massachusetts	78,958	6,466	5,446	8,961	11,681	13,293	15,513	17,598
Michigan	127,524	9,166	7,142	11,368	17,330	22,331	28,247	31,940
Minnesota	47,866	4,732	2,915	4,686	6,494	7,744	9,901	11,394
Mississippi	57,228	3,452	3,126	5,208	7,871	10,208	13,075	14,288
Missouri	85,492	5,768	4,756	8,554	12,145	14,650	17,973	21,646
Montana	11,824	749	501	993	1,513	1,974	2,816	3,278
Nebraska	16,797	1,433	947	1,556	2,250	2,742	3,583	4,286
Nevada	23,809	1,318	1,218	2,031	2,949	3,744	5,593	6,956
New Hampshire	16,452	1,426	1,166	1,798	2,317	2,644	3,351	3,750

(Continued)

Disabled Workers

Table 27.
Number, by sex, state or other area, and age, December 2005—Continued

State or area	Total	Under 35	35-39	40-44	45-49	50-54	55-59	60-FRA
<i>Men (cont.)</i>								
New Jersey	78,749	4,591	4,298	7,593	10,568	12,674	17,451	21,574
New Mexico	26,550	1,888	1,398	2,392	3,451	4,463	6,409	6,549
New York	217,307	12,118	12,240	21,434	29,456	36,350	49,152	56,557
North Carolina	127,022	7,441	6,717	11,578	16,513	21,202	29,693	33,878
North Dakota	6,221	531	298	556	811	1,020	1,333	1,672
Ohio	133,509	10,996	7,976	12,394	18,077	22,225	29,010	32,831
Oklahoma	49,317	3,161	2,587	4,429	6,459	8,169	11,233	13,279
Oregon	41,684	2,658	2,252	3,436	4,881	7,027	9,962	11,468
Pennsylvania	158,625	10,829	9,351	14,953	21,405	26,869	34,690	40,528
Rhode Island	14,904	1,072	933	1,480	2,078	2,549	3,298	3,494
South Carolina	67,309	3,509	3,390	5,772	8,681	11,548	16,017	18,392
South Dakota	7,892	630	383	687	1,055	1,325	1,745	2,067
Tennessee	95,256	5,357	5,332	8,947	12,580	16,217	21,857	24,966
Texas	211,926	13,658	11,350	19,690	28,667	35,980	47,556	55,025
Utah	15,918	1,652	990	1,508	2,120	2,562	3,221	3,865
Vermont	8,670	740	562	903	1,152	1,467	1,784	2,062
Virginia	87,906	5,415	4,784	8,313	11,889	15,192	19,948	22,365
Washington	66,878	4,784	3,875	6,146	8,848	10,965	15,195	17,065
West Virginia	52,067	2,301	2,435	4,016	6,471	9,397	13,525	13,922
Wisconsin	58,769	4,820	3,464	5,657	7,693	9,798	12,681	14,656
Wyoming	5,363	406	278	487	703	915	1,192	1,382
Outlying areas								
American Samoa	634	a	a	28	75	112	175	218
Guam	724	52	63	59	118	107	190	135
Northern Mariana Islands								
	119	a	a	15	19	16	25	16
Puerto Rico	77,083	1,773	2,931	5,680	9,410	13,837	20,289	23,163
Virgin Islands	885	45	39	74	95	120	191	321
Foreign countries	9,019	126	228	482	898	1,394	2,288	3,603
<i>Women</i>								
All areas	3,001,732	194,293	173,619	291,296	412,264	527,063	667,304	735,893
Alabama	79,715	4,521	4,599	7,612	11,156	14,663	18,448	18,716
Alaska	4,246	331	265	436	639	786	850	939
Arizona	57,709	4,044	3,426	5,579	8,066	10,226	12,506	13,862
Arkansas	47,188	2,878	2,558	4,371	6,379	8,146	10,648	12,208
California	254,541	14,684	13,752	23,670	34,691	45,706	58,244	63,794
Colorado	34,424	2,061	1,950	3,365	5,064	6,496	7,497	7,991
Connecticut	30,804	2,124	2,126	3,470	4,454	5,137	6,291	7,202
Delaware	10,436	631	644	1,143	1,523	1,898	2,254	2,343
District of Columbia	4,513	334	259	489	651	855	936	989
Florida	183,267	9,769	9,552	17,191	25,057	31,785	41,500	48,413
Georgia	93,511	4,880	4,720	8,552	12,457	16,690	21,940	24,272
Hawaii	7,541	461	406	704	1,007	1,329	1,731	1,903
Idaho	12,897	1,129	759	1,210	1,790	2,240	2,718	3,051
Illinois	103,349	8,122	6,431	10,014	14,438	17,798	22,013	24,533
Indiana	67,077	5,239	4,158	6,606	9,532	11,712	14,249	15,581

(Continued)

Table 27.
Number, by sex, state or other area, and age, December 2005—Continued

State or area	Total	Under 35	35-39	40-44	45-49	50-54	55-59	60-FRA
<i>Women (cont.)</i>								
Iowa	27,575	2,321	1,697	2,728	3,829	4,726	5,717	6,557
Kansas	25,858	1,913	1,502	2,666	3,816	4,609	5,436	5,916
Kentucky	66,947	4,611	4,058	6,633	9,386	11,586	15,044	15,629
Louisiana	40,719	2,718	2,302	3,828	5,608	7,311	9,037	9,915
Maine	20,192	1,772	1,487	2,331	3,019	3,360	3,956	4,267
Maryland	43,779	2,907	2,626	4,726	6,092	7,892	9,399	10,137
Massachusetts	73,153	6,486	5,652	8,638	10,609	12,083	14,130	15,555
Michigan	111,688	8,152	6,449	10,153	15,094	20,084	25,325	26,431
Minnesota	41,953	4,321	2,707	4,577	6,120	7,068	8,033	9,127
Mississippi	49,402	2,855	2,941	4,717	6,927	9,005	10,994	11,963
Missouri	75,735	4,979	4,343	7,670	10,739	13,253	16,221	18,530
Montana	8,703	556	461	780	1,218	1,549	1,879	2,260
Nebraska	16,015	1,264	997	1,726	2,293	2,745	3,240	3,750
Nevada	21,373	1,200	1,191	1,890	2,829	3,608	4,876	5,779
New Hampshire	16,546	1,600	1,282	2,104	2,490	2,703	3,053	3,314
New Jersey	74,862	4,215	4,595	7,686	10,057	12,489	16,401	19,419
New Mexico	18,706	1,343	1,016	1,830	2,562	3,405	4,301	4,249
New York	186,307	10,239	10,958	18,954	24,762	31,741	41,596	48,057
North Carolina	122,618	6,073	6,418	11,106	16,295	21,497	28,957	32,272
North Dakota	4,773	389	272	480	706	829	976	1,121
Ohio	108,451	9,427	6,859	10,611	14,976	18,539	23,197	24,842
Oklahoma	41,550	2,571	2,084	3,650	5,539	7,319	9,593	10,794
Oregon	33,679	1,941	1,731	2,889	4,425	6,097	7,909	8,687
Pennsylvania	134,142	10,021	8,474	13,589	18,487	23,065	29,013	31,493
Rhode Island	13,939	1,003	879	1,432	1,919	2,433	2,939	3,334
South Carolina	63,664	2,957	3,387	5,691	8,348	11,567	14,957	16,757
South Dakota	6,529	569	376	654	940	1,110	1,336	1,544
Tennessee	86,500	4,970	5,067	8,464	11,935	15,410	19,363	21,291
Texas	171,404	11,399	9,488	16,472	23,766	30,649	38,417	41,213
Utah	13,819	1,370	841	1,370	1,923	2,272	2,865	3,178
Vermont	7,175	636	510	839	1,040	1,237	1,474	1,439
Virginia	77,923	4,907	4,692	7,690	10,715	13,584	17,599	18,736
Washington	56,259	3,782	3,243	5,296	7,464	10,049	12,809	13,616
West Virginia	27,416	1,646	1,481	2,427	3,628	4,892	6,580	6,762
Wisconsin	51,550	4,607	3,320	5,446	7,158	8,903	10,614	11,502
Wyoming	4,243	320	263	400	585	730	982	963
Outlying areas								
American Samoa	451	a	a	15	36	83	171	138
Guam	416	31	24	44	48	74	97	98
Northern Mariana Islands	65	a	a	11	8	16	8	9
Puerto Rico	60,173	900	2,173	4,352	7,577	11,390	15,992	17,789
Virgin Islands	717	23	33	57	68	130	182	224
Foreign countries	3,545	79	126	262	324	504	811	1,439

SOURCE: Social Security Administration, Disabled Beneficiaries and Dependents Master Beneficiary Record file, 100 percent data.

NOTE: FRA = full retirement age.

a. Data not shown to avoid disclosure of information for particular individuals.

CONTACT: Kevin Kulzer (410) 965-5366 or di.asr@ssa.gov.

Disabled-Worker Families

Table 28.
Number and average monthly family benefit, by selected family composition,
December 1960–2005, selected years

Year	Worker only			Worker, spouse, and—		Worker and aged spouse ^a
	All	Men	Women	1 child	2 or more children	
<i>Number (thousands)</i>						
1960	357	261	96	22	32	22
1965	714	481	232	54	109	30
1970	1,054	680	374	77	164	43
1975	1,750	1,080	671	137	250	66
1980	2,061	1,257	804	154	228	80
1981	--	--	--	--	--	--
1982	1,969	1,208	760	124	163	78
1983	1,961	1,215	746	85	143	80
1984	1,993	1,241	752	83	140	76
1985	2,039	1,267	772	84	140	76
1986	2,096	1,301	795	82	136	74
1987	2,154	1,338	816	79	132	74
1988	2,194	1,353	841	77	125	71
1989	2,262	1,390	872	75	120	67
1990	2,370	1,448	922	75	118	63
1991	2,523	1,529	994	76	119	61
1992	2,738	1,643	1,094	78	125	61
1993	2,935	1,743	1,192	78	127	59
1994	3,121	1,830	1,292	76	128	57
1995	3,305	1,909	1,396	75	124	55
1996	3,473	1,973	1,500	61	104	53
1997	3,593	2,006	1,588	57	91	53
1998	3,769	2,074	1,695	52	80	53
1999	3,924	2,131	1,793	49	72	52
2000	4,080	2,191	1,890	45	65	50
2001	4,260	2,289	1,970	68	92	57
2002	4,487	2,392	2,095	64	86	56
2003	4,769	2,525	2,244	57	82	60
2004	5,068	2,665	2,403	55	78	65
2005	5,357	2,797	2,561	53	74	73

(Continued)

Table 28.
Number and average monthly family benefit, by selected family composition,
December 1960–2005, selected years—Continued

Year	Worker only			Worker, spouse, and—		Worker and aged spouse ^a
	All	Men	Women	1 child	2 or more children	
<i>Average monthly family benefit (dollars)</i>						
1960	87.90	91.90	76.90	184.70	192.20	135.50
1965	95.40	100.70	85.00	201.00	216.30	145.90
1970	128.10	136.30	113.10	264.10	273.20	199.20
1975	218.90	240.00	185.00	441.00	454.00	344.00
1980	355.40	396.20	291.70	727.00	746.10	573.00
1981	--	--	--	--	--	--
1982	424.40	474.20	344.70	847.40	858.20	690.70
1983	439.40	490.90	355.40	867.90	881.80	716.20
1984	454.00	507.60	365.70	881.50	885.50	740.40
1985	466.90	523.10	374.60	898.10	895.20	765.00
1986	470.70	527.80	377.40	896.90	888.30	773.30
1987	491.60	552.00	392.60	929.40	918.30	815.50
1988	512.20	576.10	409.50	960.20	938.40	855.40
1989	539.30	607.10	431.20	1,009.40	971.90	903.70
1990	570.40	642.80	456.80	1,062.10	1,016.00	960.80
1991	592.30	668.40	475.50	1,098.00	1,043.30	1,004.70
1992	609.50	688.70	490.70	1,122.10	1,057.40	1,045.00
1993	625.50	707.20	506.00	1,143.00	1,074.20	1,078.20
1994	646.20	731.80	525.00	1,177.60	1,100.00	1,118.60
1995	667.60	757.40	544.80	1,205.50	1,130.90	1,159.90
1996	690.60	785.30	566.00	1,245.90	1,148.50	1,200.60
1997	708.00	806.60	583.60	1,280.20	1,165.90	1,238.50
1998	720.00	820.20	597.40	1,300.40	1,189.40	1,261.90
1999	741.20	844.50	618.50	1,344.90	1,224.20	1,295.30
2000	773.60	880.70	649.40	1,394.20	1,274.30	1,355.50
2001	807.40	914.40	683.10	1,413.50	1,298.50	1,393.50
2002	827.30	935.80	703.50	1,445.10	1,331.70	1,431.50
2003	854.80	965.90	729.70	1,495.80	1,373.30	1,486.80
2004	887.30	1,001.60	760.60	1,554.20	1,426.80	1,546.10
2005	930.80	1,049.40	801.30	1,627.90	1,497.50	1,632.50

SOURCES: Social Security Administration. For years before 2001, *Annual Statistical Supplement to the Social Security Bulletin*, based on the Master Beneficiary Record (from 1960 to 1984, various sampling rates; from 1985 to 2000, 10 percent sample); beginning with 2001, Disabled Beneficiaries and Dependents Master Beneficiary Record file, 100 percent data.

NOTES: A "family" means beneficiaries entitled on one worker's account.

Data include beneficiaries whose benefits are being withheld.

-- = not available.

a. Spouse's entitlement based on age.

CONTACT: Kevin Kulzer (410) 965-5366 or di.asr@ssa.gov.

Disabled-Worker Families

Table 29.
Number, average primary insurance amount, and average monthly family benefit, by family composition, December 2005

Family composition	Number of families	Number of beneficiaries	Average primary insurance amount (dollars)	Average monthly family benefit (dollars)	Percentage of families receiving maximum family benefit ^a
Worker only					
Men	2,796,906	2,796,906	1,055.09	1,049.40	9.7
Women	2,560,575	2,560,575	802.09	801.30	21.3
Worker with children					
By sex of worker					
Men	614,832	1,570,183	1,025.52	1,458.20	82.2
Women	467,011	1,176,850	827.37	1,134.40	90.2
By number of children					
1 child	666,443	1,332,886	948.16	1,325.60	85.3
2 children	292,780	878,340	939.50	1,327.40	87.5
3 or more children	122,620	535,807	896.72	1,257.80	82.7
Worker with—					
Spouse aged 62 or older ^b	72,893	146,120	1,340.30	1,632.50	7.5
Spouse aged 62 or older and 1 or more children	2,477	7,951	1,218.70	1,936.60	69.5
Spouse and 1 child	50,796	152,476	1,073.73	1,615.60	92.2
Spouse and 2 children	44,184	176,794	1,036.87	1,537.00	90.4
Spouse and 3 or more children	29,325	162,057	989.33	1,431.40	81.6

SOURCE: Social Security Administration, Disabled Beneficiaries and Dependents Master Beneficiary Record file, 100 percent data.

NOTES: A "family" means beneficiaries entitled on one worker's account.

Data include beneficiaries whose benefits are being withheld.

a. Includes families and worker-only beneficiaries for whom the primary insurance amount is equal to the family maximum amount.

b. If the spouse is also entitled to a retired-worker benefit, only the benefit amount received as a spouse is included.

CONTACT: Kevin Kulzer (410) 965-5366 or di.asr@ssa.gov.

Table 30.
Distribution, by family composition and age of worker, December 2005

Family composition	Total, all ages	Under 30	30-34	35-39	40-44	45-49	50-54	55-59	60-FRA
Number									
Worker only	5,357,481	165,735	137,906	206,115	385,966	656,223	958,602	1,337,824	1,509,110
Worker with—									
Spouse									
Aged 62 or older ^a	75,370	0	5	21	63	386	1,706	8,709	64,480
Child in care	124,305	2,689	7,137	15,718	24,107	25,917	21,250	16,300	11,187
Children									
1 child	666,443	23,781	36,471	69,991	126,952	148,814	120,137	86,001	54,296
2 children	292,780	12,139	29,653	58,587	74,708	58,132	32,171	17,969	9,421
3 or more children	122,620	6,042	18,974	32,042	30,256	18,547	8,882	5,081	2,796
Families receiving maximum benefit ^b	1,861,744	136,449	136,629	218,490	314,358	323,527	270,054	242,618	219,619
Percent									
Worker only	100.0	3.1	2.6	3.8	7.2	12.2	17.9	25.0	28.2
Worker with—									
Spouse									
Aged 62 or older ^a	100.0	0	c	c	0.1	0.5	2.3	11.6	85.6
Child in care	100.0	2.2	5.7	12.6	19.4	20.8	17.1	13.1	9.0
Children									
1 child	100.0	3.6	5.5	10.5	19.0	22.3	18.0	12.9	8.1
2 children	100.0	4.1	10.1	20.0	25.5	19.9	11.0	6.1	3.2
3 or more children	100.0	4.9	15.5	26.1	24.7	15.1	7.2	4.1	2.3
Families receiving maximum benefit ^b	28.0	64.9	59.4	57.1	49.0	35.6	23.6	16.5	13.3

SOURCE: Social Security Administration, Disabled Beneficiaries and Dependents Master Beneficiary Record file, 100 percent data.

NOTES: A "family" means beneficiaries entitled on one worker's account.

Data include beneficiaries whose benefits are being withheld.

FRA = full retirement age.

a. Includes spouses aged 62 or older with children.

b. Includes families and worker-only beneficiaries for whom the primary insurance amount is equal to the family maximum amount.

c. Less than 0.05 percent.

CONTACT: Kevin Kulzer (410) 965-5366 or di.asr@ssa.gov.