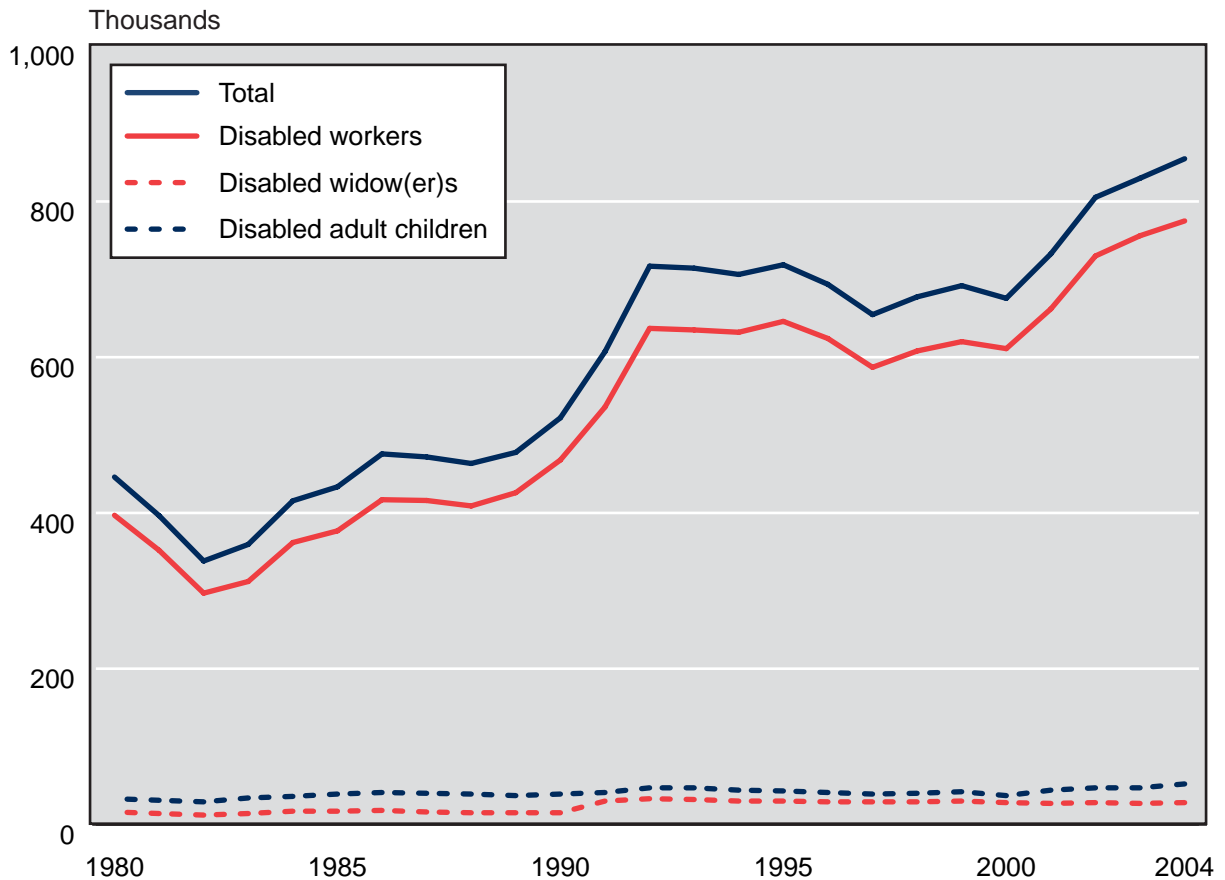


**Chart 7.**  
**Social Security disability awards, 1980–2004**

The total number of awards decreased from 1980 through 1982, started to rise in 1983, and began to increase more rapidly in 1990. Awards for disabled-worker benefits have been most pronounced and drive the overall pattern shown in the total line. They increased from a low of 297,131 in 1982 to 636,637 in 1992, were relatively flat from 1992 through 2000, and started to increase again in 2001. There were 775,244 worker awards in 2004. Other awards have risen at a much slower rate. Awards to disabled adult children have gradually increased from 33,470 in 1980 to 51,833 in 2004. Awards to disabled widow(er)s have risen from just over 16,000 in 1980 to 27,744 in 2004.



SOURCE: Table 31.

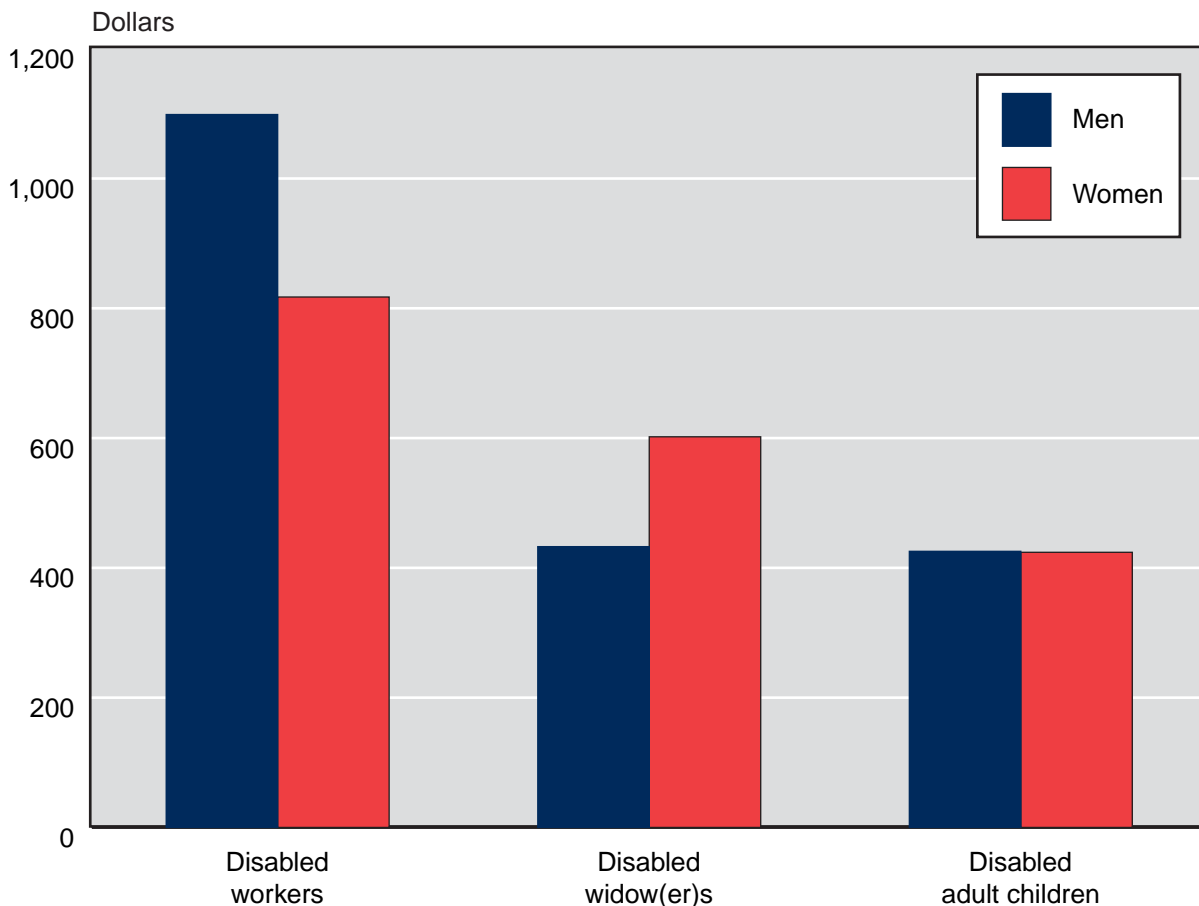
## Benefits Awarded, Withheld, and Terminated

**Chart 8.**  
**Average monthly benefit awards, by sex, 2004**

Average monthly benefits for new awards tend to be higher than those paid to beneficiaries who are already on the rolls (see Chart 5). The exception is payments to newly awarded adult children, whose benefits are slightly lower than those paid to adult children who are already on the rolls.

The average monthly benefit awarded to disabled workers is higher than that awarded to disabled widow(er)s or disabled adult children. The reason for the difference is that disabled workers receive 100 percent of the primary insurance amount, compared with 71.5 percent for disabled widow(er)s and 50 percent for disabled adult children (if the worker is disabled or retired) or 75 percent (if the worker is deceased).

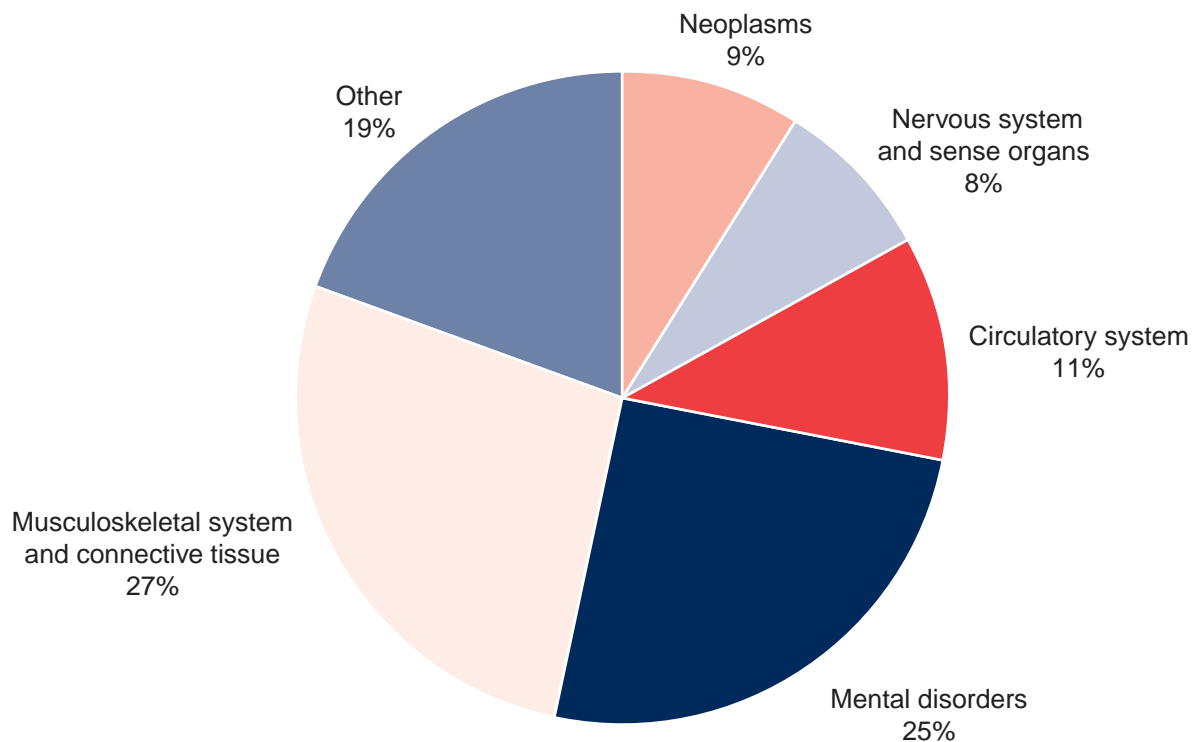
Because men have traditionally had higher earnings than women, their monthly benefit is higher. This is most obvious in the disabled-worker group. Benefits for disabled widow(er)s and disabled adult children are dependents' benefits, so their monthly benefit is a function of the worker's earnings. Therefore, a disabled widow's average benefit tends to be higher than that of a disabled widower because a male worker's earnings are higher than a female worker's. Benefit amounts are about the same for men and women in the disabled adult children group.



SOURCE: Table 32.

**Chart 9.**  
**Disabled-worker awards, by selected diagnostic group, 2004**

In 2004, 775,244 disabled workers were awarded benefits. The primary impairment group was diseases of the musculoskeletal system and connective tissue (27.1 percent), 24.9 percent had a mental disorder, 11.0 percent had circulatory problems, 9.5 percent had neoplasms, 8.3 percent had a disease of the nervous system and sense organs, and 19.1 percent had other impairments.



SOURCE: Table 33.

NOTE: Percentages do not add to 100 because of rounding.

## Awards to Disabled Beneficiaries and Nondisabled Dependents

**Table 31.**  
**Number, selected years 1960–2004**

Year	Total	Workers and nondisabled dependents				Widow(er)s	Adult children of—		
		Workers	Spouses	Children under age 18	Students aged 18–19		Disabled workers	Retired workers	Deceased workers
1960	388,861	207,805	54,187	102,516	...	...	1,794	12,740	9,819
1965	538,983	253,499	69,183	175,109	19,794	...	2,713	10,017	8,668
1970	799,616	350,384	96,304	241,627	71,145	15,609	3,774	11,348	9,425
1975	1,305,345	592,049	148,741	391,284	117,043	23,521	6,889	14,636	11,182
1980	933,597	396,559	108,500	235,079	143,935	16,054	6,194	16,650	10,626
1981	826,340	351,847	95,575	199,829	134,390	14,154	5,435	15,365	9,745
1982	672,333	297,131	77,835	153,205	103,015	12,440	4,250	14,772	9,685
1983	661,467	311,549	80,079	152,954	68,834	14,412	5,107	17,309	11,223
1984	730,135	361,998	81,834	172,721	59,990	17,165	5,541	18,330	12,556
1985	763,363	377,371	83,511	190,204	56,108	17,086	6,713	19,661	12,709
1986	809,424	416,865	82,435	198,192	52,989	18,418	6,986	20,295	13,244
1987	799,180	415,848	77,316	195,030	54,925	16,396	6,787	20,761	12,117
1988	795,690	409,490	73,790	196,655	61,725	15,328	6,646	20,544	11,512
1989	801,893	425,582	69,113	197,950	57,079	15,168	6,358	19,668	10,975
1990	868,793	467,977	69,667	218,059	58,894	15,424	6,633	20,862	11,277
1991	990,500	536,434	72,754	250,287	60,349	29,590	7,552	21,850	11,684
1992	1,167,001	636,637	78,083	306,002	66,035	33,235	9,548	23,615	13,846
1993	1,177,268	635,238	74,605	317,263	71,081	31,835	10,254	23,173	13,819
1994	1,177,236	631,870	69,549	327,067	74,364	29,903	9,774	22,119	12,590
1995	1,173,317	645,832	63,097	315,587	75,929	29,597	9,779	21,566	11,930
1996	1,139,054	624,335	57,528	311,228	76,769	28,611	9,353	20,169	11,061
1997	1,059,556	587,417	50,818	278,040	76,034	28,546	8,474	19,611	10,616
1998	1,087,352	608,131	47,550	279,764	82,567	29,399	9,095	19,932	10,914
1999	1,106,343	620,488	46,164	283,768	84,525	29,650	9,851	20,467	11,430
2000	1,051,900	610,700	38,500	263,200	74,600	27,600	7,000	21,100	9,200
2001	1,118,300	661,900	41,100	268,800	75,700	26,500	9,800	22,300	12,200
2002	1,219,670	730,383	43,301	293,131	77,927	28,339	8,507	22,798	15,284
2003	1,259,672	755,706	44,638	302,756	82,447	27,324	9,740	21,836	15,225
2004	1,311,031	775,244	45,649	313,640	96,871	27,744	13,301	22,127	16,455

SOURCES: Social Security Administration. For years before 2000, *Annual Statistical Supplement to the Social Security Bulletin*, based on the Master Beneficiary Record, various sampling rates; from 2000 to 2001, Annual Award and Termination Transaction file, 1 percent sample; data after 2001 are 100 percent data.

NOTES: Data exclude closed period awards in 2002 and 2003 and expedited reinstatement cases since 2002.

... = not applicable.

CONTACT: Carolyn A. Harrison (410) 965-5522 or di.asr@ssa.gov.

**Awards to Disabled Beneficiaries and Nondisabled Dependents**

**Table 32.**  
**Average monthly benefit, by basis of entitlement, age, and sex, 2004**

Basis of entitlement and age	Total		Male		Female	
	Number	Average monthly benefit <sup>a</sup> (dollars)	Number	Average monthly benefit <sup>a</sup> (dollars)	Number	Average monthly benefit <sup>a</sup> (dollars)
<b>Workers</b>						
Total	775,244	968.50	416,560	1,098.60	358,684	817.40
Under 25	23,028	490.60	13,217	500.50	9,811	477.30
25–29	28,739	652.50	14,979	670.20	13,760	633.20
30–34	37,877	750.90	19,038	785.50	18,839	715.90
35–39	53,209	816.70	27,136	868.00	26,073	763.30
40–44	80,324	879.40	40,830	960.20	39,494	795.80
45–49	103,685	946.50	53,347	1,057.10	50,338	829.20
50–54	140,414	1,018.50	73,770	1,160.10	66,644	861.90
55–59	175,916	1,083.60	97,336	1,257.20	78,580	868.50
60 or older	132,052	1,109.20	76,907	1,286.40	55,145	862.00
<b>Spouses of disabled workers</b>						
Total	45,649	243.70	2,364	169.20	43,285	247.70
Entitlement based on care						
of children	19,049	181.80	1,033	134.40	18,016	184.60
Under 30	2,419	118.40	80	85.00	2,339	119.50
30–34	2,910	137.50	138	115.40	2,772	138.60
35–39	3,824	161.80	175	126.90	3,649	163.50
40–44	4,077	192.00	238	135.90	3,839	195.50
45–49	3,123	220.90	194	142.60	2,929	226.10
50–54	1,698	243.80	112	148.50	1,586	250.60
55 or older	998	272.60	96	179.30	902	282.50
Entitlement based on age						
62–64	26,600	288.00	1,331	196.30	25,269	292.80
65 or older	22,363	281.40	663	169.60	21,700	284.80
	4,237	322.70	668	222.90	3,569	341.30
<b>Children of disabled workers</b>						
Total	423,812	257.90	220,767	260.10	203,045	255.50
Under age 18						
Under 5	313,640	228.30	159,612	228.10	154,028	228.60
5–9	54,603	183.40	27,920	183.40	26,683	183.40
10–14	69,510	197.00	35,373	196.50	34,137	197.60
15–17	104,455	228.20	53,092	228.70	51,363	227.70
18–19	85,072	282.90	43,227	282.20	41,845	283.60
Students aged 18–19	96,871	348.50	53,500	350.70	43,371	345.90
Disabled aged 18 or older	13,301	294.60	7,655	294.60	5,646	294.70
<b>Widow(er)s</b>						
Total	27,744	593.20	1,451	432.70	26,293	602.00
50–54	10,594	587.60	567	423.20	10,027	596.90
55–59	14,646	598.50	759	435.10	13,887	607.40
60 or older	2,504	585.50	125	460.50	2,379	592.00

-----  
(Continued)

**Awards to Disabled Beneficiaries and Nondisabled Dependents**

**Table 32.**  
**Average monthly benefit, by basis of entitlement, age, and sex, 2004—Continued**

Basis of entitlement and age	Total		Male		Female	
	Number	Average monthly benefit <sup>a</sup> (dollars)	Number	Average monthly benefit <sup>a</sup> (dollars)	Number	Average monthly benefit <sup>a</sup> (dollars)
<b>Adult children</b>						
Total	51,883	424.90	29,598	425.50	22,285	424.00
Children of—						
Disabled workers	13,301	294.60	7,655	294.60	5,646	294.70
Retired workers	22,127	401.60	12,553	400.30	9,574	403.30
Deceased workers	16,455	561.50	9,390	566.00	7,065	555.50
Under 25	21,350	425.40	12,387	431.10	8,963	417.60
25–29	6,883	433.50	3,837	440.70	3,046	424.50
30–34	7,525	437.50	4,192	431.40	3,333	445.10
35–39	7,660	432.00	4,426	431.90	3,234	432.00
40–44	5,495	402.40	3,151	392.80	2,344	415.30
45–49	1,789	379.90	963	364.00	826	398.40
50–54	675	395.40	370	378.20	305	416.20
55–59	303	417.80	174	428.80	129	402.90
60–64	123	429.50	62	347.80	61	512.50
65 or older	80	489.40	36	519.70	44	464.60

SOURCE: Social Security Administration, Annual Award and Termination Transaction file, 100 percent data.

NOTE: Data exclude expedited reinstatement cases.

a. Benefits awarded before the December cost-of-living increase are converted to the December rates before averages are computed.

CONTACT: Carolyn A. Harrison (410) 965-5522 or di.asr@ssa.gov.

**Table 33.**  
**Distribution, by sex and diagnostic group, 2004**

Diagnostic group	Total		Workers		Widow(er)s		Adult children	
	Number	Percent	Number	Percent	Number	Percent	Number	Percent
<b>All disabled beneficiaries</b>								
Total	854,871	100.0	775,244	100.0	27,744	100.0	51,883	100.0
Congenital anomalies	2,236	0.3	1,166	0.2	41	0.1	1,029	2.0
Endocrine, nutritional, and metabolic diseases	26,588	3.1	24,341	3.1	1,893	6.8	354	0.7
Infectious and parasitic diseases	10,926	1.3	10,510	1.4	233	0.8	183	0.4
Injuries	31,443	3.7	29,580	3.8	735	2.6	1,128	2.2
Mental disorders								
Retardation	45,941	5.4	20,479	2.6	1,035	3.7	24,427	47.1
Other	192,846	22.6	172,353	22.2	6,306	22.7	14,187	27.3
Neoplasms	74,952	8.8	73,637	9.5	1,016	3.7	299	0.6
Diseases of the—								
Blood and blood-forming organs	2,782	0.3	2,479	0.3	55	0.2	248	0.5
Circulatory system	88,579	10.4	85,449	11.0	2,787	10.0	343	0.7
Digestive system	18,600	2.2	18,045	2.3	433	1.6	122	0.2
Genitourinary system	17,505	2.0	16,869	2.2	350	1.3	286	0.6
Musculoskeletal system and connective tissue	219,133	25.6	210,315	27.1	8,198	29.5	620	1.2
Nervous system and sense organs	73,057	8.5	64,566	8.3	2,032	7.3	6,459	12.4
Respiratory system	34,252	4.0	32,562	4.2	1,559	5.6	131	0.3
Skin and subcutaneous tissue	1,790	0.2	1,709	0.2	50	0.2	31	0.1
Other	2,146	0.3	1,909	0.2	47	0.2	190	0.4
Unknown	12,095	1.4	9,275	1.2	974	3.5	1,846	3.6
<b>Men</b>								
Subtotal	447,609	100.0	416,560	100.0	1,451	100.0	29,598	100.0
Congenital anomalies	1,181	0.3	620	0.1	5	0.3	556	1.9
Endocrine, nutritional, and metabolic diseases	13,141	2.9	12,906	3.1	60	4.1	175	0.6
Infectious and parasitic diseases	7,523	1.7	7,409	1.8	20	1.4	94	0.3
Injuries	20,285	4.5	19,420	4.7	67	4.6	798	2.7
Mental disorders								
Retardation	25,834	5.8	12,401	3.0	56	3.9	13,377	45.2
Other	91,026	20.3	81,794	19.6	276	19.0	8,956	30.3
Neoplasms	38,553	8.6	38,335	9.2	45	3.1	173	0.6
Diseases of the—								
Blood and blood-forming organs	1,344	0.3	1,191	0.3	7	0.5	146	0.5
Circulatory system	58,988	13.2	58,577	14.1	234	16.1	177	0.6
Digestive system	11,252	2.5	11,144	2.7	41	2.8	67	0.2
Genitourinary system	10,571	2.4	10,376	2.5	41	2.8	154	0.5
Musculoskeletal system and connective tissue	106,870	23.9	106,200	25.5	380	26.2	290	1.0
Nervous system and sense organs	36,592	8.2	33,057	7.9	88	6.1	3,447	11.6
Respiratory system	16,943	3.8	16,830	4.0	62	4.3	51	0.2
Skin and subcutaneous tissue	780	0.2	762	0.2	a	a	a	a
Other	972	0.2	867	0.2	a	a	a	a
Unknown	5,754	1.3	4,671	1.1	65	4.5	1,018	3.4

(Continued)

## Awards to All Disabled Beneficiaries

**Table 33.**  
**Distribution, by sex and diagnostic group, 2004—Continued**

Diagnostic group	Total		Workers		Widow(er)s		Adult children	
	Number	Percent	Number	Percent	Number	Percent	Number	Percent
<b>Women</b>								
Subtotal	407,262	100.0	358,684	100.0	26,293	100.0	22,285	100.0
Congenital anomalies	1,055	0.3	546	0.2	36	0.1	473	2.1
Endocrine, nutritional, and metabolic diseases	13,447	3.3	11,435	3.2	1,833	7.0	179	0.8
Infectious and parasitic diseases	3,403	0.8	3,101	0.9	213	0.8	89	0.4
Injuries	11,158	2.7	10,160	2.8	668	2.5	330	1.5
Mental disorders								
Retardation	20,107	4.9	8,078	2.3	979	3.7	11,050	49.6
Other	101,820	25.0	90,559	25.2	6,030	22.9	5,231	23.5
Neoplasms	36,399	8.9	35,302	9.8	971	3.7	126	0.6
Diseases of the—								
Blood and blood-forming organs	1,438	0.4	1,288	0.4	48	0.2	102	0.5
Circulatory system	29,591	7.3	26,872	7.5	2,553	9.7	166	0.7
Digestive system	7,348	1.8	6,901	1.9	392	1.5	55	0.2
Genitourinary system	6,934	1.7	6,493	1.8	309	1.2	132	0.6
Musculoskeletal system and connective tissue	112,263	27.6	104,115	29.0	7,818	29.7	330	1.5
Nervous system and sense organs	36,465	9.0	31,509	8.8	1,944	7.4	3,012	13.5
Respiratory system	17,309	4.3	15,732	4.4	1,497	5.7	80	0.4
Skin and subcutaneous tissue	1,010	0.2	947	0.3	a	a	a	a
Other	1,174	0.3	1,042	0.3	a	a	a	a
Unknown	6,341	1.6	4,604	1.3	909	3.5	828	3.7

SOURCE: Social Security Administration, Annual Award and Termination Transaction file, 100 percent data.

NOTES: Data exclude expedited reinstatement cases.

Effective 2001, the Social Security Administration initiated a special review of 130,000 Supplemental Security Income (SSI) recipients who are potentially eligible for Social Security disability benefits because of earnings while receiving SSI. Many of these claims awarded since 2001 were for individuals under the age of 35 who were diagnosed with a mental disorder.

a. Data not shown to avoid disclosure of information for particular individuals.

CONTACT: Carolyn A. Harrison (410) 965-5522 or di.asr@ssa.gov.



**Table 34.**  
**Distribution and average monthly benefit, by state or other area, 2004**

State or area	Workers			Widow(er)s			Adult children		
	Number	Percent	Average monthly benefit (dollars)	Number	Percent	Average monthly benefit (dollars)	Number	Percent	Average monthly benefit (dollars)
All areas	775,244	100.0	968.50	27,744	100.0	593.20	51,883	100.0	424.90
Alabama	19,726	2.5	952.00	949	3.4	555.90	1,205	2.3	402.60
Alaska	1,116	0.1	969.20	43	0.2	605.80	81	0.2	444.40
Arizona	14,796	1.9	984.90	393	1.4	625.80	787	1.5	438.70
Arkansas	12,709	1.6	919.40	587	2.1	534.90	803	1.5	350.10
California	72,999	9.4	920.70	2,006	7.2	637.90	4,408	8.5	451.90
Colorado	7,703	1.0	993.90	222	0.8	588.30	419	0.8	441.30
Connecticut	7,591	1.0	1,031.60	195	0.7	596.00	606	1.2	434.50
Delaware	2,874	0.4	1,003.50	75	0.3	587.70	111	0.2	424.50
District of Columbia	1,399	0.2	844.10	20	0.1	662.70	83	0.2	420.20
Florida	39,752	5.1	961.80	1,458	5.3	563.90	2,390	4.6	428.30
Georgia	20,793	2.7	975.20	861	3.1	556.20	1,207	2.3	421.10
Hawaii	2,348	0.3	996.90	67	0.2	662.40	133	0.3	437.90
Idaho	3,331	0.4	921.70	87	0.3	597.50	246	0.5	437.90
Illinois	27,244	3.5	1,013.80	953	3.4	607.90	2,145	4.1	435.60
Indiana	16,883	2.2	996.80	660	2.4	605.00	1,289	2.5	434.50
Iowa	6,753	0.9	940.40	199	0.7	603.60	673	1.3	358.70
Kansas	6,811	0.9	971.50	221	0.8	536.20	518	1.0	372.80
Kentucky	17,377	2.2	930.60	904	3.3	610.40	1,163	2.2	404.10
Louisiana	14,589	1.9	934.60	855	3.1	634.30	1,290	2.5	401.40
Maine	4,770	0.6	881.70	150	0.5	542.50	358	0.7	349.20
Maryland	12,830	1.7	1,006.60	311	1.1	627.50	611	1.2	478.50
Massachusetts	18,124	2.3	968.40	401	1.4	607.80	1,397	2.7	420.30
Michigan	28,755	3.7	1,028.80	1,025	3.7	689.40	2,049	3.9	486.20
Minnesota	11,322	1.5	970.80	227	0.8	589.70	902	1.7	395.80
Mississippi	11,464	1.5	914.50	552	2.0	535.00	838	1.6	380.90
Missouri	19,423	2.5	955.90	698	2.5	577.90	1,346	2.6	390.50
Montana	2,062	0.3	895.00	78	0.3	628.90	165	0.3	378.40
Nebraska	4,196	0.5	927.40	118	0.4	510.70	349	0.7	374.20
Nevada	6,049	0.8	1,006.10	169	0.6	641.00	267	0.5	469.00
New Hampshire	3,933	0.5	979.60	97	0.3	505.60	248	0.5	392.40
New Jersey	20,475	2.6	1,084.40	562	2.0	598.40	1,462	2.8	457.80
New Mexico	5,735	0.7	917.60	171	0.6	607.50	361	0.7	419.50
New York	50,917	6.6	1,030.70	1,548	5.6	610.40	3,486	6.7	450.80
North Carolina	27,216	3.5	969.70	1,077	3.9	512.00	1,672	3.2	414.80
North Dakota	1,208	0.2	903.20	31	0.1	519.60	126	0.2	372.50
Ohio	29,531	3.8	943.90	1,165	4.2	637.00	2,099	4.0	427.10
Oklahoma	11,862	1.5	931.10	477	1.7	592.10	687	1.3	408.60
Oregon	8,395	1.1	990.70	270	1.0	632.40	587	1.1	424.20
Pennsylvania	36,255	4.7	979.30	1,230	4.4	605.40	2,445	4.7	437.20
Rhode Island	3,577	0.5	914.30	87	0.3	535.30	202	0.4	419.30

(Continued)

**Awards to All Disabled Beneficiaries**

**Table 34.**  
**Distribution and average monthly benefit, by state or other area, 2004—Continued**

State or area	Workers			Widow(er)s			Adult children		
	Number	Percent	Average monthly benefit (dollars)	Number	Percent	Average monthly benefit (dollars)	Number	Percent	Average monthly benefit (dollars)
South Carolina	13,903	1.8	972.00	680	2.5	513.80	798	1.5	429.20
South Dakota	1,521	0.2	911.50	45	0.2	498.20	164	0.3	342.80
Tennessee	20,046	2.6	947.40	972	3.5	519.90	1,120	2.2	425.80
Texas	51,056	6.6	947.10	1,984	7.2	610.10	2,833	5.5	425.20
Utah	3,456	0.4	968.70	103	0.4	676.30	315	0.6	447.90
Vermont	1,840	0.2	899.30	53	0.2	559.10	149	0.3	396.80
Virginia	19,532	2.5	983.20	704	2.5	589.70	1,191	2.3	426.10
Washington	15,075	1.9	999.80	447	1.6	640.00	1,111	2.1	486.50
West Virginia	8,540	1.1	981.50	512	1.8	650.30	571	1.1	412.10
Wisconsin	13,616	1.8	995.90	376	1.4	611.10	1,197	2.3	393.80
Wyoming	1,229	0.2	971.60	36	0.1	514.90	72	0.1	427.90
Outlying areas									
Puerto Rico	9,144	1.2	839.00	522	1.9	481.60	923	1.8	313.80
Other <sup>a</sup>	1,393	0.2	753.70	111	0.4	575.90	225	0.4	324.70

SOURCE: Social Security Administration, Annual Award and Termination Transaction file, 100 percent data.

NOTES: Benefits awarded before December cost-of-living increase are converted to December rates before averages are computed.

Data exclude expedited reinstatement cases.

a. Includes American Samoa, Guam, Northern Mariana Islands, Virgin Islands, and foreign countries.

CONTACT: Carolyn A. Harrison (410) 965-5522 or di.asr@ssa.gov.

**Table 35.**  
**Percentage distribution, by sex and age, 1960–2004**

Year	Number	Percentage distribution										Average age
		Total, all ages	Under 30	30–34	35–39 <sup>a</sup>	40–44	45–49	50–54	55–59	60–61	62 or older	
<b>All disabled workers<sup>b</sup></b>												
2000	610,700	100.0	6.4	4.9	8.4	11.5	13.1	18.1	21.3	8.7	7.8	48.9
2001	661,900	100.0	7.8	5.3	8.0	10.8	12.9	18.0	21.6	8.5	7.1	48.6
2002	730,383	100.0	7.6	5.0	7.5	10.8	13.3	18.0	22.1	8.6	7.1	48.7
2003	755,706	100.0	6.9	5.0	7.2	10.6	13.4	18.1	22.5	9.0	7.3	49.0
2004	775,244	100.0	6.7	4.9	6.9	10.4	13.4	18.1	22.7	8.9	8.1	49.3
<b>Men</b>												
1960	168,466	100.0	0.8	a	7.0	6.5	10.5	16.7	20.0	11.8	26.7	54.5
1965	186,808	100.0	1.8	a	8.2	7.9	11.1	17.1	25.7	14.0	14.0	53.0
1970	258,072	100.0	6.7	a	7.6	6.5	10.1	14.7	23.5	12.3	18.7	52.1
1975	408,531	100.0	7.7	a	8.6	6.2	9.5	15.7	23.1	12.1	17.1	51.5
1980	275,185	100.0	8.3	a	9.7	6.0	8.4	14.7	24.6	12.3	16.0	51.2
1981	244,984	100.0	8.6	a	10.2	6.2	8.4	14.5	24.3	13.0	14.8	50.8
1982	207,453	100.0	8.4	a	10.4	6.3	8.4	14.1	24.6	12.9	14.8	50.9
1983	217,422	100.0	9.5	a	11.7	6.6	8.4	13.6	23.4	12.2	14.6	50.2
1984	247,833	100.0	9.2	a	12.8	7.1	8.7	13.4	22.6	12.2	14.0	50.0
1985	274,400	100.0	8.7	a	13.3	7.0	9.9	14.6	23.1	12.4	10.9	50.1
1986	273,700	100.0	10.7	a	15.3	8.1	9.4	14.3	21.3	11.1	9.8	48.7
1987	265,900	100.0	9.4	a	16.0	8.6	9.3	13.9	20.8	10.9	11.2	49.0
1988	265,700	100.0	8.4	a	16.0	9.7	9.0	14.6	21.3	10.5	10.4	49.2
1989	268,600	100.0	8.7	a	16.0	9.5	10.2	14.2	20.6	9.7	11.1	49.0
1990	293,300	100.0	10.9	a	16.9	9.4	9.5	13.5	20.5	10.3	8.9	48.1
1991	322,700	100.0	9.5	a	17.7	10.6	11.0	14.1	18.4	9.4	9.3	47.9
1992	395,600	100.0	9.5	a	18.5	10.8	11.0	13.0	18.6	9.8	8.9	47.8
1993	391,800	100.0	9.2	a	18.9	10.1	11.7	14.7	18.8	8.6	8.0	47.7
1994	379,300	100.0	6.8	a	18.4	10.8	12.7	15.4	19.3	9.0	7.7	48.4
1995	368,400	100.0	7.2	a	16.3	10.7	11.5	15.7	20.4	8.9	9.3	48.9
1996	347,100	100.0	6.9	7.2	9.0	10.8	13.2	16.2	19.9	9.3	7.6	48.3
1997	311,100	100.0	6.3	5.6	8.9	10.8	13.5	16.1	21.6	8.8	8.3	48.8
1998	331,400	100.0	6.3	6.2	8.1	11.1	12.4	18.3	21.6	8.1	8.0	48.8
1999	338,900	100.0	6.2	5.2	7.6	11.4	12.4	18.2	21.7	8.8	8.3	49.1
2000	328,700	100.0	6.8	4.6	8.3	10.7	12.7	17.6	21.1	9.1	9.1	49.1
2001	360,000	100.0	7.5	4.8	7.9	10.0	12.2	17.5	22.7	9.2	8.1	49.1
2002	394,741	100.0	7.9	4.7	7.1	10.2	12.6	17.6	22.9	9.3	7.8	49.0
2003	408,516	100.0	7.0	4.7	6.8	10.0	12.7	17.8	23.2	9.7	8.0	49.4
2004	416,560	100.0	6.8	4.6	6.5	9.8	12.8	17.7	23.4	9.6	8.9	49.6

(Continued)

## Awards to Disabled Workers

**Table 35.**  
**Percentage distribution, by sex and age, 1960–2004—Continued**

Year	Number	Percentage distribution										Average age
		Total, all ages	Under 30	30–34	35–39 <sup>a</sup>	40–44	45–49	50–54	55–59	60–61	62 or older	
<b>Women</b>												
1960	39,339	100.0	0.7	a	8.1	8.0	13.3	21.9	24.6	12.4	10.9	52.5
1965	66,691	100.0	1.1	a	6.5	7.4	11.7	19.3	28.3	14.1	11.5	53.2
1970	92,312	100.0	4.2	a	6.3	6.1	11.0	17.5	27.2	13.0	14.6	52.8
1975	183,518	100.0	6.1	a	7.3	6.1	10.1	17.7	25.5	12.2	15.0	52.1
1980	121,374	100.0	7.4	a	9.7	6.4	9.3	16.3	25.5	11.7	13.7	51.1
1981	106,863	100.0	7.8	a	10.2	6.5	9.5	16.4	25.1	12.0	12.5	50.8
1982	89,678	100.0	8.0	a	10.9	6.8	9.5	15.6	24.9	11.7	12.5	50.5
1983	94,127	100.0	9.0	a	12.2	7.4	9.5	14.8	23.5	10.9	12.7	49.8
1984	114,165	100.0	8.3	a	13.2	7.9	9.7	14.9	22.8	10.9	12.9	49.7
1985	134,500	100.0	8.6	a	12.9	8.0	10.6	15.8	23.3	10.1	10.6	49.7
1986	135,700	100.0	9.0	a	15.5	10.4	10.5	14.8	21.3	9.6	8.8	48.8
1987	143,700	100.0	7.5	a	15.2	8.1	11.2	15.8	23.4	9.6	9.1	49.5
1988	147,000	100.0	8.5	a	14.0	8.8	10.9	16.1	23.5	10.5	7.7	49.3
1989	146,900	100.0	7.8	a	14.8	10.4	11.9	13.8	21.2	10.8	9.2	49.1
1990	168,500	100.0	8.5	a	16.3	9.8	13.1	14.2	22.3	8.9	6.9	48.4
1991	190,400	100.0	8.5	a	16.8	10.1	12.2	16.2	19.5	8.9	7.8	48.4
1992	241,300	100.0	8.6	a	17.7	12.0	12.4	15.6	17.6	8.4	7.7	47.7
1993	237,900	100.0	7.5	a	17.5	11.2	13.1	16.5	19.7	6.8	7.6	48.1
1994	234,000	100.0	7.4	a	16.9	11.1	12.9	17.0	20.8	7.3	6.6	48.2
1995	263,200	100.0	6.4	a	16.7	11.4	13.8	17.2	20.5	7.6	6.4	48.5
1996	256,900	100.0	5.3	6.2	8.9	11.3	14.0	19.0	21.2	8.3	5.9	48.7
1997	250,200	100.0	6.2	6.0	10.3	12.2	14.1	19.0	19.0	6.8	6.4	47.9
1998	271,900	100.0	5.4	5.9	9.0	12.2	14.5	19.1	20.4	7.6	5.9	48.5
1999	266,900	100.0	5.7	5.9	8.7	12.5	15.4	18.1	20.6	6.6	6.5	48.7
2000	282,000	100.0	5.8	5.2	8.6	12.3	13.5	18.7	21.6	8.1	6.3	48.7
2001	301,900	100.0	8.0	5.9	8.2	11.8	13.8	18.5	20.2	7.7	6.0	48.0
2002	335,642	100.0	7.3	5.3	8.0	11.4	14.2	18.5	21.2	7.7	6.3	48.3
2003	347,190	100.0	6.8	5.4	7.7	11.3	14.2	18.5	21.7	8.1	6.5	48.6
2004	358,684	100.0	6.6	5.3	7.3	11.0	14.0	18.6	21.9	8.2	7.2	48.9

SOURCES: Social Security Administration. For years before 2000, *Annual Statistical Supplement to the Social Security Bulletin*, based on the Master Beneficiary Record, various sampling rates; from 2000 to 2001, Annual Award and Termination Transaction file, 1 percent sample; data after 2001 are 100 percent data.

NOTES: Age in year of award from 1960 to 1984; age in month of award after 1984.

Data exclude closed period awards in 2002 and 2003 and expedited reinstatement cases since 2002.

a. Ages 30–34 were grouped with ages 35–39 before 1996.

b. Combined data for men and women are not available before 2000.

CONTACT: Carolyn A. Harrison (410) 965-5522 or di.asr@ssa.gov.

**Table 36.**  
**Distribution, by diagnostic group, 1960–2004**

Year	Total	Congenital anomalies	Endocrine, nutritional, and metabolic diseases	Infectious and parasitic diseases <sup>a</sup>	Injuries	Mental disorders <sup>b</sup>			Neoplasms
						Total	Retardation	Other	
<i>Number</i>									
1960	207,805	865	5,406	10,903	--	17,287	--	--	17,739
1961	279,758	1,637	7,070	15,153	--	26,864	--	--	23,103
1962	286,434	2,026	9,383	15,271	--	37,315	--	--	27,632
1963	224,229	1,646	7,563	10,859	6,496	24,526	--	--	25,042
1967	310,947	--	10,743	10,945	19,815	35,344	--	--	33,358
1968	330,783	2,670	11,359	10,360	25,319	41,894	--	--	36,560
1969	344,741	3,004	12,169	9,828	28,473	43,225	--	--	35,740
1970	350,384	3,597	13,141	8,760	28,231	38,406	--	--	36,095
1971	415,897	4,365	15,823	8,524	31,810	42,687	--	--	39,629
1972	455,438	4,033	17,352	8,627	31,728	45,253	--	--	43,667
1973	491,776	5,276	18,131	7,957	30,418	47,014	--	--	50,644
1975	592,049	6,576	23,176	7,579	32,341	67,213	--	--	59,852
1976	551,460	5,817	20,966	6,049	29,848	63,667	--	--	57,656
1977	568,874	6,681	21,725	5,807	31,942	70,825	--	--	59,833
1978	464,415	5,850	16,855	4,512	27,490	54,329	--	--	54,878
1981	351,847	3,118	14,768	2,596	20,868	36,318	--	--	56,410
1982	298,531	2,432	13,187	2,312	16,617	31,531	--	--	50,999
1983	311,490	2,827	14,904	6,730	15,646	50,633	--	--	52,379
1984	357,140	2,439	14,418	3,185	16,189	64,078	--	--	59,104
1985	377,371	2,480	16,976	2,985	16,558	68,610	--	--	55,120
1986	416,865	1,953	21,260	2,736	3,629	123,983	--	--	53,176
1987	415,848	787	21,114	4,676	20,889	81,241	--	--	55,339
1988	409,490	550	14,513	2,802	21,022	85,756	--	--	53,944
1989	425,582	534	14,279	3,773	21,531	88,500	--	--	60,352
1990	467,977	511	16,255	22,023	22,315	105,173	--	--	65,939
1991	536,434	575	19,931	28,245	24,129	126,184	--	--	69,244
1992	636,637	619	29,904	39,253	25,042	164,093	--	--	77,175
1993	635,238	543	30,862	37,450	23,206	166,045	--	--	80,266
1994	631,870	602	31,532	36,087	22,560	156,703	--	--	89,231
1995	645,645	722	33,370	27,993	27,566	147,900	16,681	131,219	64,401
1996	624,254	777	33,832	23,324	27,616	132,022	14,062	117,960	63,321
1997	587,700	654	33,807	15,327	25,930	122,901	12,888	110,013	62,279
1998	608,382	676	36,373	12,680	25,926	131,502	14,506	116,996	63,973
1999	620,559	645	36,975	11,743	25,925	138,980	16,608	122,372	65,681
2000	610,700	700	17,100	10,700	28,700	143,200	17,600	125,600	63,600
2001	661,900	d	19,500	11,200	25,400	168,600	22,500	146,100	62,000
2002	730,383	1,113	21,830	10,966	28,169	185,313	22,352	162,961	70,369
2003	755,706	1,152	23,407	10,879	28,612	191,679	19,338	172,341	70,942
2004	775,244	1,166	24,341	10,510	29,580	192,832	20,479	172,353	73,637

(Continued)

**Awards to Disabled Workers**

**Table 36.**  
**Distribution, by diagnostic group, 1960–2004—Continued**

Year	Diseases of the—								Other	Unknown <sup>c</sup>
	Blood and blood-forming organs	Circulatory system	Digestive system	Genitourinary system	Musculoskeletal system and connective tissue	Nervous system and sense organs	Respiratory system	Skin and subcutaneous tissue		
<i>Number</i>										
1960	442	55,855	3,575	1,077	17,124	32,105	16,489	463	89	28,386
1961	566	71,860	4,300	1,608	23,241	44,709	20,030	794	125	38,698
1962	739	82,015	5,922	2,040	33,751	45,261	23,408	1,177	494	--
1963	597	66,468	4,437	1,725	21,744	32,712	19,107	719	588	--
1967	--	81,507	7,627	--	41,090	38,278	24,646	--	7,594	--
1968	--	80,906	7,806	2,926	43,677	41,758	22,635	--	2,913	--
1969	--	105,760	8,719	2,717	47,357	21,967	23,265	--	2,517	--
1970	--	108,906	9,051	2,912	52,086	22,575	24,254	--	2,370	--
1971	1,043	131,854	11,629	3,501	66,558	26,442	30,103	1,667	262	--
1972	1,155	146,684	13,369	4,304	75,923	28,216	33,038	1,756	293	40
1973	1,347	158,202	14,614	4,810	85,431	31,139	34,656	1,854	283	--
1975	1,491	177,311	17,474	5,719	110,637	39,960	39,485	2,306	929	--
1976	2,039	165,182	15,194	4,907	105,907	36,156	35,210	2,532	330	--
1977	1,516	167,801	15,342	5,271	107,840	36,751	35,002	1,766	772	--
1978	1,236	134,634	12,407	4,719	86,921	29,314	28,005	2,017	1,248	--
1981	942	85,994	7,363	6,230	58,639	28,516	21,520	1,345	616	6,604
1982	808	74,242	6,067	3,165	48,985	26,886	19,766	998	536	--
1983	958	68,352	5,272	6,489	41,782	26,203	17,978	848	d	d
1984	904	70,891	5,895	3,441	45,826	28,201	18,891	983	776	21,919
1985	890	72,764	5,626	3,348	49,214	28,733	20,213	1,110	992	31,752
1986	1,186	73,226	6,262	3,099	54,560	30,328	23,449	1,075	--	16,943
1987	1,205	76,758	6,122	5,801	63,807	35,206	22,978	1,173	--	18,752
1988	1,419	72,224	6,388	7,131	68,623	34,443	23,073	785	16,817	--
1989	1,524	70,235	6,803	9,010	71,419	34,756	21,400	828	20,638	--
1990	1,734	73,585	7,431	10,294	74,501	37,737	22,158	866	7,455	--
1991	1,904	78,339	8,648	10,874	92,469	41,551	23,798	1,021	9,522	--
1992	2,277	89,818	9,872	12,763	96,895	46,952	27,264	1,070	13,640	--
1993	2,075	88,623	10,026	13,390	94,255	45,742	27,494	1,118	14,143	--
1994	2,066	86,645	10,520	15,531	84,705	47,820	30,958	1,116	15,794	--
1995	2,006	83,065	11,167	11,956	141,306	46,477	28,831	1,643	14,746	2,496
1996	1,836	81,209	11,530	12,206	142,776	45,960	27,983	1,588	18,274	2,590
1997	1,815	76,531	11,310	12,151	135,430	45,496	26,483	1,473	14,436	1,677
1998	1,801	76,698	12,413	13,118	141,847	47,517	27,148	1,466	13,744	1,500
1999	1,911	74,755	13,389	13,842	146,754	49,869	26,981	1,416	10,252	1,441
2000	1,500	75,400	12,700	14,900	153,600	50,100	26,200	1,700	9,300	1,300
2001	2,200	82,500	15,600	16,300	162,100	54,600	28,300	d	10,000	1,800
2002	2,491	85,252	15,976	16,412	186,923	62,519	30,591	1,609	1,866	8,984
2003	2,408	85,896	17,084	16,968	199,014	64,369	32,007	1,622	1,871	7,796
2004	2,479	85,449	18,045	16,869	210,315	64,566	32,562	1,709	1,909	9,275

(Continued)

**Table 36.**  
**Distribution, by diagnostic group, 1960–2004—Continued**

Year	Total	Congenital anomalies	Endocrine, nutritional, and metabolic diseases	Infectious and parasitic diseases <sup>a</sup>	Injuries	Mental disorders <sup>b</sup>			Neoplasms
						Total	Retardation	Other	
<i>Percent</i>									
1960	100.0	0.4	2.6	5.2	--	8.3	--	--	8.5
1961	100.0	0.6	2.5	5.4	--	9.6	--	--	8.3
1962	100.0	0.7	3.3	5.3	--	13.0	--	--	9.6
1963	100.0	0.7	3.4	4.8	2.9	10.9	--	--	11.2
1967	100.0	--	3.5	3.5	6.4	11.4	--	--	10.7
1968	100.0	0.8	3.4	3.1	7.7	12.7	--	--	11.1
1969	100.0	0.9	3.5	2.9	8.3	12.5	--	--	10.4
1970	100.0	1.0	3.8	2.5	8.1	11.0	--	--	10.3
1971	100.0	1.0	3.8	2.0	7.6	10.3	--	--	9.5
1972	100.0	0.9	3.8	1.9	7.0	9.9	--	--	9.6
1973	100.0	1.1	3.7	1.6	6.2	9.6	--	--	10.3
1975	100.0	1.1	3.9	1.3	5.5	11.4	--	--	10.1
1976	100.0	1.1	3.8	1.1	5.4	11.5	--	--	10.5
1977	100.0	1.2	3.8	1.0	5.6	12.5	--	--	10.5
1978	100.0	1.3	3.6	1.0	5.9	11.7	--	--	11.8
1981	100.0	0.9	4.2	0.7	5.9	10.3	--	--	16.0
1982	100.0	0.8	4.4	0.8	5.6	10.6	--	--	17.1
1983	100.0	0.9	4.8	2.2	5.0	16.3	--	--	16.8
1984	100.0	0.7	4.0	0.9	4.5	17.9	--	--	16.5
1985	100.0	0.7	4.5	0.8	4.4	18.2	--	--	14.6
1986	100.0	0.5	5.1	0.7	0.9	29.7	--	--	12.8
1987	100.0	0.2	5.1	1.1	5.0	19.5	--	--	13.3
1988	100.0	0.1	3.5	0.7	5.1	20.9	--	--	13.2
1989	100.0	0.1	3.4	0.9	5.1	20.8	--	--	14.2
1990	100.0	0.1	3.5	4.7	4.8	22.5	--	--	14.1
1991	100.0	0.1	3.7	5.3	4.5	23.5	--	--	12.9
1992	100.0	0.1	4.7	6.2	3.9	25.8	--	--	12.1
1993	100.0	0.1	4.9	5.9	3.7	26.1	--	--	12.6
1994	100.0	0.1	5.0	5.7	3.6	24.8	--	--	14.1

(Continued)

Awards to Disabled Workers

**Table 36.**  
**Distribution, by diagnostic group, 1960–2004—Continued**

Year	Diseases of the—								Other	Unknown <sup>c</sup>
	Blood and blood-forming organs	Circulatory system	Digestive system	Genitourinary system	Musculoskeletal system and connective tissue	Nervous system and sense organs	Respiratory system	Skin and subcutaneous tissue		
	<i>Percent</i>									
1960	0.2	26.9	1.7	0.5	8.2	15.4	7.9	0.2	e	13.7
1961	0.2	25.7	1.5	0.6	8.3	16.0	7.2	0.3	e	13.8
1962	0.3	28.6	2.1	0.7	11.8	15.8	8.2	0.4	0.2	--
1963	0.3	29.6	2.0	0.8	9.7	14.6	8.5	0.3	0.3	--
1967	--	26.2	2.5	--	13.2	12.3	7.9	--	2.4	--
1968	--	24.5	2.4	0.9	13.2	12.6	6.8	--	0.9	--
1969	--	30.7	2.5	0.8	13.7	6.4	6.7	--	0.7	--
1970	--	31.1	2.6	0.8	14.9	6.4	6.9	--	0.7	--
1971	0.3	31.7	2.8	0.8	16.0	6.4	7.2	0.4	0.1	--
1972	0.3	32.2	2.9	0.9	16.7	6.2	7.3	0.4	0.1	e
1973	0.3	32.2	3.0	1.0	17.4	6.3	7.0	0.4	0.1	--
1975	0.3	29.9	3.0	1.0	18.7	6.7	6.7	0.4	0.2	--
1976	0.4	30.0	2.8	0.9	19.2	6.6	6.4	0.5	0.1	--
1977	0.3	29.5	2.7	0.9	19.0	6.5	6.2	0.3	0.1	--
1978	0.3	29.0	2.7	1.0	18.7	6.3	6.0	0.4	0.3	--
1981	0.3	24.4	2.1	1.8	16.7	8.1	6.1	0.4	0.2	1.9
1982	0.3	24.9	2.0	1.1	16.4	9.0	6.6	0.3	0.2	--
1983	0.3	21.9	1.7	2.1	13.4	8.4	5.8	0.3	d	d
1984	0.3	19.8	1.7	1.0	12.8	7.9	5.3	0.3	0.2	6.1
1985	0.2	19.3	1.5	0.9	13.0	7.6	5.4	0.3	0.3	8.4
1986	0.3	17.6	1.5	0.7	13.1	7.3	5.6	0.3	--	4.1
1987	0.3	18.5	1.5	1.4	15.3	8.5	5.5	0.3	--	4.5
1988	0.3	17.6	1.6	1.7	16.8	8.4	5.6	0.2	4.1	--
1989	0.4	16.5	1.6	2.1	16.8	8.2	5.0	0.2	4.8	--
1990	0.4	15.7	1.6	2.2	15.9	8.1	4.7	0.2	1.6	--
1991	0.4	14.6	1.6	2.0	17.2	7.7	4.4	0.2	1.8	--
1992	0.4	14.1	1.6	2.0	15.2	7.4	4.3	0.2	2.1	--
1993	0.3	14.0	1.6	2.1	14.8	7.2	4.3	0.2	2.2	--
1994	0.3	13.7	1.7	2.5	13.4	7.6	4.9	0.2	2.5	--

(Continued)



**Table 36.**  
**Distribution, by diagnostic group, 1960–2004—Continued**

Year	Total	Congenital anomalies	Endocrine, nutritional, and metabolic diseases	Infectious and parasitic diseases <sup>a</sup>	Injuries	Mental disorders <sup>b</sup>			Neoplasms
						Total	Retardation	Other	
<i>Percent (cont.)</i>									
1995	100.0	0.1	5.2	4.3	4.3	22.9	2.6	20.3	10.0
1996	100.0	0.1	5.4	3.7	4.4	21.1	2.3	18.9	10.1
1997	100.0	0.1	5.8	2.6	4.4	20.9	2.2	18.7	10.6
1998	100.0	0.1	6.0	2.1	4.3	21.6	2.4	19.2	10.5
1999	100.0	0.1	6.0	1.9	4.2	22.4	2.7	19.7	10.6
2000	100.0	0.1	2.8	1.8	4.7	23.4	2.9	20.6	10.4
2001	100.0	d	2.9	1.7	3.8	25.5	3.4	22.1	9.4
2002	100.0	0.2	3.0	1.5	3.9	25.4	3.1	22.3	9.6
2003	100.0	0.2	3.1	1.4	3.8	25.4	2.6	22.8	9.4
2004	100.0	0.2	3.1	1.4	3.8	24.8	2.6	22.2	9.5

(Continued)

**Awards to Disabled Workers**

**Table 36.**  
**Distribution, by diagnostic group, 1960–2004—Continued**

Year	Diseases of the—								Other	Unknown <sup>c</sup>
	Blood and blood-forming organs	Circulatory system	Digestive system	Genitourinary system	Musculoskeletal system and connective tissue	Nervous system and sense organs	Respiratory system	Skin and subcutaneous tissue		
<i>Percent (cont.)</i>										
1995	0.3	12.9	1.7	1.9	21.9	7.2	4.5	0.3	2.3	0.4
1996	0.3	13.0	1.8	2.0	22.9	7.4	4.5	0.3	2.9	0.4
1997	0.3	13.0	1.9	2.1	23.0	7.7	4.5	0.3	2.5	0.3
1998	0.3	12.6	2.0	2.2	23.3	7.8	4.5	0.2	2.3	0.2
1999	0.3	12.0	2.2	2.2	23.6	8.0	4.3	0.2	1.7	0.2
2000	0.2	12.3	2.1	2.4	25.2	8.2	4.3	0.3	1.5	0.2
2001	0.3	12.5	2.4	2.5	24.5	8.2	4.3	d	1.5	0.3
2002	0.3	11.7	2.2	2.2	25.6	8.6	4.2	0.2	0.3	1.2
2003	0.3	11.4	2.3	2.2	26.3	8.5	4.2	0.2	0.2	1.0
2004	0.3	11.0	2.3	2.2	27.1	8.3	4.2	0.2	0.2	1.2

SOURCES: Social Security Administration. For years before 2000, *Annual Statistical Supplement to the Social Security Bulletin*, based on the Master Beneficiary Record, various sampling rates; from 2000 to 2001, Annual Award and Termination Transaction file, 1 percent sample; data after 2001 are 100 percent data.

NOTES: Data exclude closed period awards in 2002 and 2003 and expedited reinstatement cases since 2002.

Data from 1964 to 1966 are not available. Before 1995, diagnostic data for cases awarded at the appeals levels were estimated on the basis of the diagnosis of cases allowed at the initial disability determination level.

Effective 2001, the Social Security Administration initiated a special review of 130,000 Supplemental Security Income (SSI) recipients who are potentially eligible for Social Security disability benefits because of earnings while receiving SSI. Many of these claims awarded since 2001 were for individuals under the age of 35 who were diagnosed with a mental disorder.

-- = not available.

- a. AIDS and HIV records are counted in "Infectious and parasitic diseases." Before 1990, they were included in "Other."
- b. Mental retardation was not identified separately before 1995.
- c. Beginning with 2002, several ill-defined impairment codes were reclassified and added to "Unknown."
- d. Data not shown to avoid disclosure of information for particular individuals.
- e. Less than 0.05 percent.

CONTACT: Carolyn A. Harrison (410) 965-5522 or di.asr@ssa.gov.

**Table 37.**  
**Distribution of workers under age 50, by diagnostic group, selected years 1975–2004**

Year	Total	Congenital anomalies	Endocrine, nutritional, and metabolic diseases	Infectious and parasitic diseases <sup>a</sup>	Injuries	Mental disorders <sup>b</sup>			Neoplasms
						Total	Retardation	Other	
<i>Number</i>									
1975	183,493	3,712	6,511	3,357	17,945	42,119	--	--	15,588
1981	123,090	1,945	5,188	1,209	13,327	24,633	--	--	15,017
1982	109,279	1,579	4,739	1,096	11,088	21,654	--	--	14,581
1983	120,606	1,429	5,630	3,759	10,036	35,331	--	--	14,827
1984	140,792	1,375	5,750	1,528	9,535	43,680	--	--	16,173
1985	158,152	1,438	7,534	1,510	10,357	49,313	--	--	16,857
1986	188,355	1,202	10,816	1,534	1,882	89,821	--	--	16,318
1987	184,481	498	12,405	3,262	13,064	58,970	--	--	17,595
1988	183,017	326	5,848	1,383	12,590	63,282	--	--	16,859
1989	189,708	311	6,088	2,497	12,761	64,093	--	--	19,298
1990	215,381	317	7,190	19,290	12,929	77,901	--	--	21,597
1991	255,448	384	8,949	24,838	13,892	94,345	--	--	23,162
1992	313,175	404	15,349	34,766	13,691	125,609	--	--	26,485
1993	312,619	350	15,550	33,072	12,690	126,586	--	--	27,841
1994	292,987	384	15,107	31,210	11,563	116,812	--	--	30,791
1995	308,624	472	14,963	23,736	15,325	108,516	13,731	94,785	22,367
1996	294,077	513	15,013	19,633	15,674	95,089	11,661	83,428	21,940
1997	265,019	435	14,667	12,361	14,401	85,486	10,679	74,807	21,245
1998	273,282	462	15,768	9,817	14,321	90,072	11,880	78,192	22,093
1999	259,680	370	15,426	8,667	13,399	86,642	9,341	77,301	21,960
2000	269,800	d	6,000	6,900	16,200	98,300	14,400	83,900	21,100
2001	296,800	d	7,300	8,900	12,900	118,700	20,200	98,500	20,600
2002	322,539	796	7,875	7,677	13,952	128,791	19,544	109,247	23,725
2003	325,723	857	7,944	7,559	13,716	130,964	16,605	114,359	23,381
2004	326,862	851	8,288	6,991	14,146	129,592	17,699	111,893	23,577

(Continued)

**Awards to Disabled Workers**

**Table 37.**  
**Distribution of workers under age 50, by diagnostic group, selected years 1975–2004—Continued**

Year	Diseases of the—								Other	Unknown <sup>c</sup>
	Blood and blood-forming organs	Circulatory system	Digestive system	Genito-urinary system	Musculo-skeletal system and connective tissue	Nervous system and sense organs	Respiratory system	Skin and subcutaneous tissue		
	<i>Number</i>									
1975	748	30,293	5,856	2,534	30,635	17,326	5,459	954	456	--
1981	516	15,278	3,000	3,314	21,076	14,478	3,189	687	d	d
1982	416	14,309	2,761	1,740	17,889	13,882	2,757	538	250	--
1983	457	13,589	2,292	2,540	14,158	13,456	2,434	486	d	d
1984	537	13,508	2,304	1,711	14,295	14,041	2,463	475	270	13,147
1985	472	13,650	2,756	1,791	15,060	14,724	2,771	485	--	19,434
1986	688	13,946	3,020	1,684	17,148	16,295	3,043	537	--	10,421
1987	739	16,518	2,764	3,005	20,519	19,057	3,535	659	--	11,891
1988	867	15,535	3,158	4,257	23,285	18,364	3,771	457	13,035	--
1989	946	14,224	3,311	5,364	22,628	18,896	3,464	404	15,424	--
1990	1,094	15,157	3,693	6,171	22,068	20,627	3,538	428	3,381	--
1991	1,218	16,559	4,403	6,437	29,444	22,795	4,073	524	4,425	--
1992	1,478	18,775	5,182	7,595	26,347	26,120	4,599	573	6,202	--
1993	1,342	19,040	5,328	7,812	26,920	24,901	4,664	593	5,930	--
1994	1,278	16,949	5,537	8,840	17,918	25,350	4,929	572	5,747	--
1995	1,250	17,490	6,036	6,705	51,664	24,814	5,705	899	6,859	1,823
1996	1,118	17,608	6,308	6,872	54,008	24,412	5,747	945	9,197	--
1997	1,053	16,333	6,029	6,724	48,741	23,479	5,286	826	6,565	1,388
1998	1,072	16,607	6,683	7,066	50,426	24,297	5,517	851	7,000	1,230
1999	1,031	15,065	7,022	7,172	49,302	23,386	4,783	783	4,383	289
2000	d	15,900	6,900	8,500	51,900	25,000	5,400	d	4,700	--
2001	d	16,900	7,600	9,900	50,400	29,900	5,200	d	4,600	1,000
2002	1,481	18,348	7,999	8,649	58,796	31,571	6,221	877	945	4,836
2003	1,405	18,479	8,178	8,738	60,594	31,514	6,663	848	920	3,963
2004	1,429	17,862	8,375	8,441	63,432	31,142	6,537	937	925	4,337

(Continued)

**Table 37.**  
**Distribution of workers under age 50, by diagnostic group, selected years 1975–2004—Continued**

Year	Total	Congenital anomalies	Endocrine, nutritional, and metabolic diseases	Infectious and parasitic diseases <sup>a</sup>	Injuries	Mental disorders <sup>b</sup>			Neoplasms
						Total	Retardation	Other	
<i>Percent</i>									
1975	100.0	2.0	3.5	1.8	9.8	23.0	--	--	8.5
1981	100.0	1.6	4.2	1.0	10.8	20.0	--	--	12.2
1982	100.0	1.4	4.3	1.0	10.1	19.8	--	--	13.3
1983	100.0	1.2	4.7	3.1	8.3	29.3	--	--	12.3
1984	100.0	1.0	4.1	1.1	6.8	31.0	--	--	11.5
1985	100.0	0.9	4.8	1.0	6.5	31.2	--	--	10.7
1986	100.0	0.6	5.7	0.8	1.0	47.7	--	--	8.7
1987	100.0	0.3	6.7	1.8	7.1	32.0	--	--	9.5
1988	100.0	0.2	3.2	0.8	6.9	34.6	--	--	9.2
1989	100.0	0.2	3.2	1.3	6.7	33.8	--	--	10.2
1990	100.0	0.1	3.3	9.0	6.0	36.2	--	--	10.0
1991	100.0	0.2	3.5	9.7	5.4	36.9	--	--	9.1
1992	100.0	0.1	4.9	11.1	4.4	40.1	--	--	8.5
1993	100.0	0.1	5.0	10.6	4.1	40.5	--	--	8.9
1994	100.0	0.1	5.2	10.7	3.9	39.9	--	--	10.5
1995	100.0	0.2	4.8	7.7	5.0	35.2	4.4	30.7	7.2
1996	100.0	0.2	5.1	6.7	5.3	32.3	4.0	28.4	7.5
1997	100.0	0.2	5.5	4.7	5.4	32.3	4.0	28.2	8.0
1998	100.0	0.2	5.8	3.6	5.2	33.0	4.3	28.6	8.1
1999	100.0	0.1	5.9	3.3	5.2	33.4	3.6	29.8	8.5
2000	100.0	d	2.2	2.6	6.0	36.5	5.4	31.2	7.8
2001	100.0	d	2.5	3.0	4.3	40.0	6.8	33.2	6.9
2002	100.0	0.2	2.4	2.4	4.3	39.9	6.1	33.9	7.4
2003	100.0	0.3	2.4	2.3	4.2	40.2	5.1	35.1	7.2
2004	100.0	0.3	2.5	2.1	4.3	39.6	5.4	34.2	7.2

(Continued)

**Awards to Disabled Workers**

**Table 37.**  
**Distribution of workers under age 50, by diagnostic group, selected years 1975–2004—Continued**

Year	Diseases of the—								Other	Unknown <sup>c</sup>
	Blood and blood-forming organs	Circulatory system	Digestive system	Genitourinary system	Musculoskeletal system and connective tissue	Nervous system and sense organs	Respiratory system	Skin and subcutaneous tissue		
<i>Percent</i>										
1975	0.4	16.5	3.2	1.4	16.7	9.4	3.0	0.5	0.2	--
1981	0.4	12.4	2.4	2.7	17.1	11.8	2.6	0.6	d	d
1982	0.4	13.1	2.5	1.6	16.4	12.7	2.5	0.5	0.2	--
1983	0.4	11.3	1.9	2.1	11.7	11.2	2.0	0.4	d	d
1984	0.4	9.6	1.6	1.2	10.2	10.0	1.7	0.3	0.2	9.3
1985	0.3	8.6	1.7	1.1	9.5	9.3	1.8	0.3	--	12.3
1986	0.4	7.4	1.6	0.9	9.1	8.7	1.6	0.3	--	5.5
1987	0.4	9.0	1.5	1.6	11.1	10.3	1.9	0.4	--	6.4
1988	0.5	8.5	1.7	2.3	12.7	10.0	2.1	0.2	7.1	--
1989	0.5	7.5	1.7	2.8	11.9	10.0	1.8	0.2	8.1	--
1990	0.5	7.0	1.7	2.9	10.2	9.6	1.6	0.2	1.6	--
1991	0.5	6.5	1.7	2.5	11.5	8.9	1.6	0.2	1.7	--
1992	0.5	6.0	1.7	2.4	8.4	8.3	1.5	0.2	2.0	--
1993	0.4	6.1	1.7	2.5	8.6	8.0	1.5	0.2	1.9	--
1994	0.4	5.8	1.9	3.0	6.1	8.7	1.7	0.2	2.0	--
1995	0.4	5.7	2.0	2.2	16.7	8.0	1.8	0.3	2.2	0.6
1996	0.4	6.0	2.1	2.3	18.4	8.3	2.0	0.3	3.1	--
1997	0.4	6.2	2.3	2.5	18.4	8.9	2.0	0.3	2.5	0.5
1998	0.4	6.1	2.4	2.6	18.5	8.9	2.0	0.3	2.6	0.5
1999	0.4	5.8	2.7	2.8	19.0	9.0	1.8	0.3	1.7	0.1
2000	d	5.9	2.6	3.2	19.3	9.3	2.0	d	1.7	--
2001	d	5.7	2.6	3.3	17.0	10.1	1.8	d	1.6	0.3
2002	0.5	5.7	2.5	2.7	18.2	9.8	1.9	0.3	0.3	1.5
2003	0.4	5.7	2.5	2.7	18.6	9.7	2.0	0.3	0.3	1.2
2004	0.4	5.5	2.6	2.6	19.4	9.5	2.0	0.3	0.3	1.3

SOURCES: Social Security Administration. For years before 2000, *Annual Statistical Supplement to the Social Security Bulletin*, based on the Master Beneficiary Record, various sampling rates; from 2000 to 2001, Annual Award and Termination Transaction file, 1 percent sample; data after 2001 are 100 percent data.

NOTES: Data exclude closed period awards in 2002 and 2003 and expedited reinstatement cases since 2002.

Before 1995, diagnostic data for cases awarded at the appeals levels were estimated on the basis of the diagnosis of cases allowed at the initial disability determination level.

Effective 2001, the Social Security Administration initiated a special review of 130,000 Supplemental Security Income (SSI) recipients who are potentially eligible for Social Security disability benefits because of earnings while receiving SSI. Many of these claims awarded since 2001 were for individuals under the age of 35 who were diagnosed with a mental disorder.

-- = not available.

- a. AIDS and HIV records are counted in "Infectious and parasitic diseases." Before 1990, they were included in "Other."
- b. Mental retardation was not identified separately before 1995.
- c. Beginning with 2002, several ill-defined impairment codes were reclassified and added to "Unknown."
- d. Data not shown to avoid disclosure of information for particular individuals.

CONTACT: Carolyn A. Harrison (410) 965-5522 or di.asr@ssa.gov.

**Table 38.**  
**Distribution of workers aged 50 or older, by diagnostic group, selected years 1975–2004**

Year	Total	Congenital anomalies	Endocrine, nutritional, and metabolic diseases	Infectious and parasitic diseases <sup>a</sup>	Injuries	Mental disorders <sup>b</sup>			Neoplasms
						Total	Retardation	Other	
<i>Number</i>									
1975	408,556	2,864	16,665	4,222	14,396	25,094	--	--	44,264
1981	222,162	1,173	9,580	1,387	7,541	11,685	--	--	41,393
1982	189,252	853	8,448	1,216	5,529	9,877	--	--	36,418
1983	190,884	1,398	9,274	2,971	5,610	15,302	--	--	37,552
1984	216,348	1,064	8,668	1,657	6,654	20,398	--	--	42,931
1985	219,219	1,042	9,442	1,475	6,201	19,297	--	--	38,263
1986	228,510	751	10,444	1,202	1,747	34,162	--	--	36,858
1987	231,367	289	8,709	1,414	7,825	22,271	--	--	37,744
1988	226,473	224	8,665	1,419	8,432	22,474	--	--	37,085
1989	235,874	223	8,191	1,276	8,770	24,407	--	--	41,054
1990	252,596	194	9,065	2,733	9,386	27,272	--	--	44,342
1991	280,986	191	10,982	3,407	10,237	31,839	--	--	46,082
1992	323,462	215	14,555	4,487	11,351	38,484	--	--	50,690
1993	322,619	193	15,312	4,378	10,516	39,459	--	--	52,425
1994	338,833	218	16,425	4,877	10,997	39,891	--	--	58,440
1995	337,021	250	18,407	4,257	12,241	39,384	2,950	36,434	42,034
1996	330,177	264	18,819	3,691	11,942	36,933	2,401	34,532	41,381
1997	322,681	219	19,140	2,966	11,529	37,415	2,209	35,206	41,034
1998	335,100	214	20,605	2,863	11,605	41,430	2,626	38,804	41,880
1999	360,879	275	21,549	3,076	12,526	52,338	7,267	45,071	43,721
2000	340,900	d	11,100	3,800	12,500	44,900	3,200	41,700	42,500
2001	365,100	d	12,200	2,300	12,500	49,900	2,300	47,600	41,400
2002	407,844	317	13,955	3,289	14,217	56,522	2,808	53,714	46,644
2003	429,983	295	15,463	3,320	14,896	60,715	2,733	57,982	47,561
2004	448,382	315	16,053	3,519	15,434	63,240	2,780	60,460	50,060

(Continued)

**Awards to Disabled Workers**

**Table 38.**  
**Distribution of workers aged 50 or older, by diagnostic group, selected years 1975–2004—Continued**

Year	Diseases of the—								Other	Unknown <sup>c</sup>
	Blood and blood-forming organs	Circulatory system	Digestive system	Genitourinary system	Musculoskeletal system and connective tissue	Nervous system and sense organs	Respiratory system	Skin and subcutaneous tissue		
	<i>Number</i>									
1975	743	147,018	11,618	3,185	80,002	22,634	34,026	1,352	473	--
1981	426	70,716	4,363	2,916	37,563	14,038	18,331	658	d	d
1982	392	59,933	3,306	1,425	31,096	13,004	17,009	460	287	--
1983	501	54,763	2,980	3,949	27,624	12,747	15,544	362	d	d
1984	367	57,383	3,591	1,730	31,531	14,160	16,428	508	506	8,772
1985	418	59,114	2,870	1,557	34,154	14,009	17,442	625	--	13,310
1986	498	59,280	3,242	1,415	37,412	14,033	20,406	538	--	6,522
1987	466	60,240	3,358	2,796	43,288	16,149	19,443	514	--	6,861
1988	552	56,689	3,230	2,874	45,338	16,079	19,302	328	3,782	--
1989	578	56,011	3,492	3,646	48,791	15,860	17,936	424	5,216	--
1990	640	58,428	3,738	4,123	52,433	17,110	18,620	438	4,074	--
1991	686	61,780	4,245	4,437	63,025	18,756	19,725	497	5,097	--
1992	799	71,043	4,690	5,168	70,548	20,832	22,665	497	7,438	--
1993	733	69,583	4,698	5,578	67,335	20,841	22,830	525	8,213	--
1994	788	69,696	4,983	6,691	66,787	22,470	26,029	544	10,047	--
1995	756	65,575	5,131	5,251	89,642	21,663	23,126	744	8,560	--
1996	718	63,601	5,222	5,334	88,768	21,548	22,236	643	9,077	--
1997	762	60,198	5,281	5,427	86,689	22,017	21,197	647	7,871	289
1998	729	60,091	5,730	6,052	91,421	23,200	21,631	615	6,744	290
1999	880	59,690	6,367	6,670	97,452	26,483	22,198	633	5,869	1,152
2000	d	59,500	5,800	6,400	101,700	25,100	20,800	d	4,600	600
2001	d	65,600	8,000	6,400	111,700	24,700	23,100	d	5,400	800
2002	1,010	66,904	7,977	7,763	128,127	30,948	24,370	732	921	4,148
2003	1,003	67,417	8,906	8,230	138,420	32,855	25,344	774	951	3,833
2004	1,050	67,587	9,670	8,428	146,883	33,424	26,025	772	984	4,938

(Continued)



**Table 38.**  
**Distribution of workers aged 50 or older, by diagnostic group, selected years 1975–2004—Continued**

Year	Total	Congenital anomalies	Endocrine, nutritional, and metabolic diseases	Infectious and parasitic diseases <sup>a</sup>	Injuries	Mental disorders <sup>b</sup>			Neoplasms
						Total	Retardation	Other	
<i>Percent</i>									
1975	100.0	0.7	4.1	1.0	3.5	6.1	--	--	10.8
1981	100.0	0.5	4.3	0.6	3.4	5.3	--	--	18.6
1982	100.0	0.5	4.5	0.6	2.9	5.2	--	--	19.2
1983	100.0	0.7	4.9	1.6	2.9	8.0	--	--	19.7
1984	100.0	0.5	4.0	0.8	3.1	9.4	--	--	19.8
1985	100.0	0.5	4.3	0.7	2.8	8.8	--	--	17.5
1986	100.0	0.3	4.6	0.5	0.8	14.9	--	--	16.1
1987	100.0	0.1	3.8	0.6	3.4	9.6	--	--	16.3
1988	100.0	0.1	3.8	0.6	3.7	9.9	--	--	16.4
1989	100.0	0.1	3.5	0.5	3.7	10.3	--	--	17.4
1990	100.0	0.1	3.6	1.1	3.7	10.8	--	--	17.6
1991	100.0	0.1	3.9	1.2	3.6	11.3	--	--	16.4
1992	100.0	0.1	4.5	1.4	3.5	11.9	--	--	15.7
1993	100.0	0.1	4.7	1.4	3.3	12.2	--	--	16.2
1994	100.0	0.1	4.8	1.4	3.2	11.8	--	--	17.2
1995	100.0	0.1	5.5	1.3	3.6	11.7	0.9	10.8	12.5
1996	100.0	0.1	5.7	1.1	3.6	11.2	0.7	10.5	12.5
1997	100.0	0.1	5.9	0.9	3.6	11.6	0.7	10.9	12.7
1998	100.0	0.1	6.1	0.9	3.5	12.4	0.8	11.6	12.5
1999	100.0	0.1	6.0	0.9	3.5	14.5	2.0	12.5	12.1
2000	100.0	d	3.3	1.1	3.7	13.2	0.9	12.2	12.5
2001	100.0	d	3.3	0.6	3.4	13.7	0.6	13.0	11.3
2002	100.0	0.1	3.4	0.8	3.5	13.9	0.7	13.2	11.4
2003	100.0	0.1	3.6	0.8	3.5	14.1	0.6	13.5	11.1
2004	100.0	0.1	3.6	0.8	3.4	14.1	0.6	13.5	11.2

(Continued)

## Awards to Disabled Workers

**Table 38.**  
**Distribution of workers aged 50 or older, by diagnostic group, selected years 1975–2004—Continued**

Year	Diseases of the—								Other	Unknown <sup>c</sup>
	Blood and blood-forming organs	Circulatory system	Digestive system	Genitourinary system	Musculoskeletal system and connective tissue	Nervous system and sense organs	Respiratory system	Skin and subcutaneous tissue		
<i>Percent</i>										
1975	0.2	36.0	2.8	0.8	19.6	5.5	8.3	0.3	0.1	--
1981	0.2	31.8	2.0	1.3	16.9	6.3	8.3	0.3	d	d
1982	0.2	31.7	1.7	0.8	16.4	6.9	9.0	0.2	0.2	--
1983	0.3	28.7	1.6	2.1	14.5	6.7	8.1	0.2	d	d
1984	0.2	26.5	1.7	0.8	14.6	6.5	7.6	0.2	0.2	4.1
1985	0.2	27.0	1.3	0.7	15.6	6.4	8.0	0.3	--	6.1
1986	0.2	25.9	1.4	0.6	16.4	6.1	8.9	0.2	--	2.9
1987	0.2	26.0	1.5	1.2	18.7	7.0	8.4	0.2	--	3.0
1988	0.2	25.0	1.4	1.3	20.0	7.1	8.5	0.1	1.7	--
1989	0.2	23.7	1.5	1.5	20.7	6.7	7.6	0.2	2.2	--
1990	0.3	23.1	1.5	1.6	20.8	6.8	7.4	0.2	1.6	--
1991	0.2	22.0	1.5	1.6	22.4	6.7	7.0	0.2	1.8	--
1992	0.2	22.0	1.4	1.6	21.8	6.4	7.0	0.2	2.3	--
1993	0.2	21.6	1.5	1.7	20.9	6.5	7.1	0.2	2.5	--
1994	0.2	20.6	1.5	2.0	19.7	6.6	7.7	0.2	3.0	--
1995	0.2	19.5	1.5	1.6	26.6	6.4	6.9	0.2	2.5	--
1996	0.2	19.3	1.6	1.6	26.9	6.5	6.7	0.2	2.7	--
1997	0.2	18.7	1.6	1.7	26.9	6.8	6.6	0.2	2.4	0.1
1998	0.2	17.9	1.7	1.8	27.3	6.9	6.5	0.2	2.0	0.1
1999	0.2	16.5	1.8	1.8	27.0	7.3	6.2	0.2	1.6	0.3
2000	d	17.5	1.7	1.9	29.8	7.4	6.1	d	1.3	0.2
2001	d	18.0	2.2	1.8	30.6	6.8	6.3	d	1.5	0.2
2002	0.2	16.4	2.0	1.9	31.4	7.6	6.0	0.2	0.2	1.0
2003	0.2	15.7	2.1	1.9	32.2	7.6	5.9	0.2	0.2	0.9
2004	0.2	15.1	2.2	1.9	32.8	7.5	5.8	0.2	0.2	1.1

SOURCES: Social Security Administration. For years before 2000, *Annual Statistical Supplement to the Social Security Bulletin*, based on the Master Beneficiary Record, various sampling rates; from 2000 to 2001, Annual Award and Termination Transaction file, 1 percent sample; data after 2001 are 100 percent data.

NOTES: Data exclude closed period awards in 2002 and 2003 and expedited reinstatement cases since 2002.

Before 1995, diagnostic data for cases awarded at the appeals levels were estimated on the basis of the diagnosis of cases allowed at the initial disability determination level.

Effective 2001, the Social Security Administration initiated a special review of 130,000 Supplemental Security Income (SSI) recipients who are potentially eligible for Social Security disability benefits because of earnings while receiving SSI. Many of these claims awarded since 2001 were for individuals under the age of 35 who were diagnosed with a mental disorder.

-- = not available.

- a. AIDS and HIV records are counted in "Infectious and parasitic diseases." Before 1990, they were included in "Other."
- b. Mental retardation was not identified separately before 1995.
- c. Beginning with 2002, several ill-defined impairment codes were reclassified and added to "Unknown."
- d. Data not shown to avoid disclosure of information for particular individuals.

CONTACT: Carolyn A. Harrison (410) 965-5522 or di.asr@ssa.gov.

**Table 39.**  
**Average primary insurance amount and average monthly benefit, by sex, selected years**  
**1960–2004 (in dollars)**

Year	Average primary insurance amount			Average monthly benefit		
	All disabled workers	Men	Women	All disabled workers	Men	Women
1960	--	--	--	91.20	94.00	78.90
1965 (Jan.–Aug.)	--	--	--	93.30	97.90	80.30
1965 (Sept.–Dec.)	--	--	--	101.30	106.50	86.80
1970	--	--	--	139.80	148.40	115.70
1975	--	--	--	241.20	263.80	190.90
1980	--	--	--	406.30	449.40	308.50
1985	--	--	--	475.60	530.40	363.70
1986	--	--	--	473.80	531.50	357.40
1987	--	--	--	506.00	573.20	381.60
1988	--	--	--	297.40	321.20	263.50
1989	--	--	--	562.10	634.40	429.90
1990	--	--	--	594.20	667.90	465.80
1991	--	--	--	605.50	685.20	470.60
1992	--	--	--	621.90	699.80	494.20
1993	--	--	--	639.80	720.10	507.70
1994	--	--	--	672.80	757.70	535.00
1995	--	--	--	687.70	786.90	549.00
1996	734.00	836.40	595.70	709.10	807.90	575.60
1997	752.00	855.40	623.50	728.10	824.00	608.80
1998	771.30	879.50	639.50	746.30	846.80	623.80
1999	813.20	922.30	674.70	787.80	890.70	657.10
2000	856.80	975.30	718.70	833.70	947.70	700.90
2001	891.60	1,019.60	739.00	867.70	989.30	722.60
2002	923.90	1,053.00	772.10	898.60	1,021.70	753.90
2003	963.10	1,096.70	805.90	937.50	1,064.90	787.60
2004	994.00	1,130.30	835.70	968.50	1,098.60	817.40

SOURCES: Social Security Administration. For years before 2000, *Annual Statistical Supplement to the Social Security Bulletin*, based on the Master Beneficiary Record, various sampling rates; from 2000 to 2001, Annual Award and Termination Transaction file, 1 percent sample; data after 2001 are 100 percent data.

NOTES: Data exclude closed period awards in 2002 and 2003 and expedited reinstatement cases since 2002.

Benefits awarded before the December cost-of-living increase are converted to the December rates before averages are computed.

-- = not available.

CONTACT: Carolyn A. Harrison (410) 965-5522 or di.asr@ssa.gov.

**Awards to Disabled Workers**

**Table 40.**  
**Distribution, by diagnostic group, sex, and age, 2004**

Diagnostic group	Total				Men				Women			
	All ages	Under 35	35-49	50 or older	All ages	Under 35	35-49	50 or older	All ages	Under 35	35-49	50 or older
	<b>Number</b>											
Total	775,244	89,644	237,218	448,382	416,560	47,234	121,313	248,013	358,684	42,410	115,905	200,369
Congenital anomalies	1,166	501	350	315	620	257	185	178	546	244	165	137
Endocrine, nutritional, and metabolic diseases	24,341	1,781	6,507	16,053	12,906	857	3,292	8,757	11,435	924	3,215	7,296
Infectious and parasitic diseases	10,510	1,517	5,474	3,519	7,409	1,021	4,127	2,261	3,101	496	1,347	1,258
Injuries	29,580	4,363	9,783	15,434	19,420	3,118	6,588	9,714	10,160	1,245	3,195	5,720
Mental disorders												
Retardation	20,479	10,448	7,251	2,780	12,401	6,148	4,491	1,762	8,078	4,300	2,760	1,018
Other	172,353	40,243	71,650	60,460	81,794	20,625	31,928	29,241	90,559	19,618	39,722	31,219
Neoplasms	73,637	3,932	19,645	50,060	38,335	1,966	8,974	27,395	35,302	1,966	10,671	22,665
Diseases of the—												
Blood and blood-forming organs	2,479	703	726	1,050	1,191	325	315	551	1,288	378	411	499
Circulatory system	85,449	2,184	15,678	67,587	58,577	1,188	10,085	47,304	26,872	996	5,593	20,283
Digestive system	18,045	1,263	7,112	9,670	11,144	584	4,350	6,210	6,901	679	2,762	3,460
Genitourinary system	16,869	2,422	6,019	8,428	10,376	1,383	3,696	5,297	6,493	1,039	2,323	3,131
Musculoskeletal system and connective tissue	210,315	8,293	55,139	146,883	106,200	3,906	28,226	74,068	104,115	4,387	26,913	72,815
Nervous system and sense organs	64,566	9,659	21,483	33,424	33,057	4,803	10,493	17,761	31,509	4,856	10,990	15,663
Respiratory system	32,562	812	5,725	26,025	16,830	330	2,456	14,044	15,732	482	3,269	11,981
Skin and subcutaneous tissue	1,709	268	669	772	762	93	289	380	947	175	380	392
Other	1,909	240	685	984	867	141	296	430	1,042	99	389	554
Unknown	9,275	1,015	3,322	4,938	4,671	489	1,522	2,660	4,604	526	1,800	2,278

(Continued)

**Table 40.**  
**Distribution, by diagnostic group, sex, and age, 2004—Continued**

Diagnostic group	Total				Men				Women			
	All ages	Under 35	35–49	50 or older	All ages	Under 35	35–49	50 or older	All ages	Under 35	35–49	50 or older
	<i>Percent</i>											
Total	100.0	100.0	100.0	100.0	100.0	100.0	100.0	100.0	100.0	100.0	100.0	100.0
Congenital anomalies	0.2	0.6	0.1	0.1	0.1	0.5	0.2	0.1	0.2	0.6	0.1	0.1
Endocrine, nutritional, and metabolic diseases	3.1	2.0	2.7	3.6	3.1	1.8	2.7	3.5	3.2	2.2	2.8	3.6
Infectious and parasitic diseases	1.4	1.7	2.3	0.8	1.8	2.2	3.4	0.9	0.9	1.2	1.2	0.6
Injuries	3.8	4.9	4.1	3.4	4.7	6.6	5.4	3.9	2.8	2.9	2.8	2.9
Mental disorders												
Retardation	2.6	11.7	3.1	0.6	3.0	13.0	3.7	0.7	2.3	10.1	2.4	0.5
Other	22.2	44.9	30.2	13.5	19.6	43.7	26.3	11.8	25.2	46.3	34.3	15.6
Neoplasms	9.5	4.4	8.3	11.2	9.2	4.2	7.4	11.0	9.8	4.6	9.2	11.3
Diseases of the—												
Blood and blood-forming organs	0.3	0.8	0.3	0.2	0.3	0.7	0.3	0.2	0.4	0.9	0.4	0.2
Circulatory system	11.0	2.4	6.6	15.1	14.1	2.5	8.3	19.1	7.5	2.3	4.8	10.1
Digestive system	2.3	1.4	3.0	2.2	2.7	1.2	3.6	2.5	1.9	1.6	2.4	1.7
Genitourinary system	2.2	2.7	2.5	1.9	2.5	2.9	3.0	2.1	1.8	2.4	2.0	1.6
Musculoskeletal system and connective tissue	27.1	9.3	23.2	32.8	25.5	8.3	23.3	29.9	29.0	10.3	23.2	36.3
Nervous system and sense organs	8.3	10.8	9.1	7.5	7.9	10.2	8.6	7.2	8.8	11.5	9.5	7.8
Respiratory system	4.2	0.9	2.4	5.8	4.0	0.7	2.0	5.7	4.4	1.1	2.8	6.0
Skin and subcutaneous tissue	0.2	0.3	0.3	0.2	0.2	0.2	0.2	0.2	0.3	0.4	0.3	0.2
Other	0.2	0.3	0.3	0.2	0.2	0.3	0.2	0.2	0.3	0.2	0.3	0.3
Unknown	1.2	1.1	1.4	1.1	1.1	1.0	1.3	1.1	1.3	1.2	1.6	1.1

SOURCE: Social Security Administration, Annual Award and Termination Transaction file, 100 percent data.

NOTES: Data exclude expedited reinstatement cases.

Effective 2001, the Social Security Administration initiated a special review of 130,000 Supplemental Security Income (SSI) recipients who are potentially eligible for Social Security disability benefits because of earnings while receiving SSI. Many of these claims awarded since 2001 were for individuals under the age of 35 who were diagnosed with a mental disorder.

CONTACT: Carolyn A. Harrison (410) 965-5522 or di.asr@ssa.gov.

## Awards to Disabled Workers

**Table 41.**  
**Distribution, by monthly benefit and sex, 2004**

Monthly benefit (dollars)	All disabled workers		Men		Women	
	Number	Percent	Number	Percent	Number	Percent
Total	775,244	100.0	416,560	100.0	358,684	100.0
Less than 100.00	5,480	0.7	2,958	0.7	2,522	0.7
100.00–199.90	9,606	1.2	3,468	0.8	6,138	1.7
200.00–299.90	23,927	3.1	8,692	2.1	15,235	4.2
300.00–399.90	29,460	3.8	10,658	2.6	18,802	5.2
400.00–499.90	32,230	4.2	11,763	2.8	20,467	5.7
500.00–599.90	53,414	6.9	19,091	4.6	34,323	9.6
600.00–699.90	82,179	10.6	30,814	7.4	51,365	14.3
700.00–799.90	77,558	10.0	32,286	7.8	45,272	12.6
800.00–899.90	70,857	9.1	32,836	7.9	38,021	10.6
900.00–999.90	62,558	8.1	31,899	7.7	30,659	8.5
1,000.00–1,099.90	55,404	7.1	31,159	7.5	24,245	6.8
1,100.00–1,199.90	47,243	6.1	29,163	7.0	18,080	5.0
1,200.00–1,299.90	40,842	5.3	27,095	6.5	13,747	3.8
1,300.00–1,399.90	35,007	4.5	24,563	5.9	10,444	2.9
1,400.00–1,499.90	29,320	3.8	21,522	5.2	7,798	2.2
1,500.00–1,599.90	29,945	3.9	22,957	5.5	6,988	1.9
1,600.00 or more	90,214	11.6	75,636	18.2	14,578	4.1
Average benefit (dollars)		968.50		1,098.60		817.40

SOURCE: Social Security Administration, Annual Award and Termination Transaction file, 100 percent data.

NOTES: Benefits awarded before the December cost-of-living increase are converted to the December rates before averages are computed.

Data exclude expedited reinstatement cases.

CONTACT: Carolyn A. Harrison (410) 965-5522 or di.asr@ssa.gov.

**Table 42.**  
**Number, average primary insurance amount, and average monthly family benefit, by family composition, 2004**

Family composition	Number of families	Number of beneficiaries	Average primary insurance amount (dollars)	Average monthly family benefit (dollars)	Percentage of families receiving maximum family benefit <sup>a</sup>
Worker only					
Men	327,372	327,372	1,126.00	1,095.70	10.3
Women	298,632	298,632	833.20	815.00	22.0
Worker with children					
By sex of worker					
Men	71,126	190,177	1,122.70	1,600.70	85.9
Women	58,716	156,434	847.00	1,151.10	89.5
By number of children					
1 child	69,711	139,422	1,016.70	1,410.40	85.4
2 children	40,674	122,022	996.00	1,415.30	90.3
3 or more children	19,457	85,167	935.30	1,313.60	89.3
Worker with—					
Spouse aged 62 or older <sup>b</sup>	5,893	11,812	1,422.10	1,698.80	8.7
Spouse aged 62 or older and 1 or more children	147	478	1,273.40	2,044.50	66.0
Spouse and 1 child	4,557	13,674	1,161.00	1,677.30	87.0
Spouse and 2 children	4,707	18,830	1,144.50	1,638.80	86.5
Spouse and 3 or more children	3,775	20,991	1,057.30	1,500.90	83.5

SOURCE: Social Security Administration, Annual Award and Termination Transaction file, 100 percent data.

NOTES: A family means beneficiaries entitled on one worker's account. The data may understate the number of families with dependents because records of awards to dependents made in a different calendar year are not available for inclusion.

Data exclude expedited reinstatement cases; they include beneficiaries whose benefits are being withheld.

a. Includes families and worker-only beneficiaries for whom the primary insurance amount is equal to the family maximum amount.

b. If the spouse is also entitled to a retired-worker benefit, only the benefit amount received as a spouse is included.

CONTACT: Carolyn A. Harrison (410) 965-5522 or di.asr@ssa.gov.

## Awards to Disabled-Worker Families

**Table 43.**  
**Distribution, by family composition and age of worker, 2004**

Family composition	Total, all ages	Under 30	30–34	35–39	40–44	45–49	50–54	55–59	60 or older
<b>Number</b>									
Worker only	626,004	41,259	22,547	30,102	50,254	77,030	120,077	162,376	122,359
Worker with—									
Spouse									
Aged 62 or older <sup>a</sup>	6,040	0	0	0	7	20	162	892	4,959
Child in care	13,039	752	1,354	2,033	2,591	2,400	1,925	1,374	610
Children									
1 child	69,711	4,981	5,129	7,641	13,087	14,386	12,725	8,500	3,262
2 children	40,674	3,066	5,172	8,336	9,868	7,284	4,251	2,078	619
3 or more children	19,457	1,692	3,654	5,072	4,472	2,514	1,222	645	186
Families receiving maximum benefit <sup>b</sup>	225,050	32,506	20,937	28,517	36,863	34,882	31,377	26,864	13,104
<b>Percent</b>									
Worker only	100.0	6.6	3.6	4.8	8.0	12.3	19.2	25.9	19.5
Worker with—									
Spouse									
Aged 62 or older <sup>a</sup>	100.0	0	0	0	0.1	0.3	2.7	14.8	82.1
Child in care	100.0	5.8	10.4	15.6	19.9	18.4	14.8	10.5	4.7
Children									
1 child	100.0	7.1	7.4	11.0	18.8	20.6	18.3	12.2	4.7
2 children	100.0	7.5	12.7	20.5	24.3	17.9	10.5	5.1	1.5
3 or more children	100.0	8.7	18.8	26.1	23.0	12.9	6.3	3.3	1.0
Families receiving maximum benefit <sup>b</sup>	29.0	62.8	55.3	53.6	45.9	33.7	22.4	15.3	9.9

SOURCE: Social Security Administration, Annual Award and Termination Transaction file, 100 percent data.

NOTES: A family means beneficiaries entitled on one worker's account. The data may understate the number of families with dependents because records of awards to dependents made in a different calendar year are not available for inclusion.

Data exclude expedited reinstatement cases; they include beneficiaries whose benefits are being withheld.

a. Includes spouses aged 62 or older with children.

b. Includes families and worker-only beneficiaries for whom the primary insurance amount is equal to the family maximum amount.

CONTACT: Carolyn A. Harrison (410) 965-5522 or di.asr@ssa.gov.



**Benefits Withheld from All Disabled Beneficiaries**

**Table 44.**  
**Number, by reason for withholding benefit, December 2004**

Reason	All beneficiaries	Workers and nondisabled dependents				Widow(er)s	Adult children of—		
		Workers	Spouses	Children under age 18	Students aged 18–19		Disabled workers	Retired workers	Deceased workers
Total	574,865	105,643	52,852	227,205	2,784	4,579	22,059	91,303	68,440
Address unknown	20,445	10,105	429	7,045	115	318	321	360	1,752
Determination of continuing disability pending	6,667	4,438	141	1,687	13	9	113	47	219
Recoupment of overpayment	14,277	5,883	753	6,752	157	242	113	72	305
Workers' compensation offset	5,721	1,666	408	3,542	34	...	71	...	...
Payee not determined	6,722	1,910	6	3,671	10	36	98	154	837
Substantial gainful activity	34,688	23,709	770	9,137	35	109	375	175	378
Imprisoned or confined	43,281	34,550	272	167	24	140	1,377	1,105	5,646
Entitled child not in care	9,677	...	9,640	...	...	37	...	...	...
Beneficiary earnings	29,134	...	28,984	137	13	...	...	...	...
Earnings of the other beneficiaries	150	...	...	...	...	...	...	150	...
Government pension offset	2,765	...	2,212	...	...	553	...	...	...
Technical entitlement	353,924	...	7,615	179,816	2,106	2,473	17,455	88,044	56,415
Other	47,414	23,382	1,622	15,251	277	662	2,136	1,196	2,888

SOURCE: Social Security Administration, Disabled Beneficiaries and Dependents Master Beneficiary Record file, 100 percent data.

NOTES: These data represent the total number of beneficiaries with benefits withheld in December 2004 regardless of when their benefits were initially withheld.

... = not applicable.

CONTACT: Carolyn A. Harrison (410) 965-5522 or di.asr@ssa.gov.

## Benefits Terminated for All Disabled Beneficiaries

**Table 45.**  
**Number and rate, 1960–2004**

Year	Total		Workers		Widow(er)s		Adult children	
	Number	Rate	Number	Rate	Number	Rate	Number	Rate
1960	91,543	164	89,090	196	--	--	2,453	24
1961	118,842	160	115,546	187	--	--	3,296	27
1962	132,144	149	128,299	173	--	--	3,845	26
1963	143,008	144	137,850	167	--	--	5,158	31
1964	144,422	134	138,576	155	--	--	5,846	32
1965	163,276	138	156,648	159	--	--	6,628	33
1966	175,959	134	168,630	154	--	--	7,329	34
1967	218,077	153	208,899	175	--	--	9,178	40
1968	232,817	151	222,197	172	--	--	10,620	44
1969	263,191	159	251,269	180	--	--	11,922	46
1970	272,239	154	260,444	174	--	--	11,795	44
1971	278,092	144	266,471	162	--	--	11,621	41
1972	275,663	129	261,739	143	--	--	13,924	46
1973	317,237	136	304,792	151	--	--	12,445	39
1974	336,246	130	320,958	143	--	--	15,288	45
1975	344,727	121	329,532	132	--	--	15,195	42
1976	367,608	120	351,504	132	--	--	16,104	42
1977	418,394	129	401,334	141	--	--	17,060	42
1978	431,067	131	413,571	144	--	--	17,496	42
1979	441,101	133	422,503	147	--	--	18,598	43
1980	422,612	128	408,051	143	--	--	14,561	32
1981	449,669	139	434,187	156	--	--	15,482	33
1982	500,282	163	483,847	186	--	--	16,435	35
1983	473,327	155	453,621	177	--	--	19,706	40
1984	391,190	126	371,913	143	--	--	19,277	38
1985	357,006	112	339,984	128	--	--	17,022	32
1986	358,289	109	341,276	125	--	--	17,013	31
1987	365,004	109	347,948	125	--	--	17,056	30
1988	375,621	110	356,143	126	--	--	19,478	34
1989	371,128	107	351,402	121	--	--	19,726	34
1990	368,208	102	348,194	116	--	--	20,014	33
1991	369,026	97	351,303	110	--	--	17,723	29
1992	379,653	92	361,796	104	--	--	17,857	28
1993	391,159	89	372,317	100	--	--	18,842	29
1994	404,624	87	384,590	97	--	--	20,034	30

(Continued)

**Table 45.**  
**Number and rate, 1960–2004—Continued**

Year	Total		Workers		Widow(er)s		Adult children	
	Number	Rate	Number	Rate	Number	Rate	Number	Rate
1995	422,114	87	399,475	95	--	--	22,639	33
1996	420,756	83	396,980	91	--	--	23,776	34
1997	491,194	94	464,984	103	--	--	26,210	37
1998	436,244	81	409,489	87	--	--	26,755	38
1999	463,394	83	433,950	89	--	--	29,444	41
2000	493,651	86	460,351	91	--	--	33,300	46
2001	513,472	83	459,073	87	21,411	105	32,988	45
2002	535,465	82	479,364	87	21,379	103	34,722	47
2003	501,222	73	447,485	76	20,707	99	33,030	44
2004 <sup>a</sup>	525,418	73	470,017	76	23,572	112	31,829	42

SOURCES: Social Security Administration. For years before 2000, *Annual Statistical Supplement to the Social Security Bulletin*, based on the Master Beneficiary Record, various sampling rates; for 2000, Social Security Disability Insurance Beneficiaries, 100 percent data, and Annual Termination file, 100 percent data; from 2001 to 2003, Disabled Beneficiaries and Dependents Master Beneficiary Record file, 100 percent data; in 2004, Annual Award and Termination Transaction file, 100 percent data, and Disabled Beneficiaries and Dependents Master Beneficiary Record file, 100 percent data.

NOTES: The termination rate is the number of terminations per 1,000 beneficiaries in current-payment status.

-- = not available.

a. Data include closed period awards.

CONTACT: Carolyn A. Harrison (410) 965-5522 or di.asr@ssa.gov.

## Benefits Terminated for All Disabled Beneficiaries

**Table 46.**  
**Number, by reason for termination, 2004**

Reason for termination	All beneficiaries	Workers and nondisabled dependents				Widow(er)s	Adult children of—		
		Workers	Spouses	Children under age 18	Students aged 18–19		Disabled workers	Retired workers	Deceased workers
Total	961,581	470,017	48,951	284,617	102,595	23,572	8,834	4,682	18,313
Death of beneficiary	214,967	188,205	1,439	753	61	6,448	589	3,120	14,352
Termination resulting from death of worker <sup>a</sup>	49,846	...	7,201	38,752	1,509	...	2,384	...	...
Attainment of age—									
18 by children	193,534	...	...	193,534	...	...	...	...	...
19 by students	12,869	...	...	...	12,869	...	...	...	...
FRA by disabled workers	233,894	206,346	17,672	6,157	321	...	3,398	...	...
FRA by disabled widow(er)s	16,273	...	...	...	...	16,273	...	...	...
Elected reduced retirement	1,082	1,082	...	...	...	...	...	...	...
Termination of spouse's benefit because child attains age 16	16,497	...	16,497	...	...	...	...	...	...
Marriage, remarriage, or divorce of beneficiary	5,386	...	1,899	2,012	196	11	425	248	595
Entitlement to an equal or larger Social Security benefit	2,393	...	1,087	201	12	315	130	275	373
Does not meet medical standards <sup>b</sup>	116,371	54,061	2,745	41,955	12,011	229	1,716	889	2,765
Medical improvement <sup>c</sup>	--	25,256	--	--	--	59	638	229	901
Work above substantial gainful activity <sup>d</sup>	--	28,613	--	--	--	166	965	593	1,710
Miscellaneous reasons <sup>e</sup>	--	192	--	--	--	4	113	67	154
Student no longer attending school	75,583	...	...	...	75,583	...	...	...	...
Other	22,886	20,323	411	1,253	33	296	192	150	228

SOURCE: Social Security Administration, Annual Award and Termination Transaction file, 100 percent data.

NOTES: These data represent the total number of beneficiaries whose benefits were terminated during the calendar year regardless of the effective date of the termination.

Data include closed period awards.

... = not applicable; FRA = full retirement age; -- = not available.

- Beneficiaries are terminated from the Disability Trust Fund and start receiving benefits from the Retirement Survivor Trust Fund.
- Dependents' benefits terminate when the disabled worker no longer meets the requirements for disability benefits. Disabled widow(er)s and disabled adult children of deceased or retired workers lose their benefits when they no longer meet the requirements for disability benefits.
- Includes beneficiaries who medically improved, who did not cooperate during the medical review, or whose whereabouts are unknown.
- Excludes disabled beneficiaries whose monthly benefits have been suspended because they are engaging in substantial gainful activity during the extended period of eligibility.
- Includes beneficiaries who did not comply with alcohol or drug abuse treatment programs or who refused vocational rehabilitation services.

CONTACT: Carolyn A. Harrison (410) 965-5522 or di.asr@ssa.gov.

**Table 47.**  
**Number and rate, by state or other area, 2004**

State or area	Total		Workers		Widow(er)s		Adult children	
	Number	Rate	Number	Rate	Number	Rate	Number	Rate
All areas	525,418	73	470,017	76	23,572	112	31,829	42
Alabama	12,291	67	10,794	68	654	98	843	49
Alaska	732	72	667	73	34	140	31	41
Arizona	9,223	73	8,509	74	331	106	383	43
Arkansas	8,053	73	7,181	74	417	107	455	50
California	43,783	72	40,009	76	1,502	107	2,272	36
Colorado	5,748	75	5,304	77	177	101	267	46
Connecticut	5,562	76	5,037	81	187	122	338	36
Delaware	1,564	71	1,427	73	66	129	71	37
District of Columbia	861	78	770	82	36	143	55	42
Florida	33,591	79	30,816	82	1,343	117	1,432	42
Georgia	17,113	80	15,298	82	888	123	927	46
Hawaii	1,507	73	1,386	78	47	100	74	32
Idaho	2,266	74	2,072	76	75	96	119	45
Illinois	18,615	74	16,462	78	852	115	1,301	40
Indiana	11,806	75	10,451	78	539	111	816	48
Iowa	4,963	74	4,336	77	222	134	405	47
Kansas	4,431	76	3,918	77	199	128	314	52
Kentucky	11,373	64	9,864	64	695	99	814	50
Louisiana	9,800	73	8,447	76	626	107	727	40
Maine	3,090	62	2,778	63	138	118	174	38
Maryland	8,016	81	7,294	85	292	123	430	40
Massachusetts	11,185	67	9,992	69	373	112	820	46
Michigan	18,721	70	16,430	72	928	115	1,363	41
Minnesota	6,925	70	6,163	72	209	115	553	48
Mississippi	8,454	71	7,470	73	459	100	525	44
Missouri	12,831	74	11,408	75	578	106	845	52
Montana	1,823	81	1,633	83	79	133	111	51
Nebraska	2,943	81	2,645	85	99	120	199	47
Nevada	3,888	82	3,674	84	112	97	102	39
New Hampshire	2,379	69	2,151	70	98	133	130	46
New Jersey	13,671	80	12,320	84	528	128	823	41
New Mexico	3,250	69	2,948	71	133	109	169	39
New York	33,578	74	30,002	77	1,321	109	2,255	40
North Carolina	19,915	74	17,887	75	967	114	1,061	45
North Dakota	967	76	853	81	29	99	85	42
Ohio	21,139	77	18,492	80	1,095	119	1,552	44
Oklahoma	7,396	76	6,593	78	403	122	400	43
Oregon	6,100	76	5,581	78	215	106	304	42
Pennsylvania	22,535	69	19,926	72	1,017	104	1,592	41
Rhode Island	2,081	66	1,896	68	64	94	121	39

(Continued)

## Benefits Terminated for All Disabled Beneficiaries

**Table 47.**  
**Number and rate, by state or other area, 2004—Continued**

State or area	Total		Workers		Widow(er)s		Adult children	
	Number	Rate	Number	Rate	Number	Rate	Number	Rate
South Carolina	10,408	73	9,376	75	543	108	489	37
South Dakota	1,213	74	1,065	77	55	143	93	45
Tennessee	14,797	74	13,096	76	857	114	844	45
Texas	30,473	75	27,402	78	1,492	109	1,579	38
Utah	2,426	78	2,185	80	91	128	150	44
Vermont	1,280	74	1,147	77	44	99	89	47
Virginia	12,714	71	11,312	72	655	117	747	43
Washington	9,280	71	8,503	74	334	109	443	37
West Virginia	5,665	63	4,832	64	339	92	494	49
Wisconsin	8,841	72	7,772	74	356	132	713	45
Wyoming	877	85	787	86	42	179	48	54
Outlying areas								
Puerto Rico	11,074	68	9,744	72	581	114	749	33
Other <sup>a</sup>	2,201	97	1,912	118	156	172	133	24

SOURCES: Social Security Administration, Annual Award and Termination Transaction file, 100 percent data, and Disabled Beneficiaries and Dependents Master Beneficiary Record file, 100 percent data.

NOTES: The termination rate is the number of terminations per 1,000 beneficiaries in current-payment status.

Data includes closed period awards.

a. Includes American Samoa, Guam, Northern Mariana Islands, Virgin Islands, and foreign countries.

CONTACT: Carolyn A. Harrison (410) 965-5522 or di.asr@ssa.gov.

**Table 48.**  
**Distribution of workers with benefits withheld because of substantial work, by diagnostic group and age, December 2004**

Diagnostic group	Total	Under 30	30-39	40-49	50-59	60-FRA
	<i>Number</i>					
Total	23,709	2,413	4,908	8,016	6,525	1,847
Congenital anomalies	65	25	19	13	a	a
Endocrine, nutritional, and metabolic diseases	653	32	113	254	188	66
Infectious and parasitic diseases	794	26	205	385	161	17
Injuries	1,620	203	387	466	441	123
Mental disorders						
Retardation	831	335	239	189	62	6
Other	7,085	807	1,748	2,616	1,671	243
Neoplasms	2,295	183	369	699	790	254
Diseases of the—						
Blood and blood-forming organs	153	34	35	45	34	5
Circulatory system	1,184	40	125	286	503	230
Digestive system	541	33	76	188	213	31
Genitourinary system	873	100	230	327	165	51
Musculoskeletal system and connective tissue	4,261	101	546	1,464	1,553	597
Nervous system and sense organs	2,397	422	658	744	451	122
Respiratory system	329	14	40	109	112	54
Skin and subcutaneous tissue	66	a	13	24	19	a
Other	52	a	13	17	a	a
Unknown	510	46	92	190	147	35

(Continued)

## Disabled Workers Who Work

**Table 48.**

**Distribution of workers with benefits withheld because of substantial work, by diagnostic group and age, December 2004—Continued**

Diagnostic group	Total	Under 30	30–39	40–49	50–59	60–FRA
	<i>Percent</i>					
Total	100.0	100.0	100.0	100.0	100.0	100.0
Congenital anomalies	0.3	1.0	0.4	0.2	a	a
Endocrine, nutritional, and metabolic diseases	2.8	1.3	2.3	3.2	2.9	3.6
Infectious and parasitic diseases	3.3	1.1	4.2	4.8	2.5	0.9
Injuries	6.8	8.4	7.9	5.8	6.8	6.7
Mental disorders						
Retardation	3.5	13.9	4.9	2.4	1.0	0.3
Other	29.9	33.4	35.6	32.6	25.6	13.2
Neoplasms	9.7	7.6	7.5	8.7	12.1	13.8
Diseases of the—						
Blood and blood-forming organs	0.6	1.4	0.7	0.6	0.5	0.3
Circulatory system	5.0	1.7	2.5	3.6	7.7	12.5
Digestive system	2.3	1.4	1.5	2.3	3.3	1.7
Genitourinary system	3.7	4.1	4.7	4.1	2.5	2.8
Musculoskeletal system and connective tissue	18.0	4.2	11.1	18.3	23.8	32.3
Nervous system and sense organs	10.1	17.5	13.4	9.3	6.9	6.6
Respiratory system	1.4	0.6	0.8	1.4	1.7	2.9
Skin and subcutaneous tissue	0.3	a	0.3	0.3	0.3	a
Other	0.2	a	0.3	0.2	a	a
Unknown	2.2	1.9	1.9	2.4	2.3	1.9

SOURCE: Social Security Administration, Disabled Beneficiaries and Dependents Master Beneficiary Record file, 100 percent data.

NOTES: These data represent the total number of beneficiaries with benefits withheld in December 2004 regardless of when their benefits were initially withheld.

FRA = full retirement age.

a. Data not shown to avoid disclosure of information for particular individuals.

CONTACT: Carolyn A. Harrison (410) 965-5522 or di.asr@ssa.gov.



**Table 49.**  
**Distribution of workers with benefits terminated because of successful return to work,**  
**by diagnostic group and age, 2004**

Diagnostic group	Total	Under 30	30–39	40–49	50–59	60 or older
	<i>Number</i>					
Total	28,613	2,142	6,978	10,104	7,360	2,029
Congenital anomalies	86	26	31	22	a	a
Endocrine, nutritional, and metabolic diseases	1,011	34	174	379	338	86
Infectious and parasitic diseases	1,306	19	357	659	238	33
Injuries	1,703	144	510	580	358	111
Mental disorders						
Retardation	1,853	405	721	520	186	21
Other	9,034	660	2,417	3,451	2,174	332
Neoplasms	1,283	82	219	368	497	117
Diseases of the—						
Blood and blood-forming organs	215	38	71	60	37	9
Circulatory system	1,180	35	124	277	480	264
Digestive system	484	20	82	177	166	39
Genitourinary system	960	75	311	338	199	37
Musculoskeletal system and connective tissue	4,679	105	580	1,684	1,612	698
Nervous system and sense organs	3,263	401	1,041	1,038	631	152
Respiratory system	347	16	62	102	119	48
Skin and subcutaneous tissue	64	a	16	26	14	a
Other	57	a	11	20	a	a
Unknown	1,088	75	251	403	293	66
	<i>Percent</i>					
Total	100.0	100.0	100.0	100.0	100.0	100.0
Congenital anomalies	0.3	1.2	0.4	0.2	a	a
Endocrine, nutritional, and metabolic diseases	3.5	1.6	2.5	3.8	4.6	4.2
Infectious and parasitic diseases	4.6	0.9	5.1	6.5	3.2	1.6
Injuries	6.0	6.7	7.3	5.7	4.9	5.5
Mental disorders						
Retardation	6.5	18.9	10.3	5.1	2.5	1.0
Other	31.6	30.8	34.6	34.2	29.5	16.4
Neoplasms	4.5	3.8	3.1	3.6	6.8	5.8
Diseases of the—						
Blood and blood-forming organs	0.8	1.8	1.0	0.6	0.5	0.4
Circulatory system	4.1	1.6	1.8	2.7	6.5	13.0
Digestive system	1.7	0.9	1.2	1.8	2.3	1.9
Genitourinary system	3.4	3.5	4.5	3.3	2.7	1.8
Musculoskeletal system and connective tissue	16.4	4.9	8.3	16.7	21.9	34.4
Nervous system and sense organs	11.4	18.7	14.9	10.3	8.6	7.5
Respiratory system	1.2	0.7	0.9	1.0	1.6	2.4
Skin and subcutaneous tissue	0.2	a	0.2	0.3	0.2	a
Other	0.2	a	0.2	0.2	a	a
Unknown	3.8	3.5	3.6	4.0	4.0	3.3

SOURCE: Social Security Administration, Annual Award and Termination Transaction file, 100 percent data.

a. Data not shown to avoid disclosure of information for particular individuals.

CONTACT: Carolyn A. Harrison (410) 965-5522 or di.asr@ssa.gov.

## Disabled Workers Who Work

**Table 50.**

**Average monthly benefit for workers with benefits withheld, by diagnostic group and age, December 2004 (in dollars)**

Diagnostic group	Total	Under 30	30–39	40–49	50–59	60–FRA
Total	1,008.10	786.50	938.80	1,023.40	1,096.20	1,104.20
Congenital anomalies	896.20	808.80	868.40	965.00	1,100.80	1,160.50
Endocrine, nutritional, and metabolic diseases	915.20	721.50	918.30	906.40	931.10	992.70
Infectious and parasitic diseases	1,031.00	874.00	986.00	1,048.20	1,064.00	1,111.10
Injuries	1,092.50	938.90	1,039.40	1,118.40	1,165.90	1,152.40
Mental disorders						
Retardation	695.80	661.10	701.80	739.00	720.80	769.60
Other	931.20	749.80	878.30	950.90	1,022.90	1,071.10
Neoplasms	1,226.90	905.10	1,167.20	1,271.70	1,288.00	1,232.50
Diseases of the—						
Blood and blood-forming organs	1,080.20	835.80	1,034.40	1,236.30	1,156.40	1,137.70
Circulatory system	1,123.80	829.10	1,021.10	1,097.60	1,179.70	1,141.20
Digestive system	1,158.00	833.00	1,065.60	1,134.20	1,233.10	1,358.20
Genitourinary system	1,097.70	915.50	986.90	1,135.80	1,249.40	1,220.60
Musculoskeletal system and connective tissue	1,006.30	792.90	945.00	1,000.00	1,036.80	1,034.30
Nervous system and sense organs	984.50	791.30	938.70	1,026.70	1,119.80	1,143.00
Respiratory system	993.30	825.70	896.10	957.50	1,037.40	1,089.80
Skin and subcutaneous tissue	1,036.20	771.00	954.80	1,068.60	1,131.00	1,054.40
Other	958.80	715.10	818.00	1,030.20	1,102.40	1,065.70
Unknown	964.00	737.70	924.70	1,000.60	1,018.00	939.70

SOURCE: Social Security Administration, Disabled Beneficiaries and Dependents Master Beneficiary Record file, 100 percent data.

NOTE: FRA = full retirement age.

CONTACT: Carolyn A. Harrison (410) 965-5522 or di.asr@ssa.gov.

**Table 51.**  
**Average monthly benefit for workers with benefits terminated, by diagnostic group and age, 2004**  
**(in dollars)**

Diagnostic group	Total	Under 30	30–39	40–49	50–59	60 or older
Total	892.00	757.50	841.60	896.00	954.20	961.90
Congenital anomalies	806.60	752.20	884.20	766.20	760.40	815.70
Endocrine, nutritional, and metabolic diseases	846.80	819.10	830.30	813.10	883.50	895.70
Infectious and parasitic diseases	964.90	951.20	901.90	996.70	987.30	855.70
Injuries	986.20	886.70	969.00	965.00	1,052.30	1,091.70
Mental disorders						
Retardation	687.10	655.20	686.00	678.30	776.10	765.50
Other	841.90	728.20	793.90	851.50	900.70	932.50
Neoplasms	1,087.10	901.80	1,038.90	1,115.40	1,122.80	1,067.30
Diseases of the—						
Blood and blood-forming organs	942.90	791.90	870.80	994.80	1,069.80	1,280.70
Circulatory system	998.70	833.10	918.60	973.60	1,010.30	1,063.70
Digestive system	1,026.80	717.40	933.40	1,015.40	1,107.60	1,090.30
Genitourinary system	985.80	869.60	910.70	1,012.50	1,093.10	1,030.50
Musculoskeletal system and connective tissue	902.10	758.60	872.00	902.70	919.00	908.10
Nervous system and sense organs	909.70	792.70	881.00	920.30	994.30	991.00
Respiratory system	874.50	747.70	879.70	865.40	921.30	813.30
Skin and subcutaneous tissue	930.40	784.50	908.20	880.80	1,070.60	954.60
Other	972.30	948.80	828.10	944.90	1,125.10	963.10
Unknown	875.10	734.80	825.60	874.90	934.30	961.60

SOURCE: Social Security Administration, Annual Award and Termination Transaction file, 100 percent data.

CONTACT: Carolyn A. Harrison (410) 965-5522 or di.asr@ssa.gov.

## Disabled Workers Who Work

**Table 52.**  
**Distribution, by state or other area, 2004**

State or area	All workers, December	Workers with benefits withheld because of substantial work, December		Workers with benefits terminated because of successful return to work, calendar year	
		Number	Percentage of all workers	Number	Percentage of all workers
All areas	6,197,385	23,709	0.4	28,613	0.5
Alabama	158,703	231	0.1	354	0.2
Alaska	9,150	45	0.5	54	0.6
Arizona	114,578	593	0.5	565	0.5
Arkansas	97,653	221	0.2	287	0.3
California	528,609	2,273	0.4	2,781	0.5
Colorado	68,862	330	0.5	520	0.8
Connecticut	62,517	371	0.6	371	0.6
Delaware	19,473	93	0.5	127	0.7
District of Columbia	9,436	26	0.3	67	0.7
Florida	378,099	1,185	0.3	1,534	0.4
Georgia	186,943	353	0.2	570	0.3
Hawaii	17,740	79	0.4	72	0.4
Idaho	27,302	93	0.3	147	0.5
Illinois	212,168	1,072	0.5	1,337	0.6
Indiana	134,461	468	0.3	545	0.4
Iowa	56,604	258	0.5	284	0.5
Kansas	50,782	245	0.5	249	0.5
Kentucky	153,184	399	0.3	364	0.2
Louisiana	110,422	347	0.3	411	0.4
Maine	44,038	218	0.5	252	0.6
Maryland	85,926	284	0.3	549	0.6
Massachusetts	145,391	899	0.6	1,099	0.8
Michigan	227,568	869	0.4	1,102	0.5
Minnesota	85,488	488	0.6	586	0.7
Mississippi	102,132	194	0.2	290	0.3
Missouri	152,857	531	0.3	629	0.4
Montana	19,673	76	0.4	103	0.5
Nebraska	31,282	155	0.5	202	0.6
Nevada	43,613	143	0.3	244	0.6
New Hampshire	30,822	236	0.8	254	0.8
New Jersey	147,396	847	0.6	887	0.6
New Mexico	41,660	160	0.4	161	0.4
New York	387,666	2,361	0.6	2,826	0.7
North Carolina	237,795	557	0.2	806	0.3
North Dakota	10,478	37	0.4	64	0.6
Ohio	230,460	1,004	0.4	1,362	0.6
Oklahoma	84,410	223	0.3	283	0.3
Oregon	71,398	267	0.4	279	0.4
Pennsylvania	275,892	1,343	0.5	1,104	0.4
Rhode Island	27,875	177	0.6	152	0.5

(Continued)

**Table 52.**  
**Distribution, by state or other area, 2004—Continued**

State or area	All workers, December	Workers with benefits withheld because of substantial work, December		Workers with benefits terminated because of successful return to work, calendar year	
		Number	Percentage of all workers	Number	Percentage of all workers
South Carolina	124,724	173	0.1	348	0.3
South Dakota	13,837	95	0.7	124	0.9
Tennessee	172,989	389	0.2	491	0.3
Texas	350,669	1,005	0.3	1,385	0.4
Utah	27,163	150	0.6	134	0.5
Vermont	14,992	123	0.8	125	0.8
Virginia	156,592	546	0.3	578	0.4
Washington	115,238	575	0.5	665	0.6
West Virginia	76,039	185	0.2	118	0.2
Wisconsin	104,633	576	0.6	603	0.6
Wyoming	9,166	42	0.5	71	0.8
Outlying areas					
Puerto Rico	134,694	81	0.1	79	0.1
Other <sup>a</sup>	16,143	18	0.1	19	0.1

SOURCES: Social Security Administration, Disabled Beneficiaries and Dependents Master Beneficiary Record file, 100 percent data, and Annual Award and Termination Transaction file, 100 percent data.

a. Includes American Samoa, Guam, Northern Mariana Islands, Virgin Islands, and foreign countries.

CONTACT: Carolyn A. Harrison (410) 965-5522 or di.asr@ssa.gov.