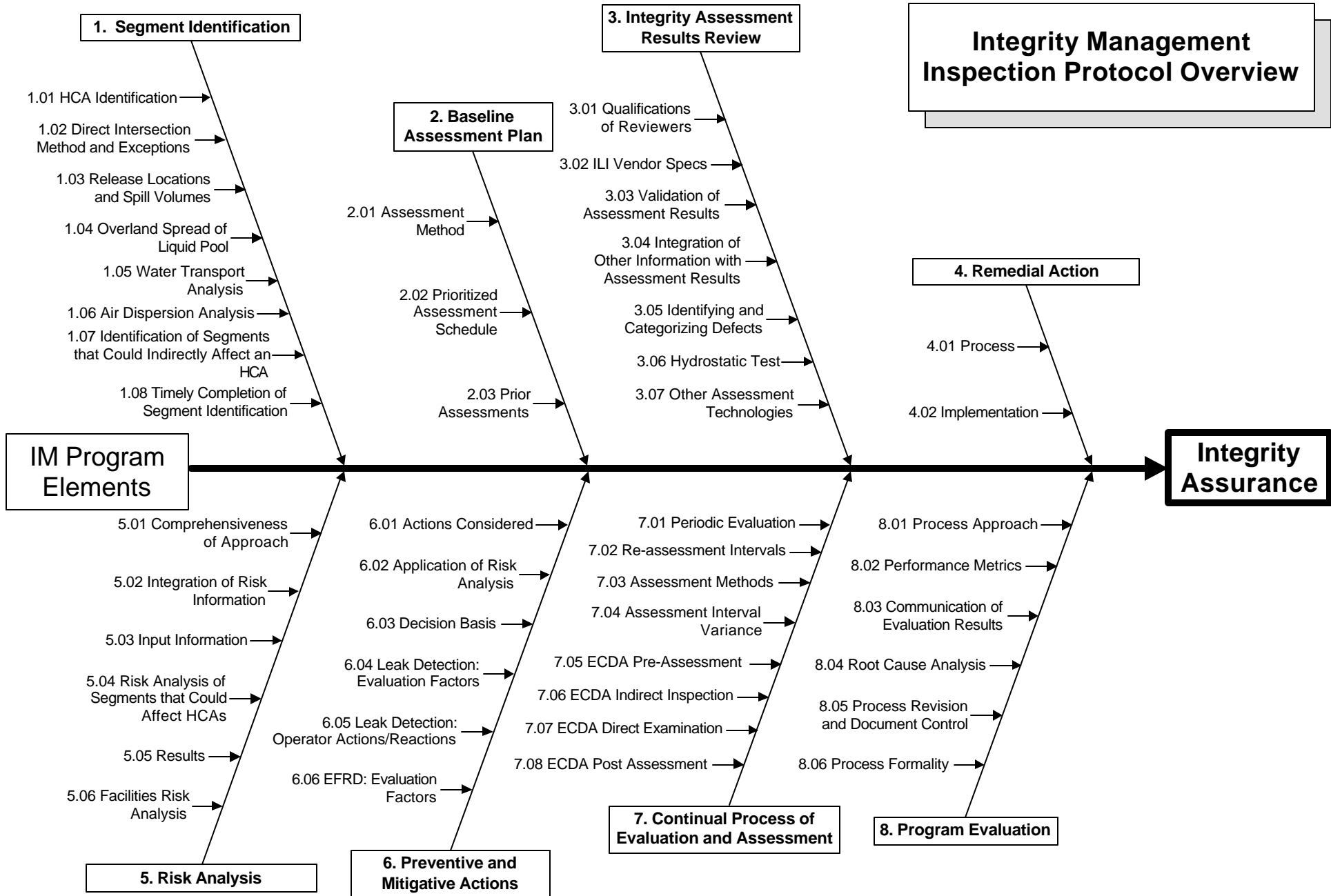
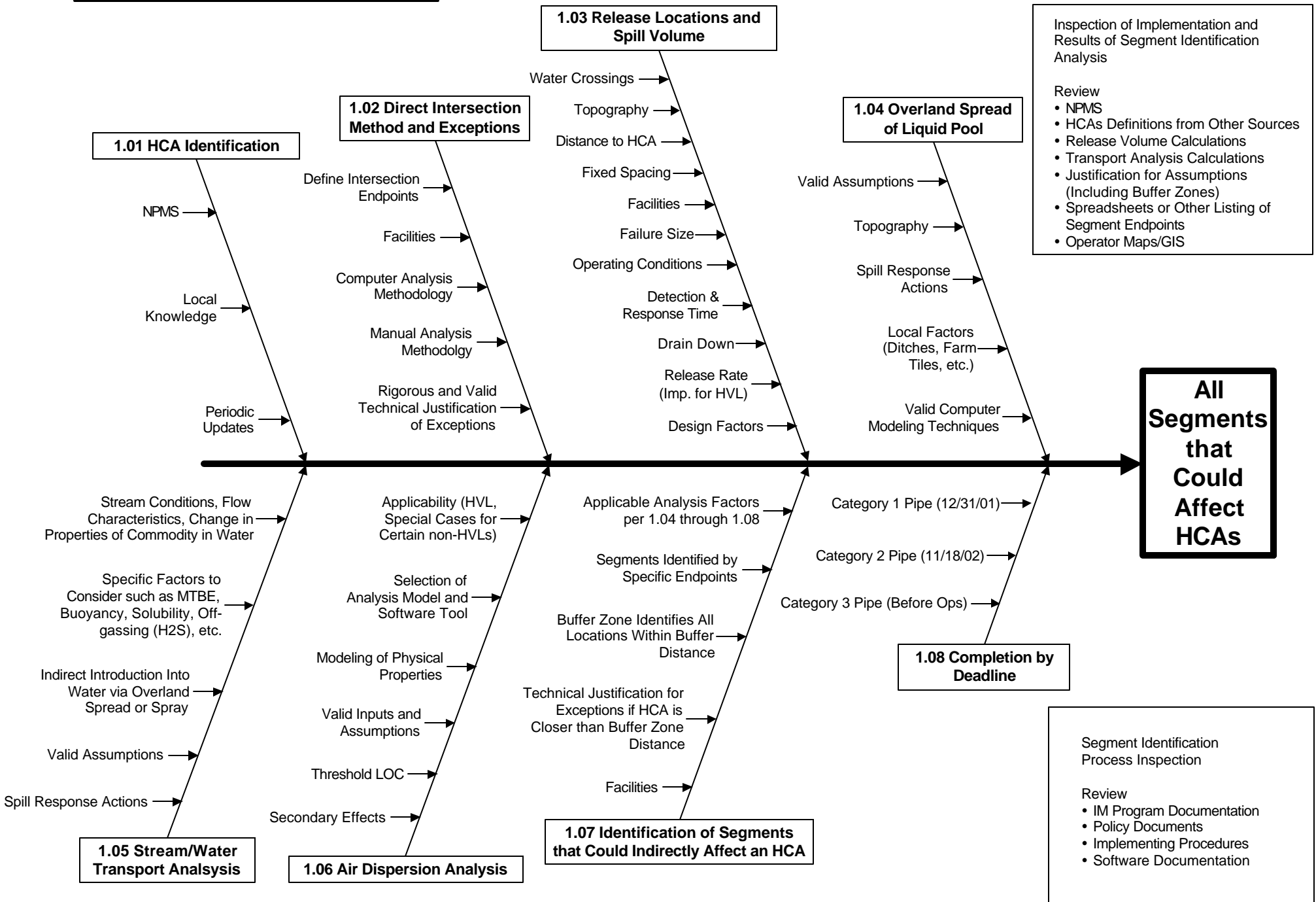


# Integrity Management Inspection Protocol Overview

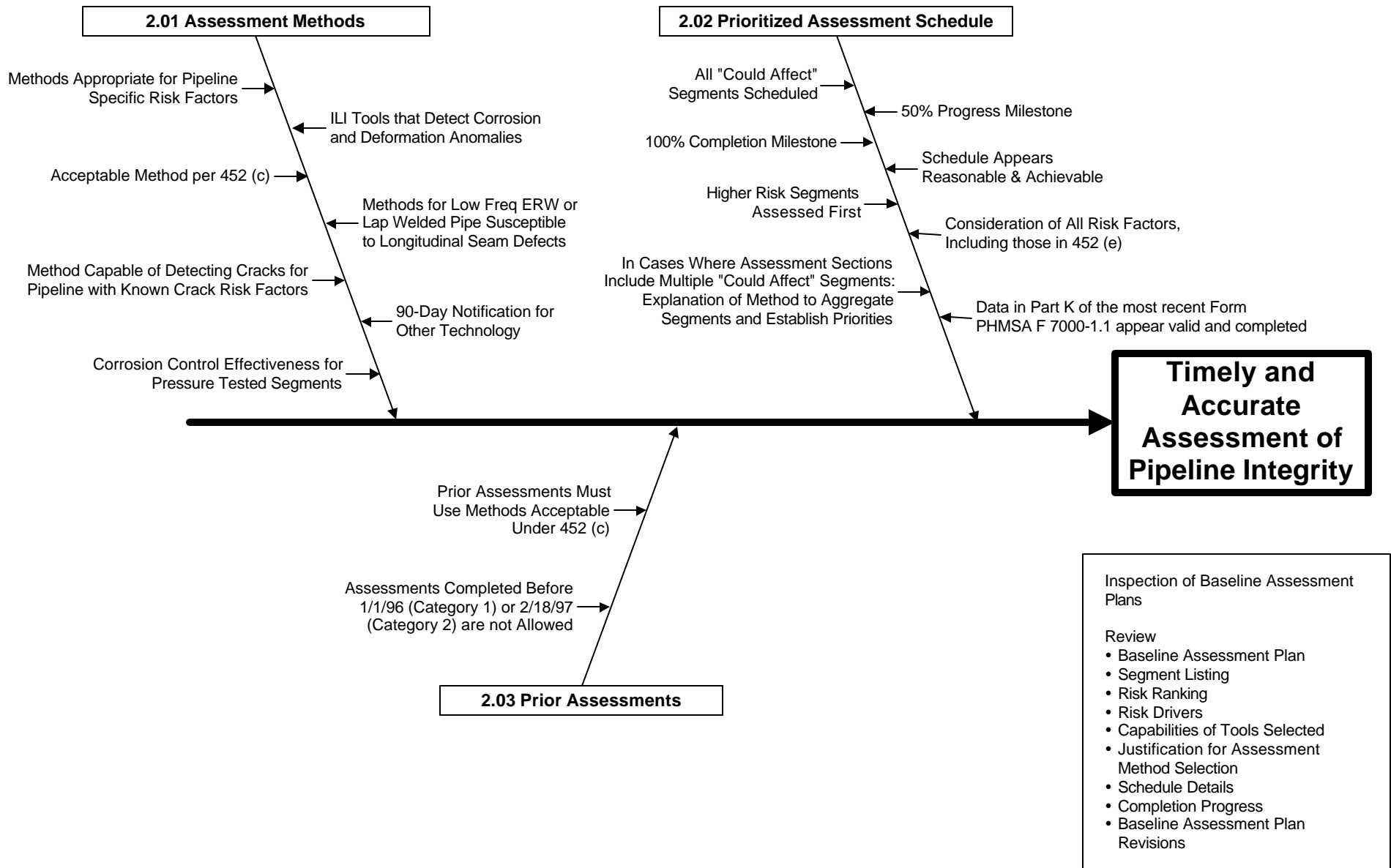


# Segment Identification

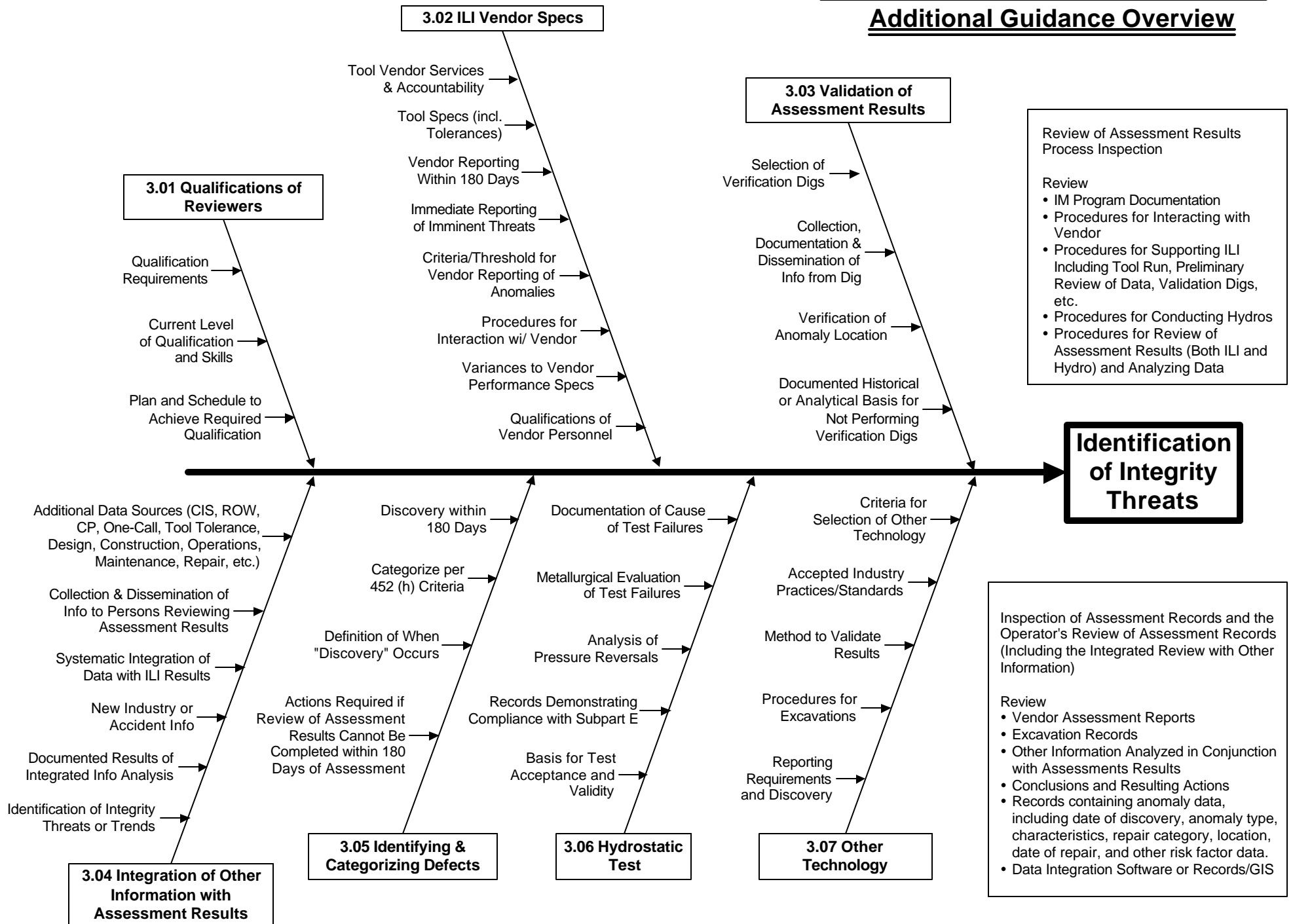
## Additional Guidance Overview



# Baseline Assessment Plan Additional Guidance Overview



# Integrity Assessment Results Review Additional Guidance Overview



**Remedial Action**  
**Additional Guidance Overview**

**4.01 Remedial Action Process**

- Prioritized Remediation Schedule →
- Documented Justification that Changes to Repair Schedule will Not Jeopardize Public Safety or the Environment →
- Notification if Repair Schedule Can Not Be Met and Pressure is Not Reduced →
- Pressure Reduction for Immediate Repair Conditions →
- Limitation of Pressure Reduction to 365 Days →
- Repairs Comply with 49 CFR 195.422 →
- Recordkeeping for Repairs →

Remedial Action Process Inspection

Review

- IM Program Documentation
- O&M Manual
- Repair Procedures
- Procedures for Determining Repair Schedule Priorities



**Repair or Remediation of Integrity Threats**

- Prioritized Schedule Developed →
- Repairs Accomplished per the Prioritized Schedule →
- Any Schedule Changes Documented and Demonstrated not to Pose a Risk to Safety or the Environment →
- Notifications and Justification →
- Pressure Reduction or Shutdown for Immediate Repair Conditions →
- Pressure Reduction Determined via ANSI B31.4 Section 451.7 or other Valid Engineering Basis →
- Pressure Reduction Remained in Place No More Than 365 Days →
- Repairs Made per 49 CFR 195.422 →
- Data in Part J of Form PHMSA F 7000-1.1 valid and complete →

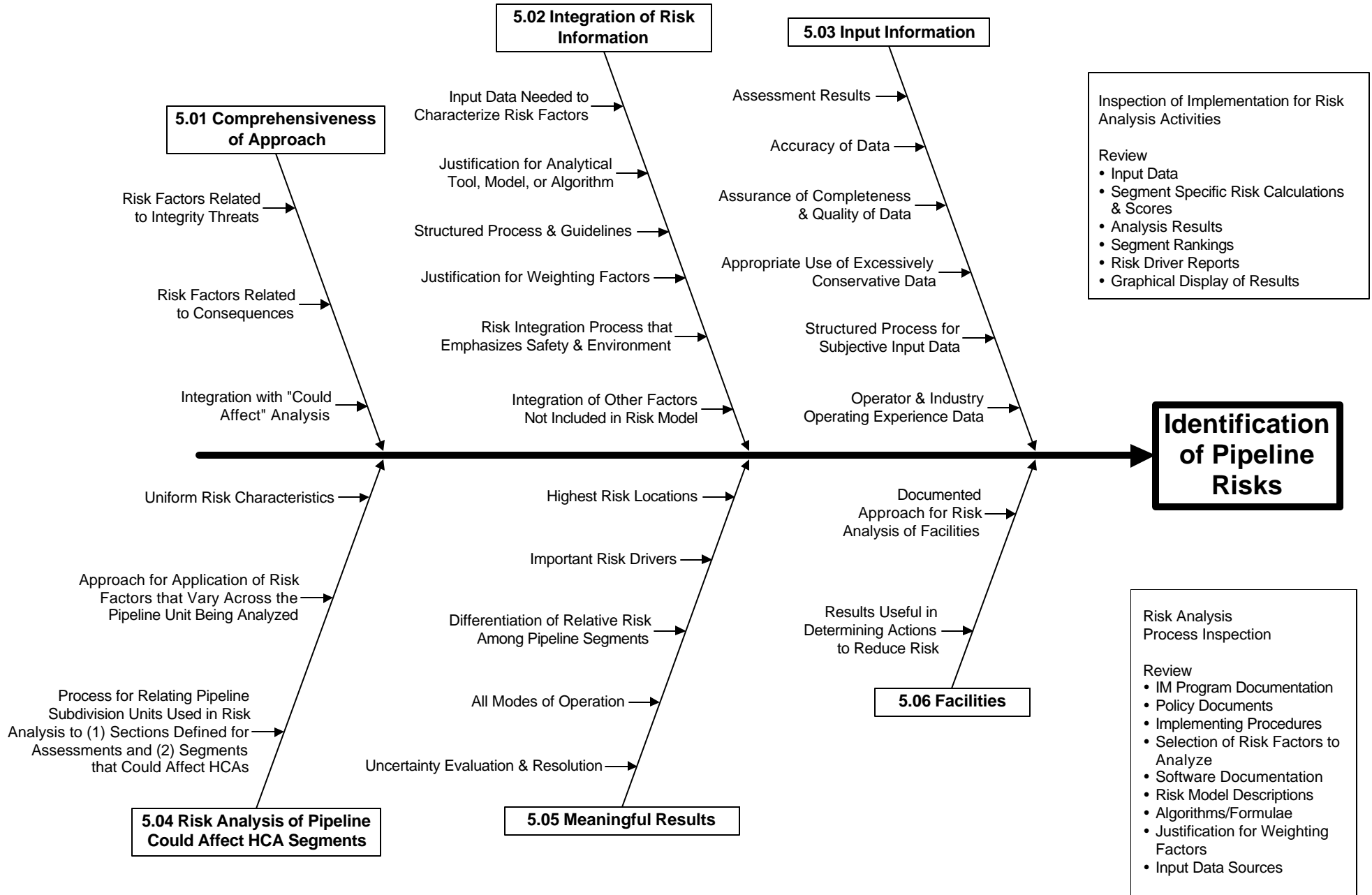
**4.02 Remedial Action Implementation**

Inspection of Implementation for Remedial Action

Review

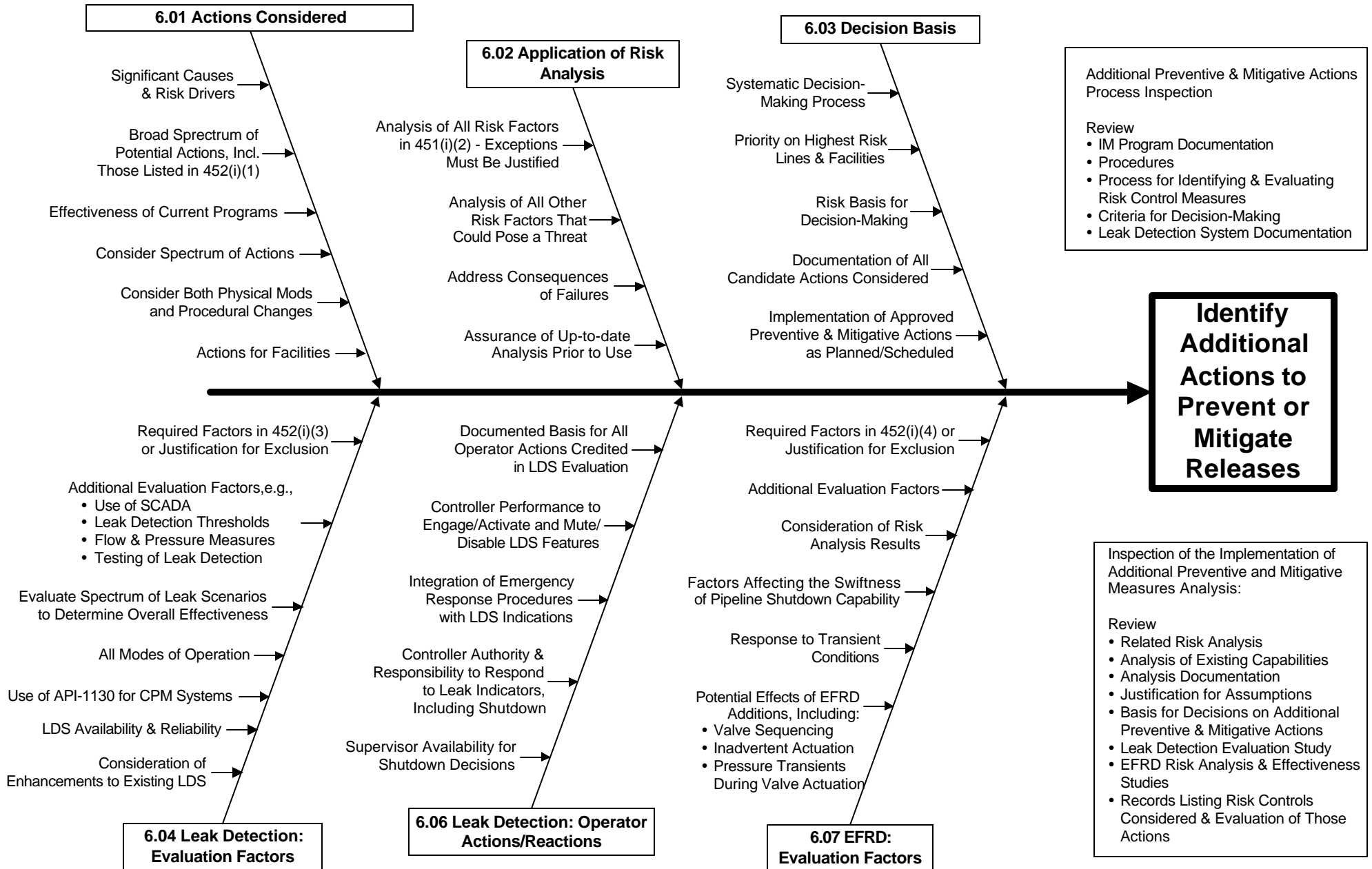
- Repair Records
- Excavation/Remediation Schedule
- Documentation of Changes to Repair Schedule
- Notifications
- Operating Records (Pressure Reductions)
- Calculations of Safe Operating Pressure

# Risk Analysis Additional Guidance Overview

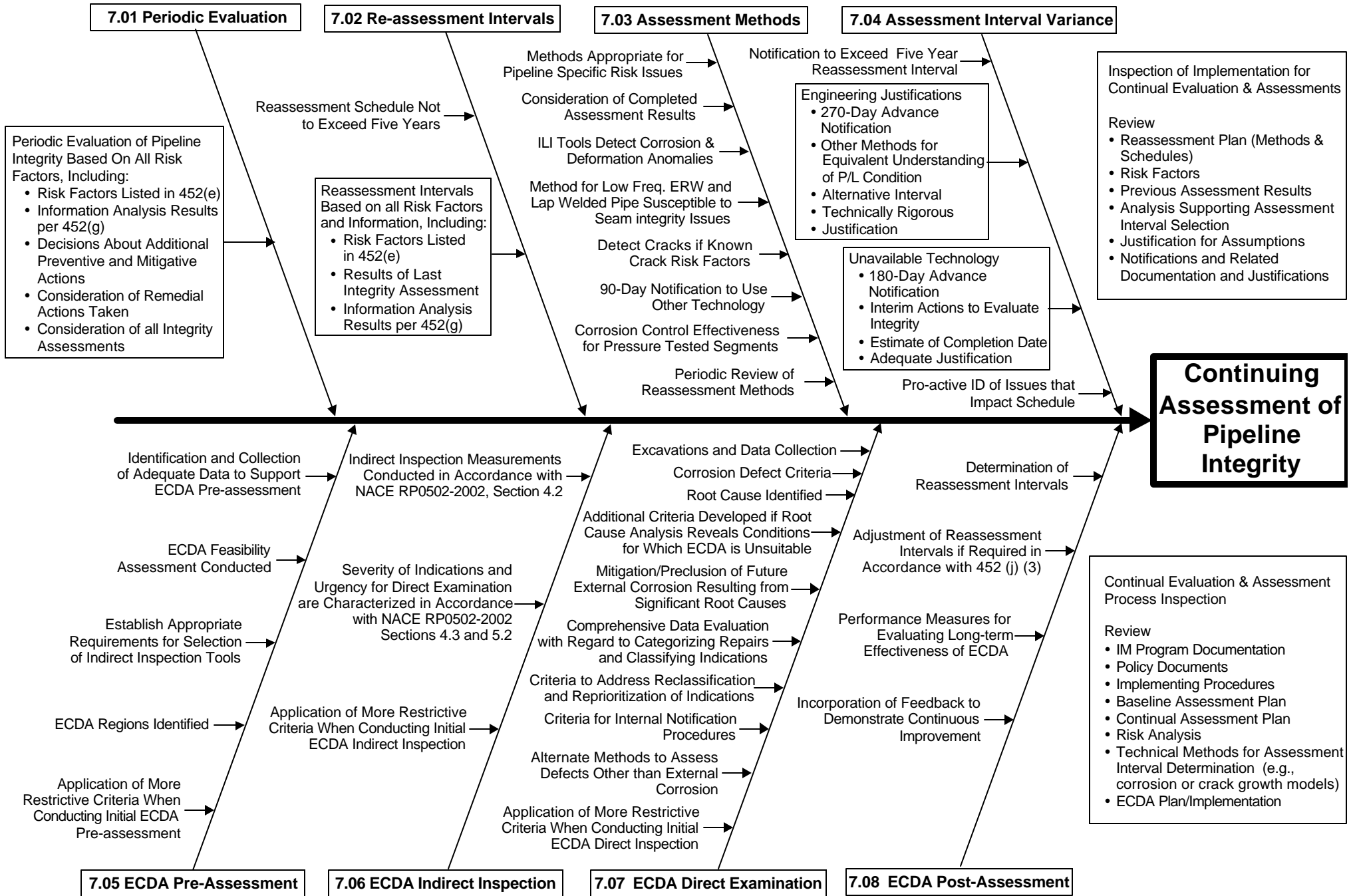


# Additional Preventive & Mitigative Actions

## Additional Guidance Overview



# Continual Evaluation & Assessment Additional Guidance Overview





# Performance Measures & Program Evaluation

## Additional Guidance Overview

