




**Integrated Geoscience Studies
in the Greater Yellowstone Area—
Volcanic, Tectonic, and Hydrothermal Processes
in the Yellowstone Geocosystem**

Professional Paper 1717

U.S. Department of the Interior
U.S. Geological Survey

A grayscale topographic map of the Greater Yellowstone Area, showing the intricate terrain of the region. The map features a central high-altitude plateau with numerous ridges and valleys, surrounded by lower elevations and river networks. The overall appearance is that of a detailed relief map.

Integrated Geoscience Studies in the Greater Yellowstone Area—Volcanic, Tectonic, and Hydrothermal Processes in the Yellowstone Geoecosystem

Edited by Lisa A. Morgan

Professional Paper 1717

**U.S. Department of the Interior
U.S. Geological Survey**

The background of the entire page is a grayscale topographic map showing terrain contours and elevation changes. The map is centered on the page and covers the entire area.

U.S. Department of the Interior
DIRK KEMPTHORNE, Secretary

U.S. Geological Survey
Mark D. Myers, Director

U.S. Geological Survey, Reston, Virginia: 2007

For sale by U.S. Geological Survey, Information Services
Box 25286, Denver Federal Center
Denver, CO 80225

For more information about the USGS and its products:
Telephone: 1-888-ASK-USGS
World Wide Web: <http://www.usgs.gov/>

Any use of trade, product, or firm names in this publication is for descriptive purposes only and does not imply endorsement by the U.S. Government.

Although this report is in the public domain, permission must be secured from the individual copyright owners to reproduce any copyrighted materials contained within this report.

Suggested citation:

Morgan, L.A., ed., 2007, Integrated geoscience studies in the greater Yellowstone area—Volcanic, tectonic, and hydrothermal processes in the Yellowstone geosystem: U.S. Geological Survey Professional Paper 1717, 532 p.

Volume Contents

Geologic Studies


- A. The Yellowstone Hotspot, Greater Yellowstone Ecosystem, and Human Geography.....1
By Kenneth L. Pierce, Don G. Despain, Lisa A. Morgan, and John M. Good
- B. Movement of a Large Landslide Block Dated by Tree-Ring Analysis, Tower Falls Area,
Yellowstone National Park, Wyoming41
By Paul E. Carrara

Yellowstone Lake Studies

- C. Reconnaissance Study of Pleistocene Lake and Fluvial Deposits In and Near Ancestral
Yellowstone Lake, Wyoming53
By John D. Love, John M. Good, and D.G. Browne
- D. The Floor of Yellowstone Lake is Anything but Quiet—New Discoveries
from High-Resolution Sonar Imaging, Seismic-Reflection Profiling,
and Submersible Studies.....91
By Lisa A. Morgan, Wayne C. Shanks, III, Kenneth L. Pierce, David A. Lovalvo,
Gregory K. Lee, Michael W. Webring, William J. Stephenson, Samuel Y. Johnson,
Stephen S. Harlan, Boris Schulze, and Carol A. Finn
- E. Postglacial Inflation-Deflation Cycles, Tilting, and Faulting
in the Yellowstone Caldera Based on Yellowstone Lake Shorelines127
By Kenneth L. Pierce, Kenneth P. Cannon, Grant A. Meyer, Matthew J. Trebesch,
and Raymond D. Watts
- F. The Influence of Sublacustrine Hydrothermal Vent Fluids on the Geochemistry
of Yellowstone Lake.....169
By Laurie S. Balistrieri, Wayne C. Shanks, III, Russell L. Cuhel, Carmen Aguilar,
and J. Val Klump
- G. Geochemistry of Sublacustrine Hydrothermal Deposits in Yellowstone Lake—
Hydrothermal Reactions, Stable-Isotope Systematics, Sinter Deposition,
and Spire Formation.....201
By Wayne C. Shanks, III, Jeffrey C. Alt, and Lisa A. Morgan

Geochemical Studies

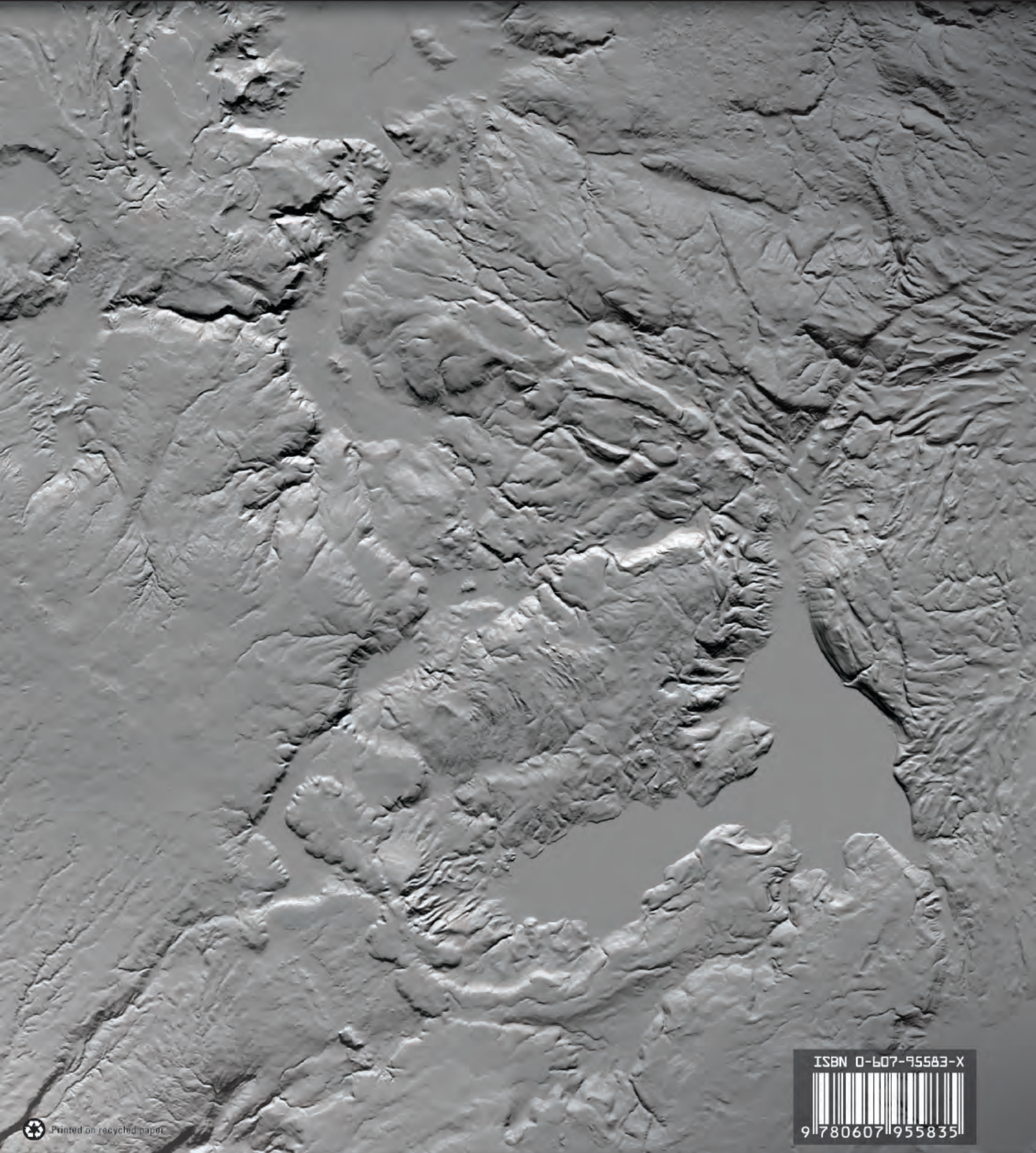
- H. The Question of Recharge to the Deep Thermal Reservoir Underlying the Geysers
and Hot Springs of Yellowstone National Park.....235
By Robert O. Rye and Alfred H. Truesdell
- I. Is Yellowstone Losing Its Steam?—Chloride Flux Out
of Yellowstone National Park.....271
By Irving Friedman and Daniel R. Norton
- J. Applications of Trace-Element and Stable-Isotope Geochemistry to Wildlife Issues,
Yellowstone National Park and Vicinity.....299
By Maurice A. Chaffee, Wayne C. Shanks, III, Robert O. Rye, Charles C. Schwartz,
Monique G. Adams, Robert R. Carlson, James G. Crock, Pamela A. Gemery-Hill,
Kerry A. Gunther, Cynthia L. Kester, Harley D. King, and Shannon R. Podruzny


A grayscale topographic map of Yellowstone National Park, showing the park's boundaries, major rivers, and various geothermal features like geysers and hot springs. The map is used as a background for the table of contents.


K.	Environmental Geochemistry in Yellowstone National Park— Natural and Anthropogenic Anomalies and Their Potential Impact on the Environment.....	335
	By Maurice A. Chaffee, Robert R. Carlson, and Harley D. King	
L.	Geochemical Data for Selected Rivers, Lake Waters, Hydrothermal Vents, and Subaerial Geysers in Yellowstone National Park, Wyoming and Vicinity, 1996–2004	365
	By Pamela A. Gemery-Hill, Wayne C. Shanks, III, Laurie S. Balistrieri, and Gregory K. Lee	
M.	The Life Cycle of Gold Deposits Near the Northeast Corner of Yellowstone National Park—Geology, Mining History, and Fate	427
	By Bradley S. Van Gosen	

Geophysical Studies

N.	Spectral Analysis of Absorption Features for Mapping Vegetation Cover and Microbial Communities in Yellowstone National Park Using AVIRIS Data	459
	By Raymond F. Kokaly, Don G. Despain, Roger N. Clark, and K. Eric Livo	
O.	Hydrothermally Altered Rock and Hot-Spring Deposits at Yellowstone National Park— Characterized Using Airborne Visible- and Infrared-Spectroscopy Data	491
	By K. Eric Livo, Fred A. Kruse , Roger N. Clark, Raymond F. Kokaly, and W.C. Shanks, III	
P.	Monitoring Changes in Geothermal Activity at Norris Geyser Basin by Satellite Telemetry, Yellowstone National Park, Wyoming	509
	By Irving Friedman	



 Printed on recycled paper

ISBN 0-607-95583-X

9 780607 955835