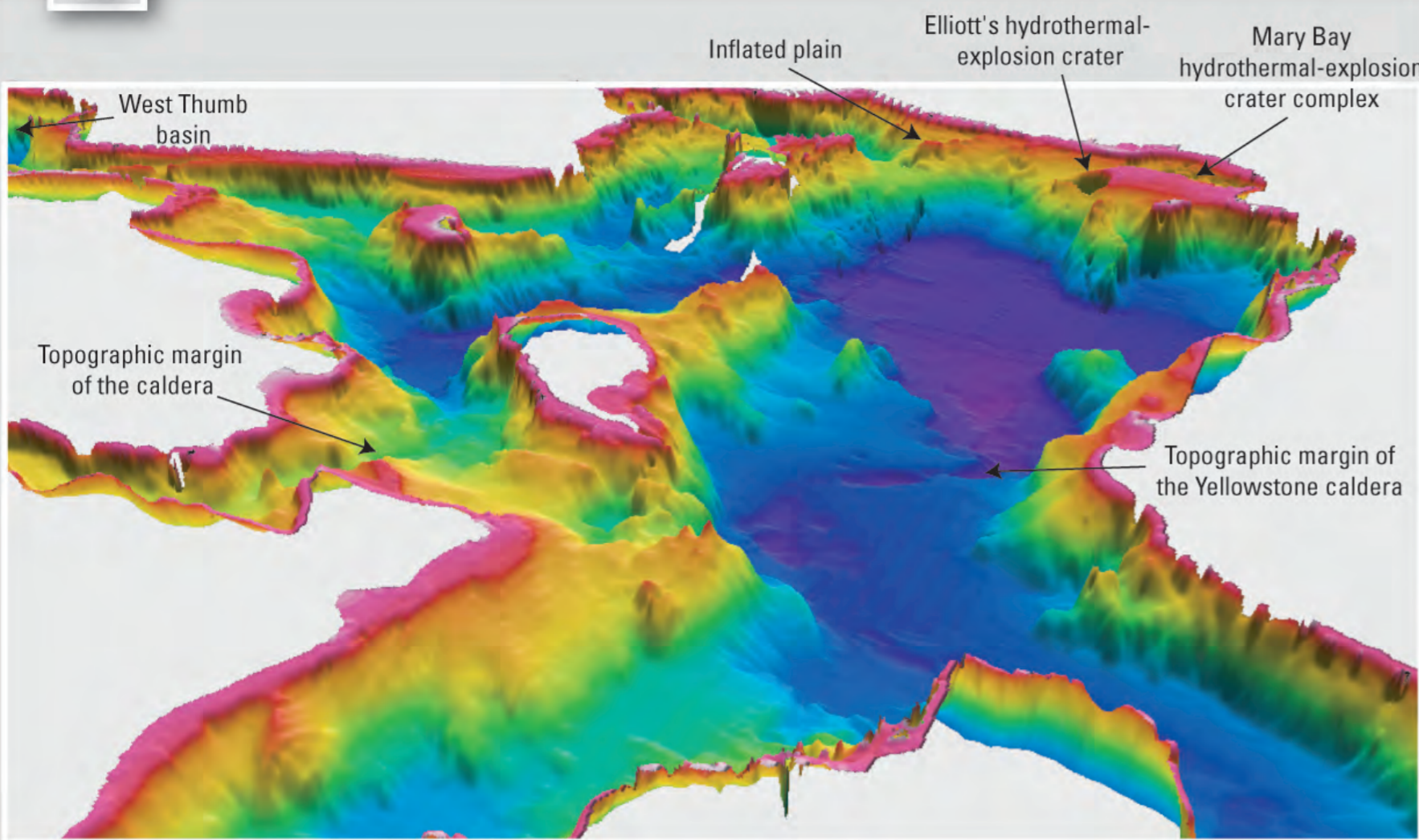


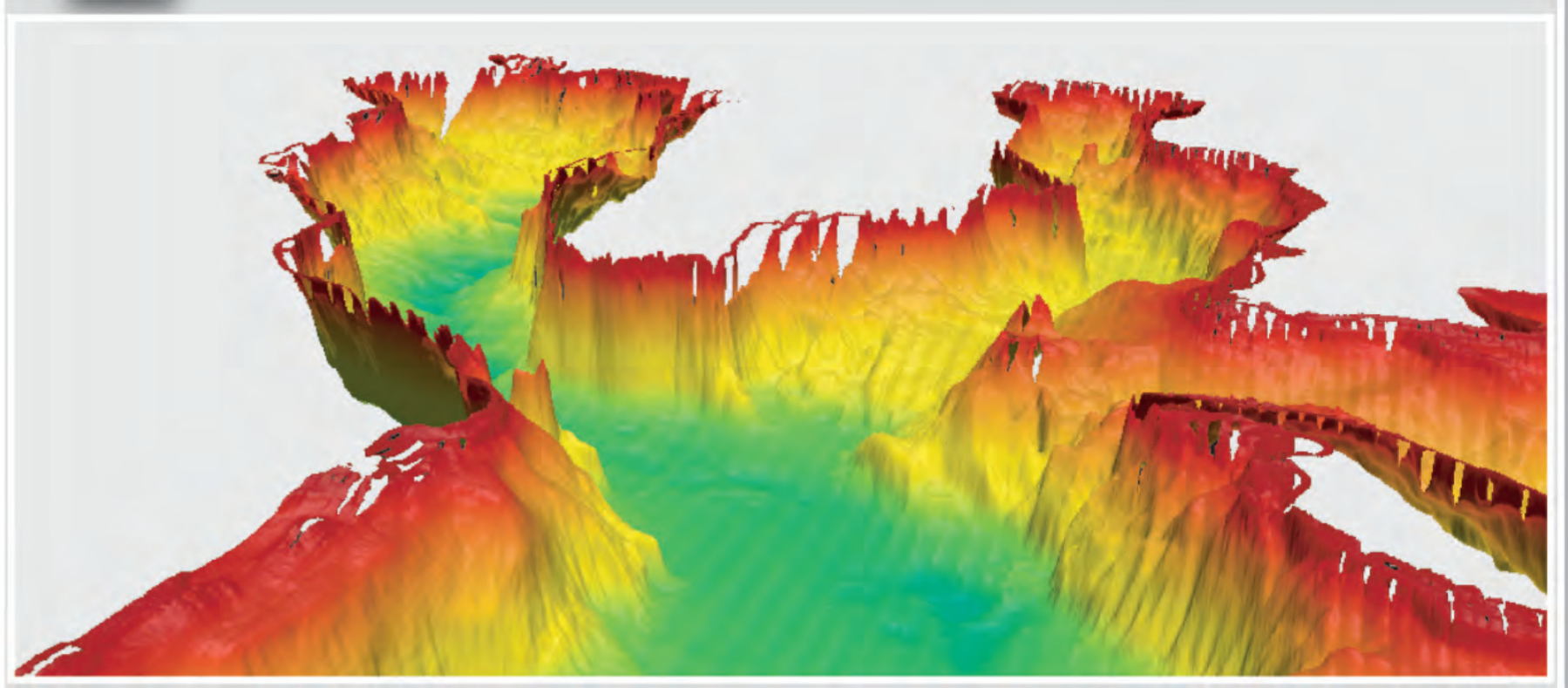
Views of the Floor of Yellowstone Lake— High-Resolution Bathymetric Images in the Northern Part of Yellowstone Lake.

A



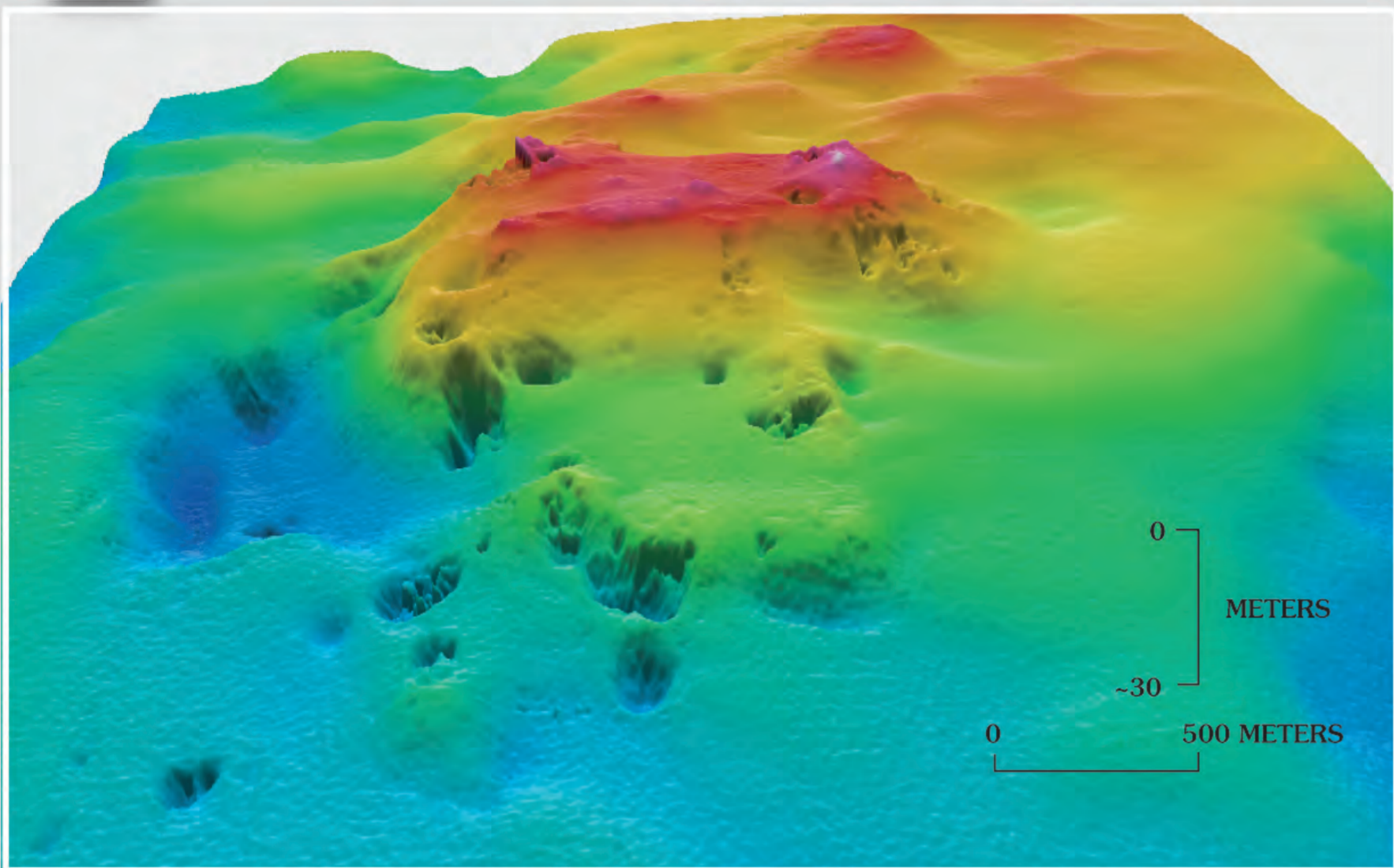
Rainbow-colored bathymetric map of Yellowstone Lake. View is from the Promontory northward into the 0.64-Ma Yellowstone caldera.

B



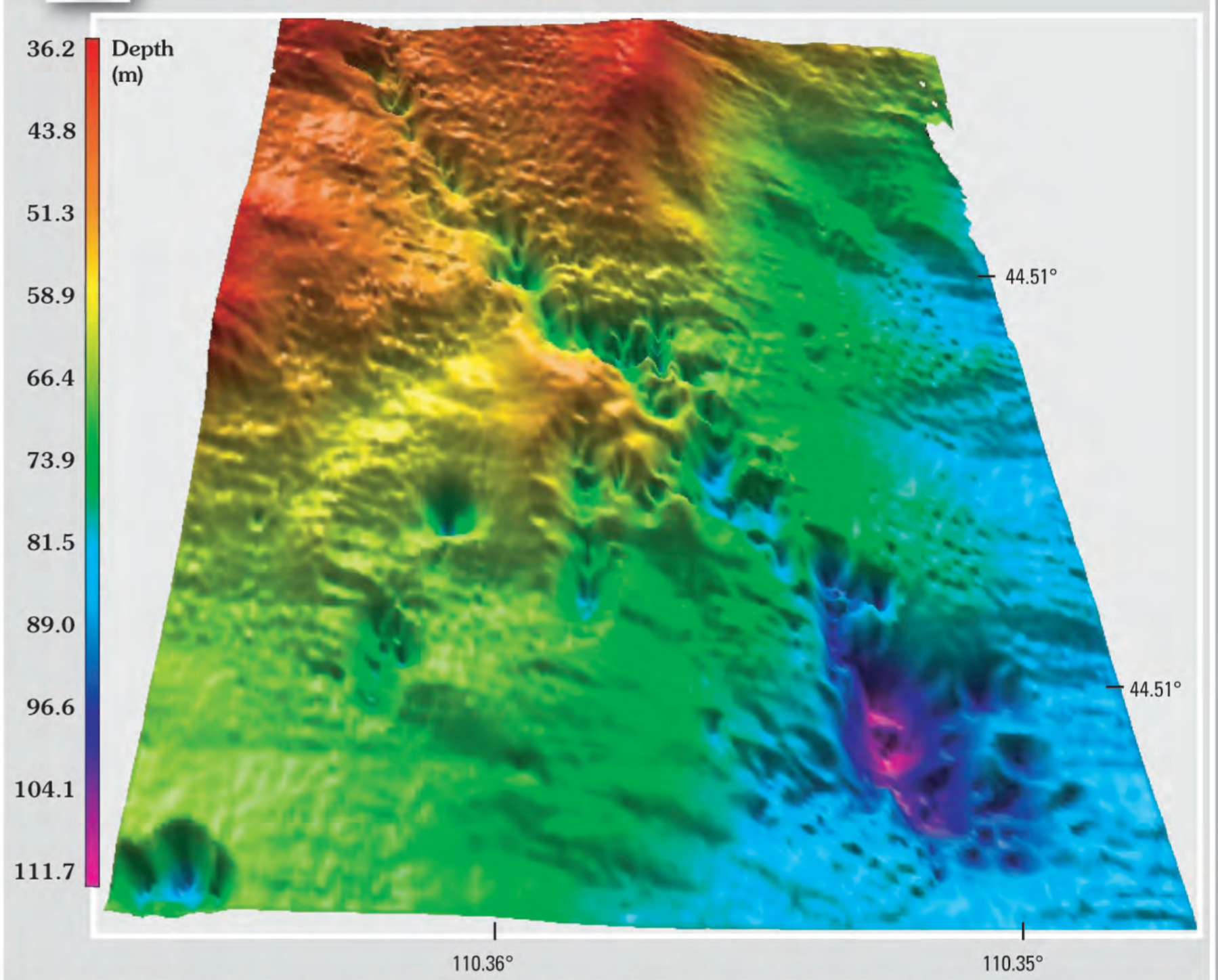
View looking south from the central basin of Yellowstone Lake into the Southeast (left) and South Arms.

C



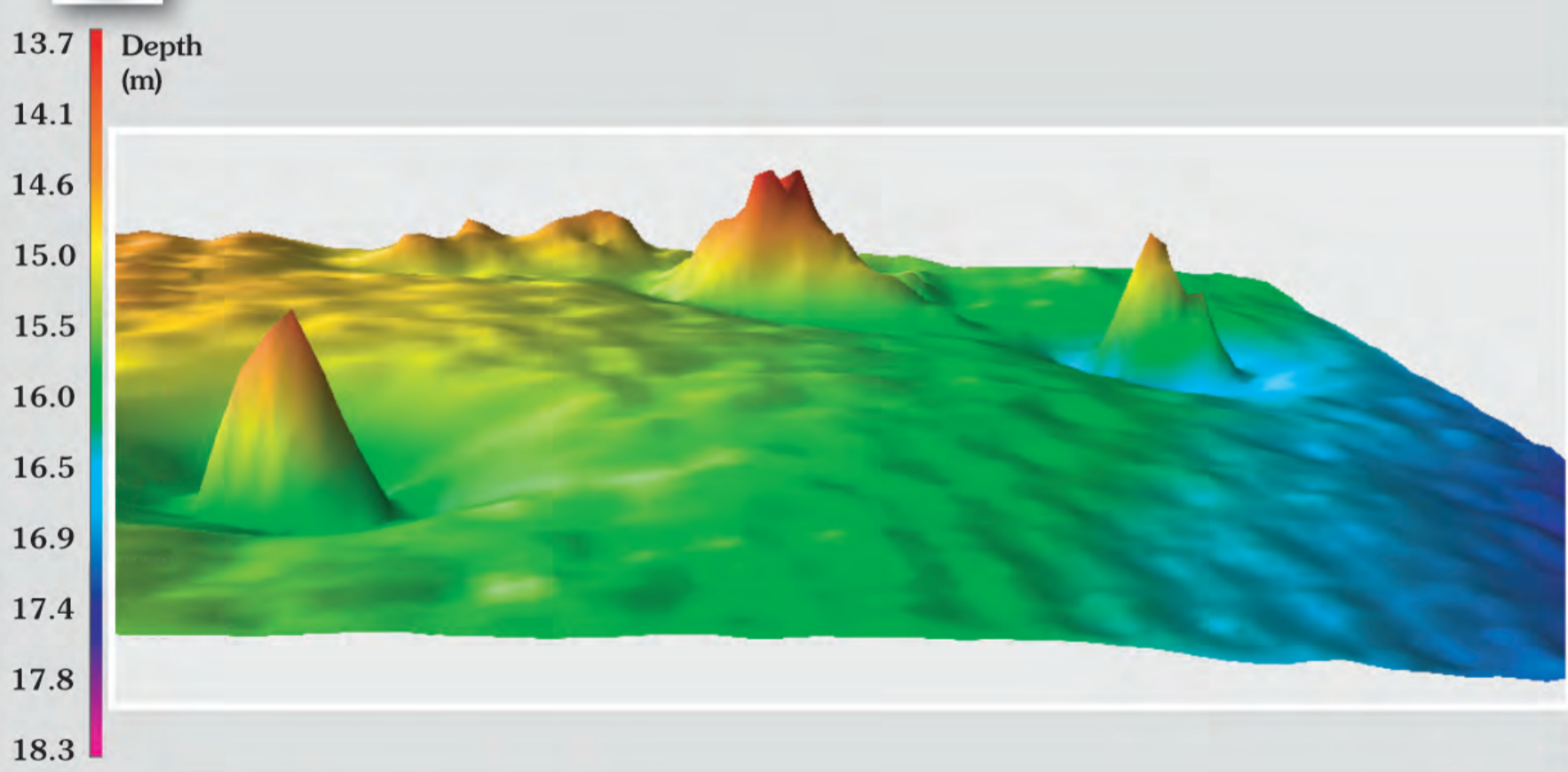
Oblique bathymetric view of the inflated-plain vent system in the northern basin of Yellowstone Lake.

D



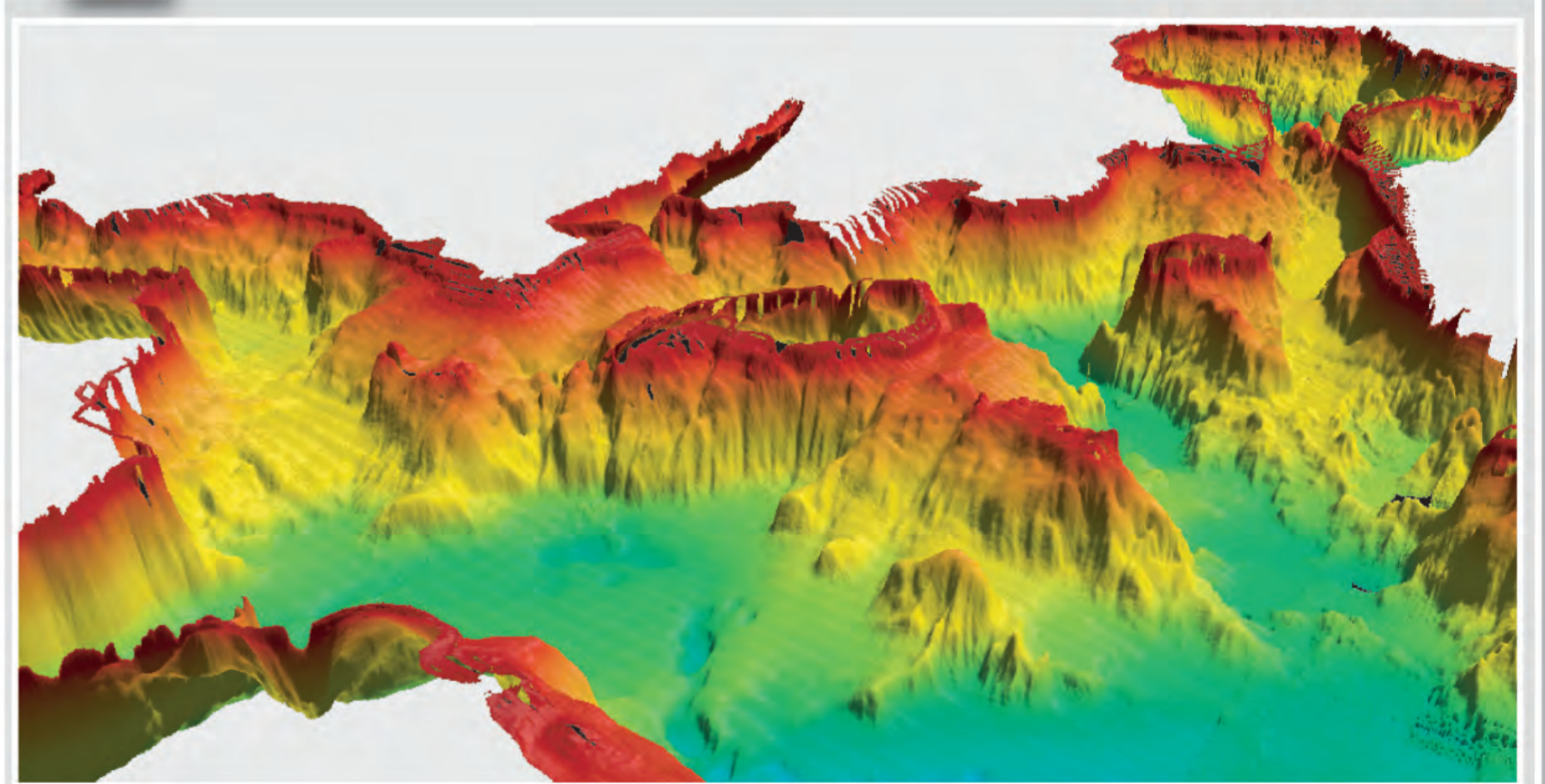
The deepest hydrothermal vent in Yellowstone Lake is east of Stevenson Island in a set of northwest-trending fractures.

E



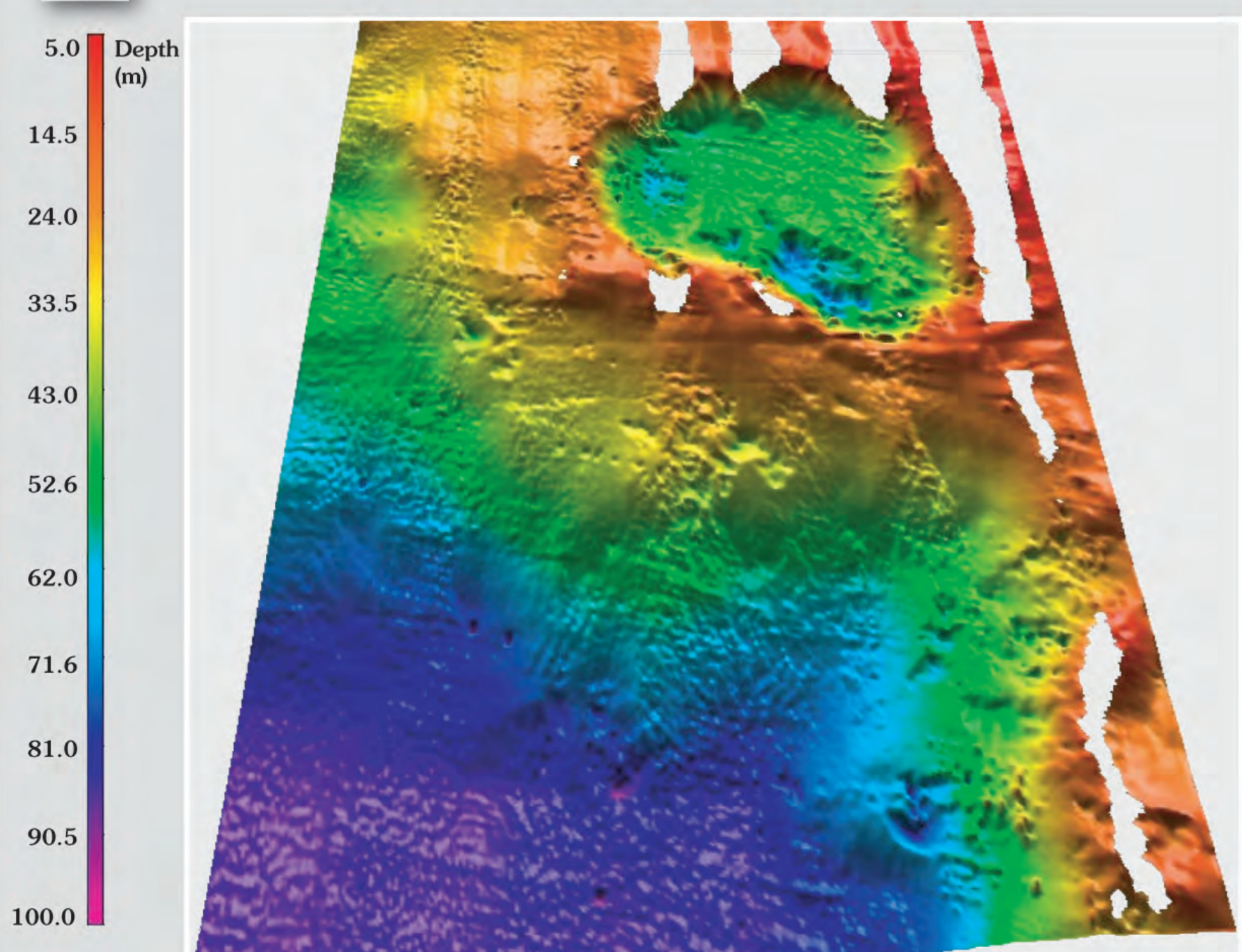
Hydrothermal siliceous spires in Bridge Bay.

F



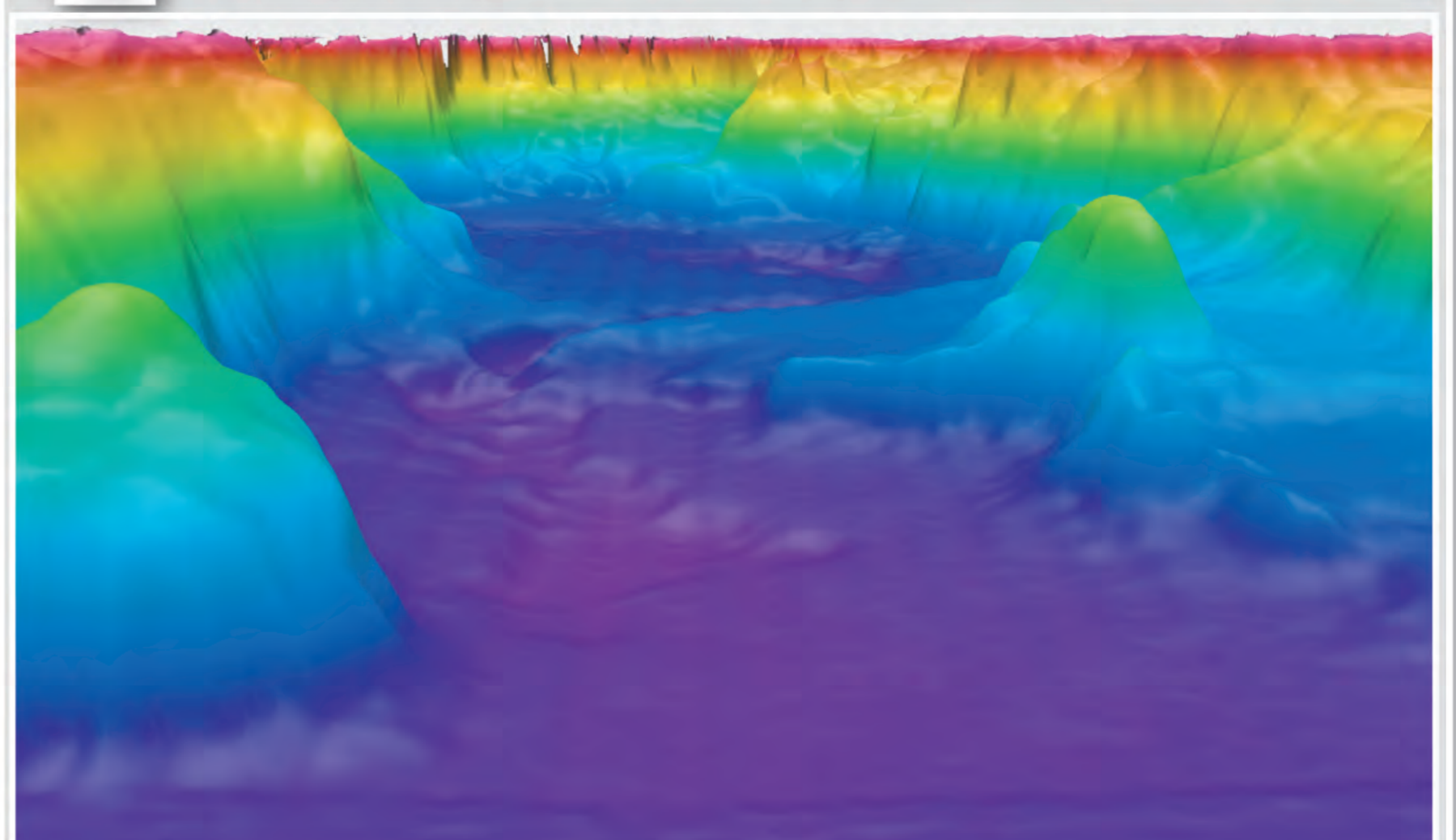
View of Yellowstone Lake from the northeast looking along the topographic margin of the Yellowstone caldera (foreground), across Frank Island (underlain by the Aster Creek rhyolite flow), and along Breeze Bay channel into West Thumb crater.

G



Elliott's crater, a large hydrothermal-explosion crater in the northern basin.

H



View to the south across the central basin and topographic margin of the Yellowstone caldera.