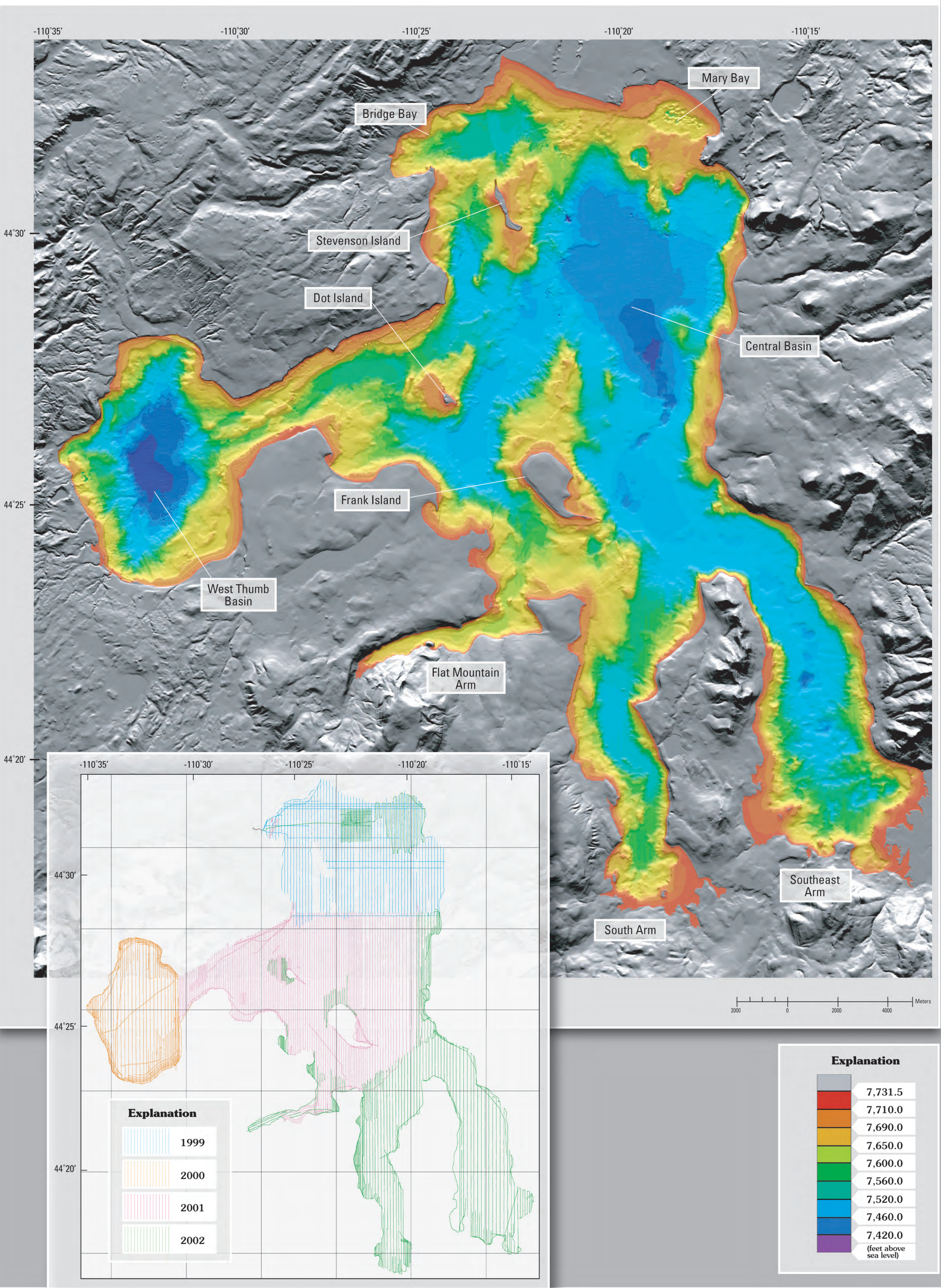


High-Resolution Bathymetric Map of Yellowstone Lake



New high-resolution bathymetric map, shown as colored depth intervals, acquired by multibeam-sonar imaging and seismic mapping. The topography surrounding the lake is shown as a gray-shaded-relief map. Inset (lower left) shows individual track lines of the boat and progress of the bathymetric survey from 1999–2002.