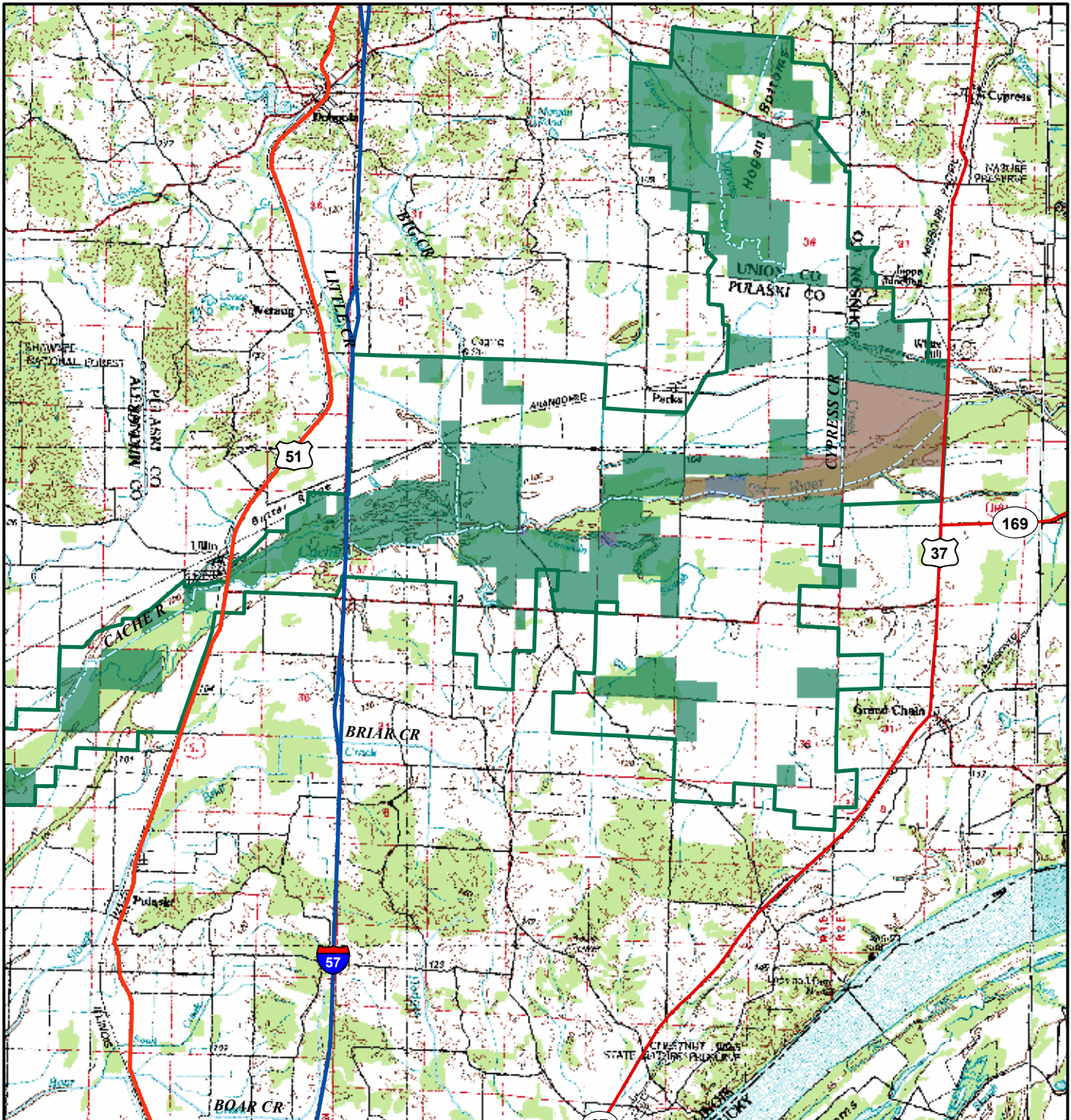




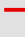
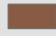
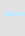
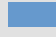
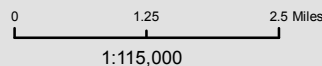


Cypress Creek National Wildlife Refuge Ullin, Illinois



Legend

- | | |
|---|--|
|  Cypress Creek National Wildlife Refuge Acquisition Boundary |  U.S. Transportation System |
| Ownership |  Interstate Transportation System |
|  Cypress Creek National Wildlife Refuge |  State Transportation System |
|  Illinois Dept. of Natural Resources |  Waterways |
|  The Nature Conservancy | |
| Private Land | |



RELY ON SIGNS NOT THE MAP

To avoid trespass on private property, know the meanings of posted signs and area regulations.

This map is a product of Cypress Creek NWR and is for reference purposes only. The map is not designed to provide site-specific information or to be used at a scale larger than 1:200,000. The map is not a survey and should not be used to establish legal ownership. Information depicted was derived from various sources with varying levels of accuracy. Reasonable efforts have been made to ensure the accuracy of this map, but it is not guaranteed to be without error. Cypress Creek NWR expressly disclaims responsibility for damages or liability that may arise from the use of this map.

Map Date: October 24, 2007
 Map Sources: Cypress Creek National Wildlife Refuge, Illinois Dept. of Natural Resources, The Nature Conservancy

