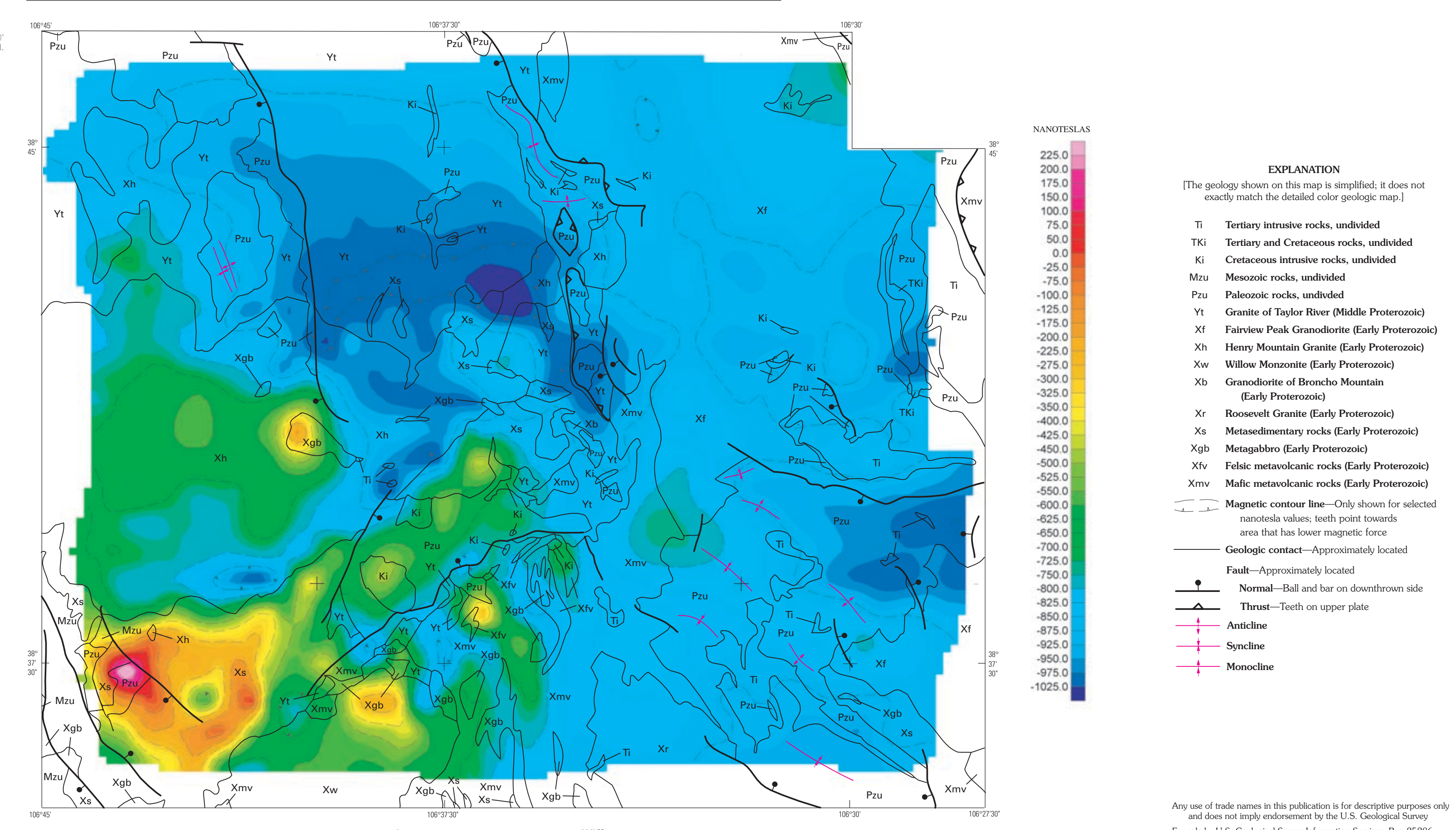


Table 1. Tabular explanation to accompany index map showing location of metallic mineral districts, Fossil Ridge and surrounding area.

(Due to space limitations, only a portion of the tabular explanation is shown. Type of deposit, age, and other information are given in parentheses in the column headed "Age of deposit". For a complete tabular explanation, see the tabular explanation in the accompanying report, "Geologic and Aeronmagnetic Maps of the Fossil Ridge Area and Vicinity, Gunnison County, Colorado", by Ed DeWitt, R.S. Zech, C.G. Chase, R.E. Zartman, R.P. Kucks, Bruce Bartleson, G.C. Rosenlund, and Drummond Early, III, published by the U.S. Geological Survey, Denver, Colorado, 2002.

District	Type of deposit	Map symbol	Map coordinates	Host rocks	Age of deposit	References
Wilson Creek	Placer	▲	As	Quartzite	Quaternary	HB (1991)
Tremor Peak	Placer	▲	As	Quartzite	Quaternary	HB (1991), DeWitt and others (1985)
Cambrian Peak	Placer	▲	As, Ag, Pb	Quartzite	Quaternary	HB (1991), DeWitt and others (1985)
Union Park	Placer	▲	As, Ag, Pb	Quartzite	Quaternary	HB (1991), DeWitt and others (1985)
Willow Creek	Placer	▲	As, Ag, Pb	Quartzite	Quaternary	HB (1991), DeWitt and others (1985)
Gold Brick	Placer	▲	As, Ag, Pb, Cu	Quartzite	Quaternary	HB (1991), DeWitt and others (1985)
Gold Creek	Placer	▲	As, Ag, Pb, Cu	Quartzite	Quaternary	HB (1991), DeWitt and others (1985)
Quartz Creek	Placer	▲	As, Ag, Pb, Cu	Quartzite	Quaternary	HB (1991), DeWitt and others (1985)



View to the southwest from Fossil Ridge to the west of Fossil Ridge. Large brown areas are metasedimentary rocks (unit X4), western part of Fossil Ridge. Large brown areas are metasedimentary rocks (unit X4), western part of Fossil Ridge. Large brown areas are metasedimentary rocks (unit X4), western part of Fossil Ridge. Large brown areas are metasedimentary rocks (unit X4), western part of Fossil Ridge.

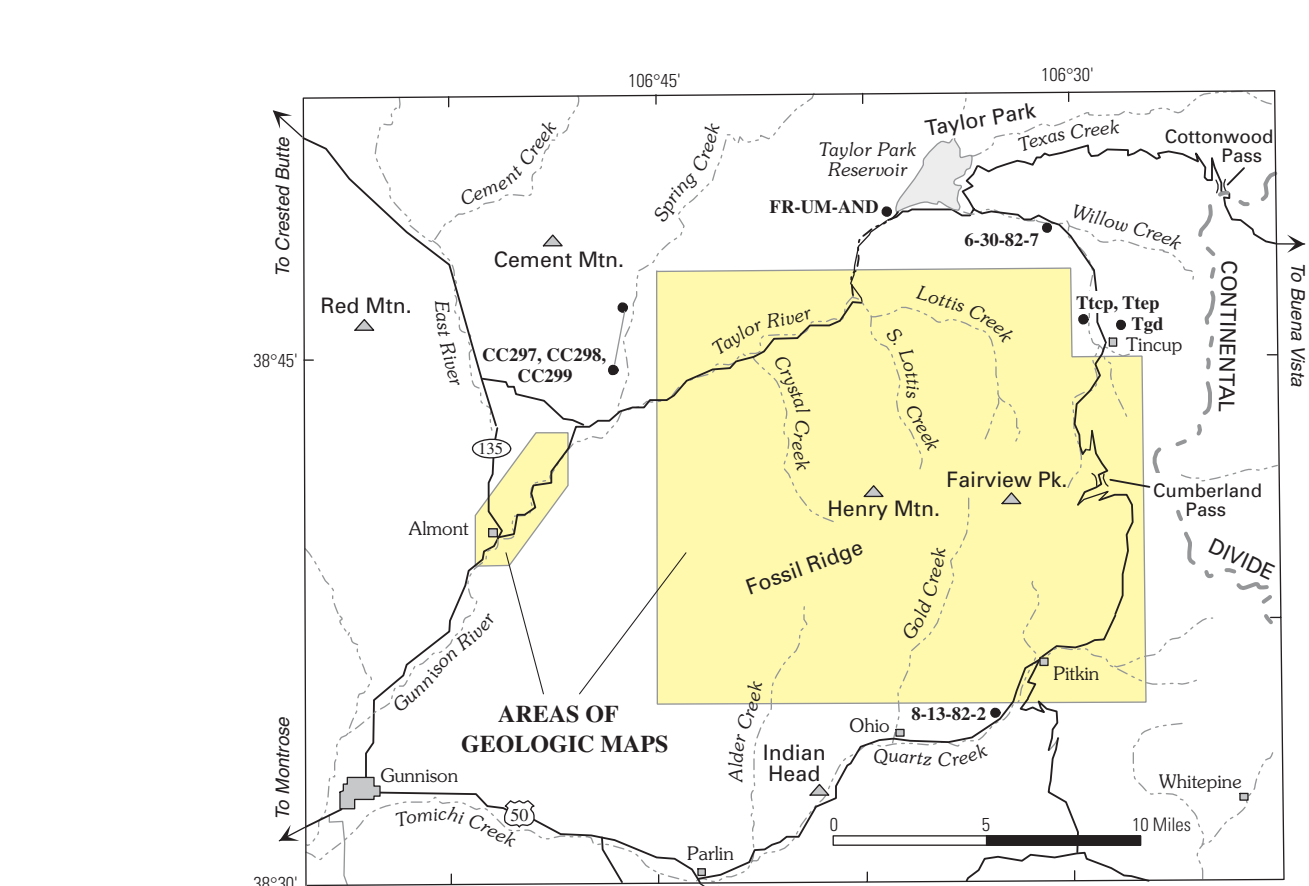
View to the southwest from Fossil Ridge to the west of Fossil Ridge. Large brown areas are metasedimentary rocks (unit X4), western part of Fossil Ridge. Large brown areas are metasedimentary rocks (unit X4), western part of Fossil Ridge. Large brown areas are metasedimentary rocks (unit X4), western part of Fossil Ridge.

View to the southwest from Fossil Ridge to the west of Fossil Ridge. Large brown areas are metasedimentary rocks (unit X4), western part of Fossil Ridge. Large brown areas are metasedimentary rocks (unit X4), western part of Fossil Ridge. Large brown areas are metasedimentary rocks (unit X4), western part of Fossil Ridge.

View to the southwest from Fossil Ridge to the west of Fossil Ridge. Large brown areas are metasedimentary rocks (unit X4), western part of Fossil Ridge. Large brown areas are metasedimentary rocks (unit X4), western part of Fossil Ridge. Large brown areas are metasedimentary rocks (unit X4), western part of Fossil Ridge.

View to the southwest from Fossil Ridge to the west of Fossil Ridge. Large brown areas are metasedimentary rocks (unit X4), western part of Fossil Ridge. Large brown areas are metasedimentary rocks (unit X4), western part of Fossil Ridge. Large brown areas are metasedimentary rocks (unit X4), western part of Fossil Ridge.

View to the southwest from Fossil Ridge to the west of Fossil Ridge. Large brown areas are metasedimentary rocks (unit X4), western part of Fossil Ridge. Large brown areas are metasedimentary rocks (unit X4), western part of Fossil Ridge. Large brown areas are metasedimentary rocks (unit X4), western part of Fossil Ridge.



GEOLOGIC AND AEROMAGNETIC MAPS OF THE FOSSIL RIDGE AREA AND VICINITY, GUNNISON COUNTY, COLORADO

By Ed DeWitt,¹ R.S. Zech,¹ C.G. Chase,² R.E. Zartman,³ R.P. Kucks,¹ Bruce Bartleson,⁴ G.C. Rosenlund,⁵ and Drummond Early, III⁶

Photomicrograph of a rock sample showing mineral grains.

Photomicrograph of a rock sample showing mineral grains.

Photomicrograph of a rock sample showing mineral grains.

Photomicrograph of a rock sample showing mineral grains.

¹U.S. Geological Survey, Denver Federal Center, Denver, CO 80202
²Department of Geology, University of Colorado, Boulder, CO 80509
³U.S. Geological Survey, Denver Federal Center, Denver, CO 80202
⁴Present address: Department of Geology, University of Colorado, Boulder, CO 80509
⁵Department of Geology, University of Colorado, Boulder, CO 80509
⁶Present address: Department of Geology, University of Colorado, Boulder, CO 80509