

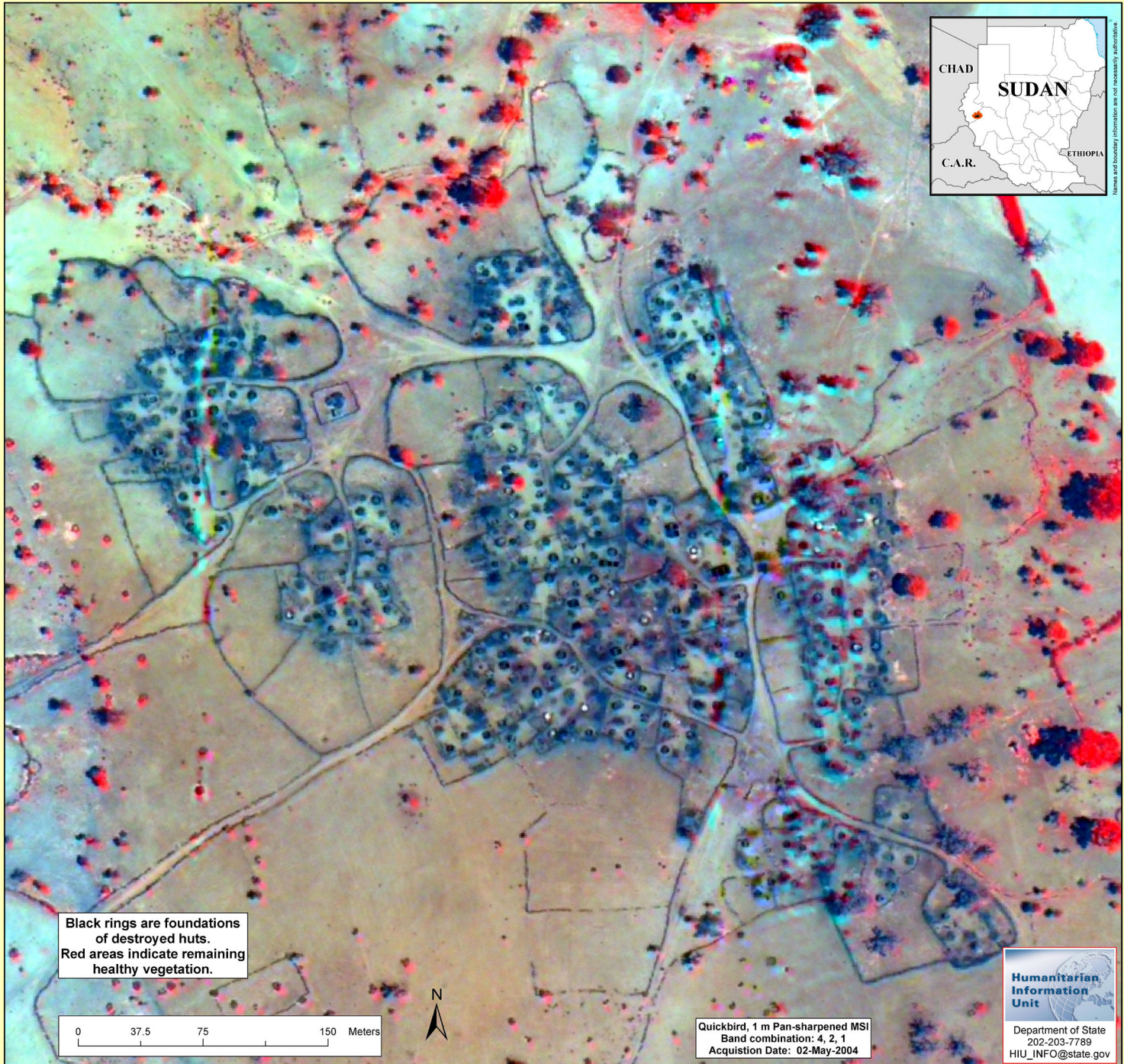
June 21, 2004

Destroyed Village near Shataya (258 of 269 structures destroyed)

© COPYRIGHT 2004 DigitalGlobe, Inc. (All Rights Reserved.)
DigitalGlobe and the DigitalGlobe logos are trademarks of DigitalGlobe, Inc. The use and/or dissemination of this data and/or of any product in any way derived there from are restricted. Unauthorized use and/or dissemination is prohibited.
License Tier: USG Clearview License Agreement with NGA
Source: Quickbird, 1 m Pan-sharpened MSI



Names and boundary information are not necessarily authoritative.



Black rings are foundations
of destroyed huts.
Red areas indicate remaining
healthy vegetation.

0 37.5 75 150 Meters



Quickbird, 1 m Pan-sharpened MSI
Band combination: 4, 2, 1
Acquisition Date: 02-May-2004

Humanitarian
Information
Unit

Department of State
202-203-7789
HIU_INFO@state.gov