

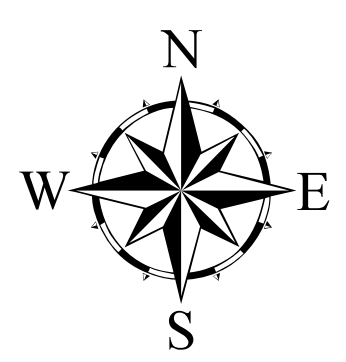
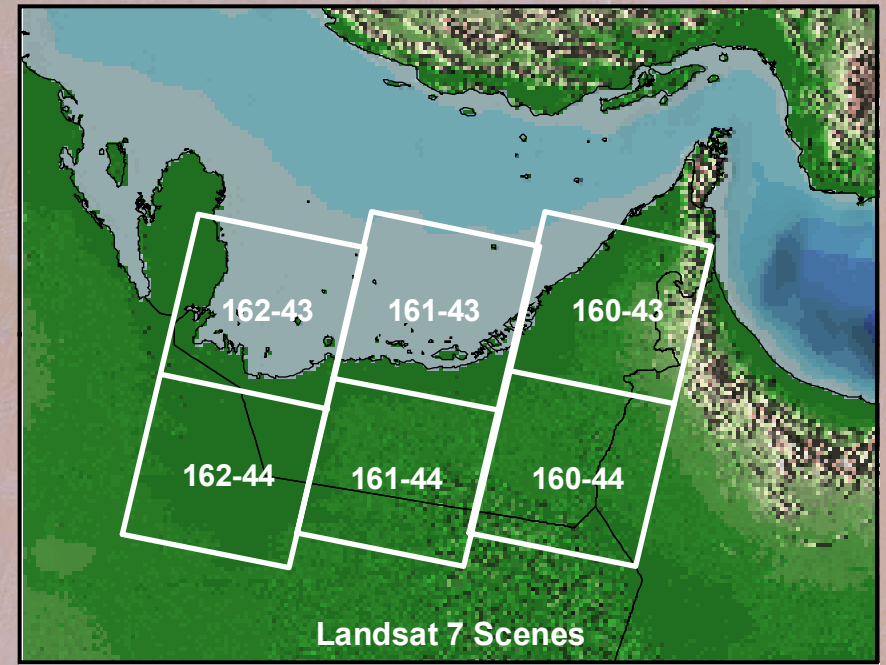
Satellite Image Map

This image map was produced using portions of six satellite scenes. These satellite images were recorded by the Enhanced Thematic Mapper on the Landsat 7 spacecraft in the multispectral mode and are composed of bands 1 (450 - 515 nanometers, blue), 2 (525 - 605 nanometers, green), and 3 (630 - 690 nanometers, red). The spectral bands 1, 2, and 3 are shown in blue, green and red on the image map. This combination of bands produces a pseudo-true color image, where features appear similar to how they would be seen by an observer in space. The Landsat scenes are in the World Reference System 2. The horizontal ground resolution has been resampled to 50 meters.

The Landsat 7 digital imagery was obtained through the United States Geological Survey's National Center for Earth Resources Observation and Science office. Additional information regarding Landsat imagery can be found at the following website: <http://edc.usgs.gov>.

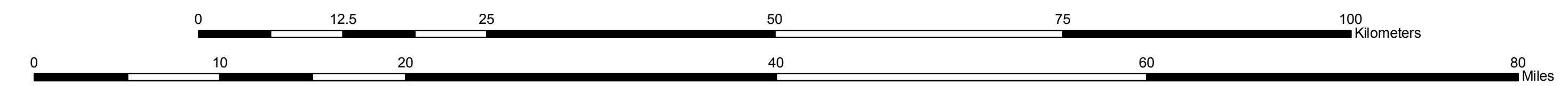
The Landsat scenes used are shown in the diagram at right. Five of the six scenes were acquired after the failure of the Scan Line Corrector (SLC) onboard the Landsat 7 satellite. Data gaps resulting from the SLC failure have been filled with data from earlier scenes. The following are the scenes used and their acquisition dates:

160-43	30 May, 2004	161-44	22 June, 2004
160-44	30 May, 2004	162-43	29 June, 2004
161-43	22 June, 2004	162-44	6 Sept., 2000



Transverse Mercator Projection
Central Meridian 54 degrees east
Nahwan Datum 1967

International boundaries are approximate
and are not authoritative.



1:350,000

This map has been produced by the Ground-Water Research Program, a cooperative research effort between the Abu Dhabi National Drilling Company and the United States Geological Survey.

For additional information write to:
Program Manager
Ground-Water Research Program
P.O. Box 15287
Al Ain, Emirate of Abu Dhabi
United Arab Emirates