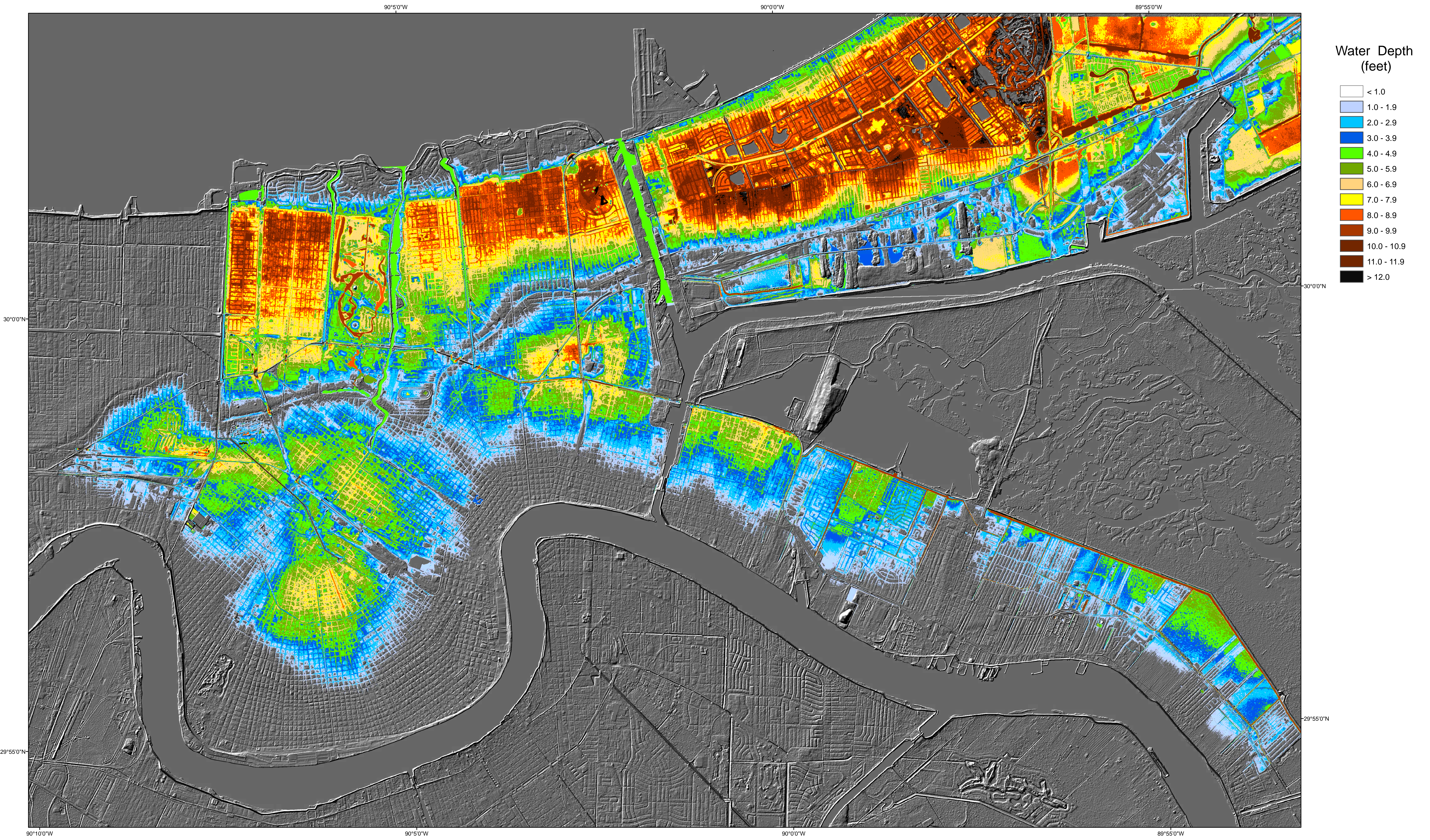
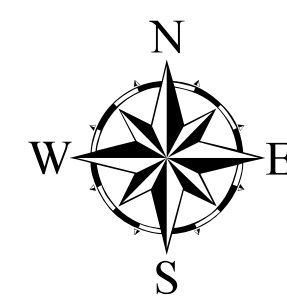


# Hurricane Katrina Flood Water Depth Estimation, New Orleans, Louisiana

Mid-Continent Geographic Science Center



Projection - UTM Zone 15 North, Datum NAD83



0 1 2 4 Miles

Water depth calculations based on a water height of 2.37 feet (based on water gage 073802330 in Lake Pontchartrain on September 2, 2005), and the assumption that the water level in the lake and the city were equal.

Topography derived from 5 meter LIDAR elevation data collected in 2002. Areas further to the east and south of the river have not been included in the calculations. These results have not been validated and are predictions based on elevation only.

Water depth calculation techniques adapted from D. Gesch, USGS.