

Figure 3-1. Rigid-electrode ESP.

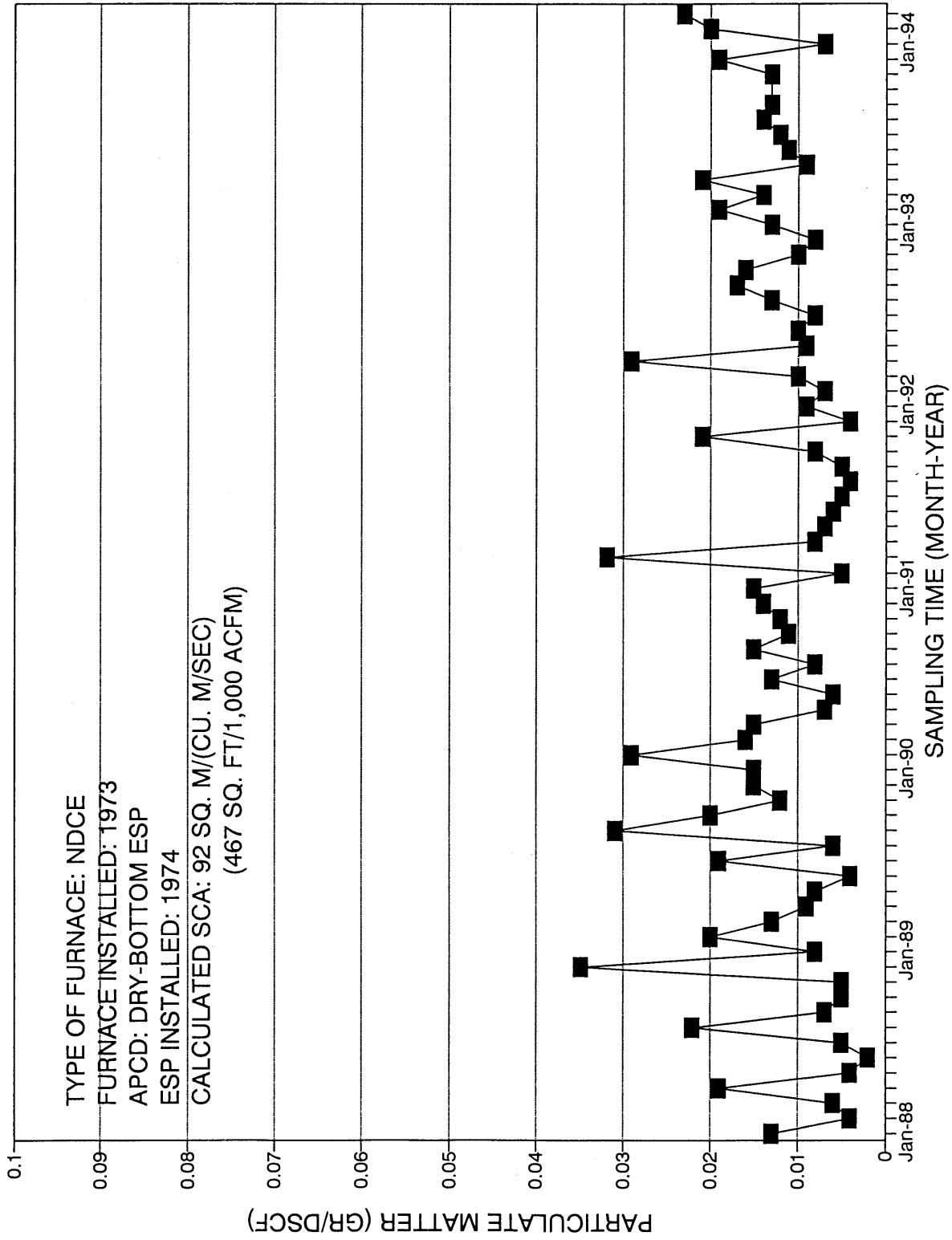


Figure 3-2. PM emission data for recovery furnace No. 3 at Mill A.

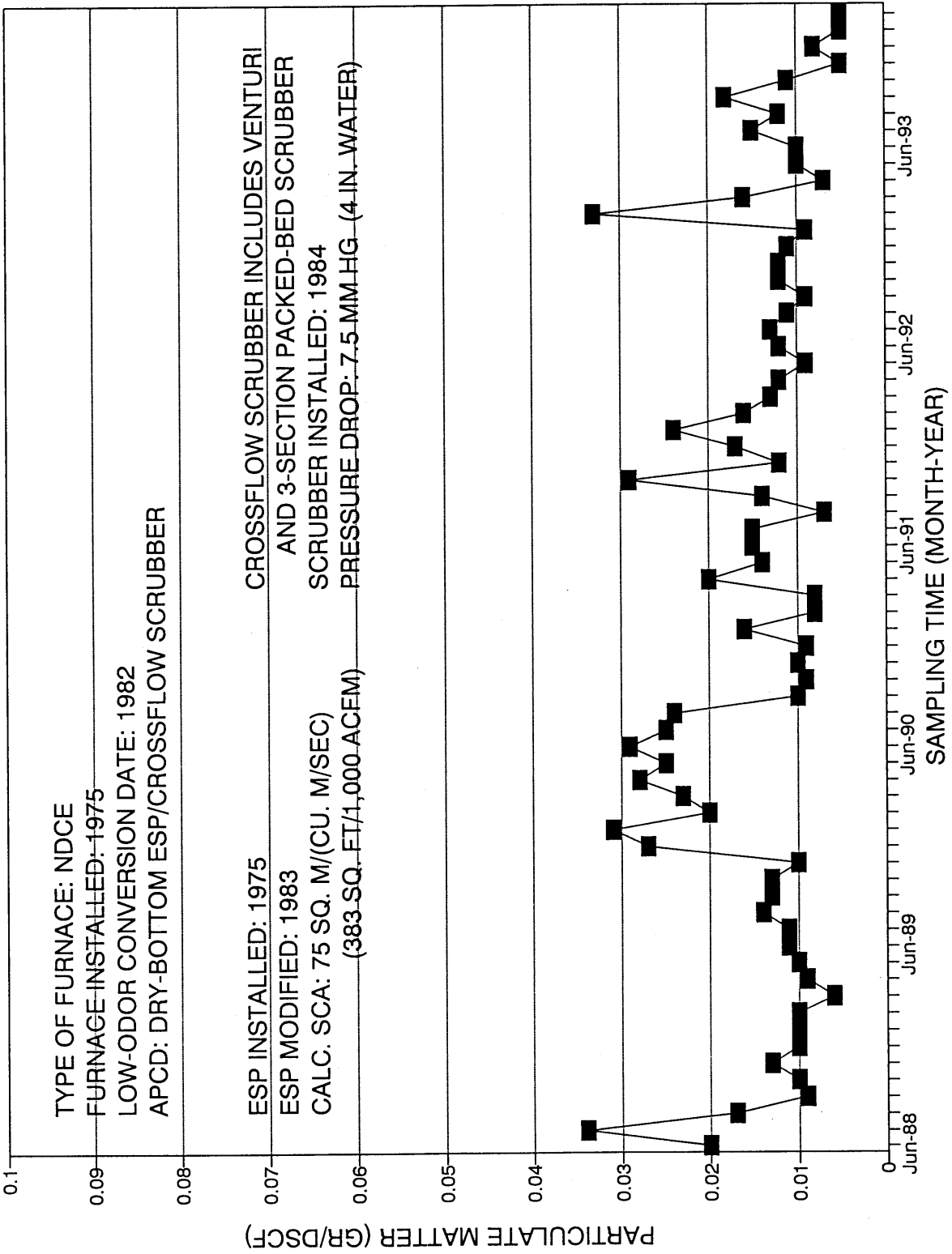


Figure 3-3. PM emission data for recovery furnace No. 4 at Mill B.

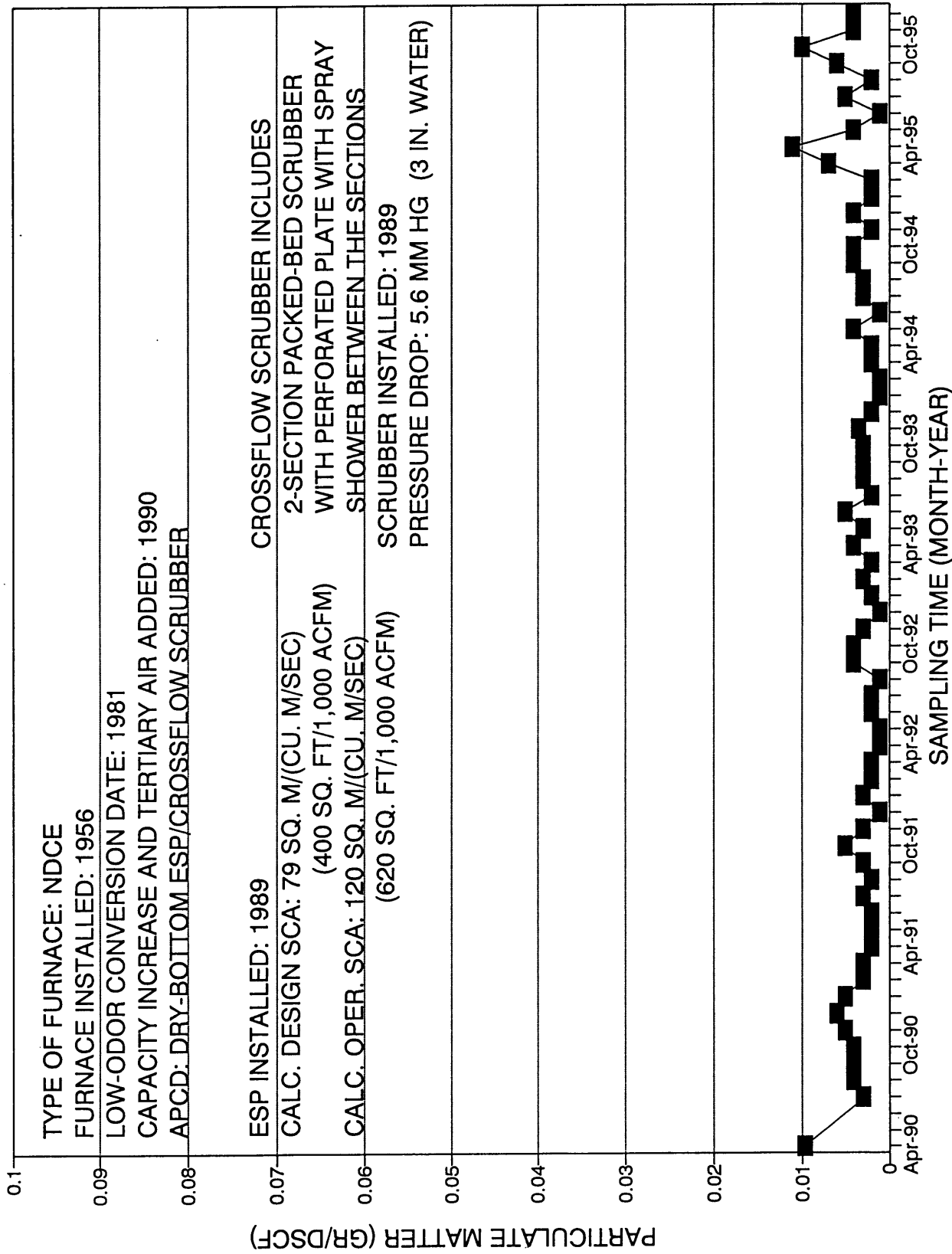


Figure 3-4. PM emission data for recovery furnace No. 3 at Mill B.

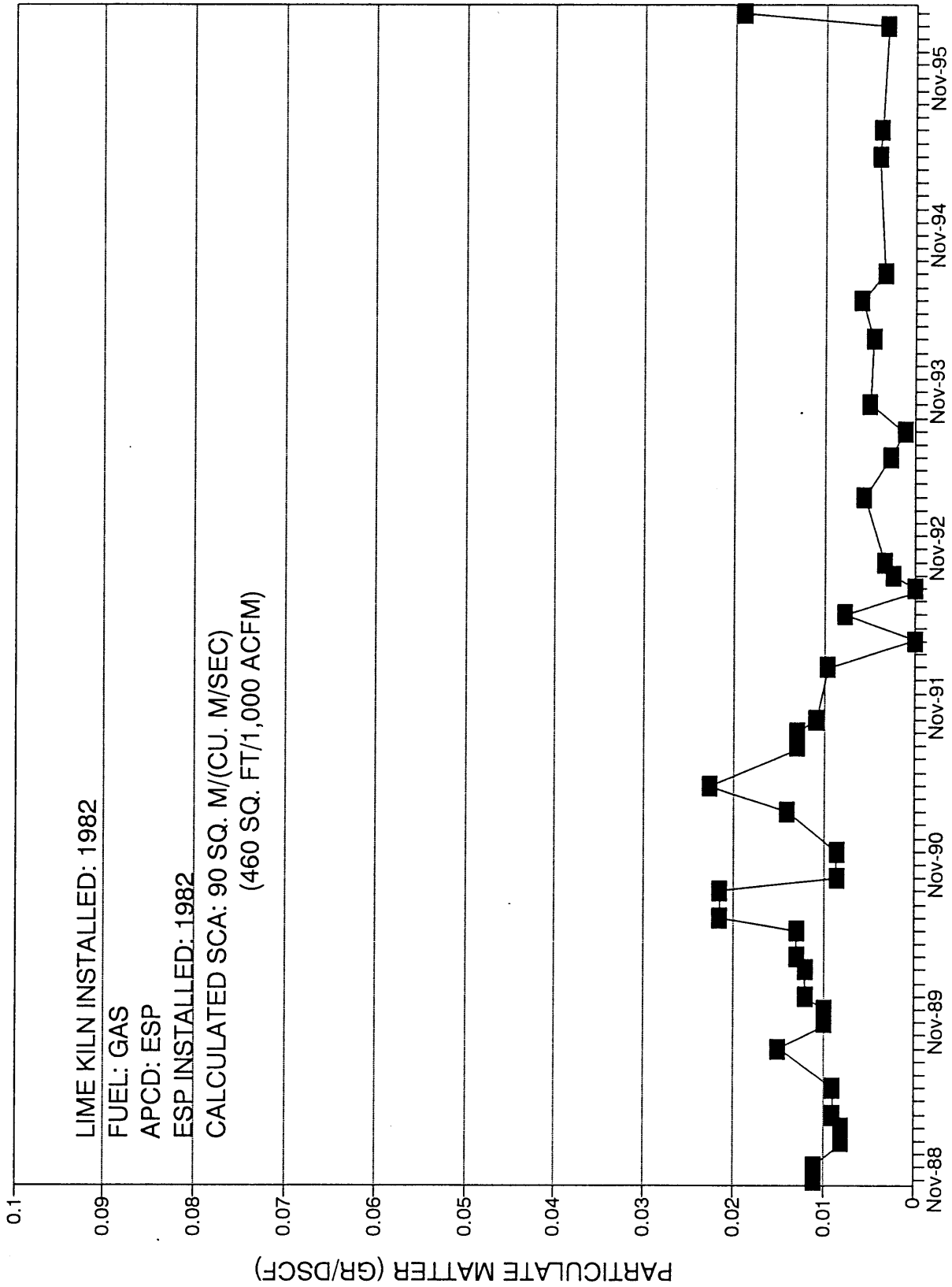


Figure 3-5. PM emission data for lime kiln No. 5 at Mill C.

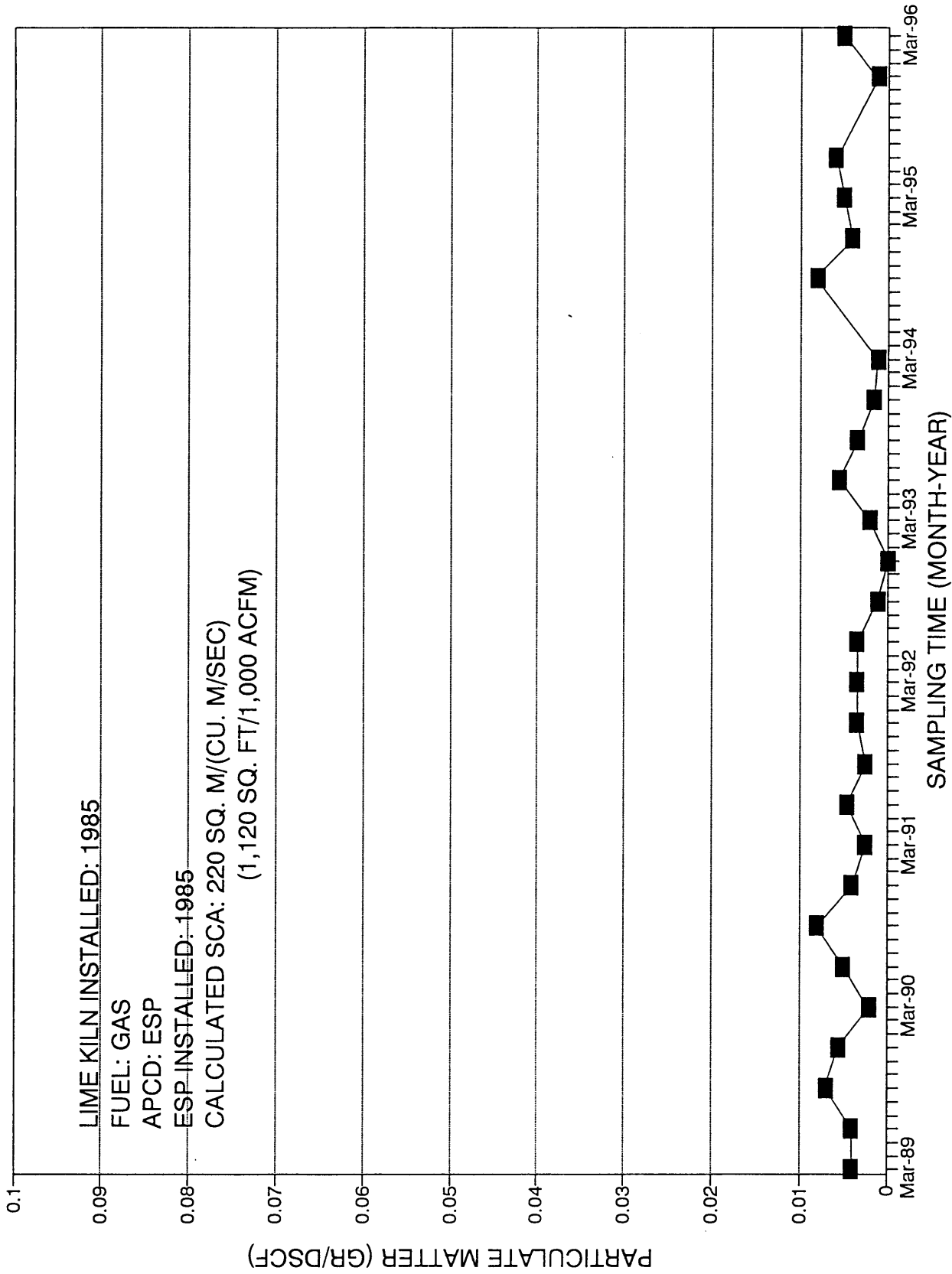


Figure 3-6. PM emission data for lime kiln No. 1 at Mill D.

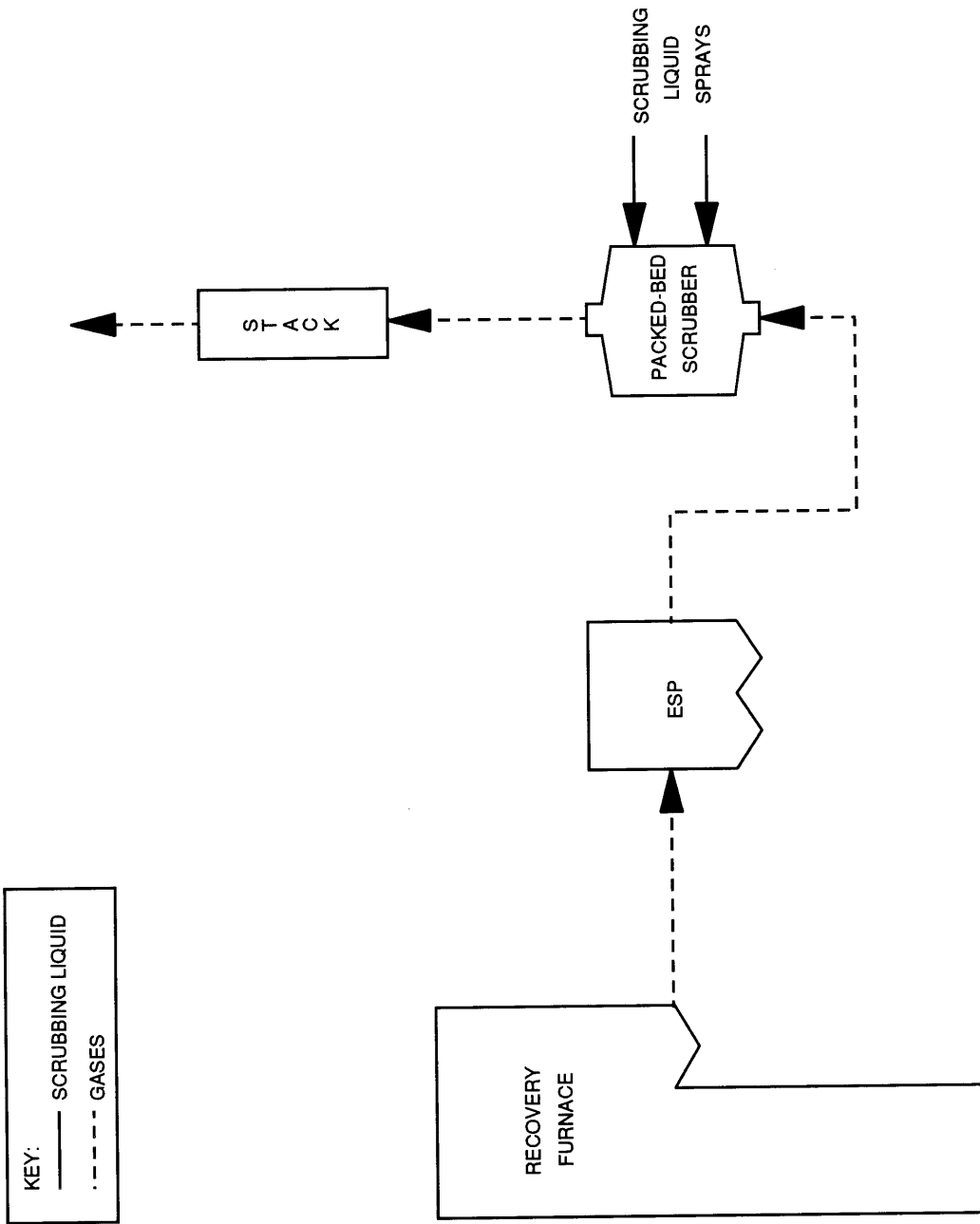


Figure 3-7. Acid gas control system configuration on recovery furnace exhaust gases.

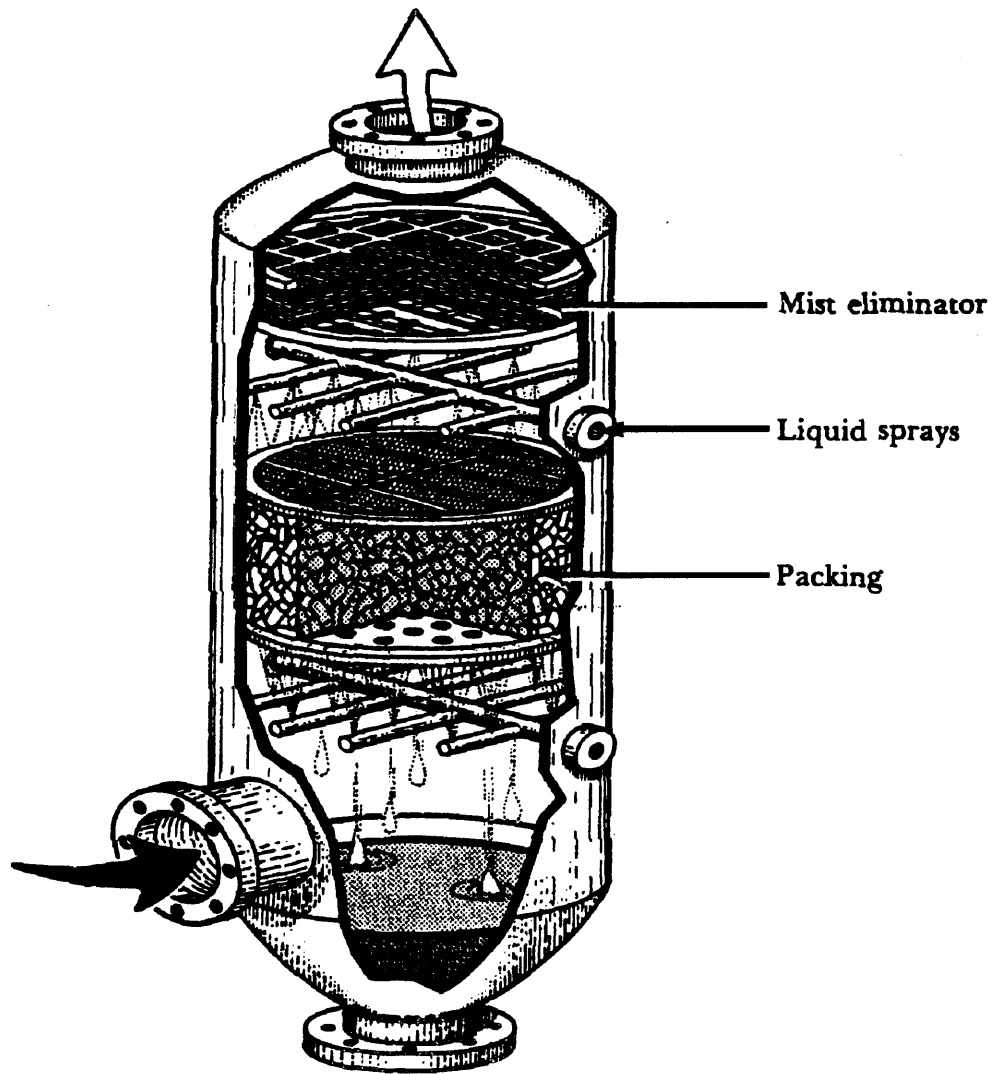


Figure 3-8. Schematic of a counterflow packed-bed scrubber.

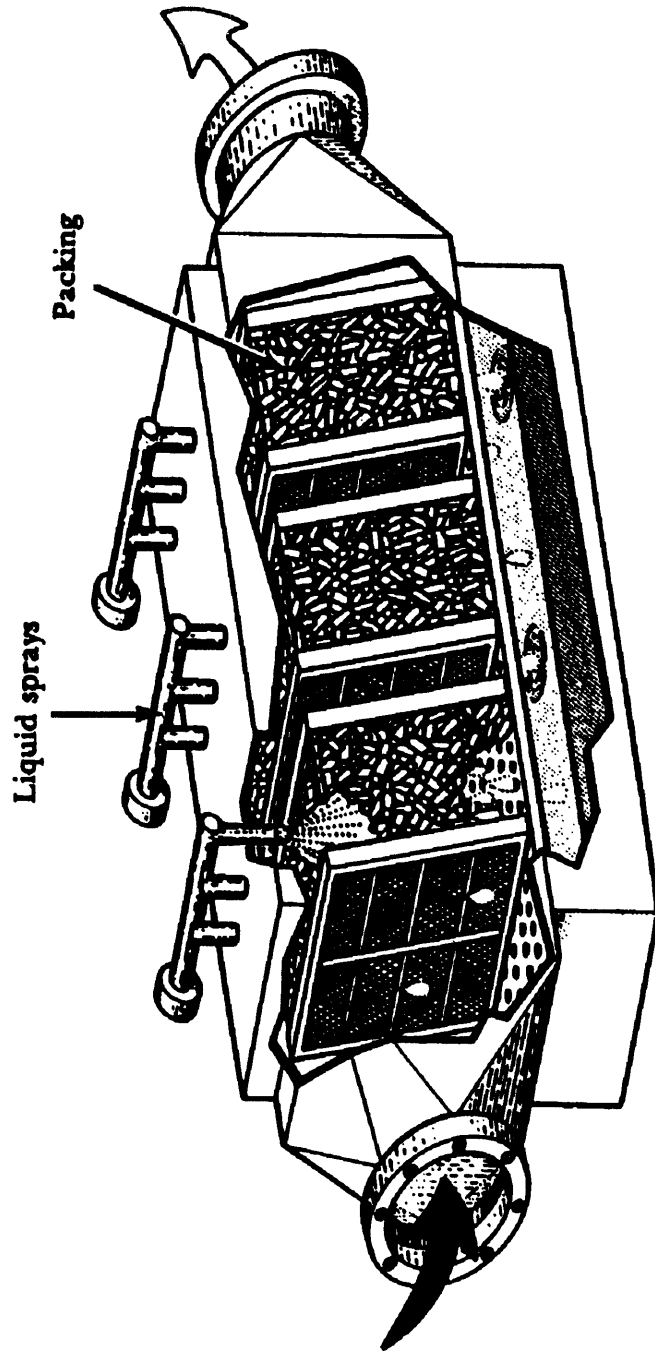


Figure 3-9. Schematic of a cross-flow packed-bed scrubber.

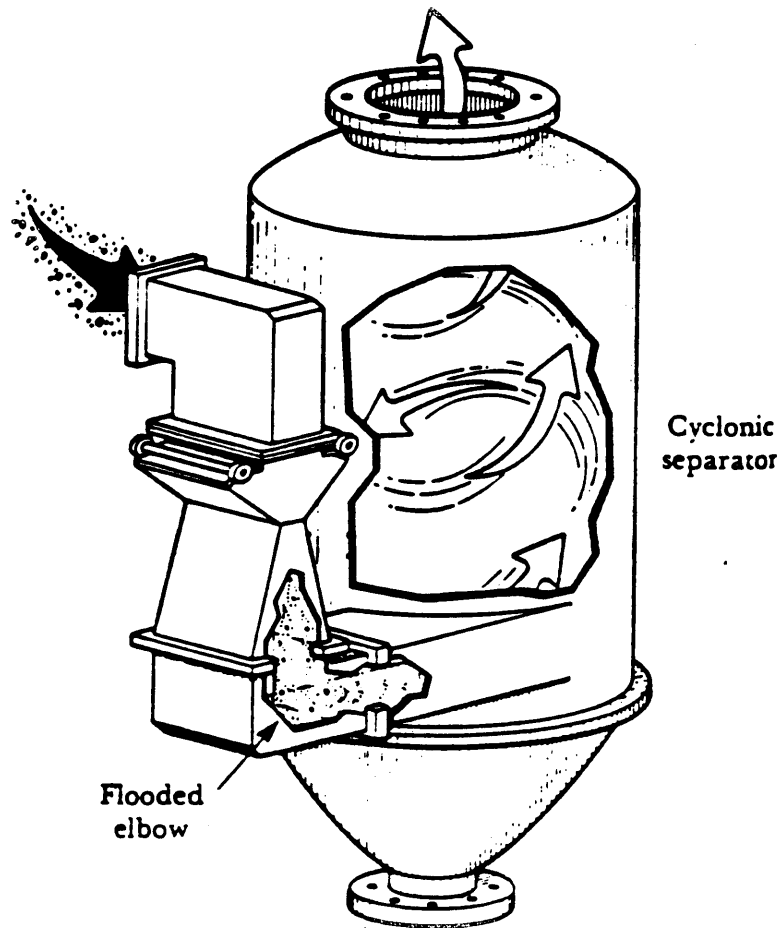


Figure 3-10. Schematic of a venturi scrubber.

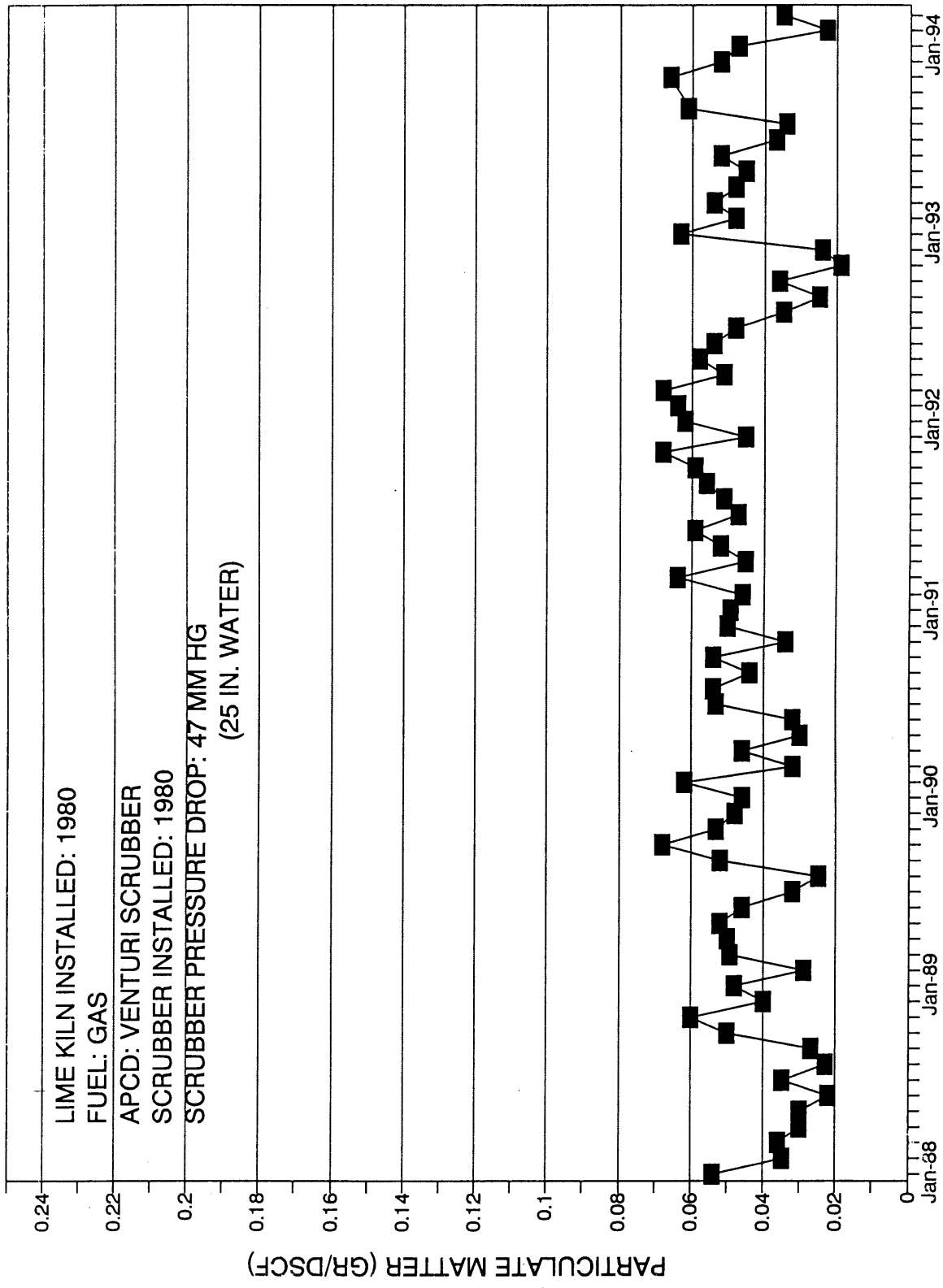


Figure 3-11. PM emission data for lime kiln at Mill A.

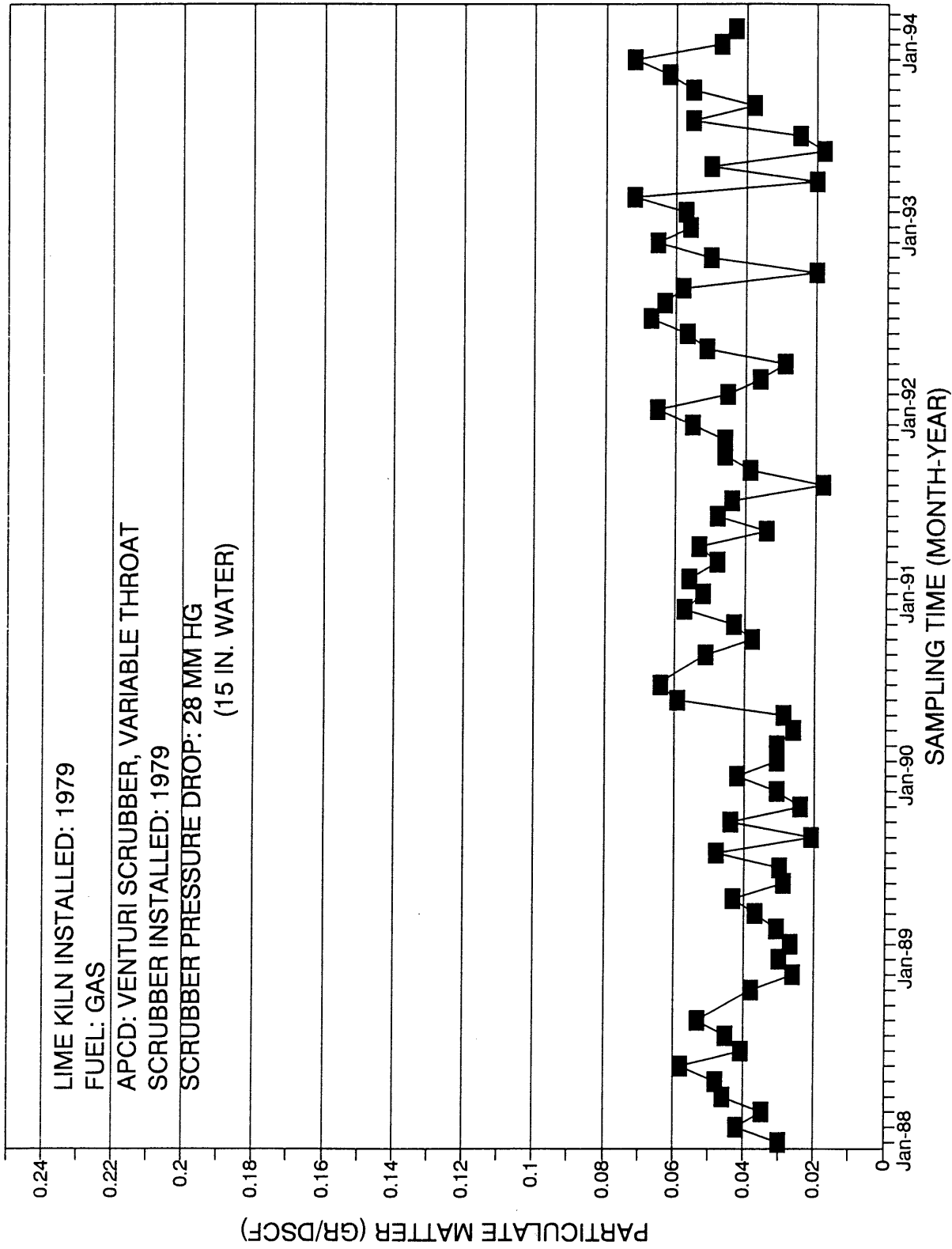


Figure 3-12. PM emission data for lime kiln No. 4 at Mill B.

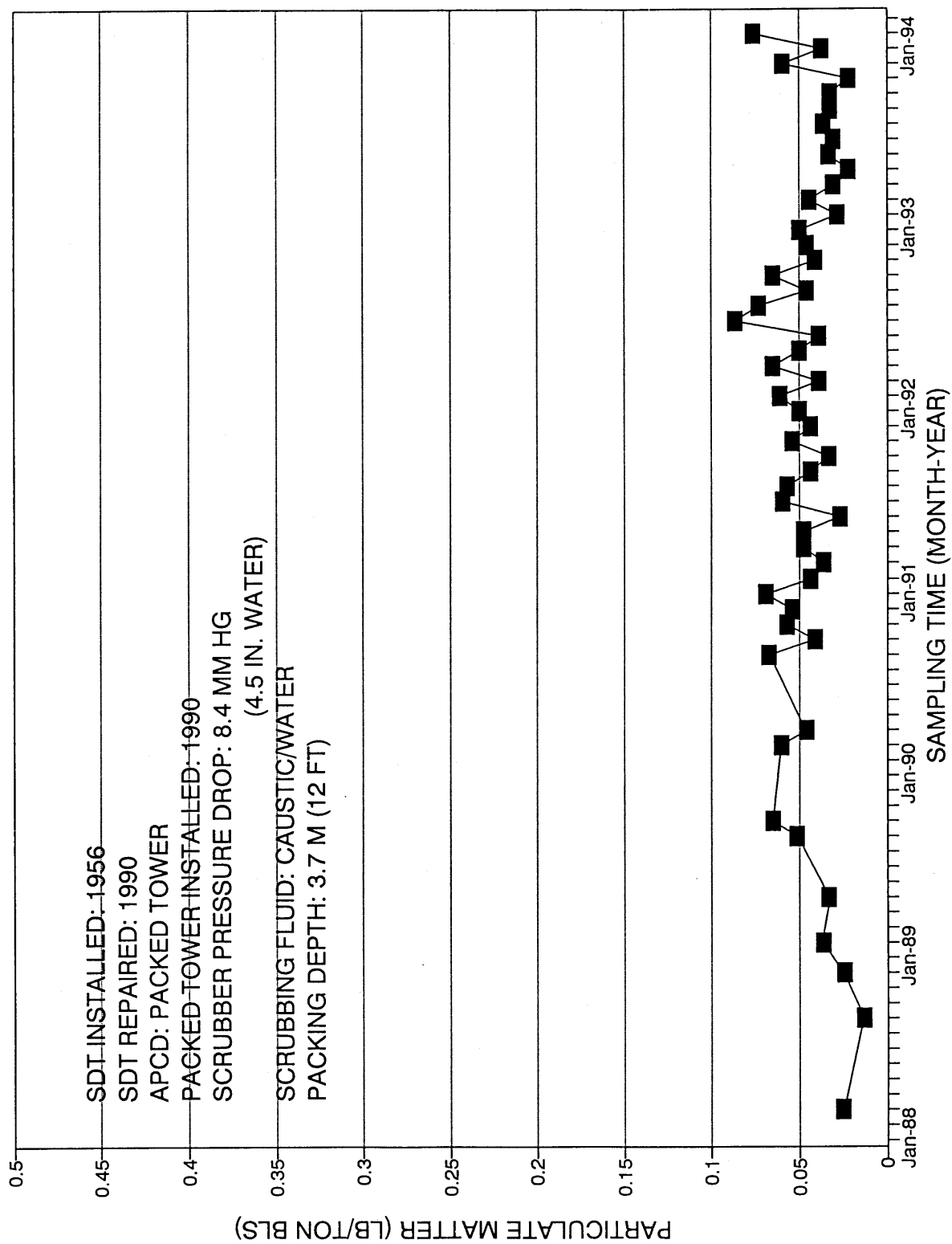


Figure 3-13. PM emission data for SDT No. 3 at Mill B.

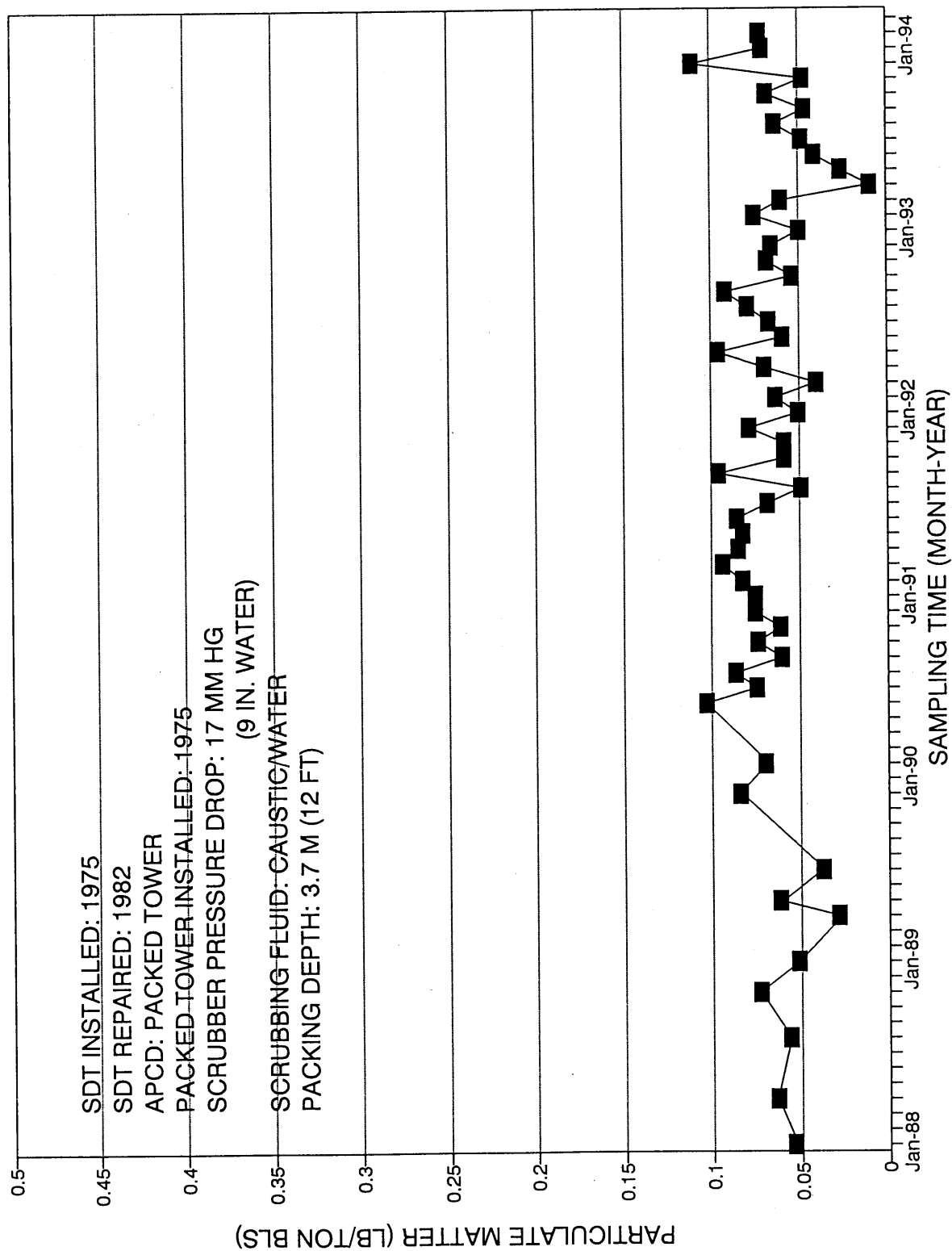


Figure 3-14. PM emission data for SDT No. 4 at Mill B.

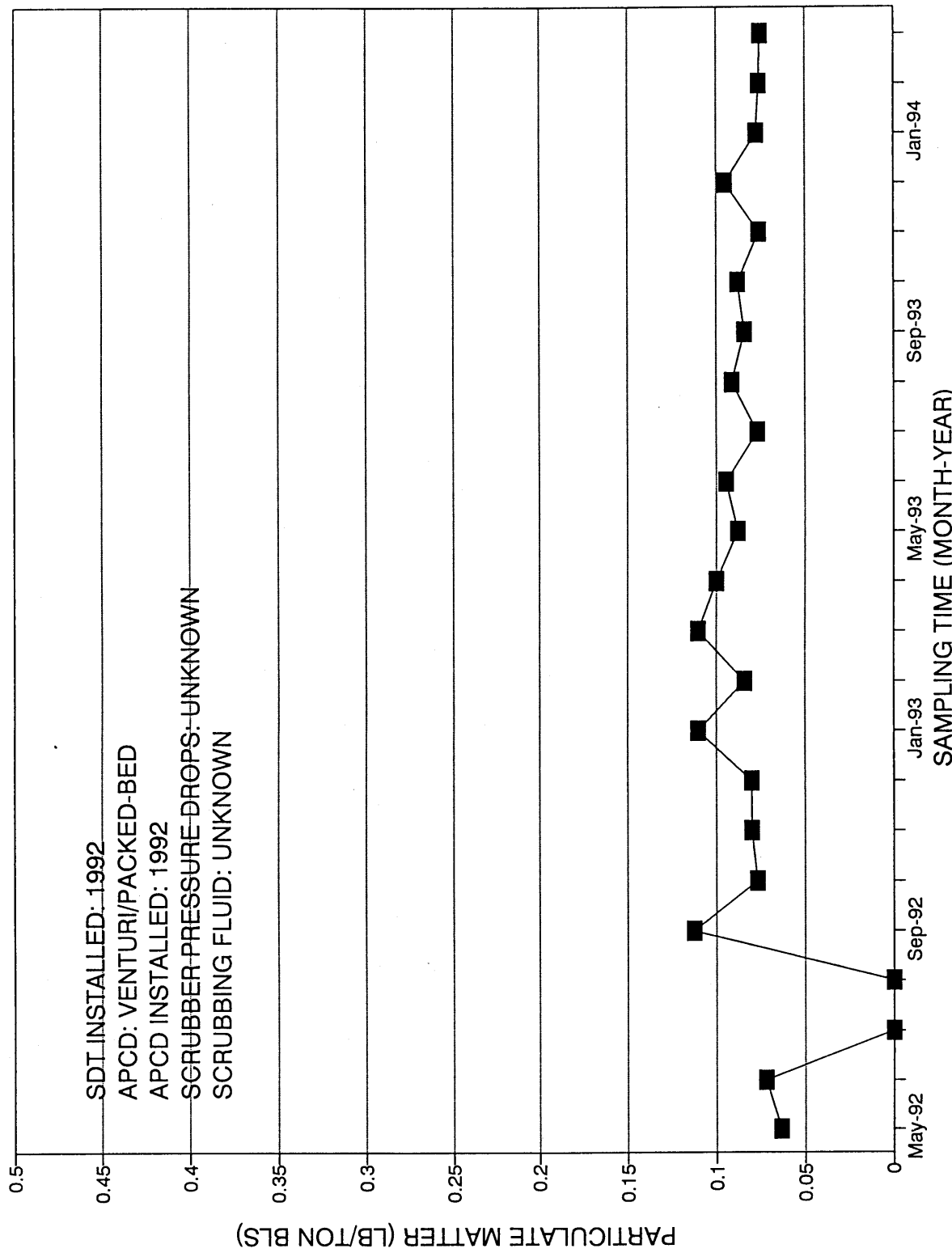


Figure 3-15. PM emission data for SDT No. 22 at Mill C.

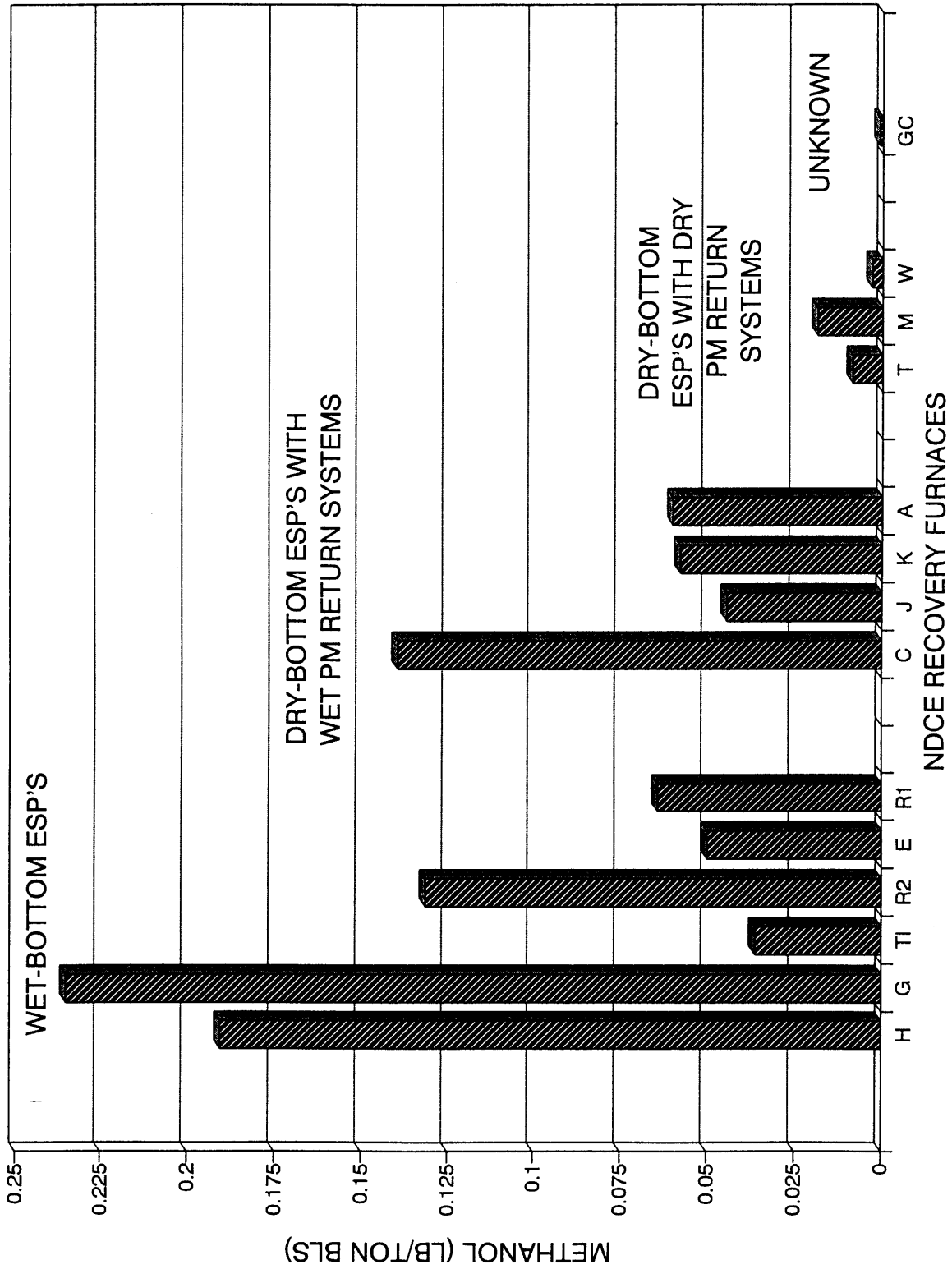


Figure 3-16. Methanol emissions for NDCE recovery furnaces. 52

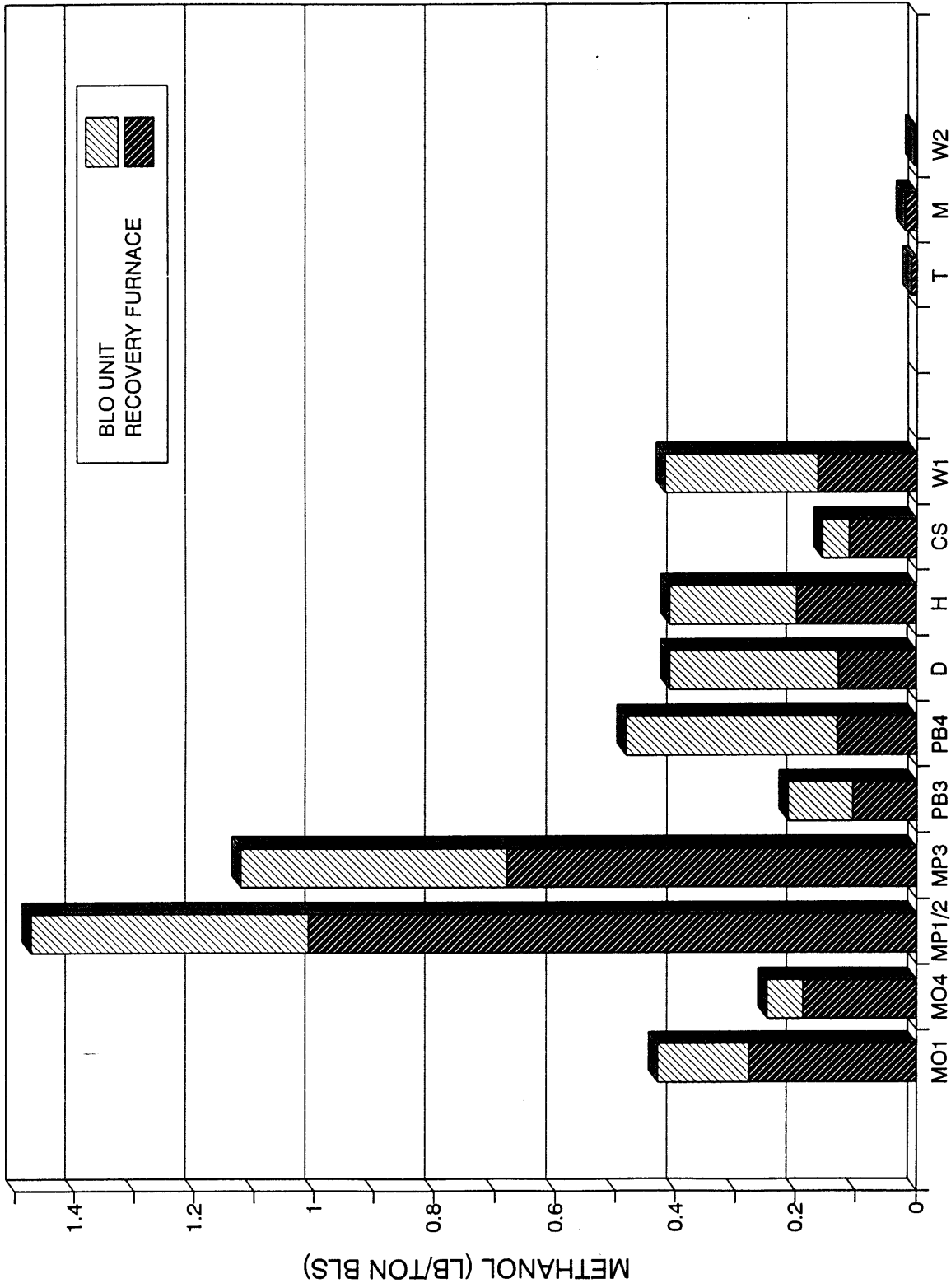


Figure 3-17. Methanol emissions for DCE recovery furnace systems and NDCE recovery furnaces.⁵²

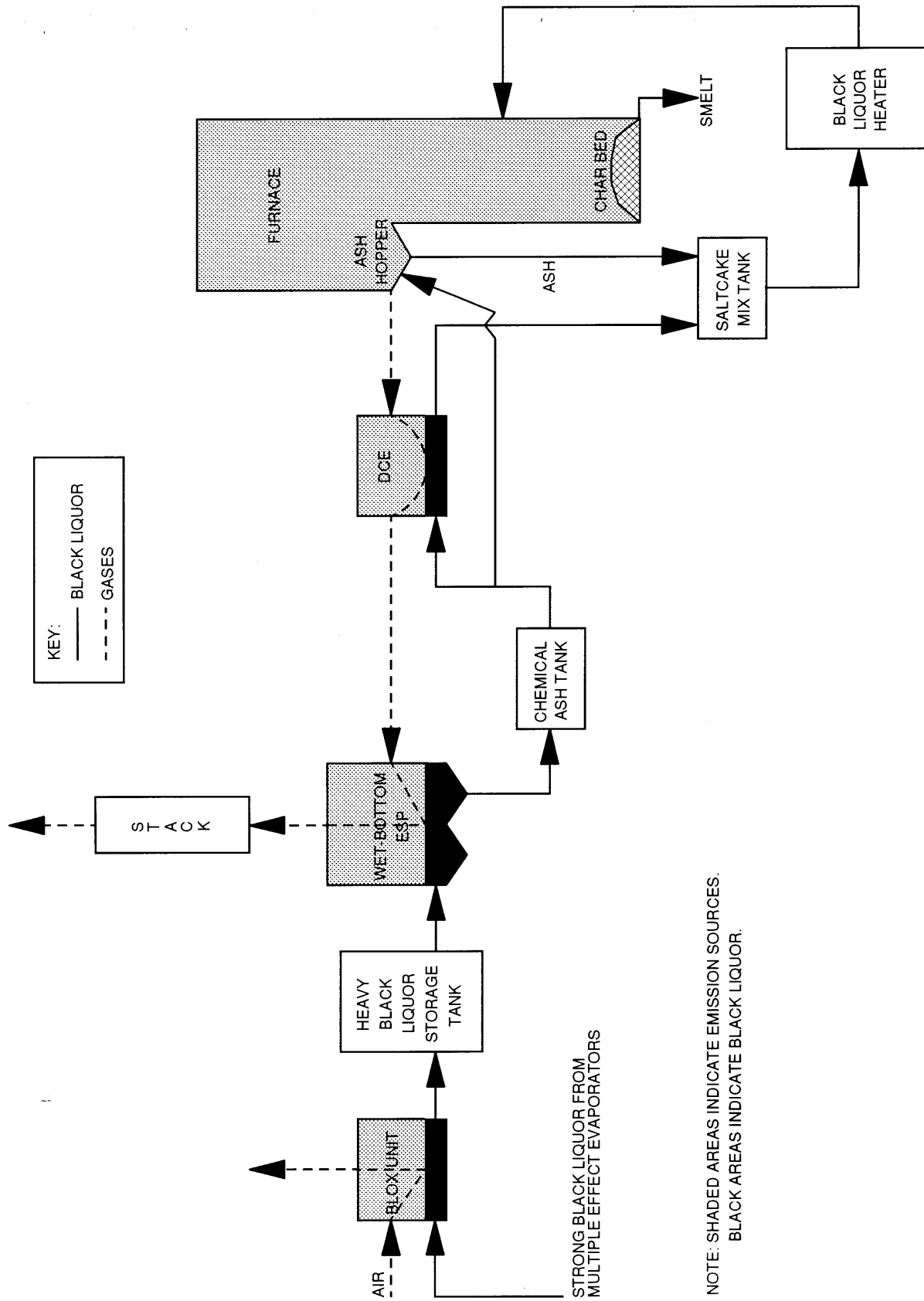


Figure 3-18. Emission sources for a DCE recovery furnace system.

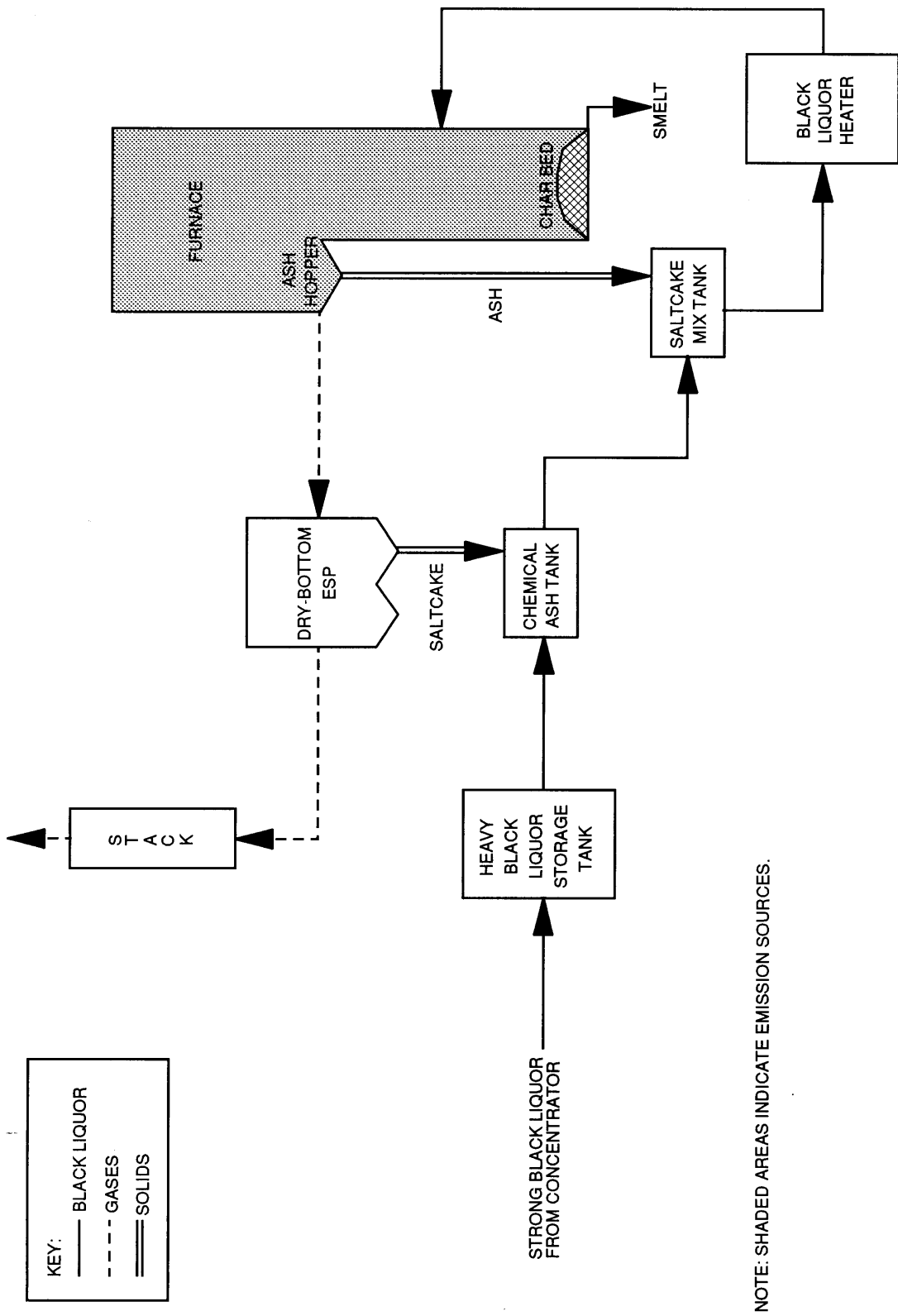


Figure 3-19. Emission sources for an NDCE recovery furnace.