

General Provisions

Wheeler National Wildlife Refuge is one of over 540 national wildlife refuges. The primary objective of a national wildlife refuge is to provide habitat for the conservation and protection of all species of wildlife. The harvest of surplus animals is one tool used to manage wildlife populations. Carefully managed hunts maintain wildlife populations at a level compatible with the environment, provide wholesome recreational opportunities and permit the use of a valuable renewable resource.

The regulations listed below supplement the general regulations which govern hunting on wildlife refuge areas as set forth in Title 50, Code of Federal Regulations. State bag limits, arms and ammunition and other applicable State regulations apply.

Public hunting on Wheeler National Wildlife Refuge is permitted on approximately 18,000 acres.

Squirrel, raccoon, opossum, quail and rabbit hunting is prohibited west of Flint Creek (see map).

No hunting is allowed in the Triana Recreation Area or within 100 yards of any public building, public road, walking trail, or boardwalk.

No overnight camping is allowed.

Mules and horses are prohibited on all refuge hunts.

Hunting is allowed Monday-Saturday. **No Sunday hunting.**

Dogs may be used on the rabbit, raccoon, quail, squirrel and opossum hunts.

It is unlawful to damage a tree or to hunt from a tree in which a metal object has been inserted. Tree stands must be removed from trees after each days hunt.

Those requiring special assistance to participate in refuge hunts are encouraged to contact the Visitor Center at 256/350 6639 for information.

General Hunt Regulations

Caution: other members of public may be in area and without hunter orange.

Safety belts required at all times with the use of tree stands.

Overnight mooring of boats is prohibited.

Marking of trees, flagging tape, and reflective tacks are prohibited.

An area around the Visitor Center is closed to all public entry. This area is posted with "Area Closed" signs (see map).

Hunters under age 16 must have passed a State approved hunter education course, must be supervised by an adult 21 years of age or older, and must remain in sight and normal voice contact with the adult. On small game hunts, the adult may supervise no more than two youths, and on big game hunts no more than one youth.

Some refuge gates will be closed. **Do not block gates. Your vehicle will be towed.**

Archery and flintlock deer hunters must wear a minimum of 144 square inches of hunter orange as defined by the State when the State gun deer season is open in Limestone, Madison and Morgan counties.

Hunting by aid of or distributing any feed, salt or other minerals is prohibited.

Only licensed vehicles and bicycles permitted. No ATV's. Access is limited to graveled roads.

All deer and feral hogs killed must be reported to Wheeler Refuge within 72 hours. Phone Visitor Center: 256/350 6639 or Headquarters: 256/353 7243.

In accepting this brochure, hunter concedes right of inspection of game bag, hunting coat, etc., as provided for by State law, to Refuge Officers and State Conservation Officers.

Wheeler National Wildlife Refuge
2700 Refuge Headquarters Road
Decatur, AL 35603
256/350 6639
<http://wheeler.fws.gov>

U.S. Fish & Wildlife Service
1 800/344 WILD

August 2008



U.S. Fish & Wildlife Service

Wheeler

National Wildlife Refuge Hunting Regulations & Permit 2008-2009



Keep this portion of the brochure with you while hunting. This brochure does not authorize you to hunt refuge lands within Redstone Arsenal.

Wheeler National Wildlife Refuge Hunt Permit 2008-2009

When signed and in your possession, this brochure will serve as your permit, and an indication that you have read and fully understand the special regulations of the permit.

Signature
(Valid only when signed.)

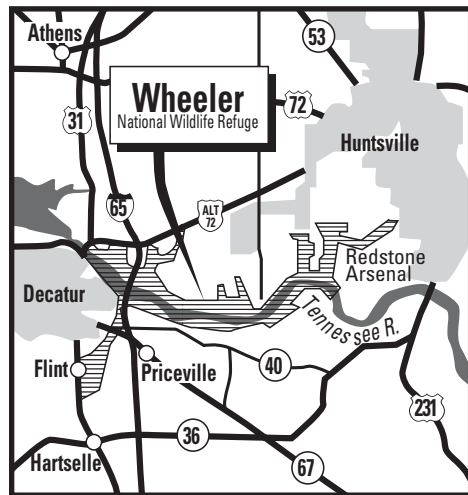
For deer and feral hog hunting only bows with broadhead arrows and flintlocks, .40 caliber or larger are to be used.

For small game, **shotguns are allowed with non-toxic shot only**; rifles and pistols are limited to rimfire.

Possession of lead shotgun shells is prohibited.

Participating in man drives for deer and feral hogs is prohibited.

Firearms must be unloaded and encased or dismantled before being placed in a vehicle or a boat.



Specific Hunt Regulations
Squirrel

Season: October 1-13 and February 10-28

Raccoon and opossum

Season: February 10-28, night hours only (hunting must not begin until sunset February 10)

Rabbit

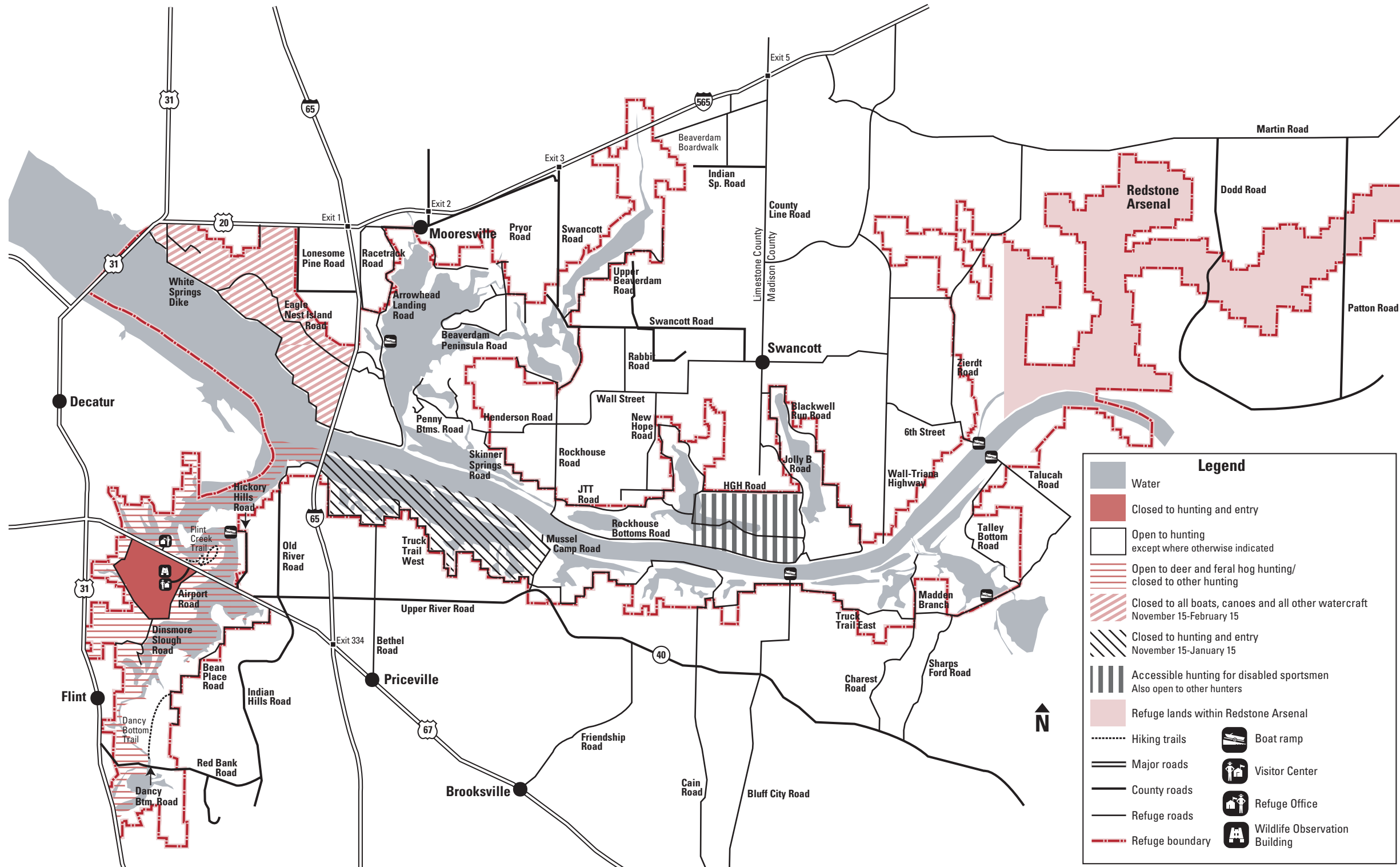
Season: October 1-13 and February 10-28

Quail

Season: February 10-28

Deer—Either Sex and Feral Hog

Season: Archery: October 15-January 31
Flintlock: January 8-January 24



Legend

- Water
- Closed to hunting and entry
- Open to hunting except where otherwise indicated
- Open to deer and feral hog hunting/ closed to other hunting
- Closed to all boats, canoes and all other watercraft November 15-February 15
- Closed to hunting and entry November 15-January 15
- Accessible hunting for disabled sportsmen Also open to other hunters
- Refuge lands within Redstone Arsenal
- Hiking trails
- Major roads
- County roads
- Refuge roads
- Refuge boundary
- Boat ramp
- Visitor Center
- Refuge Office
- Wildlife Observation Building