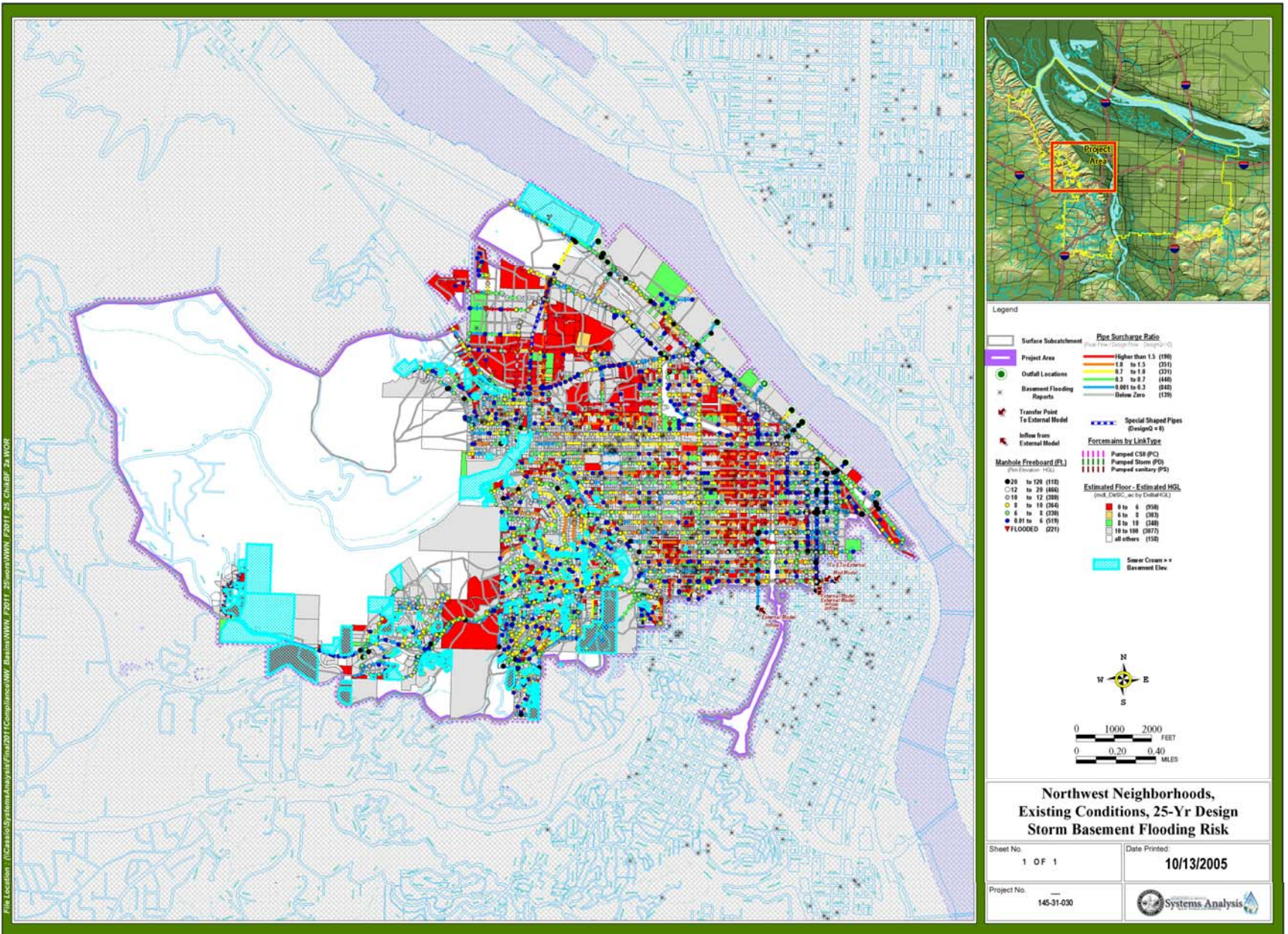
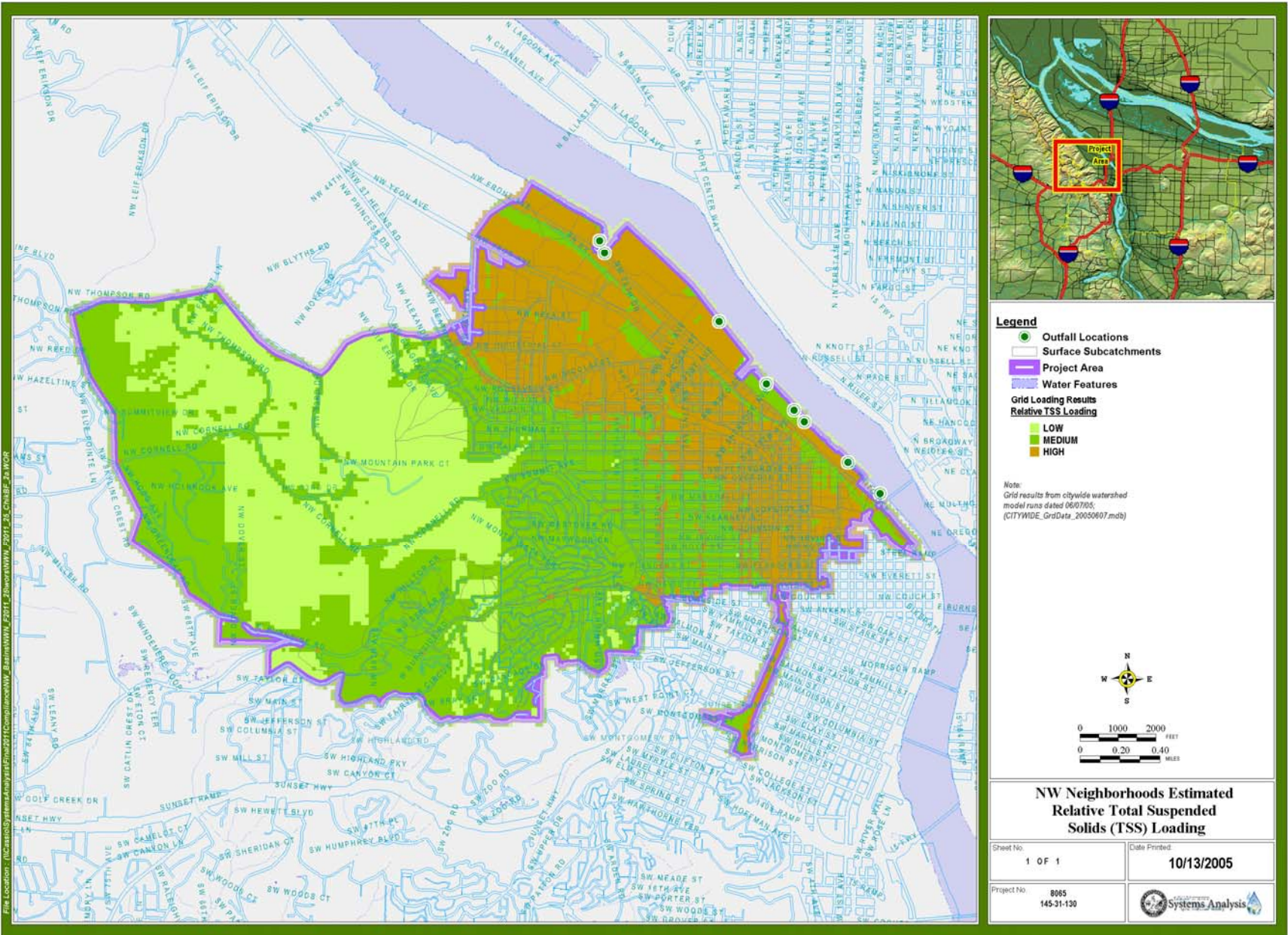


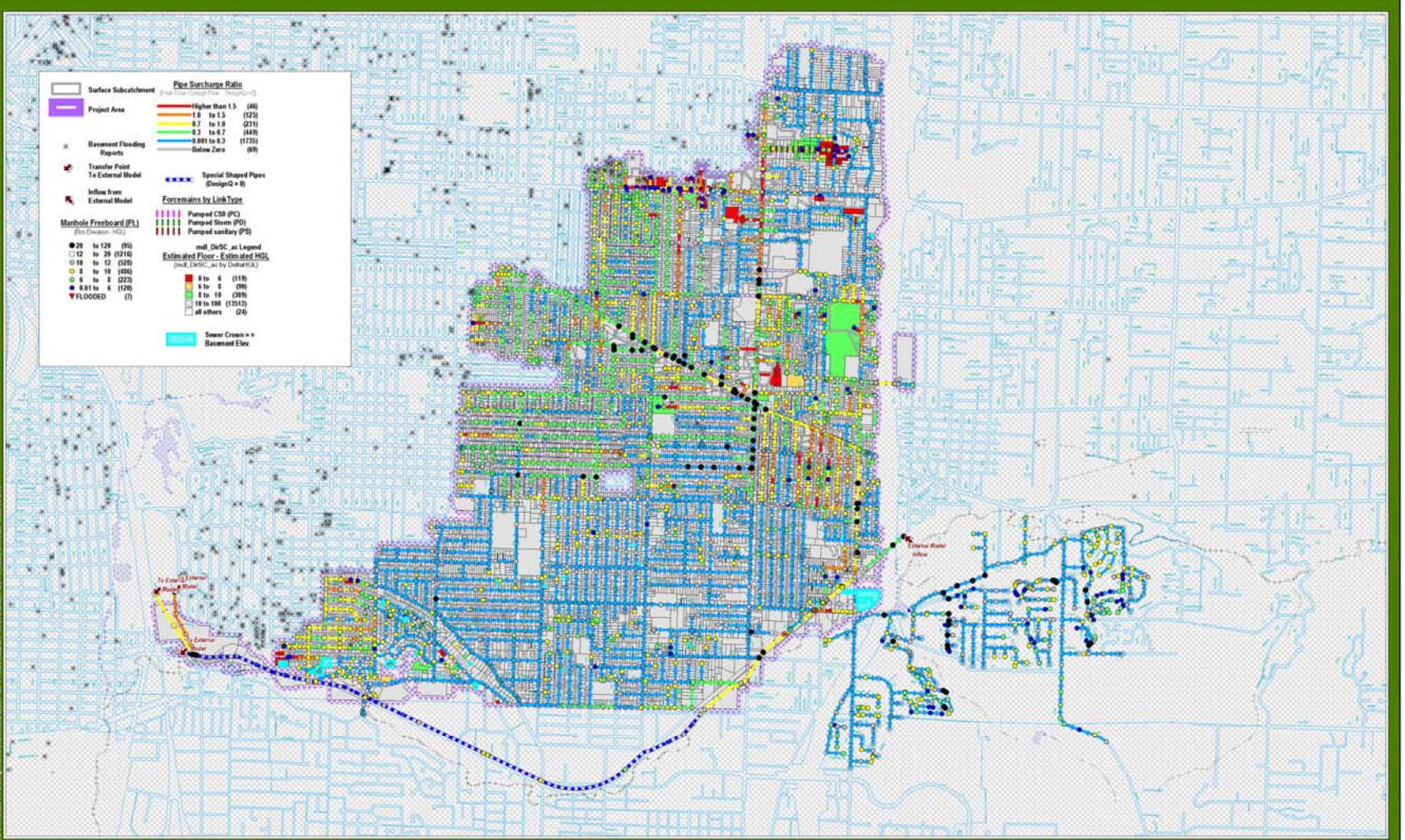
City of Portland Overview



NW Neighborhood Basement Flooding Risk



NW Neighborhoods Estimated TSS Loading

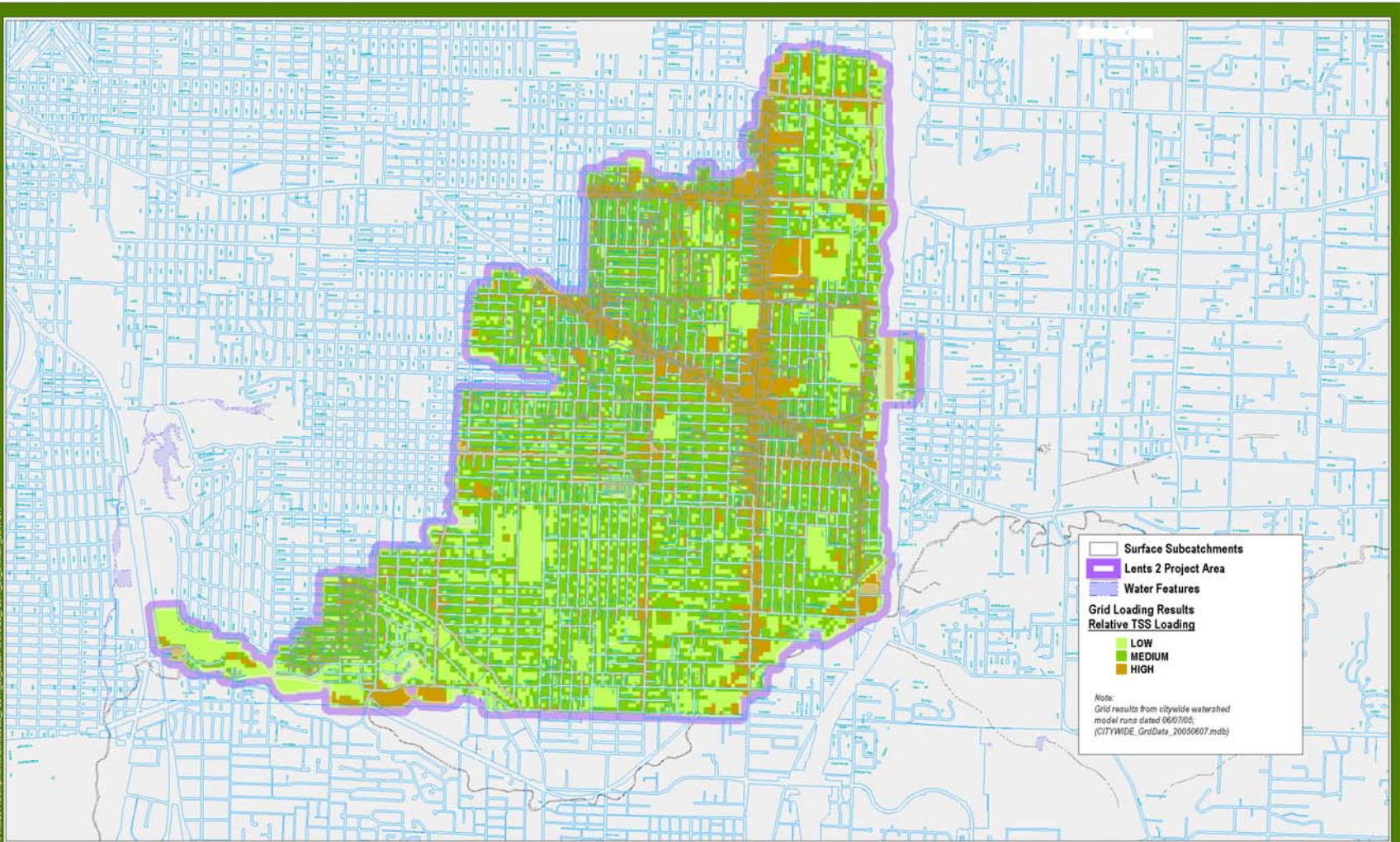


Lents 2, Existing Conditions,
25-Year Design Storm
Basement Flooding

Sheet No.	1 OF 1	Date Printed	10/13/2005
Project No.	145-31-030		

Lents 2 Basement Flooding Risk

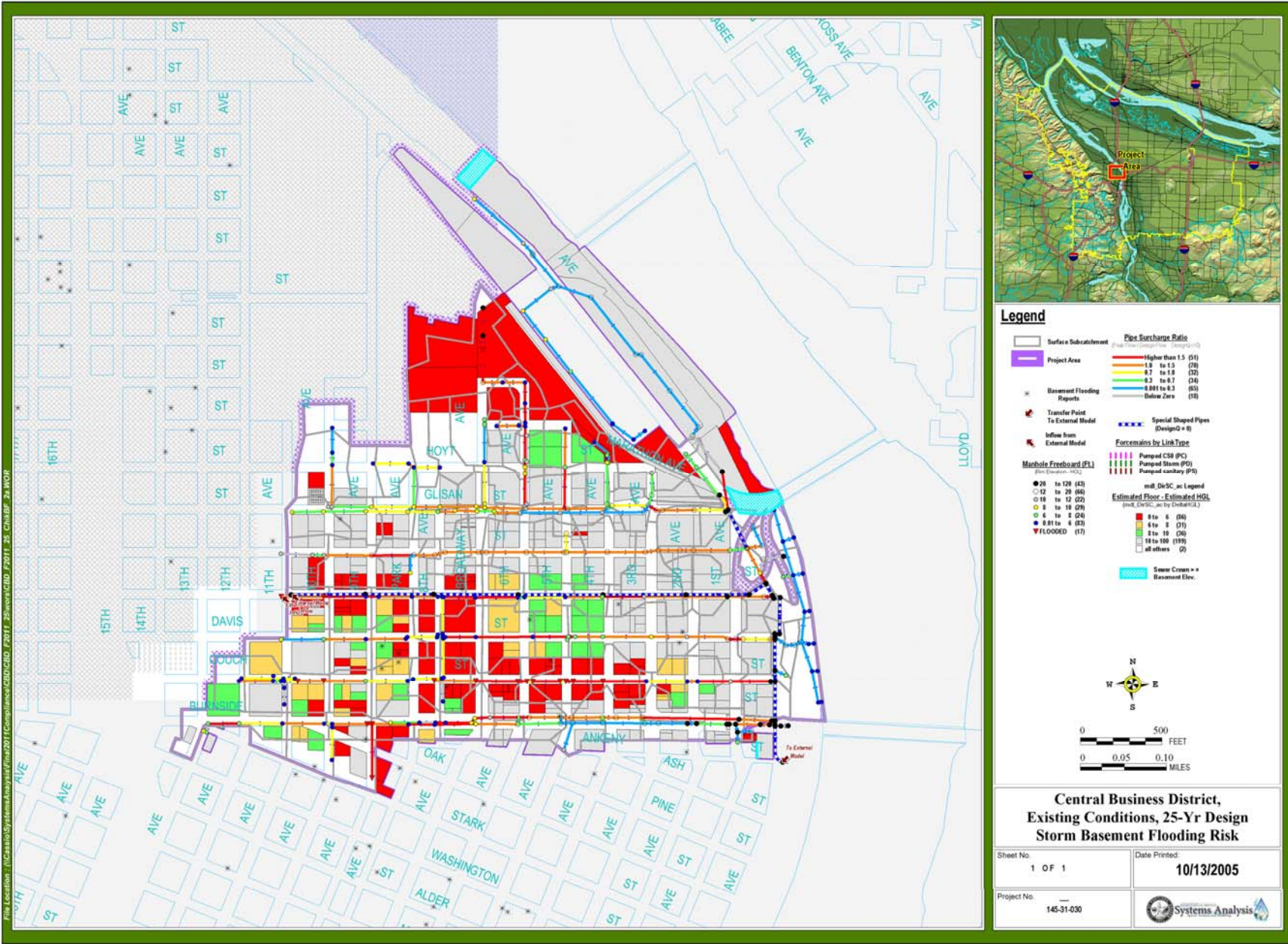
File Location: I:\CassioSystems\Analysis\lents2\2011-25-EDQ\lents2\2011-25-ChB\F_24.WOR



Lents 2 Relative Total Suspended Solids(TSS) Loading

Sheet No.	1 OF 1	Date Printed	10/13/2005
Project No.	8065 145-31-130		

Lents 2 Estimated TSS Loading



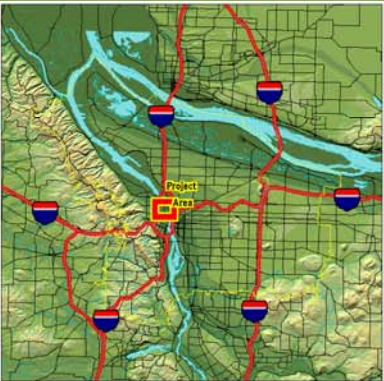
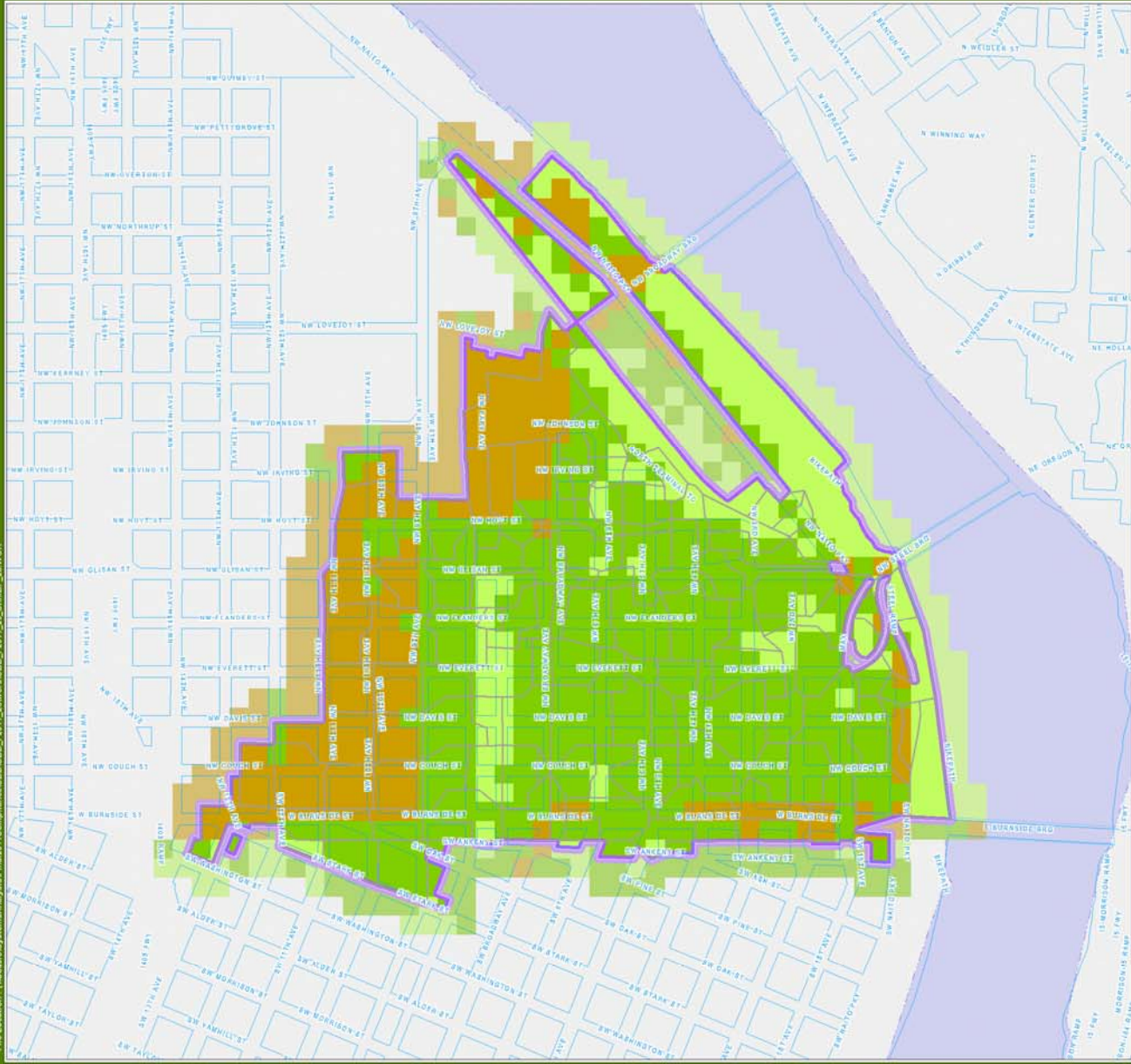
File Location: \\C:\GIS\GIS\SystemAnalysis\Yr14\2011\Compliance\CBD\CBD_2011_25\sewer\CBD_2011_25_ChaSRP_2a.WOR

CBD Basement Flooding Risk

**Central Business District,
Existing Conditions, 25-Yr Design
Storm Basement Flooding Risk**

Sheet No. 1 OF 1	Date Printed 10/13/2005
Project No. 145-31-030	

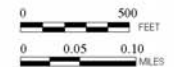
File Location: \\C:\casio\systems\analysis\Final\2011Compliance\CBD\CBD_F011_25_Ch1BE_2a.WOR



Legend

- Surface Subcatchments
 - CBD Project Area
 - Water Features
- Grid Loading Results**
Relative TSS Loading (Pounds)
- LOW (-0.001 to 97) (275)
 - MEDIUM (97 to 186) (552)
 - HIGH (186 to 278) (281)

Note:
Grid results from citywide watershed model runs dated 06/07/05; (CITYWIDE_GridData_20050607.mdb)



**Central Business District
Total Suspended Solids
(TSS) Loading**

Sheet No:
1 OF 1

Date Printed:
10/13/2005

Project No:
8065
145-31-130



Central Business District Estimated TSS Loading