

Spatial Analytical Methods and Future Scenarios

**Ecological Sustainability in Rapidly Urbanizing
Watersheds: Evaluating Strategies Designed to Mitigate
Impacts on Stream Ecosystems**

[Meosotis Curtis](#) and [Keith Van Ness](#),
Montgomery County Department of Environmental Protection

Co-Principal Investigators: [Margaret A. Palmer](#), [Meosotis Curtis](#), [Amy Hennessey](#),
[Kevin Kelly](#), [Keith Van Ness](#)

Collaborative Science and Technology Network
for Sustainability Progress Review Workshop
October 18-19, 2005
Washington DC



Collaborators

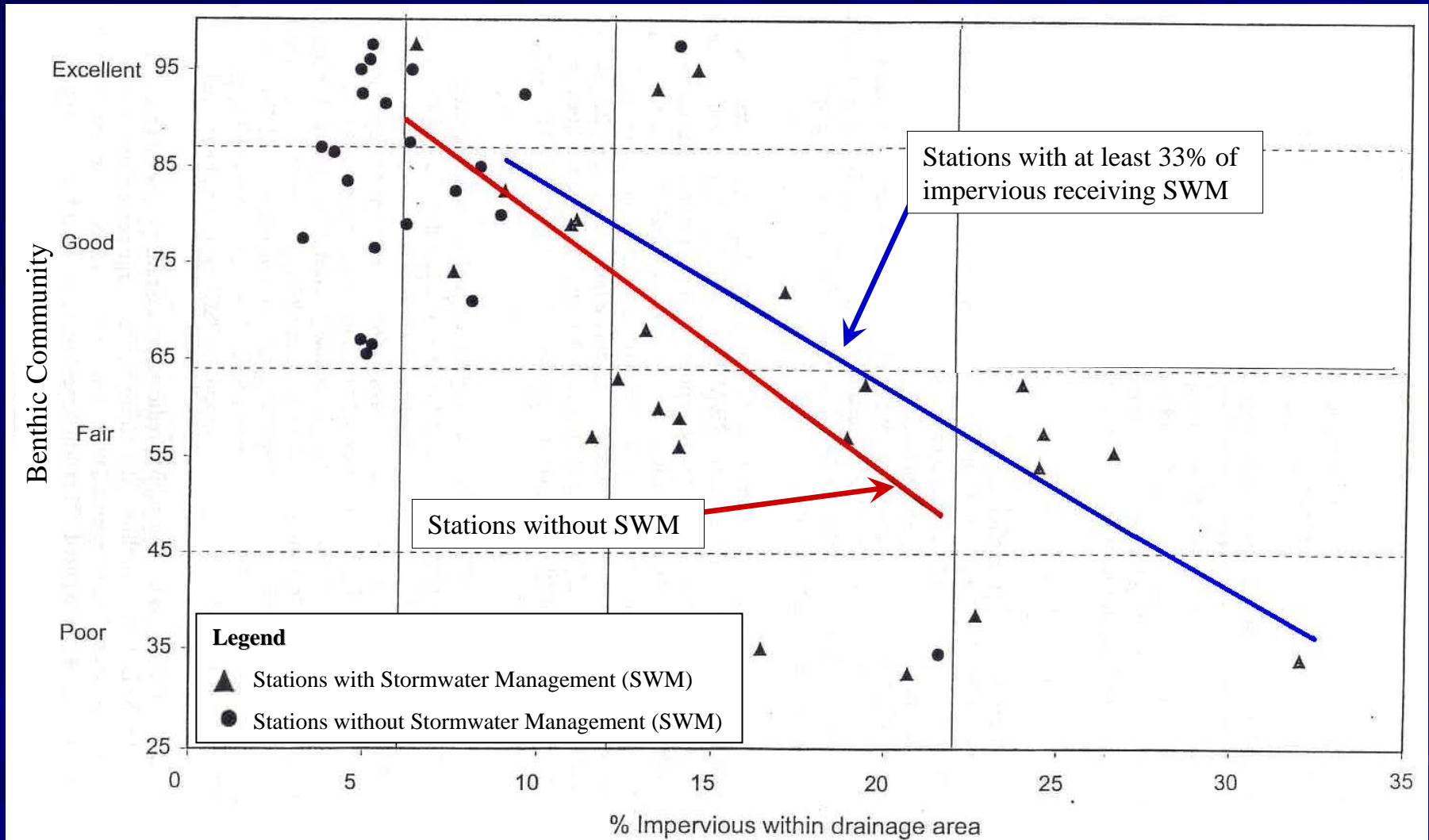
- The Palmer Lab
- Montgomery County
Department of Environmental Protection
- ESA, Inc.
- USGS-Water Resources Division
- EPA Environmental Photographic
Interpretation Center



Goals

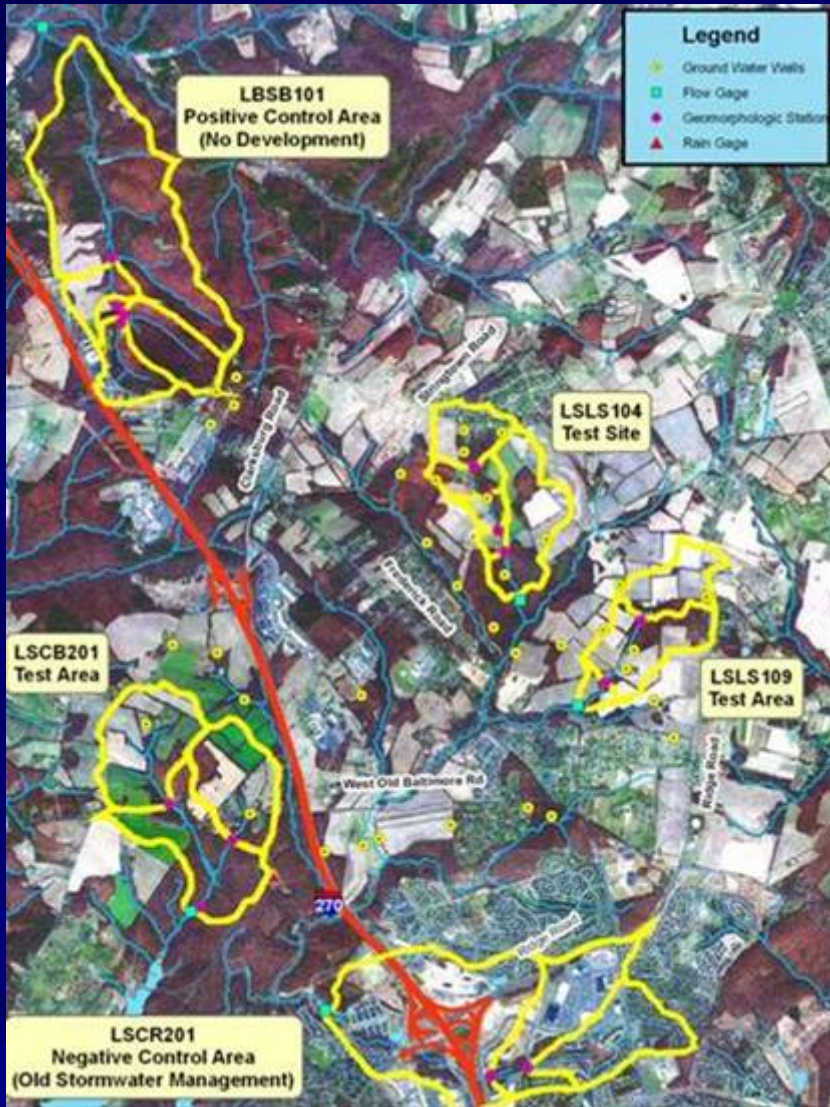
- Use of spatial analytical methods to understand the relationship between the built environment and the natural environment over time
- Provide data for informed decision-making on future development and/or technical designs or solutions

Impervious Effects

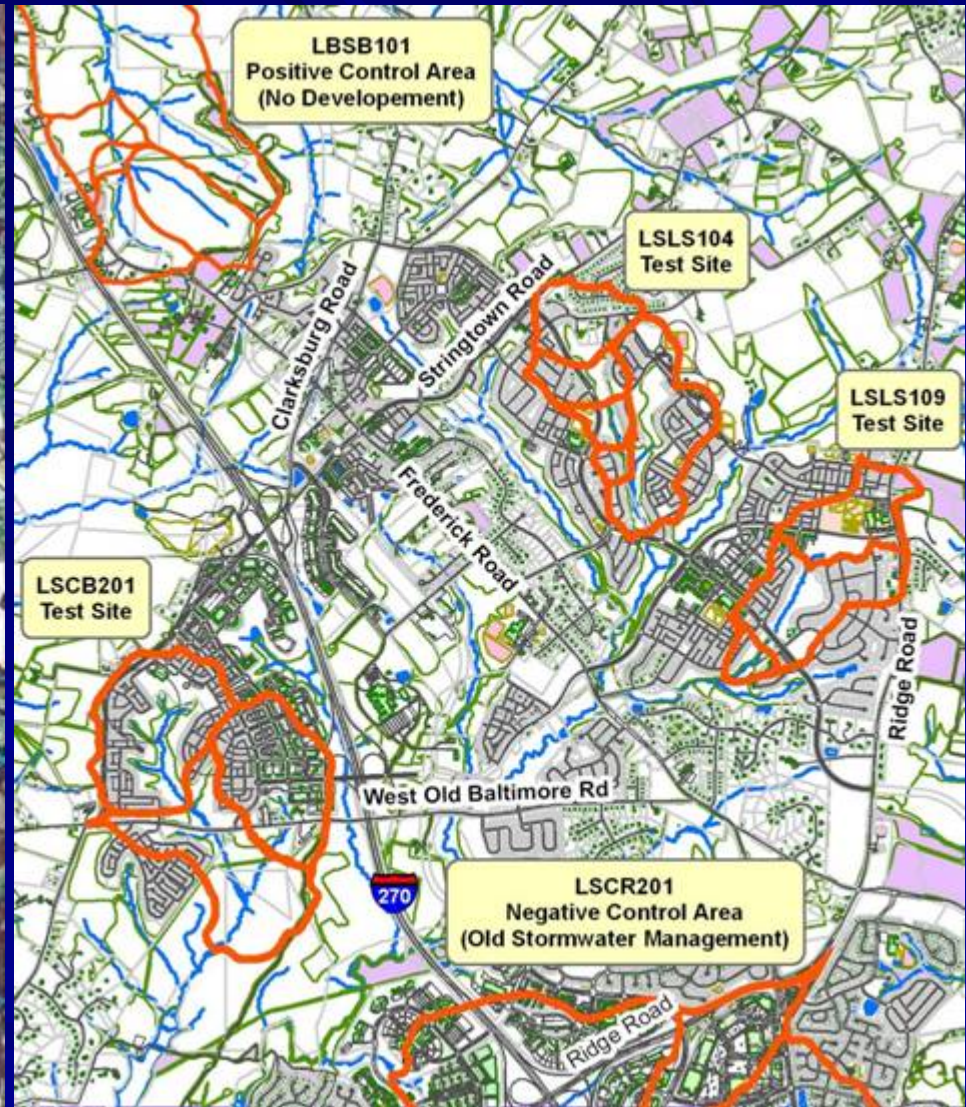


Prepared by ERM, Inc. for MNCPPC-Montgomery County (May, 2000)

Impervious in Test Areas



Land cover in 2002



Proposed Development

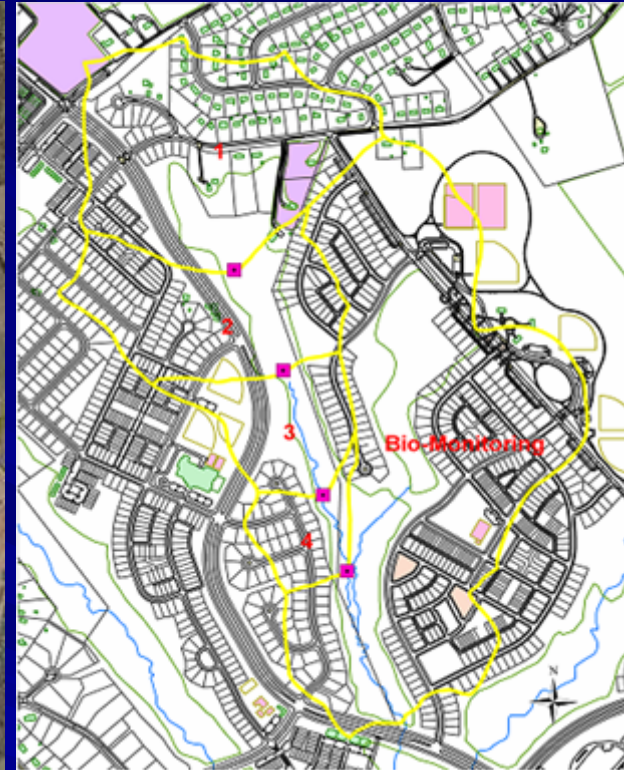
LSLS104 Test Area



Land cover in 2002



Land cover in 2004



Proposed Development

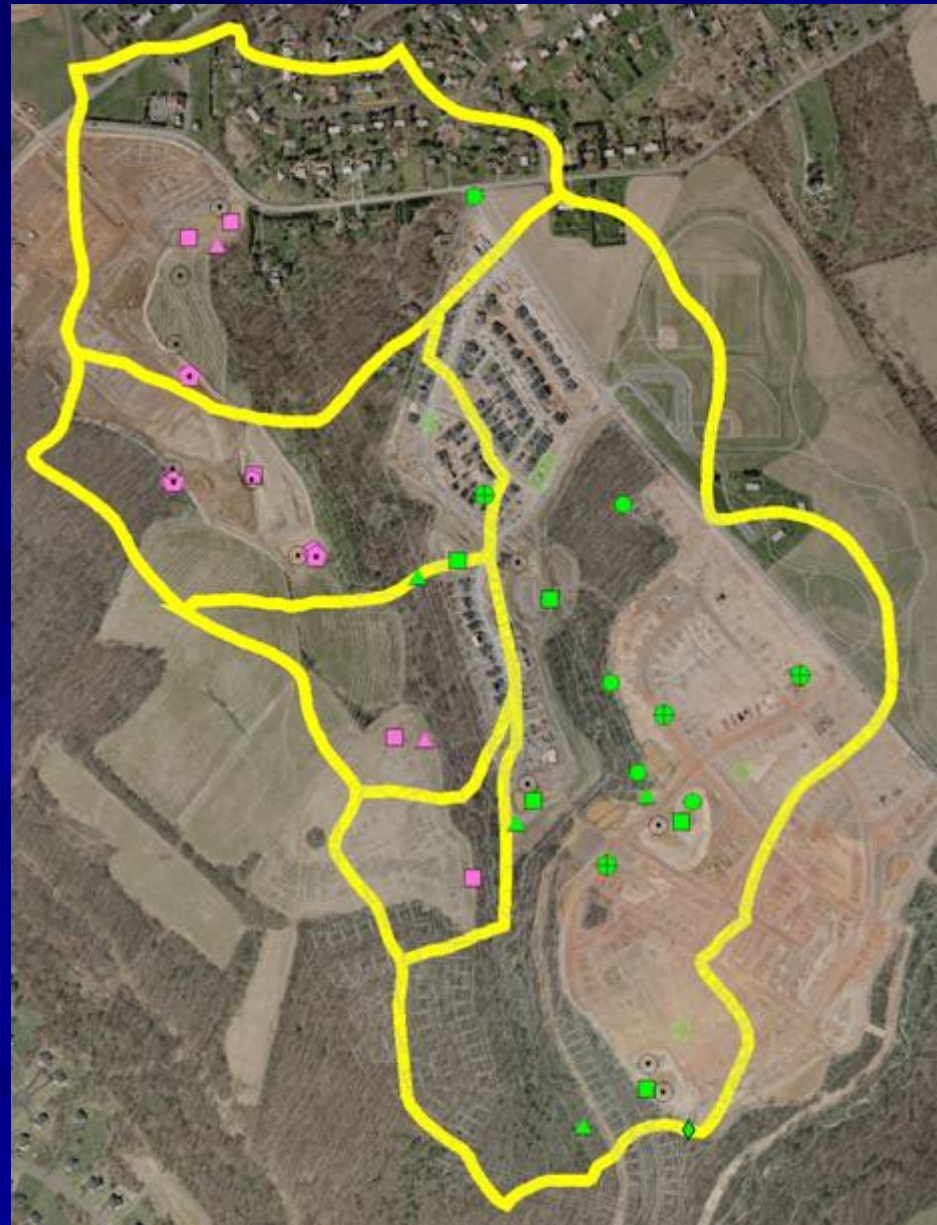
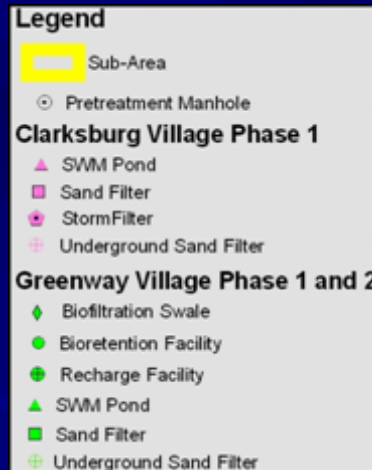
- Flow Gage
- Monitoring Station

Mitigating Impervious Impacts

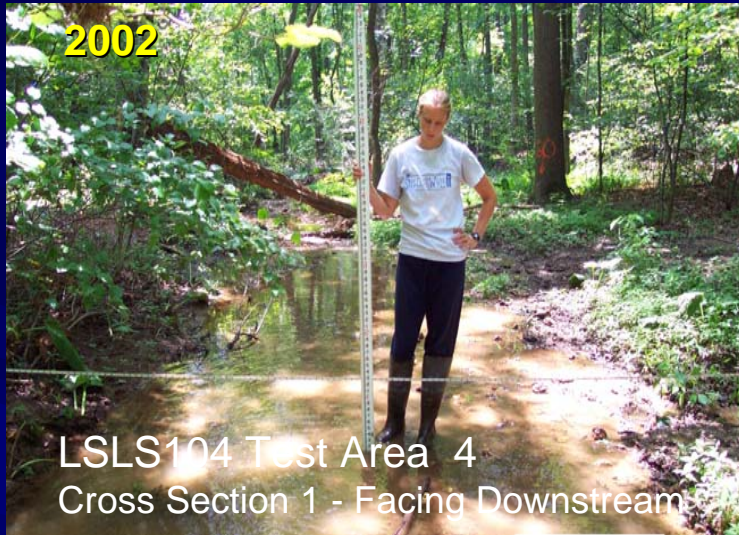
- **Stormwater management practices in combination with comprehensive site planning to provide maximum resource protection**
- **Site layout, including road network, dictates types of stormwater management practices used**
- **Higher levels of imperviousness require more structural runoff controls**
- **Redundant and multiple water quality controls upstream of primary runoff control**

LSLS104

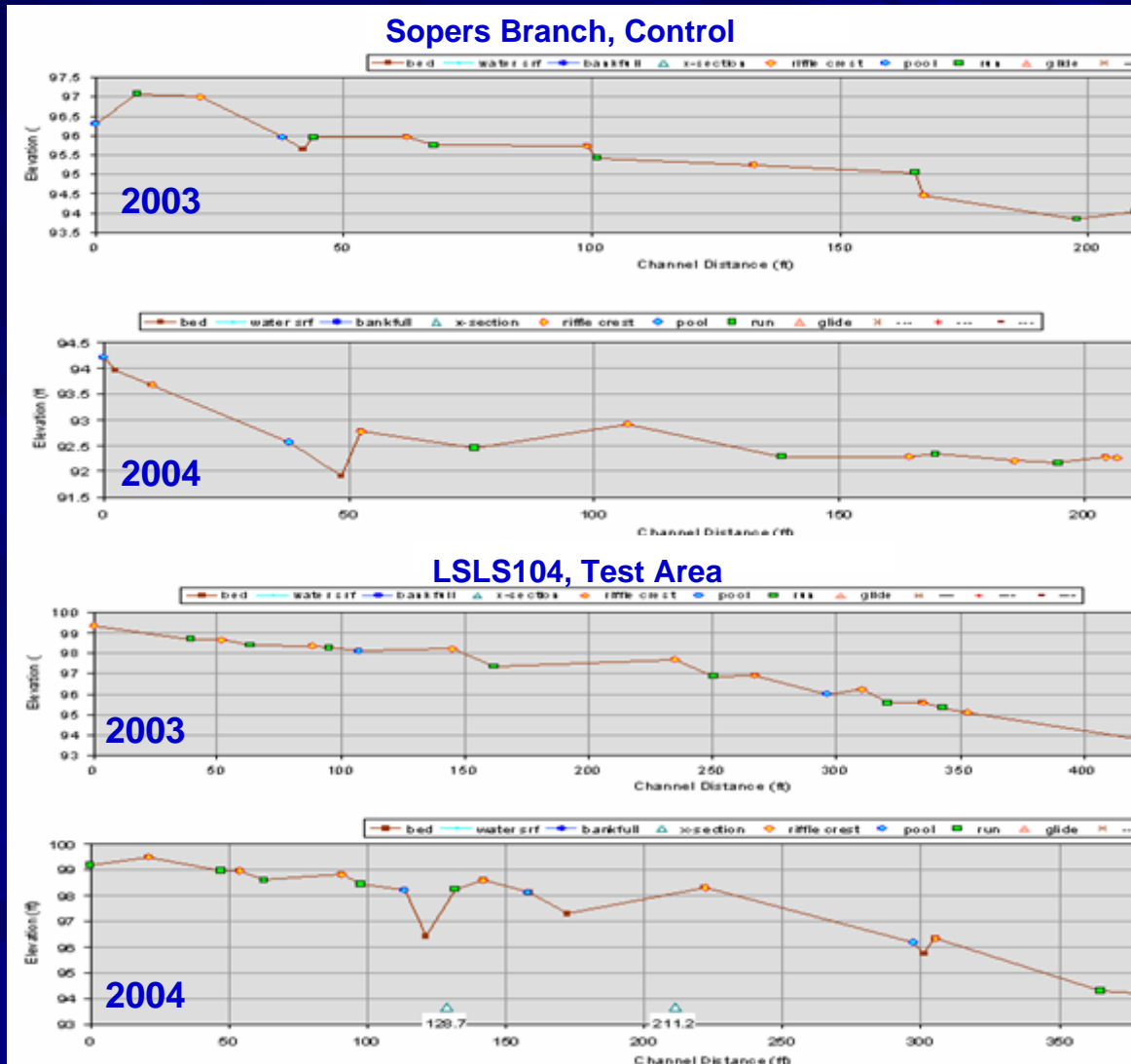
Proposed Stormwater Management Practices



Data: Cross-Sections



Data: Longitudinal Profiles



Acknowledgements

■ DEP Staff

- Cameron Wiegand, Donald Dorsey, Alicia Youmans, Doug Marshall, and Mark Sommerfield

■ DEP Interns

- Michelle Chesnut, proposed BMPs

■ **Richard Gee**, Department of Permitting Services

■ **Maryland National Capital Park and Planning Commission** (aerial photos, development plans)