



***Metropolitan Accessibility and Transportation
Sustainability:
Comparative Indicators for Policy Reform***

University of Michigan

University of Maryland

Promote
Sustainability:
*Meet needs of
present without
compromising
ability of future
generations to
meet their needs*

Reduce
(fulfillment of)
needs

Reduce impact of
need fulfillment

Redefine needs

Redefining needs in Transportation Policy

Traditional Mobility-Based Definition

Mobility

Capacity Expansion

Land-Use Planning

Travel Demand Management

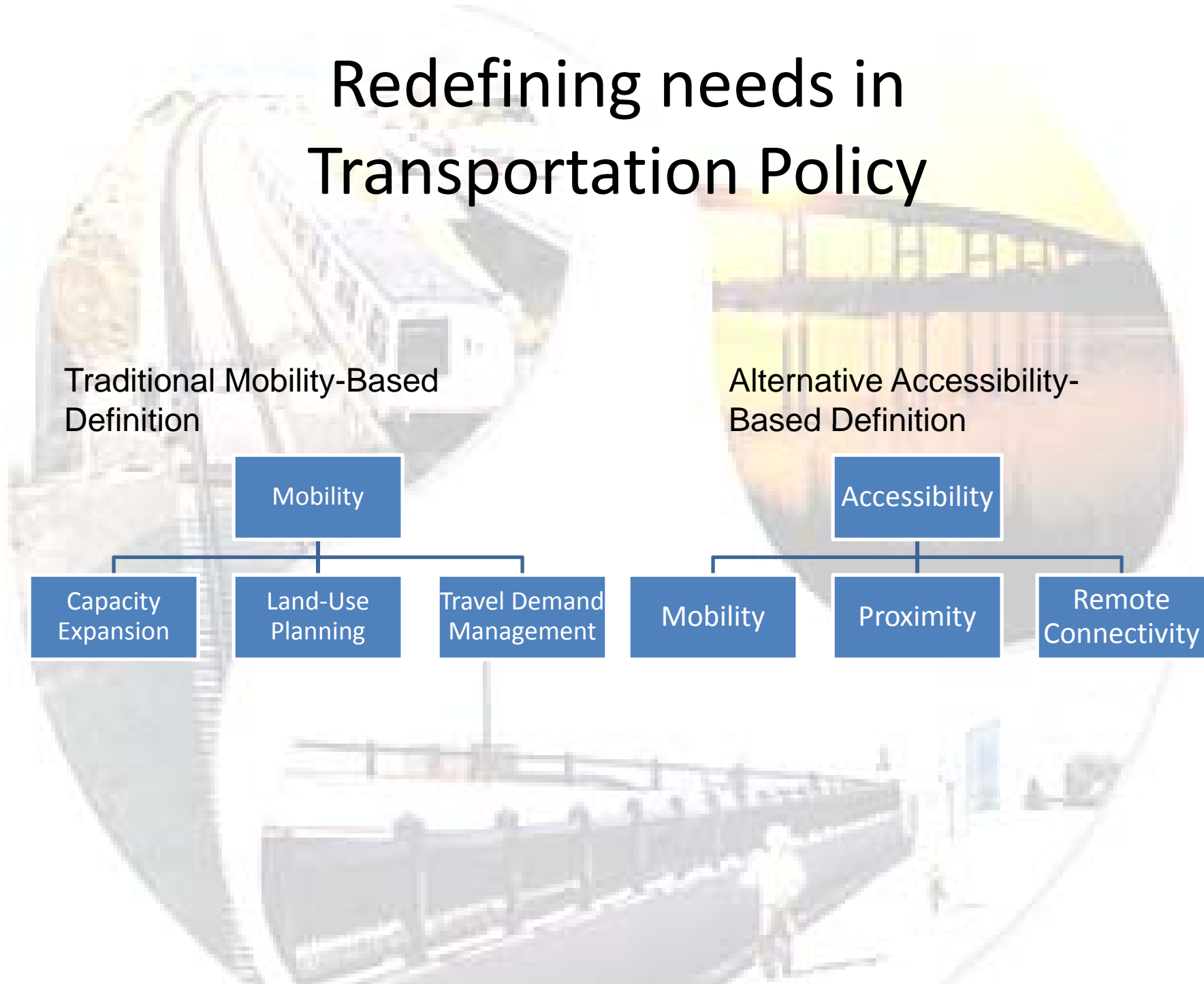
Alternative Accessibility-Based Definition

Accessibility

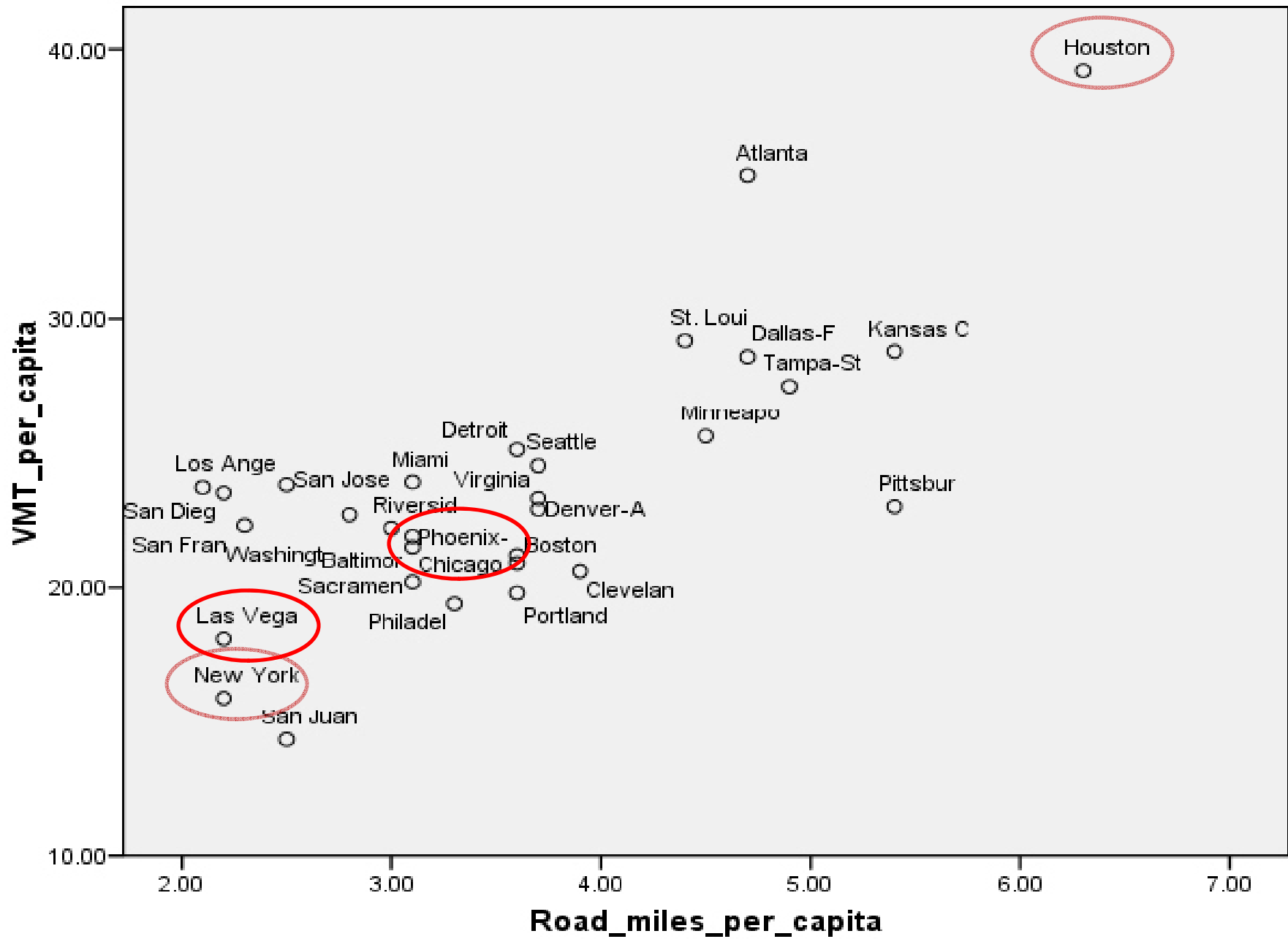
Mobility

Proximity

Remote Connectivity



Eric Britton	Founder and Director, EcoPlan International and The Commons
Mary Crass	Senior Policy Analyst, Urban, Environment, and Accessibility Issues, European Conference of Ministers of Transport (ECMT of the OECD)
Charlotte Kahn	Executive Director, Boston Indicators Project
William Klein	Director of Research, American Planning Association
Xuan Liu	Data Center Director, Southeast Michigan Council of Governments
William Lyons	Senior Project Manager, Volpe National Transportation Systems Center
Alex Marshall	Senior Fellow, Regional Plan Association, New York
Eric Miller	Bahen/Tanenbaum Professor, Department of Civil Engineering, University of Toronto
Harriett Tregoning	Executive Director, Smart Growth Leadership Institute
SMART	Sustainable Mobility and Accessibility Research and Transformation, The University of Michigan

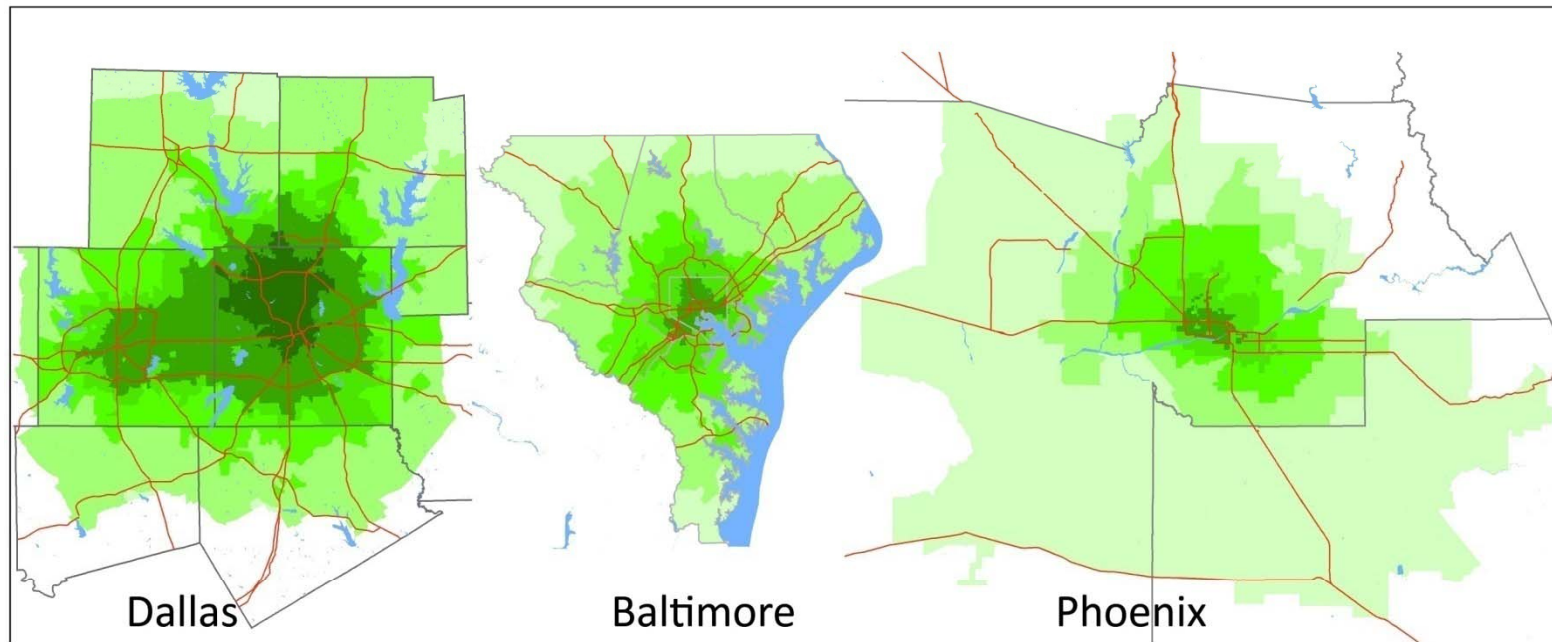


$r^2 = .589$ (quadratic)

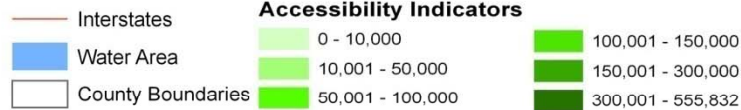
Job Accessibility by Car

Dallas, Baltimore, and Phoenix

Accessibility by Census Block Group (Year 2000)



Legend



0 10 20 40 Miles

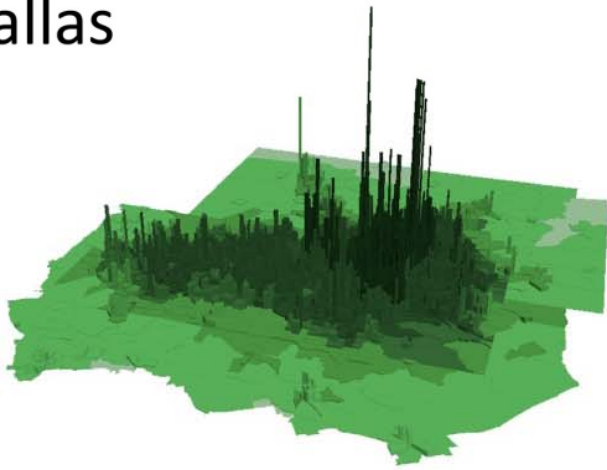


Map Scale: 1:600,000

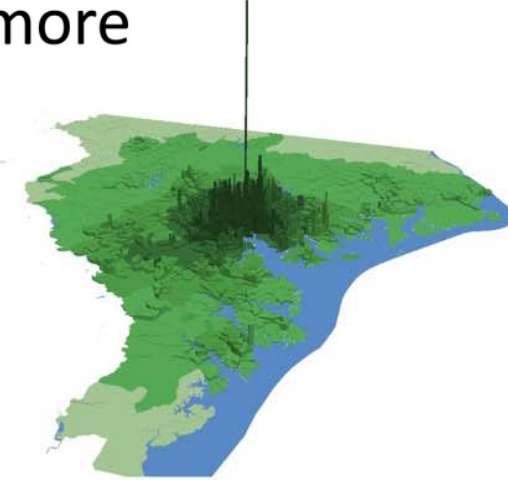


Accessibility and Population Density by Census Block Group (Year 2000)

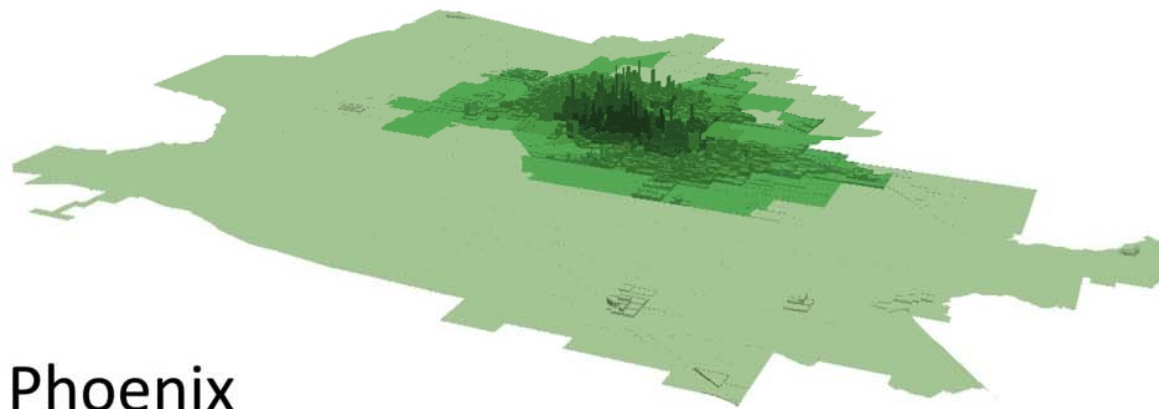
Dallas



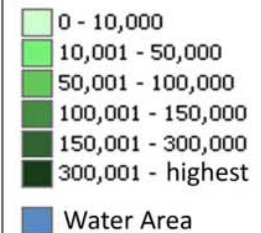
Baltimore



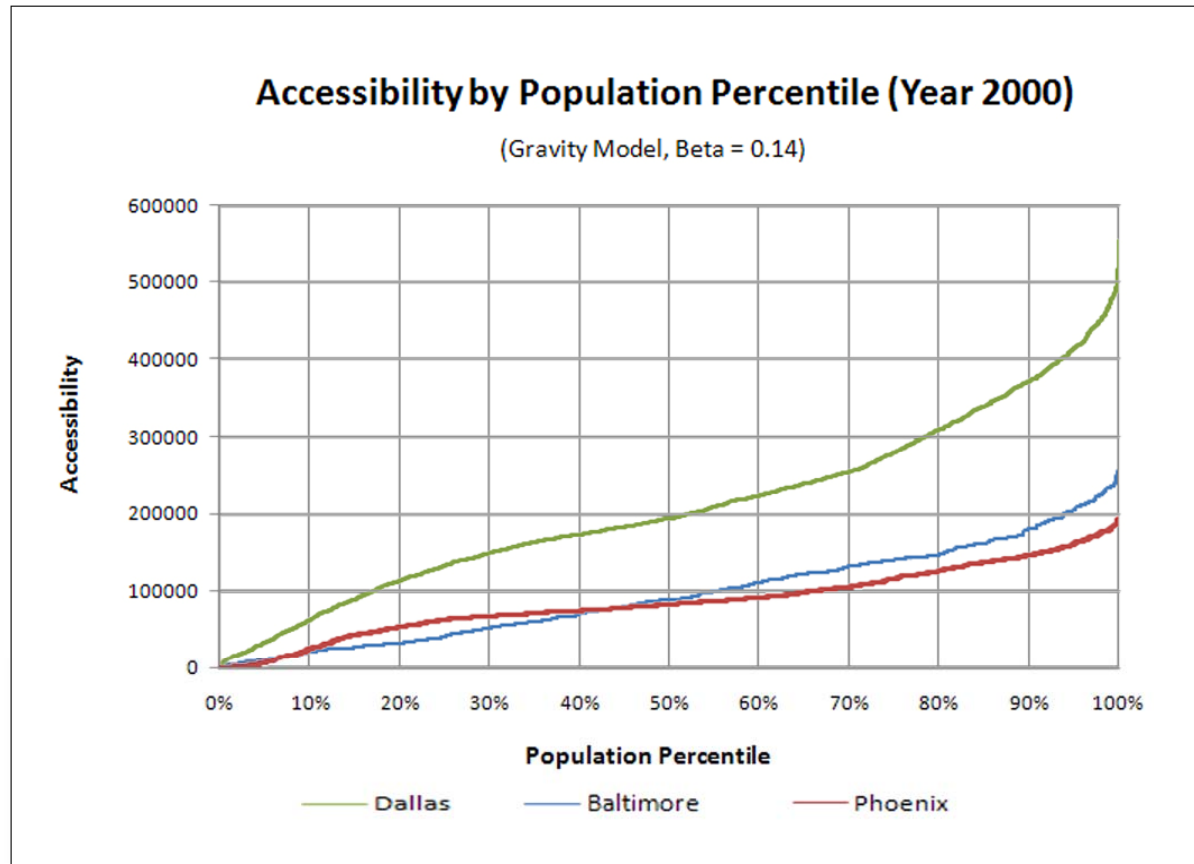
Phoenix



Accessibility
Indicators



Distribution of Job Accessibility by Car, Dallas, Baltimore, and Phoenix



Sustainability/Accessibility
Research

?

Transportation Policy