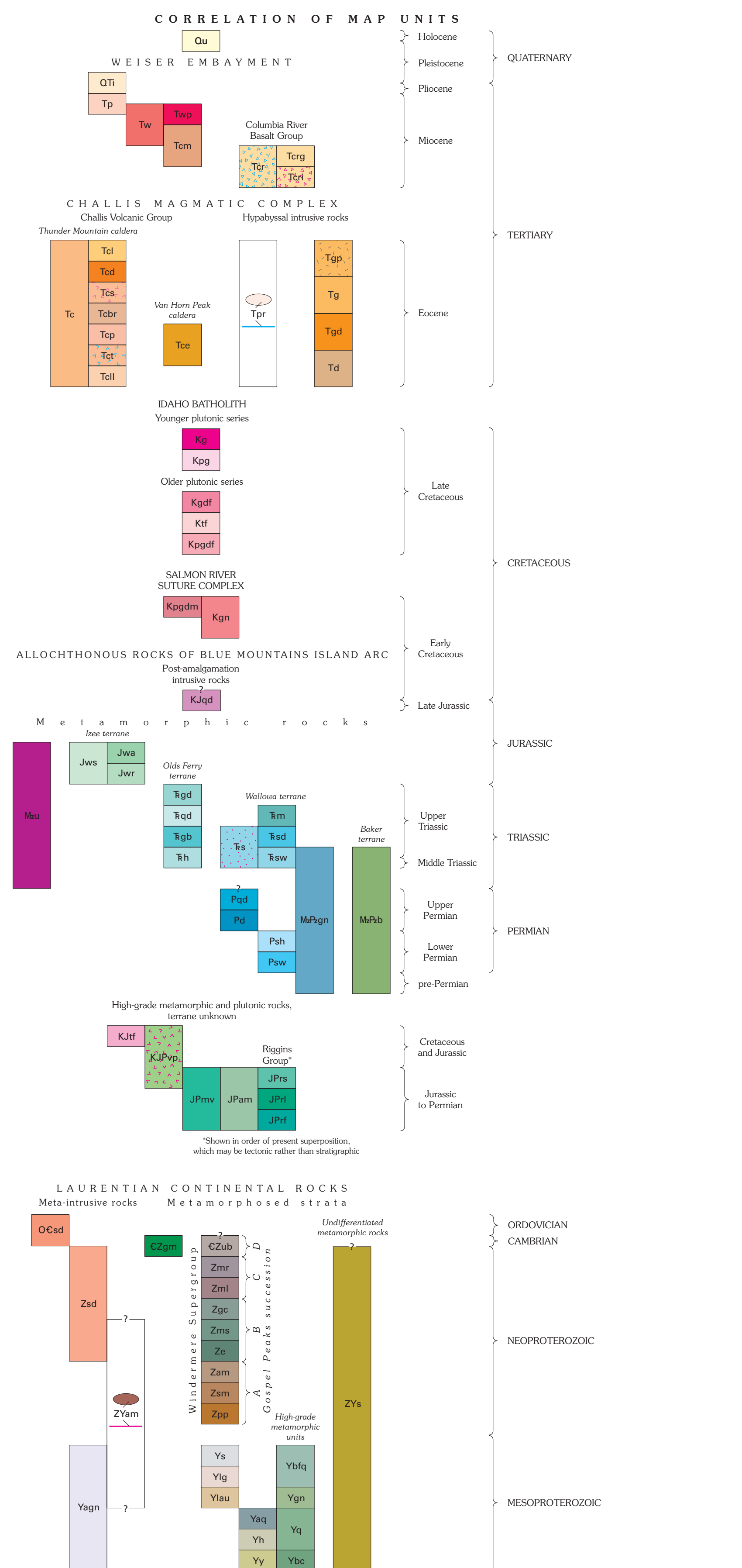
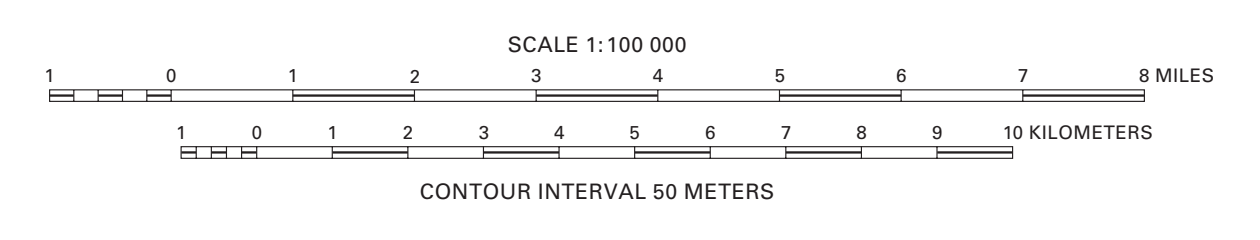
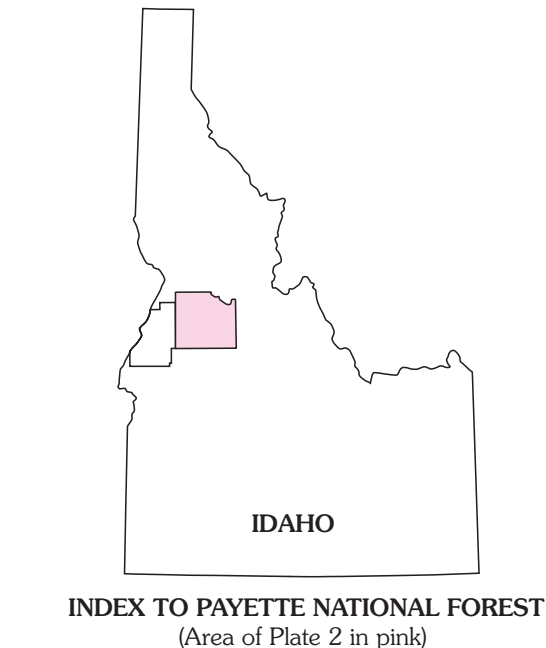
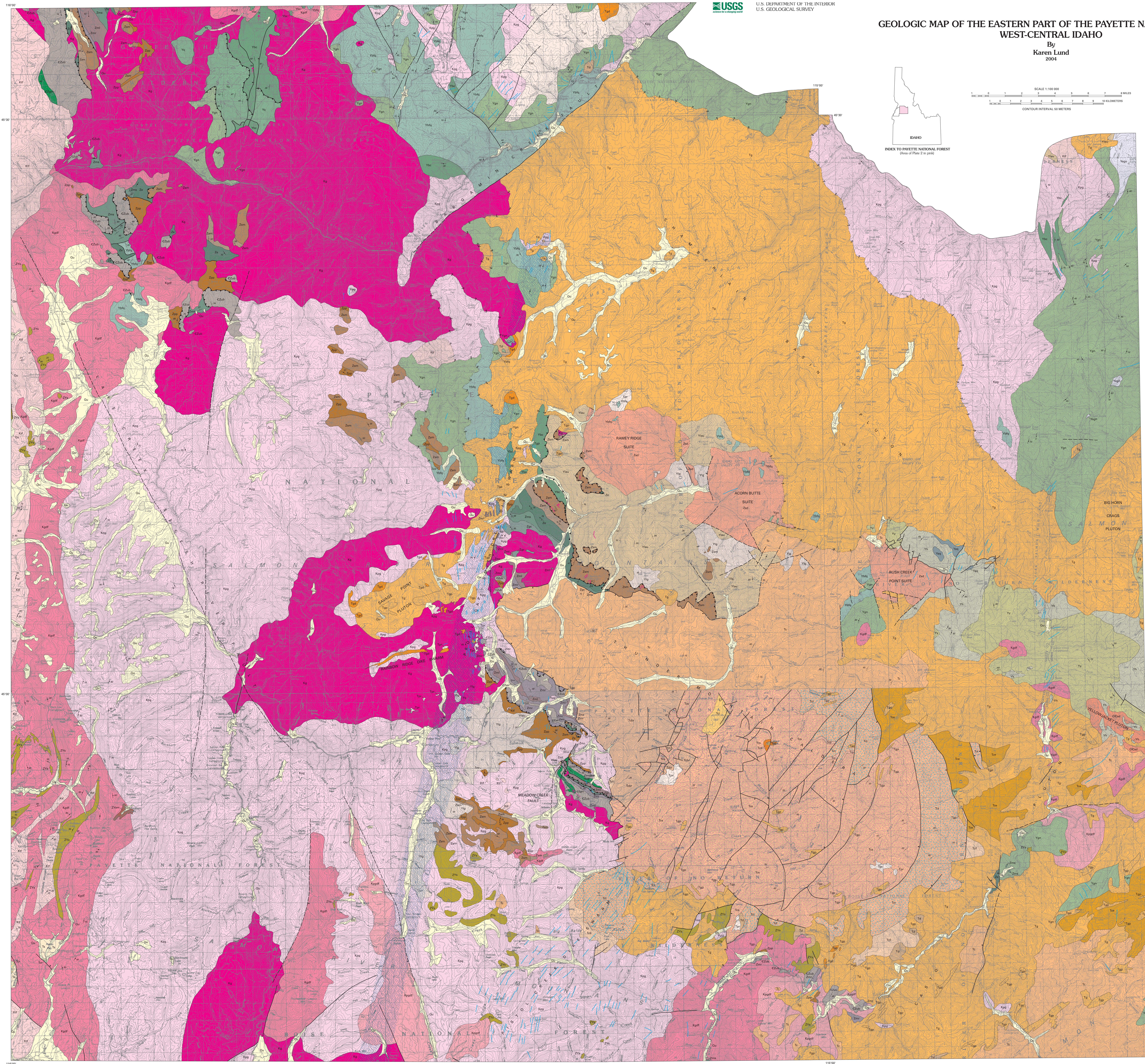


GEOLOGIC MAP OF THE EASTERN PART OF THE PAYETTE NATIONAL FOREST, WEST-CENTRAL IDAHO

By Karen Lund 2004



LIST OF MAP UNITS (Boxes colored only for units shown on this sheet)
- WEISER ENDEMBAYMENT: Quaternary (Qa), Pleistocene (Qp), Holocene (Qh)
- CHALLIS MAGMATIC COMPLEX: Tertiary (Tt, Tm, Tg, Tn, Tq, Tr, Ts, Tz, Tw, Ty, Tz)
- IDAHO BATHOLITH: Cretaceous (Kc, Kd, Ke, Kf, Kg, Kh, Ki, Kj, Kk, Kl, Km, Kn, Ko, Kp, Kq, Kr, Ks, Kt, Ku, Kv, Kw, Kx, Ky, Kz)
- SALMON RIVER SUTURE COMPLEX: Paleozoic (Ss, Sp, Sg, Sh, Si, Sj, Sk, Sl, Sm, Sn, So, Sp, Sq, Sr, Ss, St, Su, Sv, Sw, Sx, Sy, Sz)
- ALLOCHTHONOUS ROCKS OF BLUE MOUNTAINS ISLAND ARC: Paleozoic (Aa, Ab, Ac, Ad, Ae, Af, Ag, Ah, Ai, Aj, Ak, Al, Am, An, Ao, Ap, Aq, Ar, As, At, Au, Av, Aw, Ax, Ay, Az)
- LAURENTIAN CONTINENTAL ROCKS: Paleozoic (Lc, Ld, Le, Lf, Lg, Lh, Li, Lj, Lk, Ll, Lm, Ln, Lo, Lp, Lq, Lr, Ls, Lt, Lu, Lv, Lw, Lx, Ly, Lz)
- METAMORPHIC ROCKS: Paleozoic (M1, M2, M3, M4, M5, M6, M7, M8, M9, M10, M11, M12, M13, M14, M15, M16, M17, M18, M19, M20, M21, M22, M23, M24, M25, M26, M27, M28, M29, M30, M31, M32, M33, M34, M35, M36, M37, M38, M39, M40, M41, M42, M43, M44, M45, M46, M47, M48, M49, M50, M51, M52, M53, M54, M55, M56, M57, M58, M59, M60, M61, M62, M63, M64, M65, M66, M67, M68, M69, M70, M71, M72, M73, M74, M75, M76, M77, M78, M79, M80, M81, M82, M83, M84, M85, M86, M87, M88, M89, M90, M91, M92, M93, M94, M95, M96, M97, M98, M99, M100)

Base from U.S. Geological Survey, Big Horn Crags, Challis, Past Creek, 1982, 24 City, Warren, 1981.
Projection: Universal Transverse Mercator, zone 11, 1983 North American Datum.
See "Index to sources of geologic mapping" (Fig. A2) in Professional Paper 1666 for details on data sources and methods.
This geologic map was prepared by Karen Lund, U.S. Geological Survey, Boise, Idaho, under the supervision of Gregory N. Hanson, U.S. Geological Survey, Boise, Idaho.
Editing and layout design by Alexander J. Donnell, U.S. Geological Survey, Denver, Colorado.
Map design and printing by the U.S. Geological Survey, Denver, Colorado.
Map scale: 1:100,000.
Map projection: Universal Transverse Mercator, zone 11, 1983 North American Datum.
Map date: August 6, 2003.
Map title: GEOLOGIC MAP OF THE EASTERN PART OF THE PAYETTE NATIONAL FOREST, WEST-CENTRAL IDAHO.
Map author: Karen Lund.
Map sponsor: U.S. Geological Survey, Denver, Colorado.
Map number: Professional Paper 1666, Plate 2.
Map status: Final.
Map disclaimer: This map is a geologic map and does not show any other information. It is not intended for navigation or other purposes.
Map copyright: © 2003 U.S. Geological Survey. All rights reserved.
Map reproduction: This map may be reproduced in whole or in part for non-commercial purposes without the express written permission of the U.S. Geological Survey.
Map contact: U.S. Geological Survey, Denver, Colorado 80225.
Map phone: (303) 251-4801.
Map fax: (303) 251-4802.
Map internet: www.usgs.gov.
Map email: karen.lund@usgs.gov.