

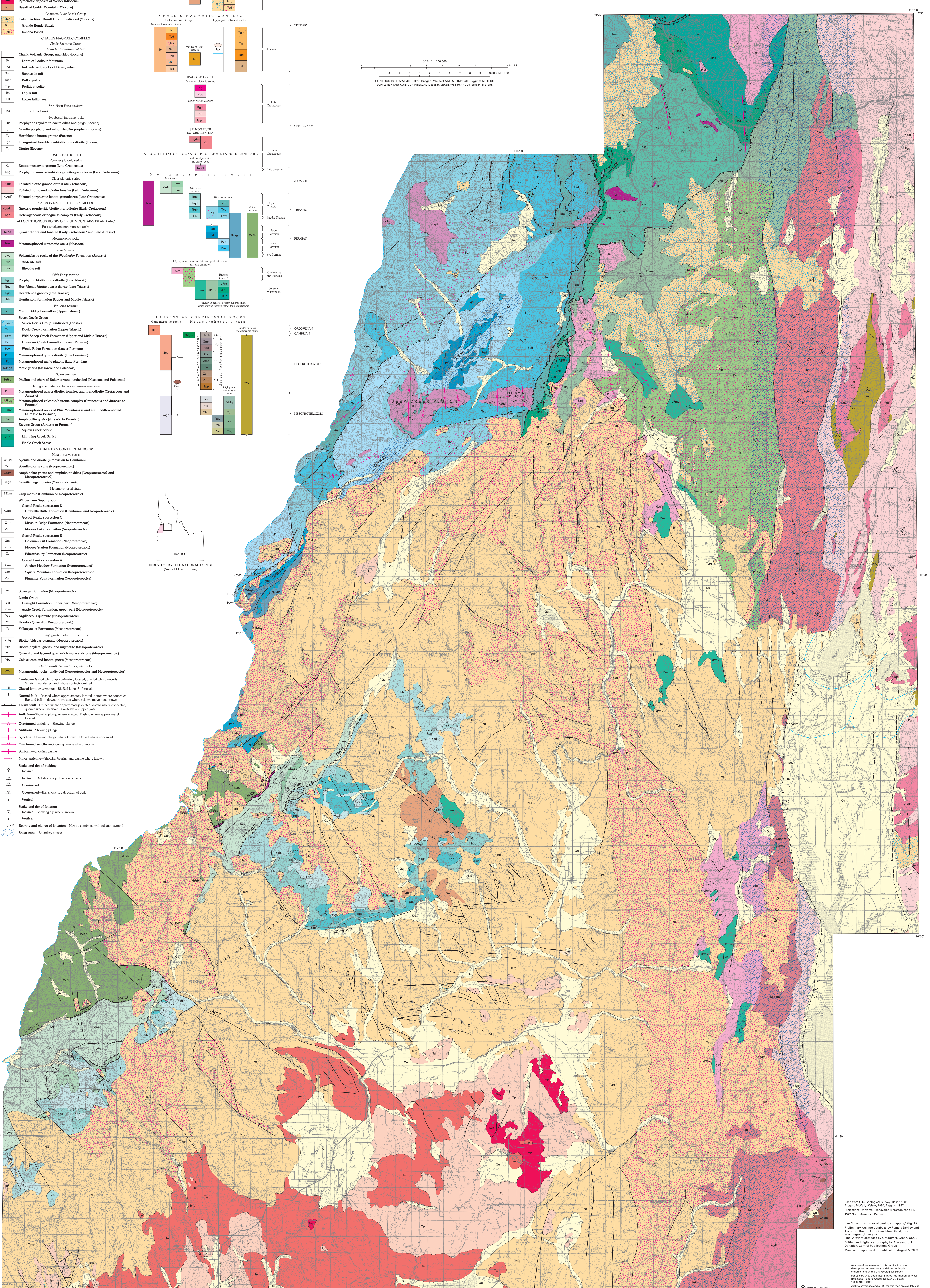
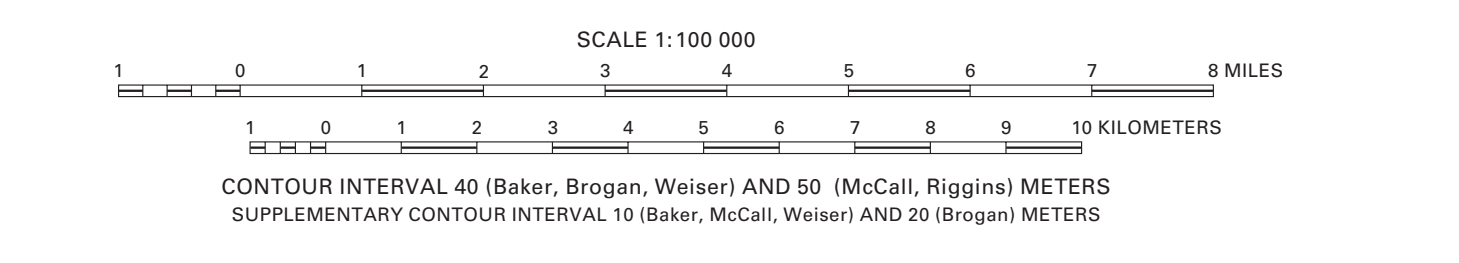
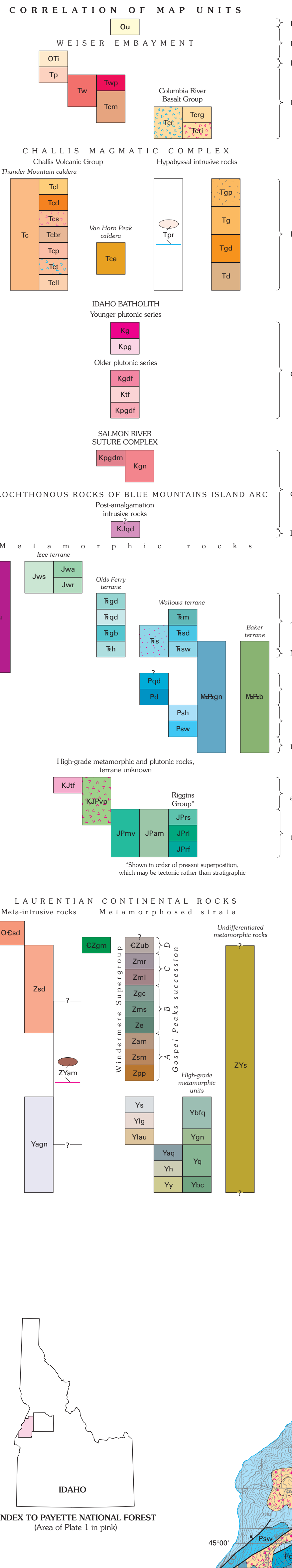
GEOLOGIC MAP OF THE WESTERN PART OF THE PAYETTE NATIONAL FOREST, WEST-CENTRAL IDAHO

By
Karen Lund
2004

LIST OF MAP UNITS

(Boxes colored only for units shown on this sheet)

Qu	Alluvial, lacustrine, and glacial deposits (Quaternary)
W	WEISER EMBAYMENT
QT	Moho Group (Triassic and Permian)
Tp	Payette Formation (Miocene)
Tw	Basalt of Weiser (Miocene)
Tm	Pyroclastic deposits of Weiser (Miocene)
Ts	Basalt of Cuddy Mountain (Miocene)
Tr	Columbia River Basalt Group, undivided (Miocene)
Tg	Columbia River Basalt Group, undivided (Miocene)
Ti	Innaha Basalt
CHALLIS MAGMATIC COMPLEX	
Ch	Challis Volcanic Group
Th	Thunder Mountain volcanics
Thv	Van Horn Peak
Thp	Challis Volcanic Group, undivided (Eocene)
Lm	Lattice of Lookout Mountain
Lm1	Volcaniclastic rocks of Dewey mine
Lm2	Stratified tuff
Lm3	Buff duff
Lm4	Peritic rhyolite
Lm5	Lapilli tuff
Lm6	Lower Latta lava
Lm7	Tuff of Ellis Creek
Tr	Hypobasalt intrative rocks
Trp	Porphyritic rhyolite to diorite dikes and plugs (Eocene)
Trp1	Granite porphyry and minor rhyolite porphyry (Eocene)
Trp2	Hornblende-biotite granite (Eocene)
Trp3	Fine-grained hornblende-biotite granodiorite (Eocene)
Trp4	Diorite (Eocene)
IDAHO BATHOLITH	
Id	Younger plutonic series
Id1	Older plutonic series
Id2	Older plutonic series
Id3	Older plutonic series
Id4	Older plutonic series
Id5	Older plutonic series
Id6	Older plutonic series
Id7	Older plutonic series
Id8	Older plutonic series
Id9	Older plutonic series
Id10	Older plutonic series
Id11	Older plutonic series
Id12	Older plutonic series
Id13	Older plutonic series
Id14	Older plutonic series
Id15	Older plutonic series
Id16	Older plutonic series
Id17	Older plutonic series
Id18	Older plutonic series
Id19	Older plutonic series
Id20	Older plutonic series
Id21	Older plutonic series
Id22	Older plutonic series
Id23	Older plutonic series
Id24	Older plutonic series
Id25	Older plutonic series
Id26	Older plutonic series
Id27	Older plutonic series
Id28	Older plutonic series
Id29	Older plutonic series
Id30	Older plutonic series
Id31	Older plutonic series
Id32	Older plutonic series
Id33	Older plutonic series
Id34	Older plutonic series
Id35	Older plutonic series
Id36	Older plutonic series
Id37	Older plutonic series
Id38	Older plutonic series
Id39	Older plutonic series
Id40	Older plutonic series
Id41	Older plutonic series
Id42	Older plutonic series
Id43	Older plutonic series
Id44	Older plutonic series
Id45	Older plutonic series
Id46	Older plutonic series
Id47	Older plutonic series
Id48	Older plutonic series
Id49	Older plutonic series
Id50	Older plutonic series
Id51	Older plutonic series
Id52	Older plutonic series
Id53	Older plutonic series
Id54	Older plutonic series
Id55	Older plutonic series
Id56	Older plutonic series
Id57	Older plutonic series
Id58	Older plutonic series
Id59	Older plutonic series
Id60	Older plutonic series
Id61	Older plutonic series
Id62	Older plutonic series
Id63	Older plutonic series
Id64	Older plutonic series
Id65	Older plutonic series
Id66	Older plutonic series
Id67	Older plutonic series
Id68	Older plutonic series
Id69	Older plutonic series
Id70	Older plutonic series
Id71	Older plutonic series
Id72	Older plutonic series
Id73	Older plutonic series
Id74	Older plutonic series
Id75	Older plutonic series
Id76	Older plutonic series
Id77	Older plutonic series
Id78	Older plutonic series
Id79	Older plutonic series
Id80	Older plutonic series
Id81	Older plutonic series
Id82	Older plutonic series
Id83	Older plutonic series
Id84	Older plutonic series
Id85	Older plutonic series
Id86	Older plutonic series
Id87	Older plutonic series
Id88	Older plutonic series
Id89	Older plutonic series
Id90	Older plutonic series
Id91	Older plutonic series
Id92	Older plutonic series
Id93	Older plutonic series
Id94	Older plutonic series
Id95	Older plutonic series
Id96	Older plutonic series
Id97	Older plutonic series
Id98	Older plutonic series
Id99	Older plutonic series
Id100	Older plutonic series



Based on U.S. Geological Survey, Baker, 1981; Bigham, McCall, Weaver, 1980; Roggens, 1987; and unpublished data by the U.S. Geological Survey. Final geologic map by Karen Lund, U.S. Geological Survey, 2004. Original map by Gregory N. Green, U.S. Geological Survey, 2003. All rights reserved. Manuscript approved for publication August 5, 2003.

Any use of trade names in this publication is for descriptive purposes only and does not imply endorsement by the U.S. Geological Survey. For more information on the U.S. Geological Survey, please visit our website at www.usgs.gov.

U.S. Geological Survey
1888 ADA USGS
A digital version of this map is available at <http://pubs.usgs.gov>