

# FLEET ASSET SERVICES



KNOWLEDGE THAT EQUALS  
POWER & PERFORMANCE

FLEET MANAGEMENT & VEHICULAR COMPONENTS



## FLEET ASSET SERVICES

Vehicle Management Information System (VMIS), a comprehensive web-based solution to streamline operations, improve vehicle utilization and lifecycle as well as provide significant return on your investment through parts inventory management, increased labor productivity, more efficient fuel management, effective tracking of vehicle warranty claims and improved regulatory compliance.

VMIS combines comprehensive functionality with fully Web-architected technology, providing real-time access to information, seamless integration in your organization's legacy applications and true database integrity.

- Versatile and Scalable
- Streamline Operations
- Ease of Administration
- Improve Vehicle Utilization
- Easy-to-Use Management Reporting
- Powerful Query Capabilities
- State-of-the-Art Data Validation
- Customized to Fit Your Needs
- Secure Platform

Through the use of **Fleet Asset Services and VMIS**, you acquire the knowledge and the control you need to face the daily challenges of your organization and confidently manage mission critical assets. VMIS meets your Fleet Asset Management needs without the burden of additional expenditures on hardware, software, software maintenance fees and IT resources while providing seamless upgrades, daily backups, secure environment and dedicated IT staff.

**VMIS** can help your organization achieve measurable reductions in maintenance expenditures, improve productivity and increase efficiency.

# RETURN ON INVESTMENT

www.unicor.gov/fleet/roi

## FLEET ASSET SERVICES ROI Calculator

Size of fleet

number of mechanics

% of fleet maintenance internal

internal burden rate

% of fleet maintenance external

external burden rate

average stockroom inventory value

average fuel cost per vehicle

average cost of replacement vehicle

% of vehicles under warranty

Email To:



U.S. Department of Justice  
Federal Prison Industries, Inc.

Increase Labor Productivity

### A. - Internal Labor Productivity

# of mechanics

time sheet preparation

time sheet input

total daily data sheet only

annual hours

[hourly internal labor rate](#)

**Annual Labor Savings**

### B. - Parts Management & Inventory

average stock room value

average monthly parts issue

potential inventory reduction

**Total Potential Inventory Savings**

Effective Vehicle Warranty Tracking

### C. - Warranty Recovery

**C1 - new vehicle warranties (bumper to bumper)**

% of new vehicles under warranty

average warranty cost lost

**Annual Potential Savings**

Powerful Vehicle Replacement Management

### C2 - replacement part warranties

vehicle annual cost of parts issues

# of vehicles

total annual parts cost

% per warranty failure

**Total Potential Savings From Replacement Parts**

More Efficient Fuel Management

### D. External Commercial Maintenance

[% of external fleet maintenance](#)

# of people performing collateral duties

% of work week

[admin labor cost](#)

**Total Potential Savings**

### E. Fuel reduction

# of vehicles

average fuel cost per vehicle

[average savings](#)

**Total Fuel Reduction**

Improve Vehicle Utilization

### F. Vehicle Replacement

average cost of replacement vehicle

[improved utilization and extended operating life](#)

**Total Potential Reduction**

Total recurring annual savings	\$ <input type="text"/>
Total one time savings	\$ <input type="text"/>
Annual labor savings	\$ <input type="text"/>
Total potential 1st year ROI	\$ <input type="text"/>
Subsequent year's potential ROI	\$ <input type="text"/>

Powerful features enable you to manage an unlimited number of vehicles.

# VMIS

# S

## VEHICLE MANAGEMENT INFORMATION SYSTEM

### ASSET MANAGEMENT

Flexible and comprehensive reporting and seamless tracking tools allow you to obtain critical fleet information including historical usage, performance and repair history, accounting information, fuel and lubricant usage, unit downtime and multiple warranties.

### LICENSE AND PERMIT TRACKING

Flexible and comprehensive reporting and seamless tracking tools allow you to obtain critical fleet information including historical usage, performance and repair history, accounting information, fuel and lubricant usage, unit downtime and multiple warranties.

### FLEXIBLE REPORTING & POWERFUL QUERY CAPABILITIES

VMIS makes reporting easy with standardized reports as well as the ability to customize your reporting. View reports online, print or distribute via email. Batch run reporting can be scheduled without disrupting user sessions and reports can be exported to Word, Excel or web pages.

Real-time query capabilities empower you to capture information on just about any information, like work orders, parts changes, vehicle inventory and labor usage.

### CAPITAL COST MANAGEMENT & REPORTING

Effectively capture and analyze capital costs associated with your vehicles; including purchase amounts, change orders, "prep" work, accessories and modifications. Reporting features include monthly capital cost charge-backs and disposal reconciliation reporting. In addition, track GASB and GAAP-compliant depreciation and generate reports.

### EQUIPMENT ACQUISITION AND DISPOSAL

Manage the procurement process with this proactive solution that gives you the capabilities to create budgets for new unit acquisition, create purchase order and contract data, monitor delivery schedules and record final sale of proceeds.

### PREVENTATIVE MAINTENANCE FORECASTING

Create unlimited hierarchies of PM jobs for any class of vehicle. Automatically calculate PM due dates, schedule PMs, forecast mileage, elapsed time and fuel consumption.

### PARTS MANAGEMENT & INVENTORY CONTROL

Have extensive knowledge of your parts inventory to maintain the right level of inventory to manage your fleet and meet the maintenance demand. Improve efficiency and accountability with inventory tracking of stock levels/transfers for just in time delivery and establish Economic Order Quantities to reduce stock levels. Prepare purchase orders for in stock and non-stock items and track cross-referenced parts for equivalents.



#### FULLY INTEGRATED FUEL MANAGEMENT

Reduce your fuel expenditures with a system that tracks fuel/fluid ordering and receiving, tank balance reconciliation and tank-to-tank product transfers. Robust reporting can track fuel usage by employee and equipment.

#### WARRANTY ADMINISTRATION

A total warranty administration solution, Fleet Assets Services enables users to track equipment warranties by chassis, component and by replacement parts. The system automatically generates warnings to notify the user of warranty conditions and aides in violation prevention.

#### VEHICLE REPLACEMENT MODELING

Prioritize equipment for replacement based on criteria defined by the user, such as age, mileage, vehicle condition, maintenance costs, fuel costs and availability of replacement funds.

#### MOTOR POOL MANAGEMENT

VMIS allows vehicles to be shared between different parts of an organization. Vehicle reservation, log-in, log-out and vehicle usage can be tracked as well as charges to specific departments for usage.

#### WORK ORDER MANAGEMENT

Fleet Asset Services enables you to generate and track “PMs” (preventative maintenance) and “Emergency maintenance”. Work orders can be prepared, tracked, charges applied and finalized all from a single entry point. Equipment availability and downtime status as well as work order history for a vehicle can be obtained.

#### LABOR PRODUCTIVITY

Dramatically improve labor productivity by collecting data in real-time via bar code capture, timecard entry or manual entry from work orders. Clear and concise reporting tools allow you to determine technician performance and safety records, employee certification & licensing, time and attendance.

**VMIS** helps your Fleet stay within “Greening of the Fleet” Legislative Requirements.



## **DATA CONVERSION SUPPORT**

An integral part of our support effort is to aid you in the seamless integration of your legacy applications, databases and existing data quickly, economically, professionally and accurately. Our workforce receives intensive training as well as supervision by data conversion professionals. We will gladly discuss your data entry/conversion needs, we are extremely competitive and will stand behind our work with full guarantees.

## **TECHNICAL SUPPORT**

FPI's Help Desk 877-GOV-FLEET is available to you on an unlimited basis from 7 am to 7 pm (CST), five days a week. Our dedication is to provide you with superior service and support.

Integrated into Fleet Asset Services is a customizable on-line help system that supports site-specific procedures and instructions. Incorporated is support for standard ATA VRMS codes, as well as user-defined code sets. Codes can be added, modified and removed as needed. User specific frame/field access permissions can be assigned.

## **SECURITY**

### **User Level Security**

User level security is based on user name and password which are entered at login.

### **Administrative Security**

Locations (groups), menus, privileges, report groups and printers can be assigned as user specific or role based. User names and permissions are assigned in a database table.

### **Server Operating System and Network Security**

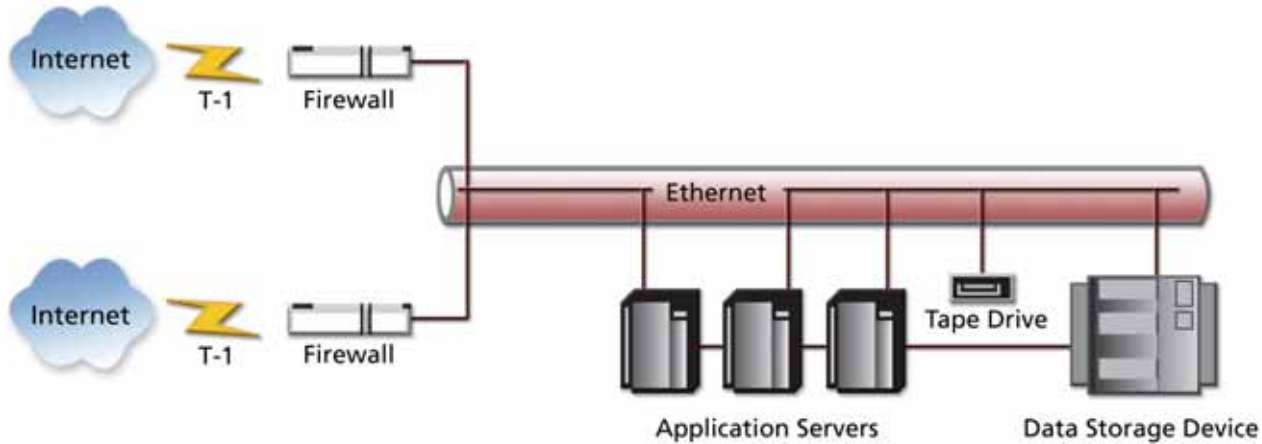
Security, when accessing Vehicle Management Information System (VMIS), is enforced at three levels, Internet/Server Operating System, Application and Database.

The initial security level is controlled through the firewall into the server operating system. The VMIS Application employs Microsoft Windows Server Security features as part of the overall Security Framework. Upon successful firewall passage, the user is typically brought into the application security module with the user-ID passed to VMIS for further application authorization.

### **Database Security**

VMIS utilizes the Oracle and SQL Server Relational Databases. VMIS leverages the security features of each respective database. Database security features employed by VMIS include; database rules, roles and virtual private database functions.

## SCHEMATIC OF ASP NETWORK



### Application Security

Within the VMIS Application, security is enforced at four levels, location, field level, page level and menu level. User access definitions related to each of these levels is defined through the use of security templates. Templates can be defined at a user level or group level.

VMIS provides a Windows File Manager style menu system, where users are presented folders that contain the programs that they are authorized to access. Integrated into the menu component of the system is the capability to define the authorization level of the user by page; granting full, update or read only access. The same authorization levels (full, update, read only) can be applied at the Field Level. When Field level authorizations are invoked they override the page level template parameters. Within each security level the system also provides "privileges" for functions within programs such as canceling records, exceeding work order limits or changing downtime information.

Users are also granted authorization to system processing by location. Users can be granted access to a single location, multiple locations, range of locations or all locations. Users are limited access to only those locations for which they are authorized. Location definitions can be assigned at a group or user level.

**Effectively** track vehicle  
warranty claims with comprehensive  
reporting tools, including FAST.



**U.S. Department of Justice**  
Federal Prison Industries, Inc.

320 First Street N.W., Building 400, Washington, D.C. 20534  
Attention: Director of Business Development  
Fleet Management & Vehicular Components Group  
[www.unicor.gov/fleet](http://www.unicor.gov/fleet)

