



National Parks Quiz

Match the topographic map with the National Park:

- _____ Great Smoky Mountains
- _____ Olympic
- _____ Great Basin
- _____ Colorado
- _____ Badlands
- _____ Mammoth Cave
- _____ Joshua Tree



A

Canyon

Canyon

Columbus

Cold Shivers Point

BM 6106

6425

5600

5700

5700

6200

5300

5800

6100



Piney Mountain

Brushy Mountain

2010 MOUNT LE CONTE

Peregrine Peak

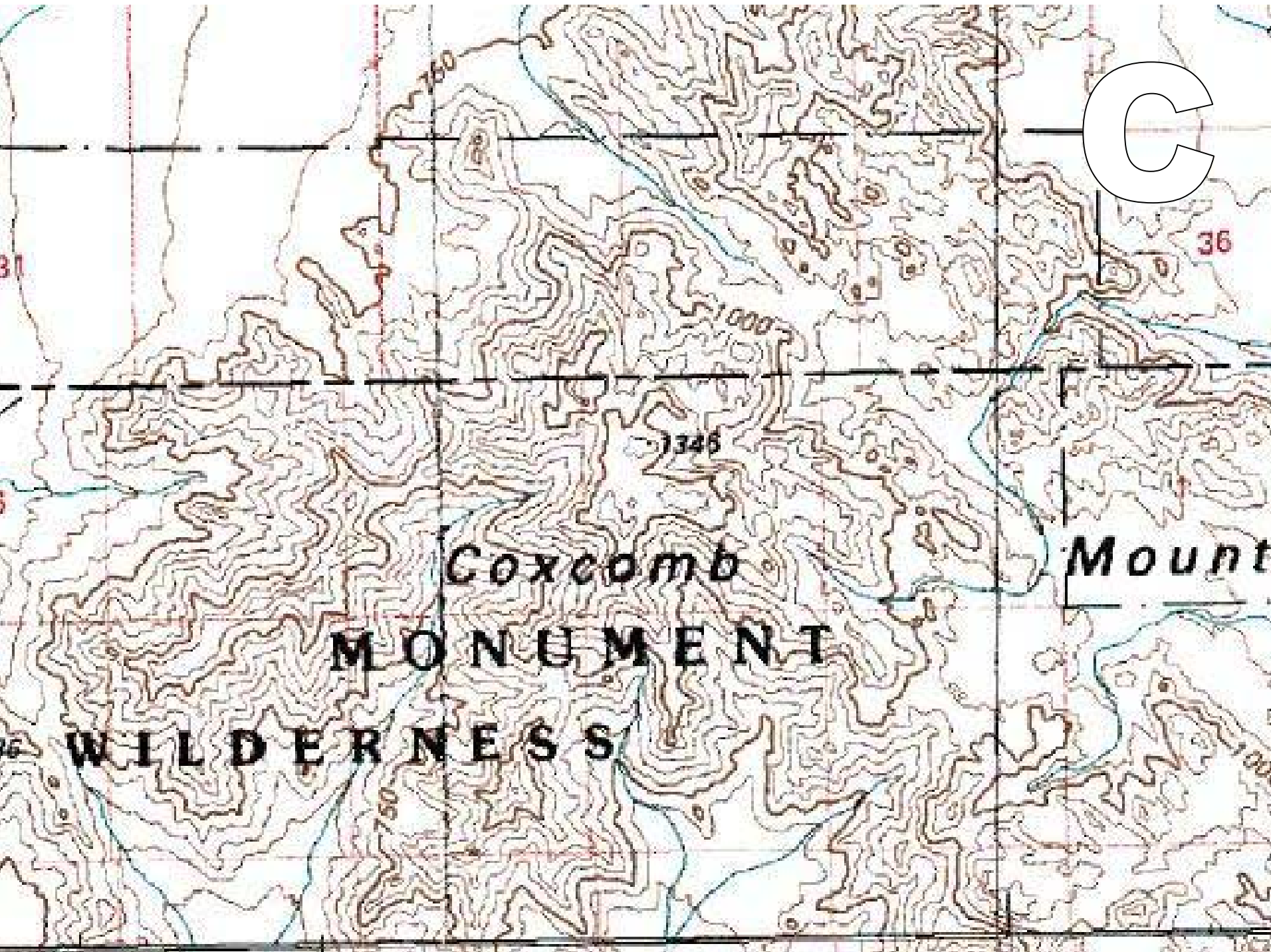
The Boulevard

Fossil Spring

B

141

Mount



C

36

Coxcomb

MONUMENT

WILDERNESS

Mount

1345

1000

750



Wilson

Wilson Cave

Cave

700

Hollow

D

RIVER

800

700

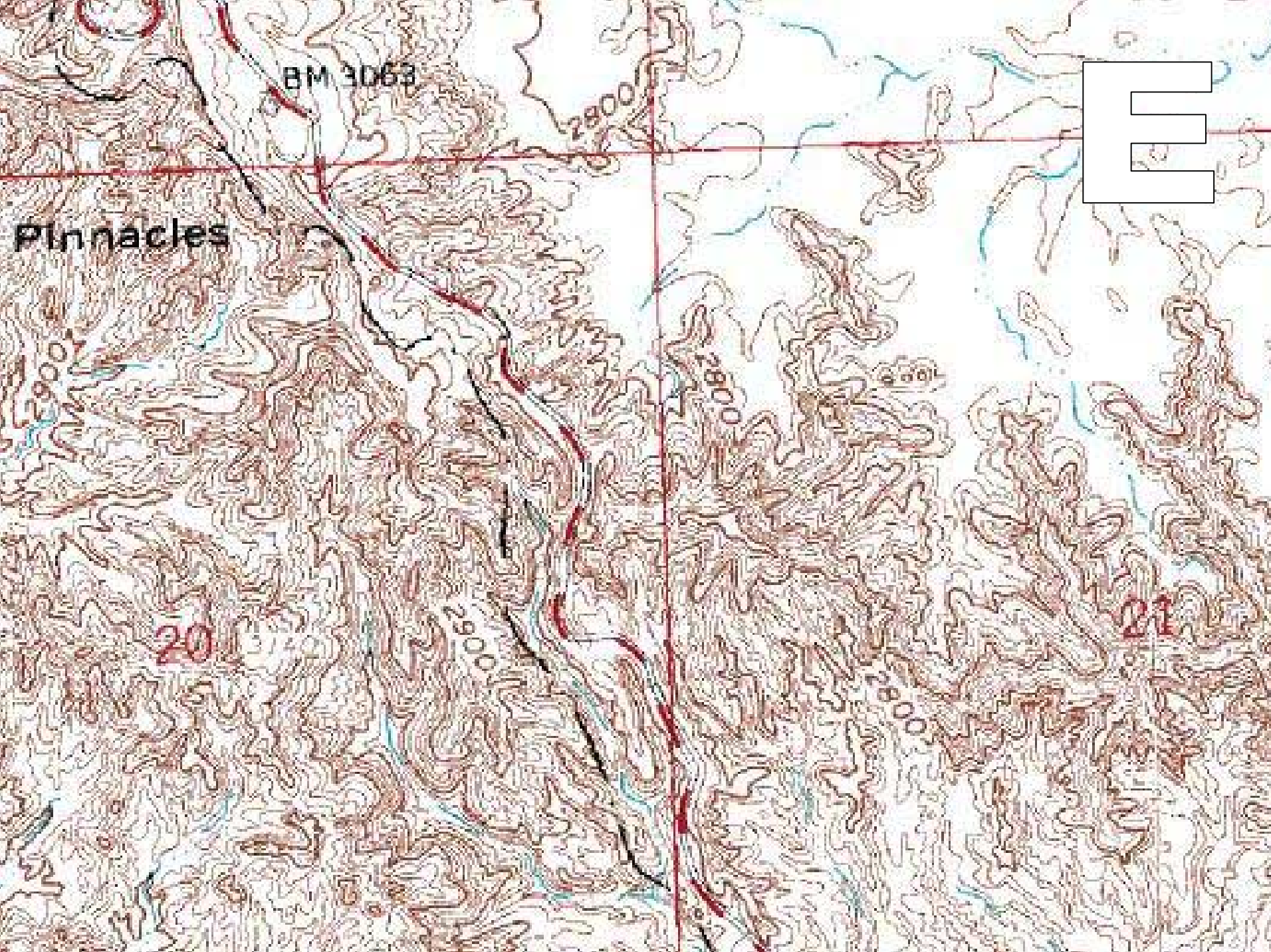
600

x 735

600

740

600



BM 3063

2800

2800

2900

2800

Pinnacles

20

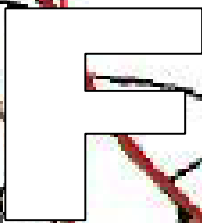
21

E



Kiou's Spr

Landing Field



Landing Field

Canyon

Mahogany Spring

Young

Oldy Spr

Heaven

Horse

Canyon

2000

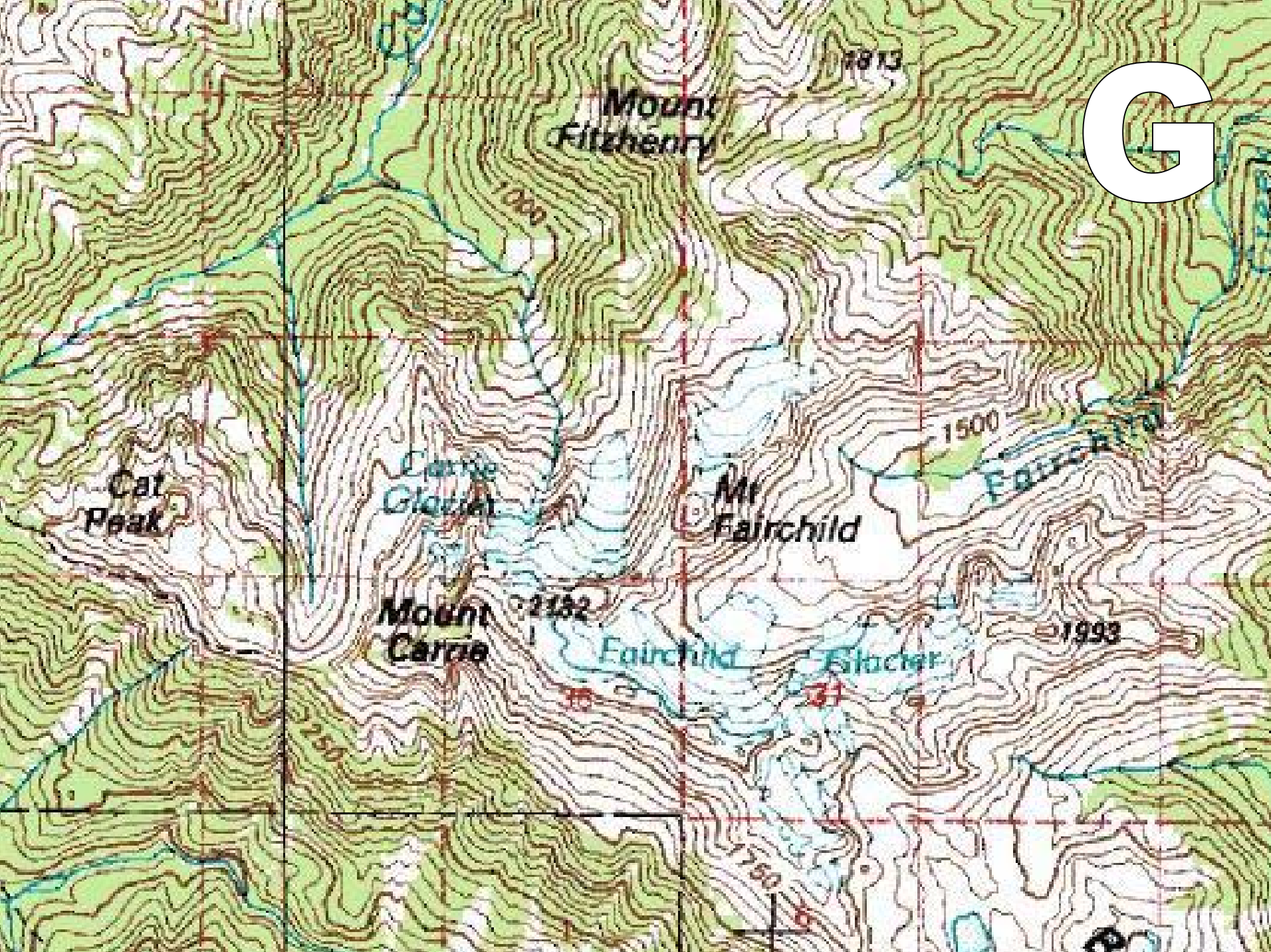
1750

1793

38

81

6



G

Mount
Fitzhenry

7873

Cat
Peak

Carrie
Glacier

Mr
Fairchild

1500

Fairchild
Glacier

Mount
Carrie

2132

Fairchild
Glacier

1993

750

6



National Parks Quiz - Answers

Match the topographic map with the National Park:

___B___

Great Smoky Mountains

___G___

Olympic

___F___

Great Basin

___A___

Colorado

___E___

Badlands

___D___

Mammoth Cave

___C___

Joshua Tree