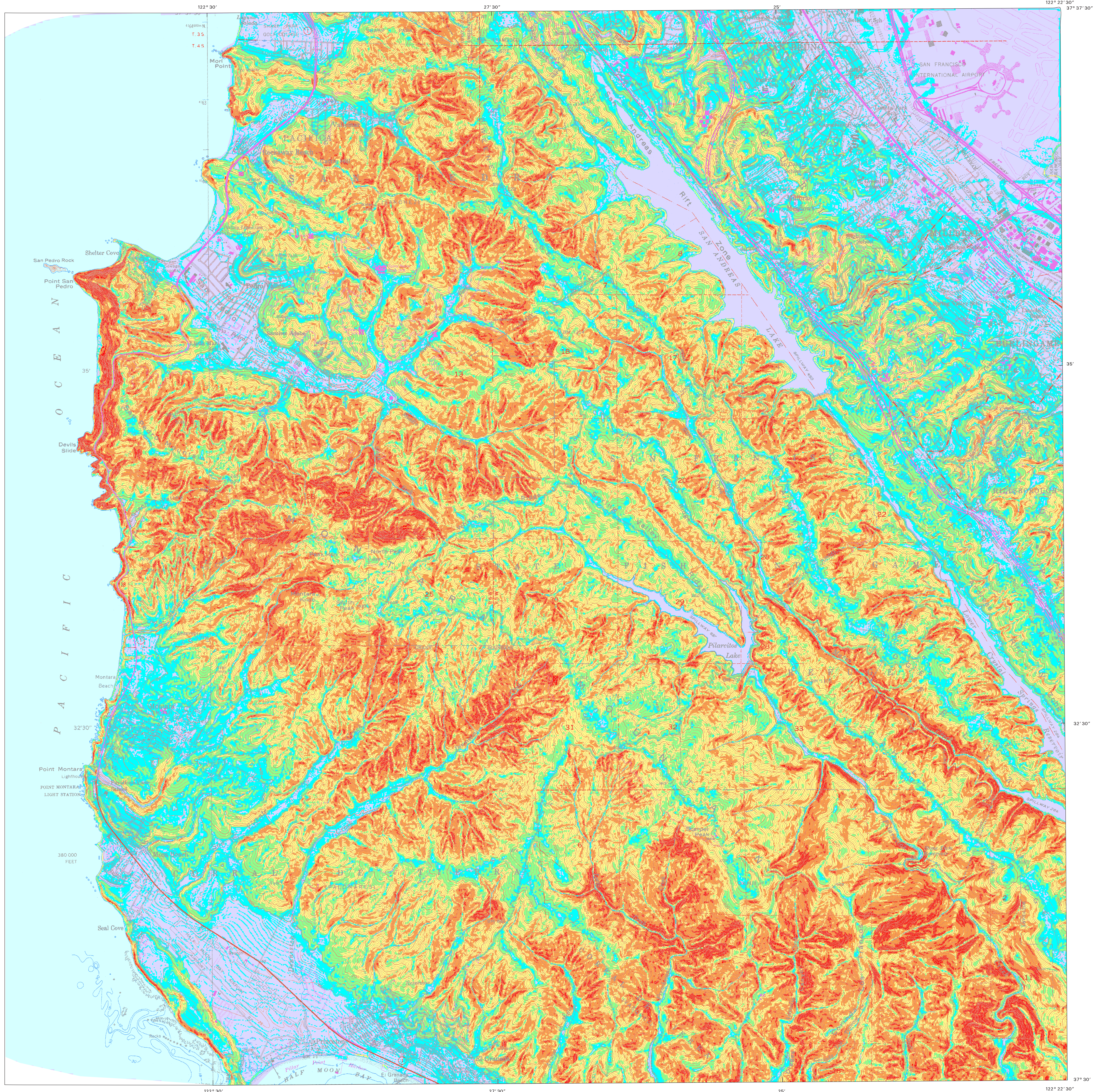


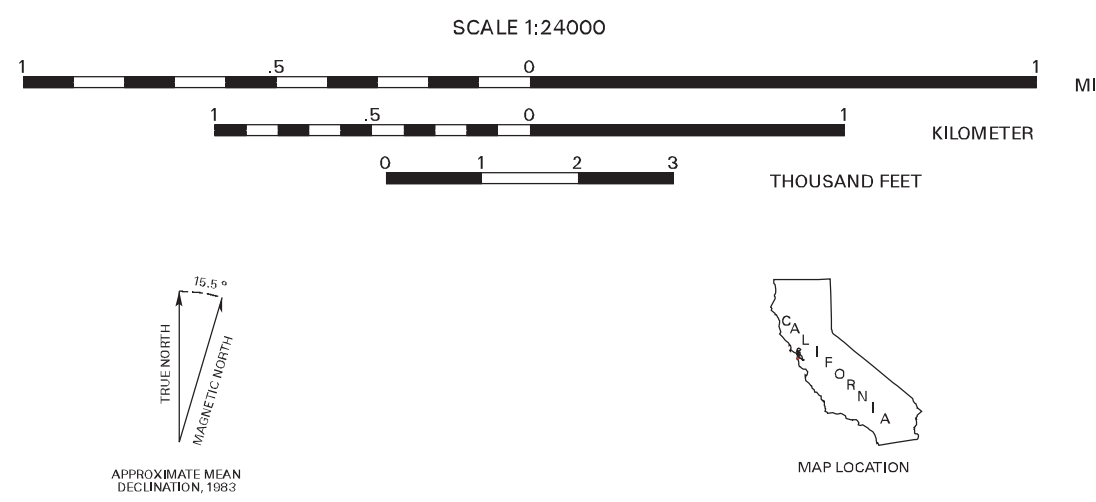
SLOPE MAP FOR MONTARA MOUNTAIN QUADRANGLE, SAN MATEO COUNTY, CALIFORNIA

By Sebastian Roberts and Suzanne K. Mills
 Derived from USGS 10 meter Digital Elevation Model



Slope map derived from 10 meter Digital Elevation Model (DEM), U.S. Geological Survey Reston, Virginia.
 Base from Digital Raster Graphic (DRG) Topographic Base Map, U.S. Geological Survey Reston, Virginia, scale 1:24,000
 Universal Transverse Mercator projection, Zone 10
 This map is a plot derived from data contained in the digital database Open-File Report 00-127, "Possible Costs Associated with Investigating and Mitigating Some Geologic Hazards in Rural Parts of San Mateo County, California." A PostScript image of this map is included in the Open-File Report, but the Open-File Report does not contain a paper copy of this map. The Open-File Report consists of the digital data and a pamphlet explaining the database and indicating how to obtain the data from which this map was prepared as well as the PostScript image of the map.

This report is preliminary and has not been reviewed for conformity with U.S. Geological Survey editorial standards or with the North American Stratigraphic Code. Any use of trade product or firm names is for descriptive purposes only and does not imply endorsement by the U.S. Government.
 This database, identified as "Possible Costs Associated with Investigating and Mitigating Some Geologic Hazards in Rural Parts of San Mateo County, California" has been approved for release and publication by the Director of the USGS. Although this database has been subjected to rigorous review and is substantially complete, the USGS reserves the right to revise the data pursuant to further analysis and review. Furthermore, it is released on condition that neither the USGS nor the United States Government may be held liable for any damages resulting from its authorized or unauthorized use.



EXPLANATION	
Light Blue	0 - 5% slope
Medium Blue	5 - 15% slope
Green	30 - 50% slope
Yellow	50 - 70% slope
Red	Greater than 70% slope

POSSIBLE COSTS ASSOCIATED WITH INVESTIGATING AND MITIGATING SOME GEOLOGIC HAZARDS IN RURAL PARTS OF SAN MATEO COUNTY, CALIFORNIA

By Earl E. Brabb, Sebastian Roberts, William R. Cotton,
 Alan L. Kropp, Robert H. Wright, and Erik N. Zinn
 2000