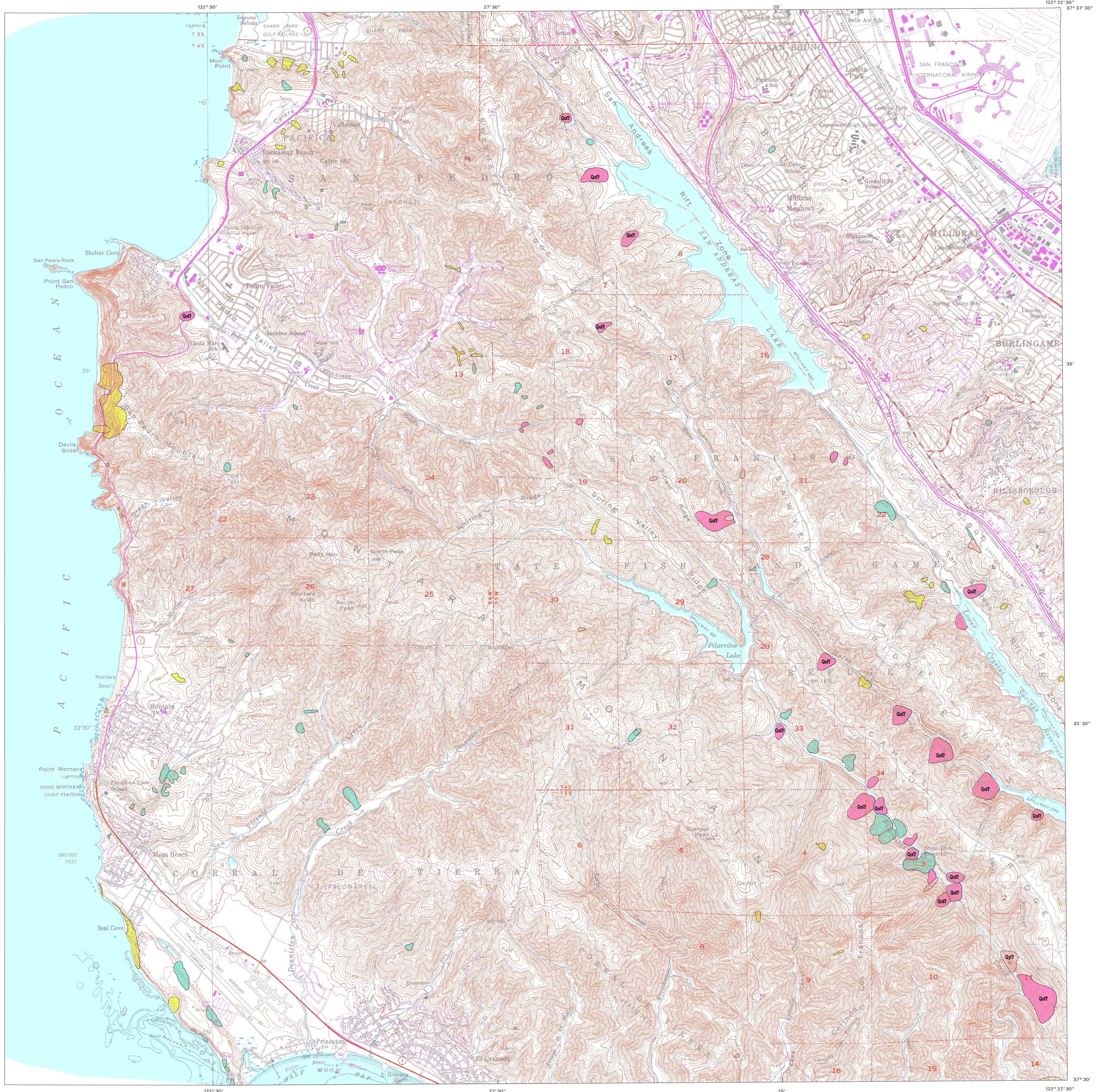


PRELIMINARY INVENTORY OF DEEP-SEATED LANDSLIDES IN THE MONTARA MOUNTAIN QUADRANGLE, SAN MATEO COUNTY, CALIFORNIA

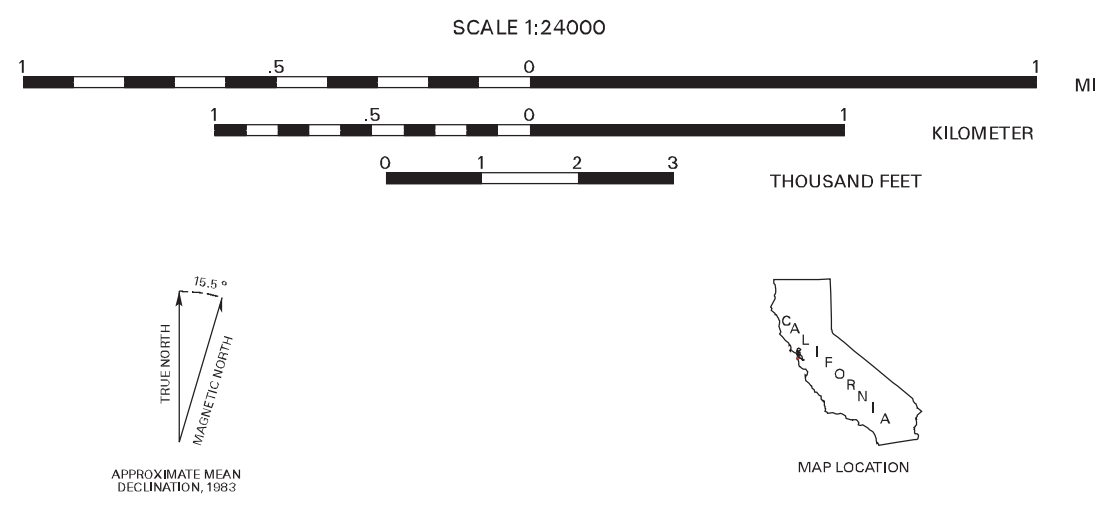
From the map by Earl H. Pampeyan (1994)

Digital database by Sebastian Roberts and Suzanne K. Mills



Map derived from Pampeyan, E.H., 1994
 Geologic Map of the Montara Mountain and
 San Mateo 7 1/2' Quadrangle, San Mateo
 County, California: U.S. Geological
 Survey Miscellaneous Investigation
 Series Map I-2390, scale 1:24,000
 Base from Digital Raster Graphic (DRG)
 Topographic Base Map, U.S. Geological
 Survey Reston, Virginia, scale 1:24,000
 Universal Transverse Mercator projection,
 Zone 10
 This map is a plot derived from data
 contained in the digital database
 Open-File Report 00-127, "Possible Costs
 Associated with Investigating and Mitigating
 Some Geologic Hazards in Rural Parts of San
 Mateo County, California." A PostScript
 image of this map is included in the
 Open-File Report, but the Open-File
 Report does not contain a paper copy of
 this map. The Open-File Report consists of
 the digital data and a pamphlet explaining
 the database and indicating how to obtain
 the data from which this map was prepared
 as well as the PostScript image of the map.

This report is preliminary and has not
 been reviewed for conformity with U.S.
 Geological Survey editorial standards
 or with the North American Stratigraphic
 Code. Any use of trade product or
 firm names is for descriptive purposes
 only and does not imply endorsement by
 the U.S. Government.
 This database, identified as "Possible Costs
 Associated with Investigating and Mitigating
 Some Geologic Hazards in Rural Parts of San
 Mateo County, California" has been approved
 for release and publication by the Director
 of the USGS. Although this database has
 been subjected to rigorous review and is
 substantially complete, the USGS reserves
 the right to revise the data pursuant to
 further analysis and review. Furthermore,
 it is released on condition that neither
 the USGS nor the United States Government
 may be held liable for any damages
 resulting from its authorized or
 unauthorized use.



EXPLANATION	
Qol	Old landslide deposit
Qol?	Questionable old landslide deposit
Qyl	Young landslide deposit
Qyl?	Questionable young landslide deposit
?	Questionable landslide deposit
---	Landslide escarpment

POSSIBLE COSTS ASSOCIATED WITH INVESTIGATING AND MITIGATING SOME GEOLOGIC HAZARDS IN RURAL PARTS OF SAN MATEO COUNTY, CALIFORNIA

By Earl E. Brabb, Sebastian Roberts, William R. Cotton,
 Alan L. Kropp, Robert H. Wright, and Erik N. Zinn
 2000