

Federal Overview of Source Water Protection

Jennifer Parker
Drinking Water Unit
EPA Region 10

What is Source Water?

Untreated water from streams, rivers, lakes, springs, and aquifers that is used as drinking water supply

- Drinking water is vulnerable to contamination
- Source water must be protected
 - To protect human health
 - To avoid high treatment costs








Public Water Systems

- Provide water for human consumption through pipes or other constructed conveyances to at least 15 service connections or serve at least 25 people for 60 days or more a year

Wellhead Protection Program

- Protection of ground water sources
- State programs approved by EPA
- Standard requirements:
 - Determine wellhead protection areas
 - Identify potential contaminant sources within protection areas
 - Plan to protect wellhead areas from contaminants, including contingency planning

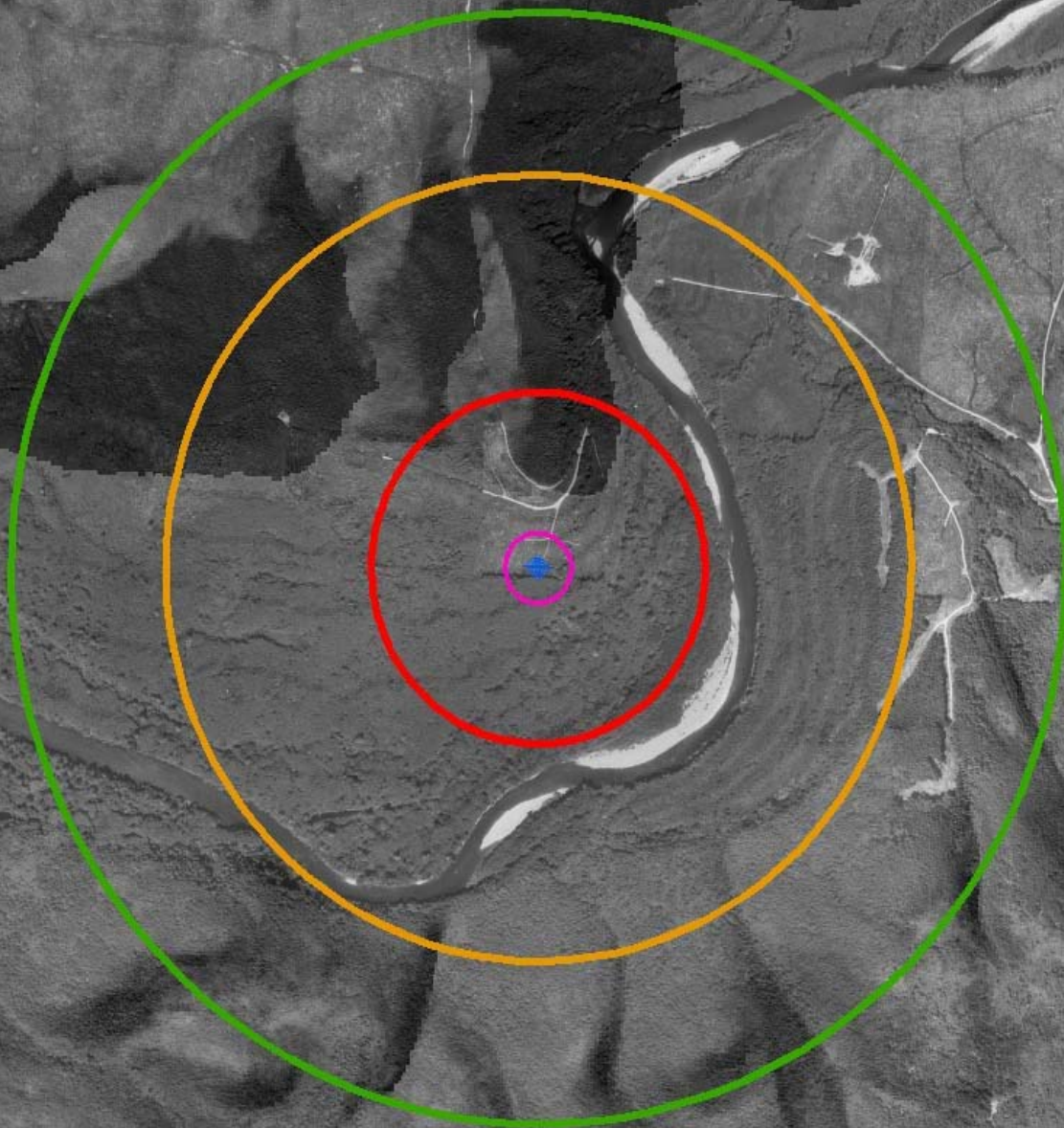
**Source Water Protection
Groundwater Protection Area Delineation
Calculated Fixed Radius**

-  Sanitary Control Area
-  1 Year Travel Zone
-  5 Year travel Zone
-  10 Year Travel Zone
-  PWS - Public Water Supply Well

0 380 760 1,520 2,280 3,040
Feet



Dale Becker 1/2004

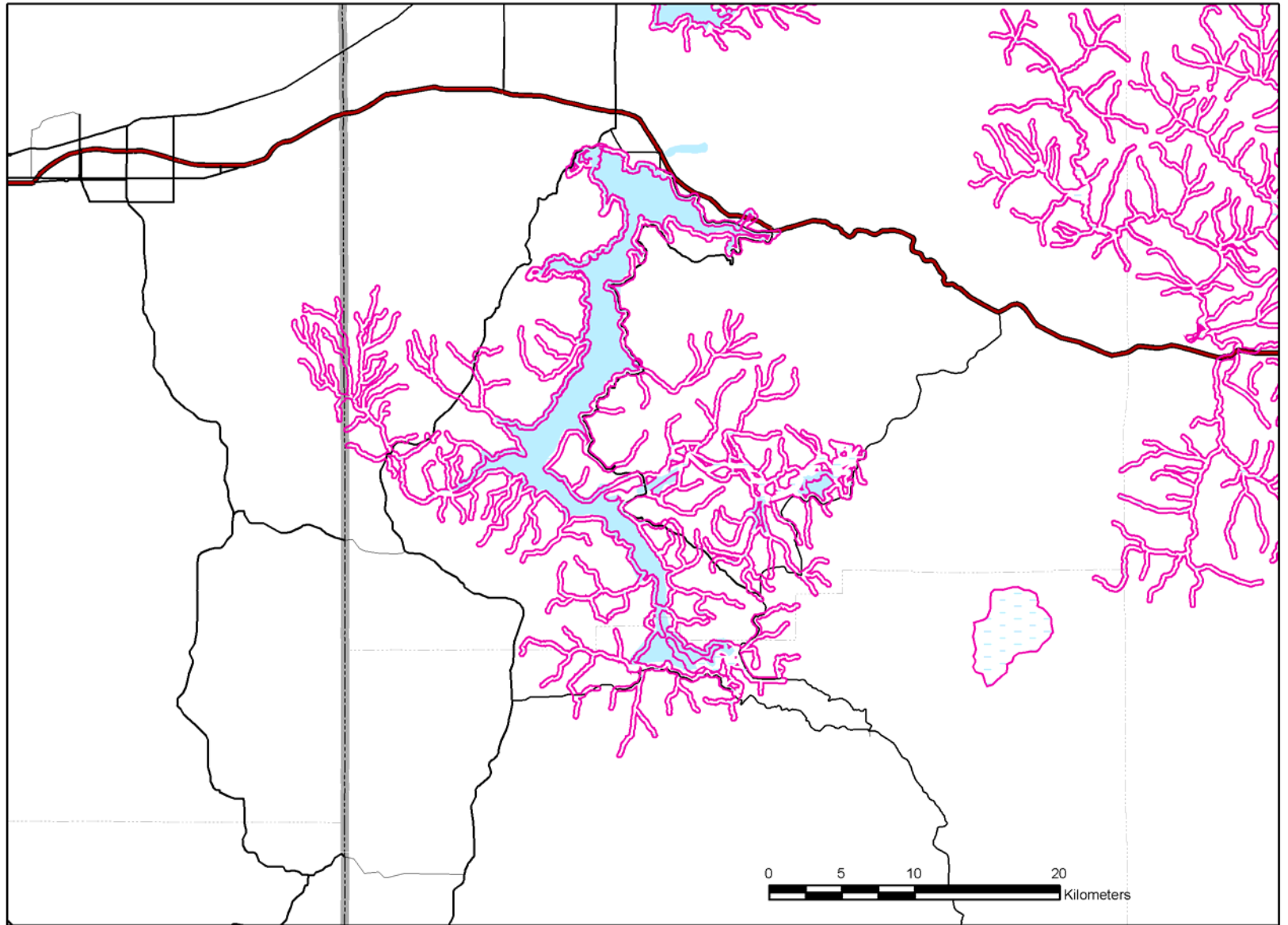


Wellhead Protection Requirements for Federal Agencies

- Federal agencies “shall be subject to and comply with all requirements of the State program”
- Only the President may exempt any potential contaminant source under the jurisdiction of any federal agency

Source Water Assessments

- 1996
- Surface water and ground water
- State programs approved by EPA
- Standard requirements:
 - Delineate source water protection areas
 - Identify potential contaminant sources
 - Determine Susceptibility to contamination
 - Communicate results publicly



- Source Water Assessments are for the protection and benefit of public water systems
- Vision: assessment results will inspire communities to protect source water
- States are designing and implementing Protection Programs

- EPA Goal: By 2008, 50% of Community Water Systems will be implementing source water protection plans
- Efforts to integrate assessment results into other programs
- Core principle of Source Water Protection:
 - it is unfair for communities to have to treat drinking water for anything other than naturally occurring pollutants