



BlueSky System Update

Brian Potter

PNW Fire Lab, AirFire Team
Regional Smoke Mgmt Meeting

Blue Sky

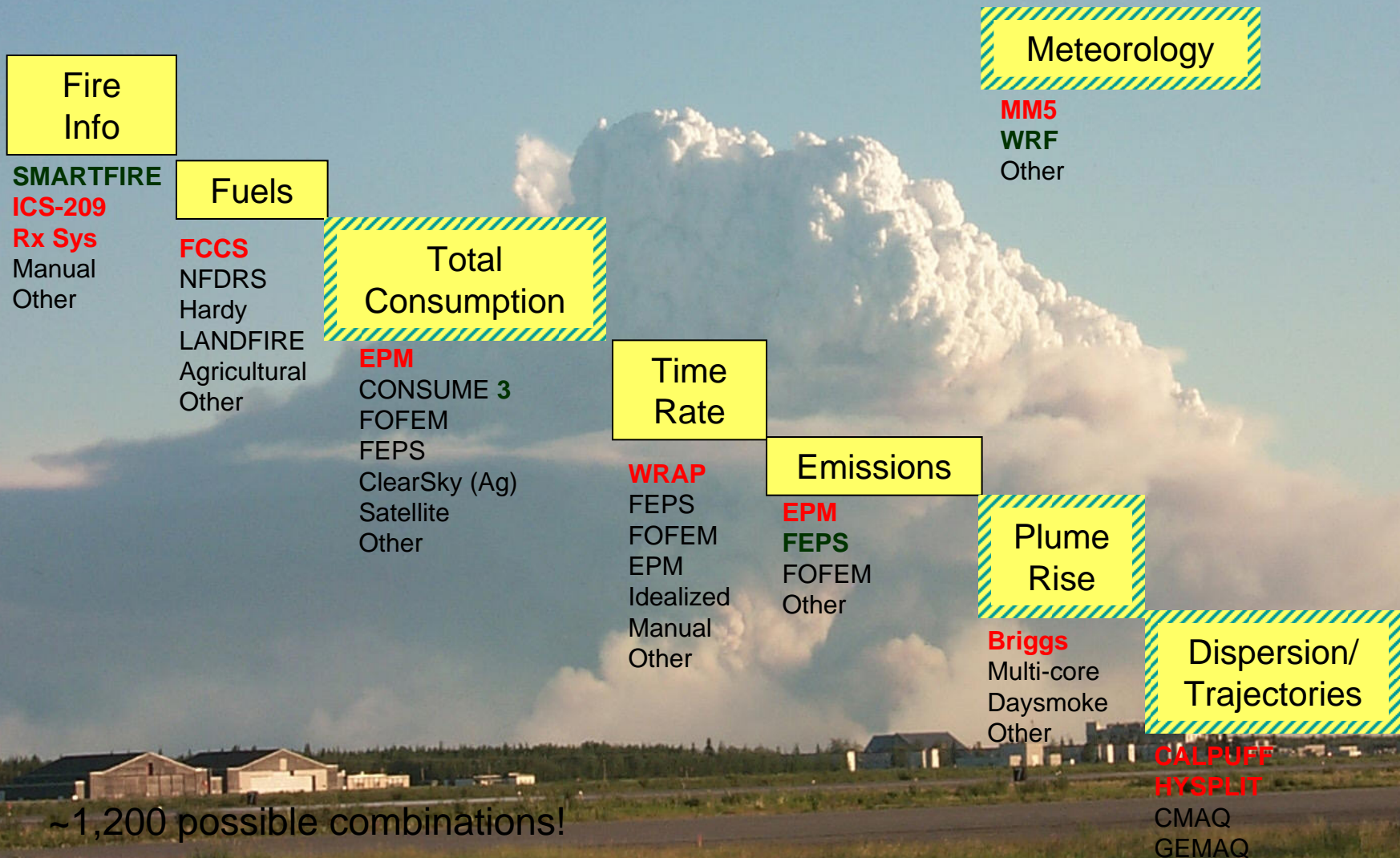
Smoke Modeling Framework

Integrating
knowledge, and
into one,
centralized
system.



NOT A MODEL

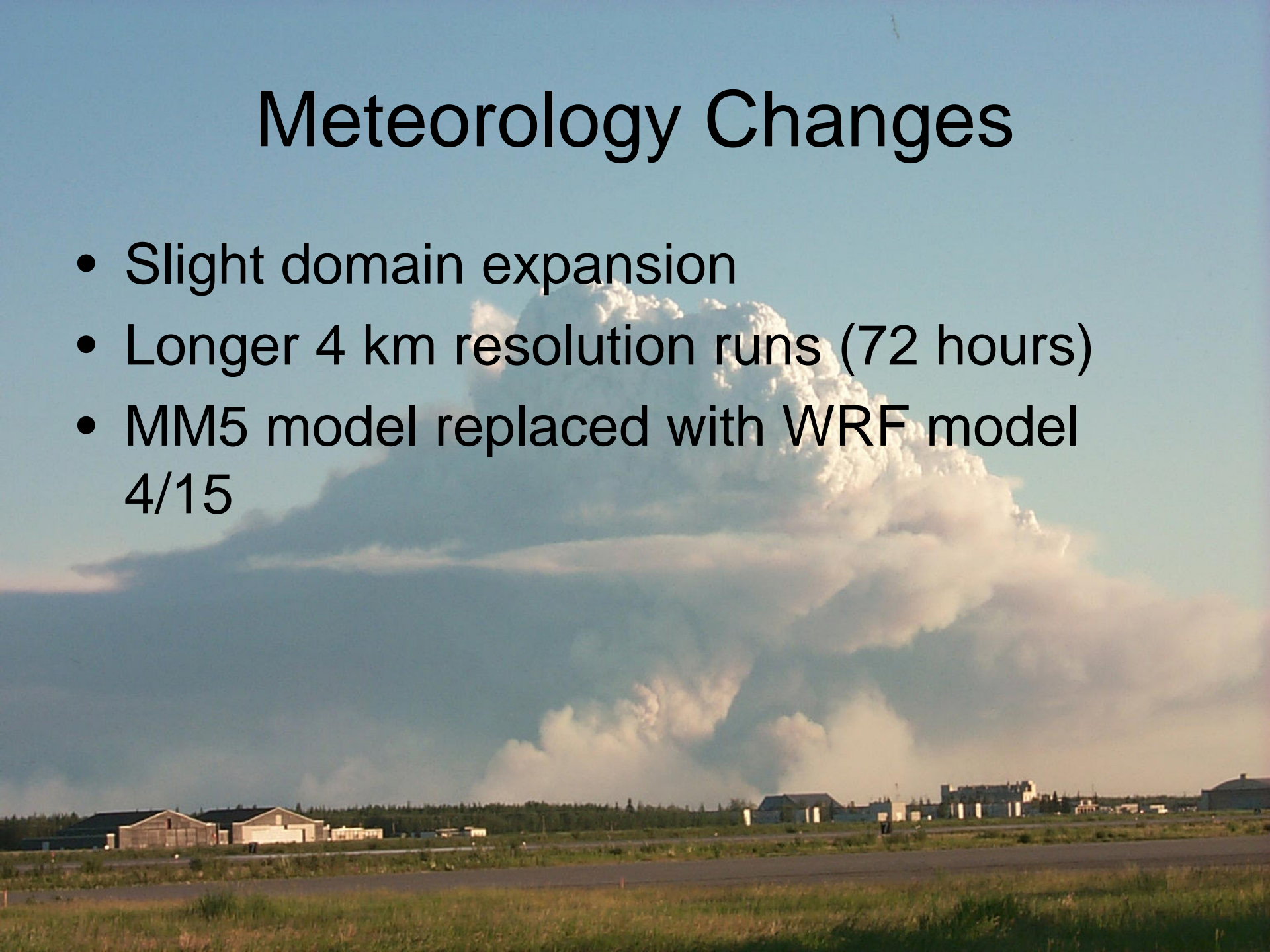
BlueSky Production Runs



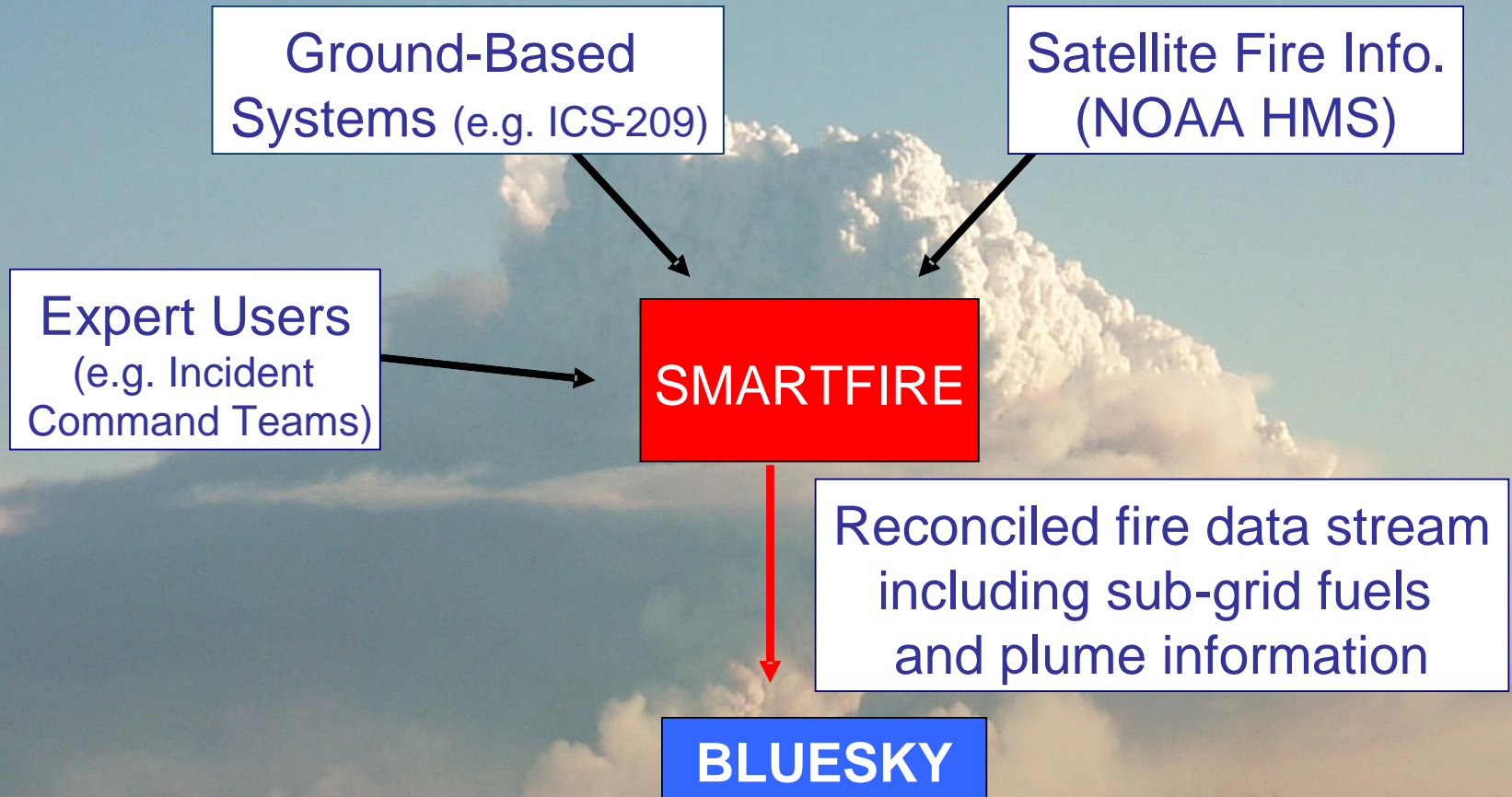
~1,200 possible combinations!

Meteorology Changes

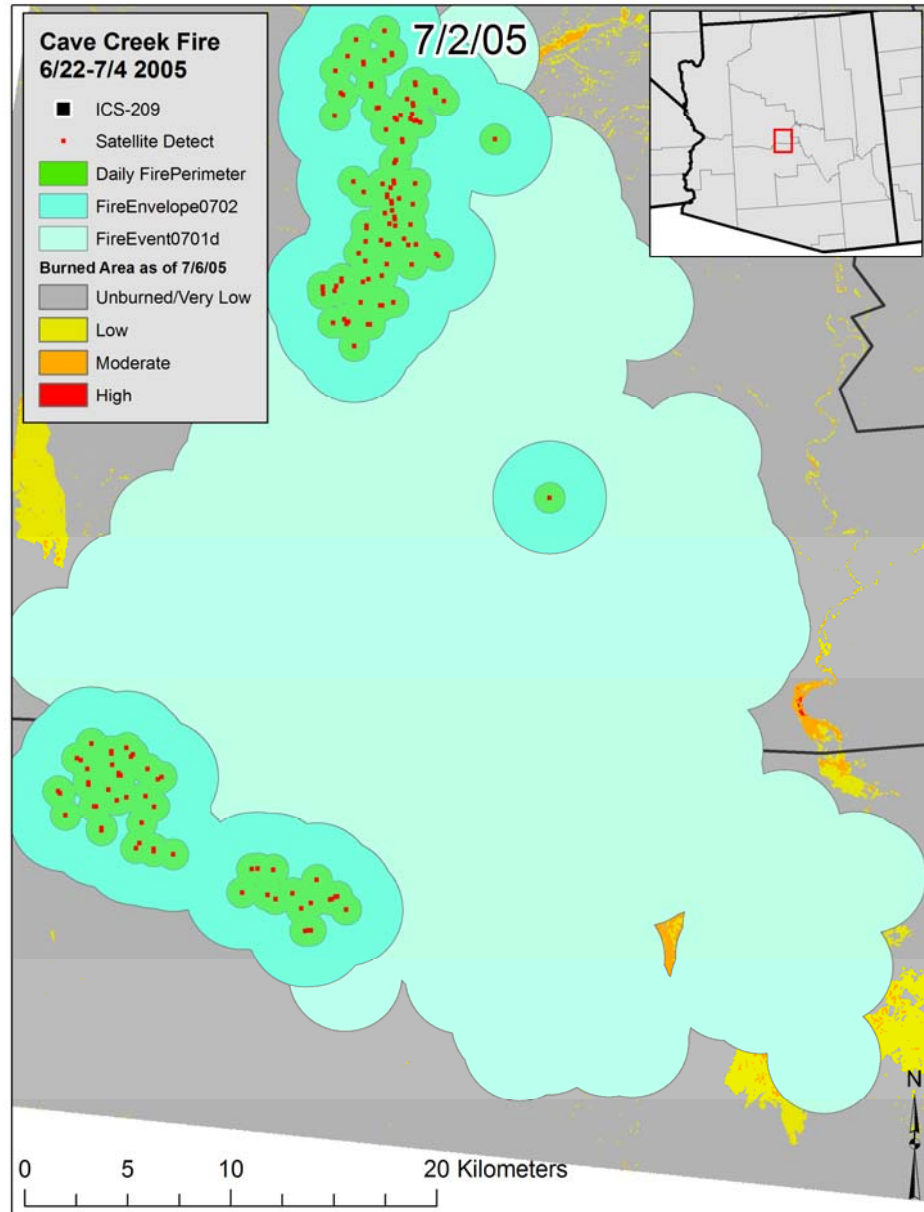
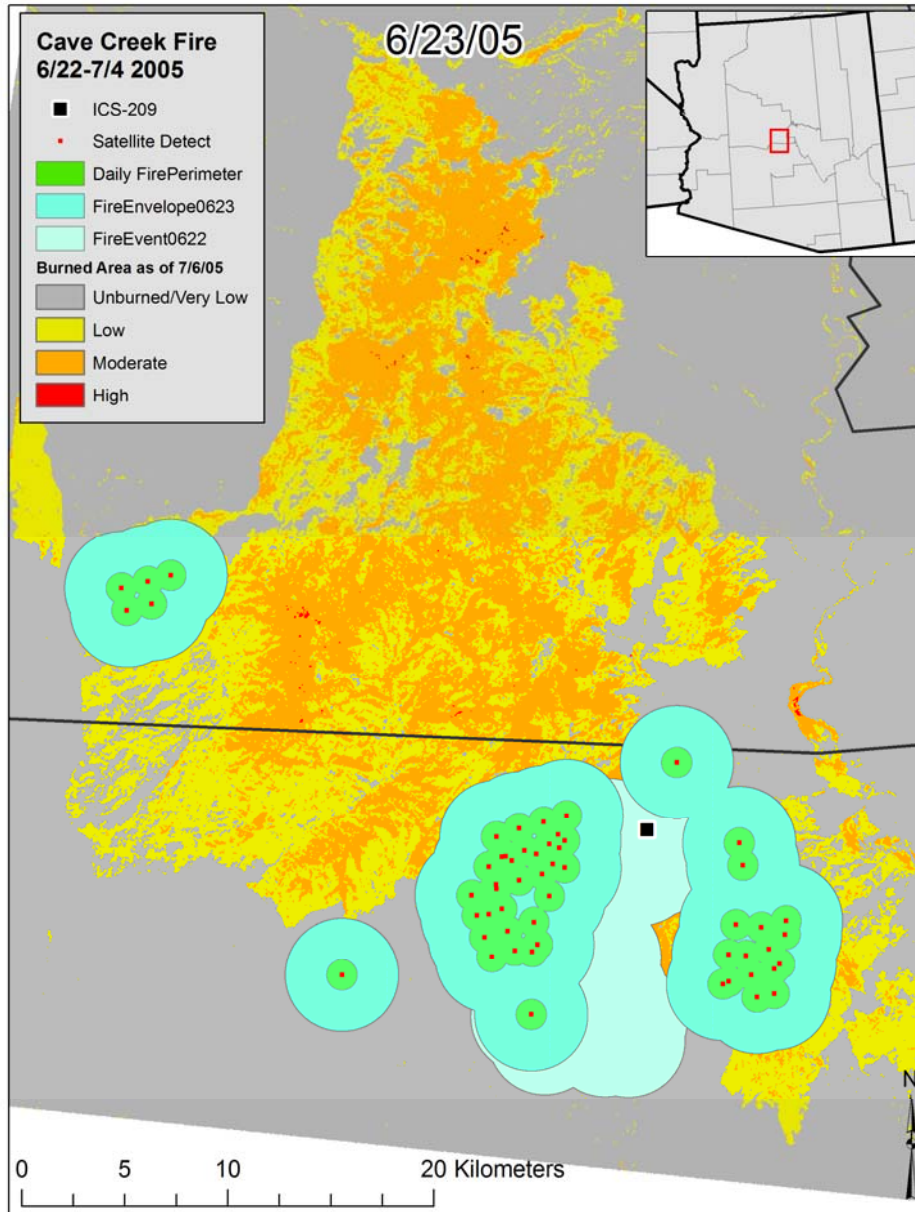
- Slight domain expansion
- Longer 4 km resolution runs (72 hours)
- MM5 model replaced with WRF model
4/15



SMARTFIRE



SMARTFIRE FireEvent Development



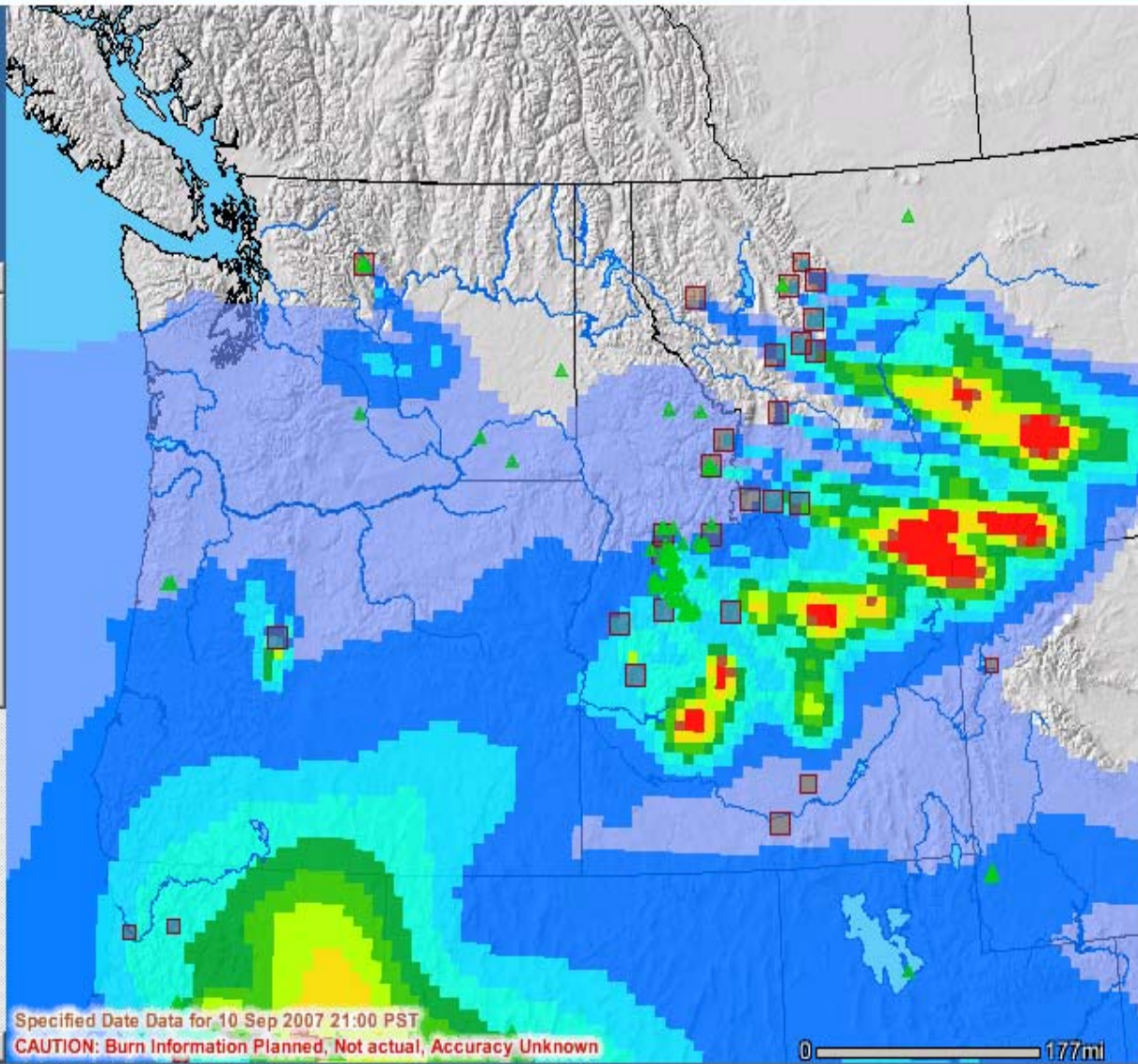
Display Data For:

Sep 10 9 pm
 2007 PST

-3HR -HR Refresh Map +HR +3HR
 Auto Refresh

Data Layers

- Burn Information
 - Smart Burn Locations
 - Prod Burn Locations
- 4km Predictions
- 12km Predictions
- Trajectories
 - Smart Traj Burn Hrly Points
 - Smart Traj Burn Lines
 - Prod Traj Burn Hourly Points
 - Prod Traj Burn Lines
 - Traj Default Hourly Points
 - Traj Default Lines
- Smoke/Weather Layers
 - Smart PM2.5
 - Production PM2.5
 - Mixing Height
 - Ventilation Index
 - Relative Humidity
 - Surface Temperature
- Surface Winds
- 500meter Winds (approx)
- NOAA Fire/Smoke Information
- Other Pollution Sources
- Observed Air Quality



Map Legend

- Smart Burn Locations
 - ▲ 0 - 100 Acres
 - ▲ 100 - 1000 Acres
 - ▲ > 1000 Acres
- Prod Burn Locations
 - 0 - 100 Acres
 - 100 - 1000 Acres
 - > 1000 Acres
- Production PM2.5

1	5	10	20	40	60	>65
Low			Mod			High
- Rivers

Navigation and utility icons: Zoom/Back, Pan/Move, Select/Show/Clear Data, Print/Download/Bookmark.

Under Development

- Location/Fuels/Consumption Sensitivity
- BlueSky-Historic Climate planning (AQUIPT)
- Scenario-building interface



A large, billowing white cumulus cloud dominates the sky, casting a shadow over a landscape with buildings and a road. The cloud is the central focus, with a dark shadow cast beneath it. In the foreground, there is a grassy field and a paved road. In the middle ground, there are several buildings, including a large white building and a smaller one. The sky is a clear, pale blue.

Questions?

AQUIPT

- BlueSky run with historic climate data
- If I burn here in January, where is the smoke likely to go?

