

Washington State Ag & Outdoor Burn Update 2008

-Department of Ecology

Washington Clean Air Act



■ Clean Air

- Permits conditioned to fully consider air quality
- Reduce burning to the fullest extent practical
- Permits conditioned to minimize emissions insofar as practical

■ Burning

- All burning limited to only when necessary
- Ag burning is allowed when reasonably necessary
- No practical alternative is available
- Urban Growth Areas
Special burn permits

Types of Ag & Outdoor Burning

- Cereal grain (wheat) stubble 80%
- Alfalfa, CRP, other crops 15%
- Orchard tearout 5%
- Grass seed field burning “banned” in 1998
- Exempt Agricultural Burning
 - Fencerows
 - Ditchbanks
 - Orchard Prunings
 - Windblown vegetation
- Outdoor, residential, land clearing, special

Burn/ No burn decision

1. Existing Air Quality

- Monitoring data
- Local observations
- Complaints
- Yellow sheet/Red sheet Revised

2. Meteorology

- MM5 ventilation model
- Wind direction
- Meteorologist consultation
- Clear sky
- Surface Observation
- National weather service

3. Permitted acreage

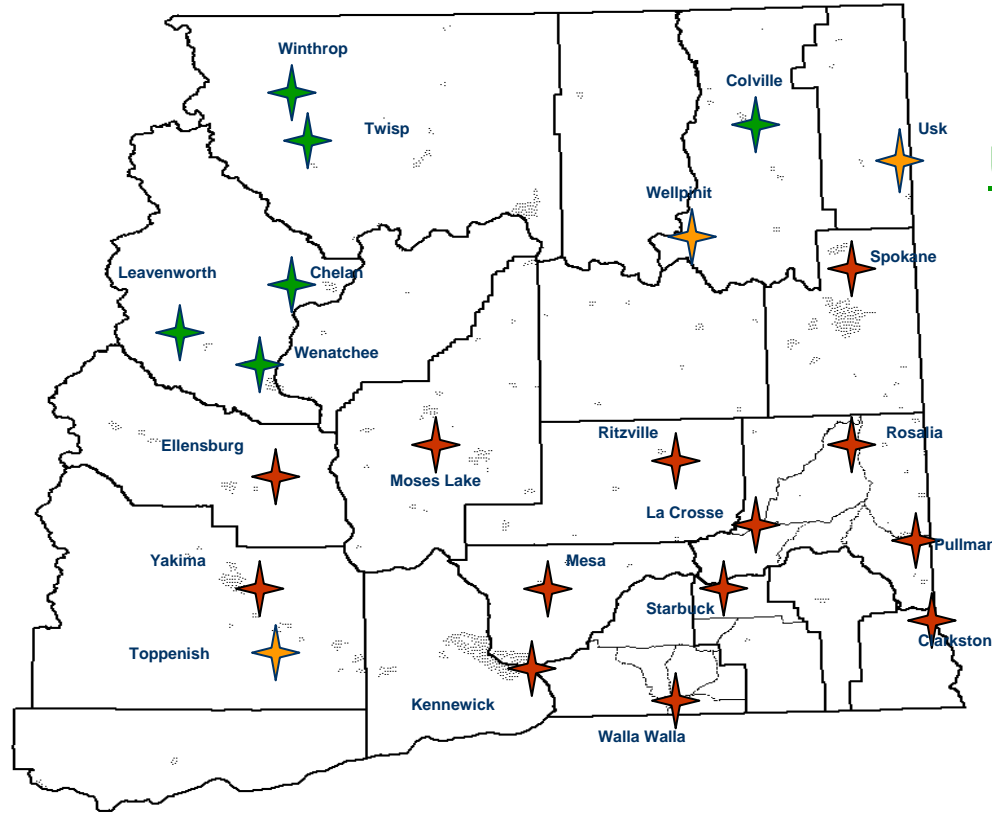
- Acres available to be burned- by location
- Special needs. ie- SSA's, wind direction, etc...
- Special burn permits, OUTDOOR BURNING



Smoke Impact Monitors

Ecology & Local Airs Operated:

- Spokane
- Kennewick
- Yakima
- Ritzville
- Pullman
- Walla Walla
- Moses Lake
- Mesa
- Starbuck
- La Crosse
- Rosalia
- Ellensburg
- Wenatchee
- Clarkston



U.S. Forest Service Operated:

- Wenatchee
- Leavenworth
- Chelan
- Twisp
- Winthrop
- Colville

EPA/Tribal Operated:

- Wellpinit
- Usk
- Toppenish

TOOLS

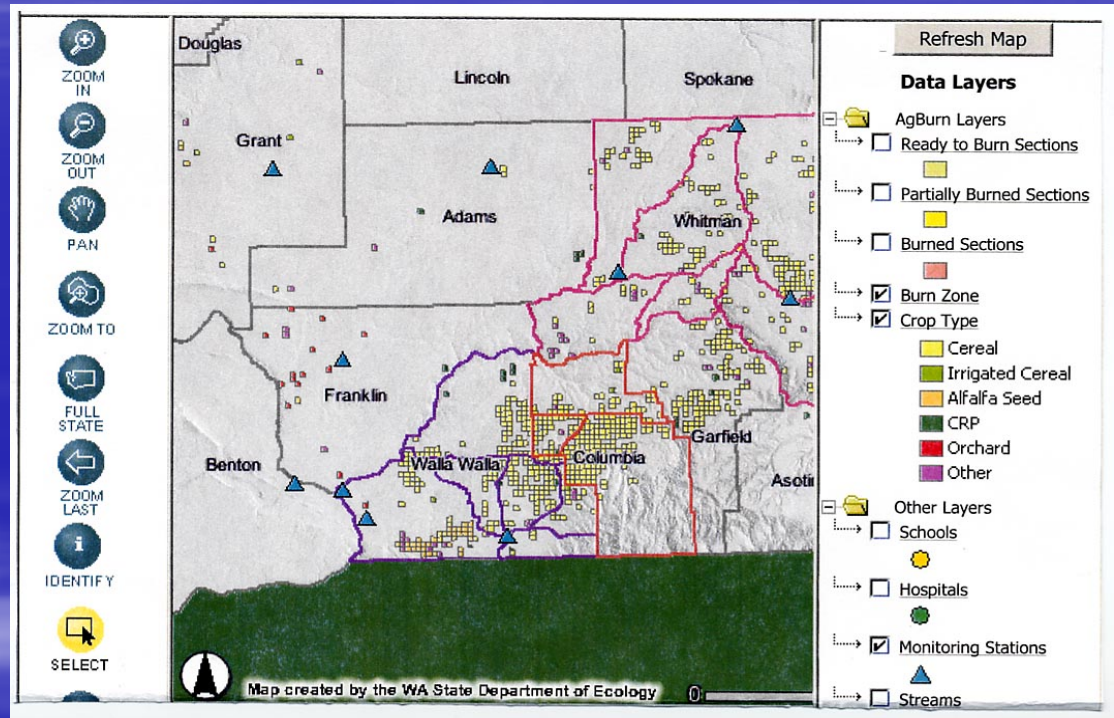
- **WXloop Weather fronts**
http://www.atmos.washington.edu/~ovens/loops/wxloop.cgi?fronts_ir+8
- **UW Weather Graphics loops**
<http://www.atmos.washington.edu/~ovens/loops/>
- **National Weather Service, Spokane**
<http://www.wrh.noaa.gov/otx/>
- **National Weather Service, Pendleton**
<http://www.wrh.noaa.gov/pdt/>
- **Surface Observation Map, Missoula**
<http://www.wrh.noaa.gov/mso/newrgl.php>
- **Clear sky**
<http://www.clearsky.wsu.edu/>
- **BlueSkyRains**
<http://www.blueskyrains.org/>
- **Pacific Northwest Environmental Forecasts and Observations**
<http://www.atmos.washington.edu/mm5rt/>
- **Ag Burn GIS**
<http://ecyapps3/agburngis/viewer.htm>

GIS Mapping

- Graphic Display of AgBurn Database

- Internal use for planning

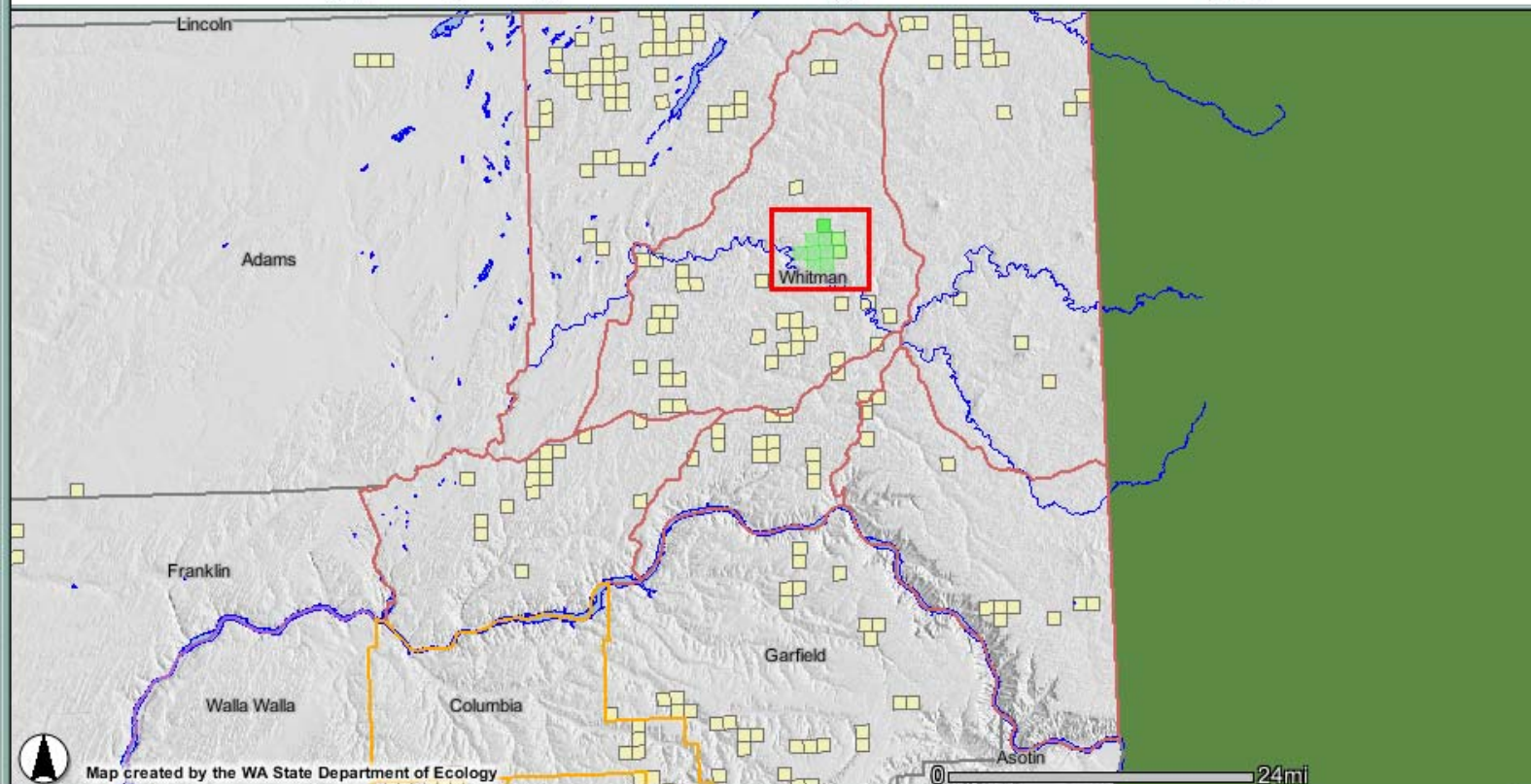
- External use for public notification



<http://ecyhqapp18/agburngis/viewer.htm>



- FULL STATE
- ZOOM IN
- ZOOM OUT
- PAN
- ZOOM TO
- ZOOM LAST
- IDENTIFY
- SELECT
- BUFFER
- CLEAR SELECT



Refresh Map

Data Layers

- Burn Status
 - Field - Ready
 - Bale - Ready
 - Orchard - Ready
 - Field - Partial
 - Bale - Partial
 - Orchard - Partial
 - Field - Completed
 - Bale - Completed
 - Orchard - Completed
 - Spot Burn
 - Burn Zone
- Crop Types
- Roads, Water and Structures
- Administrative Boundaries

All Status

Rec	Type	Application #	Name	Common Name	Start	End	Home Phone	Other Phone	Acres Permitted	Burned	Rem
		1414_05					(509) 848				

Metering



- “... a technique of limiting emissions at specific times and places by taking into account potential emission rates, forecasted weather, & air quality...”
- **Don't overflow the tub!**

Post Burn Reporting

- Web-based permitting database.
- Importance of having information on a timely basis. Farmers can send in electronically and mail to Spokane/Yakima office
- Metering burning to prevent too many acres on one day.
- Post Burn report required w/in 7 days. Revised WAC.
- Enforcement difficult, good neighbor approach best.

Public Notification/ Feedback

- Complaint Line, 866-211-6284
- Burn Line, 800-406-5322
- Listserv
- Post Burn Reporting
- Working with Idaho
- Outdoor Burn Website Ag & Outdoor
- Enforcement

Other Stuff...

- Field Size,
- Permit applications- legal description
- Enforcement- Over-flight Program & FIRM
- New data base, ties data and burn call together
- Working with clean air activists/public
- Working with farmers
- Transparency

Questions??



Contact us @
agburnteam@ecy.wa.gov

(509) 329-3400