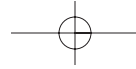
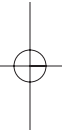
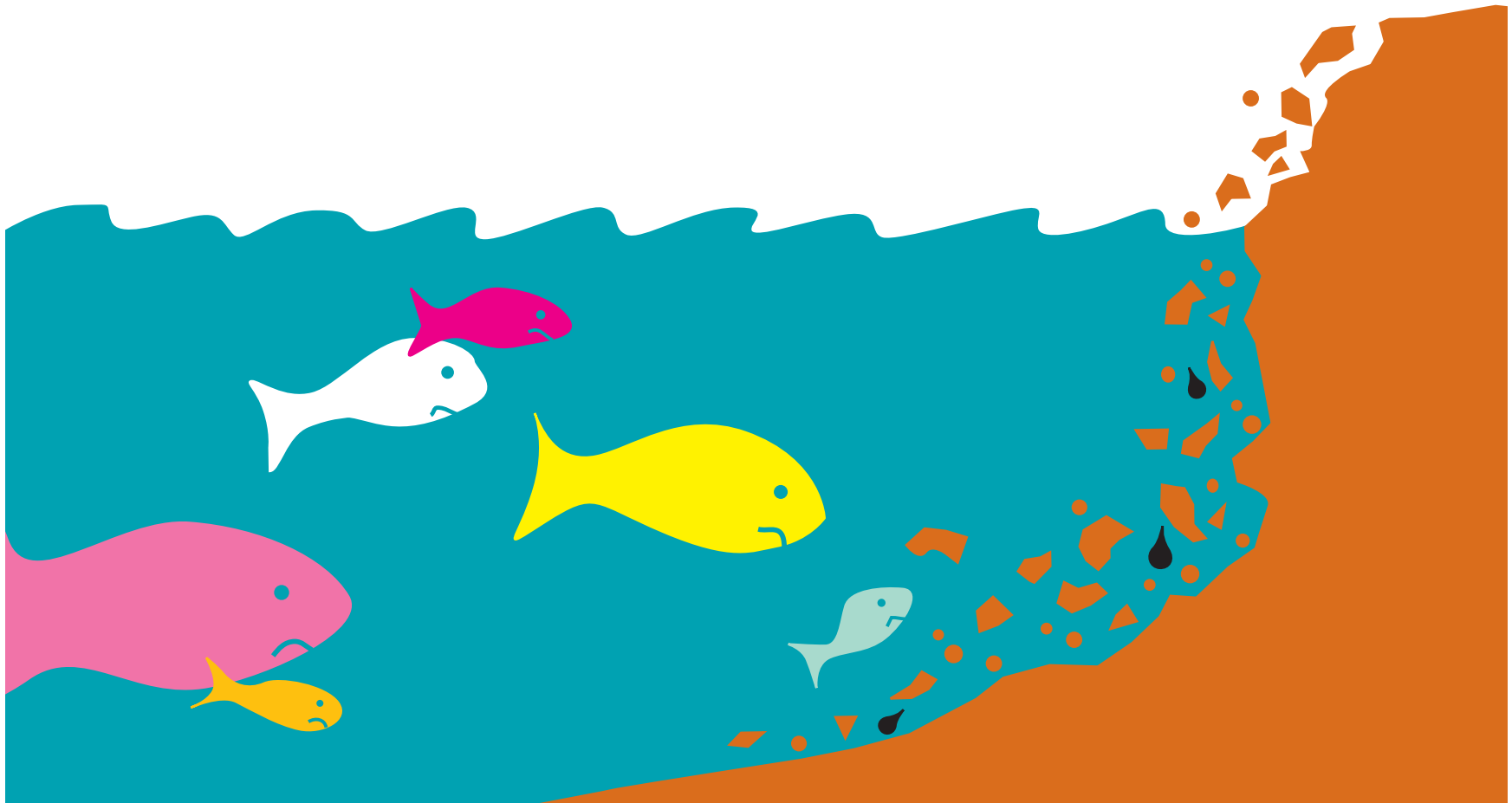


“Please don’t soil our waters!”



It's no fish story: soil erosion is our #1 water pollutant.

Believe it or not, the biggest threat to Maine's water quality is plain old dirt, washing into our rivers, lakes and streams...from our lawns, roads, driveways and construction sites.

What's wrong with soil? It clogs waterways, hurts fishes' gills, and carries a lot of oil and other chemicals that contaminate the water and lead to scummy green lakes.

What can you do? A few simple things are a great start:

- plant shrubs and trees to create a buffer between your property and the water to filter out pollutants
- seed and mulch any bare soil on your land
- repair and stabilize places where you see soil eroding
- minimize the time soil is exposed when you do construction or landscaping

Learn more about what you can do: call 1-800-452-1942.



A program of the Maine Department of Environmental Protection

www.MaineDEP.com

PRESORTED
FIRST CLASS MAIL
U.S. POSTAGE
PAID
PORTLAND, ME
PERMIT #6