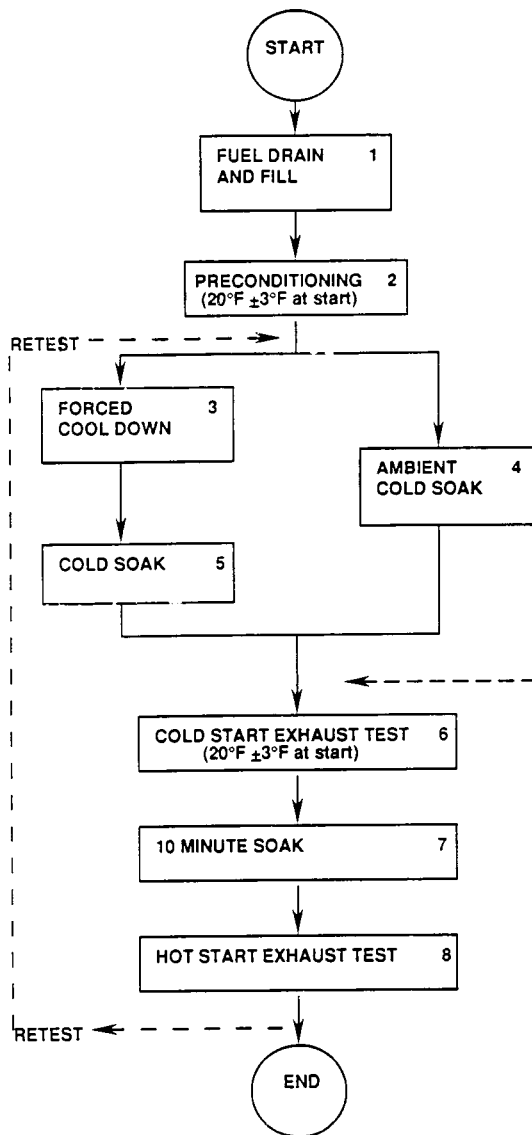


Cold CO Test Procedure



STEP	NOTE
1	Winter grade fuel (Optional use of FTP fuel by manufacturer)
2*	Full UDDS (Optional use of higher temp by manufacturer)
3	<ul style="list-style-type: none"> No time specifications Uniform vehicle cooling Oil Temp. at 20°F ±3°F
4*	12-36 hours
5*	1 hour minimum
6*	Full UDDS
7	On dynamometer
8*	Partial UDDS (505 sec.)

NOTE: If vehicle leaves 20° soak area to transfer to 20° test area and passes through a warm area (>25°F) it must be restabilized in the test cell for six times the period it was exposed to the warmer temperature.

*Temperature Specifications

Average	20°F ±5°F
Maximum excursions	10°F min., 30°F max.
Three-minute excursions	15°F min., 25°F max.