

**Federal Transit Administration  
Scope & Activity Line Item Codes**

Last Update 03/30/2006

Status: **APPROVED**

TRANSPORTATION ELECTRONIC AWARD & MANAGEMENT
SCOPE CODE CHART
SCOPE CODES

<b>Category</b>	<b>Description</b>	<b>Code</b>	<b>Sub-Code</b>	<b>Special Instructions</b>
Capital	Bus Rolling Stock	111-00		
	Bus Transitways / Lines	112-00		
	Bus Station Stops & Terminals	113-00		
	Bus Support Equip / Facilities	114-00		
	Bus Electrification / Power Dist.	115-00		
	Bus Signal & Communication Equip	116-00		
	Bus Other Capital Items	117-00		
	Bus Transit Enhancements	119-00		
	Fixed Guideway Rolling Stock (rail)	121-00		
	Fixed Guideway Transitways / Lines	122-00		
	Fixed Guideway Station Stops & Terminals	123-00		
	Fixed Guideway Support Equip / Facilities	124-00		
	Fixed Guideway Electrification / Power Dist.	125-00		
	FG Signal & Communication Equip	126-00		
	Fixed Guideway Other Capital Items	127-00		
	Fixed Guideway Transit Enhancements	129-00		
	New Start Rolling Stock	131-00		} <b>Transitioning out</b> Use these Scopes for Amendments Only.
	New Start Transitways / Lines	132-00		
	New Start Stops & Terminals	133-00		
	New Start Support Equip / Facilities	134-00		
	New Start Electrification / Power Dist.	135-00		
	New Start Signal & Comm. Equip	136-00		
	New Start Other Capital Items	137-00		
	New Start Transit Enhancements	139-00		
} <b>New Start Capital Projects</b>	Guideway & Track Elements	140-10		} <b>New Start Capital Projects</b> Use these Scopes for all new New Start grants/projects regardless of funding source.  <b>Use 13.XX.XX ALI's for New Start Vehicles</b>
	Stations, Stops, Term, Intmdl	140-20		
	Support Facilities	140-30		
	Sitework & Special Conditions	140-40		
	Systems	140-50		
	ROW, Land, Existing Imprvmnts	140-60		
	Vehicles	140-70		
	Professional Services	140-80		
	Unallocated Contingency	140-90		
	Finance Charges	141-00		
Operating	Operating Assistance	300-00		
Planning	State Planning & Research	441-00		} <i>Use 44.2X.XX ALIs</i> <i>Use 70.XX.XX ALIs</i> <i>Use 55.XX.XX ALIs</i> <i>Use 50.XX.XX ALIs</i> <i>Use 55.XX.XX ALIs</i> <i>Use 44.2X.XX ALIs</i>
	University Research		441-10	
	Human Resources		441-20	
	Training Fellowship		441-30	
	Research & Development		441-60	
	Metropolitan Planning		441-80	
	Metropolitan Planning	442-00		
	Consolidated Planning Grants	443-00		
Review	Oversight Reviews	510-00		} <i>Used only by headquarters.</i> <i>Use 55.xx.xx ALIs</i>
Research	Research Projects	550-00		
Safety & Security	Safety	571-00		} <i>Use for Security Supplemental Funding projects only. HQ Use only.</i>
	Security	572-00		
} <b>Scopes for: 5310, 5311, 5316, 5317</b>	Other Program Costs	600-00		} <i>Option: Combine Scopes 300, 610, 620, &amp; 630 into a single scope code</i> <i>Use ALI code 11.80.00</i>
	State / Programs Administration	610-00		
5311 only	Project Administration	620-00		} <i>Use ALI code 11.79.00</i> <i>Use ALI code 11.73.00</i> <i>Use Capital, Operating, or Pinnng ALIs</i> <i>Use 43.5X.XX ALIs</i>
5310, 5311 only	Program Reserve/Category C	630-00		
5311 only	Intercity Bus Transportation	634-00		
5311 only	Rural Transit Asst Program (RTAP)	635-00		
	} Sec 5311 and Sec 5310 budgets may also use Capital, Operating, or Planning Scope codes in addition to the special scopes listed in this section.			
See Note *	5310 Projects	641-00		} <b>* Note:</b> Special Categories for 5310, 5316, 5317 projects in 5307 or 5311 Grants
See Note *	JARC Projects	646-00		
See Note *	New Freedom Projects	647-00		

**Federal Transit Administration  
Scope & Activity Line Item Codes  
Status: APPROVED**

Last Update 03/30/2006

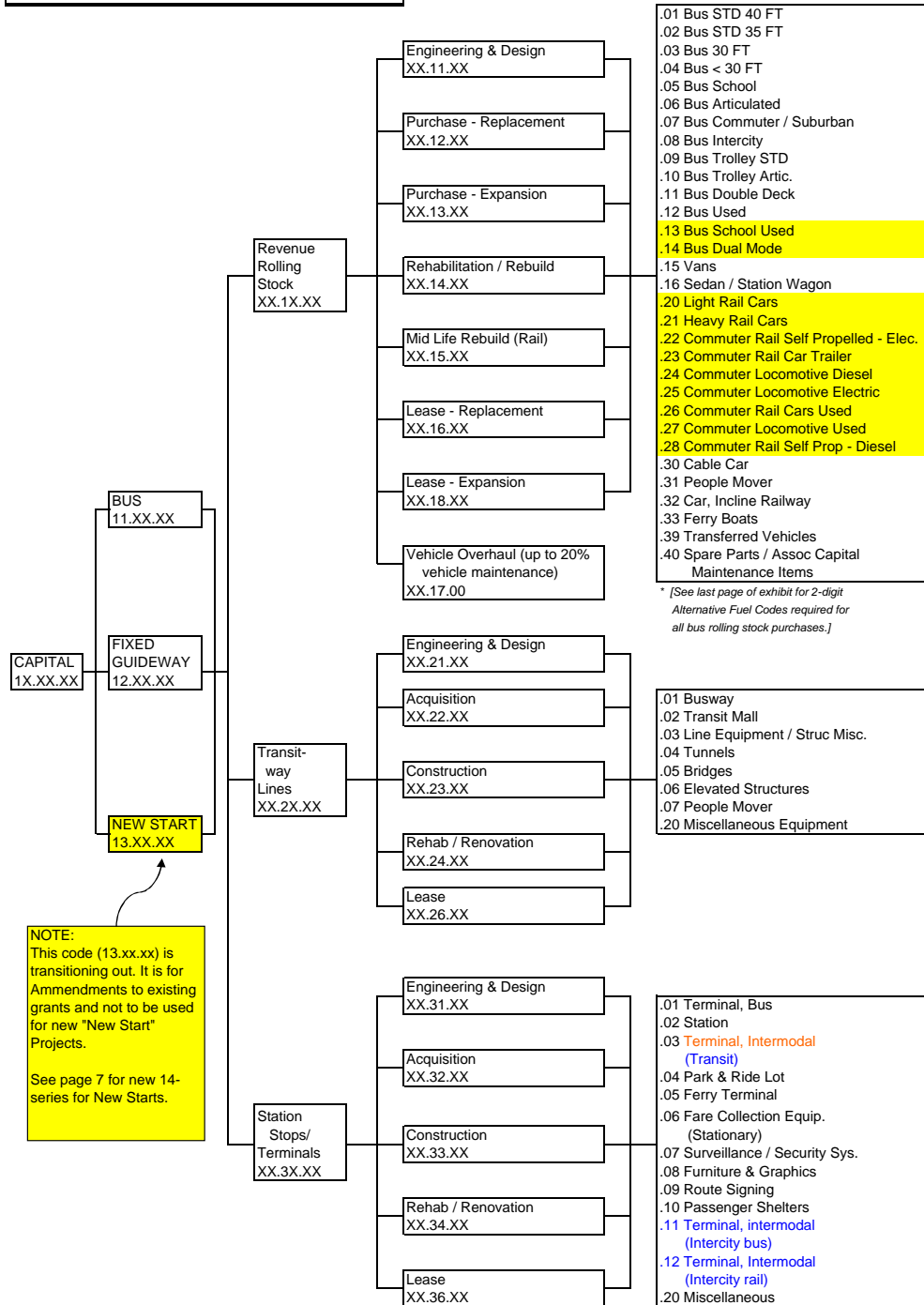
TRANSPORTATION ELECTRONIC AWARD & MANAGEMENT
SCOPE CODE CHART
NON-ADD SCOPE CODES

Non-add Codes	Security Expenditures	991-00	Break out the security related expenses included in the budget - other than 5302(a)(1)(J) items; use the ALI codes from the project budget.
	Tribal Projects	992-00	Use to identify tribal projects under any program.
	Fleet Management	993-00	
	Electronic Fare	994-00	
	Traveler Information	995-00	
	ADA / CAA Increased Federal Share	996-00	
	Transfer of Federal Equity	998-00	
	Contingency Projects	999-00	

**Federal Transit Administration  
Scope & Activity Line Item Codes  
Status: APPROVED**

Last Update 03/30/2006

TRANSPORTATION ELECTRONIC AWARD & MANAGEMENT
ACTIVITY LINE ITEM CODE CHART
FOR CAPITAL EXPENDITURES



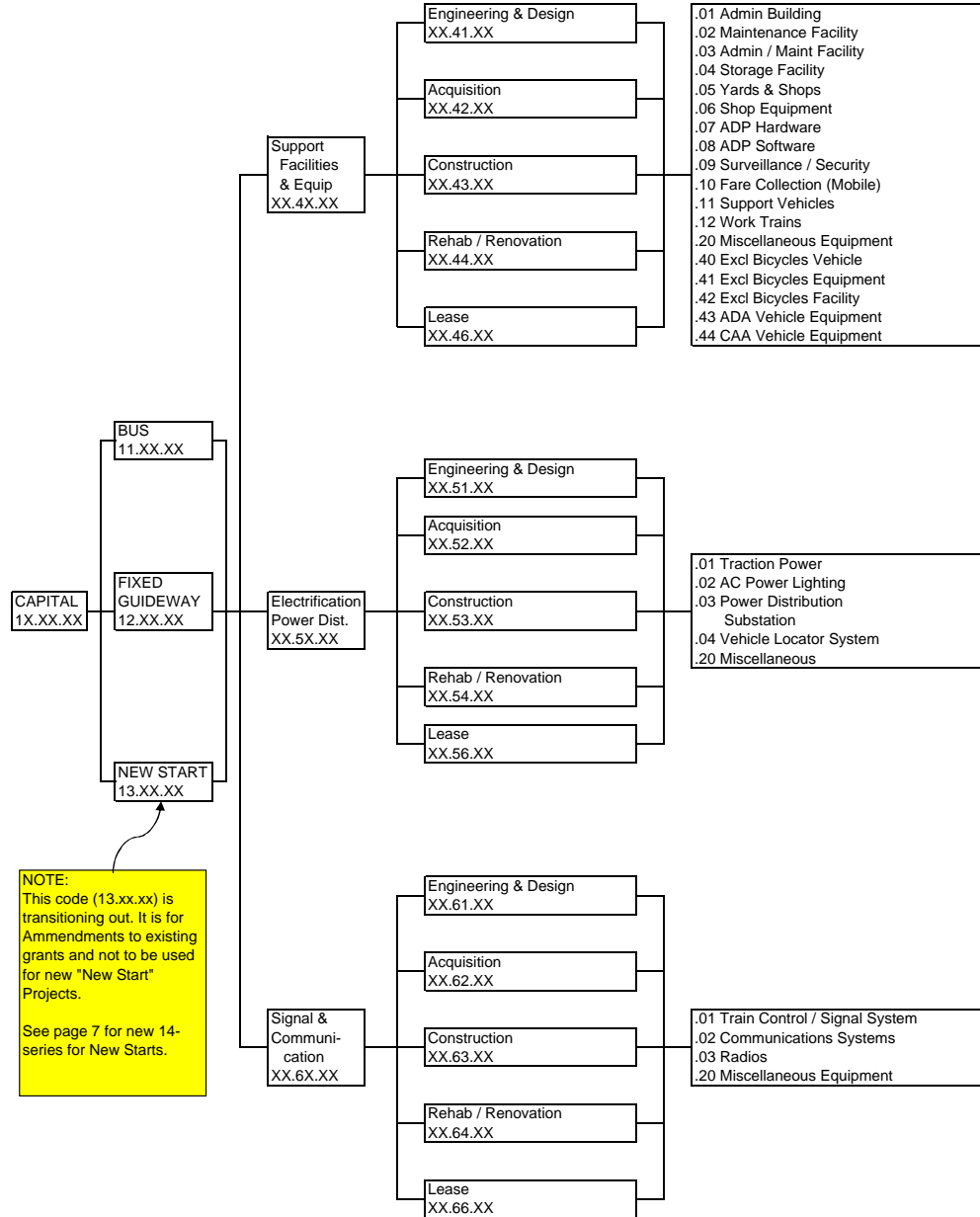
**NOTE:**  
This code (13.xx.xx) is transitioning out. It is for Amendments to existing grants and not to be used for new "New Start" Projects.  
See page 7 for new 14-series for New Starts.

\* [See last page of exhibit for 2-digit Alternative Fuel Codes required for all bus rolling stock purchases.]

**Federal Transit Administration  
Scope & Activity Line Item Codes  
Status: APPROVED**

Last Update 03/30/2006

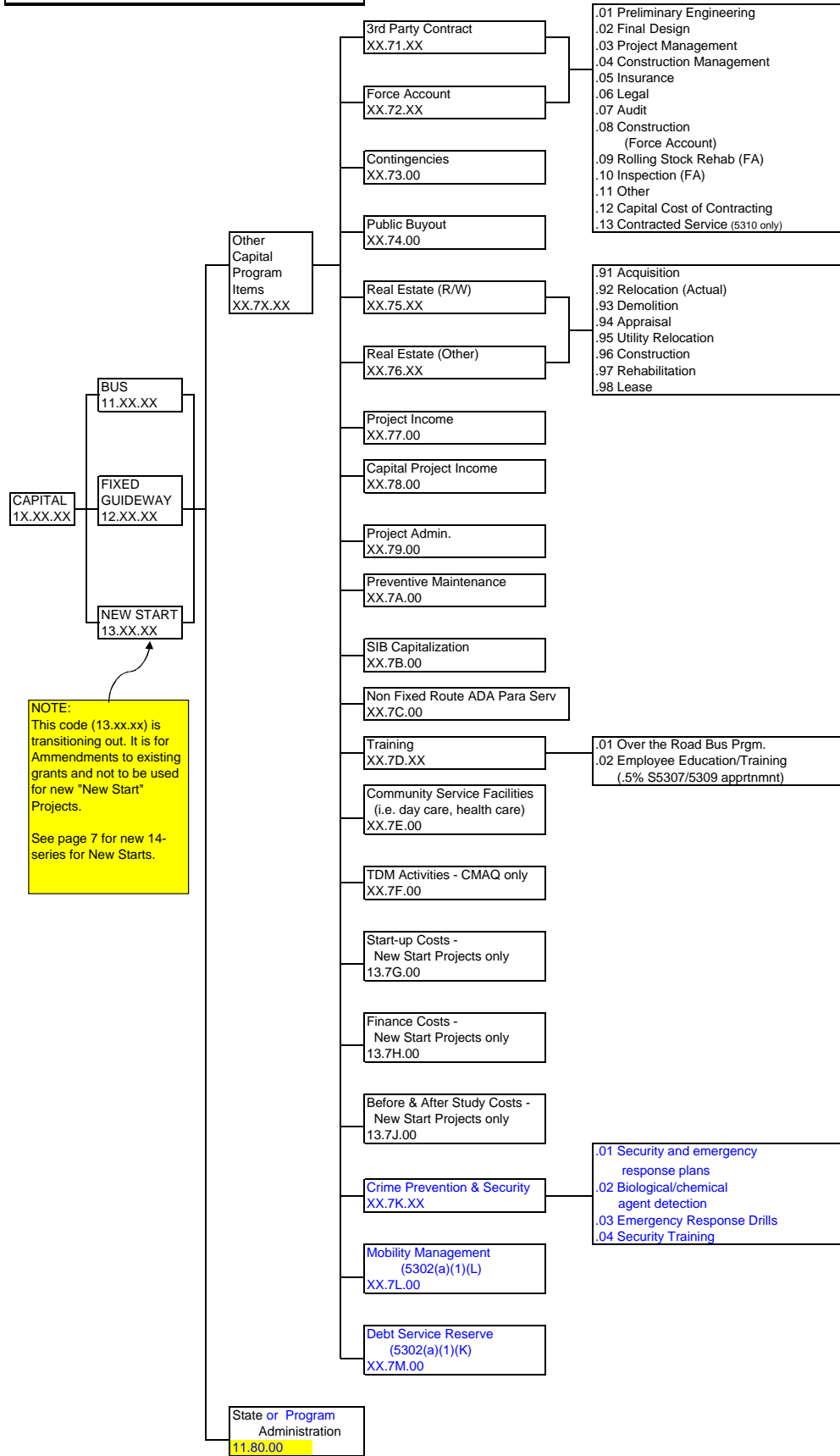
TRANSPORTATION ELECTRONIC AWARD & MANAGEMENT
ACTIVITY LINE ITEM CODE CHART
FOR CAPITAL EXPENDITURES



**Federal Transit Administration  
Scope & Activity Line Item Codes  
Status: APPROVED**

Last Update 03/30/2006

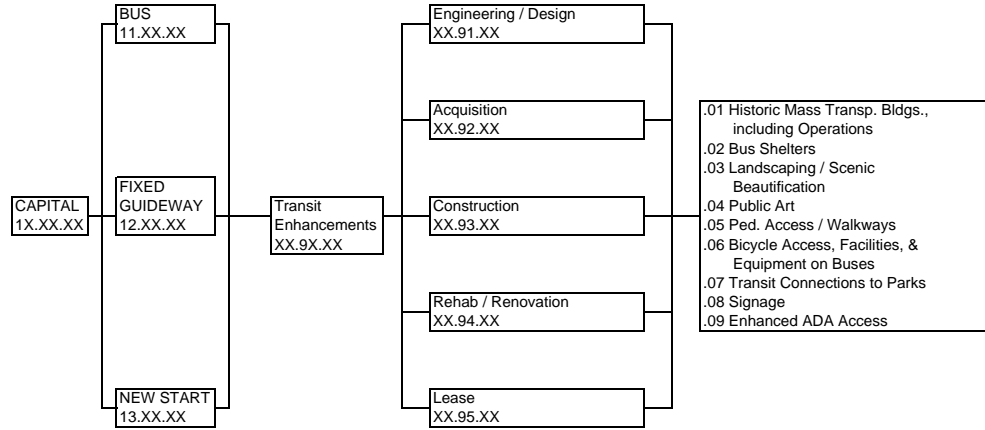
TRANSPORTATION ELECTRONIC AWARD & MANAGEMENT
ACTIVITY LINE ITEM CODE CHART
FOR CAPITAL EXPENDITURES



**Federal Transit Administration  
Scope & Activity Line Item Codes  
Status: APPROVED**

Last Update 03/30/2006

TRANSPORTATION ELECTRONIC AWARD & MANAGEMENT
ACTIVITY LINE ITEM CODE CHART
FOR CAPITAL EXPENDITURES



**Federal Transit Administration  
Scope & Activity Line Item Codes**

Last Update 03/30/2006

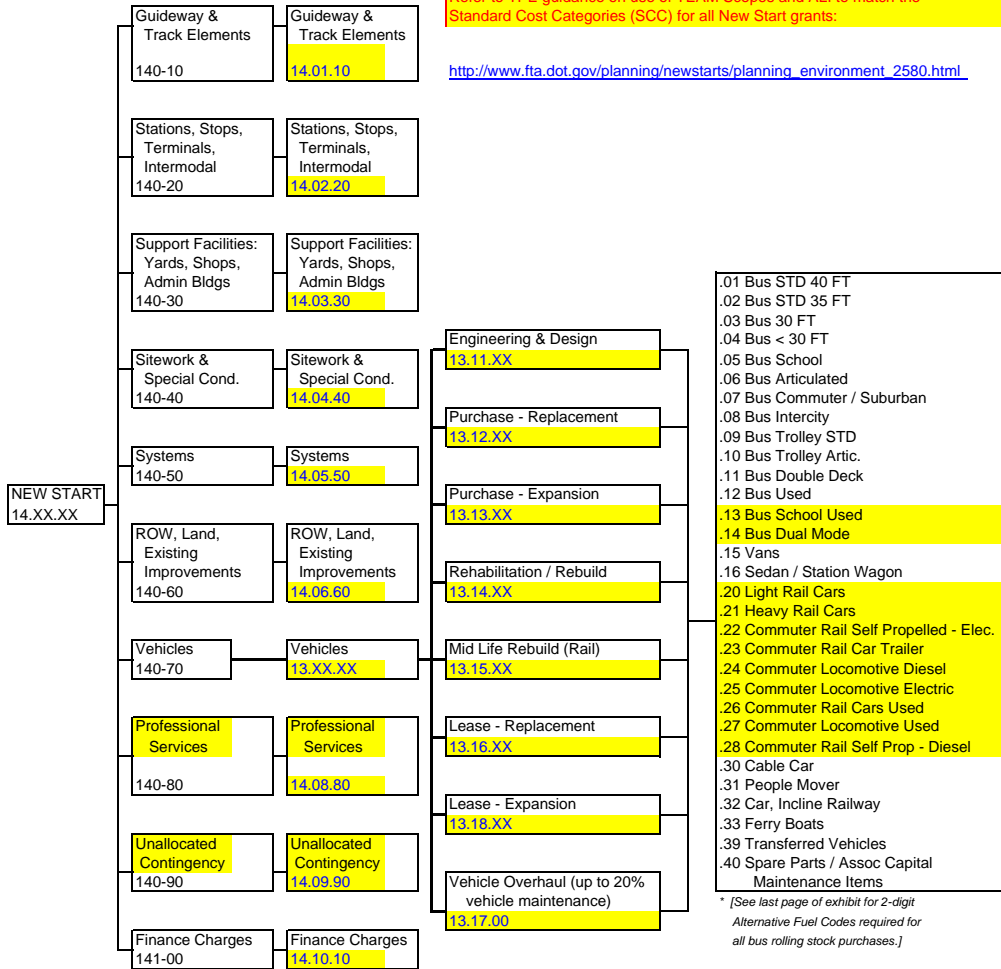
**Status: APPROVED**

TRANSPORTATION ELECTRONIC AWARD & MANAGEMENT
ACTIVITY LINE ITEM CODE CHART
FOR CAPITAL EXPENDITURES

**NOTE: Use these New Start codes for new grants only.**

Refer to TPE guidance on use of TEAM Scopes and ALI to match the Standard Cost Categories (SCC) for all New Start grants:

[http://www.fta.dot.gov/planning/newstarts/planning\\_environment\\_2580.html](http://www.fta.dot.gov/planning/newstarts/planning_environment_2580.html)

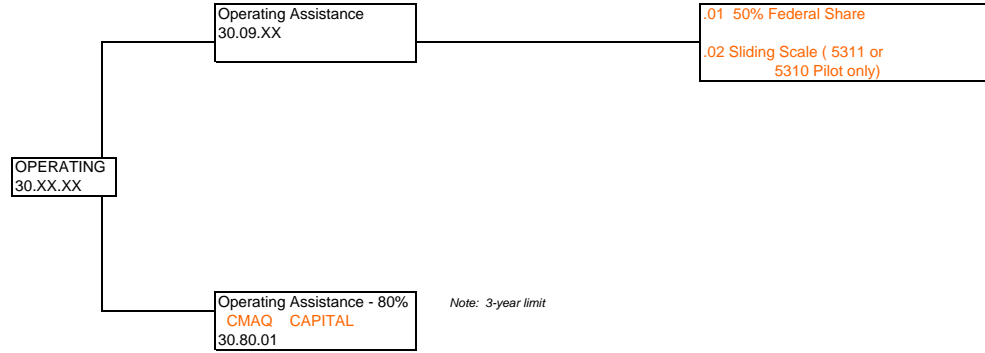


\* [See last page of exhibit for 2-digit Alternative Fuel Codes required for all bus rolling stock purchases.]

Federal Transit Administration  
Scope & Activity Line Item Codes  
Status: APPROVED

Last Update 03/30/2006

TRANSPORTATION ELECTRONIC AWARD & MANAGEMENT
ACTIVITY LINE ITEM CODE CHART
FOR OPERATING EXPENDITURES

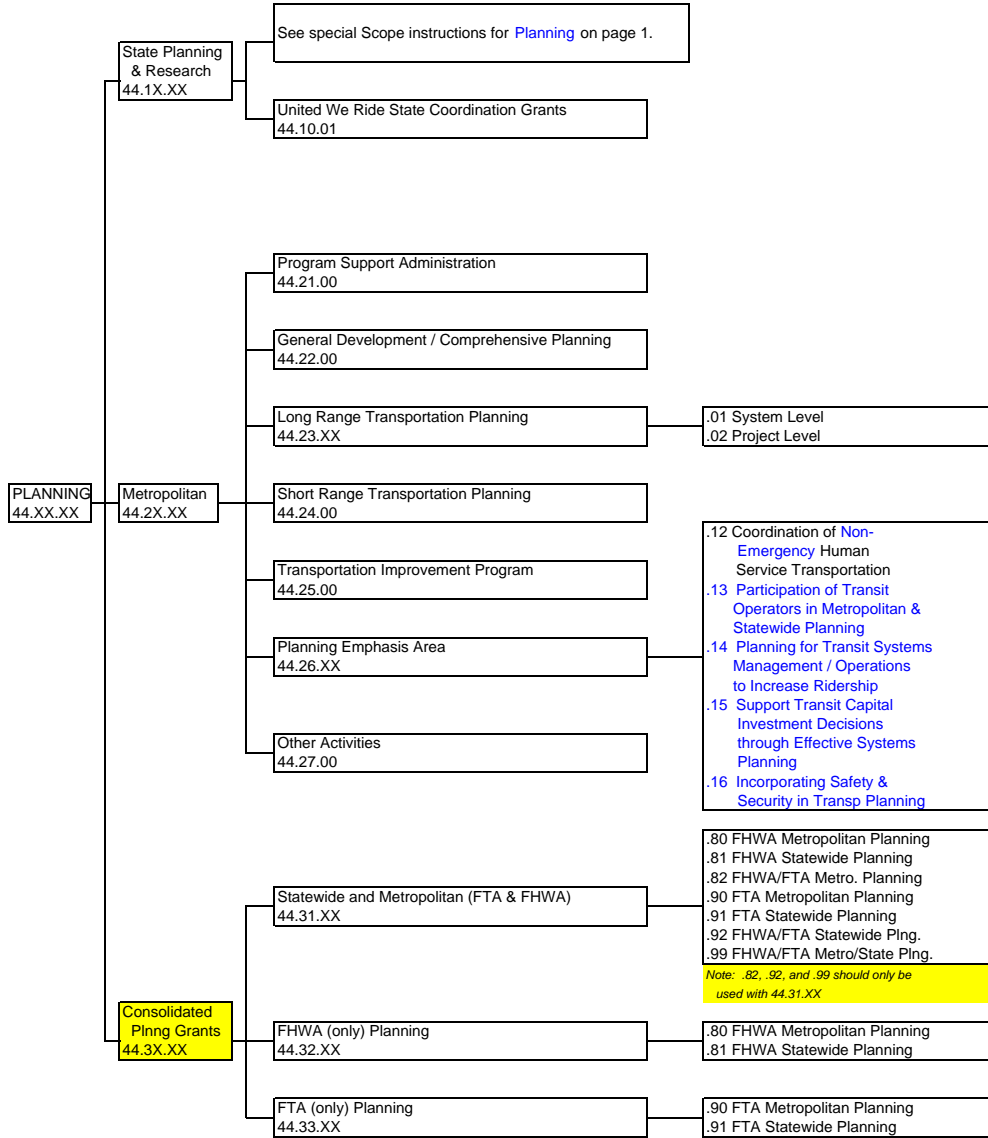




**Federal Transit Administration  
Scope & Activity Line Item Codes  
Status: APPROVED**

Last Update 03/30/2006

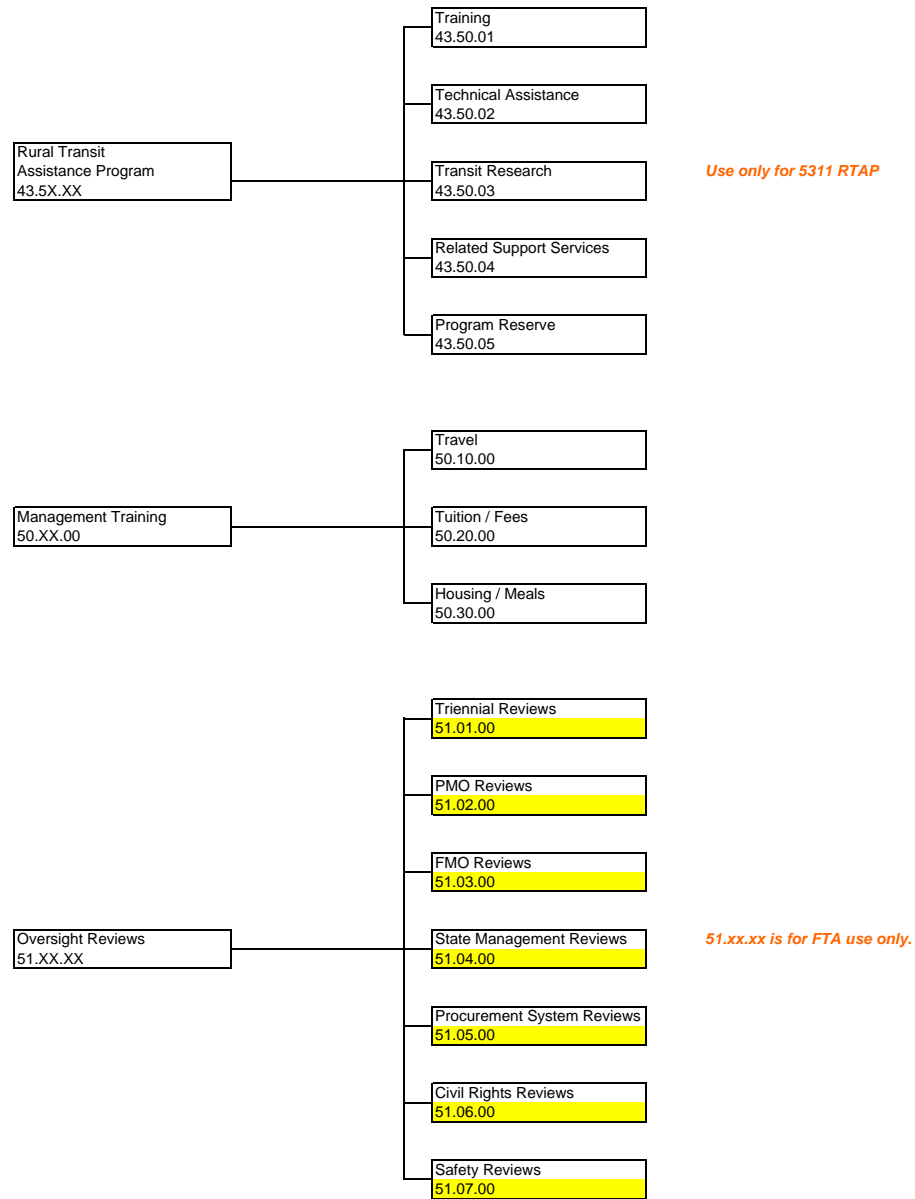
TRANSPORTATION ELECTRONIC AWARD & MANAGEMENT
ACTIVITY LINE ITEM CODE CHART
FOR PLANNING EXPENDITURES



**Federal Transit Administration  
Scope & Activity Line Item Codes  
Status: APPROVED**

Last Update 03/30/2006

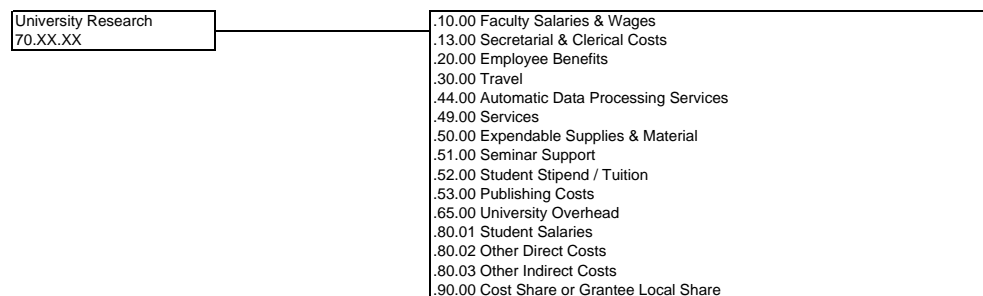
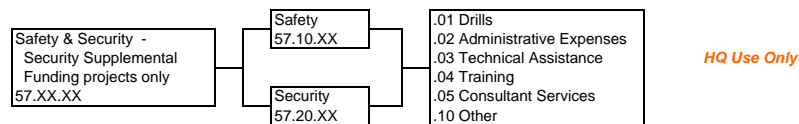
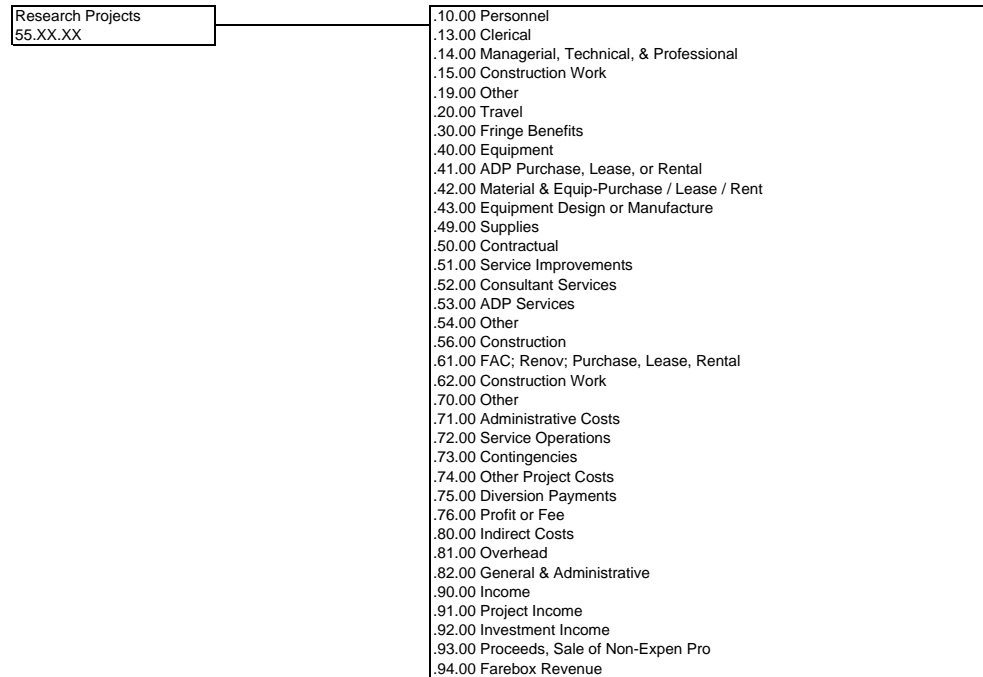
TRANSPORTATION ELECTRONIC AWARD & MANAGEMENT
ACTIVITY LINE ITEM CODE CHART
FOR RTAP AND MANAGEMENT TRAINING



**Federal Transit Administration  
Scope & Activity Line Item Codes  
Status: APPROVED**

Last Update 03/30/2006

TRANSPORTATION ELECTRONIC AWARD & MANAGEMENT
ACTIVITY LINE ITEM CODE CHART
FOR RESEARCH AND OTHER EXPENDITURES



**Federal Transit Administration  
Scope & Activity Line Item Codes**

Last Update 03/30/2006

**Status: APPROVED**

TRANSPORTATION ELECTRONIC AWARD & MANAGEMENT
ACTIVITY LINE ITEM CODE CHART
FOR RESEARCH AND OTHER EXPENDITURES

Non-Add Scope Codes  
99X-nn

991-nn – Security Expenditures other than 5302(a)(1)(J) items  
 992-nn – Tribal Projects  
 993-nn ITS - Fleet Management  
 994-nn ITS - Electronic Fare  
 995-nn ITS - Traveler Information  
 996-nn ADA / CAA Increased Federal Share  
     (i.e. Alternate Federal Share matches such as 90/10 and 83/17)  
 998-nn Transfer of Federal Equity  
 999-nn Contingency Projects

TRANSP. ELECTRONIC AWARD & MANGMNT
ALTERNATIVE FUEL TYPE CODES
FOR BUS PURCHASES

BD - BIODIESEL  
 BF - BUNKER FUEL  
 BP - BATTERY-POWERED  
 CN - COMPRESSED NATURAL GAS  
 D1 - No. 1 GRADE DIESEL FUEL  
 D2 - No. 2 GRADE DIESEL FUEL (Std.)  
 DL - DIESEL LOW-SULFUR  
 DM - DUAL MODE (DIESEL / ELEC)  
 DP - DIESEL (PARTICULATE TRAP)  
 EP - ELECTRIC TRACKLESS TROLLEY  
 ET - ETHANOL  
 FH - FUEL CELL, HYDROGEN FUEL  
 FR - FUEL CELL, ON-BUS REFORMER  
 GA - GASOLINE  
 HE - HYBRID ELECTRIC - DIESEL  
 HG - HYBRID ELECTRIC - NATURAL GAS  
 HO - HYBRID ELECTRIC - OTHER  
 LN - LIQUEFIED NATURAL GAS  
 LP - LIQUEFIED PETROLEUM GAS  
 MT - METHANOL  
 OR - OTHER