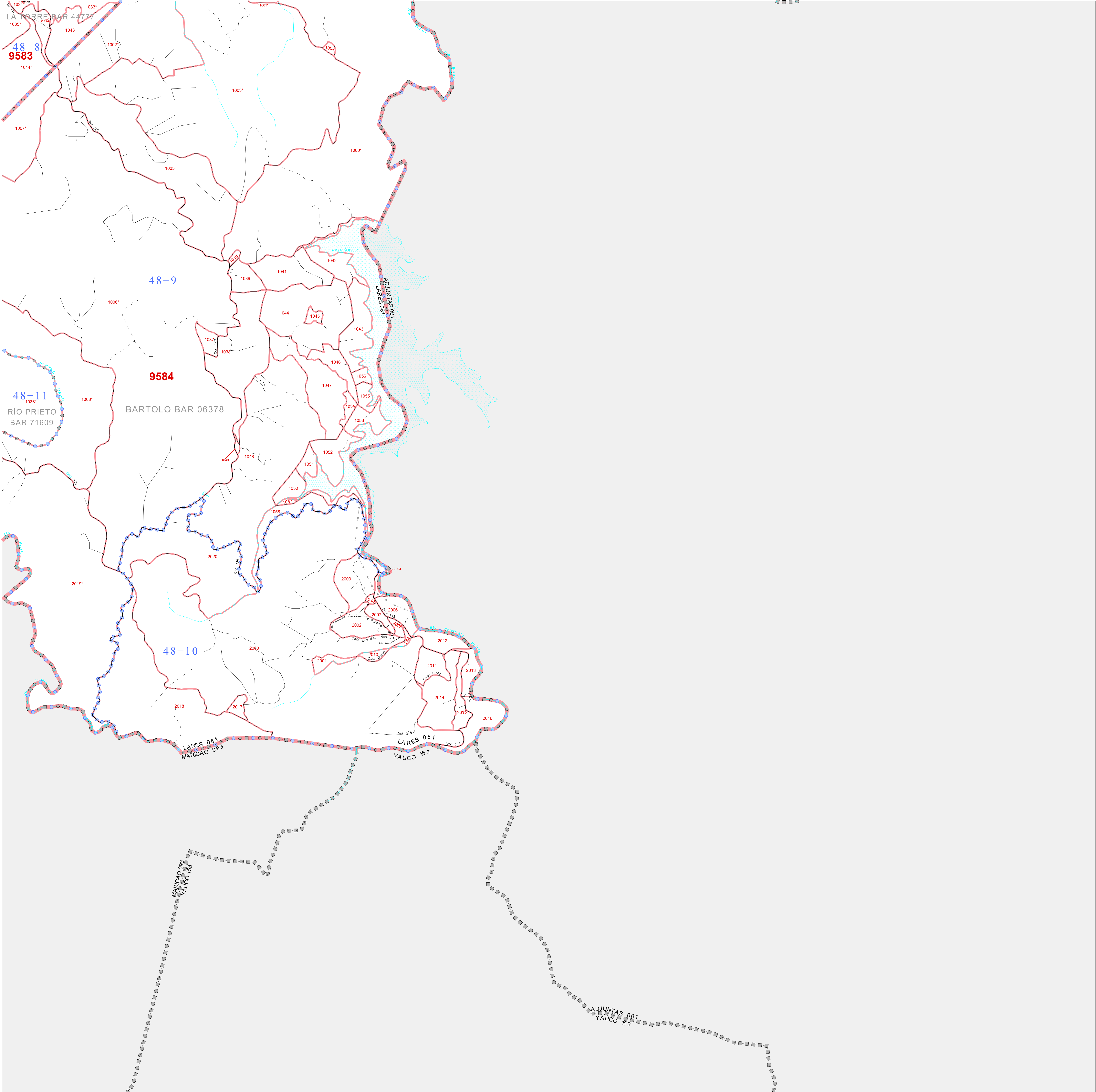


REDISTRICTING MUNICIPIO BLOCK MAP (CENSUS 2000)

18.227592N
66.777920W

18.227592N
66.864993W



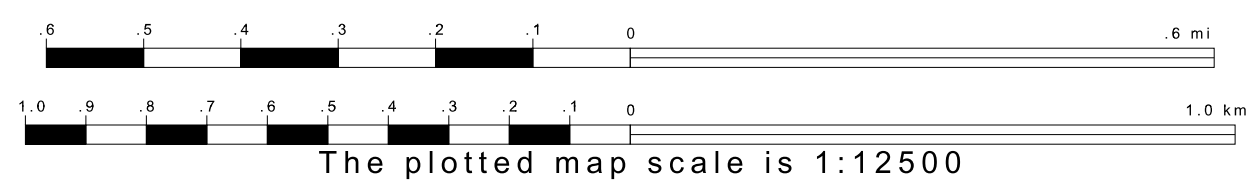
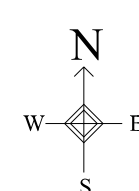
GEOGRAPHIC AREAS LEGEND

SYMBOL	NAME STYLE
☆☆☆☆	INTERNATIONAL
////	PUERTO RICO
■ ■ ■ ■	MUNICIPIO
● ● ● ●	BARRIO/BARRIO-PUEBLO
○ ○ ○ ○	Subbarrio
■ ■ ■ ■	Comunidad/Zona Urbana
● ● ● ●	Voting District
— — — —	Census Tract
— — — —	BLOCK
■ ■ ■ ■	Military
□ □ □ □	Inset
□ □ □ □	Out Area

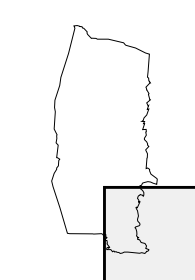
1 A * * following a VTD code indicates an actual voting district. Its absence indicates that the VTD is a pseudo-voting district or no information is available as to its status.
 2 A * * following a block number indicates that the block number is repeated elsewhere on the block.

16.144400N
66.864993W

16.144400N
66.777920W



Sheet Location within Municipio



Key to Adjacent Sheets

3	4
5	6

ST: Puerto Rico (72)
 COU: Lares (081)
 SHEET 6 OF 6 PARENT SHEETS



All legal boundaries and names are as of January 1, 2000. The boundaries shown on this map are for Census Bureau statistical data collection and tabulation purposes only; their depiction and designation for statistical purposes does not constitute a determination of jurisdictional authority or rights of ownership or entitlement. U.S. DEPARTMENT OF COMMERCE Economics and Statistics Administration U.S. Census Bureau