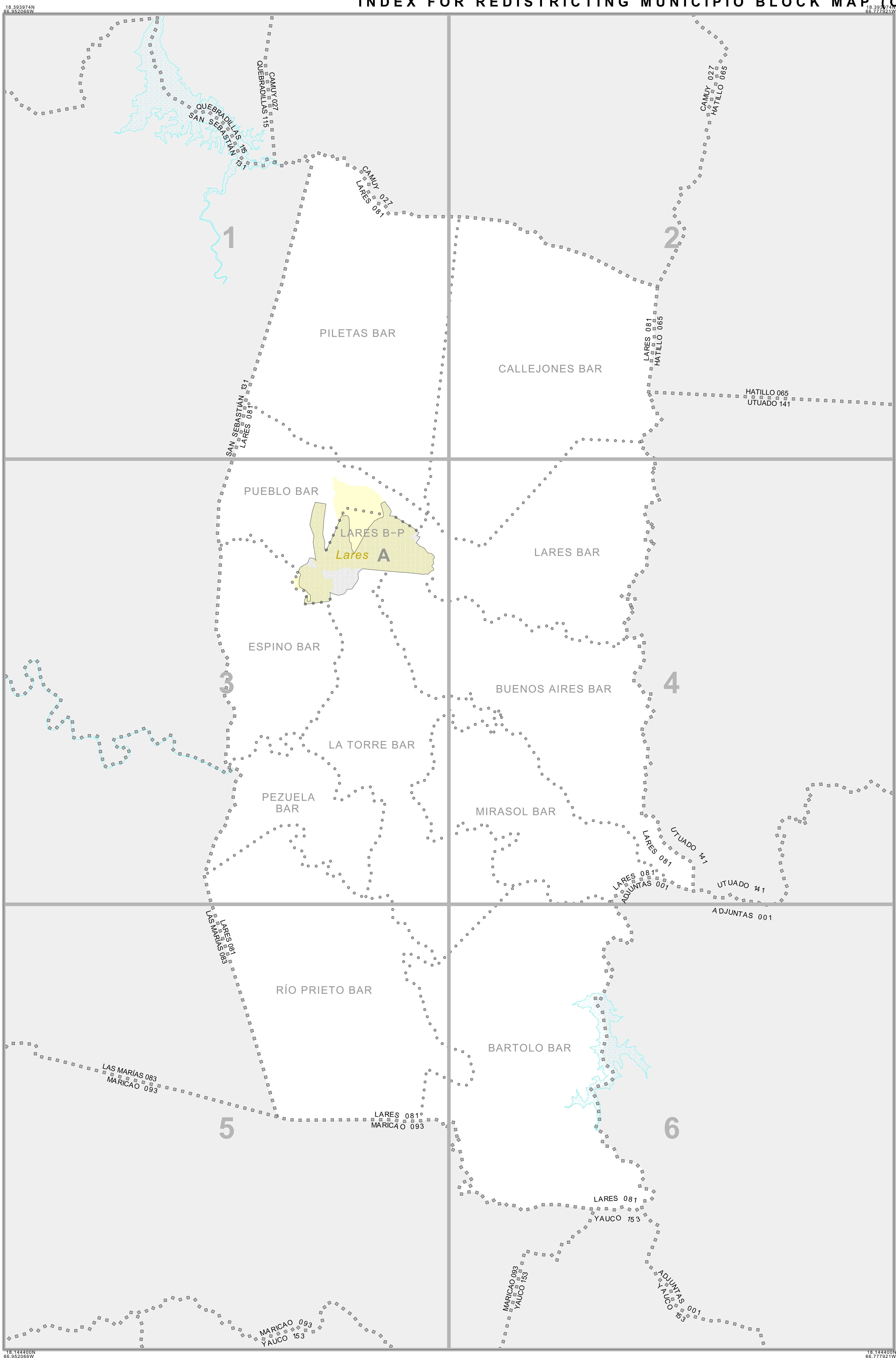


INDEX FOR REDISTRICTING MUNICIPIO BLOCK MAP (CENSUS 2000)



INDEX MAP LEGEND	
SYMBOL	NAME STYLE
*****	INTERNATIONAL
///////	PUERTO RICO
■■■■■	MUNICIPIO
●●●●●	BARRIO/BARRIO-PUEBLO
■■■■■	Comunidad/Zona Urbana
<input type="button" value="Inset"/> <input type="button" value="Out Area"/>	

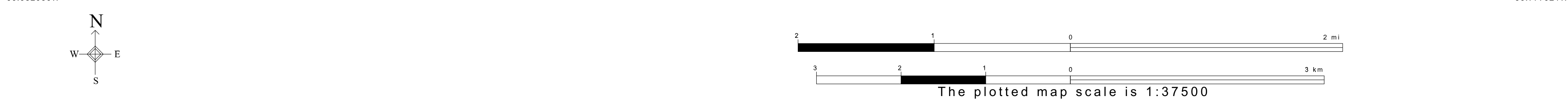
REDISTRICTING MUNICIPIO BLOCK MAP LEGEND (CENSUS 2000)			
SYMBOL DESCRIPTION	SYMBOL	NAME STYLE	
International	*****	UNITED STATES	
State or Statistically Equivalent Entity	///////	PUERTO RICO 72	
Municipio	■■■■■	COAMO 043	
Barrio or Barrio-Pueblo	●●●●●	ZANJA BAR 88508	
Subbarrio	○ ○ ○ ○ ○	La Cruz 40248	
Comunidad or Zona Urbana	■■■■■	San Juan 76770	
Voting District ¹	●●●●●	023*	
Census Tract	■■■■■	5702.01	
Block ²	■■■■■	1326*	

FEATURE	SYMBOL	FEATURE	SYMBOL
Major Highway	Corr. 401	Perennial Stream or Shoreline	Rio-Ronda
Secondary Road	Calle Limp.	Intermittent Stream or Shoreline	Quevedo-Paja
Joop Trail, Walkway, Stairway, or Ferry	---	Large River or Lake	Lago Dos Buecos
Railroad		Military Installation	Fort Buchanan
Pipelining or Power Line	---	Inset Area	A
Ridge, Fence, or Other Physical Feature	---	Outside Subject Area	
Property Line or Fence Line	---		
Nonvisible Boundary or Feature; Not Elsewhere Classified	---		

Where international, state, and/or municipio boundaries coincide, the map shows the boundary symbol for only the highest-ranking of these boundaries.

¹ An asterisk following a voting district code indicates an actual voting district. Its absence indicates that the VTD is a pseudo voting district or no information is available as to its status.

² An asterisk following a block number indicates that the block number is repeated elsewhere in the block.



All legal boundaries and names are as of January 1, 2000. The boundaries shown on this map are for Census Bureau statistical data collection and tabulation purposes only; their depiction and designation for statistical purposes does not constitute a determination of jurisdictional authority or rights of ownership or entitlement. U.S. DEPARTMENT OF COMMERCE Economics and Statistics Administration U.S. Census Bureau

ST: Puerto Rico (72)
 COU: Lares (081)
 INDEX MAP (TOTAL PARENT SHEETS 6 TOTAL INSET SHEETS 1)

