

REDISTRICTING MUNICIPIO BLOCK MAP (CENSUS 2000)

18 250027N
86 838258W

18 250027N
86 788607W



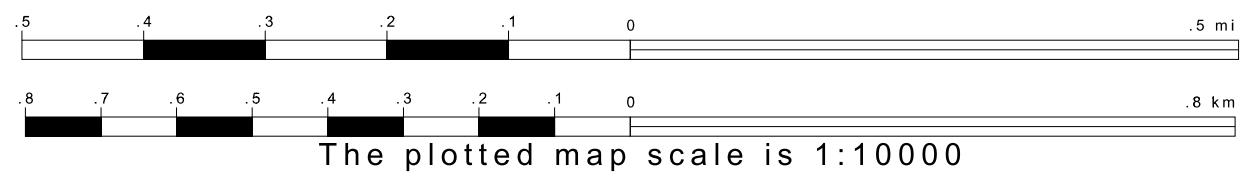
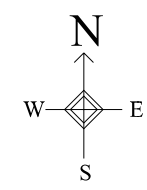
GEOGRAPHIC AREAS LEGEND

SYMBOL	NAME STYLE
☆☆☆☆	INTERNATIONAL
//////	PUERTO RICO
□□□□	MUNICIPIO
○○○○	BARRIO/BARRIO-PUEBLO
○	Subbarrio
■	Comunidad/Zona Urbana
●	Voting District
—	Census Tract
—	BLOCK
Military	Inset
	Out Area

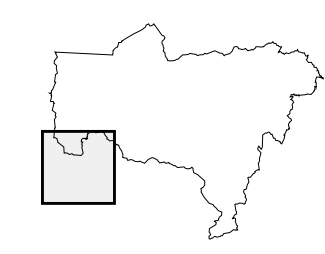
1 A * * following a VTD code indicates an actual voting district. Its absence indicates that the VTD is a pseudo voting district or no information is available as to its status.
2 A * * following a block number indicates that the block number is repeated elsewhere on the block.

18 183473N
86 838258W

18 183473N
86 788607W



Sheet Location within Municipio



Key to Adjacent Sheets

5	6
9	10

ST: Puerto Rico (72)
COU: Utuado (141)
SHEET 9 OF 13 PARENT SHEETS



All legal boundaries and names are as of January 1, 2000. The boundaries shown on this map are for Census Bureau statistical data collection and tabulation purposes only; their depiction and designation for statistical purposes does not constitute a determination of jurisdictional authority or rights of ownership or entitlement. U.S. DEPARTMENT OF COMMERCE Economics and Statistics Administration U.S. Census Bureau