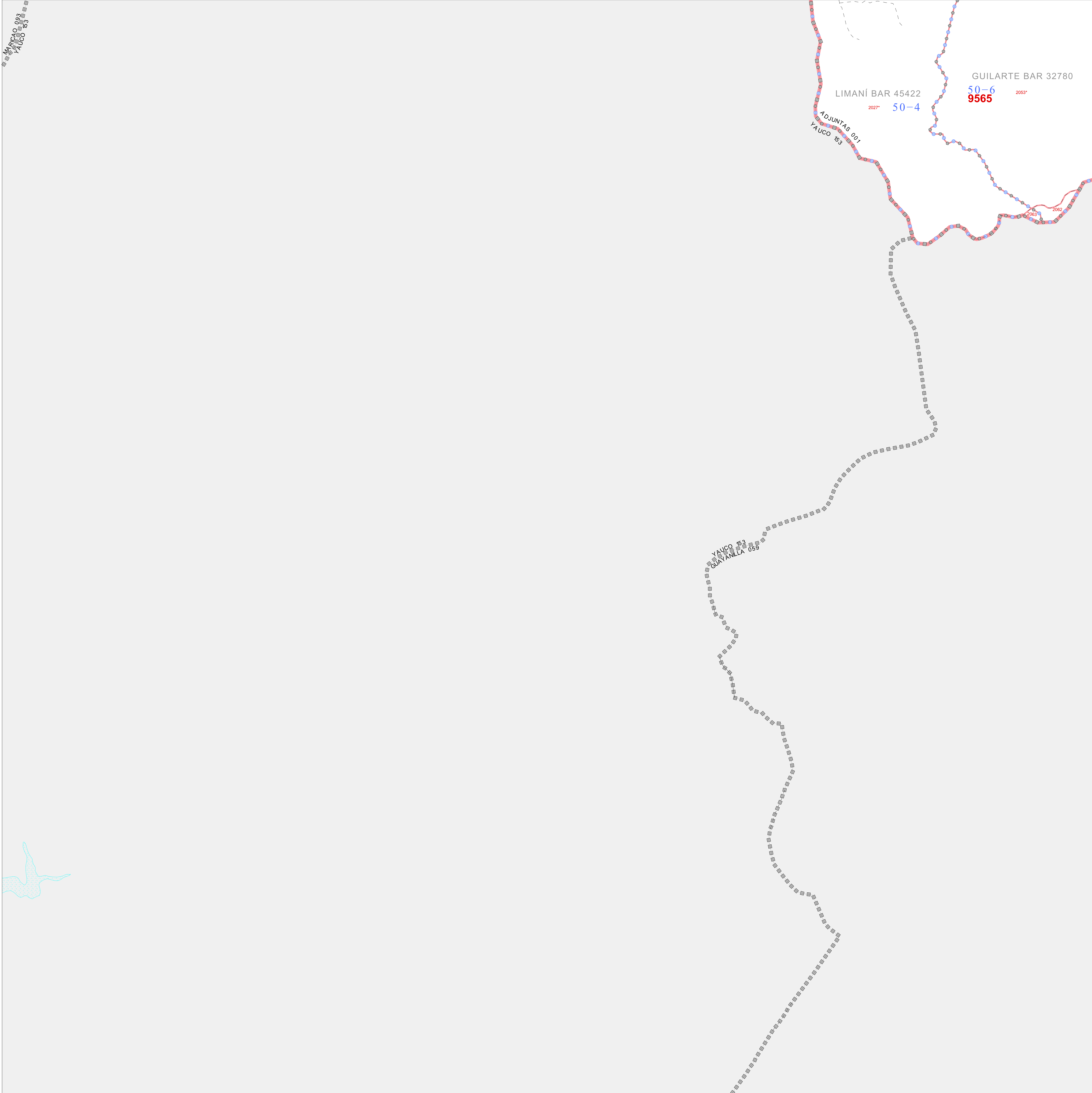


REDISTRICTING MUNICIPIO BLOCK MAP (CENSUS 2000)

18 147955N
86.855418W

18 147955N
86.785784W



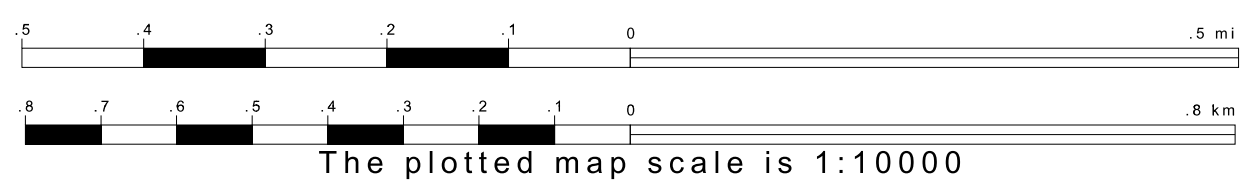
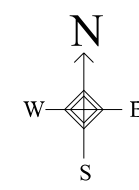
GEOGRAPHIC AREAS LEGEND

SYMBOL	NAME STYLE
☆☆☆☆	INTERNATIONAL
//////	PUERTO RICO
■■■■■	MUNICIPIO
●●●●●	BARRIO/BARRIO-PUEBLO
○	Subbarrio
Colorful Area	Comunidad/Zona Urbana
Blue Dashed Line	Voting District
Thick Red Line	Census Tract
Thin Red Line	BLOCK
Blue Dashed Box	Military
Inset Box	Inset
Out Area Box	Out Area

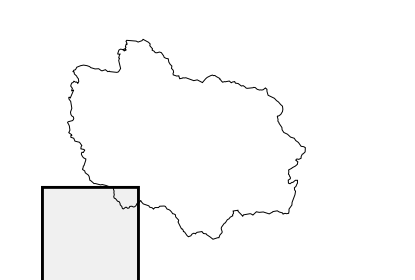
1 A * * following a VTD code indicates an actual voting district. Its absence indicates that the VTD is a pseudo voting district or no information is available as to its status.
 2 A * * following a block number indicates that the block number is repeated elsewhere on the block.

18 081341N
86.855418W

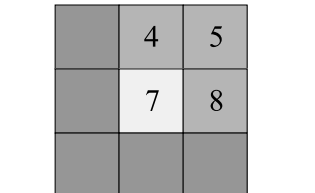
18 081341N
86.785784W



Sheet Location within Municipio



Key to Adjacent Sheets



ST: Puerto Rico (72)
 COU: Adjuntas (001)
 SHEET 7 OF 9 PARENT SHEETS



All legal boundaries and names are as of January 1, 2000.
 The boundaries shown on this map are for Census Bureau statistical data collection and tabulation purposes only; their depiction and designation for statistical purposes does not constitute a determination of jurisdictional authority or rights of ownership or entitlement.
 U.S. DEPARTMENT OF COMMERCE Economics and Statistics Administration U.S. Census Bureau