

REDISTRICTING MUNICIPIO BLOCK MAP (CENSUS 2000)

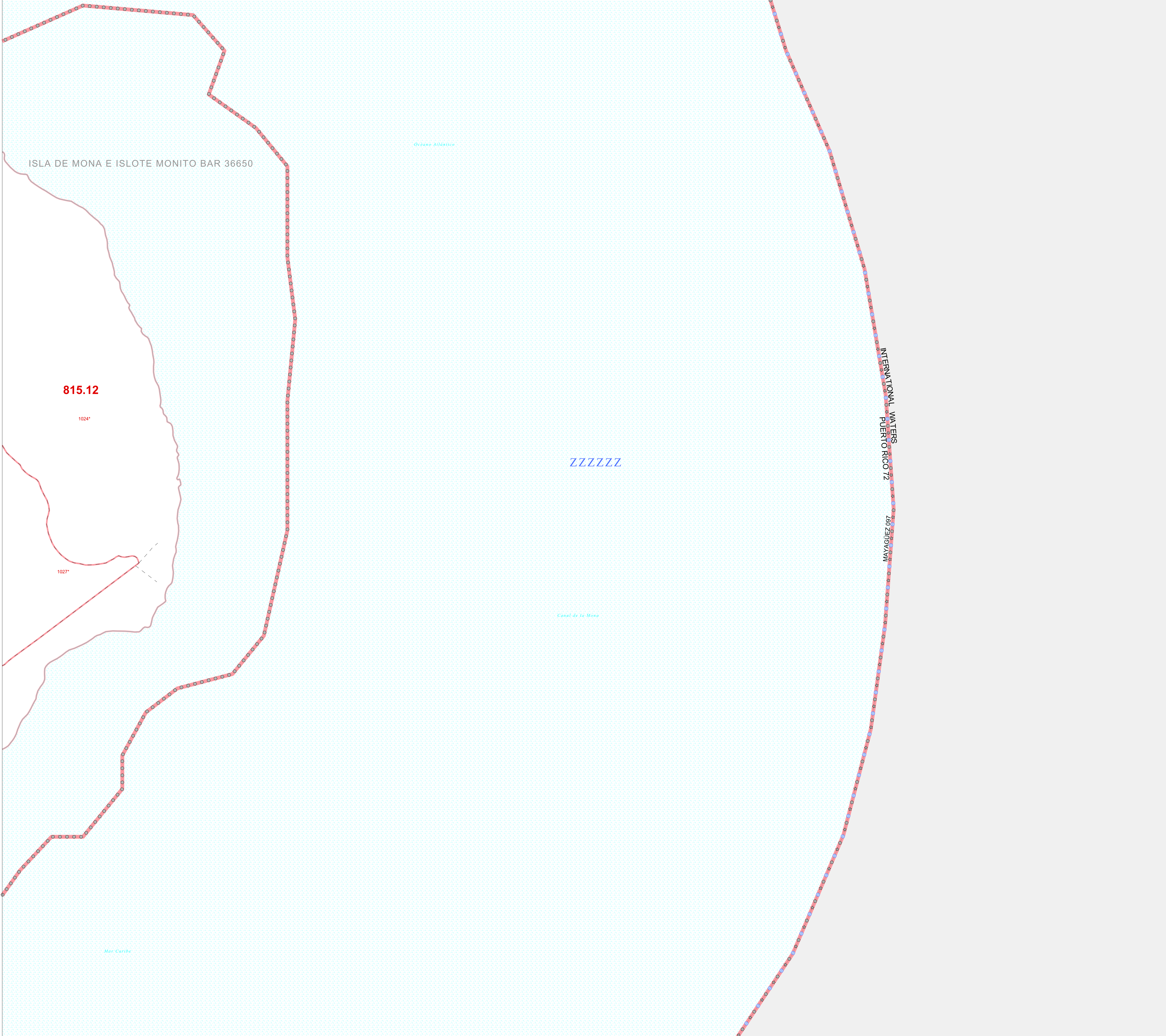
18 135832N
67 856259W

18 135832N
67 769211W

GEOGRAPHIC AREAS LEGEND

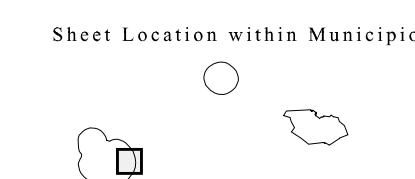
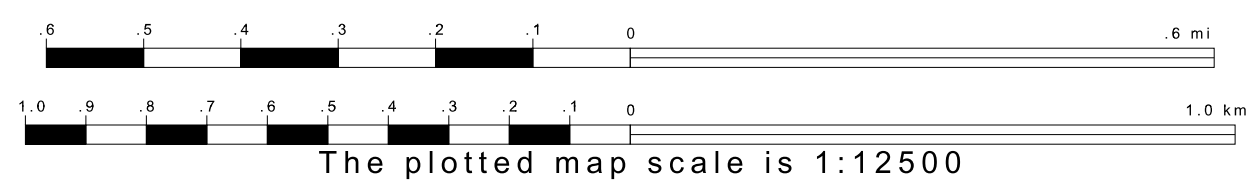
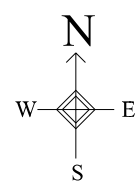
SYMBOL	NAME STYLE
☆☆☆☆	INTERNATIONAL
//////	PUERTO RICO
■■■■■	MUNICIPIO
●●●●●	BARRIO/BARRIO-PUEBLO
○●●●○	Subbarrio
■ ■ ■ ■ ■	Comunidad/Zona Urbana
●●●●●	Voting District
■■■■■	Census Tract
■■■■■	BLOCK

1 A * * * following a VTD code indicates an actual voting district. Its absence indicates that the VTD is a pseudo-voting district or no information is available as to its status.
 2 A * * * following a block number indicates that the block number is repeated elsewhere in the block.



18 052638N
67 856259W

18 052638N
67 769211W



Key to Adjacent Sheets

11	12
13	

ST: Puerto Rico (72)
COU: Mayagüez (097)
SHEET 12 OF 13 PARENT SHEETS



All legal boundaries and names are as of January 1, 2000. The boundaries shown on this map are for Census Bureau statistical data collection and tabulation purposes only; their depiction and designation for statistical purposes does not constitute a determination of jurisdictional authority or rights of ownership or entitlement. U.S. DEPARTMENT OF COMMERCE Economics and Statistics Administration U.S. Census Bureau