

# REDISTRICTING MUNICIPIO BLOCK MAP (CENSUS 2000)

18 219024N  
68.030355W

18 219024N  
67.943307W

**GEOGRAPHIC AREAS LEGEND**

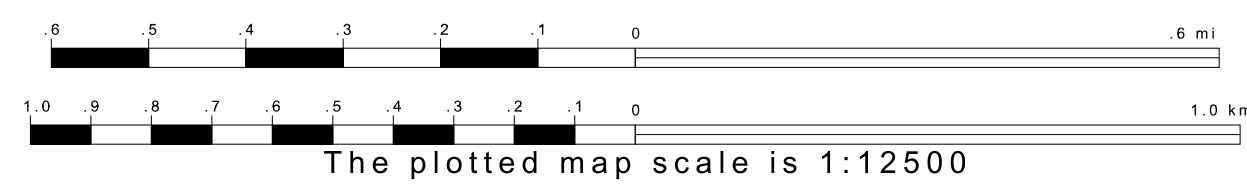
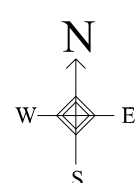
SYMBOL	NAME STYLE
☆☆☆☆	INTERNATIONAL
//////	PUERTO RICO
■■■■■	MUNICIPIO
●●●●●	BARRIO/BARRIO-PUEBLO
○●●●○	Subbarrio
■ ■ ■ ■ ■	Comunidad/Zona Urbana
●●●●●	Voting District
■■■■■	Census Tract
■■■■■	BLOCK

Military     Inset     Out Area

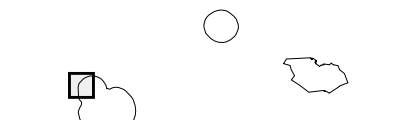
1 A \* \* \* following a VTD code indicates an actual voting district. Its absence indicates that the VTD is a pseudo-voting district or no information is available as to its status.  
 2 A \* \* \* following a block number indicates that the block number is repeated elsewhere on the block.

18 135832N  
68.030355W

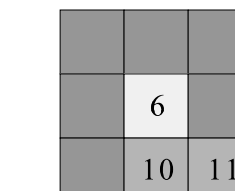
18 135832N  
67.943307W



Sheet Location within Municipio



Key to Adjacent Sheets



ST: Puerto Rico (72)  
COU: Mayagüez (097)  
SHEET 6 OF 13 PARENT SHEETS

