

REDISTRICTING MUNICIPIO BLOCK MAP (CENSUS 2000)

18 302217N
67 072827W

18 302217N
66 585770W

GEOGRAPHIC AREAS LEGEND

SYMBOL	NAME STYLE
☆☆☆☆	INTERNATIONAL
//////	PUERTO RICO
■■■■■	MUNICIPIO
●●●●●	BARRIO/BARRIO-PUEBLO
○ ○ ○ ○ ○	Subbarrio
■ ■ ■ ■ ■	Comunidad/Zona Urbana
● ● ● ● ●	Voting District
■■■■■	Census Tract
■■■■■	BLOCK

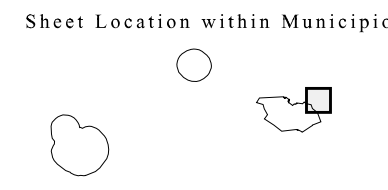
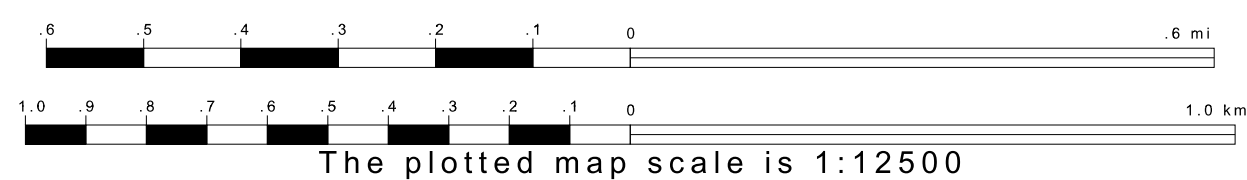
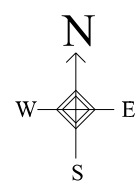
Military Inset Out Area

1 A * * following a VTD code indicates an actual voting district. Its absence indicates that the VTD is a pseudo-voting district or no information is available as to its status.
 2 A * * following a block number indicates that the block number is repeated elsewhere in the block.



18 219024N
67 072827W

18 219024N
66 585770W



Key to Adjacent Sheets

4	5
8	9

ST: Puerto Rico (72)
COU: Mayagüez (097)
SHEET 5 OF 13 PARENT SHEETS



All legal boundaries and names are as of January 1, 2000. The boundaries shown on this map are for Census Bureau statistical data collection and tabulation purposes only; their depiction and designation for statistical purposes does not constitute a determination of jurisdictional authority or rights of ownership or entitlement. U.S. DEPARTMENT OF COMMERCE Economics and Statistics Administration U.S. Census Bureau