

REDISTRICTING MUNICIPIO BLOCK MAP (CENSUS 2000)

18 104647N
86 268716W

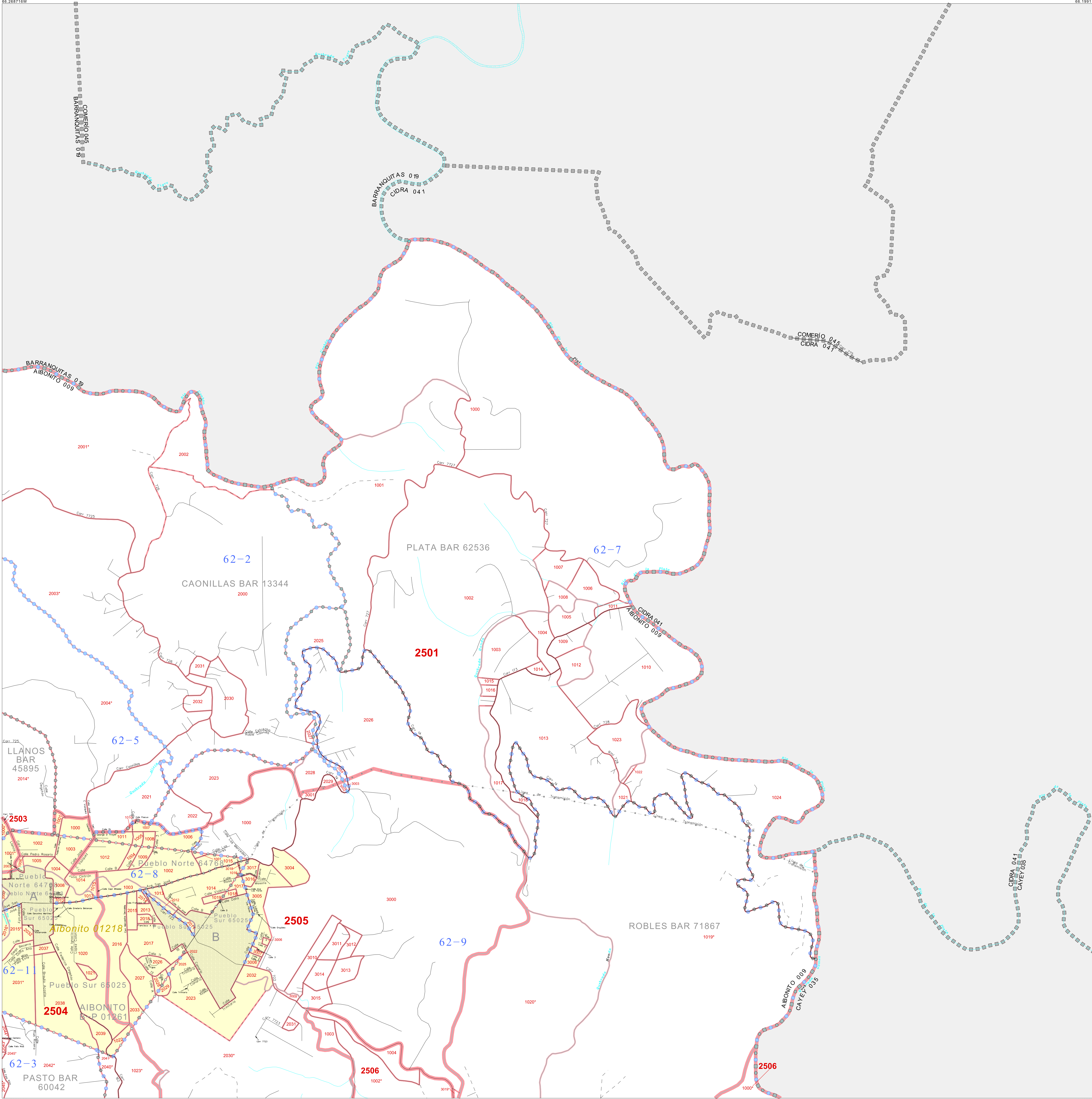
18 104647N
86 199114W

GEOGRAPHIC AREAS LEGEND

SYMBOL	NAME STYLE
*****	INTERNATIONAL
//////	PUERTO RICO
■■■■■	MUNICIPIO
●●●●●	BARRIO/BARRIO-PUEBLO
○ ○ ○ ○ ○	Subbarrio
■ ■ ■ ■ ■	Comunidad/Zona Urbana
● ● ● ● ●	Voting District
— — — — —	Census Tract
— — — — —	BLOCK*

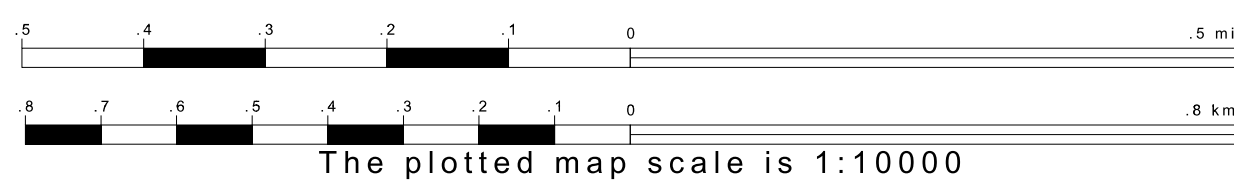
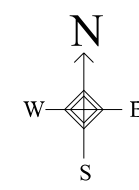
Military

1 A "*" following a VTD code indicates an actual voting district. Its absence indicates that the VTD is a pseudo-voting district or no information is available as to its status.
 2 A "*" following a block number indicates that the block number is repeated elsewhere on the block.

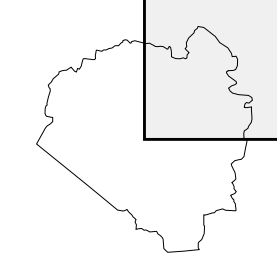


18 128092N
86 268716W

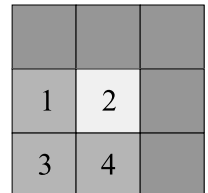
18 128092N
86 199114W



Sheet Location within Municipio



Key to Adjacent Sheets



ST: Puerto Rico (72)
 COU: Aibonito (009)
 SHEET 2 OF 4 PARENT SHEETS



All legal boundaries and names are as of January 1, 2000. The boundaries shown on this map are for Census Bureau statistical data collection and tabulation purposes only; their depiction and designation for statistical purposes does not constitute a determination of jurisdictional authority or rights of ownership or entitlement. U.S. DEPARTMENT OF COMMERCE Economics and Statistics Administration U.S. Census Bureau