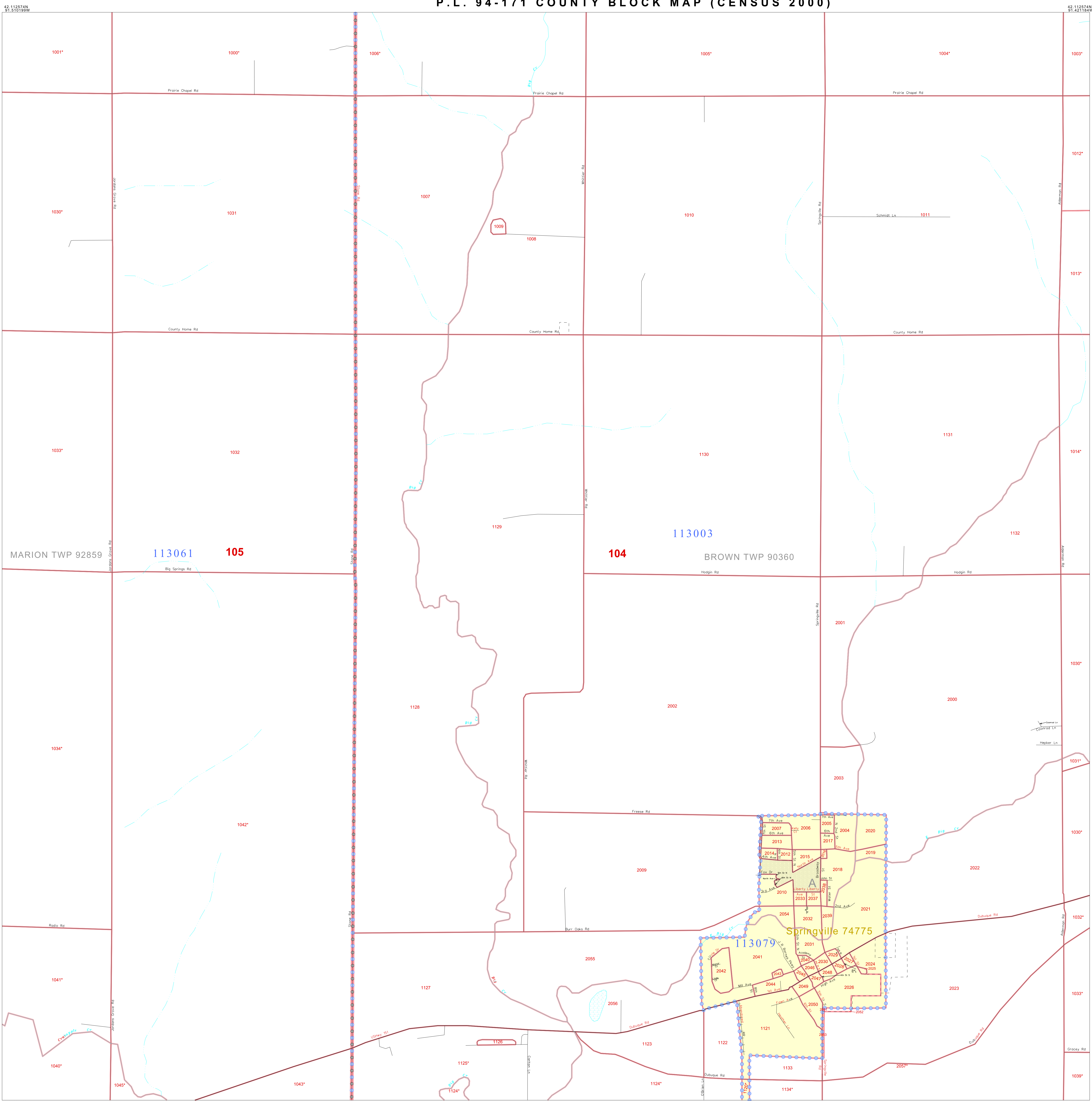


P.L. 94-171 COUNTY BLOCK MAP (CENSUS 2000)



**GEOGRAPHIC AREAS LEGEND**

SYMBOL	NAME STYLE
*****	<b>INTERNATIONAL</b>
*****	<b>AIR (FEDERAL)</b>
*****	<b>Trust Land</b>
//////	<b>STATE</b>
	<b>COUNTY</b>
o-o-o-o	<b>MINOR CIVIL DIV.</b>
Yellow	<b>Incorporated Place<sup>1</sup></b>
Light Yellow	<b>Census Designated Place<sup>1</sup></b>
Blue Dashed	<b>Corporate Offset Boundary</b>
Blue Dotted	<b>Voting District<sup>2</sup></b>
Red	<b>Census Tract</b>
Red	<b>BLOCK<sup>3</sup></b>

Military     Inset     Out Area

Abbreviation Reference: AIR = American Indian Reservation; Trust Land = Off-Reservation Trust Land

1 A " " following a place name indicates that the place is consecutive with a MCD. A " " indicates that the place differs from the place name.  
 2 A " " following a VTD code indicates an actual voting district. Its absence indicates that the VTD is a pseudo voting district or no information is available as to its status.  
 3 A " " following a block number indicates that the block number is repeated elsewhere in the block.

42 112574N 91.510199W

42 046257N 91.510199W

42 112574N 91.421184W

42 046257N 91.421184W

N  
 W     E     S

0 1 2 3 4 5 6 7 8 9 10 11 12 13 14 15 16 17 18 19 20 21 22 23 24 25 26 27 28 29 30 31 32 33 34 35 36 37 38 39 40 41 42 43 44 45 46 47 48 49 50 51 52 53 54 55 56 57 58 59 60 61 62 63 64 65 66 67 68 69 70 71 72 73 74 75 76 77 78 79 80 81 82 83 84 85 86 87 88 89 90 91 92 93 94 95 96 97 98 99 100

The plotted map scale is 1:10000

Sheet Location within County

Key to Adjacent Sheets

16	17	18
22	23	24
28	29	30