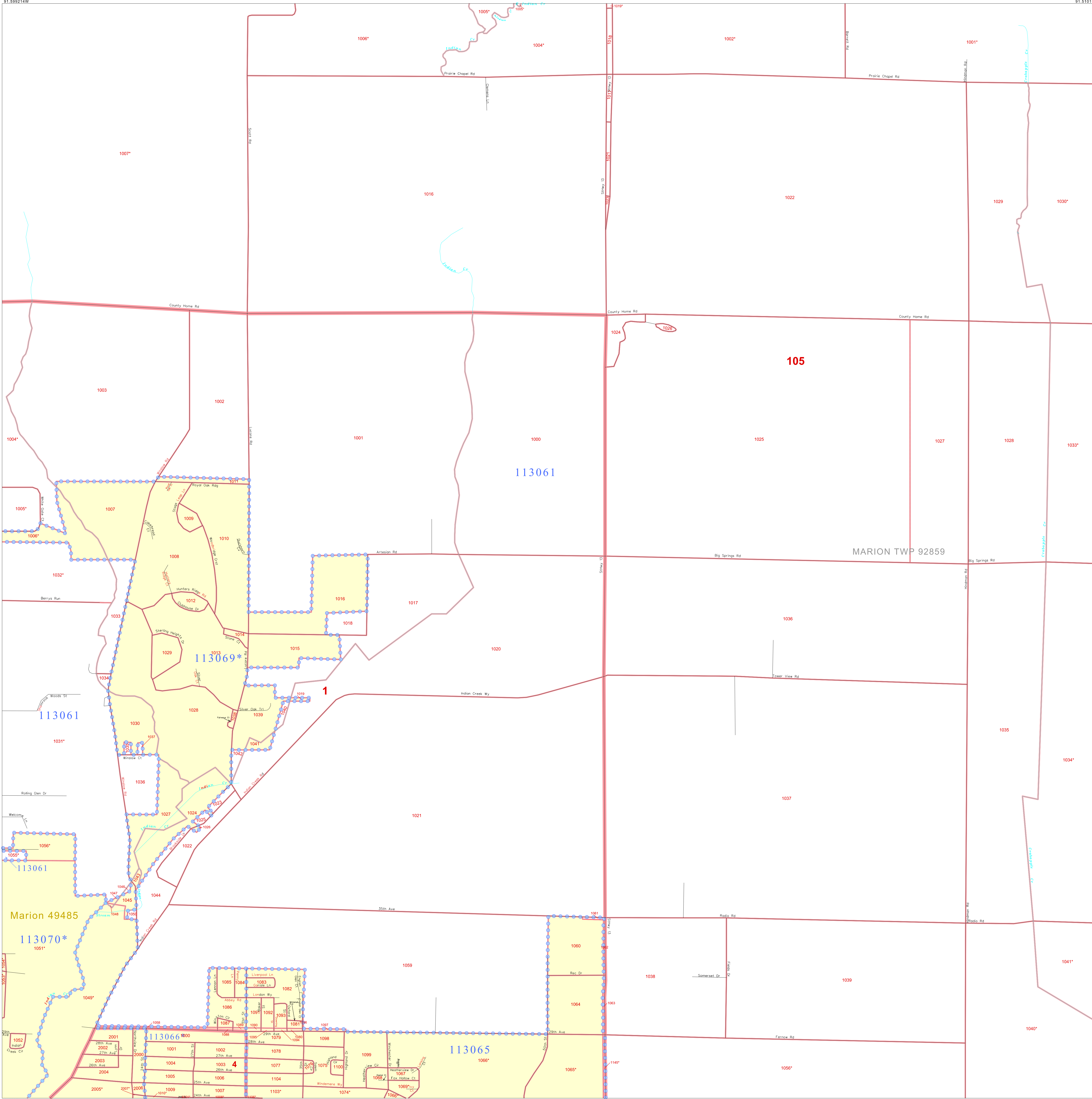


P. L. 94-171 COUNTY BLOCK MAP (CENSUS 2000)

42 112574N
91.599214W

42 112574N
91.510199W



GEOGRAPHIC AREAS LEGEND

SYMBOL	NAME STYLE
*****	INTERNATIONAL
*****	AIR (FEDERAL)
*****	Trust Land
*****	STATE
*****	COUNTY
*****	MINOR CIVIL DIV.
*****	Incorporated Place¹
*****	Census Designated Place¹
*****	Corporate Offset Boundary
*****	Voting District²
*****	Census Tract
*****	BLOCK³

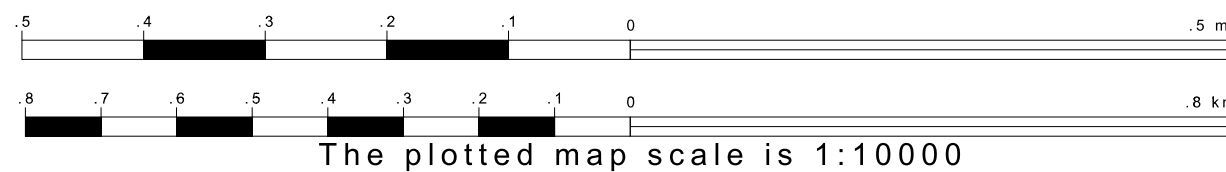
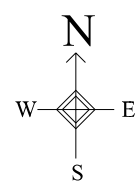
Military Inset Out Area

Abbreviation Reference: AIR = American Indian Reservation; Trust Land = Off-Reservation Trust Land

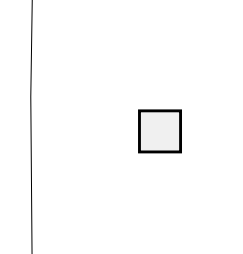
1 A "*" following a place name indicates that the place is coterminous with a MCD. A "-" indicates that the place differs from the MCD. In both cases, the MCD name is shown only when it differs from the place name.
 2 A "*" following a VTD code indicates an actual voting district. Its absence indicates that the VTD is a pseudo voting district or no information is available as to its status.
 3 A "*" following a block number indicates that the block number is repeated elsewhere in the block.

42 046257N
91.599214W

42 046257N
91.510199W



Sheet Location within County



Key to Adjacent Sheets

15	16	17
21	22	23
27	28	29

ST: Iowa (19)
 COU: Linn (113)
 SHEET 22 OF 42 PARENT SHEETS



All legal boundaries and names are as of January 1, 2000. The boundaries shown on this map are for Census Bureau statistical data collection and tabulation purposes only; their depiction and designation for statistical purposes does not constitute a determination of jurisdictional authority or rights of ownership or entitlement. U.S. DEPARTMENT OF COMMERCE Economics and Statistics Administration U.S. Census Bureau