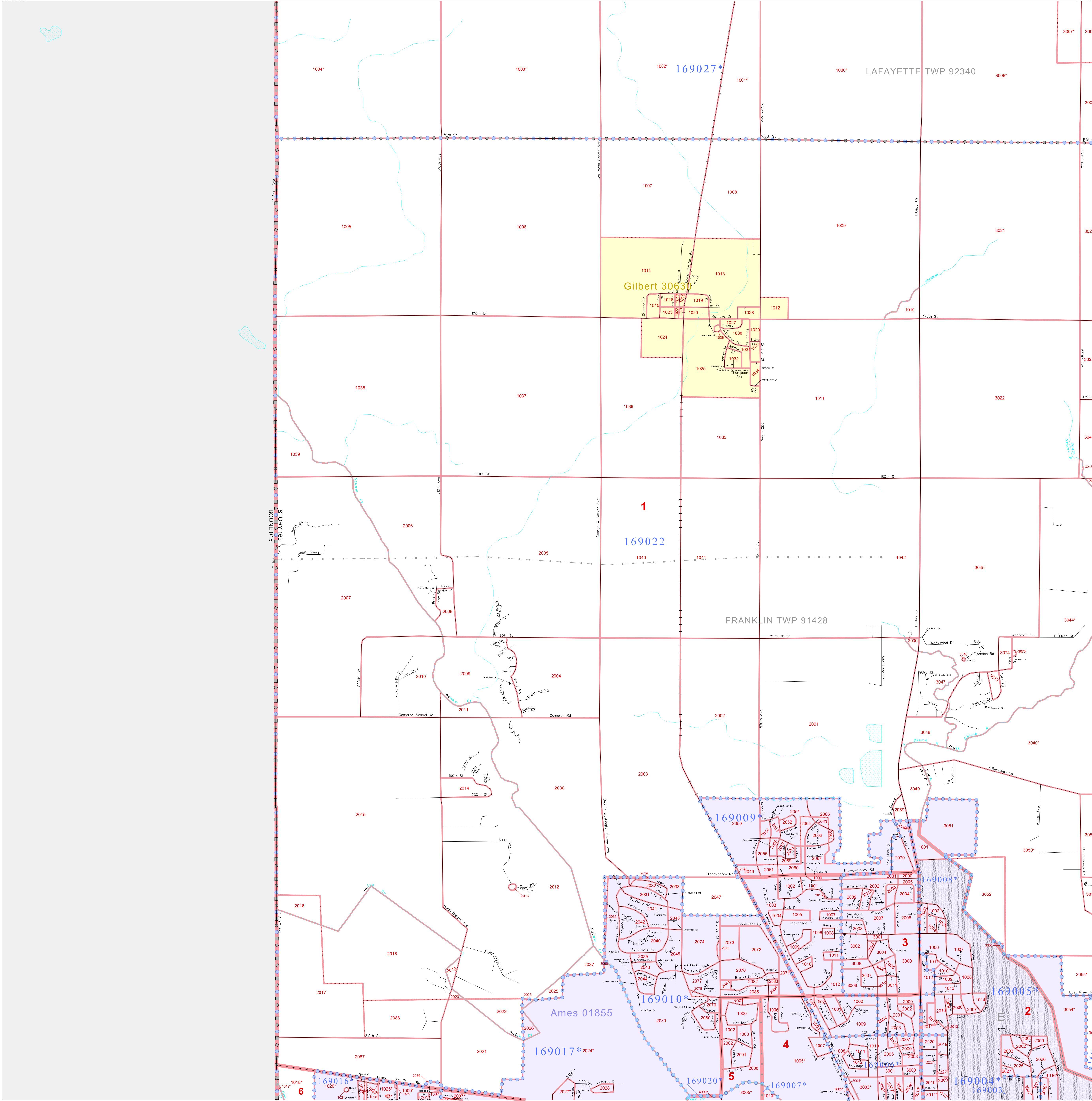


P.L. 94-171 COUNTY BLOCK MAP (CENSUS 2000)

42 135473N
93 732036W

42 135473N
93 998604W



GEOGRAPHIC AREAS LEGEND

SYMBOL	NAME STYLE
*****	INTERNATIONAL
*****	AIR (FEDERAL)
*****	Trust Land
*****	STATE
*****	COUNTY
*****	MINOR CIVIL DIV.
*****	Incorporated Place ¹
*****	Census Designated Place ¹
*****	Corporate Offset Boundary
*****	Voting District ²
*****	Census Tract
*****	BLOCK ³

Military Inset Out Area

Abbreviation Reference: AIR = American Indian Reservation; Trust Land = Off-Reservation Trust Land

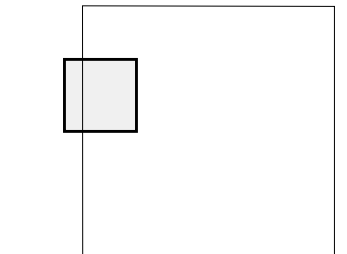
1 A "*" following a place name indicates that the place is coextensive with a MCD. A "-" indicates that the place differs from the MCD. In both cases, the MCD name is shown only when it differs from the place name.
 2 A "*" following a VTD code indicates an actual voting district. Its absence indicates that the VTD is a pseudo voting district or no information is available as to its status.
 3 A "*" following a block number indicates that the block number is repeated elsewhere in the block.

42 035998N
93 732036W

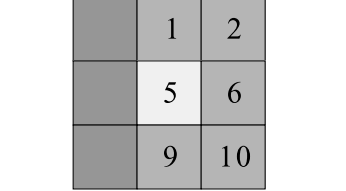
42 035998N
93 998604W



Sheet Location within County



Key to Adjacent Sheets



ST: Iowa (19)
 COU: Story (169)
 SHEET 5 OF 16 PARENT SHEETS



All legal boundaries and names are as of January 1, 2000. The boundaries shown on this map are for Census Bureau statistical data collection and tabulation purposes only; their depiction and designation for statistical purposes does not constitute a determination of jurisdictional authority or rights of ownership or entitlement. U.S. DEPARTMENT OF COMMERCE Economics and Statistics Administration U.S. Census Bureau