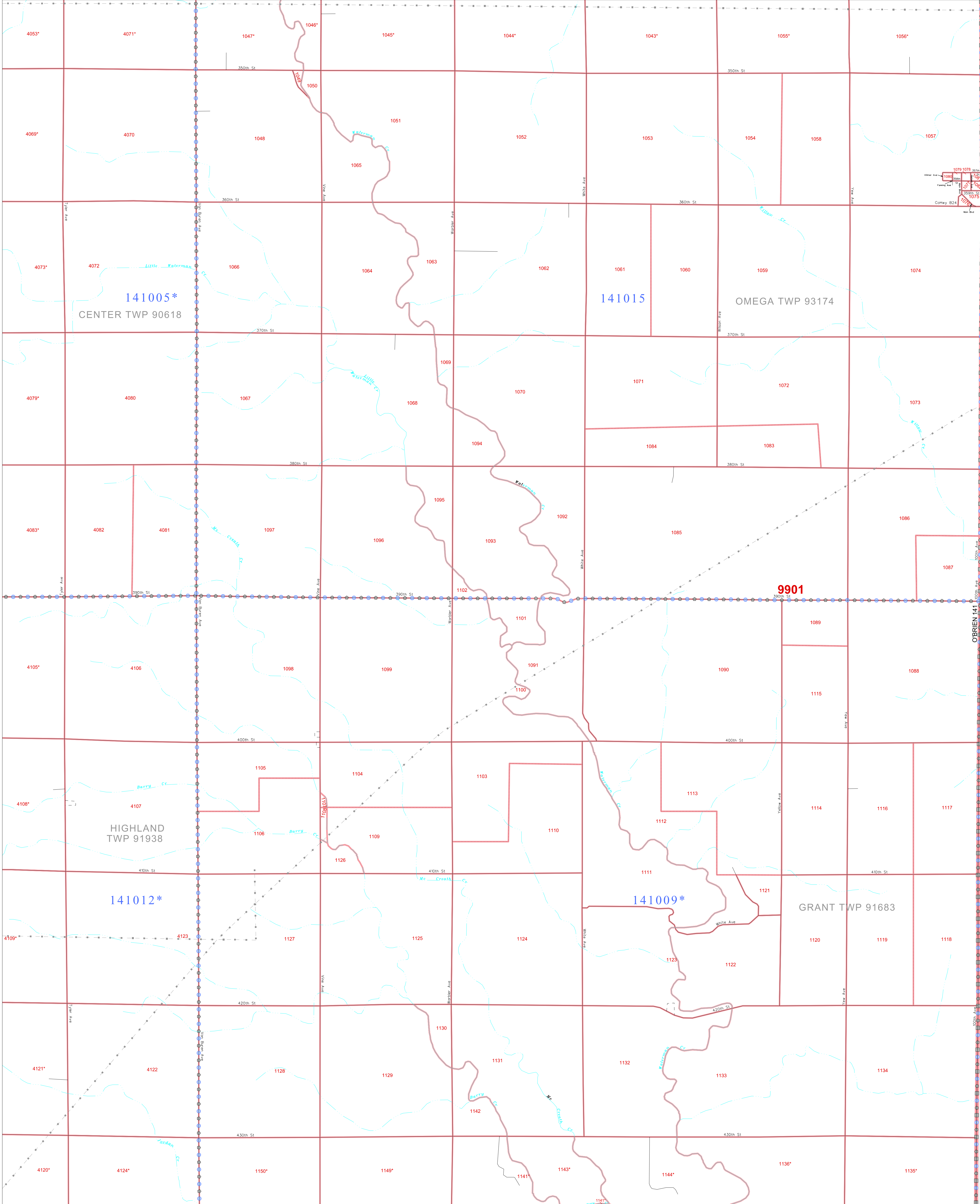


P.L. 94-171 COUNTY BLOCK MAP (CENSUS 2000)

43 150147N
95 534636W

43 150147N
95 534636W



GEOGRAPHIC AREAS LEGEND

SYMBOL	NAME STYLE
*****	INTERNATIONAL
*****	AIR (FEDERAL)
*****	Trust Land
*****	STATE
*****	COUNTY
*****	MINOR CIVIL DIV.
*****	Incorporated Place ¹
*****	Census Designated Place ¹
*****	Corporate Offset Boundary
*****	Voting District ²
*****	Census Tract
*****	BLOCK ³

Abbreviation Reference: AIR = American Indian Reservation; Trust Land = Off-Reservation Trust Land

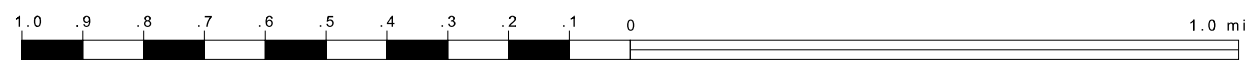
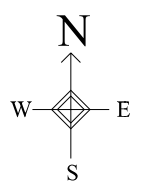
1 A "*" following a place name indicates that the place is coterminous with a MCD. A "-" indicates that the place is also a false MCD. In both cases, the MCD name is shown only when it differs from the place name.

2 A "*" following a VTD code indicates an actual voting district. Its absence indicates that the VTD is a pseudo voting district or no information is available as to its status.

3 A "*" following a block number indicates that the block number is repeated elsewhere in the block.

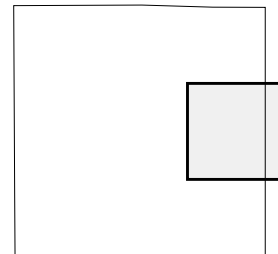
43 017637N
95 534636W

43 017637N
95 534636W



The plotted map scale is 1:20000

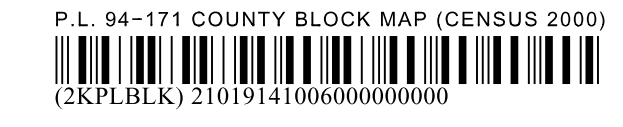
Sheet Location within County



Key to Adjacent Sheets

2	3
5	6
8	9

ST: Iowa (19)
COU: O'Brien (141)
SHEET 6 OF 9 PARENT SHEETS



All legal boundaries and names are as of January 1, 2000. The boundaries shown on this map are for Census Bureau statistical data collection and tabulation purposes only; their depiction and designation for statistical purposes does not constitute a determination of jurisdictional authority or rights of ownership or entitlement. U.S. DEPARTMENT OF COMMERCE Economics and Statistics Administration U.S. Census Bureau