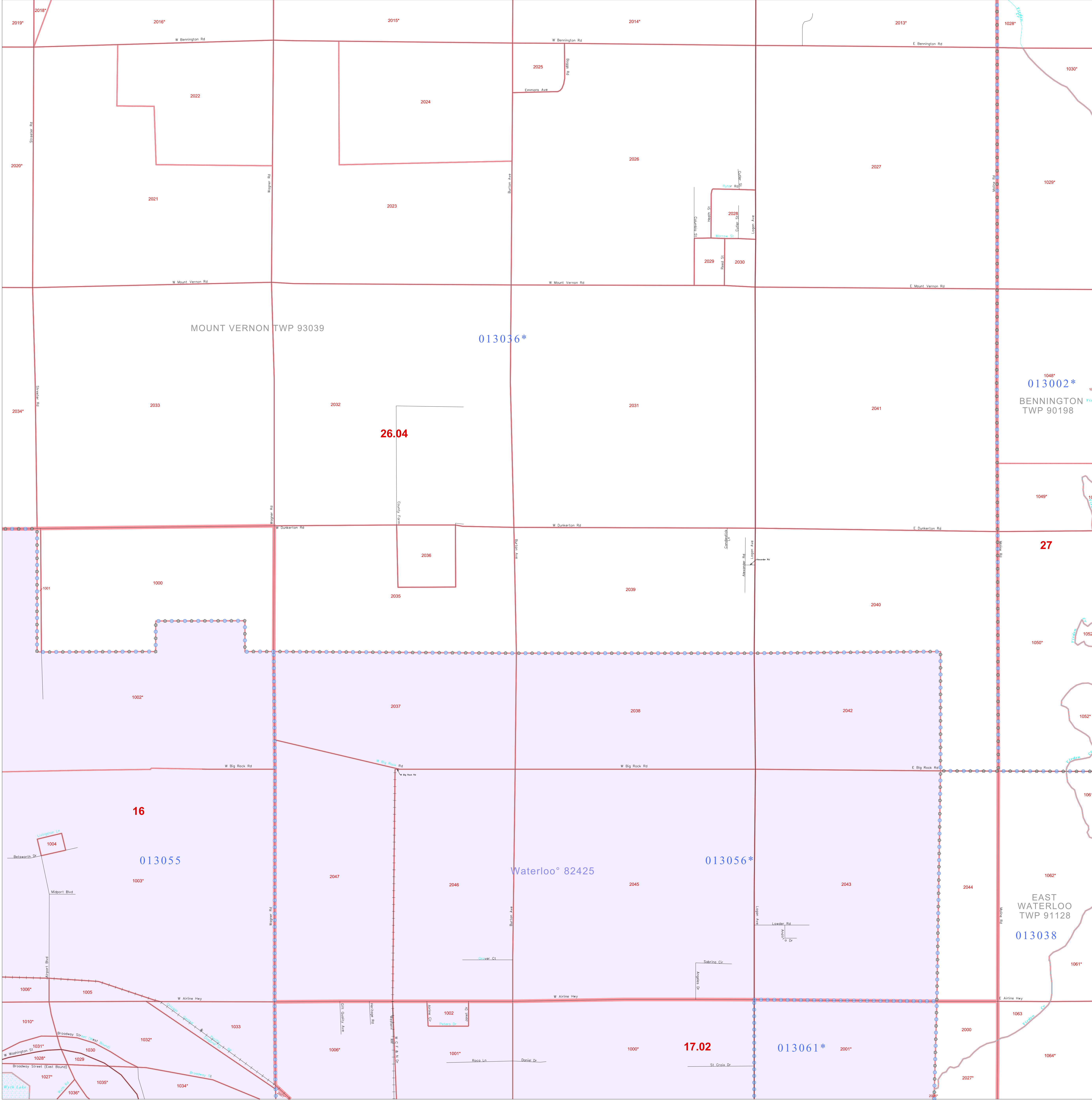


P. L. 94-171 COUNTY BLOCK MAP (CENSUS 2000)

42 602392N  
92.399040W

42 602392N  
92.309474W



**GEOGRAPHIC AREAS LEGEND**

SYMBOL	NAME STYLE
*****	INTERNATIONAL
*****	AIR (FEDERAL)
*****	Trust Land
*****	STATE
*****	COUNTY
*****	MINOR CIVIL DIV.
*****	Incorporated Place <sup>1</sup>
*****	Census Designated Place <sup>1</sup>
*****	Corporate Offset Boundary
*****	Voting District <sup>2</sup>
*****	Census Tract
*****	BLOCK <sup>3</sup>

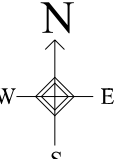
Military     Inset     Out Area

Abbreviation Reference: AIR = American Indian Reservation; Trust Land = Gift/Reservation Trust Land

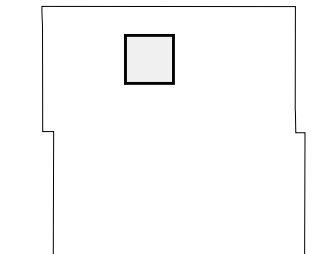
1 A "\*" following a place name indicates that the place is coterminous with a MCD. A "-" indicates that the place differs from the MCD. In both cases, the MCD name is shown only when it differs from the place name.  
 2 A "\*" following a VTD code indicates an actual voting district. Its absence indicates that the VTD is a pseudo voting district or no information is available as to its status.  
 3 A "\*" following a block number indicates that the block number is repeated elsewhere in the block.

42 536880N  
92.399040W

42 536880N  
92.309474W



Sheet Location within County



Key to Adjacent Sheets

2	3	4
8	9	10
14	15	16

ST: Iowa (19)  
COU: Black Hawk (013)  
SHEET 9 OF 36 PARENT SHEETS



All legal boundaries and names are as of January 1, 2000. The boundaries shown on this map are for Census Bureau statistical data collection and tabulation purposes only; their depiction and designation for statistical purposes does not constitute a determination of jurisdictional authority or rights of ownership or entitlement. U.S. DEPARTMENT OF COMMERCE Economics and Statistics Administration U.S. Census Bureau