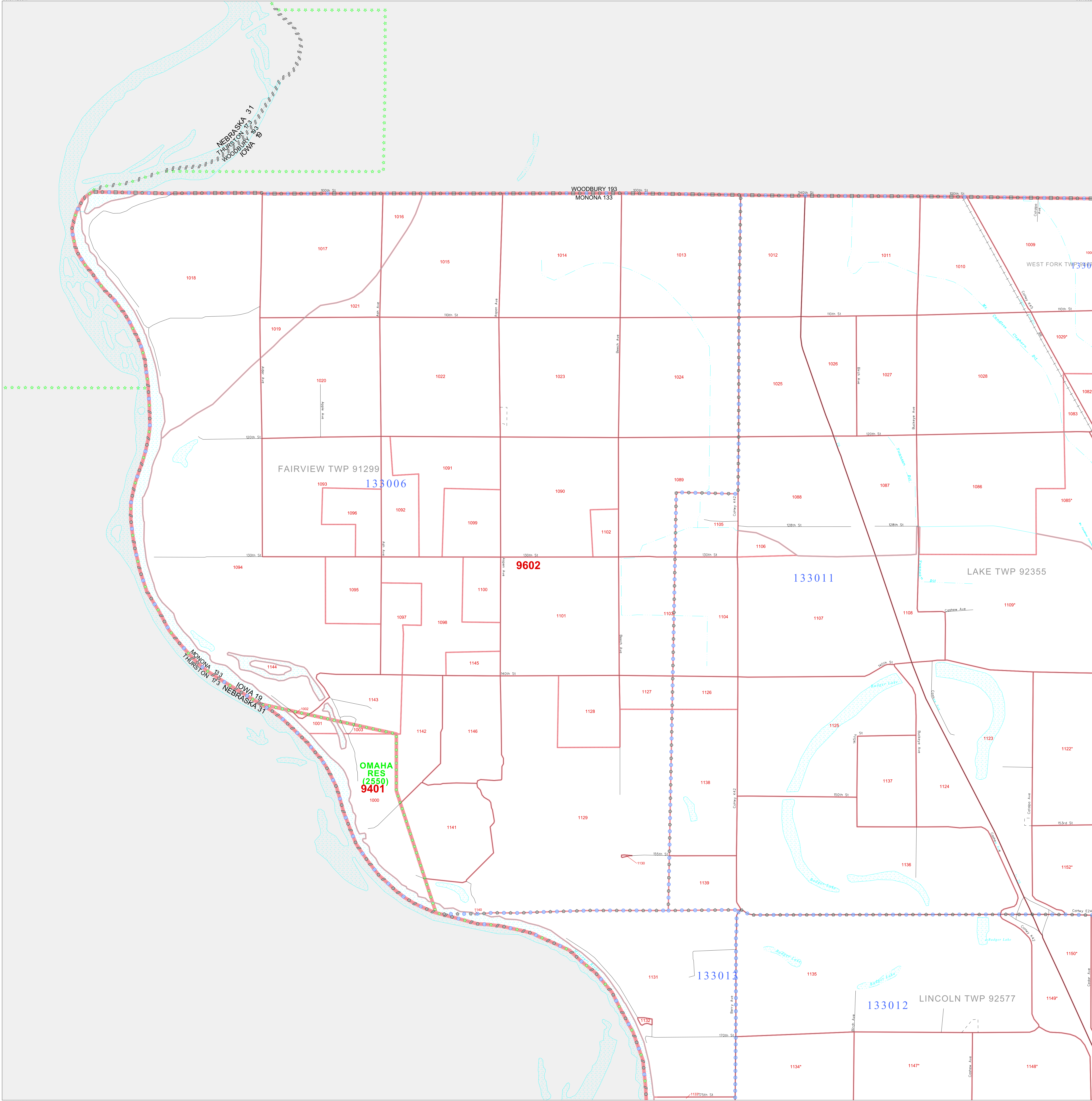


P. L. 94-171 COUNTY BLOCK MAP (CENSUS 2000)

42 23904N  
96 371200W

42 23904N  
96 193200W



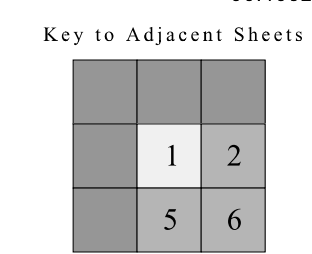
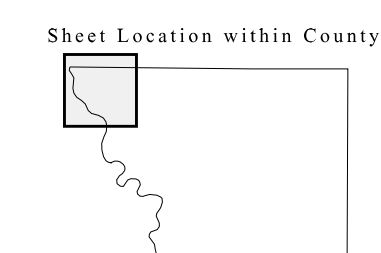
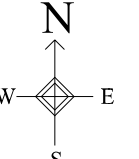
**GEOGRAPHIC AREAS LEGEND**

SYMBOL	NAME STYLE
*****	<b>INTERNATIONAL</b>
*****	<b>AIR (FEDERAL)</b>
*****	<b>Trust Land</b>
*****	<b>STATE</b>
*****	<b>COUNTY</b>
*****	<b>MINOR CIVIL DIV.</b>
*****	<b>Incorporated Place*</b>
*****	<b>Census Designated Place*</b>
*****	<b>Corporate Offset Boundary</b>
*****	<b>Voting District*</b>
*****	<b>Census Tract</b>
*****	<b>BLOCK*</b>

Military  Inset  Out Area  
 Abbreviation Reference: AIR = American Indian Reservation; Trust Land = Off-Reservation Trust Land  
 1 A \* \* following a place name indicates that the place is coterminous with a MCD. A \* \* indicates that the place is also a false MCD. In both cases, the MCD name is shown only when it differs from the place name.  
 2 A \* \* following a VTD code indicates an actual voting district. Its absence indicates that the VTD is a pseudo voting district or no information is available as to its status.  
 3 A \* \* following a block number indicates that the block number is repeated elsewhere in the block.

42 109400N  
96 371200W

42 109400N  
96 193200W



ST: Iowa (19)  
 COU: Monona (133)  
 SHEET 1 OF 11 PARENT SHEETS



All legal boundaries and names are as of January 1, 2000. The boundaries shown on this map are for Census Bureau statistical data collection and tabulation purposes only; their depiction and designation for statistical purposes does not constitute a determination of jurisdictional authority or rights of ownership or entitlement. U.S. DEPARTMENT OF COMMERCE Economics and Statistics Administration U.S. Census Bureau