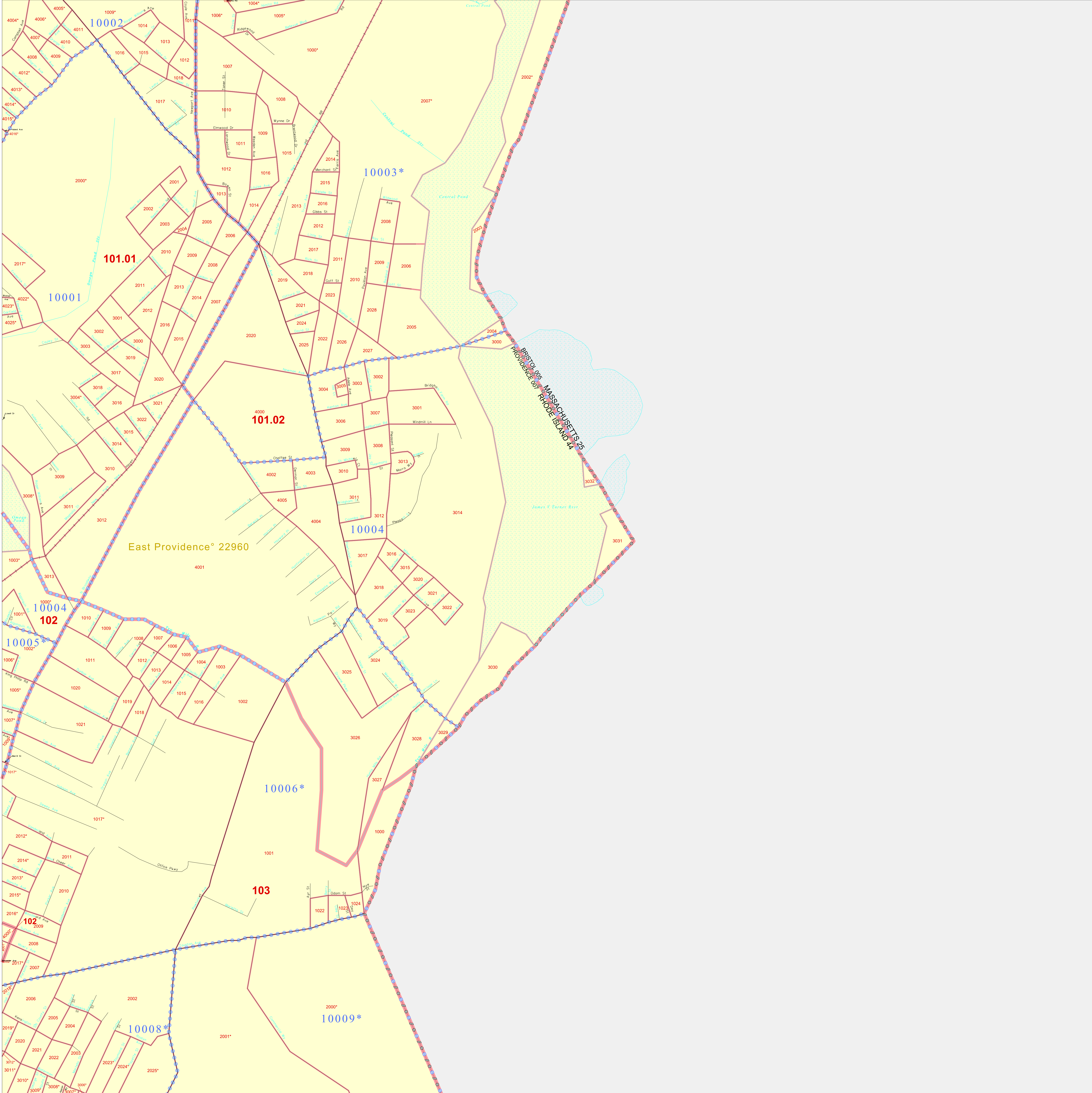


41.853528N
71.963319W

41.853528N
71.914520W



GEOGRAPHIC AREAS LEGEND

SYMBOL	NAME STYLE
☆☆☆☆☆	INTERNATIONAL
*****	AIR (FEDERAL)
///////	STATE
	COUNTY
■■■■■	MINOR CIVIL DIV ¹
■■■■■	Incorporated Place ¹
■■■■■	Census Designated Place ¹
.....	Corporate Offset Boundary
.....	Voting District ²
.....	Census Tract
.....	BLOCK ³

Military: Inset Out Area

Abbreviation Reference: AIR = American Indian Reservation

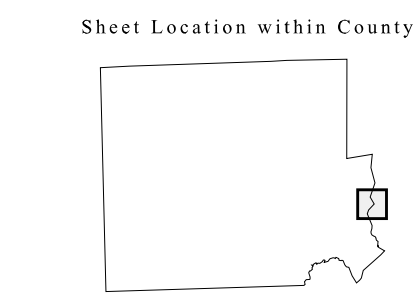
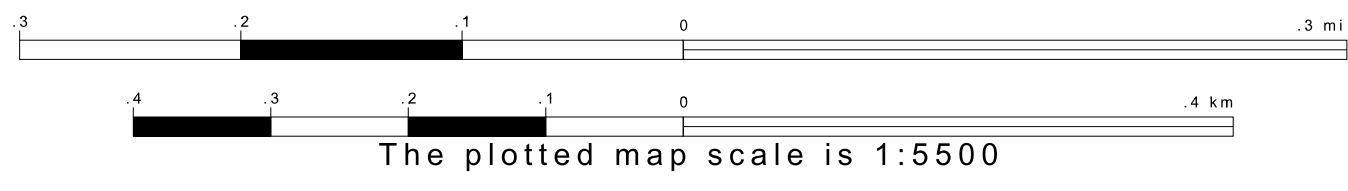
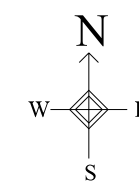
¹ A "*" following a place name indicates that the place is coterminous with a MCD. A "-" indicates that the place is also a false MCD. In both cases, the MCD name is shown only when it differs from the place name.

² A "*" following a VTD code indicates an actual voting district. Its absence indicates that the VTD is a pseudo-voting district or no information is available as to its status.

³ A "*" following a block number indicates that the block number is repeated elsewhere in the block.

41.817053N
71.963319W

41.817053N
71.914520W



Key to Adjacent Sheets

46	47
56	57
66	67

ST: Rhode Island (44)
 COU: Providence (007)
 SHEET 57 OF 85 PARENT SHEETS



All legal boundaries and names are as of January 1, 2000.
 The boundaries shown on this map are for Census Bureau statistical data collection and tabulation purposes only; their depiction and designation for statistical purposes does not constitute a determination of jurisdictional authority or rights of ownership or entitlement.
 U.S. DEPARTMENT OF COMMERCE Economics and Statistics Administration U.S. Census Bureau