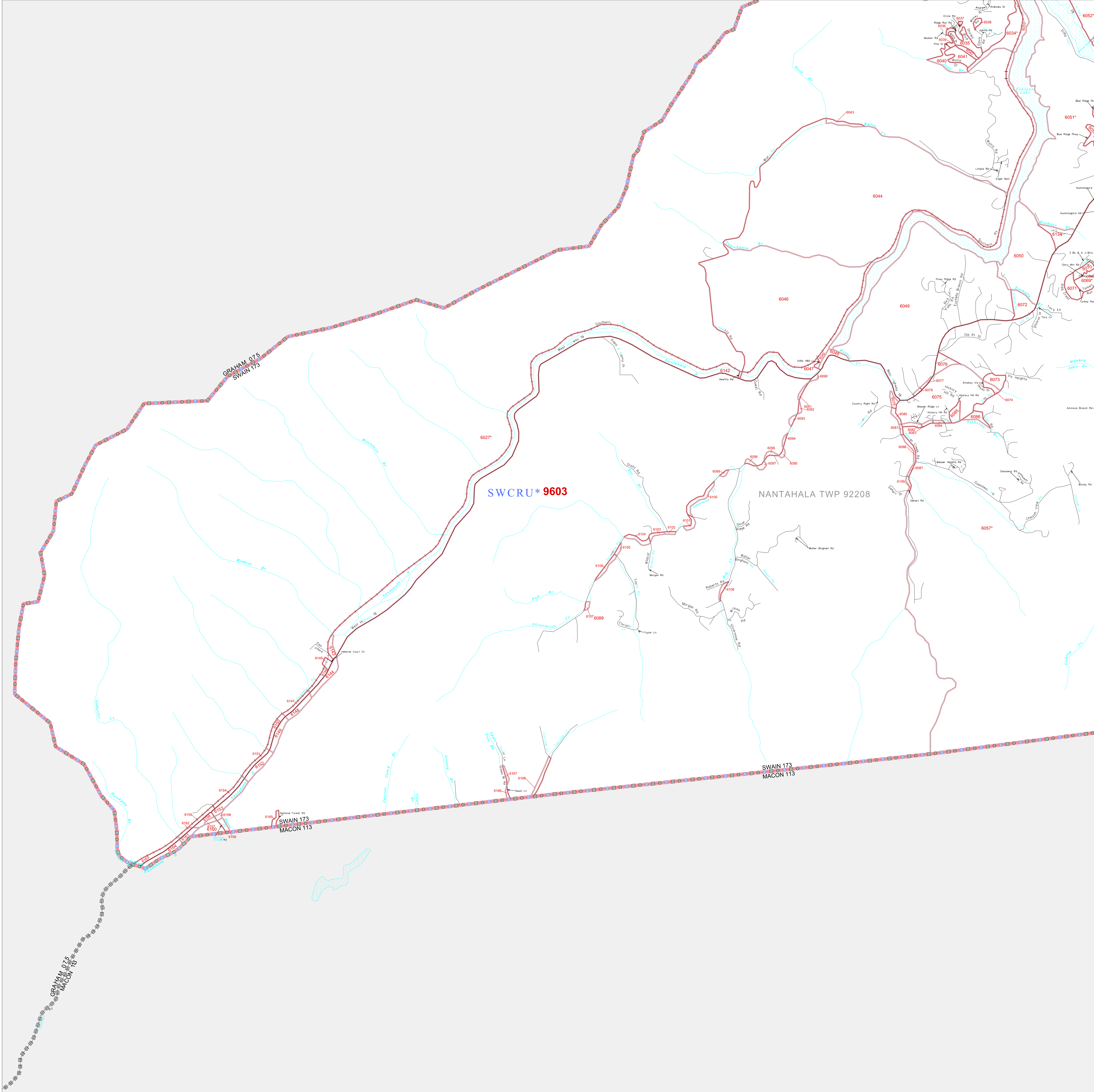


P. L. 94-171 COUNTY BLOCK MAP (CENSUS 2000)

35 371354N  
83 896875W

35 371354N  
83 896875W



**GEOGRAPHIC AREAS LEGEND**

SYMBOL	NAME STYLE
☆☆☆☆☆	INTERNATIONAL
★ ★ ★ ★ ★	AIR (FEDERAL)
◇ ◇ ◇ ◇ ◇	SDA/SA
○ ○ ○ ○ ○	TRIBAL SUBDIVISION
	STATE
▣ ▣ ▣ ▣ ▣	COUNTY
⊠ ⊠ ⊠ ⊠ ⊠	MINOR CIVIL DIV.¹
■ ■ ■ ■ ■	Incorporated Place¹
▨ ▨ ▨ ▨ ▨	Census Designated Place¹
⋯⋯⋯	Corporate Offset Boundary
● ● ● ● ●	Voting District²
— — — — —	Census Tract
— — — — —	BLOCK³
⚡	Military
Inset	Out Area

Abbreviation Reference: AIR = American Indian Reservation; SDA/SA = State Designated American Indian Statistical Area; Tribal Subdivision = American Indian Tribal Subdivision

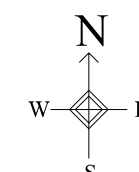
1 A \* \* following a place name indicates that the place is consecutive with a MCD. A \* \* indicates that the place is also a false MCD. In both cases, the MCD name is shown only when it differs from the place name.

2 A \* \* following a VTD code indicates an actual voting district. Its absence indicates that the VTD is a pseudo voting district or no information is available as to its status.

3 A \* \* following a block number indicates that the block number is repeated elsewhere in the block.

35 255168N  
83 896875W

35 255168N  
83 896875W



Key to Adjacent Sheets

11	12	13
	15	16

ST: North Carolina (37)  
 COU: Swain (173)  
 SHEET 15 OF 17 PARENT SHEETS

All legal boundaries and names are as of January 1, 2000. The boundaries shown on this map are for Census Bureau statistical data collection and tabulation purposes only; their depiction and designation for statistical purposes does not constitute a determination of jurisdictional authority or rights of ownership or entitlement. U.S. DEPARTMENT OF COMMERCE Economics and Statistics Administration U.S. Census Bureau

