

GEOGRAPHIC AREAS LEGEND

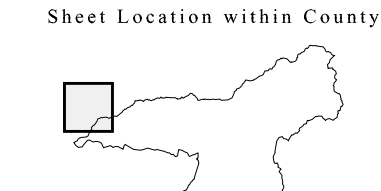
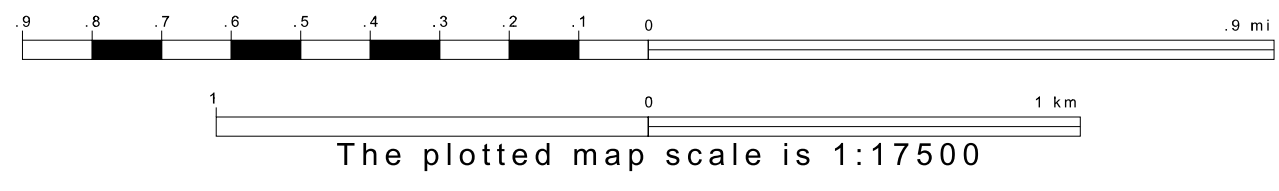
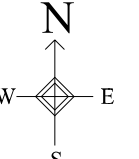
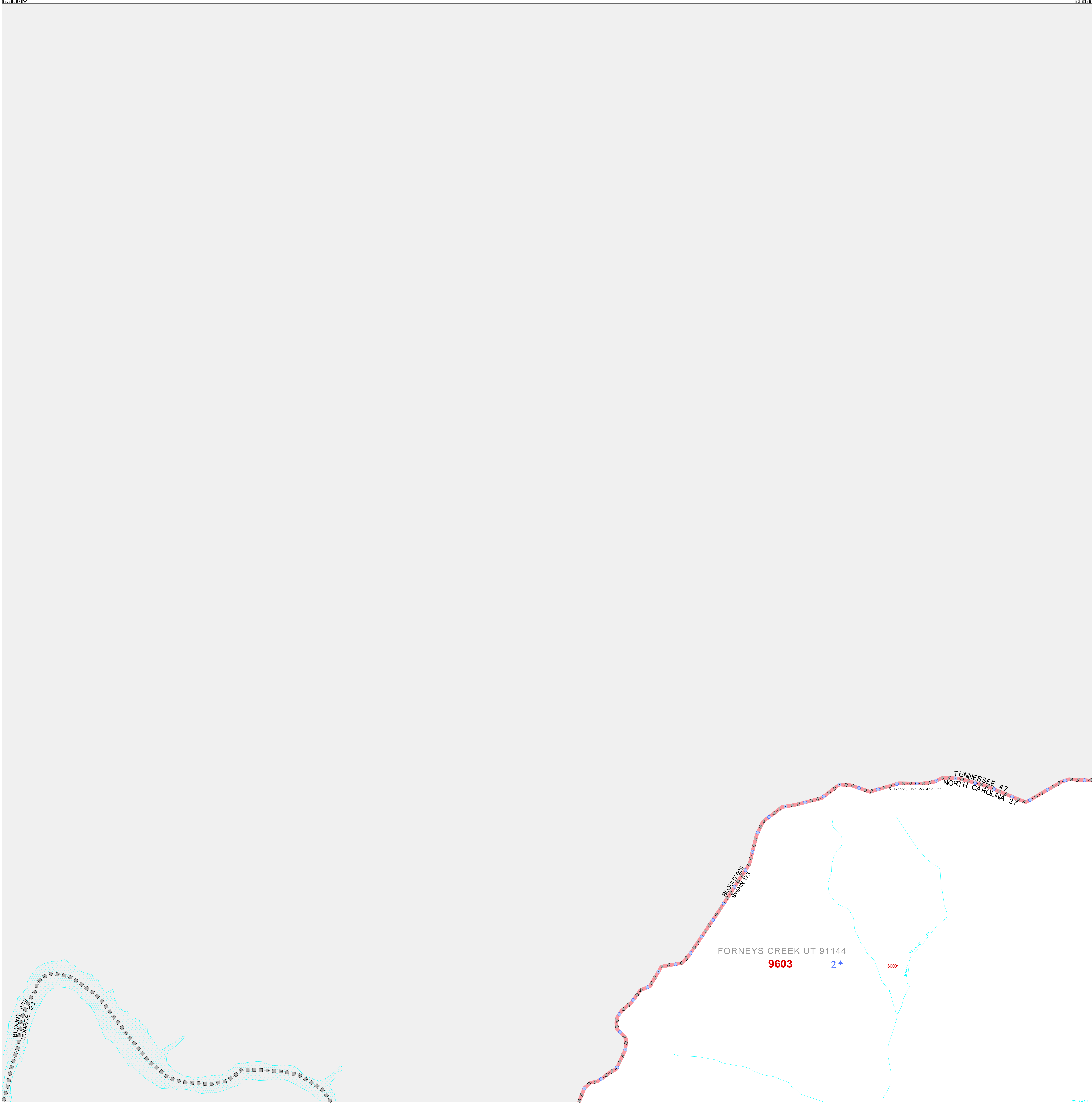
SYMBOL	NAME STYLE
☆☆☆☆☆	INTERNATIONAL
★☆☆☆☆	AIR (FEDERAL)
◇◇◇◇◇	SDA/SA
○	TRIBAL SUBDIVISION
///////	STATE
■■■■■	COUNTY
□	MINOR CIVIL DIV. ¹
■	Incorporated Place ¹
■	Census Designated Place ¹
---	Corporate Offset Boundary
●●●●●	Voting District ²
—	Census Tract
—	BLOCK ³

Abbreviation Reference: AIR = American Indian Reservation; SDA/SA = State Designated American Indian Statistical Area; Tribal Subdivision = American Indian Tribal Subdivision

1 A * * following a place name indicates that the place is coterminous with a MCD. A * indicates that the place is also a false MCD. In both cases, the MCD name is shown only when it differs from the place name.

2 A * * following a VTD code indicates an actual voting district. Its absence indicates that the VTD is a pseudo voting district or no information is available as to its status.

3 A * * following a block number indicates that the block number is repeated elsewhere in the block.



4	5
10	11

ST: North Carolina (37)
COU: Swain (173)
SHEET 4 OF 17 PARENT SHEETS

All legal boundaries and names are as of January 1, 2000. The boundaries shown on this map are for Census Bureau statistical data collection and tabulation purposes only; their depiction and designation for statistical purposes does not constitute a determination of jurisdictional authority or rights of ownership or entitlement. U.S. DEPARTMENT OF COMMERCE Economics and Statistics Administration U.S. Census Bureau

