

P. L. 94-171 COUNTY BLOCK MAP (CENSUS 2000)

34 936329N
79 849734W

34 936329N
79 499209W

GEOGRAPHIC AREAS LEGEND

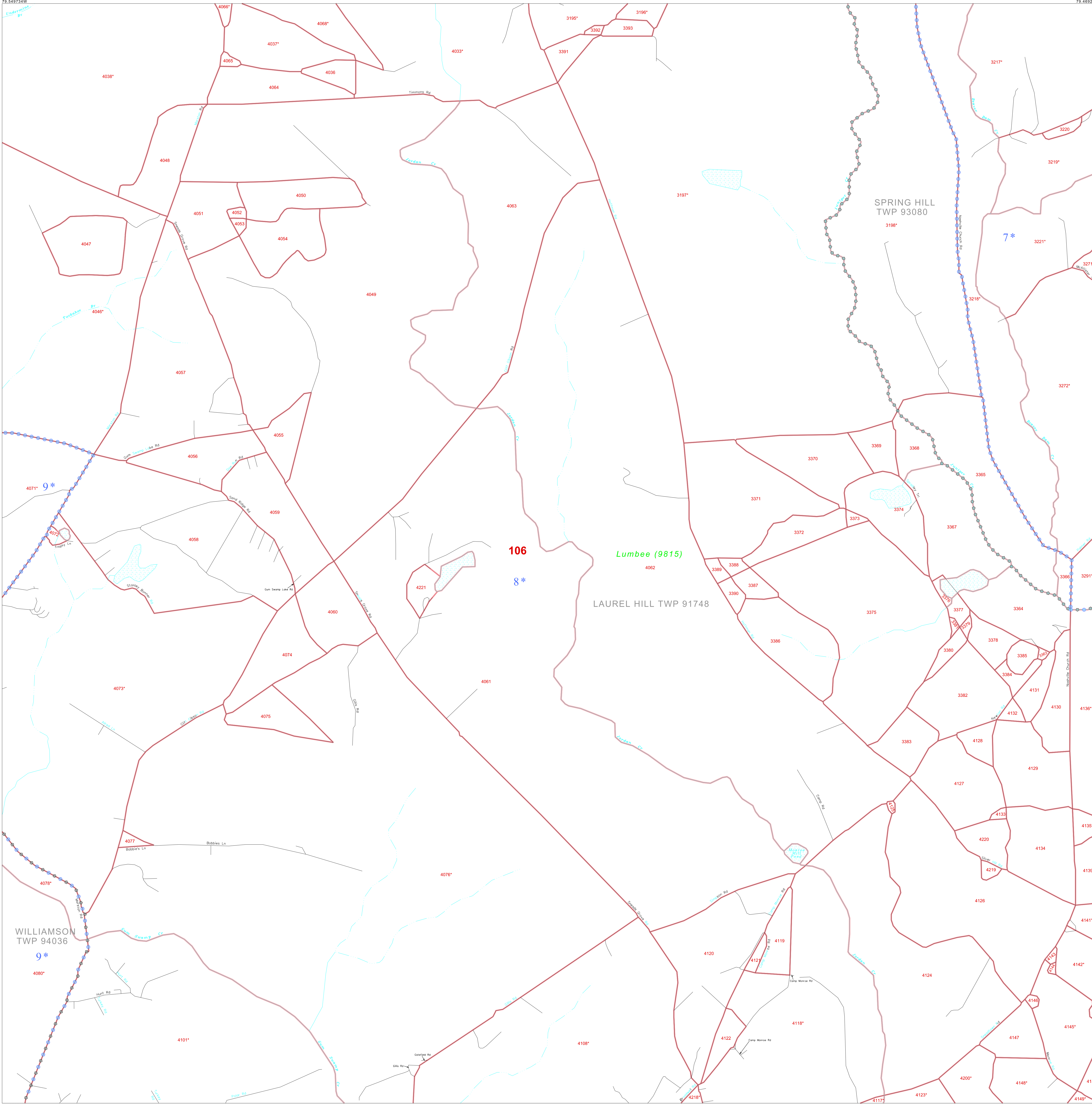
SYMBOL	NAME STYLE
☆☆☆☆☆	INTERNATIONAL
★☆☆☆☆	AIR (FEDERAL)
◆◆◆◆◆	SDA/SA
◇◇◇◇◇	TRIBAL SUBDIVISION
///////	STATE
■■■■■	COUNTY
▣▣▣▣▣	MINOR CIVIL DIV. ¹
■■■■■	Incorporated Place ²
■■■■■	Census Designated Place ²
-----	Corporate Offset Boundary
●●●●●	Voting District ³
====	Census Tract
-----	BLOCK ³
■	Military
□	Inset
□	Out Area

Abbreviation Reference: AIR = American Indian Reservation; SDA/SA = State Designated American Indian Statistical Area; Tribal Subdivision = American Indian Tribal Subdivision

1 A * * following a place name indicates that the place is consecutive with a MCD. A * * indicates that the place is also a false MCD. In both cases, the MCD name is shown only when it differs from the place name.

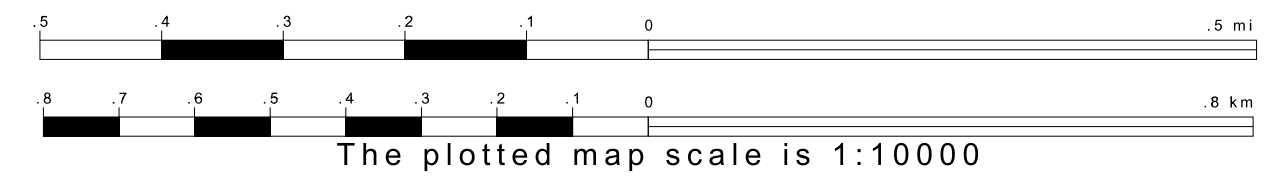
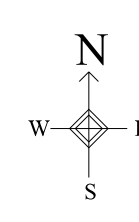
2 A * * following a VTD code indicates an actual voting district. Its absence indicates that the VTD is a pseudo voting district or no information is available as to its status.

3 A * * following a block number indicates that the block number is repeated elsewhere in the block.

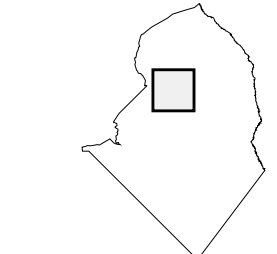


34 869930N
79 849734W

34 869930N
79 499209W



Sheet Location within County



Key to Adjacent Sheets

4	5	6
8	9	10
13	14	15

ST: North Carolina (37)
 COU: Scotland (165)
 SHEET 9 OF 27 PARENT SHEETS

All legal boundaries and names are as of January 1, 2000. The boundaries shown on this map are for Census Bureau statistical data collection and tabulation purposes only; their depiction and designation for statistical purposes does not constitute a determination of jurisdictional authority or rights of ownership or entitlement. U.S. DEPARTMENT OF COMMERCE Economics and Statistics Administration U.S. Census Bureau

