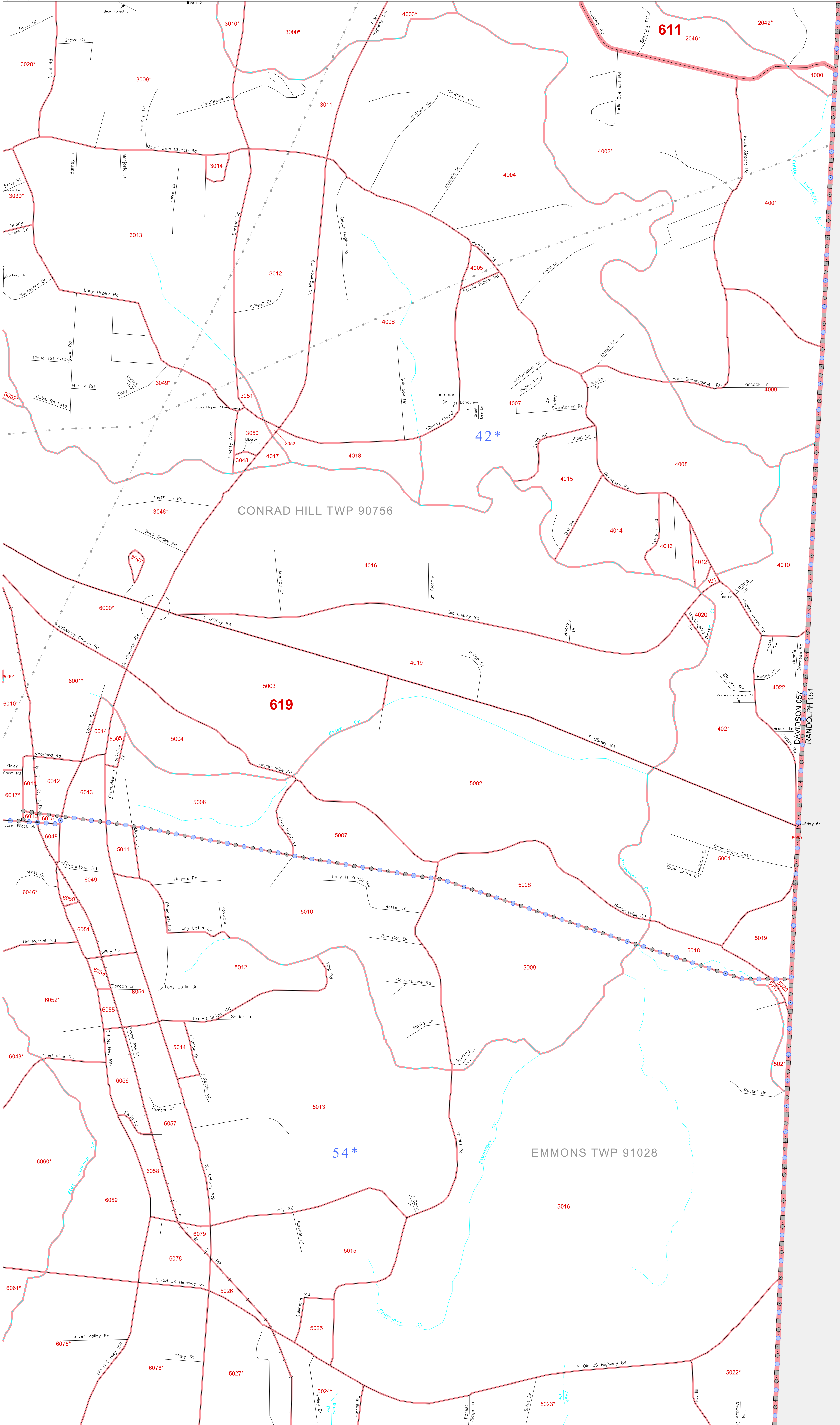


35 807024N
80 112781W

35 807024N
80 010964W



GEOGRAPHIC AREAS LEGEND

SYMBOL	NAME STYLE
*****	INTERNATIONAL
*****	AIR (FEDERAL)
*****	SDA/SA
*****	TRIBAL SUBDIVISION
//////	STATE
	COUNTY
	MINOR CIVIL DIV.¹
	Incorporated Place¹
	Census Designated Place¹
.....	Corporate Offset Boundary
.....	Voting District²
.....	Census Tract
.....	BLOCK³

Abbreviation Reference: AIR = American Indian Reservation; SDA/SA = State Designated American Indian Statistical Area; Tribal Subdivision = American Indian Tribal Subdivision

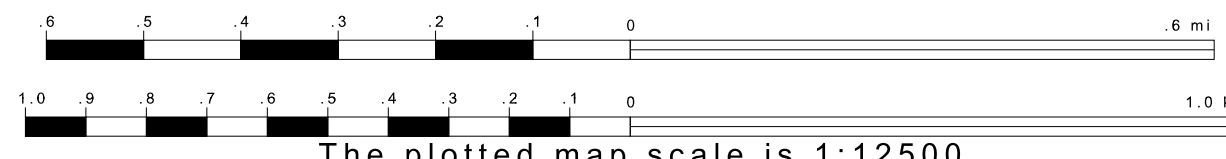
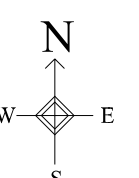
1 A * * following a place name indicates that the place is consecutive with a MCD. A * * indicates that the place is also a false MCD. In both cases, the MCD name is shown only when it differs from the place name.

2 A * * following a VTD code indicates an actual voting district. Its absence indicates that the VTD is a pseudo voting district or no information is available as to its status.

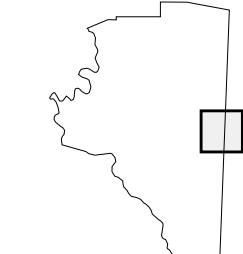
3 A * * following a block number indicates that the block number is repeated elsewhere in the block.

35 724038N
80 112781W

35 724038N
80 010964W



Sheet Location within County



Key to Adjacent Sheets

12	13
17	18
21	22

ST: North Carolina (37)
 COU: Davidson (057)
 SHEET 18 OF 27 PARENT SHEETS



All legal boundaries and names are as of January 1, 2000. The boundaries shown on this map are for Census Bureau statistical data collection and tabulation purposes only; their depiction and designation for statistical purposes does not constitute a determination of jurisdictional authority or rights of ownership or entitlement. U.S. DEPARTMENT OF COMMERCE Economics and Statistics Administration U.S. Census Bureau